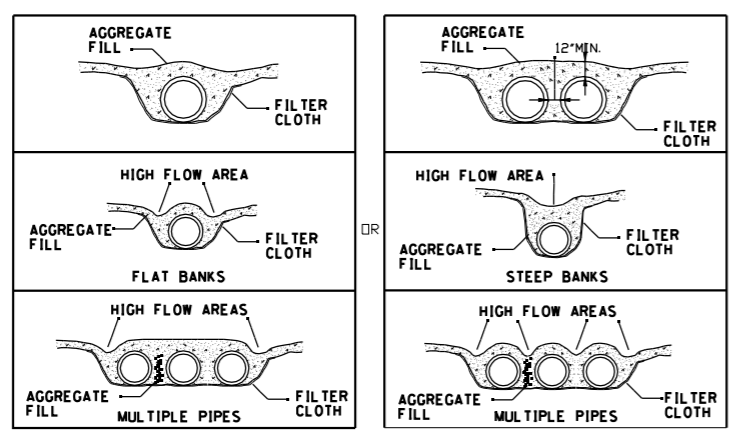
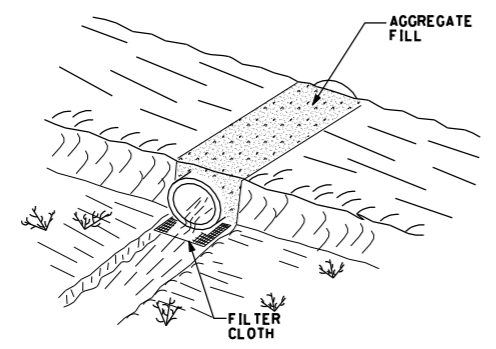


STONE OUTLET SEDIMENT TRAP
(NOT TO SCALE)



TEMPORARY ACCESS CULVERT
(NOT TO SCALE)

OPTION: A ONE FOOT LAYER OF N.Y.S. DOT #2 STONE MAY BE PLACED ON THE UPSTREAM SIDE OF THE RIPRAP IN PLACE OF THE EMBEDDED FILTER CLOTH.

NOTES:

1. AREA UNDER EMBANKMENT SHALL BE CLEARED, GRUBBED AND STRIPPED OF ANY VEGETATION AND ROOT MAT. THE POOL AREA SHALL BE CLEARED.
2. THE FILL MATERIAL FOR THE EMBANKMENT SHALL BE FREE OF ROOTS AND OTHER WOODY VEGETATION AS WELL AS OVER-SIZED STONES, ROCKS, ORGANIC MATERIAL OR OTHER OBJECTIONABLE MATERIAL. THE EMBANKMENT SHALL BE COMPACTED BY TRAVERSING WITH EQUIPMENT WHILE IT IS BEING CONSTRUCTED.
3. SEDIMENT SHALL BE REMOVED AND TRAP RESTORED TO ITS ORIGINAL DIMENSIONS WHEN THE SEDIMENT HAS ACCUMULATED TO 1/2 THE DESIGN DEPTH OF THE TRAP.
4. THE STRUCTURE SHALL BE INSPECTED AFTER EACH RAIN AND REPAIRS MADE AS NEEDED.
5. THE STRUCTURE SHALL BE REMOVED AND THE AREA STABILIZED WHEN THE DRAINAGE AREA HAS BEEN PROPERLY STABILIZED.
6. THE MAXIMUM DRAINAGE AREA FOR THE SEDIMENT TRAP IS 5 ACRES.

NO.	Description	REVISION	DATE	BY
1				

Contact: Jenny L. Burke
Business Developer
Phone: (315) 376-4316

IBERDROLA RENEWABLES

7557 S State St., Suite 201 - Lowville, NY 13367

UNAPPROVED ALTERATION OF ANY KIND
APPLICABLE STATE AND LOCAL LAWS

**PROGRESS PRINT
NOT FOR
CONSTRUCTION**

Design Copyright © 2008 Creighton Manning Engineering, LLP

CMEC

CREIGHTON MANNING ENGINEERING, LLP
17 COMPUTER DRIVE WEST - ALBANY, NEW YORK - 12205
P: (618) 446-0888 F: (618) 446-0887 WWW.CMEC.COM

DESIGNED: D.A.T. DRAWN BY: K.H.D. CHECKED: R.W.O.

ROARING BROOK WIND POWER PROJECT
TOWN OF MARTINSBURG
LEWIS COUNTY, NEW YORK

**SOIL EROSION AND SEDIMENT
CONTROL DETAILS**

DATE: OCTOBER 2008 CME No.: 07-089D SCALE: AS NOTED

FILE = F:\Projects\2007_07_053d\Cadd\vdgn\eccd-5.dgn
DATE = 10/23/2008
USER = Kobernick