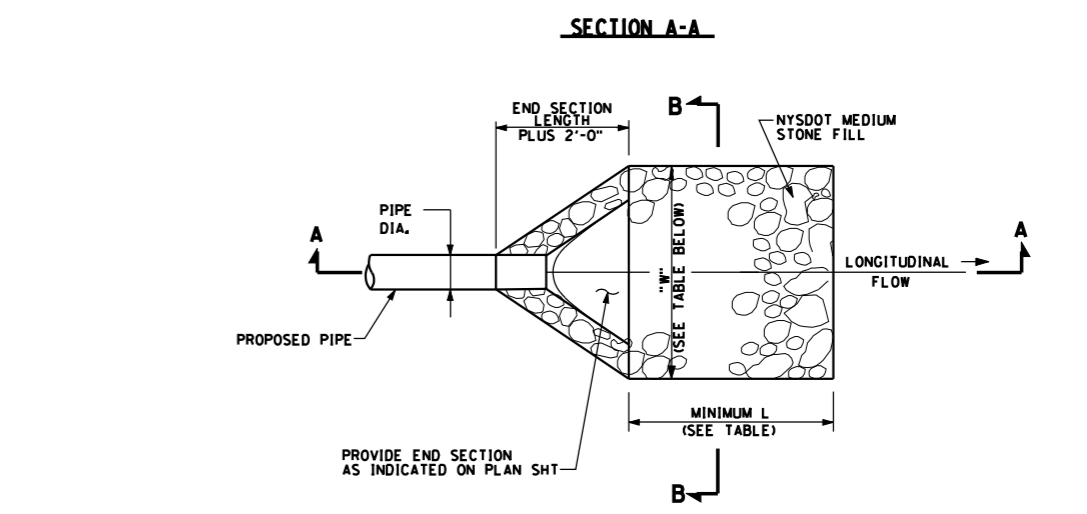
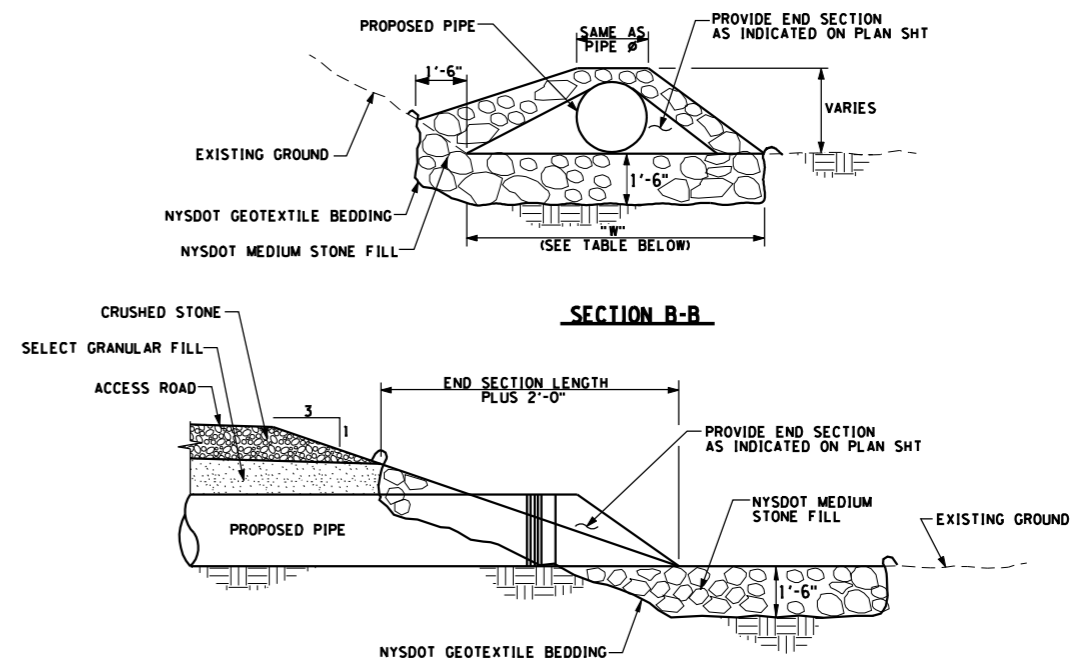


SECTION C-C
STREAM CULVERT DETAIL
NOT TO SCALE

- NOTES:**
1. PROVIDE 1'-0" OF SELECT GRANULAR FILL BEDDING BELOW PIPE IF FOOTING SOIL IS DEEMED UNSUITABLE.
 2. PROVIDE FLARED END SECTIONS AT SINGLE PIPE LOCATIONS.
 3. PIPES SIZES FOR THE CULVERTS ARE PROVIDED ON THE PLAN SHEET.
 4. THE THICKNESS OF CRUSHED STONE TO BE ADDED TO THE EXISTING ROADS IS ASSUMED TO BE 12" FOR DESIGN PURPOSES.



STONE LINED APRON DETAIL
NOT TO SCALE

PIPE DIA.	WIDTH "W"	MIN. LENGTH "L"
12"	4'	8'
15"-18"	5'	8'
24"	6'	8'
30"	7'	11'
36"	9'	13'
42"	10'	15'
48"	12'	20'

NOTE:
BASED ON NRCS CHARTS FOR A TAILWATER CONDITION OF ONE HALF OF A PIPE DIAMETER OR GREATER.

NO.	Description	REVISION	DATE	BY
1				

Contact: Jenny L. Burke
Business Developer
Phone: (315) 376-4316

IBERDROLA RENEWABLES
7557 S State St., Suite 201 - Lowville, NY 13367

UNAPPROVED ALTERATION OF ANY KIND
APPLICABLE STATE AND LOCAL LAWS

**PROGRESS PRINT
NOT FOR CONSTRUCTION**

Design Copyright © 2008 Creighton Manning Engineering, LLP

CMEC
CREIGHTON MANNING ENGINEERING, LLP
17 COMPUTER DRIVE WEST - ALBANY - NEW YORK - 12205
P: (518) 446-0888 F: (518) 446-0887 WWW.CMEC.COM

DESIGNED: D.A.T. | DRAWN BY: K.H.D. | CHECKED: R.W.O.

ROARING BROOK WIND POWER PROJECT
TOWN OF MARTINSBURG
LEWIS COUNTY, NEW YORK

DRAINAGE DETAILS

DATE: OCTOBER 2008 | CME No.: 07-089D | SCALE: AS NOTED

FILE = F:\Projects\2007\07-0893d\Cadd\vdgn\dd-1.dgn
DATE = 10/23/2008
USER = Robert Nick