



**Executive Summary – Wind Power GeoPlanner™**

**Licensed Microwave Search & Worst Case Fresnel Zone**

Comsearch performed an analysis to evaluate the potential effect of the planned Roaring Brook Project in Lewis County, New York on existing non-Federal Government microwave telecom systems.

**Microwave Search Results:** Comsearch’s Wind Power GeoPlanner™ provides a graphical representation of affected microwave paths and provides supporting technical parameters. The microwave path data is overlaid on topographic basemaps. Comsearch identified 1 microwave path that intersects the project area (see Figure 1 and Table 1 below).

Comsearch then calculated a Worst Case Fresnel Zone (WCFZ) for each microwave path in the project area. The mid-point of a full microwave path is the location where the widest (or worst case) Fresnel zone occurs. Fresnel zones are calculated for each path using the following formula.

$$R_n \cong 17.3 \sqrt{\frac{n}{FGHz} \left( \frac{d_1 d_2}{d_1 + d_2} \right)}$$

Where,

R<sub>n</sub> = First Fresnel Zone Radius, meters

n = The Number 1

FGHz = Frequency of Microwave Link, GHz

d<sub>1</sub> = Distance to Wind Turbine from Microwave Station 1, km

d<sub>2</sub> = Distance to Wind Turbine from Microwave Station 2, km

*note: For WCFZ calculation d<sub>1</sub> = d<sub>2</sub>*

The calculated WCFZ radius, giving the linear path an area or swath, buffers each microwave path in the project area. The distance unit is in meters and can be found in the column attribute “WCFZ.” In general, this is the XY area where the planned wind turbines should be avoided, if possible. These areas are shown in Figure 2.

The area was shown to have no potential XY conflicts between microwave paths and proposed turbines.

**Turbines:** 39 turbines were considered in the analysis, each with a blade diameter of 90 meters. The coordinates provided were in NAD 83.



**Map Projection:** The ESRI® Shapefiles contained in the enclosed GeoPlanner CD are in NAD 83 UTM Zone 18 projected coordinate system.

**Comsearch Contact:**

Denise Finney, Account Manager  
Phone: (703) 726-5650 Fax: (703) 726-5595  
Email: [dfinney@comsearch.com](mailto:dfinney@comsearch.com)

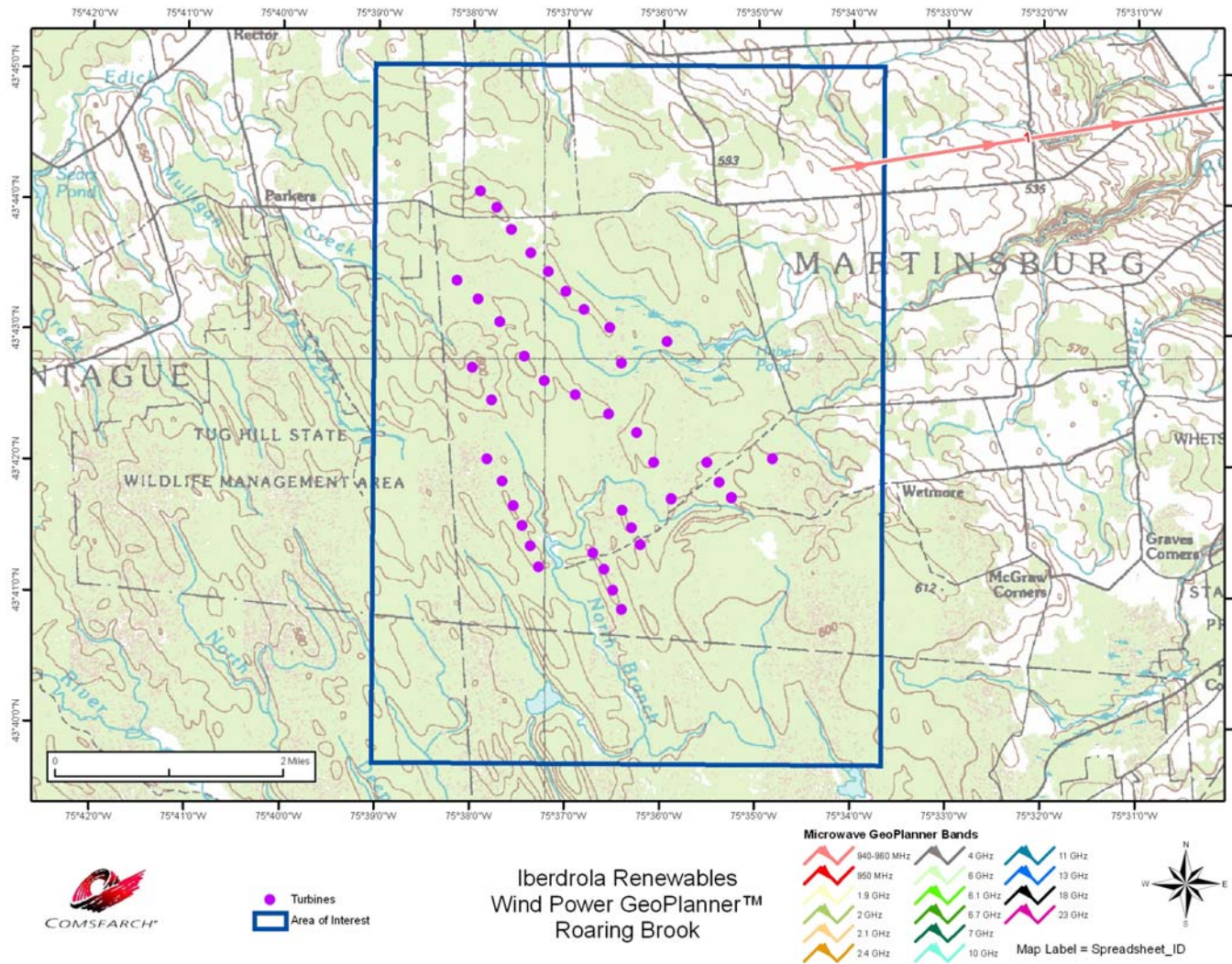
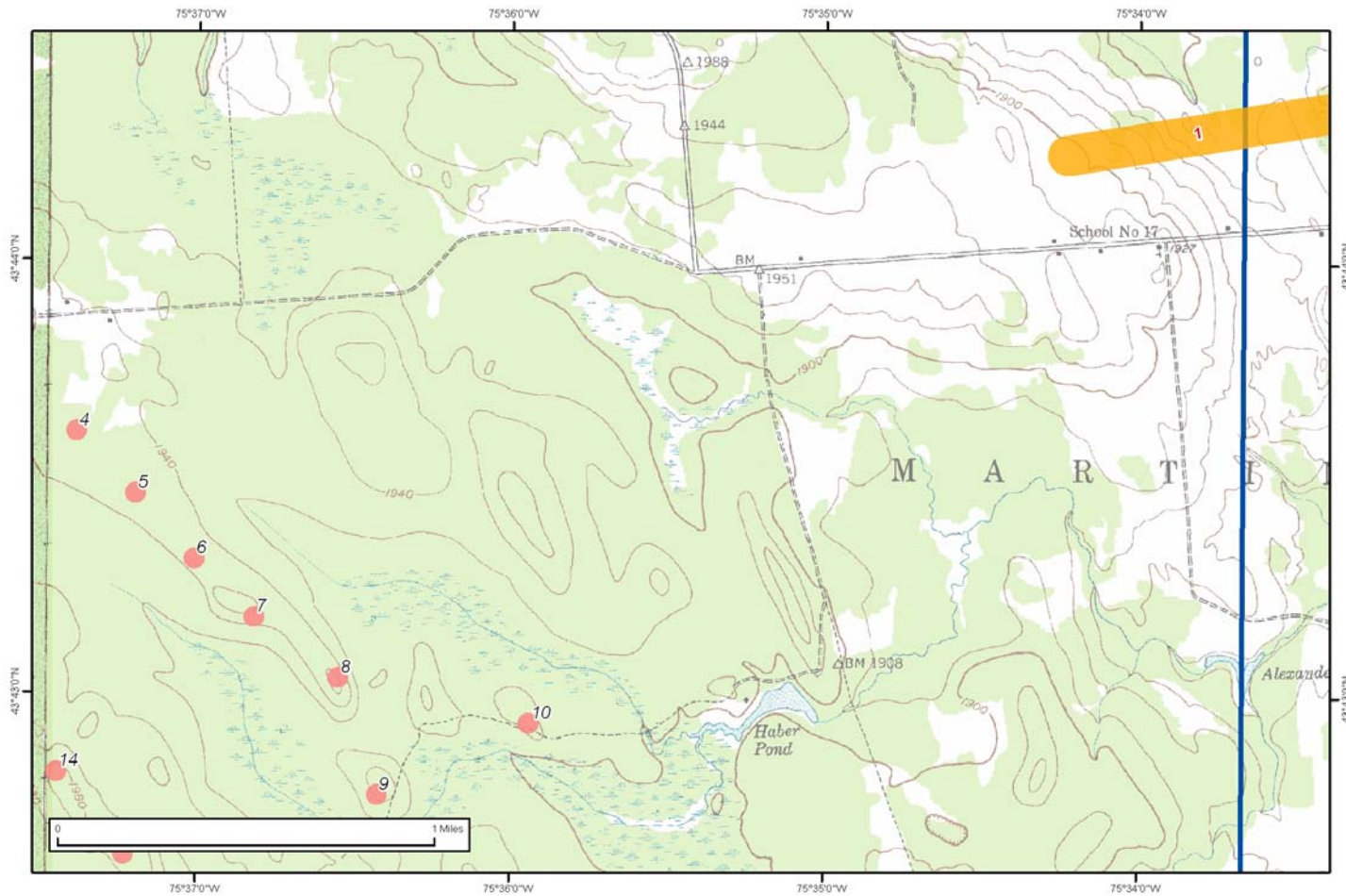


Figure 1 – Wind Power GeoPlanner™



Iberdrola Renewables  
Wind Power GeoPlanner™  
Roaring Brook

- Blades: 90m Diameter of Turbines
- WCFZ
- Area of Interest



Map Label = Spreadsheet\_ID

**Figure 2 – Wind Power GeoPlanner™ & WCFZ**



ID	Site 1	Site 2	Call Sign 1	Call Sign 2	Frequency Band	Licensee	WCFZ (m)
1	W MARTINS B	BLUE MTN	WNTZ245	WNTZ246	940-960 MHz	NEW YORK STATE EMERGENCY MANAGEMENT OFC	86.66

**Table 1 – Microwave GeoPlanner Links Considered in Analysis**  
*(See enclosed mw\_geopl.xls for more detailed information and GP\_dict\_matrix\_description.xls for field description)*