



Executive Summary – Wind Power GeoPlanner™

Licensed Microwave Search

Comsearch performed an analysis to evaluate the potential effect of the planned Roaring Brook wind project area in Lewis County, New York on existing non-Federal Government microwave telecom systems.

Comsearch's Wind Power GeoPlanner™ provides a graphical representation of affected microwave paths and provides supporting technical parameters. The microwave path data is overlaid on USGS topographic basemaps.

Microwave Search Results. Comsearch identified no microwave paths that intersect the project area (see Figure 1).

Map Projection: The ESRI® Shapefiles contained in the enclosed GeoPlanner CD are in NAD 83 UTM Zone 18 projected coordinate system.

Comsearch Contact:

Denise Finney, Account Manager
Phone: (703) 726-5650 Fax: (703) 726-5599
Email: dfinney@comsearch.com

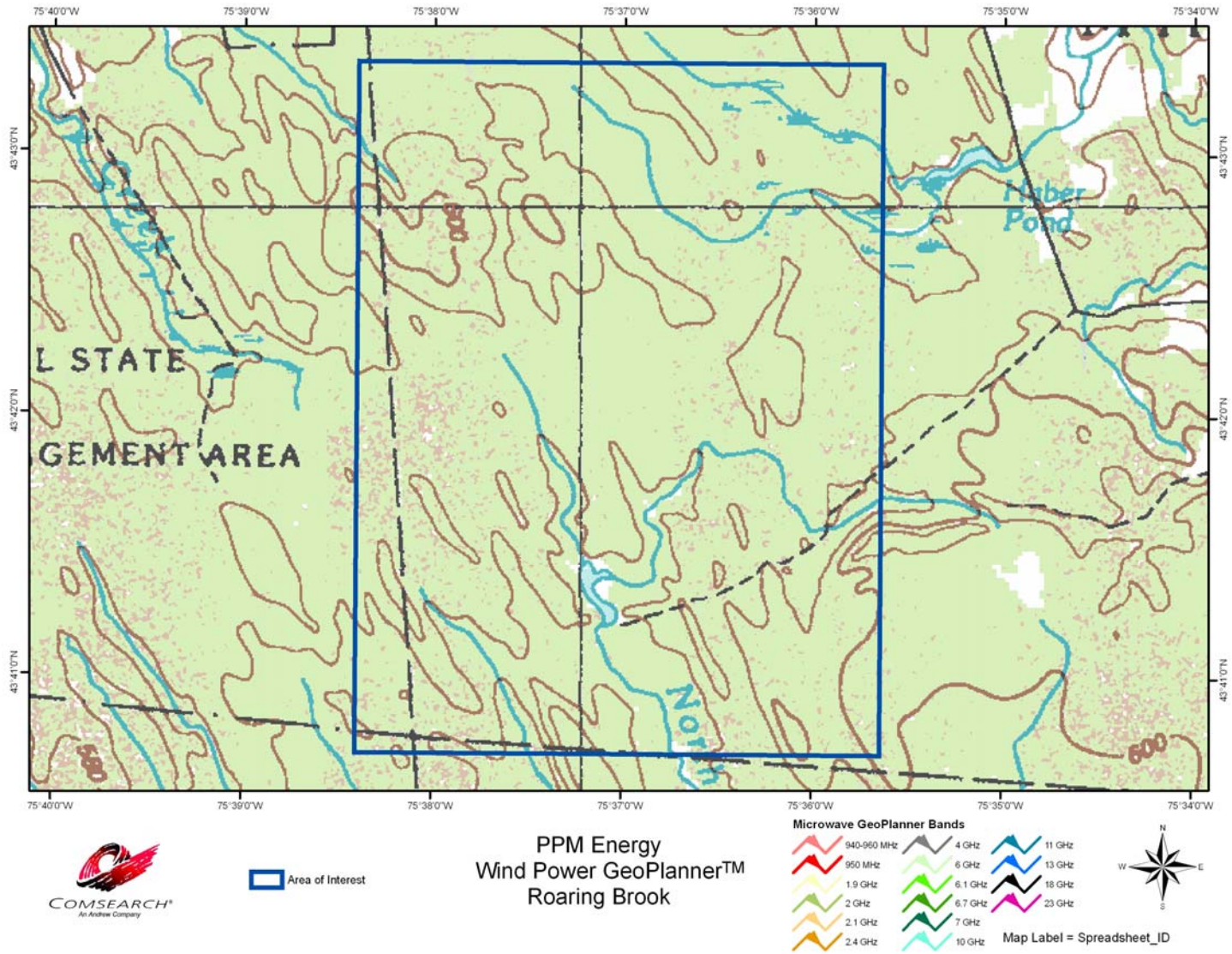


Figure 1 – Wind Power GeoPlanner™