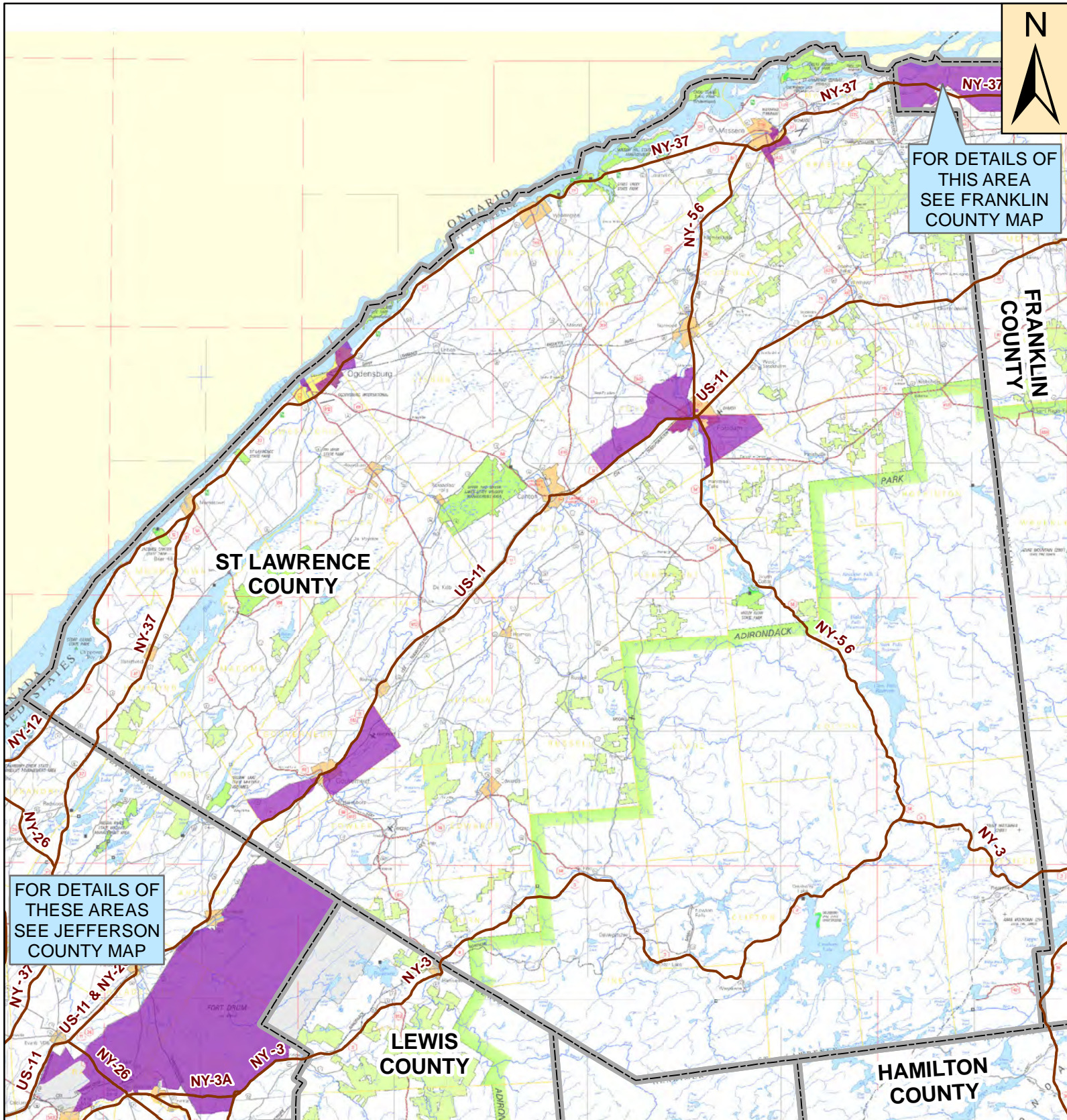


Appendix M

Potential Environmental Justice Areas

Potential Environmental Justice Areas in St. Lawrence County, New York

Click on any Potential EJ Area outlined in blue for a detailed map



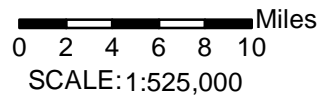
This computer representation has been compiled from supplied data or information that has not been verified by NYSDEC. The data is offered here as a general representation only and is not to be used for commercial purposes without verification by an independent professional qualified to verify such data or information.

NYSDEC does not guarantee the accuracy, completeness, or timeliness of the information shown and shall not be liable for any loss or injury resulting from reliance.

Data Source for Potential Environmental Justice Areas:
U.S. Census Bureau, 2000 U.S. Census

Legend

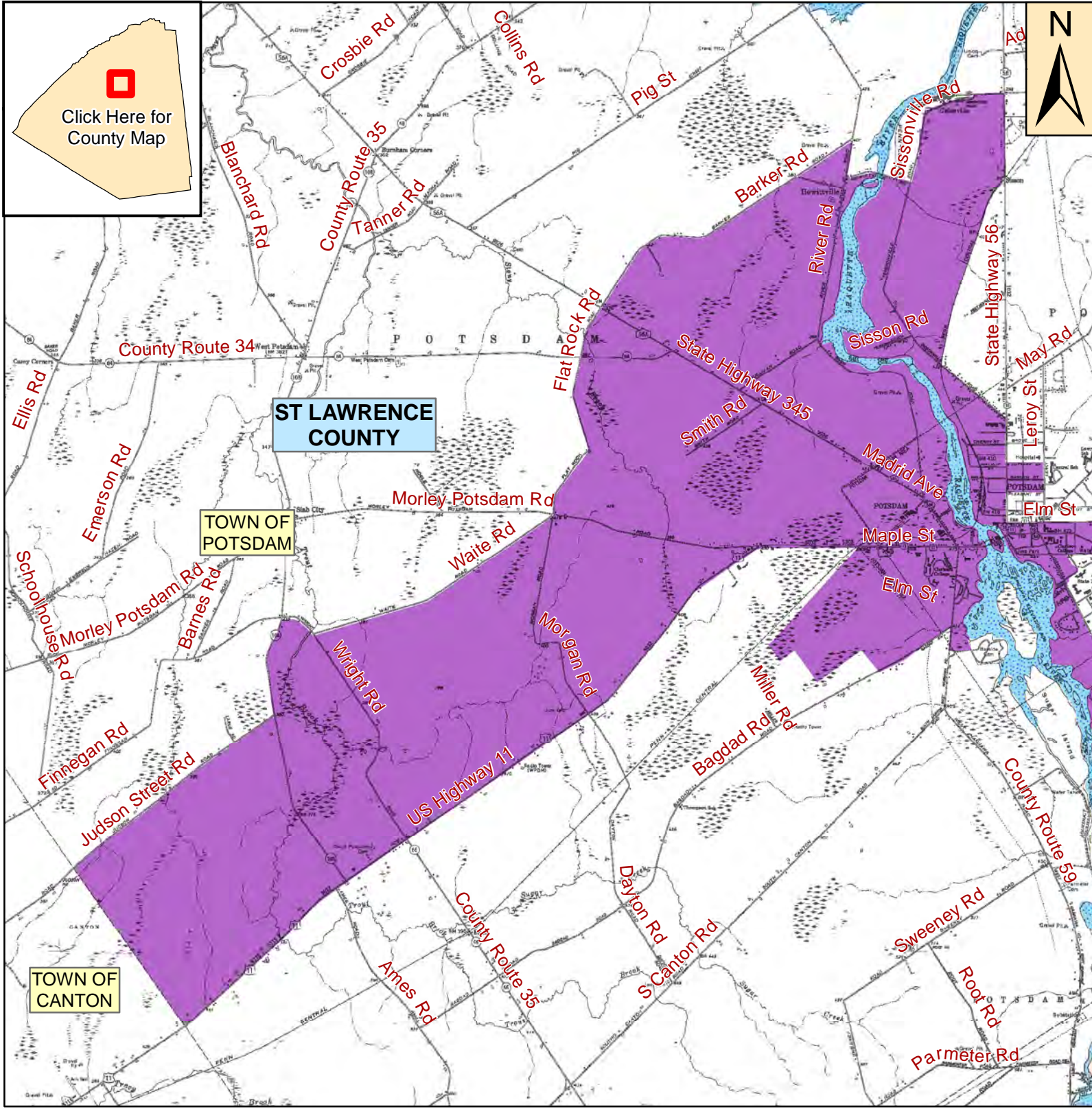
- Potential EJ Area
- County Boundary



For questions about this map contact:
New York State Department of
Environmental Conservation
Office of Environmental Justice
625 Broadway, 14th Floor
Albany, New York 12233-1500
(518) 402-8556
ej@gw.dec.state.ny.us



Potential Environmental Justice Areas in the Town of Potsdam (West detail), St. Lawrence County, New York



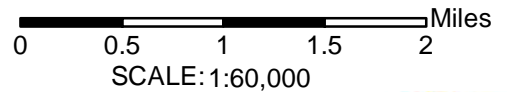
This computer representation has been compiled from supplied data or information that has not been verified by NYSDEC. The data is offered here as a general representation only and is not to be used for commercial purposes without verification by an independent professional qualified to verify such data or information.

NYSDEC does not guarantee the accuracy, completeness, or timeliness of the information shown and shall not be liable for any loss or injury resulting from reliance.

Data Source for Potential Environmental Justice Areas: U.S. Census Bureau, 2000 U.S. Census

Legend

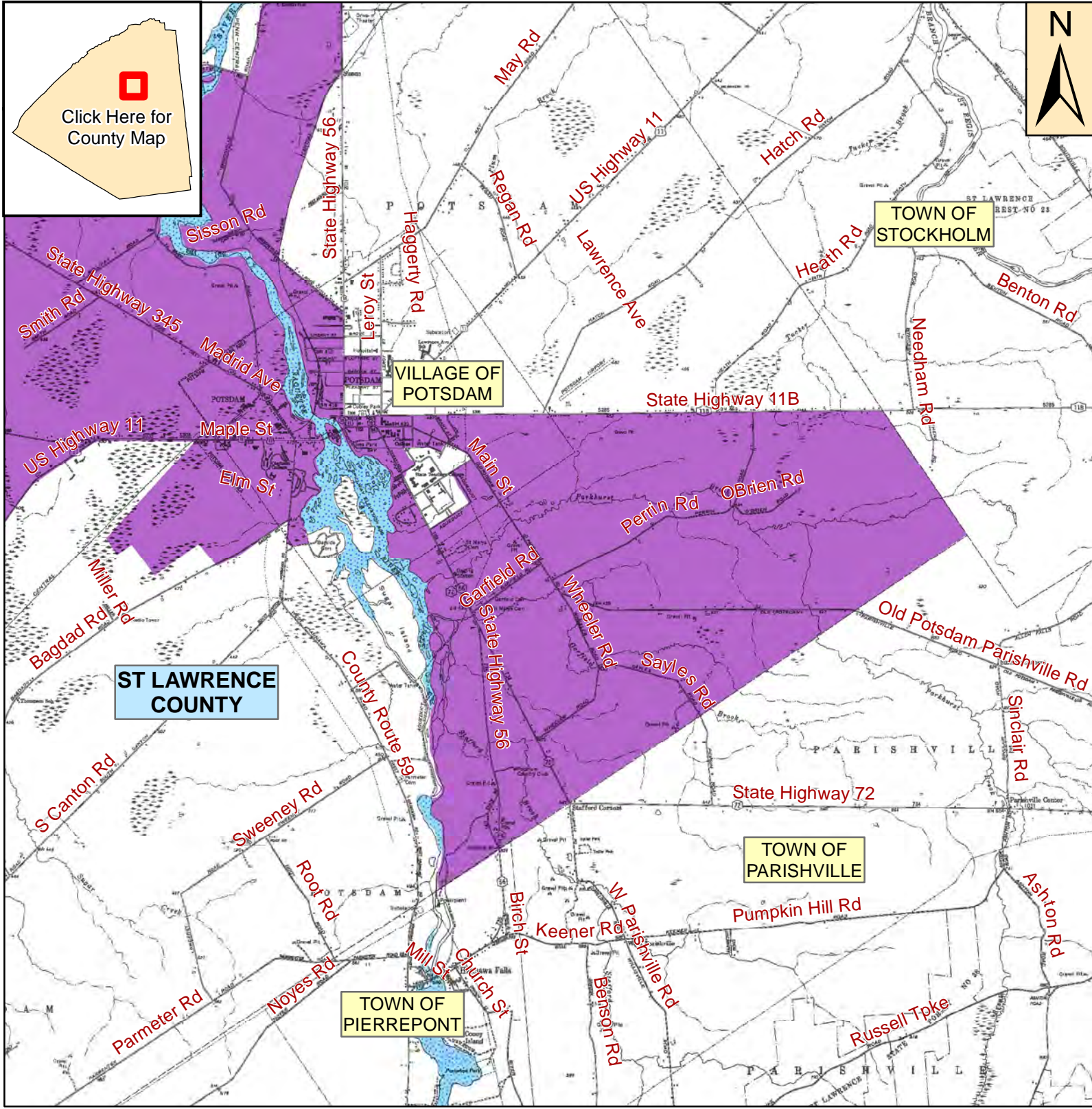
- Potential EJ Area
- County Boundary
- Waterbodies



For questions about this map contact:
 New York State Department of
 Environmental Conservation
 Office of Environmental Justice
 625 Broadway, 14th Floor
 Albany, New York 12233-1500
 (518) 402-8556
 ej@gw.dec.state.ny.us



Potential Environmental Justice Areas in the Town of Potsdam (East detail), St. Lawrence County, New York

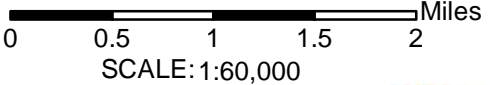


This computer representation has been compiled from supplied data or information that has not been verified by NYSDEC. The data is offered here as a general representation only and is not to be used for commercial purposes without verification by an independent professional qualified to verify such data or information.

NYSDEC does not guarantee the accuracy, completeness, or timeliness of the information shown and shall not be liable for any loss or injury resulting from reliance.

Data Source for Potential Environmental Justice Areas: U.S. Census Bureau, 2000 U.S. Census

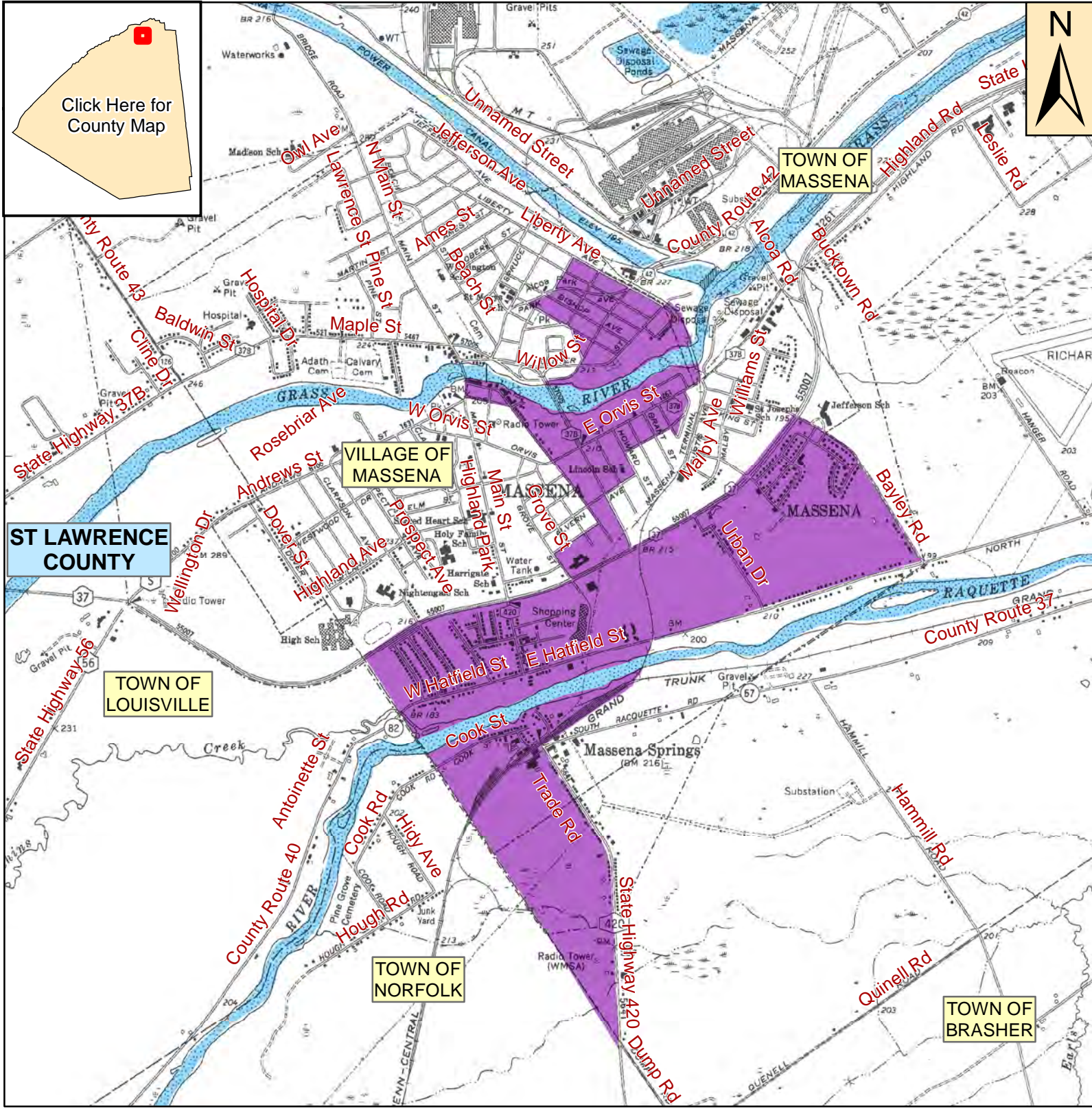
- Legend**
- Potential EJ Area
 - County Boundary
 - Waterbodies



For questions about this map contact:
 New York State Department of Environmental Conservation
 Office of Environmental Justice
 625 Broadway, 14th Floor
 Albany, New York 12233-1500
 (518) 402-8556
 ej@gw.dec.state.ny.us



Potential Environmental Justice Areas in the Village of Massena St. Lawrence County, New York



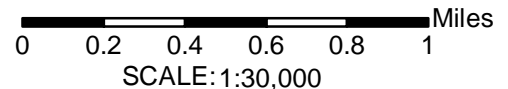
This computer representation has been compiled from supplied data or information that has not been verified by NYSDEC. The data is offered here as a general representation only and is not to be used for commercial purposes without verification by an independent professional qualified to verify such data or information.

NYSDEC does not guarantee the accuracy, completeness, or timeliness of the information shown and shall not be liable for any loss or injury resulting from reliance.

Data Source for Potential Environmental Justice Areas:
U.S. Census Bureau, 2000 U.S. Census

Legend

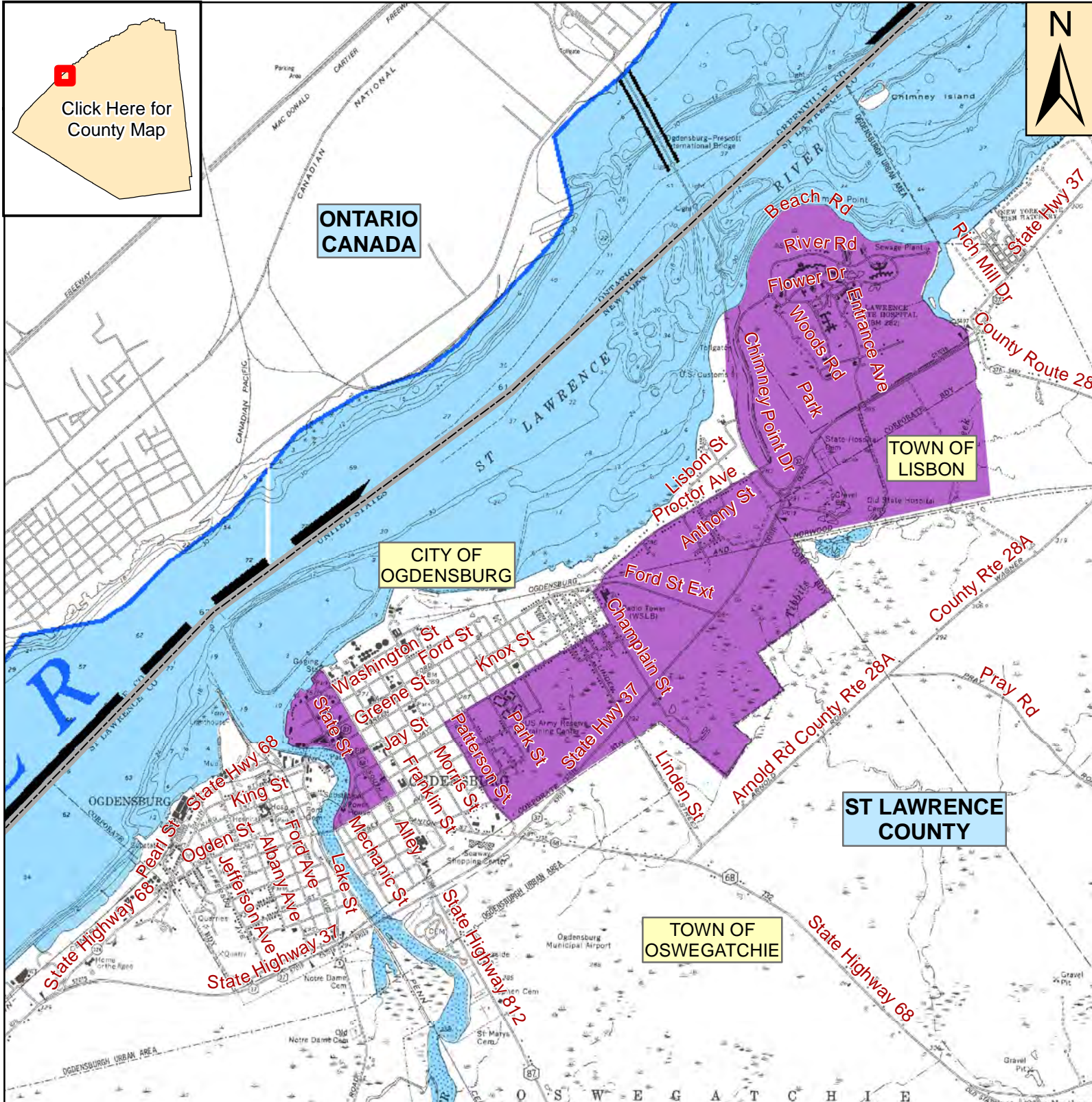
- Potential EJ Area
- County Boundary
- Waterbodies



For questions about this map contact:
New York State Department of
Environmental Conservation
Office of Environmental Justice
625 Broadway, 14th Floor
Albany, New York 12233-1500
(518) 402-8556
ej@gw.dec.state.ny.us



Potential Environmental Justice Areas in the City of Ogdensburg and Town of Lisbon, St. Lawrence County, New York



Click Here for County Map

This computer representation has been compiled from supplied data or information that has not been verified by NYSDEC. The data is offered here as a general representation only and is not to be used for commercial purposes without verification by an independent professional qualified to verify such data or information.

NYSDEC does not guarantee the accuracy, completeness, or timeliness of the information shown and shall not be liable for any loss or injury resulting from reliance.

Data Source for Potential Environmental Justice Areas: U.S. Census Bureau, 2000 U.S. Census

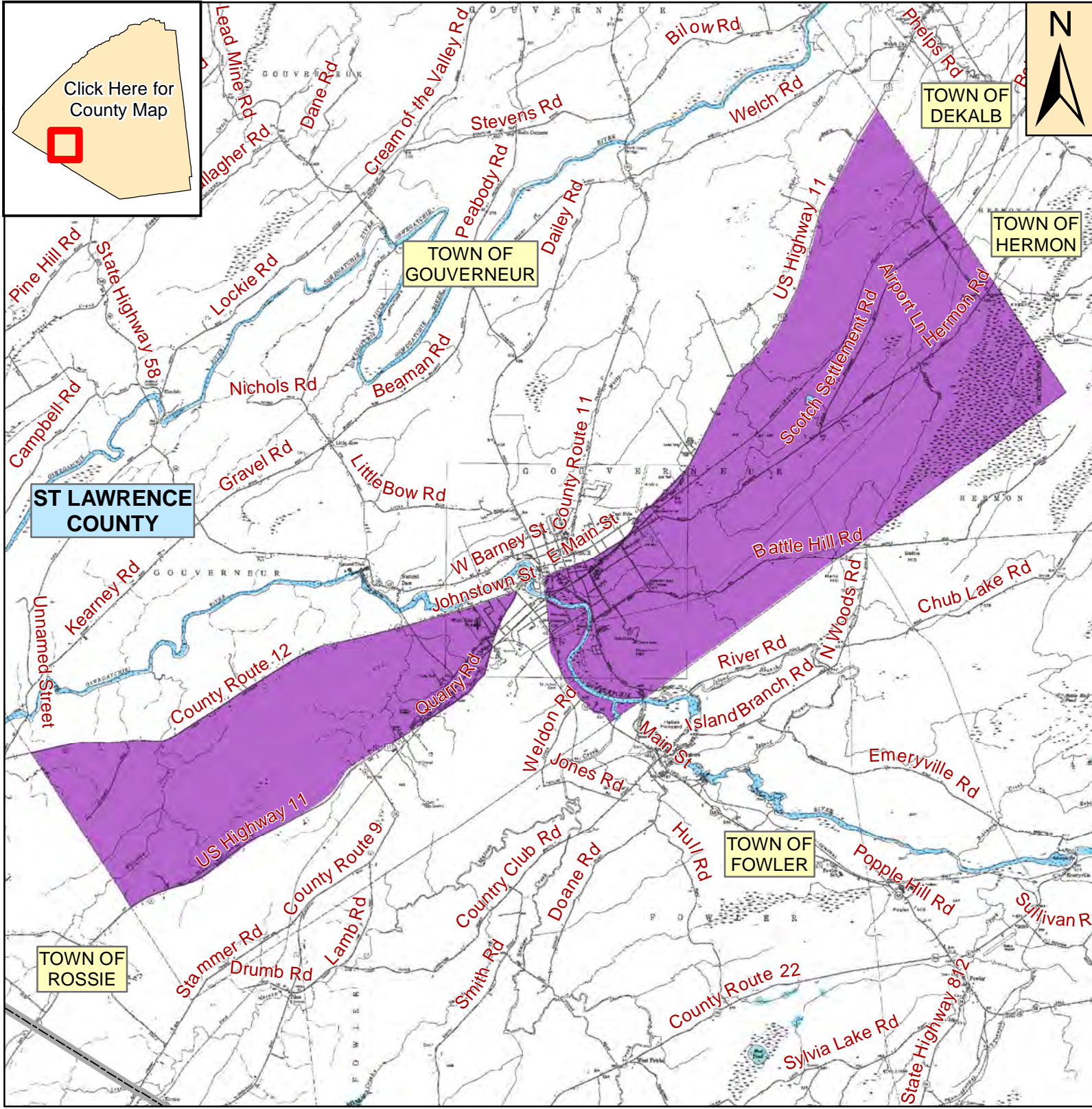
- Legend**
- Potential EJ Area
 - County Boundary
 - Waterbodies

Miles
0 0.2 0.4 0.6 0.8 1
SCALE: 1:40,000

For questions about this map contact:
New York State Department of
Environmental Conservation
Office of Environmental Justice
625 Broadway, 14th Floor
Albany, New York 12233-1500
(518) 402-8556
ej@gw.dec.state.ny.us



Potential Environmental Justice Areas in the Town of Gouverneur St. Lawrence County, New York



Click Here for County Map

ST LAWRENCE COUNTY

TOWN OF ROSSIE

TOWN OF GOVERNEUR

TOWN OF FOWLER




TOWN OF DEKALB

TOWN OF HERMON

This computer representation has been compiled from supplied data or information that has not been verified by NYSDEC. The data is offered here as a general representation only and is not to be used for commercial purposes without verification by an independent professional qualified to verify such data or information.

NYSDEC does not guarantee the accuracy, completeness, or timeliness of the information shown and shall not be liable for any loss or injury resulting from reliance.

Data Source for Potential Environmental Justice Areas: U.S. Census Bureau, 2000 U.S. Census

- Legend**
-  Potential EJ Area
 -  County Boundary
 -  Waterbodies

0 0.5 1 1.5 2 Miles
SCALE: 1:80,000

For questions about this map contact:
New York State Department of Environmental Conservation
Office of Environmental Justice
625 Broadway, 14th Floor
Albany, New York 12233-1500
(518) 402-8556
ej@gw.dec.state.ny.us

