

Appendix H

NHP and USFWS Correspondence

North Ridge

IPaC Trust Resource Report

Generated January 06, 2016 07:38 AM MST, IPaC v2.3.2

This report is for informational purposes only and should not be used for planning or analyzing project level impacts. For project reviews that require U.S. Fish & Wildlife Service review or concurrence, please return to the IPaC website and request an official species list from the Regulatory Documents page.



US Fish & Wildlife Service

IPaC Trust Resource Report



NAME

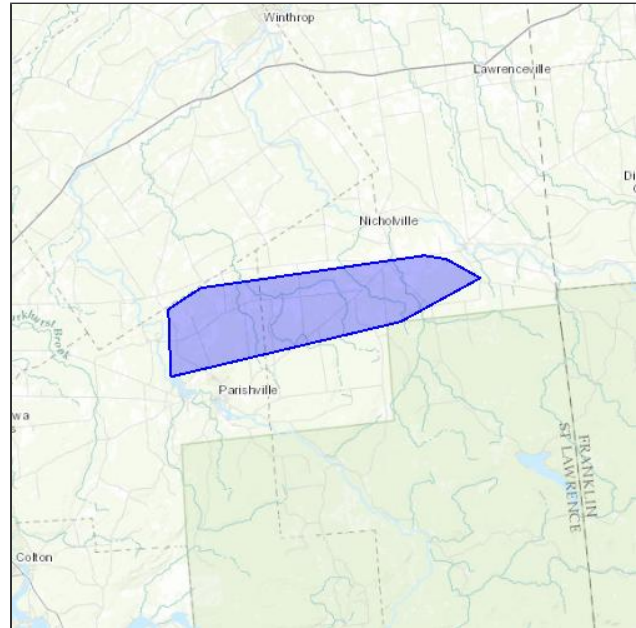
North Ridge

LOCATION

St. Lawrence County, New York

IPAC LINK

<https://ecos.fws.gov/ipac/project/BJWVOV-CB2JZ-DNDMN-CK6XO-VLB3UM>



U.S. Fish & Wildlife Contact Information

Trust resources in this location are managed by:

New York Ecological Services Field Office

3817 Luker Road

Cortland, NY 13045-9349

(607) 753-9334

Endangered Species

Proposed, candidate, threatened, and endangered species are managed by the [Endangered Species Program](#) of the U.S. Fish & Wildlife Service.

This USFWS trust resource report is for informational purposes only and should not be used for planning or analyzing project level impacts.

For project evaluations that require FWS concurrence/review, please return to the IPaC website and request an official species list from the Regulatory Documents section.

[Section 7](#) of the Endangered Species Act **requires** Federal agencies to "request of the Secretary information whether any species which is listed or proposed to be listed may be present in the area of such proposed action" for any project that is conducted, permitted, funded, or licensed by any Federal agency.

A letter from the local office and a species list which fulfills this requirement can only be obtained by requesting an official species list from the Regulatory Documents section in IPaC.

The list of species below are those that may occur or could potentially be affected by activities in this location:

Mammals

Northern Long-eared Bat *Myotis septentrionalis*

Threatened

CRITICAL HABITAT

No critical habitat has been designated for this species.

https://ecos.fws.gov/tess_public/profile/speciesProfile.action?sPCODE=A0JE

Critical Habitats

There are no critical habitats in this location

Migratory Birds

Birds are protected by the [Migratory Bird Treaty Act](#) and the [Bald and Golden Eagle Protection Act](#).

Any activity which results in the take of migratory birds or eagles is prohibited unless authorized by the U.S. Fish and Wildlife Service (1). There are no provisions for allowing the take of migratory birds that are unintentionally killed or injured.

Any person or organization who plans or conducts activities that may result in the take of migratory birds is responsible for complying with the appropriate regulations and implementing appropriate conservation measures.

Additional information can be found using the following links:

- Birds of Conservation Concern
<http://www.fws.gov/birds/management/managed-species/birds-of-conservation-concern.php>
- Conservation measures for birds
<http://www.fws.gov/birds/management/project-assessment-tools-and-guidance/conservation-measures.php>
- Year-round bird occurrence data
<http://www.fws.gov/birds/management/project-assessment-tools-and-guidance/akn-histogram-tools.php>

The following species of migratory birds could potentially be affected by activities in this location:

American Bittern *Botaurus lentiginosus*

Bird of conservation concern

Season: Breeding

https://ecos.fws.gov/tess_public/profile/speciesProfile.action?sPCODE=B0F3

Bald Eagle *Haliaeetus leucocephalus*

Bird of conservation concern

Year-round

https://ecos.fws.gov/tess_public/profile/speciesProfile.action?sPCODE=B008

Black Tern *Chlidonias niger*

Bird of conservation concern

Season: Breeding

https://ecos.fws.gov/tess_public/profile/speciesProfile.action?sPCODE=B09F

Black-billed Cuckoo *Coccyzus erythrophthalmus*

Bird of conservation concern

Season: Breeding

https://ecos.fws.gov/tess_public/profile/speciesProfile.action?sPCODE=B0HI

Black-crowned Night-heron *Nycticorax nycticorax*

Bird of conservation concern

Season: Breeding

https://ecos.fws.gov/tess_public/profile/speciesProfile.action?sPCODE=B0EU

Canada Warbler *Wilsonia canadensis*

Bird of conservation concern

Season: Breeding

Common Tern *Sterna hirundo*

Season: Breeding

https://ecos.fws.gov/tess_public/profile/speciesProfile.action?spcode=B09G

Bird of conservation concern

Golden-winged Warbler *Vermivora chrysoptera*

Season: Breeding

https://ecos.fws.gov/tess_public/profile/speciesProfile.action?spcode=B0G4

Bird of conservation concern

Least Bittern *Ixobrychus exilis*

Season: Breeding

Bird of conservation concern

Olive-sided Flycatcher *Contopus cooperi*

Season: Breeding

https://ecos.fws.gov/tess_public/profile/speciesProfile.action?spcode=B0AN

Bird of conservation concern

Peregrine Falcon *Falco peregrinus*

Season: Breeding

https://ecos.fws.gov/tess_public/profile/speciesProfile.action?spcode=B0FU

Bird of conservation concern

Pied-billed Grebe *Podilymbus podiceps*

Season: Breeding

Bird of conservation concern

Red-headed Woodpecker *Melanerpes erythrocephalus*

Season: Breeding

Bird of conservation concern

Short-eared Owl *Asio flammeus*

Season: Wintering

https://ecos.fws.gov/tess_public/profile/speciesProfile.action?spcode=B0HD

Bird of conservation concern

Willow Flycatcher *Empidonax traillii*

Season: Breeding

https://ecos.fws.gov/tess_public/profile/speciesProfile.action?spcode=B0F6

Bird of conservation concern

Wood Thrush *Hylocichla mustelina*

Season: Breeding

Bird of conservation concern

Yellow Rail *Coturnicops noveboracensis*

Season: Breeding

https://ecos.fws.gov/tess_public/profile/speciesProfile.action?spcode=B0JG

Bird of conservation concern

Refuges

Any activity proposed on [National Wildlife Refuge](#) lands must undergo a 'Compatibility Determination' conducted by the Refuge. Please contact the individual Refuges to discuss any questions or concerns.

Refuge data is unavailable at this time.

Wetlands in the National Wetlands Inventory

Impacts to [NWI wetlands](#) and other aquatic habitats may be subject to regulation under Section 404 of the Clean Water Act, or other State/Federal Statutes.

For more information please contact the Regulatory Program of the local [U.S. Army Corps of Engineers District](#).

DATA LIMITATIONS

The Service's objective of mapping wetlands and deepwater habitats is to produce reconnaissance level information on the location, type and size of these resources. The maps are prepared from the analysis of high altitude imagery. Wetlands are identified based on vegetation, visible hydrology and geography. A margin of error is inherent in the use of imagery; thus, detailed on-the-ground inspection of any particular site may result in revision of the wetland boundaries or classification established through image analysis.

The accuracy of image interpretation depends on the quality of the imagery, the experience of the image analysts, the amount and quality of the collateral data and the amount of ground truth verification work conducted. Metadata should be consulted to determine the date of the source imagery used and any mapping problems.

Wetlands or other mapped features may have changed since the date of the imagery or field work. There may be occasional differences in polygon boundaries or classifications between the information depicted on the map and the actual conditions on site.

DATA EXCLUSIONS

Certain wetland habitats are excluded from the National mapping program because of the limitations of aerial imagery as the primary data source used to detect wetlands. These habitats include seagrasses or submerged aquatic vegetation that are found in the intertidal and subtidal zones of estuaries and nearshore coastal waters. Some deepwater reef communities (coral or tubercid worm reefs) have also been excluded from the inventory. These habitats, because of their depth, go undetected by aerial imagery.

DATA PRECAUTIONS

Federal, state, and local regulatory agencies with jurisdiction over wetlands may define and describe wetlands in a different manner than that used in this inventory. There is no attempt, in either the design or products of this inventory, to define the limits of proprietary jurisdiction of any Federal, state, or local government or to establish the geographical scope of the regulatory programs of government agencies. Persons intending to engage in activities involving modifications within or adjacent to wetland areas should seek the advice of appropriate federal, state, or local agencies concerning specified agency regulatory programs and proprietary jurisdictions that may affect such activities.

This location overlaps all or part of the following wetlands:

Freshwater Emergent Wetland

PEM5Bd	34.8 acres
PEM5Eb	17.4 acres
PEM5Fh	10.6 acres
PEM5C	10.6 acres
PEM5E	9.92 acres
PEM5A	1.66 acres
PEM5Cd	1.46 acres

Freshwater Forested/shrub Wetland

PSS1E	178.0 acres
	140.0 acres

<u>PFO4B</u>	
<u>PFO1E</u>	38.5 acres
<u>PFO1C</u>	35.7 acres
<u>PSS1/EM5E</u>	32.2 acres
<u>PSS1A</u>	23.6 acres
<u>PFO1B</u>	10.9 acres
<u>PSS1/FO1C</u>	10.8 acres
<u>PFO5Hb</u>	10.7 acres
<u>PSS1Ad</u>	8.89 acres
<u>PSS1F</u>	7.69 acres
<u>PSS1Fb</u>	5.3 acres
<u>PSS1/EM5A</u>	5.17 acres
<u>PSS1B</u>	5.06 acres
<u>PFO4/SS3Ba</u>	4.53 acres
<u>PFO1/SS1E</u>	4.3 acres
<u>PSS1C</u>	2.92 acres
<u>PSS3/4Ba</u>	2.68 acres

Freshwater Pond

<u>PUBHb</u>	12.2 acres
<u>PUBHx</u>	3.34 acres
<u>PUBH</u>	1.9 acres
<u>PUBHh</u>	1.68 acres

A full description for each wetland code can be found at the National Wetlands Inventory website: <http://107.20.228.18/decoders/wetlands.aspx>



Environmental Design & Research,
Landscape Architecture, Engineering & Environmental Services, D.P.C.
217 Montgomery Street, Suite 1000, Syracuse, New York 13202
P. 315.471.0688 • F. 315.471.1061 • www.edrdpc.com

January 4, 2016

Andrea Chaloux
Environmental Review Specialist
New York Natural Heritage Program
625 Broadway, 5th Floor
Albany, NY 12233-4757

**RE: North Ridge Wind Project
EDR Project No. 15128**

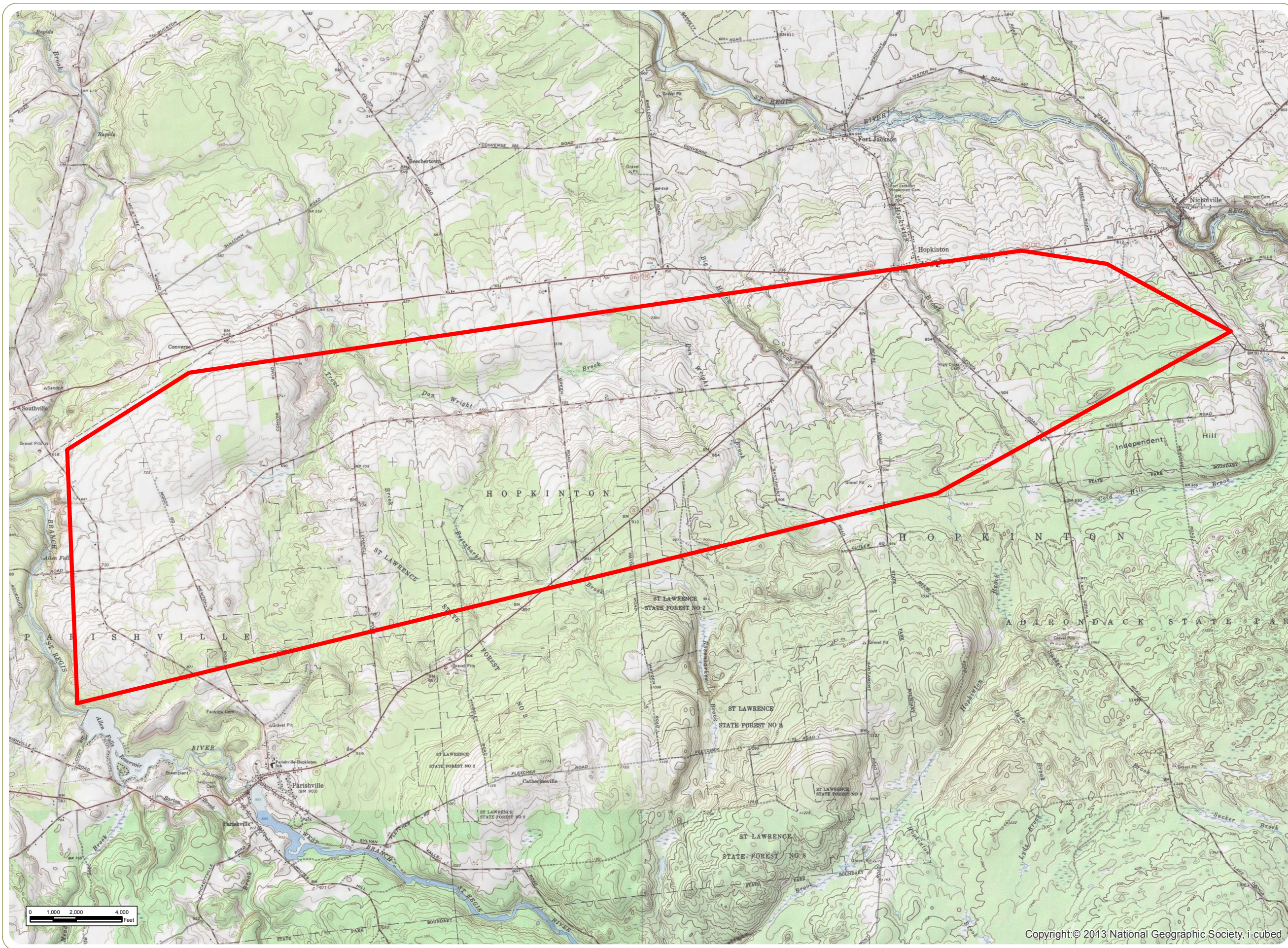
Dear Ms. Chaloux:

Environmental Design and Research is compiling ecological information as part of an environmental review for a proposed wind turbine electrical generation project in the Towns of Parishville and Hopkinton, St. Lawrence County, New York. Please accept this request for any information you may have concerning documented endangered and threatened wildlife, significant ecological communities, and/or rare plant species in this area. I have enclosed a map of the project site, which is located on the Parishville and Nicholville USGS Quadrangles.

If you have any questions regarding this data request or require additional project information, please do not hesitate to contact me at 315-471-0688, or dbarbato@edrdpc.com. Thank you in advance for your attention to this request. I look forward to receiving your input on this project.

Sincerely,

Dan Barbato
Environmental Analyst



North Ridge Wind

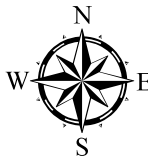
Towns of Hopkinton and
Parishville, St. Lawrence County

Preliminary Field Maps

January 2016

 Project Area

- Notes:**
1. Basemap: ESRI ArcGIS Online USA Topomaps Basemap Service.
 2. This is a color graphic. Reproduction in grayscale may misrepresent the data.



www.edrdpc.com

Copyright © 2013 National Geographic Society, i-cubed

NEW YORK STATE DEPARTMENT OF ENVIRONMENTAL CONSERVATION
Division of Fish, Wildlife & Marine Resources
New York Natural Heritage Program
625 Broadway, 5th Floor, Albany, New York 12233-4757
Phone: (518) 402-8935 • **Fax:** (518) 402-8925
Website: www.dec.ny.gov



January 14, 2016

Dan Barbato
Environmental Design & Research
217 Montgomery Street, Suite 1000
Syracuse, NY 13202

Dear Mr. Barbato:

In response to your recent request, we have reviewed the New York Natural Heritage Program database with respect to the proposed North Ridge Wind Project (EDR No. 15128), located in the Towns of Parishville and Hopkinton, St. Lawrence County.

Enclosed is a report of rare or state-listed animals and plants, and significant natural communities, which our databases indicate occur, or may occur, on your site or in the immediate vicinity of your site.

Also enclosed is a report of rare birds documented within 10 miles of the project site, and rare bats documented within 40 miles of the project site, for use in assessing potential impacts of bird and bat collisions. For information on NYSDEC's environmental review of proposed wind energy projects, and for the document *Guidelines for Conducting Bird and Bat Studies at Commercial Wind Energy Projects*, please go to www.dec.ny.gov/energy/66494.html.

For most sites, comprehensive field surveys have not been conducted; the enclosed report only includes records from our databases. We cannot provide a definitive statement as to the presence or absence of all rare or state-listed species or significant natural communities. Depending on the nature of the project and the conditions at the project site, further information from on-site surveys or other resources may be required to fully assess impacts on biological resources.

Our databases are continually growing as records are added and updated. If this proposed project is still under development one year from now, we recommend that you contact us again so that we may update this response with the most current information.

Sincerely,

Nicholas B. Conrad
Information Resources Coordinator
NY Natural Heritage Program



**The following rare plants have been documented
at your project site, or in its vicinity.**

We recommend that potential onsite and offsite impacts of the proposed project on these species be addressed as part of any environmental assessment or review conducted as part of the planning, permitting and approval process, such as reviews conducted under SEQR. Field surveys of the project site may be necessary to determine the status of a species at the site, particularly for sites that are currently undeveloped and may still contain suitable habitat. Final requirements of the project to avoid, minimize, or mitigate potential impacts are determined by the lead permitting agency or the government body approving the project.

The following plants are listed as Endangered or Threatened by New York State, and/or are considered rare by the New York Natural Heritage Program, and so are a vulnerable natural resource of conservation concern.

COMMON NAME	SCIENTIFIC NAME	NY STATE LISTING	HERITAGE CONSERVATION STATUS
Vascular Plants			
<u>Parishville Desert</u> is between Newton Road and County Route 47 (Parishville-Southville Road), just north of their intersection, and just south of the North Ridge Wind Project Area in the Town of Parishville.			
Schweinitz's Flatsedge	<i>Cyperus schweinitzii</i>	Rare	Vulnerable in NYS
Parishville Desert, 2005-07-30: Scotch pine and sand barrens. There are some graminoid patches. Vegetation is sparse. The habitat is open sand.			
Fernald's Sedge	<i>Carex merriitt-fernaldii</i>	Threatened	Imperiled in NYS
Parishville Desert, 2004-06-18: An open and vegetated area on sand by an aqueduct and power house.			
<u>Historical records from Parishville</u>			
Rugulose Grape Fern	<i>Botrychium rugulosum</i>	Endangered	Critically Imperiled in NYS and Globally Uncommon
1949: Old pastures, 2 miles west of Parishville, and one mile east of Parishville.			

This report only includes records from the NY Natural Heritage database. For most sites, comprehensive field surveys have not been conducted, and we cannot provide a definitive statement as to the presence or absence of all rare or state-listed species. Depending on the nature of the project and the conditions at the project site, further information from on-site surveys or other sources may be required to fully assess impacts on biological resources.

If any rare plants or animals are documented during site visits, we request that information on the observations be provided to the New York Natural Heritage Program so that we may update our database.

Information about many of the rare animals and plants in New York, including habitat, biology, identification, conservation, and management, are available online in Natural Heritage's Conservation Guides at www.guides.nynhp.org, from NatureServe Explorer at www.natureserve.org/explorer, and from USDA's Plants Database at <http://plants.usda.gov/index.html> (for plants).



**The following rare animals have been documented in the
general vicinity of your proposed wind power project.**

The impacts of wind turbines on animals include both impacts due to disturbance at the site of the turbines, and impacts due to flying birds and bats colliding with turbine blades. Therefore, when screening proposed wind energy projects for potential impacts on rare species, in addition to reporting rare plants and animals documented at the project site itself, NY Natural Heritage reports species of rare birds documented within 10 miles of the project site, and rare bats documented within 40 miles of the project site. These distances were determined in consultation with the NYSDEC Division of Fish, Wildlife and Marine Resources.

For information on NYSDEC's environmental review of proposed wind energy projects, and for the document *Guidelines for Conducting Bird and Bat Studies at Commercial Wind Energy Projects*, please go to www.dec.ny.gov/energy/66494.html.

Bats within 40 miles

COMMON NAME	SCIENTIFIC NAME	NY STATE LISTING	HERITAGE CONSERVATION STATUS*
Northern Long-eared Bat <i>Hibernaculum</i>	<i>Myotis septentrionalis</i>	Threatened and Federally Listed as Threatened	S3S4

Birds within 10 miles

COMMON NAME	SCIENTIFIC NAME	NY STATE LISTING	HERITAGE CONSERVATION STATUS*
Common Loon <i>Breeding</i>	<i>Gavia immer</i>	Special Concern	S4
Short-eared Owl <i>Breeding</i>	<i>Asio flammeus</i>	Endangered	S2
Northern Harrier <i>Breeding</i>	<i>Circus cyaneus</i>	Threatened	S3B,S3N
Upland Sandpiper <i>Breeding</i>	<i>Bartramia longicauda</i>	Threatened	S3B
Pied-billed Grebe <i>Breeding</i>	<i>Podilymbus podiceps</i>	Threatened	S3B,S1N

* Conservation status in NYS as ranked by NY Natural Heritage Program on a 1 to 5 scale:

S1 = Critically imperiled

S2 = Imperiled

S3 = Rare or uncommon

S4 = Abundant and apparently secure

S5 = Demonstrably abundant and secure

B after one of the above ranks indicates the status rank is for breeding populations only.

N after one of the above ranks indicates the status rank is for nonbreeding wintering populations only.