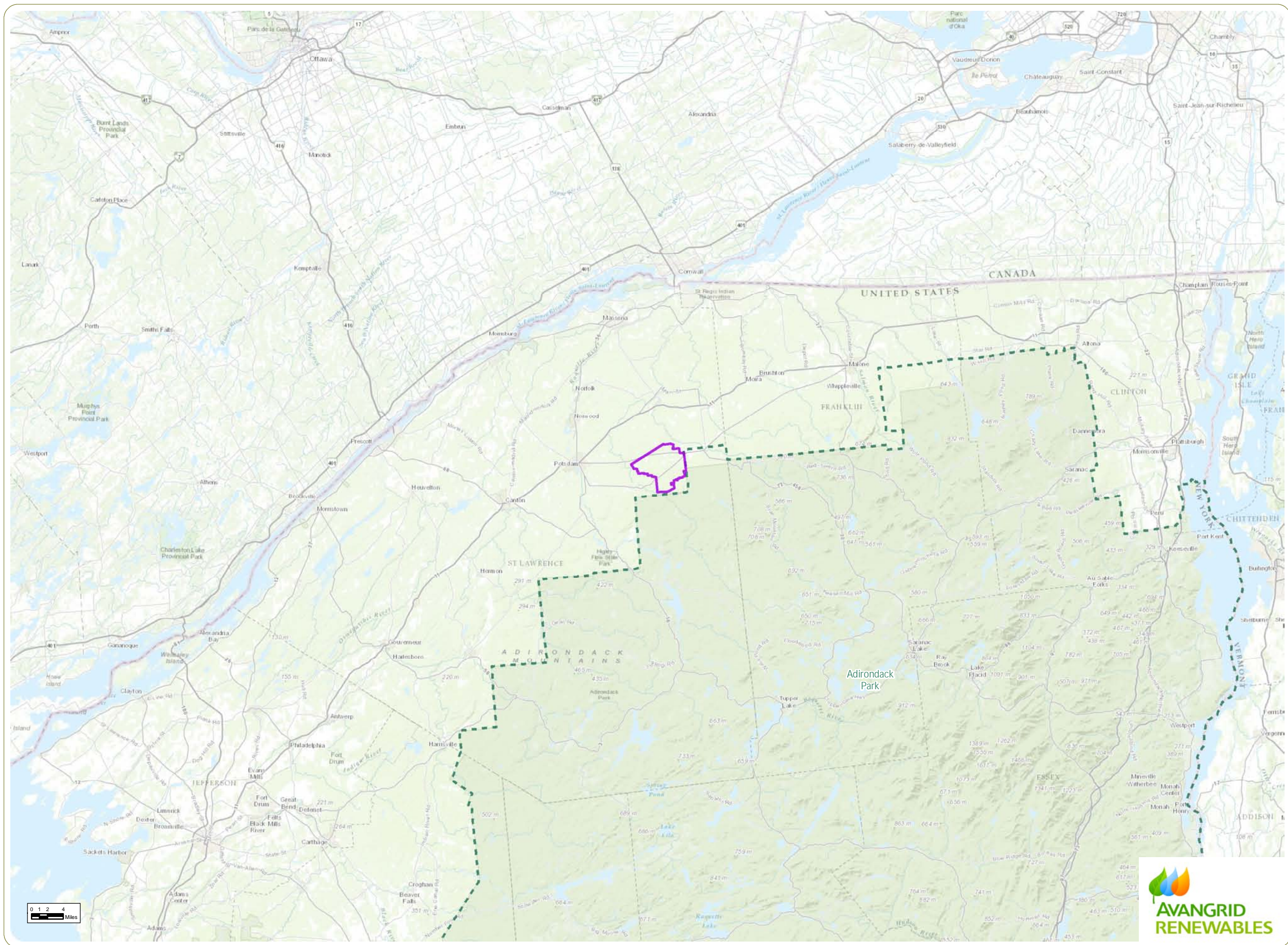


Figures



North Ridge Wind Farm

Towns of Hopkinton and Parishville, St. Lawrence County, New York

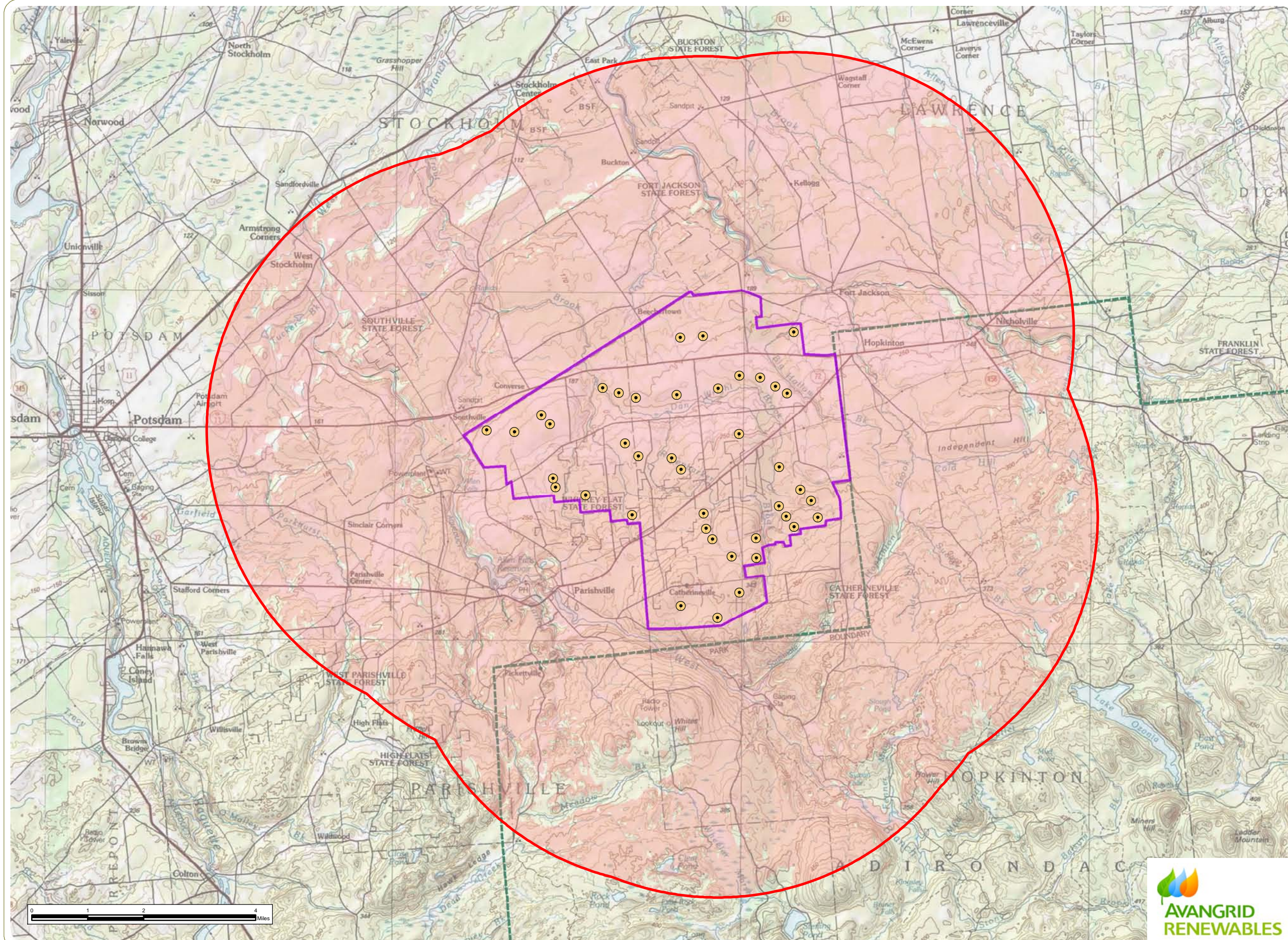
Figure 1: Regional Facility Location

- Facility Area
- Adirondack Park Boundary

Notes:
1. Basemap: ESRI ArcGIS Online "World Topographic Map" map service.
2. This map was generated in ArcMap on April 4, 2017.
3. This is a color graphic. Reproduction in grayscale may misrepresent the data.



www.edrdpc.com



North Ridge Wind Farm

Towns of Hopkinton and Parishville, St. Lawrence County, New York

Figure 2: Facility Layout and Area of Potential Effect

- Wind Turbine
- Adirondack Park Boundary
- Facility Area
- 5-Mile Study Area
- Potential Facility Visibility (Area of Potential Effect for Indirect [Visual] Effects)

Notes:

1. Basemap: ESRI ArcGIS Online "USA Topo Maps" map service.
2. Potential turbine [or FAA warning light, substation, etc.] visibility based on topography only. Screening effects of buildings, trees or other factors are not accounted for.
3. This map was generated in ArcMap on April 4, 2017.
4. This is a color graphic. Reproduction in grayscale may misrepresent the data.



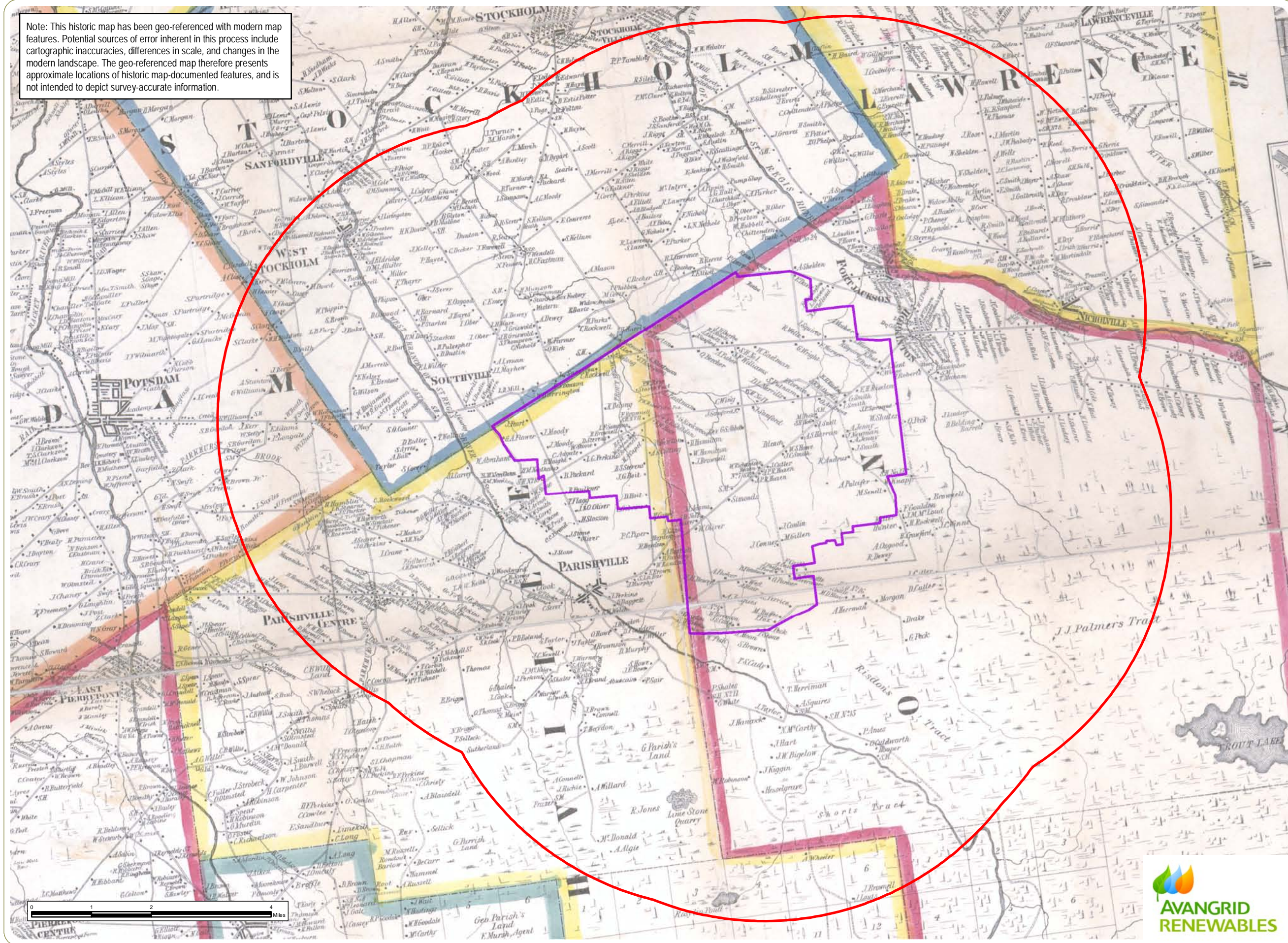
www.edrdpc.com

Note: This historic map has been geo-referenced with modern map features. Potential sources of error inherent in this process include cartographic inaccuracies, differences in scale, and changes in the modern landscape. The geo-referenced map therefore presents approximate locations of historic map-documented features, and is not intended to depict survey-accurate information.

North Ridge Wind Farm

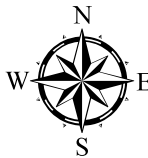
Towns of Hopkinton and Parishville, St. Lawrence County, New York

Figure 4: 1858 Rogerson *Map of St. Lawrence Co., New York*



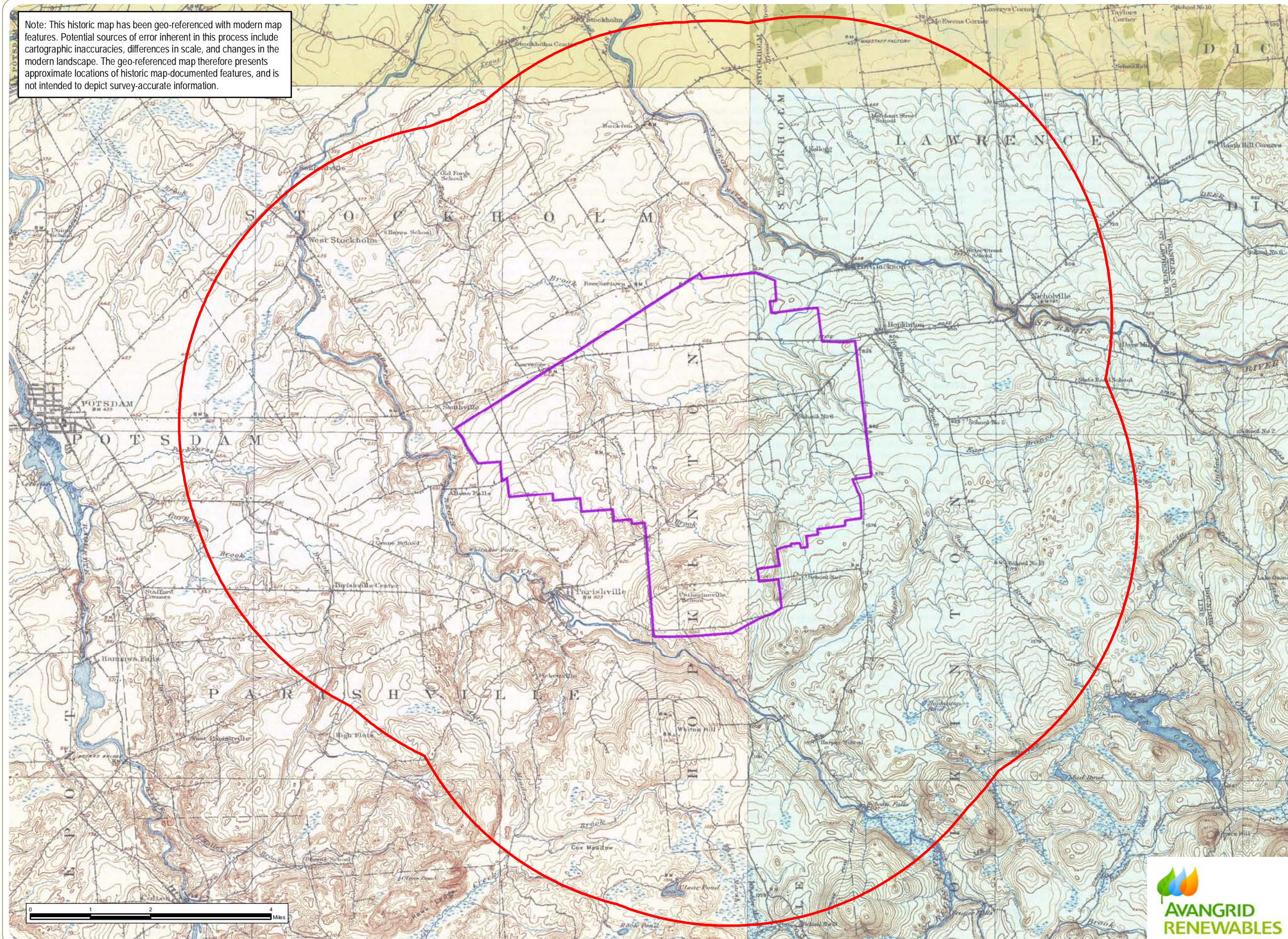
Facility Area
5-Mile Study Area

Notes:
1. Basemap: 1858 Rogerson *Map of St. Lawrence Co., New York*
2. This map was generated in ArcMap on April 4, 2017.
3. This is a color graphic. Reproduction in grayscale may misrepresent the data.



www.edrdpc.com



Note: This historic map has been geo-referenced with modern map features. Potential sources of error inherent in this process include cartographic inaccuracies, differences in scale, and changes in the modern landscape. The geo-referenced map therefore presents approximate locations of historic map-documented features, and is not intended to depict survey-accurate information.



North Ridge Wind Farm

Towns of Hopkinton and Parishville, St. Lawrence County, New York

Figure 5:
1907 USGS *Massena, NY*,
1908 *Potsdam, NY*,
1917 *Moir, NY* and
1921 *Nicholville, NY*:62500
topographic quadrangles.

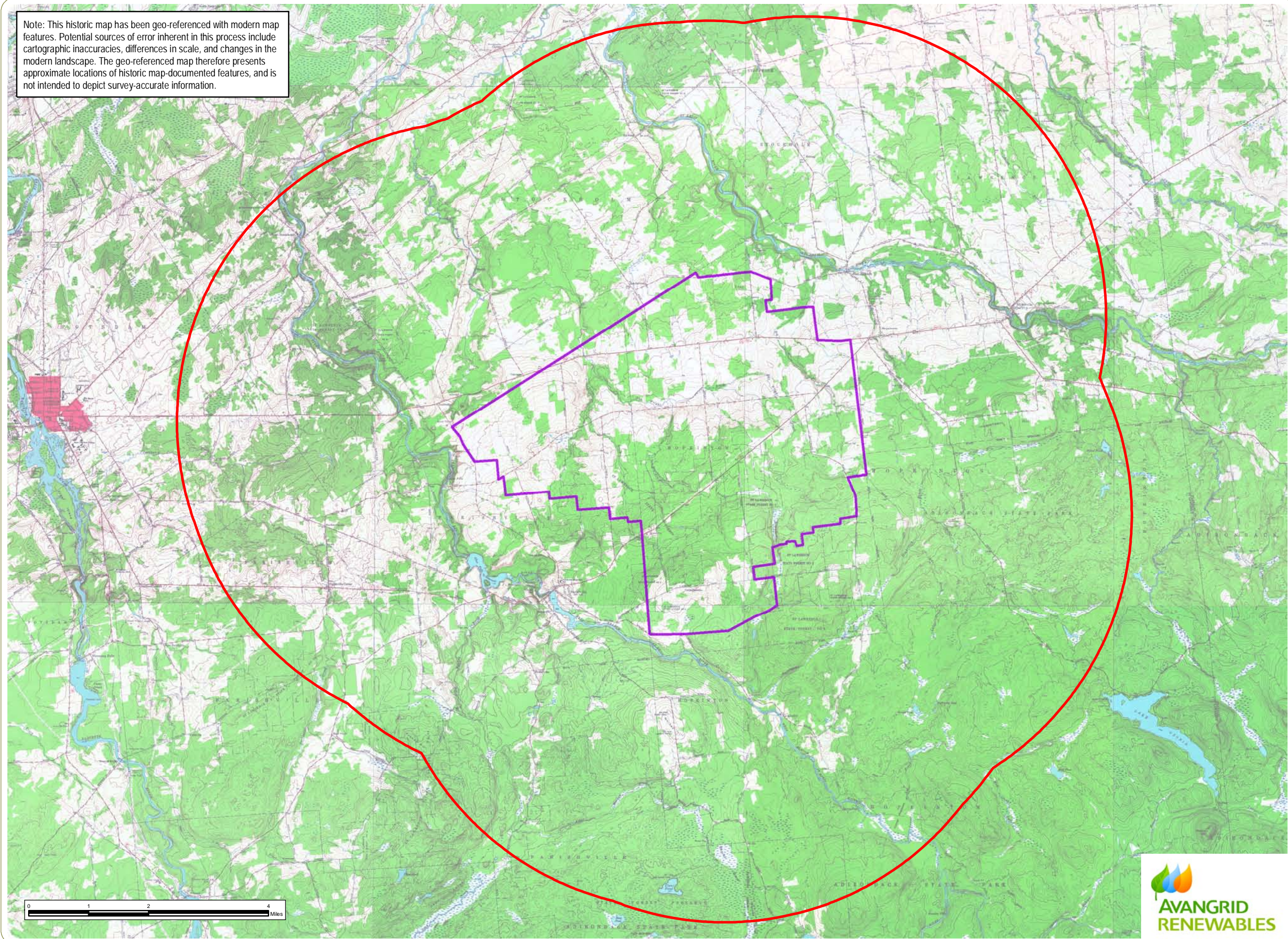
-  Facility Area
-  5-Mile Study Area

Notes:
1. Basemap: 1907 USGS *Massena, NY*,
1908 *Potsdam, NY*, 1917 *Moir, NY*,
and 1921 *Nicholville, NY*:62500
topographic quadrangles.
2. This map was generated in ArcMap on
April 4, 2017.
3. This is a color graphic. Reproduction in
grayscale may misrepresent the data.



www.edrdpc.com

Note: This historic map has been geo-referenced with modern map features. Potential sources of error inherent in this process include cartographic inaccuracies, differences in scale, and changes in the modern landscape. The geo-referenced map therefore presents approximate locations of historic map-documented features, and is not intended to depict survey-accurate information.



North Ridge Wind Farm

Towns of Hopkinton and Parishville, St. Lawrence County, New York

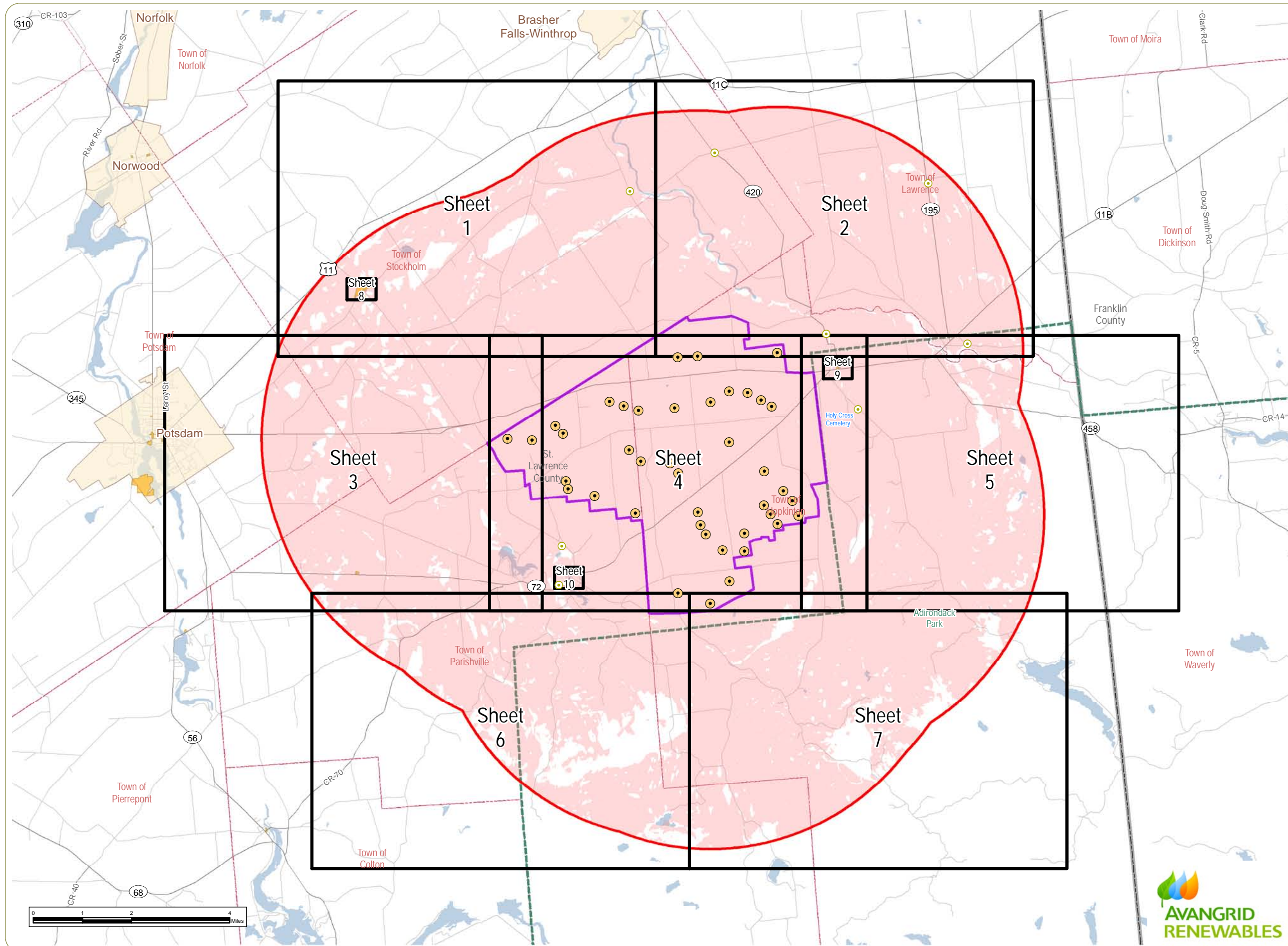
Figure 6:
1964 USGS *Brasher Falls, NY, Brushton, NY, Colton, NY, Lake Otonia, NY, Nicholville, NY, Norfolk, NY, North Lawrence, NY, Parishville, NY, Potsdam, NY, Rainbow Falls, NY, St. Regis Falls, NY, and Sylvan Falls, NY* 1:24000 topographic quadrangles.

- Facility Area
- 5-Mile Study Area

Notes:
1. Basemap: 1964 USGS *Brasher Falls, NY, Brushton, NY, Colton, NY, Lake Otonia, NY, Nicholville, NY, Norfolk, NY, North Lawrence, NY, Parishville, NY, Potsdam, NY, Rainbow Falls, NY, St. Regis Falls, NY, and Sylvan Falls, NY* 1:24000 topographic quadrangles.
2. This map was generated in ArcMap on April 4, 2017.
3. This is a color graphic. Reproduction in grayscale may misrepresent the data.



www.edrdpc.com



North Ridge Wind Farm

Towns of Hopkinton and Parishville, St. Lawrence County, New York

Figure 7:
Existing Conditions
(Sheet Index)

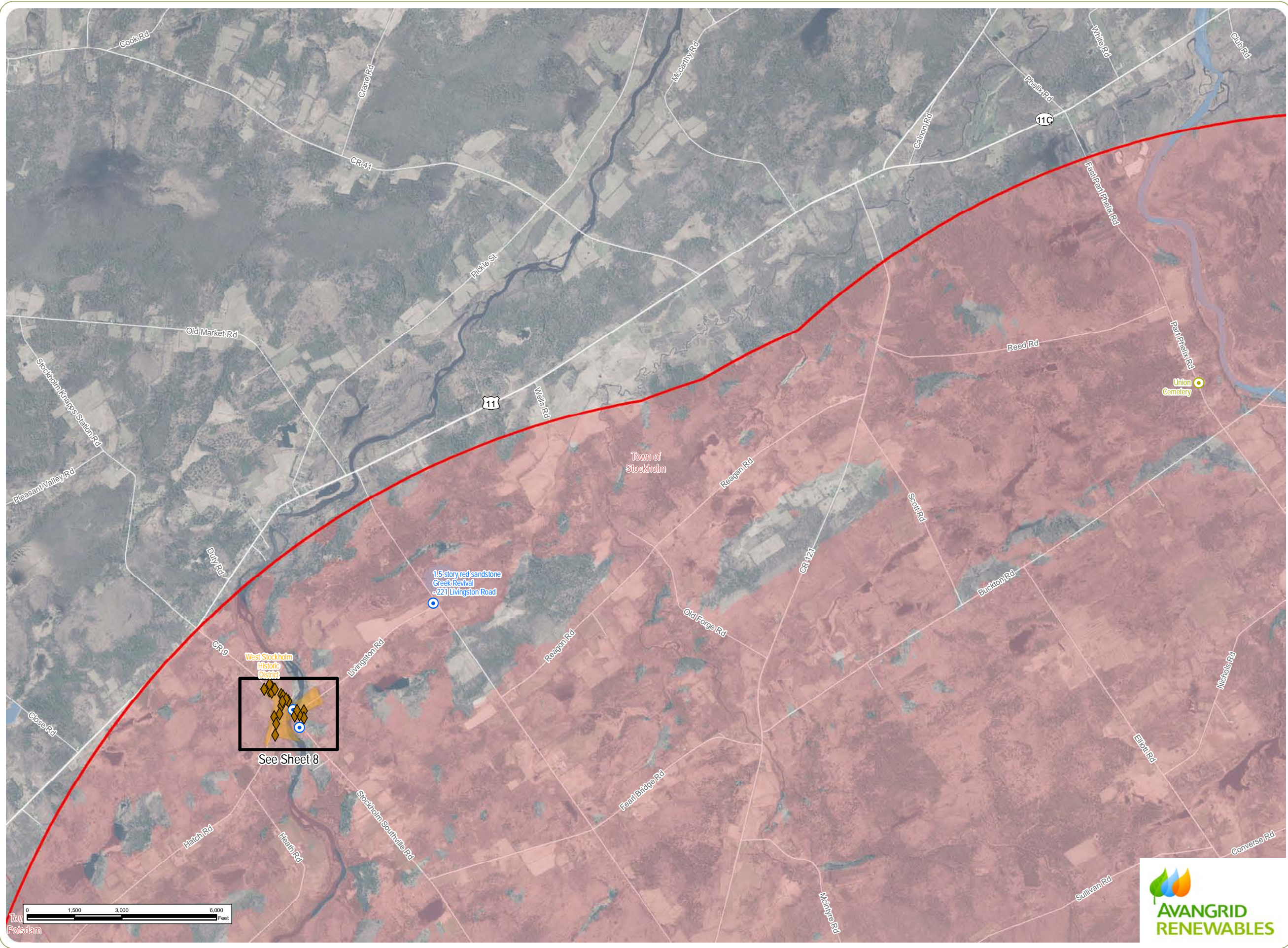
- Wind Turbine
- NRHP-Eligible Resource
- NRHP Eligibility Undetermined
- Resource Not Previously Surveyed
- NRHP-Listed Resource
- Potential Facility Visibility (Area of Potential Effect for Indirect [Visual] Effects)
- Index Sheet
- Facility Area
- 5-Mile Study Area
- Adirondack Park Boundary
- Town Boundary
- County Boundary

Notes:

1. Basemap: ESRI StreetMap North America, 2008.
2. Potential turbine [or FAA warning light, substation, etc.] visibility based on topography only. Screening effects of buildings, trees or other factors are not accounted for.
3. This map was generated in ArcMap on April 4, 2017.
4. This is a color graphic. Reproduction in grayscale may misrepresent the data.



www.edrdpc.com



North Ridge Wind Farm

Towns of Hopkinton and Parishville, St. Lawrence County, New York

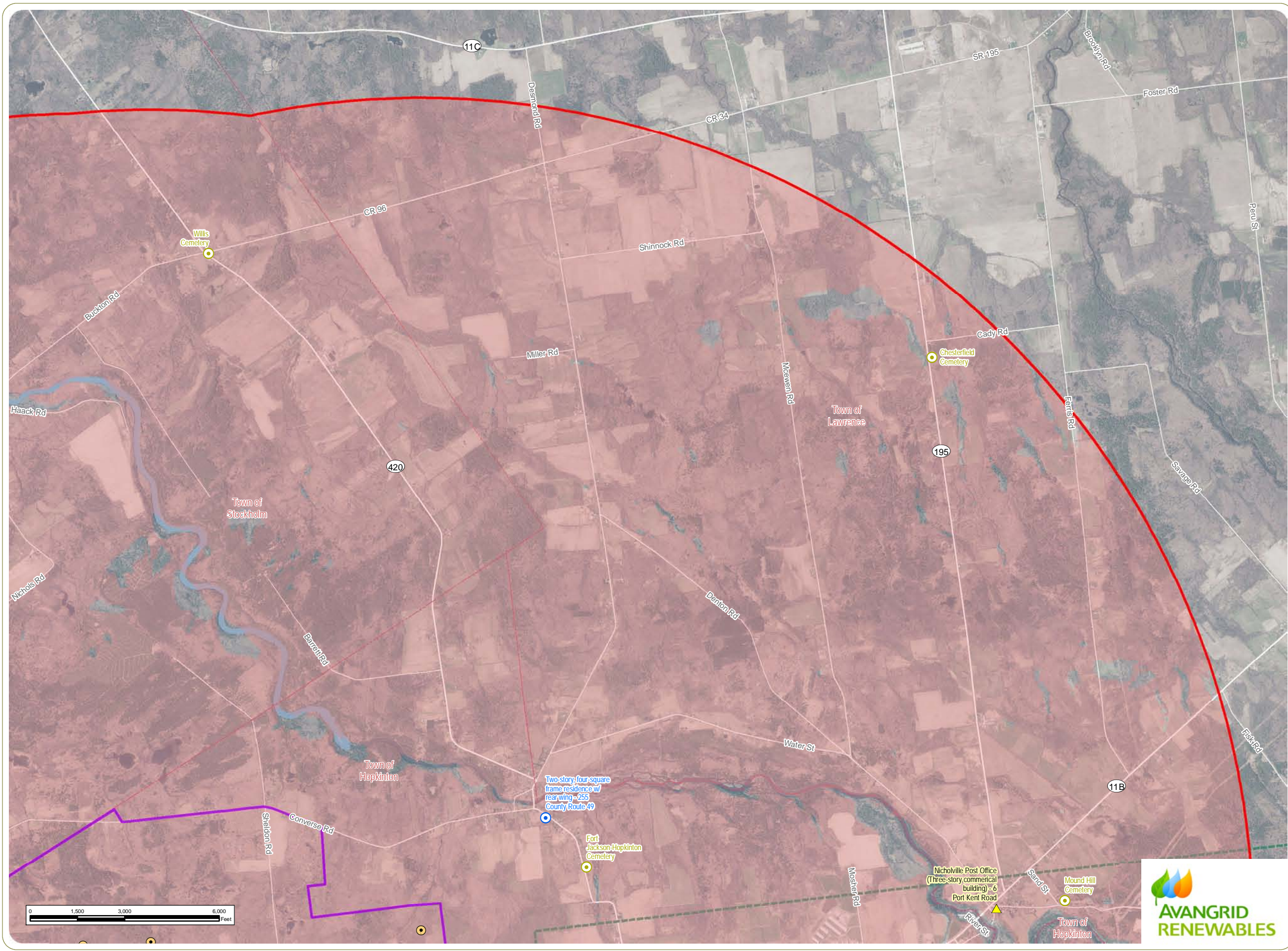
Figure 7:
Existing Conditions
Sheet 1 of 10

- Wind Turbine
- NRHP-Listed Resource (District)
- NRHP-Eligible Resource
- NRHP Eligibility Undetermined
- Resource Not Previously Surveyed
- NRHP-Listed Resource
- Potential Facility Visibility (Area of Potential Effect for Indirect [Visual] Effects)
- Facility Area
- 5-Mile Study Area
- Adirondack Park Boundary
- Town Boundary

Notes:
1. Basemap: NYSDOP "2014" orthoimagery map service.
2. Potential turbine [or FAA warning light, substation, etc.] visibility based on topography only. Screening effects of buildings, trees or other factors are not accounted for.
3. This map was generated in ArcMap on April 4, 2017.
4. This is a color graphic. Reproduction in grayscale may misrepresent the data.



www.edrdpc.com



North Ridge Wind Farm

Towns of Hopkinton and Parishville, St. Lawrence County, New York

Figure 7:
Existing Conditions
Sheet 2 of 10

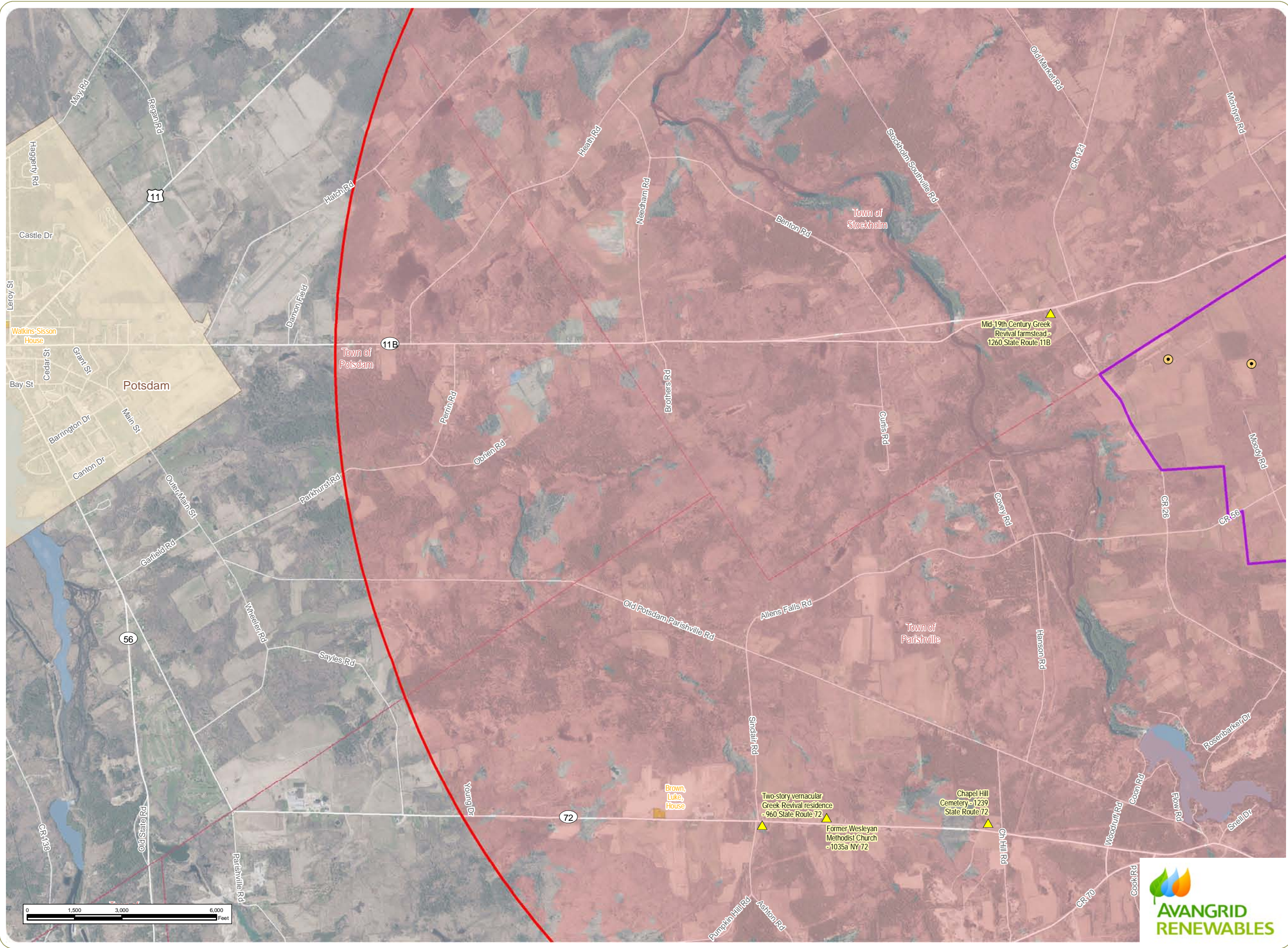
- Wind Turbine
- NRHP-Listed Resource (District)
- NRHP-Eligible Resource
- NRHP Eligibility Undetermined
- Resource Not Previously Surveyed
- NRHP-Listed Resource
- Potential Facility Visibility (Area of Potential Effect for Indirect [Visual] Effects)
- Facility Area
- 5-Mile Study Area
- Adirondack Park Boundary
- Town Boundary

Notes:
1. Basemap: NYSDOP "2014" orthoimagery map service.
2. Potential turbine [or FAA warning light, substation, etc.] visibility based on topography only. Screening effects of buildings, trees or other factors are not accounted for.
3. This map was generated in ArcMap on April 4, 2017.
4. This is a color graphic. Reproduction in grayscale may misrepresent the data.



www.edrdpc.com





North Ridge Wind Farm

Towns of Hopkinton and Parishville, St. Lawrence County, New York

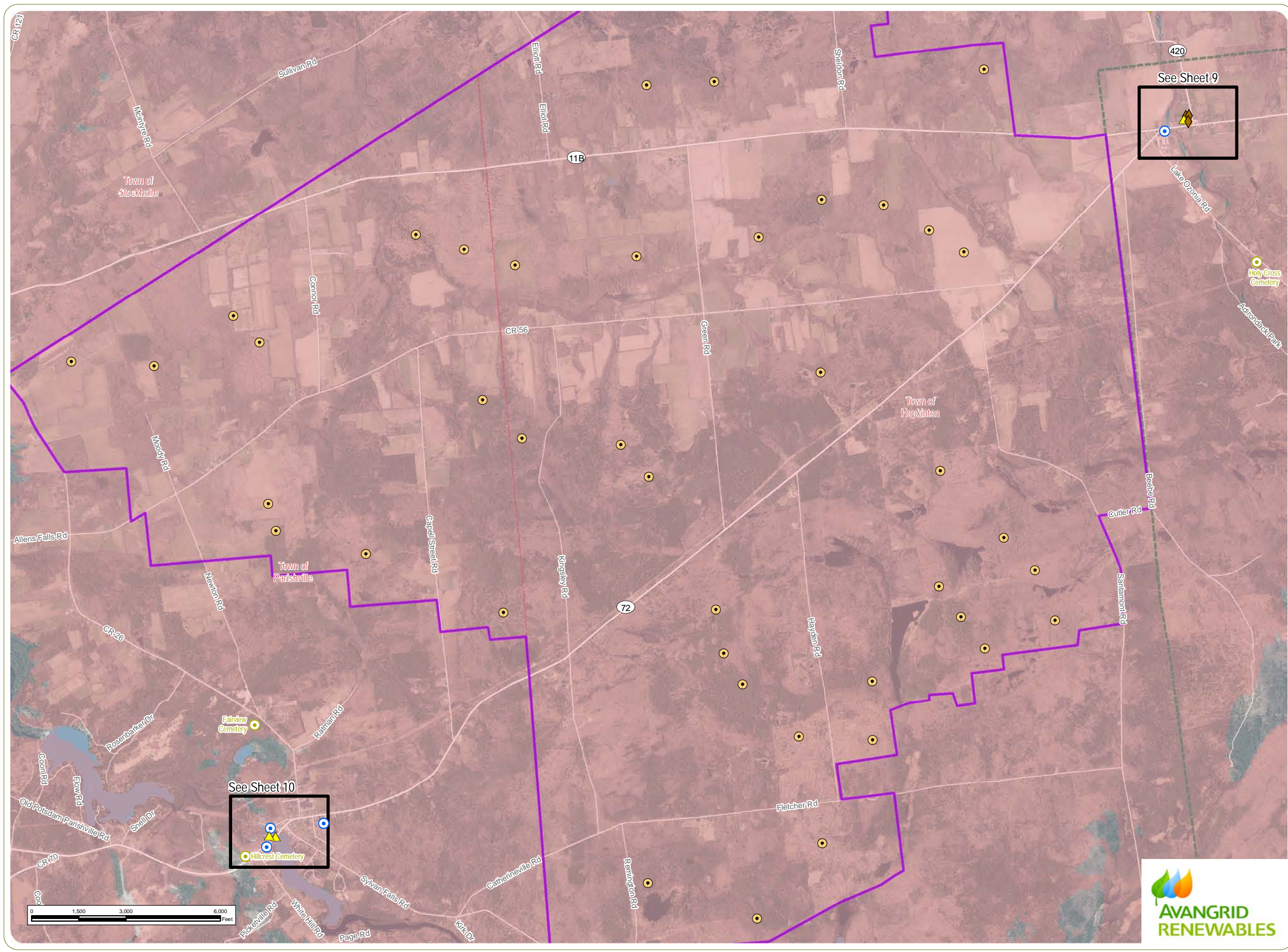
Figure 7:
Existing Conditions
Sheet 3 of 10

- Wind Turbine
- NRHP-Listed Resource (District)
- NRHP-Eligible Resource
- NRHP Eligibility Undetermined
- Resource Not Previously Surveyed
- NRHP-Listed Resource
- Potential Facility Visibility (Area of Potential Effect for Indirect [Visual] Effects)
- Facility Area
- 5-Mile Study Area
- Adirondack Park Boundary
- Town Boundary

Notes:
1. Basemap: NYSDOP "2014" orthoimagery map service.
2. Potential turbine [or FAA warning light, substation, etc.] visibility based on topography only. Screening effects of buildings, trees or other factors are not accounted for.
3. This map was generated in ArcMap on April 4, 2017.
4. This is a color graphic. Reproduction in grayscale may misrepresent the data.



www.edrdpc.com



North Ridge Wind Farm

Towns of Hopkinton and Parishville, St. Lawrence County, New York

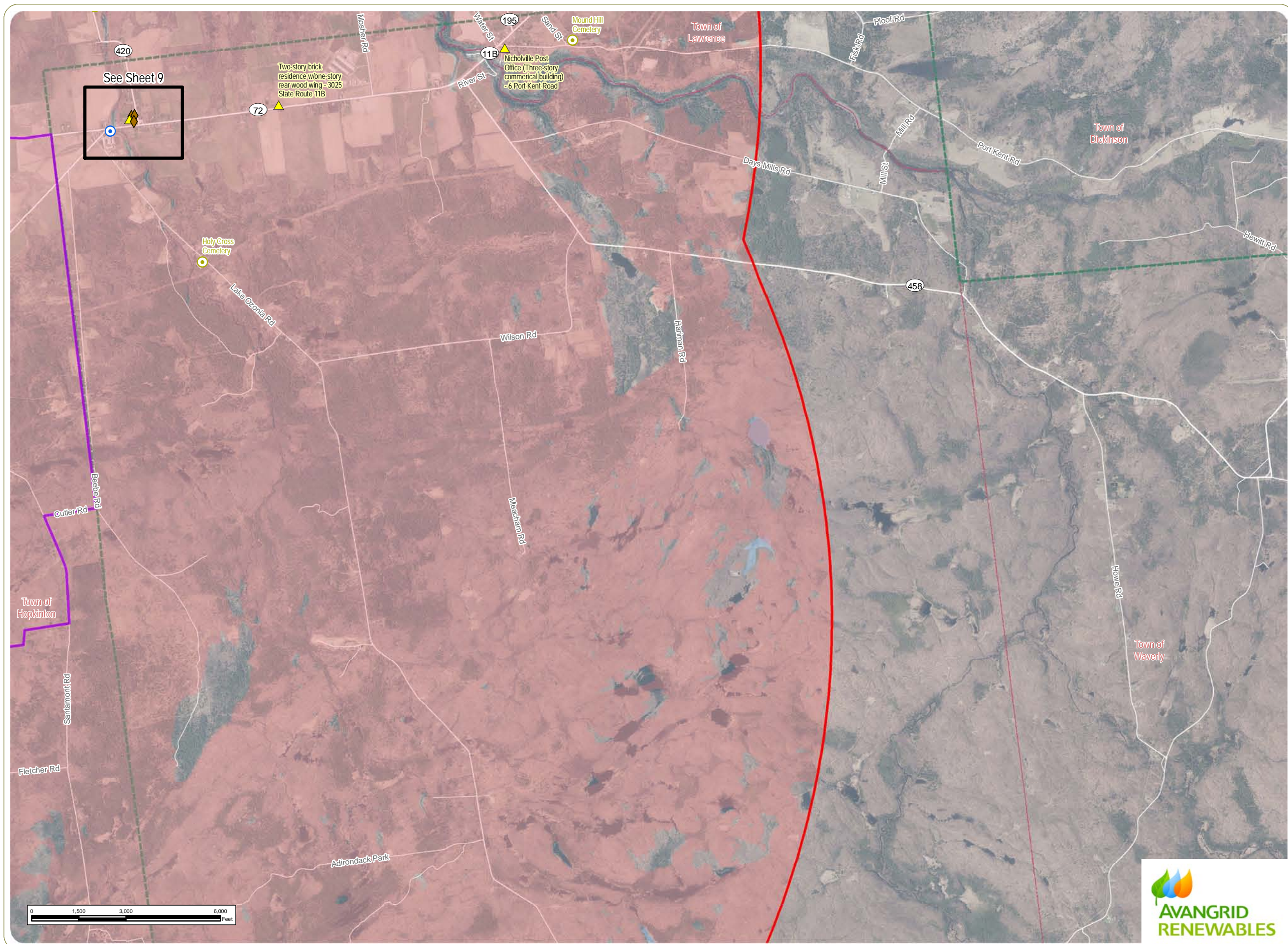
Figure 7:
Existing Conditions
Sheet 4 of 10

- Wind Turbine
- NRHP-Listed Resource (District)
- NRHP-Eligible Resource
- NRHP Eligibility Undetermined
- Resource Not Previously Surveyed
- NRHP-Listed Resource
- Potential Facility Visibility (Area of Potential Effect for Indirect [Visual] Effects)
- Facility Area
- 5-Mile Study Area
- Adirondack Park Boundary
- Town Boundary

Notes:
1. Basemap: NYSDOP "2014" orthoimagery map service.
2. Potential turbine [or FAA warning light, substation, etc.] visibility based on topography only. Screening effects of buildings, trees or other factors are not accounted for.
3. This map was generated in ArcMap on April 4, 2017.
4. This is a color graphic. Reproduction in grayscale may misrepresent the data.



www.edrdpc.com



North Ridge Wind Farm

Towns of Hopkinton and Parishville, St. Lawrence County, New York

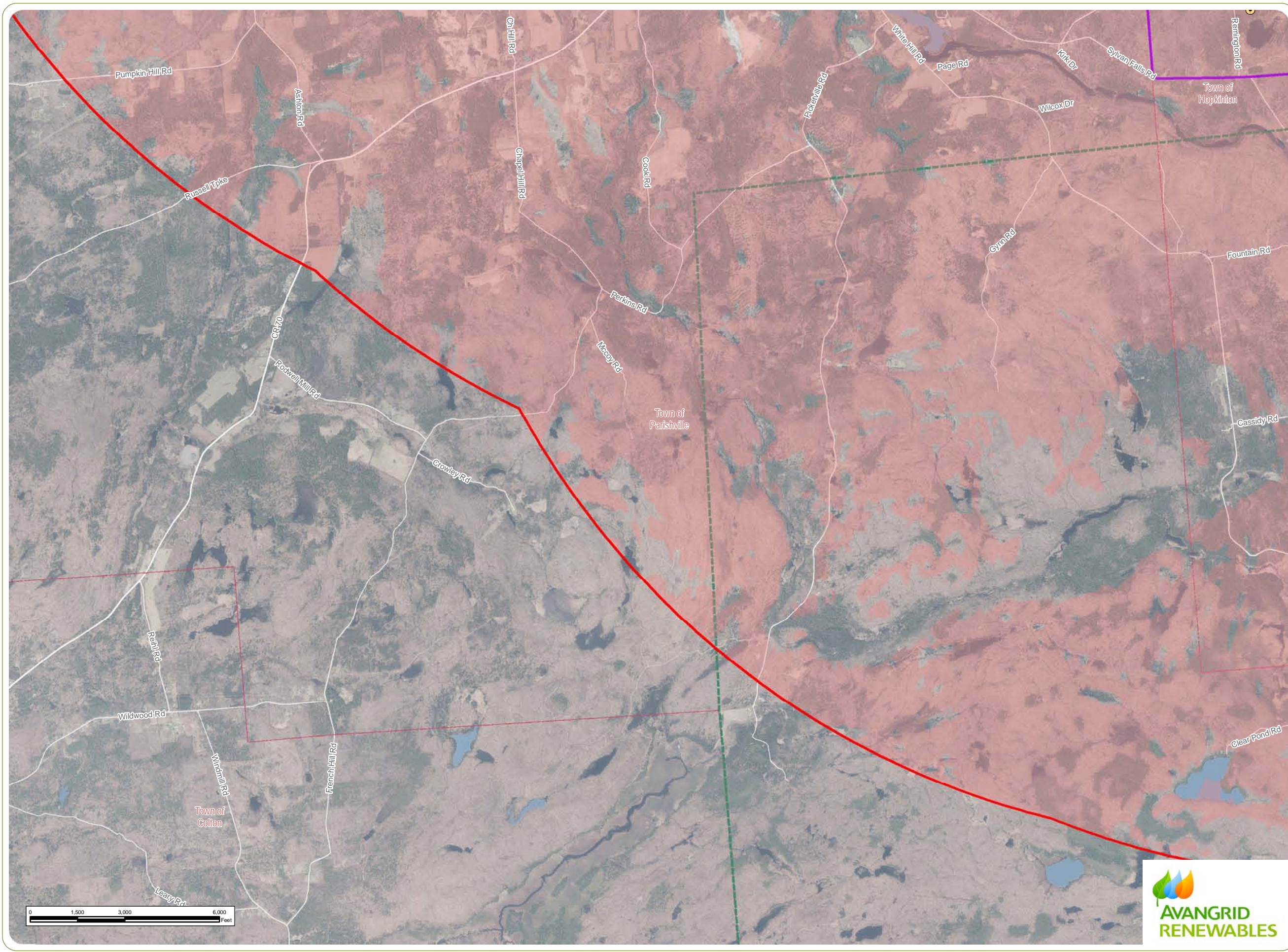
Figure 7:
Existing Conditions
Sheet 5 of 10

- Wind Turbine
- NRHP-Listed Resource (District)
- NRHP-Eligible Resource
- NRHP Eligibility Undetermined
- Resource Not Previously Surveyed
- NRHP-Listed Resource
- Potential Facility Visibility (Area of Potential Effect for Indirect [Visual] Effects)
- Facility Area
- 5-Mile Study Area
- Adirondack Park Boundary
- Town Boundary

Notes:
1. Basemap: NYSDOP "2014" orthoimagery map service.
2. Potential turbine [or FAA warning light, substation, etc.] visibility based on topography only. Screening effects of buildings, trees or other factors are not accounted for.
3. This map was generated in ArcMap on April 4, 2017.
4. This is a color graphic. Reproduction in grayscale may misrepresent the data.



www.edrdpc.com



North Ridge Wind Farm

Towns of Hopkinton and Parishville, St. Lawrence County, New York

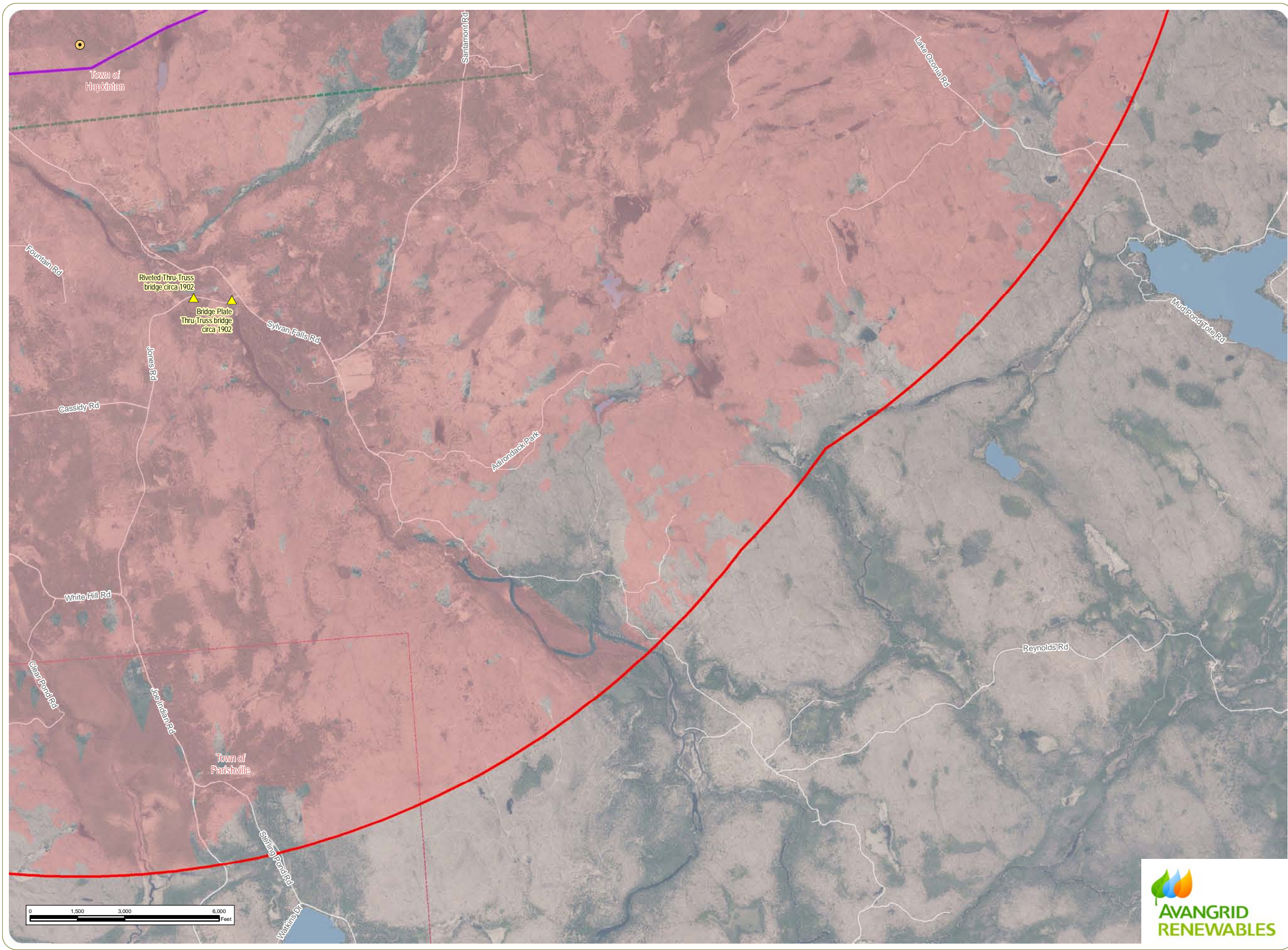
Figure 7:
Existing Conditions
Sheet 6 of 10

- Wind Turbine
- NRHP-Listed Resource (District)
- NRHP-Eligible Resource
- NRHP Eligibility Undetermined
- Resource Not Previously Surveyed
- NRHP-Listed Resource
- Potential Facility Visibility (Area of Potential Effect for Indirect [Visual] Effects)
- Facility Area
- 5-Mile Study Area
- Adirondack Park Boundary
- Town Boundary

Notes:
1. Basemap: NYSDOP "2014" orthoimagery map service.
2. Potential turbine [or FAA warning light, substation, etc.] visibility based on topography only. Screening effects of buildings, trees or other factors are not accounted for.
3. This map was generated in ArcMap on April 4, 2017.
4. This is a color graphic. Reproduction in grayscale may misrepresent the data.



www.edrdpc.com



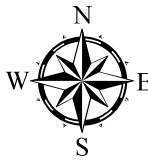
North Ridge Wind Farm

Towns of Hopkinton and Parishville, St. Lawrence County, New York

Figure 7:
Existing Conditions
Sheet 7 of 10

- Wind Turbine
- NRHP-Listed Resource (District)
- NRHP-Eligible Resource
- NRHP Eligibility Undetermined
- Resource Not Previously Surveyed
- NRHP-Listed Resource
- Potential Facility Visibility (Area of Potential Effect for Indirect [Visual] Effects)
- Facility Area
- 5-Mile Study Area
- Adirondack Park Boundary
- Town Boundary

Notes:
1. Basemap: NYSDOP "2014" orthoimagery map service.
2. Potential turbine [or FAA warning light, substation, etc.] visibility based on topography only. Screening effects of buildings, trees or other factors are not accounted for.
3. This map was generated in ArcMap on April 4, 2017.
4. This is a color graphic. Reproduction in grayscale may misrepresent the data.



www.edrdpc.com