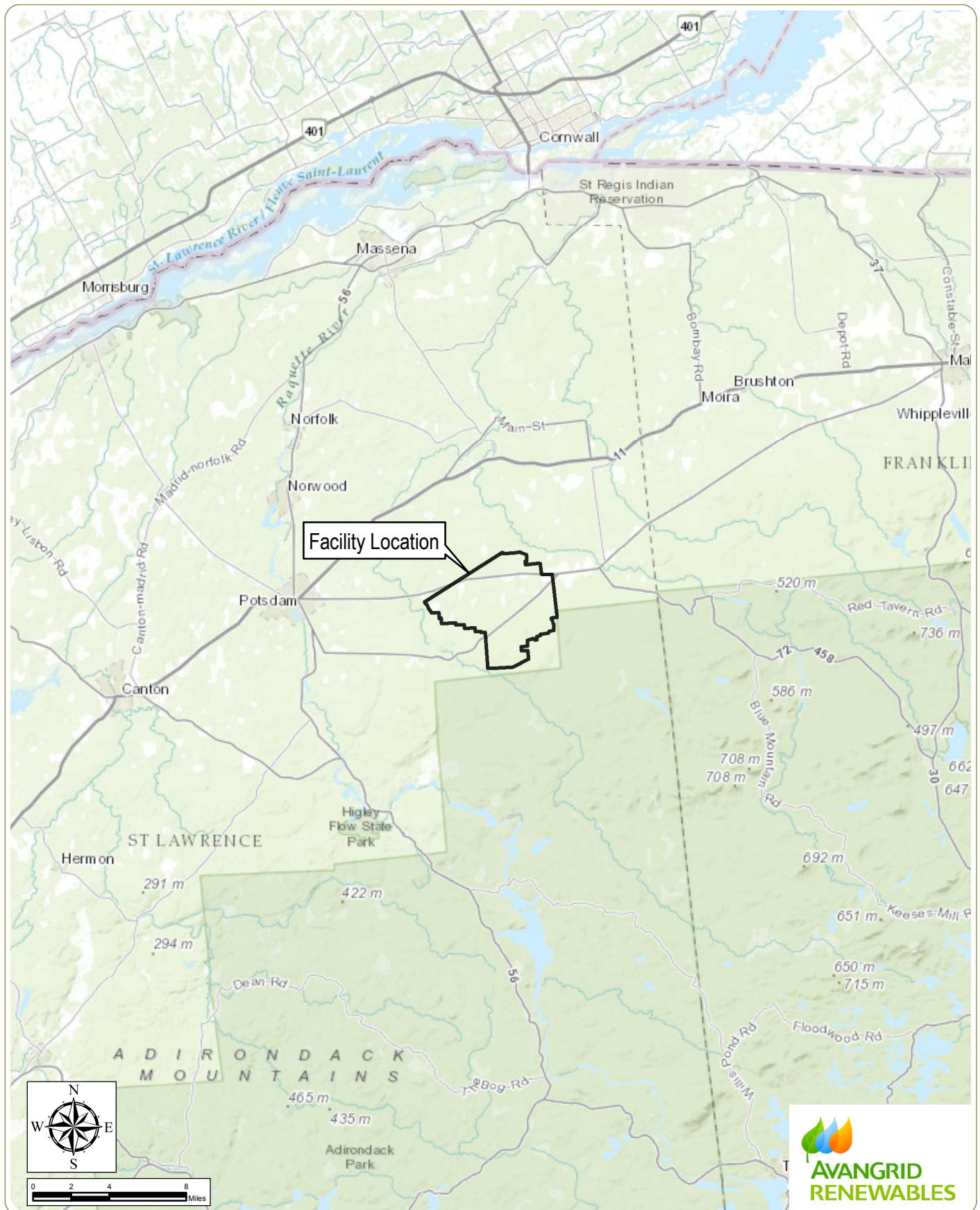


Figures

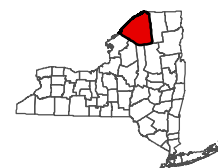


North Ridge Wind Farm

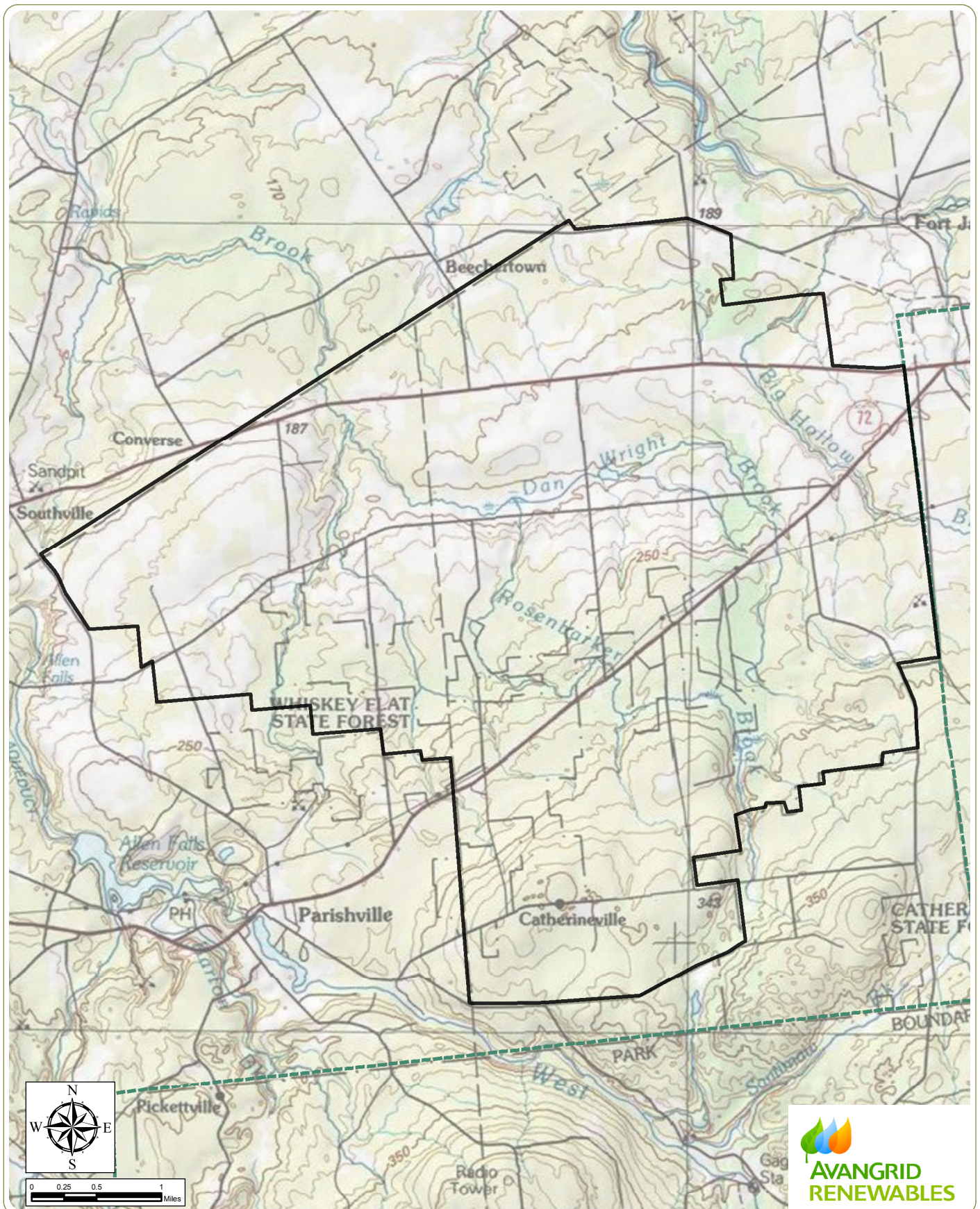
Towns of Hopkinton and Parishville,
St. Lawrence County, New York

Figure 1: Regional Facility Location

- Notes:**
1. Basemap: ESRI ArcGIS Online "World Topographic Map" map service.
 2. This map was generated in ArcMap on March 20, 2017.
 3. This is a color graphic. Reproduction in grayscale may misrepresent the data.



www.edrdpc.com





North Ridge Wind Farm

Towns of Hopkinton and Parishville,
St. Lawrence County, New York

Figure 2: Facility Topography

- Notes:**
1. Basemap: ESRI ArcGIS Online "USA Topo Maps" map service.
 2. This map was generated in ArcMap on March 20, 2017.
 3. This is a color graphic. Reproduction in grayscale may misrepresent the data.

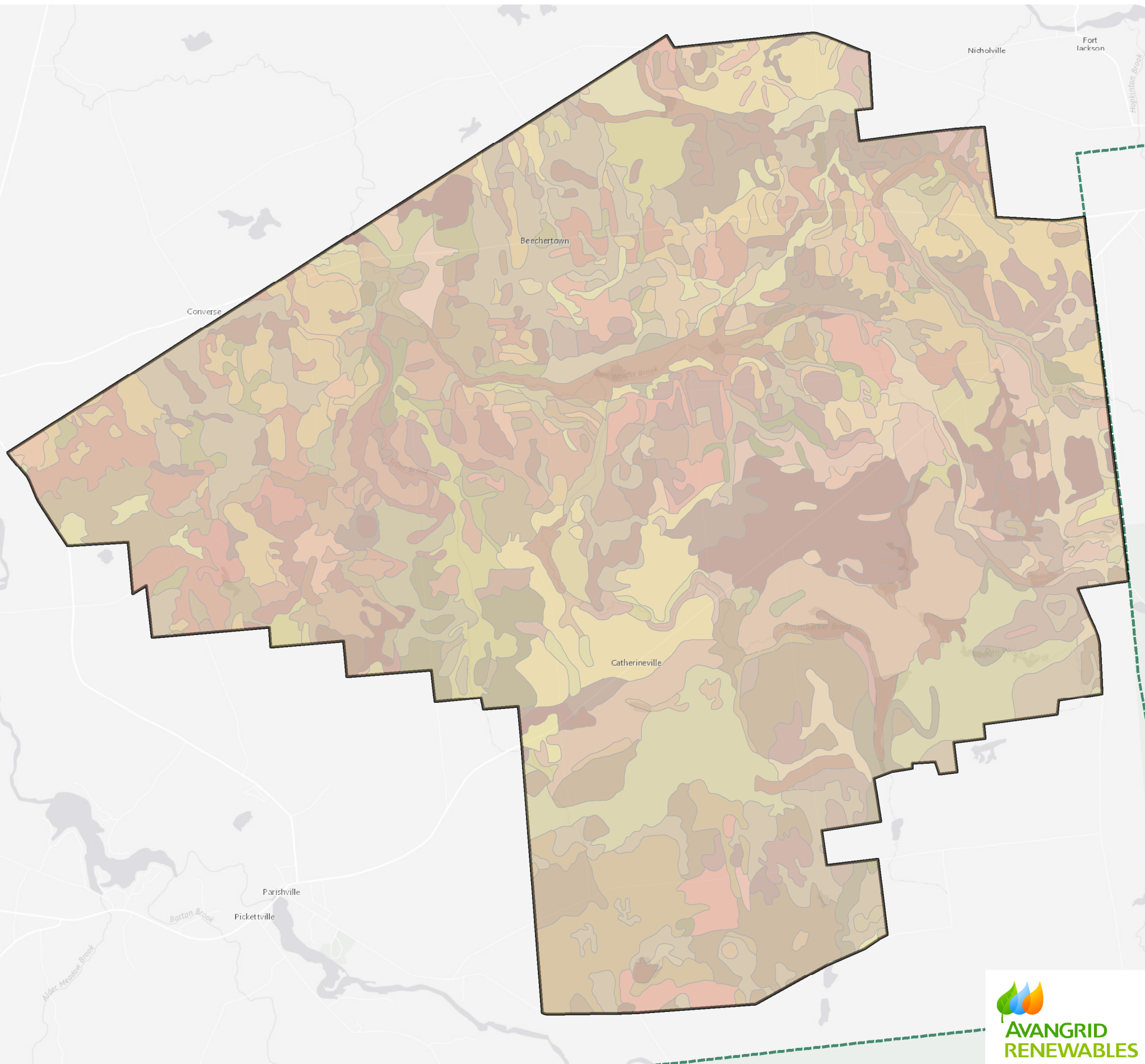
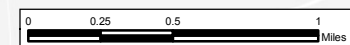
-  Archaeological Study Area
-  Adirondack Park Boundary



www.edrdpc.com

Soil Units

- Adams loamy fine sand, 2 to 8 percent slopes
- Adams loamy fine sand, 8 to 15 percent slopes
- Adams sand, 15 to 35 percent slopes
- Adams sand, 2 to 8 percent slopes
- Adams sand, rolling
- Berkshire and Sunapee soils, 8 to 15 percent slopes, very bouldery
- Berkshire loam, 3 to 8 percent slopes
- Berkshire-Lyme complex, rolling, very bouldery
- Borosapristis and Fluvaquents, frequently flooded
- Colton-Duxbury complex, 2 to 8 percent slopes
- Colton-Duxbury complex, rolling
- Cook loamy fine sand
- Coveytown and Cook soils, very stony
- Coveytown loamy fine sand
- Crary and Potsdam soils, 3 to 8 percent slopes, very bouldery
- Crary silt loam, 3 to 8 percent slopes
- Croghan loamy fine sand, 0 to 3 percent slopes
- Croghan loamy fine sand, 3 to 8 percent slopes
- Croghan sand, 0 to 8 percent slopes
- Dawson peat
- Deford mucky loamy fine sand
- Depeyster silt loam, 2 to 6 percent slopes
- Depeyster silt loam, rolling
- Dorval muck
- Eelweir fine sandy loam, 2 to 8 percent slopes
- Fahey loamy fine sand
- Fluvaquents-Udfluvents complex, frequently flooded
- Hailesboro silt loam, 0 to 2 percent slopes
- Hailesboro silt loam, 2 to 6 percent slopes
- Insula-Rock outcrop complex, rolling
- Kalurah and Pyrities soils, 0 to 8 percent slopes, very stony
- Kalurah fine sandy loam, 0 to 3 percent slopes
- Kalurah fine sandy loam, 3 to 8 percent slopes
- Lyme-Tughill complex, very bouldery
- Malone loam, 0 to 3 percent slopes
- Malone loam, 0 to 8 percent slopes, very stony
- Malone loam, 3 to 8 percent slopes
- Malone-Adjidaumo complex, 0 to 8 percent slopes, very stony
- Malone-Adjidaumo complex, undulating
- Munuscong mucky fine sandy loam
- Naumburg loamy fine sand
- Nicholville very fine sandy loam, 0 to 2 percent slopes
- Nicholville very fine sandy loam, 2 to 6 percent slopes
- Nicholville very fine sandy loam, rolling
- Pits, gravel and sand
- Potsdam and Berkshire soils, 15 to 35 percent slopes, very bouldery
- Potsdam and Crary soils, 8 to 15 percent slopes, very bouldery
- Potsdam very fine sandy loam, 8 to 15 percent slopes
- Potsdam-Tunbridge complex, 3 to 15 percent slopes, very bouldery
- Pyrities and Kalurah soils, 8 to 15 percent slopes, very stony
- Pyrities fine sandy loam, 15 to 25 percent slopes, very stony
- Pyrities fine sandy loam, 3 to 8 percent slopes
- Pyrities fine sandy loam, 8 to 15 percent slopes
- Raquette sandy loam, 3 to 8 percent slopes
- Roundabout silt loam, 0 to 2 percent slopes
- Roundabout silt loam, 2 to 6 percent slopes
- Runeberg loam
- Runeberg loam, very stony
- Salmon very fine sandy loam, 2 to 6 percent slopes
- Salmon very fine sandy loam, rolling
- Searsport muck
- Stockholm loamy fine sand
- Sunapee and Berkshire soils, 3 to 8 percent slopes, very bouldery
- Sunapee fine sandy loam, 3 to 8 percent slopes
- Swanton fine sandy loam
- Trout River and Fahey soils, 0 to 8 percent slopes, very stony
- Trout River loamy sand, 3 to 8 percent slopes
- Tunbridge-Lyman complex, 15 to 35 percent slopes, very rocky
- Tunbridge-Lyman-Dawson complex, rolling, very rocky
- Waddington gravelly sandy loam, 3 to 8 percent slopes
- Waddington gravelly sandy loam, rolling
- Water
- Wegatchie silt loam



North Ridge Wind Farm

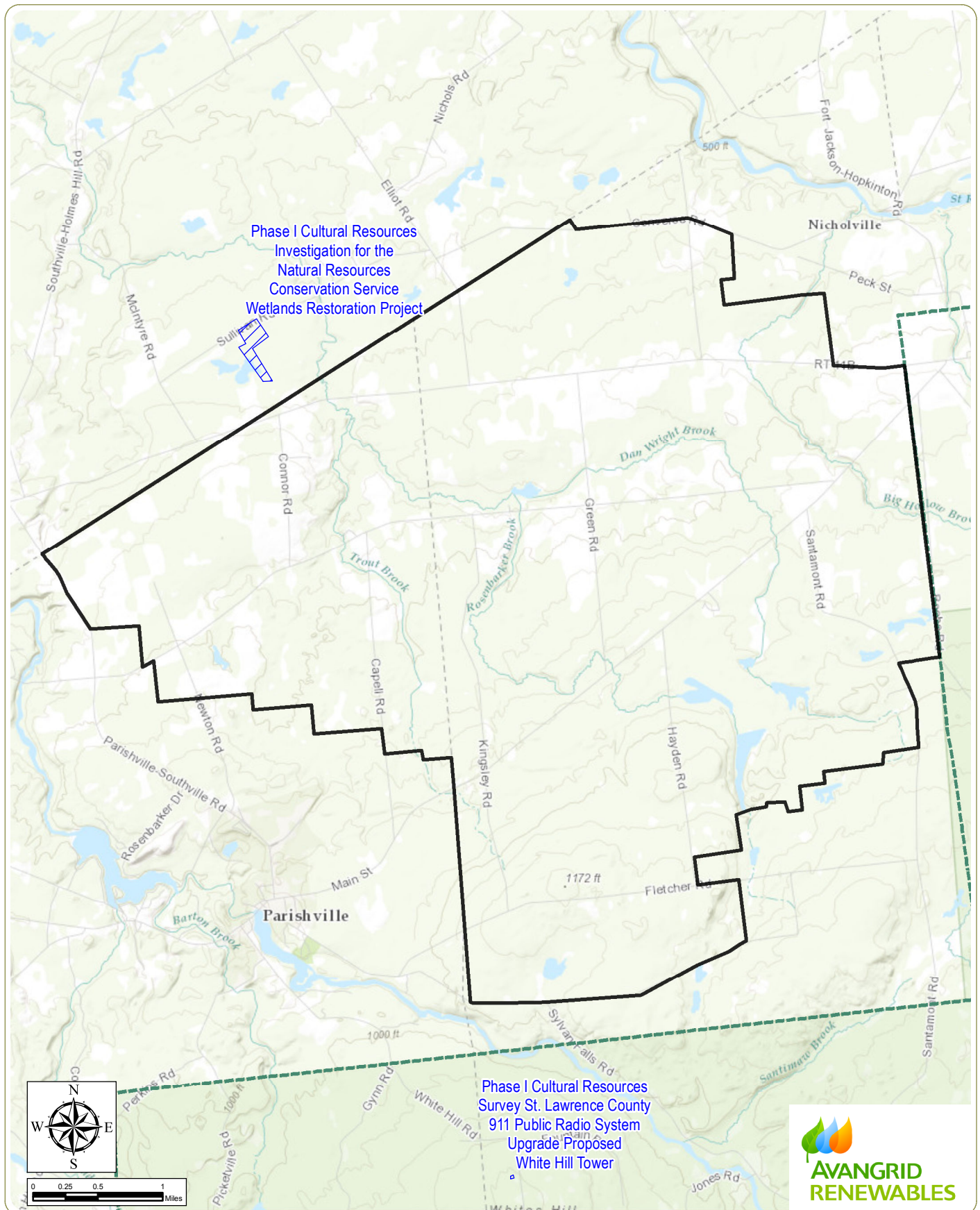
Towns of Hopkinton and Parishville, St. Lawrence County, New York

Figure 3: Facility Soils

- Archaeological Study
- Adirondack Park

Notes:
1. Basemap: ESRI ArcGIS Online "World Light Gray Canvas Base" map service.
2. This map was generated in ArcMap on March 20, 2017.
2. This is a color graphic. Reproduction in grayscale may misrepresent the data.








North Ridge Wind Farm

Towns of Hopkinton and Parishville,
St. Lawrence County, New York

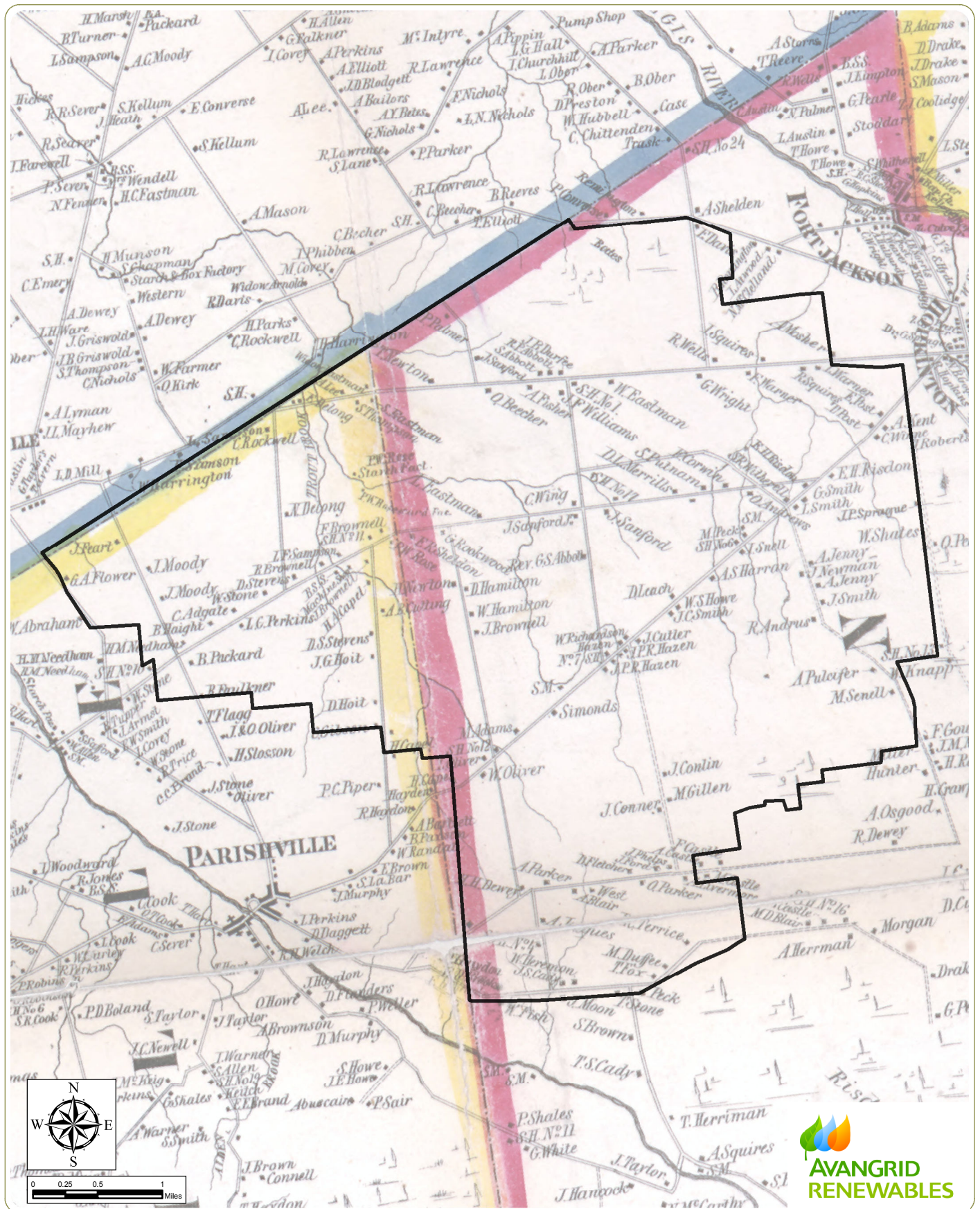
Figure 4: Previous Archaeological Surveys

- Notes:** 1. Basemap: ESRI ArcGIS Online "World Topographic Map" map service.
2. This map was generated in ArcMap on March 20, 2017.
3. This is a color graphic. Reproduction in grayscale may misrepresent the data.

-  Previous Archaeological Survey
-  Archaeological Study Area
-  Adirondack Park Boundary



www.edrdpc.com



North Ridge Wind Farm

Towns of Hopkinton and Parishville,
St. Lawrence County, New York

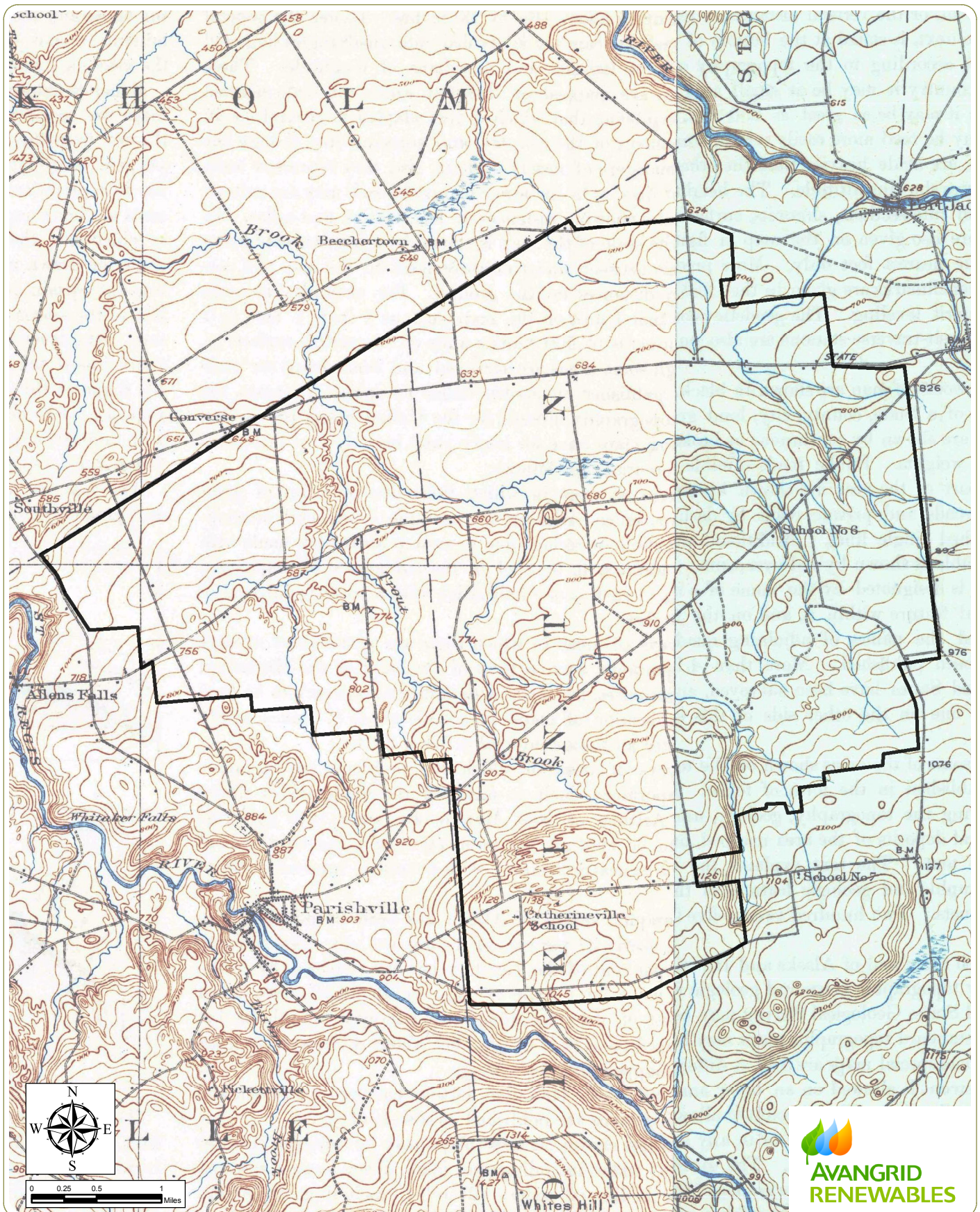
Figure 5: 1858 Rogerson Map of St. Lawrence Co., New York

 Archaeological Study Area

- Notes:** 1. Basemap: 1858 Rogerson Map of St. Lawrence Co., New York.
2. This map was generated in ArcMap on March 20, 2017.
3. This is a color graphic. Reproduction in grayscale may misrepresent the data.



www.edrpsc.com



North Ridge Wind Farm

Towns of Hopkinton and Parishville,
St. Lawrence County, New York

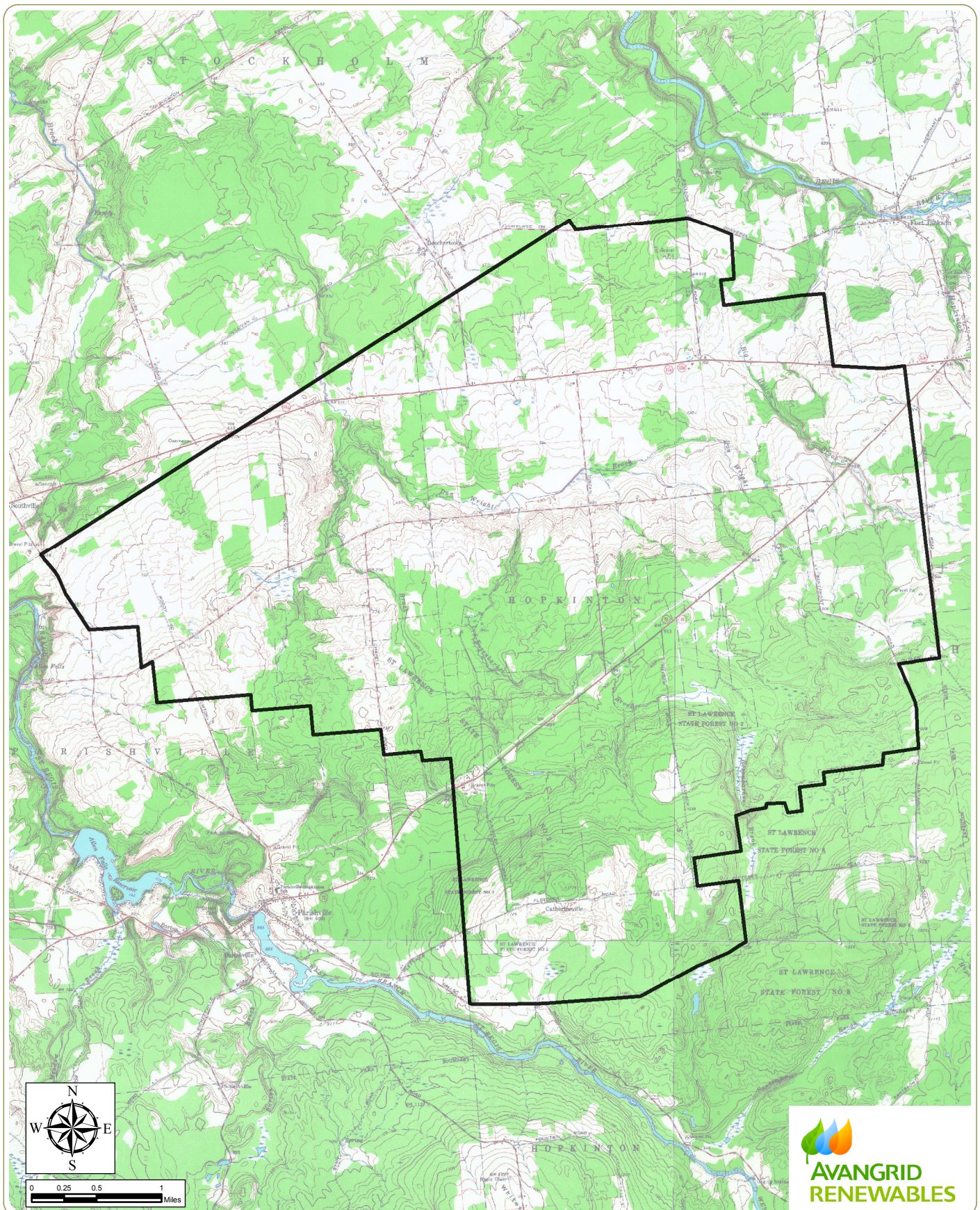
**Figure 6: 1908 Potsdam, NY and 1921 Nicholville, NY
1:62500 topographic quadrangles.**

- Notes: 1. Basemap: 1908 Potsdam, NY and 1921 Nicholville, NY 1:62500 topographic quadrangles.
2. This map was generated in ArcMap on March 20, 2017.
3. This is a color graphic. Reproduction in grayscale may misrepresent the data.

 Archaeological Study Area



www.edrdpc.com



North Ridge Wind Farm

Towns of Hopkinton and Parishville,
St. Lawrence County, New York

**Figure 7: 1964 USGS Nicholville, NY, Parishville, NY, Rainbow Falls, NY,
and Sylvan Falls, NY 1:24000 topographic quadrangles.**

 Archaeological Study Area

Notes: 1. Basemap: 1964 USGS Nicholville, NY, Parishville, NY, Rainbow Falls, NY, and Sylvan Falls, NY 1:24000 topographic quadrangles.

2. This map was generated in ArcMap on March 20, 2017.

3. This is a color graphic. Reproduction in grayscale may misrepresent the data.

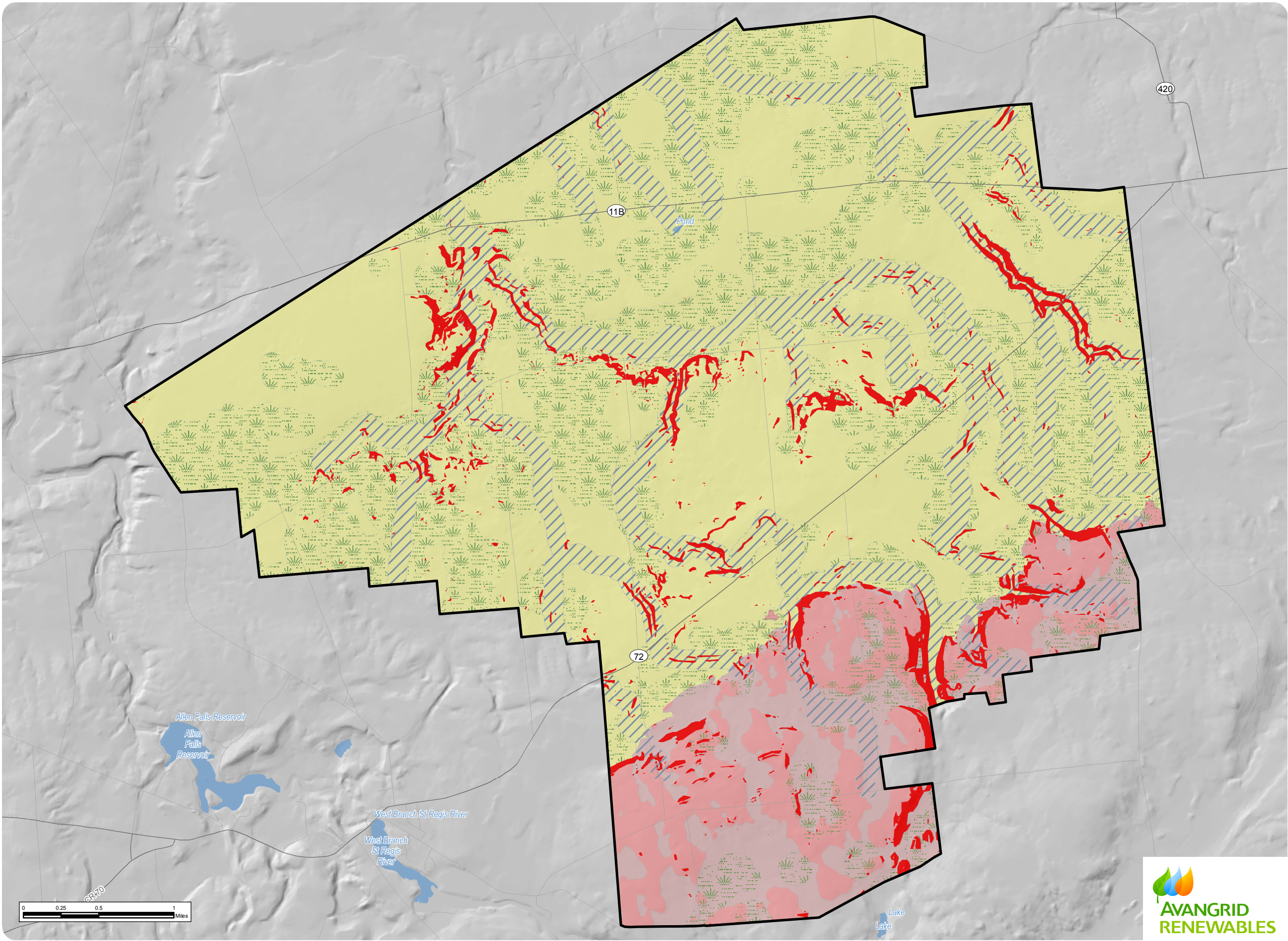


www.edrpsc.com

North Ridge Wind Farm

Towns of Hopkinton and Pottsville, St. Lawrence County, New York

Figure 8: Archaeological Survey Landscape Model



Landscape Classification

- Upland Ridge/Knoll, Near Stream
- Upland Ridge/Knoll, Near Wetland/Hydric Soil
- Upland Ridge/Knoll, No Water
- Upland Saddle, Near Stream
- Upland Saddle, Near Wetland/Hydric Soil
- Upland Saddle, No Water
- Valley Wall, Near Stream
- Valley Wall, Near Wetland/Hydric Soil
- Valley Wall, No Water
- Steep Slope
- Archaeological Study Area

Notes:
1. Basemap: Hillshade derived from USGS 10-meter resolution digital elevation model.
2. This map was generated in ArcMap on March 20, 2017.
3. This is a color graphic. Reproduction in grayscale may misrepresent the data.



www.edrpc.com

Appendix A:

Photographs



Photo 1

Typical hayfield within the Facility Site located adjacent to Route 11B, view to the southwest.



Photo 2

Typical hayfield (right) and cornfield (left) within the Facility Site located adjacent to Route 11B, view to the east.

North Ridge Wind Farm

Towns of Hopkinton and Parishville - St. Lawrence County, New York

Appendix A: Photographs

Sheet 1 of 4



Photo 3

Typical cornfield within the Facility Site located adjacent to Route 11B, view to the northeast.



Photo 4

Typical cornfield within the Facility Site along the north side of State Route 72 in the Town of Hopkinton, view to the east.

North Ridge Wind Farm

Towns of Hopkinton and Parishville - St. Lawrence County, New York

Appendix A: Photographs

Sheet 2 of 4



Photo 5

Second growth forest and successional vegetation with a woods road within the Facility Site west of Santamont Road in the Town of Hopkinton, view to the west.



Photo 6

Successional old field surrounded by second growth forest within the Facility Site at the dead end of Moody Road in the Town of Parishville, view to the north.

North Ridge Wind Farm

Towns of Hopkinton and Parishville - St. Lawrence County, New York

Appendix A: Photographs

Sheet 3 of 4



Photo 7

Example of second growth forest and woods road within the Facility south of State Route 72, view to the south.



Photo 8

Big Hollow Brook flowing through second growth forest within the Facility Site, view to the southwest. Note steep slope at left of photo.

North Ridge Wind Farm

Towns of Hopkinton and Parishville - St. Lawrence County, New York

Appendix A: Photographs

Sheet 4 of 4