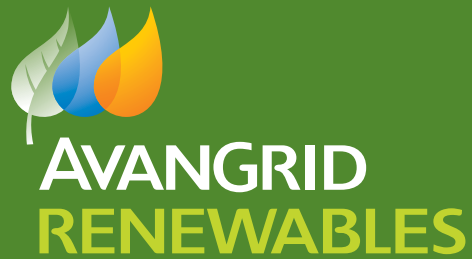


Avangrid Renewables
7650 North State Street, Suite 1
Lowville, New York 13367



PUBLIC OPEN HOUSE

NORTH RIDGE WIND FARM Early 2017

Details to follow.

Please join us at our public open house to learn more about the North Ridge Wind Farm. Attendees will be able to visit several educational stations for more information on the project, permitting and environmental study process, interconnection study process, meteorology studies, and engineering and construction. Wind energy experts will be available to answer questions.

We look forward to seeing you there!

For more information, contact 315-874-4231 or NorthRidgeWind@avangrid.com.

New Office!

Avangrid is excited to announce it will be opening a new office location in Parishville, located at 15 Mill Street. Stay tuned for regular office hours. We look forward to having you visit to learn more about the North Ridge Wind Farm and meet our team!

Visit Us Online!

Visit us at www.avangridrenewables.us/northridge for the latest information including myths and facts about wind energy, project fact sheets, the environmental study process and more.



Working Together

For a Clean Energy Future

Harnessing renewable energy resources like wind can lead to a better and cleaner future for all communities, as wind turbines create virtually no air pollution, no water pollution or hazardous emissions and consume no water. Notably, homegrown energy creates local jobs and energy independence, and helps supports a strong manufacturing base in the U.S.

Our projects have brought real economic benefits for local business owners, schools and communities as a whole. We are proud to be a part of the communities where we live and work and are excited to work together with the North Country community on the proposed North Ridge Wind Farm to create lasting economic opportunities for the area.

Avangrid Renewables is part of the Iberdrola Group, an energy pioneer with the largest renewable asset base of any company in the world.

- **We own and operate** nearly 60 renewable energy projects, with more than 3,000 operating turbines, in dozens of communities from coast to coast.
- **We have been active** in New York since 2006 and either co-own or operate nearly 400 megawatts (MW) of clean energy, which is sufficient to power tens of thousands of homes each year.
- **We own and operate** the 321 MW Maple Ridge Wind Farm located in the towns of Lowville, Harrisburg and Martinsburg with our partner, EDP Renewables.
- **We also developed** and fully permitted the Roaring Brook Wind Farm located adjacent to Maple Ridge in the town of Martinsburg.



EXPECTED LOCAL ECONOMIC BENEFITS



125 Construction jobs, and opportunities for local construction and construction supply vendors



6 Permanent, full-time jobs



Up to \$500,000 annually in direct lease, easement and neighbor agreement payments to landowners (\$15 million over 30 years)



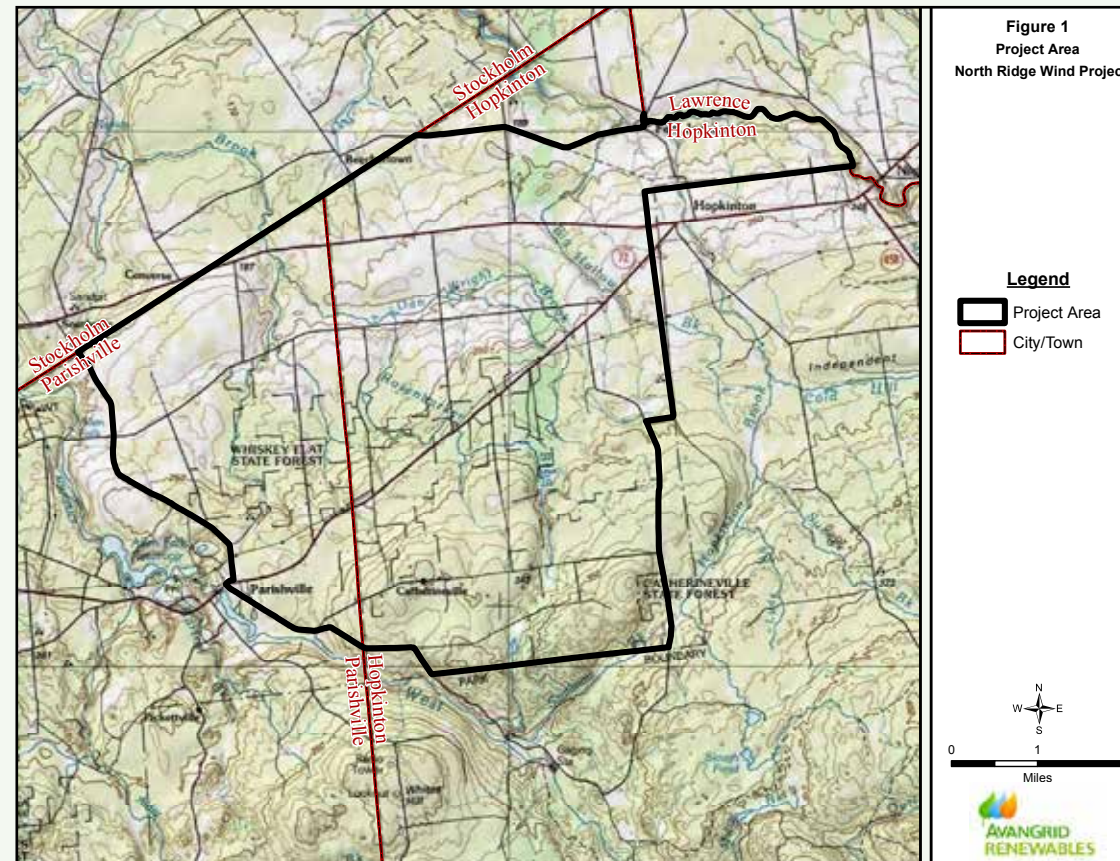
Up to \$750,000 annually in increased revenues to county and local municipal tax bases to help defray costs for schools, public safety and county services (\$23 million over 30 years)



\$3 million estimated project spending on local goods and services during development and construction

North Ridge Wind Farm – Project Overview

Avangrid is in the early stages of developing the North Ridge Wind Farm. The proposed turbine array and electrical interconnect to the energy grid would be located in St. Lawrence County. We are working closely with local community members, government officials and other stakeholders to ensure a transparent and thorough process.



BENEFITS FOR THE WHOLE COMMUNITY



“Wind projects bring so many benefits to the area, including job creation and an economic boost for local businesses. For landowners, it’s a great way to supplement incomes and may provide new opportunities to hold on to family farms and keep them rolling. I look at the wind turbines now and they’re one of the prettiest things you see. We have to think about the next generation. Wind energy is a great thing for my grandkids because we aren’t depending on fossil fuels. It’s an energy alternative that our whole community has benefited from.”

– Bob Mullin

Owner of Mullin’s Service Station, located near the Maple Ridge Wind Farm in Lowville, New York

LOCATION: Towns of **Hopkinton** and **Parishville**.

CURRENT STATUS: The North Ridge Wind Farm is currently in what is called the **pre-application and Public Involvement Program (PIP) phase** of the state’s multi-year Article 10 process.

Article 10 is an established state permitting process for the siting of electric generating facilities. It includes local input, state oversight, and scientific research guided by numerous state and federal agencies on a variety of environmental and engineering questions.

Approx.
100
Megawatts

WIND PLANT GENERATION CAPACITY

Up to
40

NUMBER OF WIND TURBINES