



Mohawk Solar
Towns of Canajoharie and Minden,
Montgomery County, New York

Article 10 Application
Figure 4-9: Aerial Photography Overlay

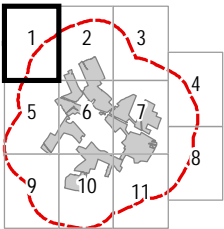
Notes: 1. Basemap: NYSDOP "2017" orthoimagery map service. 2. This map was generated in ArcMap on May 24, 2019. 3. This is a color graphic. Reproduction in grayscale may misrepresent the data.

Proposed Facility Components

- | | |
|------------------------|---|
| Transformer | Collection Substation |
| O&M Building | Laydown Area |
| Fence Line | Limit of Temporary Soil Disturbance and Vegetation Clearing |
| Buried Collection Line | Facility Site |
| Access Road | 1 Mile Facility Site Study Area |
| PV Panel Array | |
| POI Switchyard | |

Civil Boundaries

- | |
|---------------|
| Town Boundary |
|---------------|





Mohawk Solar
Towns of Canajoharie and Minden,
Montgomery County, New York

Article 10 Application
Figure 4-9: Aerial Photography Overlay

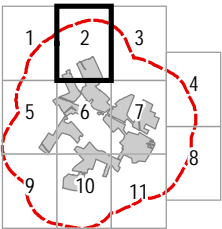
Notes: 1. Basemap: NYSDOP "2017" orthoimagery map service. 2. This map was generated in ArcMap on May 24, 2019. 3. This is a color graphic. Reproduction in grayscale may misrepresent the data.

Proposed Facility Components

- Transformer
- O&M Building
- Fence Line
- Buried Collection Line
- Access Road
- PV Panel Array
- POI Switchyard
- Collection Substation
- Laydown Area
- Limit of Temporary Soil Disturbance and Vegetation Clearing
- Facility Site
- 1 Mile Facility Site Study Area

Civil Boundaries

- City/Village Boundary
- Town Boundary





Mohawk Solar

Towns of Canajoharie and Minden,
Montgomery County, New York

Article 10 Application
Figure 4-9: Aerial Photography Overlay

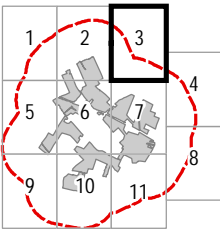
Notes: 1. Basemap: NYSDOP "2017" orthoimagery map service. 2. This map was generated in ArcMap on May 24, 2019. 3. This is a color graphic. Reproduction in grayscale may misrepresent the data.

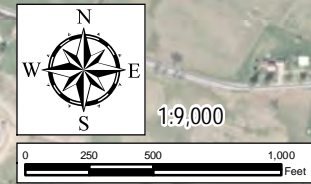
Proposed Facility Components

- Transformer
- O&M Building
- Fence Line
- Buried Collection Line
- Access Road
- PV Panel Array
- POI Switchyard
- Collection Substation
- Laydown Area
- Limit of Temporary Soil Disturbance and Vegetation Clearing
- Facility Site
- 1 Mile Facility Site Study Area

Civil Boundaries

- City/Village Boundary
- Town Boundary





Mohawk Solar
Towns of Canajoharie and Minden,
Montgomery County, New York

Article 10 Application
Figure 4-9: Aerial Photography Overlay

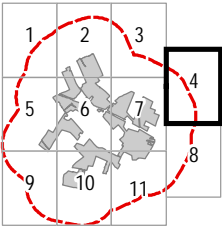
Notes: 1. Basemap: NYSDOP "2017" orthoimagery map service. 2. This map was generated in ArcMap on May 24, 2019. 3. This is a color graphic. Reproduction in grayscale may misrepresent the data.

Proposed Facility Components

- Transformer
- O&M Building
- Fence Line
- Buried Collection Line
- Access Road
- PV Panel Array
- POI Switchyard
- Collection Substation
- Laydown Area
- Limit of Temporary Soil Disturbance and Vegetation Clearing
- Facility Site
- 1 Mile Facility Site Study Area

Civil Boundaries

- City/Village Boundary
- Town Boundary





Mohawk Solar

Towns of Canajoharie and Minden,
Montgomery County, New York

Article 10 Application
Figure 4-9: Aerial Photography Overlay

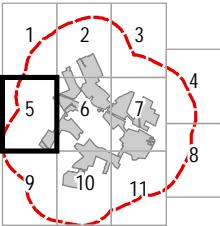
Notes: 1. Basemap: NYSDOP "2017" orthoimagery map service. 2. This map was generated in ArcMap on May 24, 2019. 3. This is a color graphic. Reproduction in grayscale may misrepresent the data.

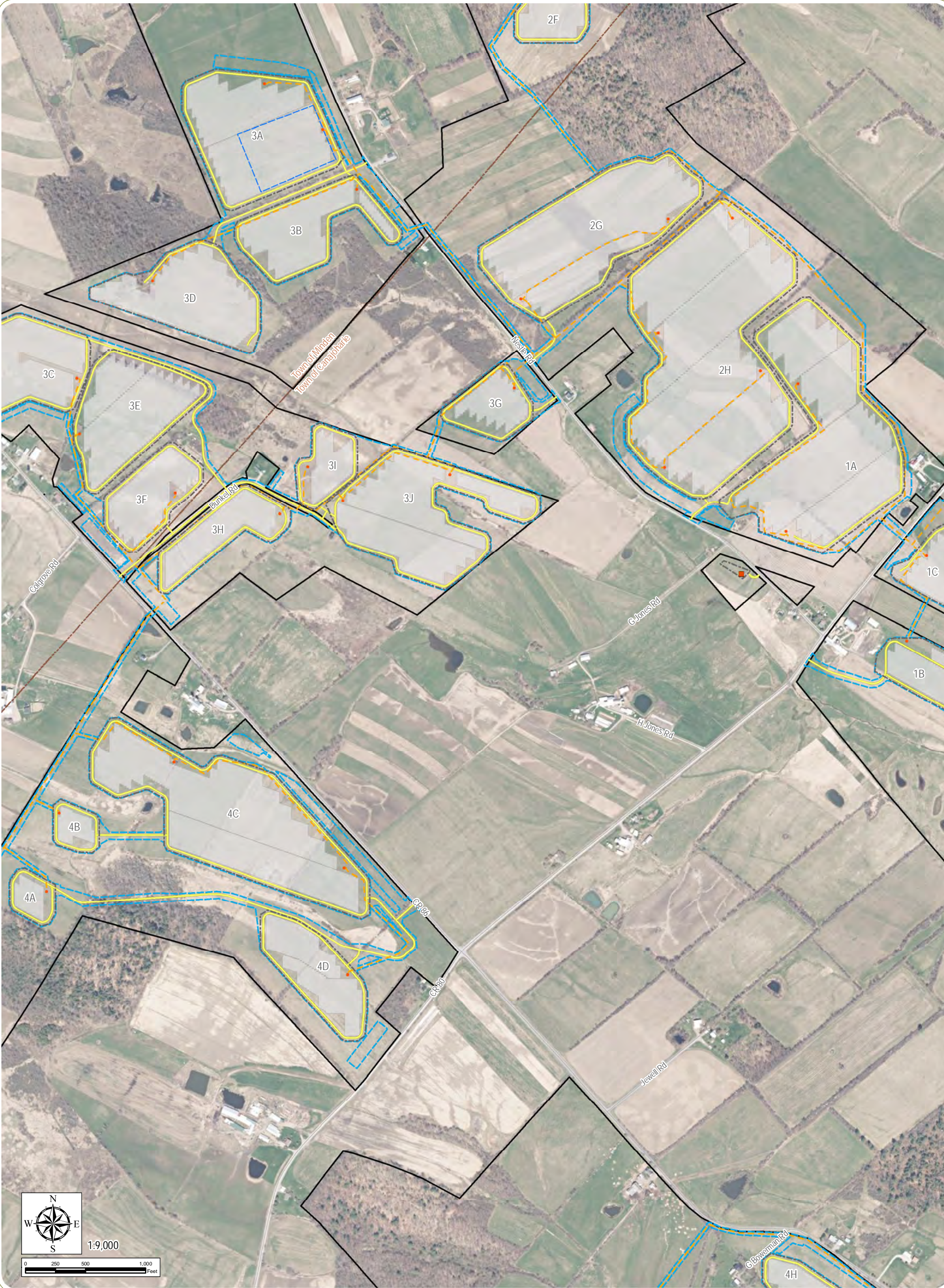
Proposed Facility Components

- | | |
|------------------------|---|
| Transformer | Collection Substation |
| O&M Building | Laydown Area |
| Fence Line | Limit of Temporary Soil Disturbance and Vegetation Clearing |
| Buried Collection Line | Facility Site |
| Access Road | 1 Mile Facility Site Study Area |
| PV Panel Array | |
| POI Switchyard | |

Civil Boundaries

- | |
|---------------|
| Town Boundary |
|---------------|





Mohawk Solar
Towns of Canajoharie and Minden,
Montgomery County, New York

Article 10 Application
Figure 4-9: Aerial Photography Overlay

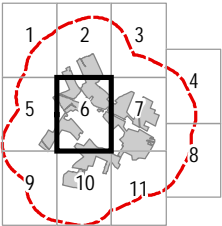
Notes: 1. Basemap: NYSDOP "2017" orthoimagery map service. 2. This map was generated in ArcMap on May 24, 2019. 3. This is a color graphic. Reproduction in grayscale may misrepresent the data.

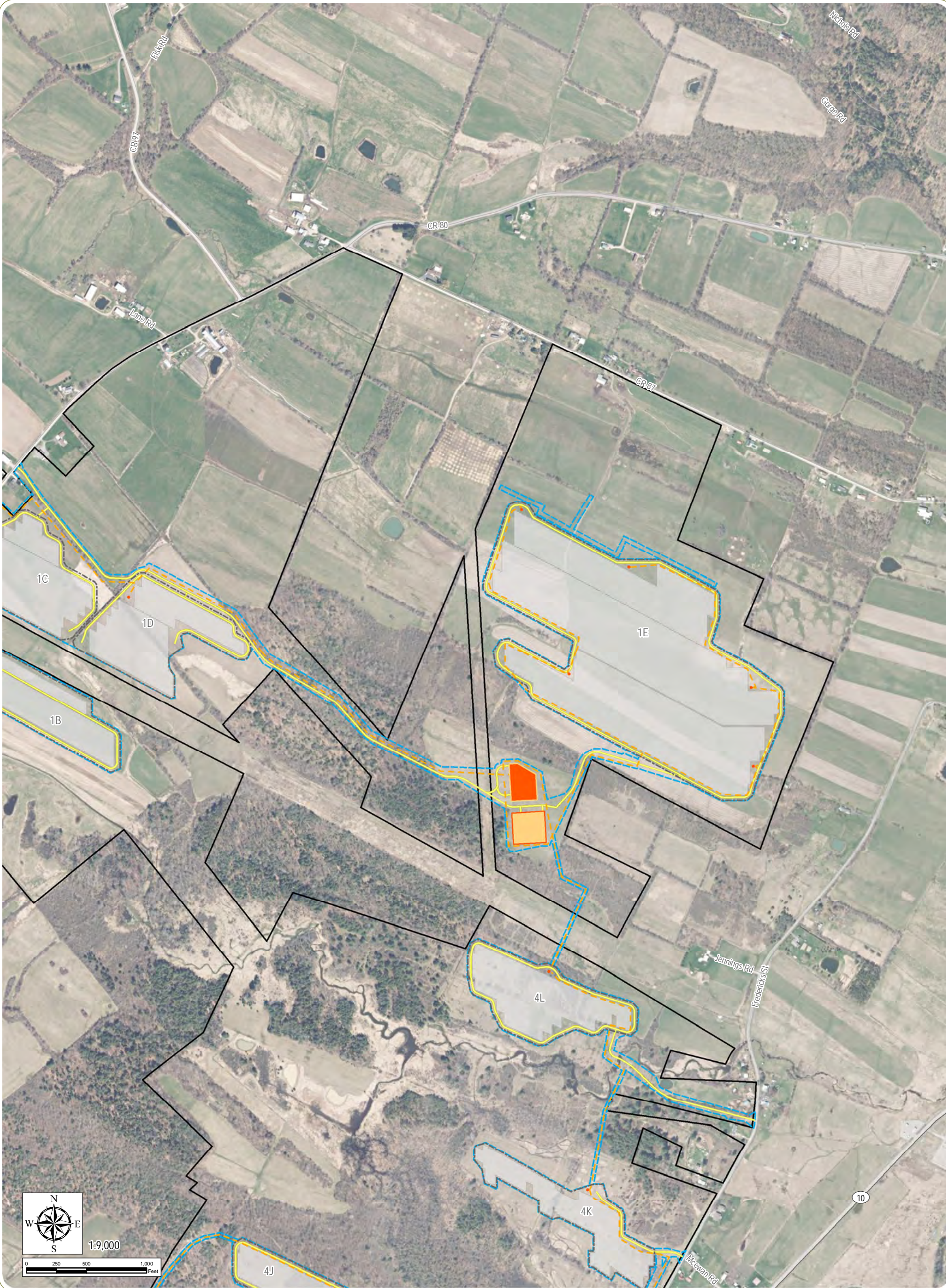
Proposed Facility Components

- | | |
|------------------------|---|
| Transformer | Collection Substation |
| O&M Building | Laydown Area |
| Fence Line | Limit of Temporary Soil Disturbance and Vegetation Clearing |
| Buried Collection Line | Access Road |
| PV Panel Array | Facility Site |
| POI Switchyard | 1 Mile Facility Site Study Area |

Civil Boundaries

- Town Boundary





Mohawk Solar
Towns of Canajoharie and Minden,
Montgomery County, New York

Article 10 Application
Figure 4-9: Aerial Photography Overlay

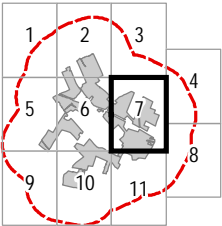
Notes: 1. Basemap: NYSDOP "2017" orthoimagery map service. 2. This map was generated in ArcMap on May 24, 2019. 3. This is a color graphic. Reproduction in grayscale may misrepresent the data.

Proposed Facility Components

- | | |
|------------------------|---|
| Transformer | Collection Substation |
| O&M Building | Laydown Area |
| Fence Line | Limit of Temporary Soil Disturbance and Vegetation Clearing |
| Buried Collection Line | Facility Site |
| Access Road | 1 Mile Facility Site Study Area |
| PV Panel Array | |
| POI Switchyard | |

Civil Boundaries

- | |
|---------------|
| Town Boundary |
|---------------|



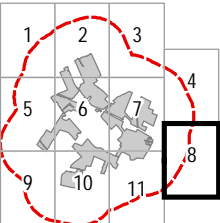


Mohawk Solar
Towns of Canajoharie and Minden,
Montgomery County, New York

Article 10 Application
Figure 4-9: Aerial Photography Overlay

Notes: 1. Basemap: NYSDOP "2017" orthoimagery map service. 2. This map was generated in ArcMap on May 24, 2019. 3. This is a color graphic. Reproduction in grayscale may misrepresent the data.

Proposed Facility Components		Civil Boundaries
Transformer	Collection Substation	Town Boundary
O&M Building	Laydown Area	
Fence Line	Limit of Temporary Soil Disturbance and Vegetation Clearing	
Buried Collection Line	Facility Site	
Access Road	1 Mile Facility Site Study Area	
PV Panel Array		
POI Switchyard		





Mohawk Solar
Towns of Canajoharie and Minden,
Montgomery County, New York

Article 10 Application
Figure 4-9: Aerial Photography Overlay

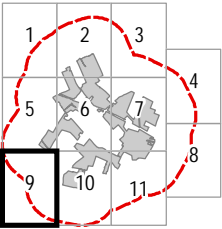
Notes: 1. Basemap: NYSDOP "2017" orthoimagery map service. 2. This map was generated in ArcMap on May 24, 2019. 3. This is a color graphic. Reproduction in grayscale may misrepresent the data.

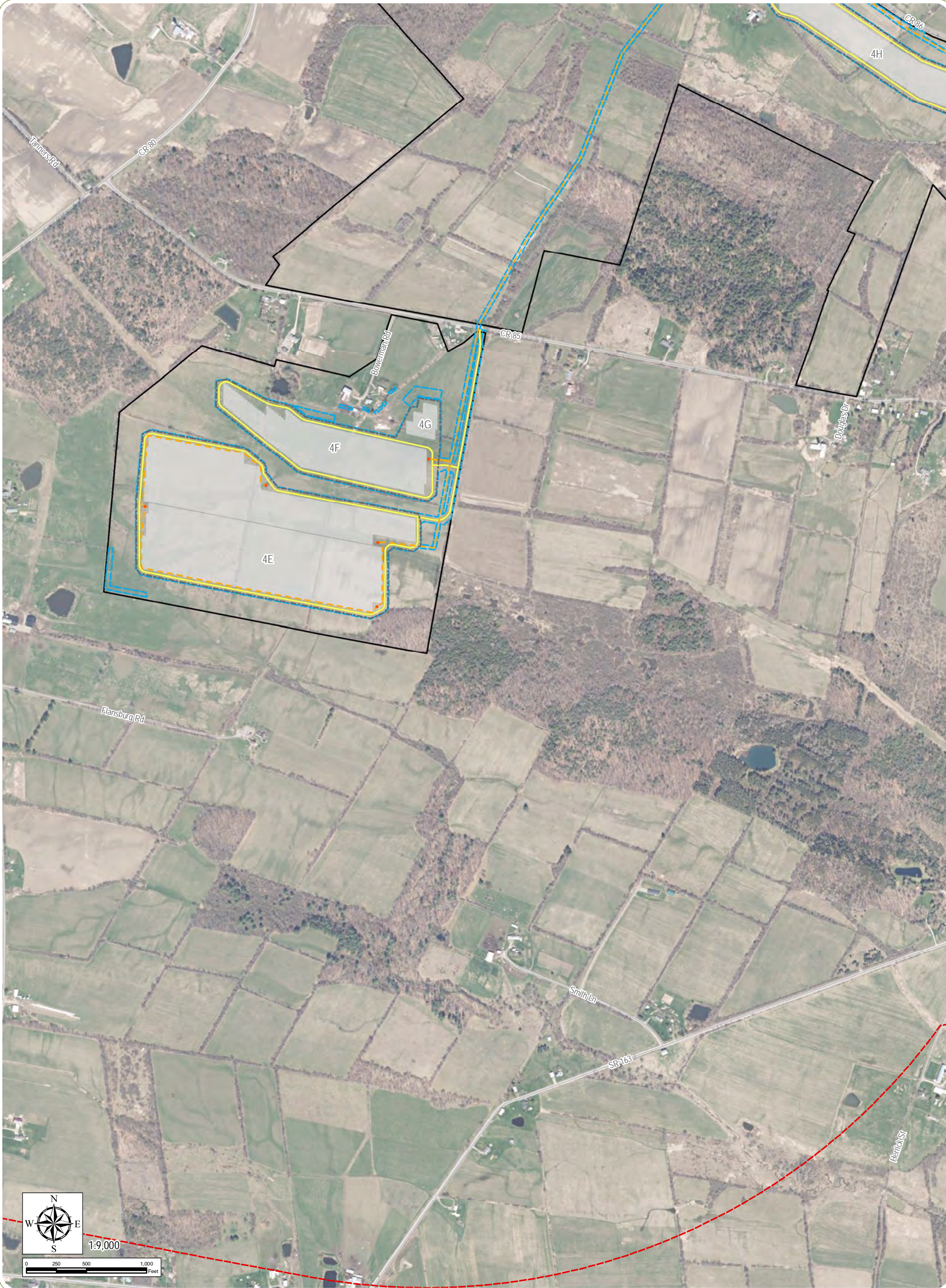
Proposed Facility Components

- | | |
|------------------------|---|
| Transformer | Collection Substation |
| O&M Building | Laydown Area |
| Fence Line | Limit of Temporary Soil Disturbance and Vegetation Clearing |
| Buried Collection Line | Facility Site |
| Access Road | 1 Mile Facility Site Study Area |
| PV Panel Array | |
| POI Switchyard | |

Civil Boundaries

- | |
|---------------|
| Town Boundary |
|---------------|





Mohawk Solar
Towns of Canajoharie and Minden,
Montgomery County, New York

Article 10 Application
Figure 4-9: Aerial Photography Overlay

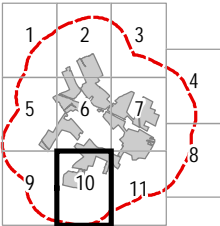
Notes: 1. Basemap: NYSDOP "2017" orthoimagery map service. 2. This map was generated in ArcMap on May 24, 2019. 3. This is a color graphic. Reproduction in grayscale may misrepresent the data.

Proposed Facility Components

- | | |
|------------------------|---|
| Transformer | Collection Substation |
| O&M Building | Laydown Area |
| Fence Line | Limit of Temporary Soil Disturbance and Vegetation Clearing |
| Buried Collection Line | Facility Site |
| Access Road | 1 Mile Facility Site Study Area |
| PV Panel Array | |
| POI Switchyard | |

Civil Boundaries

- | |
|---------------|
| Town Boundary |
|---------------|





Mohawk Solar
Towns of Canajoharie and Minden,
Montgomery County, New York

Article 10 Application
Figure 4-9: Aerial Photography Overlay

Notes: 1. Basemap: NYSDOP "2017" orthoimagery map service. 2. This map was generated in ArcMap on May 24, 2019. 3. This is a color graphic. Reproduction in grayscale may misrepresent the data.

Proposed Facility Components

- | | |
|------------------------|---|
| Transformer | Collection Substation |
| O&M Building | Laydown Area |
| Fence Line | Limit of Temporary Soil Disturbance and Vegetation Clearing |
| Buried Collection Line | Facility Site |
| Access Road | 1 Mile Facility Site Study Area |
| PV Panel Array | |
| POI Switchyard | |

Civil Boundaries

- | |
|---------------|
| Town Boundary |
|---------------|

