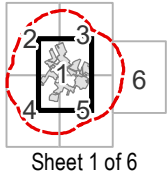


Mohawk Solar
Towns of Canajoharie and Minden,
Montgomery County, New York
[Article 10 Application](#)

Figure 4-8: Recreational Areas and Other Sensitive Land Uses

Notes: 1. Basemap: ESRI StreetMap North America, 2008. 2. This map was generated in ArcMap on May 16, 2019. 3. This is a color graphic. Reproduction in grayscale may misrepresent the data. 4. The stipulations require oil/gas wells to be shown on this map, but none are present in the study area so they are not shown.



Proposed facility Components

- PV Panel Array
- Facility Site
- 2 Mile Facility Site Study Area
- Civil Boundaries**
- County Boundary
- City/Village Boundary
- Town Boundary

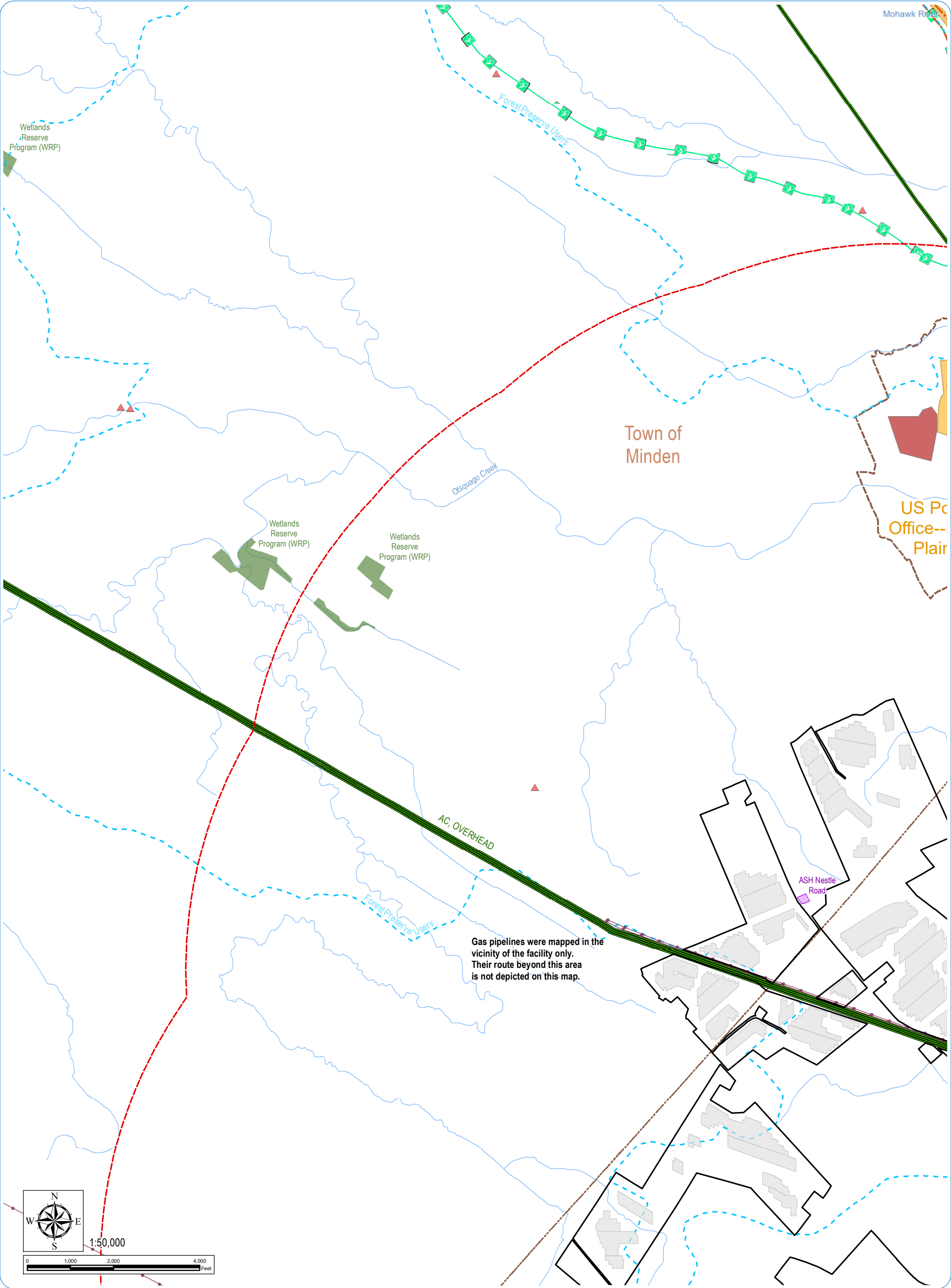
Sensitive Land Uses

- Hamlet
- NRHP-Eligible Resource
- Existing Substation
- Local Trail
- Snowmobile Trail
- NYS Trail
- Bike Route

- Scenic Byway
- Existing Transmission Line
- Natural Gas Pipelines
- NRHP-Listed Site
- School
- Amish School House
- Local Park
- State Park

- Golf Course
- NYSDEC Land
- Conservation Easement

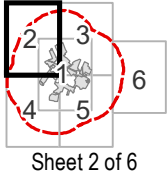




Mohawk Solar
Towns of Canajoharie and Minden,
Montgomery County, New York
[Article 10 Application](#)

Figure 4-8: Recreational Areas and Other Sensitive Land Uses

Notes: 1. Basemap: ESRI StreetMap North America, 2008. 2. This map was generated in ArcMap on May 16, 2019. 3. This is a color graphic. Reproduction in grayscale may misrepresent the data. 4. The stipulations require oil/gas wells to be shown on this map, but none are present in the study area so they are not shown.



Proposed facility Components

- PV Panel Array
- Facility Site
- 2 Mile Facility Site Study Area
- County Boundary
- City/Village Boundary
- Town Boundary

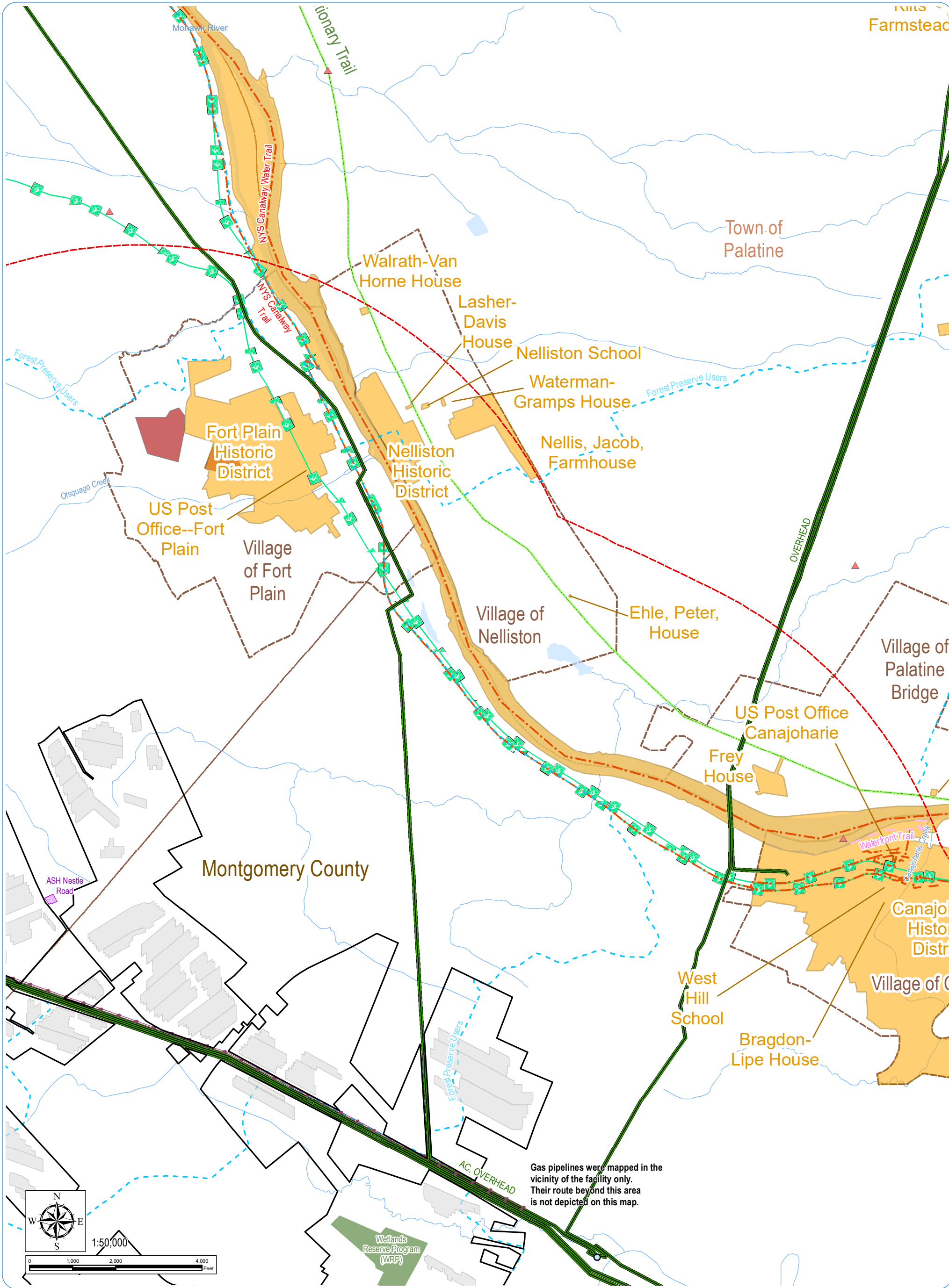
Sensitive Land Uses

- Hamlet
- NRHP-Eligible Resource
- Existing Substation
- Local Trail
- Snowmobile Trail
- NYS Trail
- Bike Route

- Scenic Byway
- Existing Transmission Line
- Natural Gas Pipelines
- NRHP-Listed Site
- School
- Amish School House
- Local Park
- State Park

- Golf Course
- NYSDEC Land
- Conservation Easement

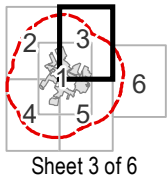




Mohawk Solar
Towns of Canajoharie and Minden,
Montgomery County, New York
[Article 10 Application](#)

Figure 4-8: Recreational Areas and Other Sensitive Land Uses

Notes: 1. Basemap: ESRI StreetMap North America, 2008. 2. This map was generated in ArcMap on May 16, 2019. 3. This is a color graphic. Reproduction in grayscale may misrepresent the data. 4. The stipulations require oil/gas wells to be shown on this map, but none are present in the study area so they are not shown.



Proposed facility Components

- PV Panel Array
- Facility Site
- 2 Mile Facility Site Study Area
- Civil Boundaries**
- County Boundary
- City/Village Boundary
- Town Boundary

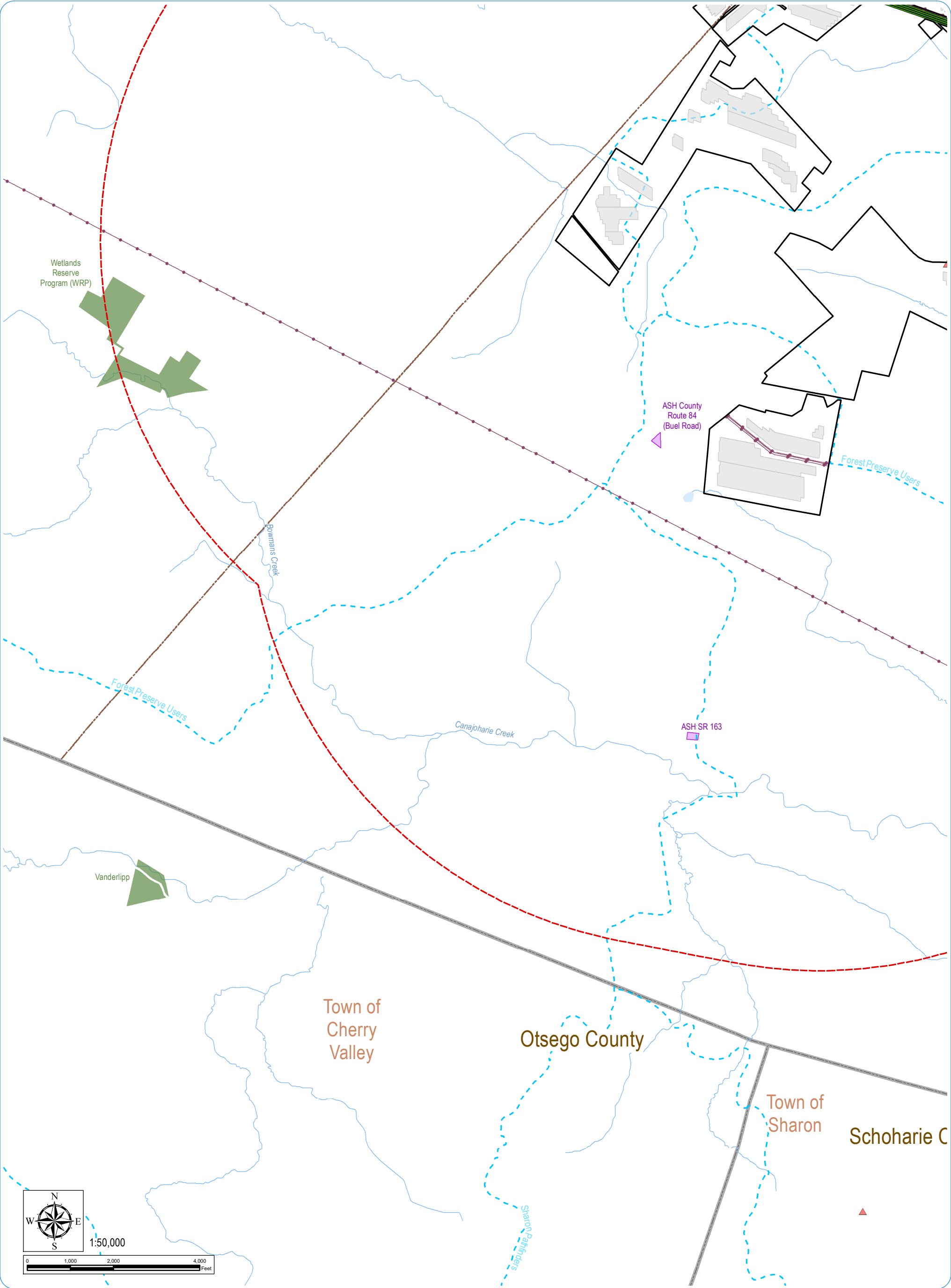
Sensitive Land Uses

- Hamlet
- NRHP-Eligible Resource
- Existing Substation
- Local Trail
- Snowmobile Trail
- NYS Trail
- Bike Route

- Scenic Byway
- Existing Transmission Line
- Natural Gas Pipelines
- NRHP-Listed Site
- School
- Amish School House
- Local Park
- State Park

- Golf Course
- NYSDEC Land
- Conservation Easement

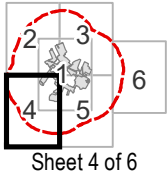




Mohawk Solar
Towns of Canajoharie and Minden,
Montgomery County, New York
[Article 10 Application](#)

Figure 4-8: Recreational Areas and Other Sensitive Land Uses

Notes: 1. Basemap: ESRI StreetMap North America, 2008. 2. This map was generated in ArcMap on May 16, 2019. 3. This is a color graphic. Reproduction in grayscale may misrepresent the data. 4. The stipulations require oil/gas wells to be shown on this map, but none are present in the study area so they are not shown.



Proposed facility Components

- PV Panel Array
 - Facility Site
 - 2 Mile Facility Site Study Area
- Civil Boundaries**
- County Boundary
 - City/Village Boundary
 - Town Boundary

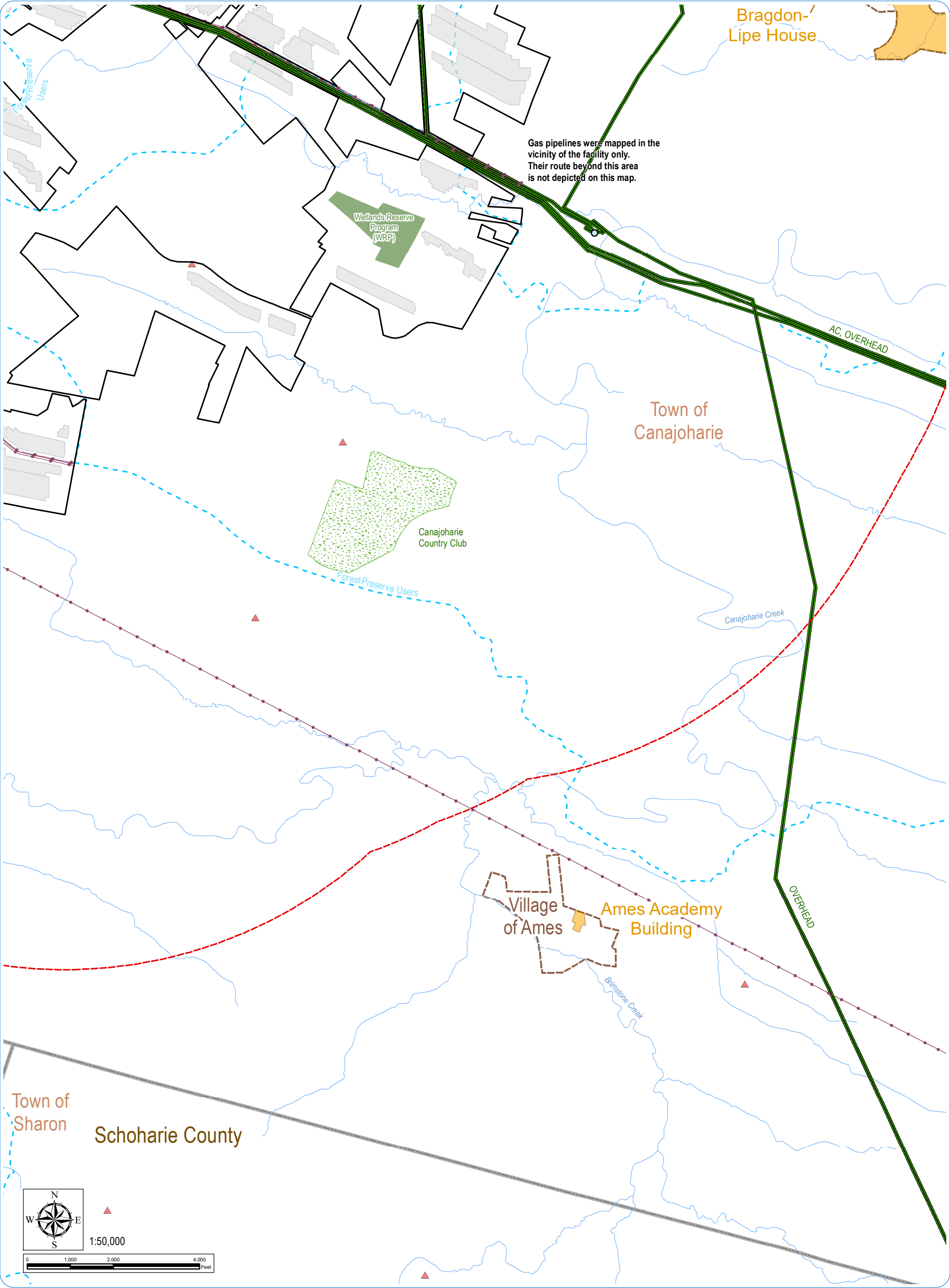
Sensitive Land Uses

- Hamlet
- NRHP-Eligible Resource
- Existing Substation
- Local Trail
- Snowmobile Trail
- NYS Trail
- Bike Route

- Scenic Byway
- Existing Transmission Line
- Natural Gas Pipelines
- NRHP-Listed Site
- School
- Amish School House
- Local Park
- State Park

- Golf Course
- NYSDEC Land
- Conservation Easement

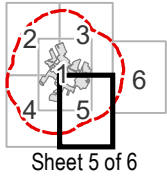




Mohawk Solar
Towns of Canajoharie and Minden,
Montgomery County, New York
[Article 10 Application](#)

Figure 4-8: Recreational Areas and Other Sensitive Land Uses

Notes: 1. Basemap: ESRI StreetMap North America, 2008. 2. This map was generated in ArcMap on May 16, 2019. 3. This is a color graphic. Reproduction in grayscale may misrepresent the data. 4. The stipulations require oil/gas wells to be shown on this map, but none are present in the study area so they are not shown.



Sheet 5 of 6

Proposed facility Components

- PV Panel Array
 - Facility Site
 - 2 Mile Facility Site Study Area
- Civil Boundaries**
- County Boundary
 - City/Village Boundary
 - Town Boundary

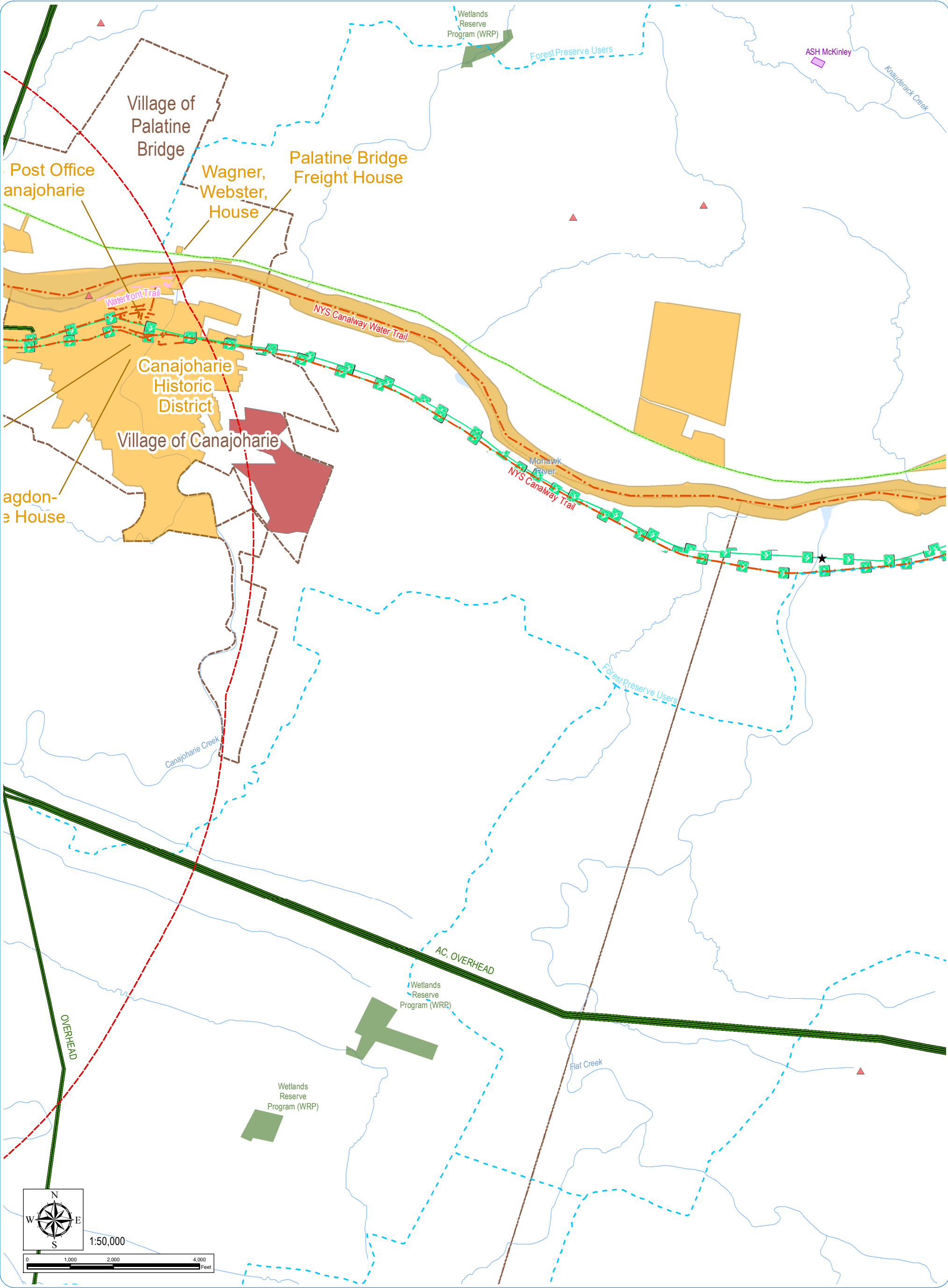
Sensitive Land Uses

- Hamlet
- NRHP-Eligible Resource
- Existing Substation
- Local Trail
- Snowmobile Trail
- NYS Trail
- Bike Route

- Scenic Byway
- Existing Transmission Line
- Natural Gas Pipelines
- NRHP-Listed Site
- School
- Amish School House
- Local Park
- State Park

- Golf Course
- NYSDEC Land
- Conservation Easement

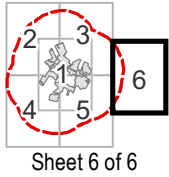




Mohawk Solar
Towns of Canajoharie and Minden,
Montgomery County, New York
[Article 10 Application](#)

Figure 4-8: Recreational Areas and Other Sensitive Land Uses

Notes: 1. Basemap: ESRI StreetMap North America, 2008. 2. This map was generated in ArcMap on May 16, 2019. 3. This is a color graphic. Reproduction in grayscale may misrepresent the data. 4. The stipulations require oil/gas wells to be shown on this map, but none are present in the study area so they are not shown.



Proposed facility Components

- PV Panel Array
- Facility Site
- 2 Mile Facility Site Study Area
- Civil Boundaries**
- County Boundary
- City/Village Boundary
- Town Boundary

Sensitive Land Uses

- Hamlet
- NRHP-Eligible Resource
- Existing Substation
- Local Trail
- Snowmobile Trail
- NYS Trail
- Bike Route

- Scenic Byway
- Existing Transmission Line
- Natural Gas Pipelines
- NRHP-Listed Site
- School
- Amish School House
- Local Park
- State Park

- Golf Course
- NYSDEC Land
- Conservation Easement

