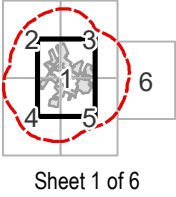




**Mohawk Solar**  
Towns of Canajoharie and Minden,  
Montgomery County, New York

Article 10 Application  
**Figure 4-7: Specially Designated Areas**



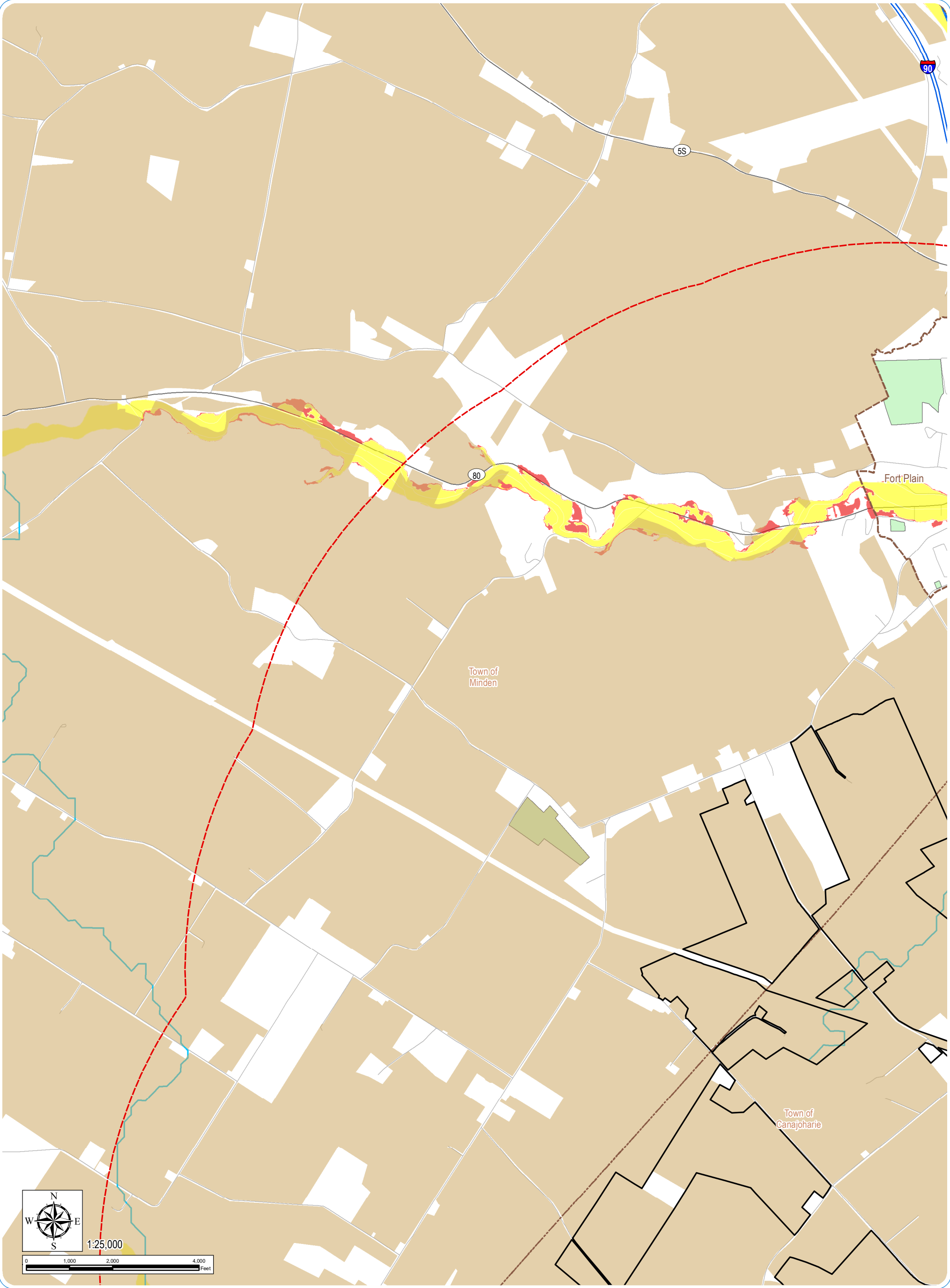
- Proposed Facility Components**
- Facility Site
  - 2 Mile Facility Site Study Area
- Agriculture**
- Agricultural District

- Specially Designated Areas**
- Designated Inland Waterway
  - National River Inventory
  - 100-Year Flood Zone
  - 500-Year Flood Zone
  - NYPAD

- Civil Boundaries**
- County Boundary
  - City/Village Boundary
  - Town Boundary

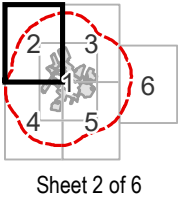


**Notes:** 1. Basemap: ESRI StreetMap North America, 2008. 2. This map was generated in ArcMap on May 23, 2019. 3. This is a color graphic. Reproduction in grayscale may misrepresent the data.



**Mohawk Solar**  
Towns of Canajoharie and Minden,  
Montgomery County, New York

[Article 10 Application](#)  
**Figure 4-7: Specially Designated Areas**



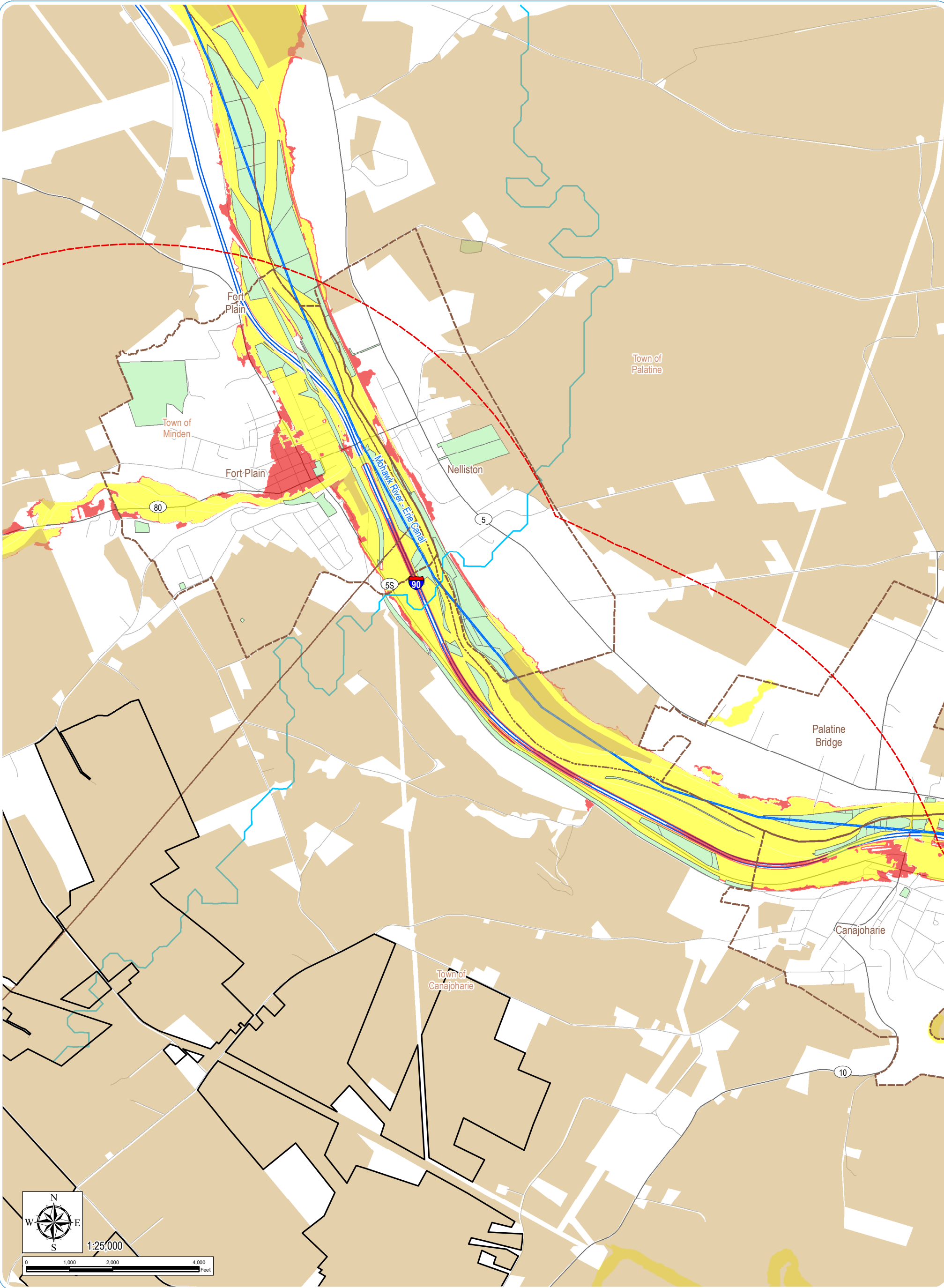
- Proposed Facility Components**
- Facility Site
  - 2 Mile Facility Site Study Area
- Agriculture**
- Agricultural District

- Specially Designated Areas**
- Designated Inland Waterway
  - National River Inventory
  - 100-Year Flood Zone
  - 500-Year Flood Zone
  - NYPAD

- Civil Boundaries**
- County Boundary
  - City/Village Boundary
  - Town Boundary



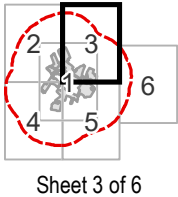
**Notes:** 1. Basemap: ESRI StreetMap North America, 2008. 2. This map was generated in ArcMap on May 23, 2019. 3. This is a color graphic. Reproduction in grayscale may misrepresent the data.



**Mohawk Solar**  
Towns of Canajoharie and Minden,  
Montgomery County, New York

[Article 10 Application](#)  
**Figure 4-7: Specially Designated Areas**

**Notes:** 1. Basemap: ESRI StreetMap North America, 2008. 2. This map was generated in ArcMap on May 23, 2019. 3. This is a color graphic. Reproduction in grayscale may misrepresent the data.



Sheet 3 of 6

**Proposed Facility Components**

- Facility Site
  - 2 Mile Facility Site Study Area
- Agriculture**
- Agricultural District

**Specially Designated Areas**

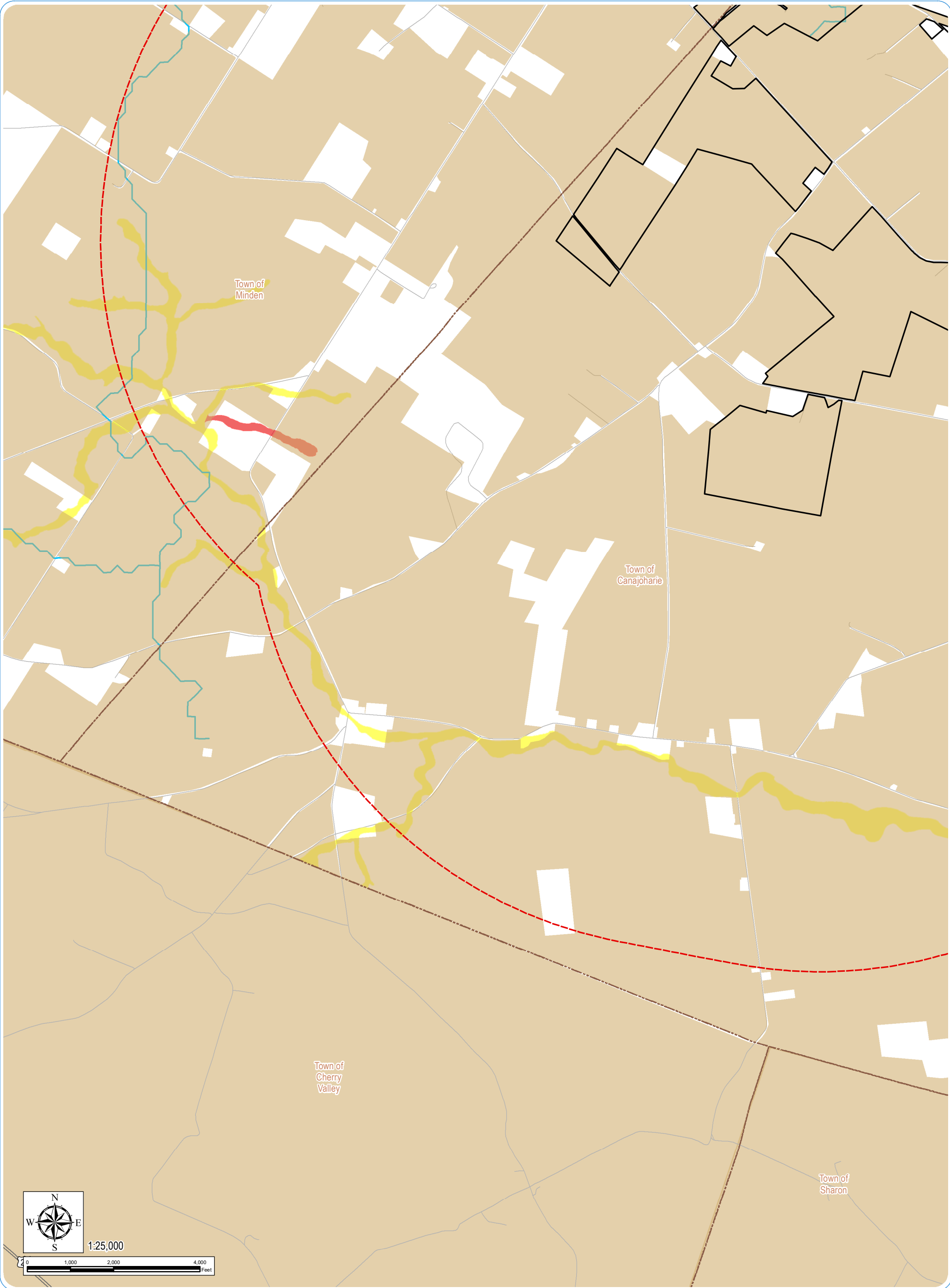
- Designated Inland Waterway
- National River Inventory
- 100-Year Flood Zone
- 500-Year Flood Zone
- NYPAD

**Civil Boundaries**

- County Boundary
- City/Village Boundary
- Town Boundary

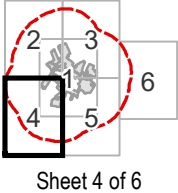






**Mohawk Solar**  
Towns of Canajoharie and Minden,  
Montgomery County, New York

[Article 10 Application](#)  
**Figure 4-7: Specially Designated Areas**



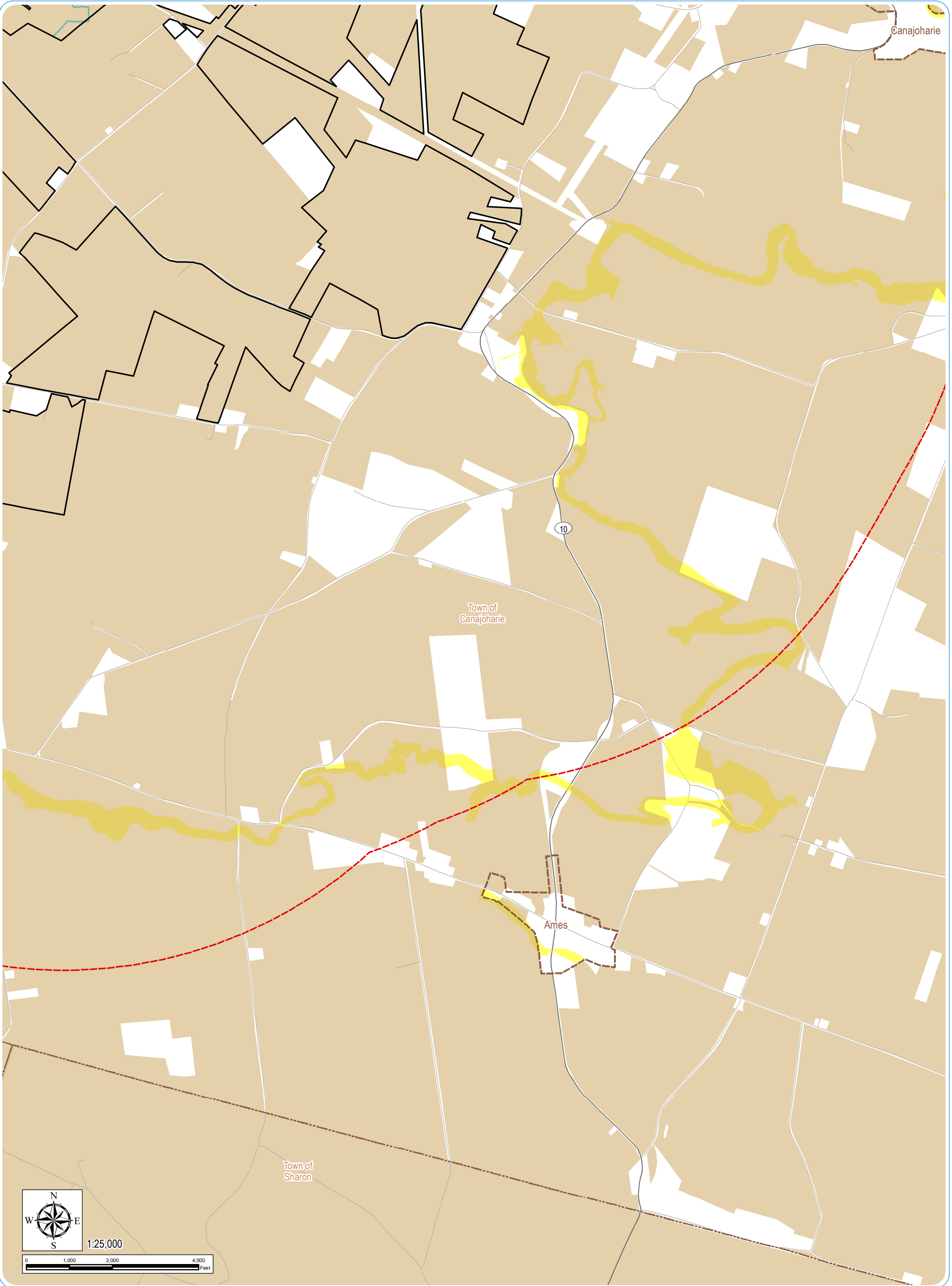
- Proposed Facility Components**
- Facility Site
  - 2 Mile Facility Site Study Area
- Agriculture**
- Agricultural District

- Specially Designated Areas**
- National River Inventory
  - 100-Year Flood Zone
  - 500-Year Flood Zone

- Civil Boundaries**
- County Boundary
  - City/Village Boundary
  - Town Boundary

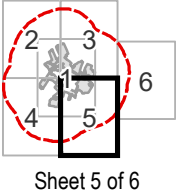


**Notes:** 1. Basemap: ESRI StreetMap North America, 2008. 2. This map was generated in ArcMap on May 23, 2019. 3. This is a color graphic. Reproduction in grayscale may misrepresent the data.



**Mohawk Solar**  
Towns of Canajoharie and Minden,  
Montgomery County, New York

[Article 10 Application](#)  
**Figure 4-7: Specially Designated Areas**



- Proposed Facility Components**
- Facility Site
  - 2 Mile Facility Site Study Area
- Agriculture**
- Agricultural District

- Specially Designated Areas**
- National River Inventory
  - 100-Year Flood Zone

- Civil Boundaries**
- County Boundary
  - City/Village Boundary
  - Town Boundary

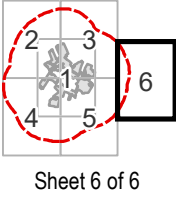


**Notes:** 1. Basemap: ESRI StreetMap North America, 2008. 2. This map was generated in ArcMap on May 23, 2019. 3. This is a color graphic. Reproduction in grayscale may misrepresent the data.



**Mohawk Solar**  
Towns of Canajoharie and Minden,  
Montgomery County, New York

Article 10 Application  
**Figure 4-7: Specially Designated Areas**



- Proposed Facility Components**
- Facility Site
  - 2 Mile Facility Site Study Area
- Agriculture**
- Agricultural District

- Specially Designated Areas**
- Designated Inland Waterway
  - 100-Year Flood Zone
  - 500-Year Flood Zone
  - NYPAD

- Civil Boundaries**
- County Boundary
  - City/Village Boundary
  - Town Boundary



**Notes:** 1. Basemap: ESRI StreetMap North America, 2008. 2. This map was generated in ArcMap on May 23, 2019. 3. This is a color graphic. Reproduction in grayscale may misrepresent the data.