



Mohawk Solar

Towns of Canajoharie and Minden,
Montgomery County, New York

[Article 10 Application](#)

Figure 4-4: Tax Parcels

Notes: 1. Basemap: USDA NAIP 2017 orthoimagery map service. 2. This map was generated in ArcMap by Environmental Design and Research on May 23, 2019. 3. This is a color graphic. Reproduction in grayscale may misrepresent the data.

Civil Boundaries

- City/Village Boundary
- Town Boundary

Proposed Facility Components

- Facility Site

Land Use

- Parcels within 2000 Feet of Facility Site
- Agricultural
- Residential
- Vacant Land

1 2 3
4 5 6 7 8 9
10 11 12 13 14 15
18 19 20 21 22
23 24 25

16 17

AVANGRID
RENEWABLES

Sheet 1 of 25



Mohawk Solar
Towns of Canajoharie and Minden,
Montgomery County, New York

Article 10 Application

Figure 4-4: Tax Parcels

Notes: 1. Basemap: USDA NAIP 2017 orthoimagery map service. 2. This map was generated in ArcMap by Environmental Design and Research on May 23, 2019. 3. This is a color graphic. Reproduction in grayscale may misrepresent the data.

Civil Boundaries

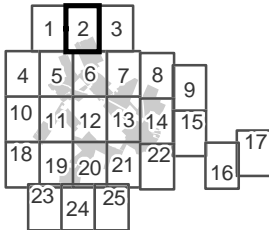
- City/Village Boundary
- Town Boundary

Proposed Facility Components

- Transformer
- Fence Line
- Buried Collection Line
- Access Road
- PV Panel Array
- Facility Site

Land Use

- Parcels within 2000 Feet of Facility Site
- Agricultural
- Residential
- Vacant Land





Mohawk Solar
Towns of Canajoharie and Minden,
Montgomery County, New York

Article 10 Application

Figure 4-4: Tax Parcels

Notes: 1. Basemap: USDA NAIP 2017 orthoimagery map service. 2. This map was generated in ArcMap by Environmental Design and Research on May 23, 2019. 3. This is a color graphic. Reproduction in grayscale may misrepresent the data.

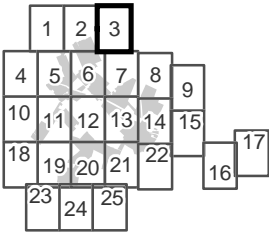
Civil Boundaries

- City/Village Boundary
- Town Boundary

Proposed Facility Components

Land Use

- Parcels within 2000 Feet of Facility Site
- Agricultural
- Residential
- Vacant Land





Mohawk Solar

Towns of Canajoharie and Minden,
Montgomery County, New York

[Article 10 Application](#)

Figure 4-4: Tax Parcels

Notes: 1. Basemap: USDA NAIP 2017 orthoimagery map service. 2. This map was generated in ArcMap by Environmental Design and Research on May 23, 2019. 3. This is a color graphic. Reproduction in grayscale may misrepresent the data.

Civil Boundaries

- City/Village Boundary
- Town Boundary

Proposed Facility Components

Land Use

- Parcels within 2000 Feet of Facility Site
- Agricultural
- Residential
- Vacant Land

Sheet 4 of 25



Mohawk Solar

Towns of Canajoharie and Minden,
Montgomery County, New York

Article 10 Application

Figure 4-4: Tax Parcels

Notes: 1. Basemap: USDA NAIP 2017 orthoimagery map service. 2. This map was generated in ArcMap by Environmental Design and Research on May 23, 2019. 3. This is a color graphic. Reproduction in grayscale may misrepresent the data.

Civil Boundaries

- City/Village Boundary
- Town Boundary

Proposed Facility Components

- Transformer
- Fence Line
- Buried Collection Line
- Access Road
- PV Panel Array
- Laydown Area
- Facility Site

Land Use

- Parcels within 2000 Feet of Facility Site
- Agricultural
- Public Services
- Residential
- Vacant Land

1

2

3

4

5

6

7

8

9

10

11

12

13

14

15

16

17

18

19

20

21

22

23

24

25

AVANGRID
RENEWABLES

Sheet 5 of 25



Mohawk Solar

Towns of Canajoharie and Minden,
Montgomery County, New York

[Article 10 Application](#)

Figure 4-4: Tax Parcels

Notes: 1. Basemap: USDA NAIP 2017 orthoimagery map service. 2. This map was generated in ArcMap by Environmental Design and Research on May 23, 2019. 3. This is a color graphic. Reproduction in grayscale may misrepresent the data.

Civil Boundaries

- City/Village Boundary
- Town Boundary

Proposed Facility Components

- Transformer
- Fence Line
- Buried Collection Line
- Access Road
- PV Panel Array
- Laydown Area
- Facility Site

Land Use

- Parcels within 2000 Feet of Facility Site
- Agricultural
- Community Services
- Public Services
- Residential
- Vacant Land

Sheet 6 of 25



Mohawk Solar

Towns of Canajoharie and Minden,
Montgomery County, New York

[Article 10 Application](#)

Figure 4-4: Tax Parcels

Notes: 1. Basemap: USDA NAIP 2017 orthoimagery map service. 2. This map was generated in ArcMap by Environmental Design and Research on May 23, 2019. 3. This is a color graphic. Reproduction in grayscale may misrepresent the data.

Civil Boundaries

- City/Village Boundary
- Town Boundary

Proposed Facility Components

- Fence Line
- Buried Collection Line
- Access Road
- PV Panel Array
- Facility Site

Land Use

- Parcels within 2000 Feet of Facility Site
- Agricultural
- Public Services
- Residential
- Vacant Land

1

2

3

4

5

6

7

8

9

10

11

12

13

14

15

18

19

20

21

22

17

23

24

25

16

Sheet 7 of 25



Mohawk Solar
Towns of Canajoharie and Minden,
Montgomery County, New York

Article 10 Application

Figure 4-4: Tax Parcels

Notes: 1. Basemap: USDA NAIP 2017 orthoimagery map service. 2. This map was generated in ArcMap by Environmental Design and Research on May 23, 2019. 3. This is a color graphic. Reproduction in grayscale may misrepresent the data.

Civil Boundaries

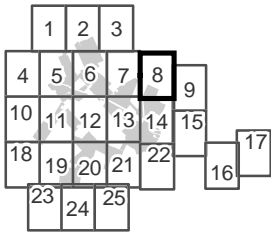
- City/Village Boundary
- Town Boundary

Proposed Facility Components

- Transformer
- Fence Line
- Buried Collection Line
- Access Road
- PV Panel Array
- Facility Site

Land Use

- Parcels within 2000 Feet of Facility Site
- Agricultural
- Public Services
- Residential
- Vacant Land





Mohawk Solar

Towns of Canajoharie and Minden,
Montgomery County, New York

[Article 10 Application](#)

Figure 4-4: Tax Parcels

Notes: 1. Basemap: USDA NAIP 2017 orthoimagery map service. 2. This map was generated in ArcMap by Environmental Design and Research on May 23, 2019. 3. This is a color graphic. Reproduction in grayscale may misrepresent the data.

Civil Boundaries

- City/Village Boundary
- Town Boundary

Proposed Facility Components

Land Use

- Parcels within 2000 Feet of Facility Site
- Agricultural
- Public Services
- Residential
- Vacant Land

	1	2	3	
4	5	6	7	8
10	11	12	13	14
18	19	20	21	22
23	24	25		

Sheet 9 of 25



Mohawk Solar
Towns of Canajoharie and Minden,
Montgomery County, New York

Article 10 Application

Figure 4-4: Tax Parcels

Notes: 1. Basemap: USDA NAIP 2017 orthoimagery map service. 2. This map was generated in ArcMap by Environmental Design and Research on May 23, 2019. 3. This is a color graphic. Reproduction in grayscale may misrepresent the data.

Civil Boundaries

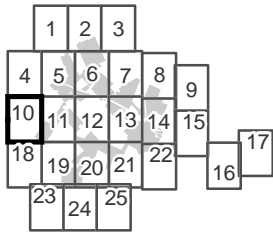
- City/Village Boundary
- Town Boundary

Proposed Facility Components

- Fence Line
- Buried Collection Line
- Access Road
- Facility Site

Land Use

- Parcels within 2000 Feet of Facility Site
- Agricultural
- Residential
- Vacant Land





Mohawk Solar
Towns of Canajoharie and Minden,
Montgomery County, New York

Article 10 Application

Figure 4-4: Tax Parcels

Notes: 1. Basemap: USDA NAIP 2017 orthoimagery map service. 2. This map was generated in ArcMap by Environmental Design and Research on May 23, 2019. 3. This is a color graphic. Reproduction in grayscale may misrepresent the data.

Civil Boundaries

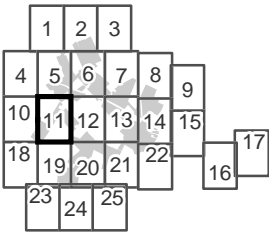
- City/Village Boundary
- Town Boundary

Proposed Facility Components

- Transformer
- Fence Line
- Buried Collection Line
- Access Road
- PV Panel Array
- Facility Site

Land Use

- Parcels within 2000 Feet of Facility Site
- Agricultural
- Residential
- Vacant Land





Mohawk Solar

Towns of Canajoharie and Minden,
Montgomery County, New York

Article 10 Application

Figure 4-4: Tax Parcels

Notes: 1. Basemap: USDA NAIP 2017 orthoimagery map service. 2. This map was generated in ArcMap by Environmental Design and Research on May 23, 2019. 3. This is a color graphic. Reproduction in grayscale may misrepresent the data.

Civil Boundaries

- City/Village Boundary
- Town Boundary

Proposed Facility Components

- Transformer
- O&M Building
- Fence Line
- Buried Collection Line
- Access Road
- PV Panel Array
- Facility Site

Land Use

- Parcels within 2000 Feet of Facility Site
- Agricultural
- Public Services
- Residential
- Vacant Land

1 2 3
4 5 6 7 8 9
10 11 12 13 14 15
18 19 20 21 22
23 24 25

AVANGRID
RENEWABLES

Sheet 12 of 25



Mohawk Solar

Towns of Canajoharie and Minden,
Montgomery County, New York

[Article 10 Application](#)

Figure 4-4: Tax Parcels

Notes: 1. Basemap: USDA NAIP 2017 orthoimagery map service. 2. This map was generated in ArcMap by Environmental Design and Research on May 23, 2019. 3. This is a color graphic. Reproduction in grayscale may misrepresent the data.

Civil Boundaries

- City/Village Boundary
- Town Boundary

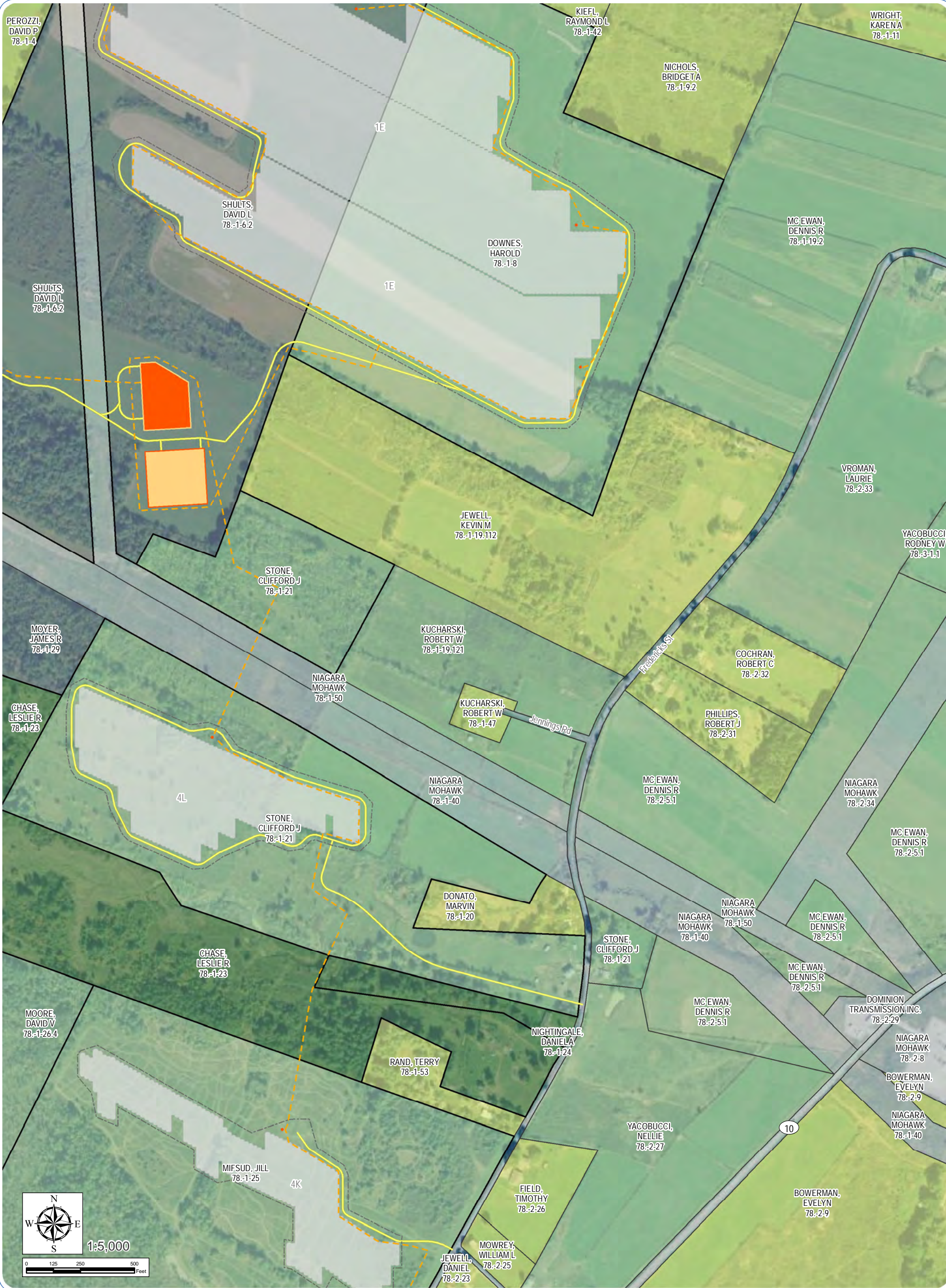
Proposed Facility Components

- Transformer
- Fence Line
- Buried Collection Line
- Access Road
- PV Panel Array
- Facility Site

Land Use

- Parcels within 2000 Feet of Facility Site
- Agricultural
- Public Services
- Residential
- Vacant Land
- Wild, Forested, Conservation Lands & Public Parks

Sheet 13 of 25



Mohawk Solar

Towns of Canajoharie and Minden,
Montgomery County, New York

[Article 10 Application](#)

Figure 4-4: Tax Parcels

Notes: 1. Basemap: USDA NAIP 2017 orthoimagery map service. 2. This map was generated in ArcMap by Environmental Design and Research on May 23, 2019. 3. This is a color graphic. Reproduction in grayscale may misrepresent the data.

Civil Boundaries

- City/Village Boundary
- Town Boundary

Proposed Facility Components

- Transformer
- Fence Line
- Buried Collection Line
- Access Road
- PV Panel Array
- POI Switchyard
- Collection Substation
- Facility Site

Land Use

- Parcels within 2000 Feet of Facility Site
- Agricultural
- Public Services
- Residential
- Vacant Land
- Wild, Forested, Conservation Lands & Public Parks

1

2

3

4

5

6

7

8

9

10

11

12

13

14

15

16

17

18

19

20

21

22

23

24

25

AVANGRID

RENEWABLES

Sheet 14 of 25



Mohawk Solar

Towns of Canajoharie and Minden,
Montgomery County, New York

[Article 10 Application](#)

Figure 4-4: Tax Parcels

Notes: 1. Basemap: USDA NAIP 2017 orthoimagery map service. 2. This map was generated in ArcMap by Environmental Design and Research on May 23, 2019. 3. This is a color graphic. Reproduction in grayscale may misrepresent the data.

Civil Boundaries

- City/Village Boundary
- Town Boundary

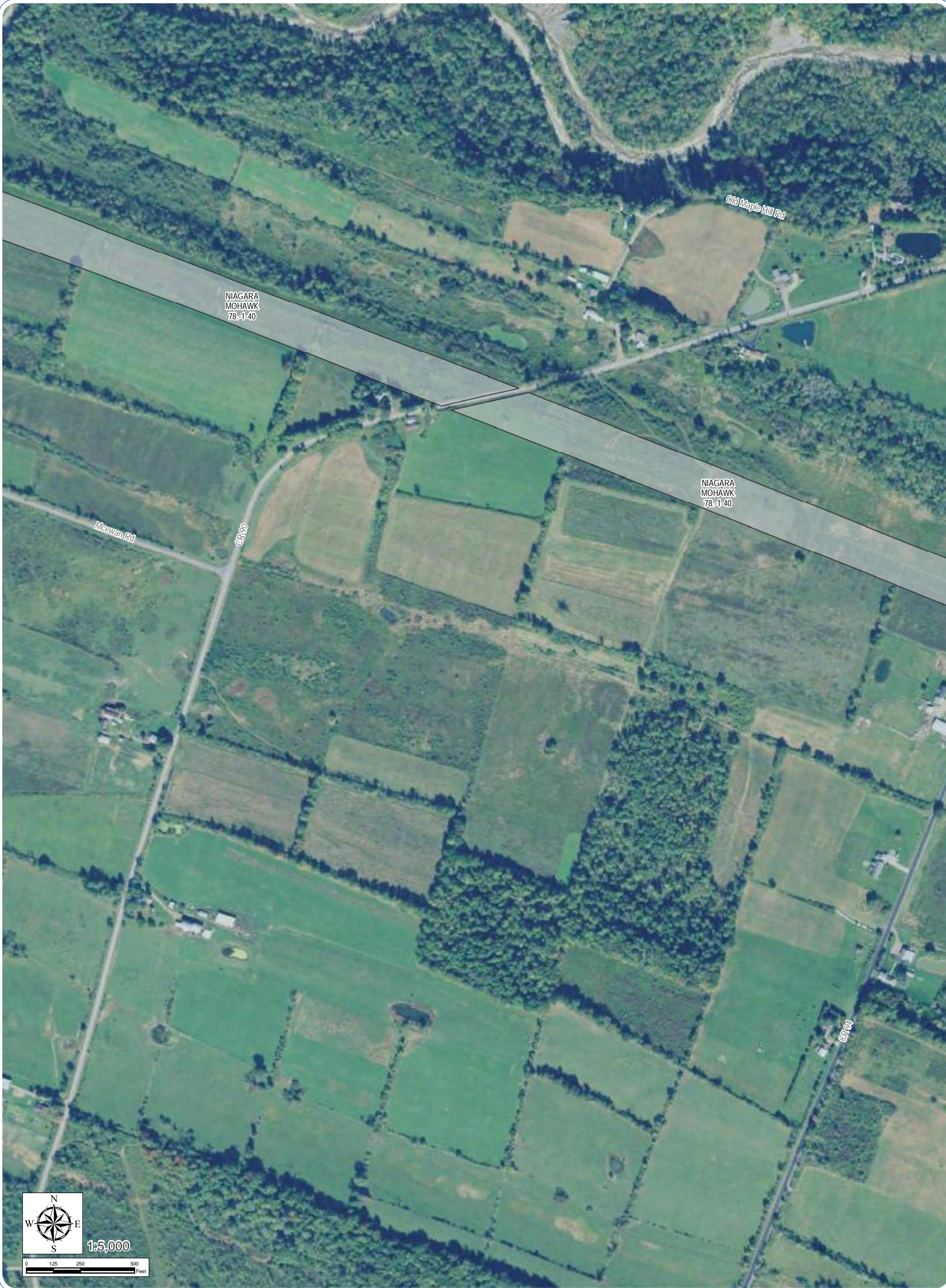
Proposed Facility Components

Land Use

- Parcels within 2000 Feet of Facility Site
- Agricultural
- Public Services
- Residential
- Vacant Land

1	2	3					
4	5	6	7	8	9		
10	11	12	13	14	15	16	17
18	19	20	21	22	23	24	25

Sheet 15 of 25



Mohawk Solar
Towns of Canajoharie and Minden,
Montgomery County, New York

Article 10 Application

Figure 4-4: Tax Parcels

Notes: 1. Basemap: USDA NAIP 2017 orthoimagery map service. 2. This map was generated in ArcMap by Environmental Design and Research on May 23, 2019. 3. This is a color graphic. Reproduction in grayscale may misrepresent the data.

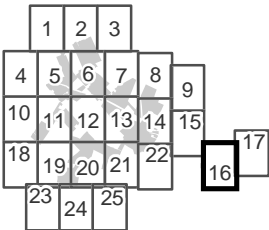
Civil Boundaries

- City/Village Boundary
- Town Boundary

Proposed Facility Components

Land Use

- Parcels within 2000 Feet of Facility Site
- Public Services





Mohawk Solar
Towns of Canajoharie and Minden,
Montgomery County, New York

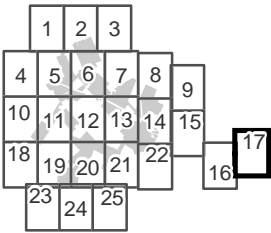
Article 10 Application
Figure 4-4: Tax Parcels

Notes: 1. Basemap: USDA NAIP 2017 orthoimagery map service. 2. This map was generated in ArcMap by Environmental Design and Research on May 23, 2019. 3. This is a color graphic. Reproduction in grayscale may misrepresent the data.

- Civil Boundaries
- City/Village Boundary
 - Town Boundary

Proposed Facility Components

- Land Use
- Parcels within 2000 Feet of Facility Site
 - Public Services





Mohawk Solar
Towns of Canajoharie and Minden,
Montgomery County, New York

Article 10 Application

Figure 4-4: Tax Parcels

Notes: 1. Basemap: USDA NAIP 2017 orthoimagery map service. 2. This map was generated in ArcMap by Environmental Design and Research on May 23, 2019. 3. This is a color graphic. Reproduction in grayscale may misrepresent the data.

Civil Boundaries

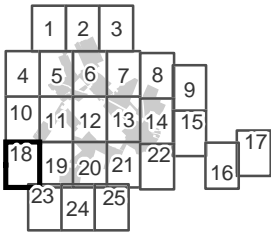
- City/Village Boundary
- Town Boundary

Proposed Facility Components

- Facility Site

Land Use

- Parcels within 2000 Feet of Facility Site
- Agricultural
- Residential
- Vacant Land





Mohawk Solar

Towns of Canajoharie and Minden,
Montgomery County, New York

[Article 10 Application](#)

Figure 4-4: Tax Parcels

Notes: 1. Basemap: USDA NAIP 2017 orthoimagery map service. 2. This map was generated in ArcMap by Environmental Design and Research on May 23, 2019. 3. This is a color graphic. Reproduction in grayscale may misrepresent the data.

Civil Boundaries

- City/Village Boundary
- Town Boundary

Proposed Facility Components

- Transformer
- Fence Line
- Buried Collection Line
- Access Road
- PV Panel Array
- Facility Site

Land Use

- Parcels within 2000 Feet of Facility Site
- Agricultural
- Residential
- Vacant Land

Sheet 19 of 25



Mohawk Solar

Towns of Canajoharie and Minden,
Montgomery County, New York

Article 10 Application

Figure 4-4: Tax Parcels

Notes: 1. Basemap: USDA NAIP 2017 orthoimagery map service. 2. This map was generated in ArcMap by Environmental Design and Research on May 23, 2019. 3. This is a color graphic. Reproduction in grayscale may misrepresent the data.

Civil Boundaries

- City/Village Boundary
- Town Boundary

Proposed Facility Components

- Transformer
- Fence Line
- Buried Collection Line
- Access Road
- PV Panel Array
- Facility Site

Land Use

- Parcels within 2000 Feet of Facility Site
- Agricultural
- Residential
- Vacant Land

Sheet 20 of 25

1

2

3

4

5

6

7

8

9

10

11

12

13

14

15

16

17

18

19

20

21

22

23

24

25



Mohawk Solar

Towns of Canajoharie and Minden,
Montgomery County, New York

[Article 10 Application](#)

Figure 4-4: Tax Parcels

Notes: 1. Basemap: USDA NAIP 2017 orthoimagery map service. 2. This map was generated in ArcMap by Environmental Design and Research on May 23, 2019. 3. This is a color graphic. Reproduction in grayscale may misrepresent the data.

Civil Boundaries

- City/Village Boundary
- Town Boundary

Proposed Facility Components

- Transformer
- Fence Line
- Buried Collection Line
- Access Road
- PV Panel Array
- Facility Site

Land Use

- Parcels within 2000 Feet of Facility Site
- Agricultural
- Residential
- Vacant Land

1 2 3
4 5 6 7 8 9
10 11 12 13 14 15
18 19 20 21 22 17
23 24 25 16

AVANGRID
RENEWABLES

Sheet 21 of 25



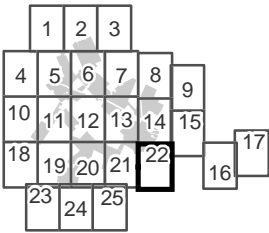
Mohawk Solar
Towns of Canajoharie and Minden,
Montgomery County, New York
Article 10 Application
Figure 4-4: Tax Parcels
Notes: 1. Basemap: USDA NAIP 2017 orthoimagery map service. 2. This map was generated in ArcMap by Environmental Design and Research on May 23, 2019. 3. This is a color graphic. Reproduction in grayscale may misrepresent the data.

- Civil Boundaries**

 - City/Village Boundary
 - Town Boundary
- Proposed Facility Components**

 - Transformer
 - Fence Line
 - Buried Collection Line
 - Access Road
 - PV Panel Array
 - Facility Site
- Land Use**

 - Parcels within 2000 Feet of Facility Site
 - Agricultural
 - Commercial
 - Community Services
 - Residential
 - Vacant Land





Mohawk Solar
Towns of Canajoharie and Minden,
Montgomery County, New York

Article 10 Application
Figure 4-4: Tax Parcels

Notes: 1. Basemap: USDA NAIP 2017 orthoimagery map service. 2. This map was generated in ArcMap by Environmental Design and Research on May 23, 2019. 3. This is a color graphic. Reproduction in grayscale may misrepresent the data.

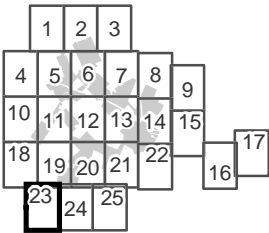
Civil Boundaries

- City/Village Boundary
- Town Boundary

Proposed Facility Components

Land Use

- Parcels within 2000 Feet of Facility Site
- Agricultural
- Residential





Mohawk Solar

Towns of Canajoharie and Minden,
Montgomery County, New York

[Article 10 Application](#)

Figure 4-4: Tax Parcels

Notes: 1. Basemap: USDA NAIP 2017 orthoimagery map service. 2. This map was generated in ArcMap by Environmental Design and Research on May 23, 2019. 3. This is a color graphic. Reproduction in grayscale may misrepresent the data.

Civil Boundaries

- City/Village Boundary
- Town Boundary

Proposed Facility Components

- Facility Site

Land Use

- Parcels within 2000 Feet of Facility Site
- Agricultural
- Residential

1	2	3		
4	5	6	7	8
10	11	12	13	14
18	19	20	21	22
23	24	25		

17

16

Sheet 24 of 25



Mohawk Solar
Towns of Canajoharie and Minden,
Montgomery County, New York

Article 10 Application

Figure 4-4: Tax Parcels

Notes: 1. Basemap: USDA NAIP 2017 orthoimagery map service. 2. This map was generated in ArcMap by Environmental Design and Research on May 23, 2019. 3. This is a color graphic. Reproduction in grayscale may misrepresent the data.

Civil Boundaries

- City/Village Boundary
- Town Boundary

Proposed Facility Components

Land Use

- Parcels within 2000 Feet of Facility Site
- Agricultural
- Residential

