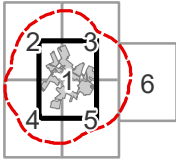


Mohawk Solar
Towns of Canajoharie and Minden,
Montgomery County, New York

Article 10 Application
Figure 4-1: Existing Land Use

Notes: 1. Basemap: ESRI StreetMap North America, 2008. 2. This map was generated in ArcMap by Environmental Design and Research on May 16, 2019. 3. This is a color graphic. Reproduction in grayscale may misrepresent the data. 4. Residences were mapped within 1,500 ft of the facility site.



Sheet 1 of 6

Proposed Facility Components

- | | |
|------------------------------|-----------------------------------|
| ■ O&M Building | ■ POI Switchyard |
| ● Transformer | ■ Collection Substation |
| --- Fence Line | □ Laydown Area |
| - - - Buried Collection Line | □ Facility Site |
| — Access Road | □ 2 Mile Facility Site Study Area |
| ■ PV Panel Array | |

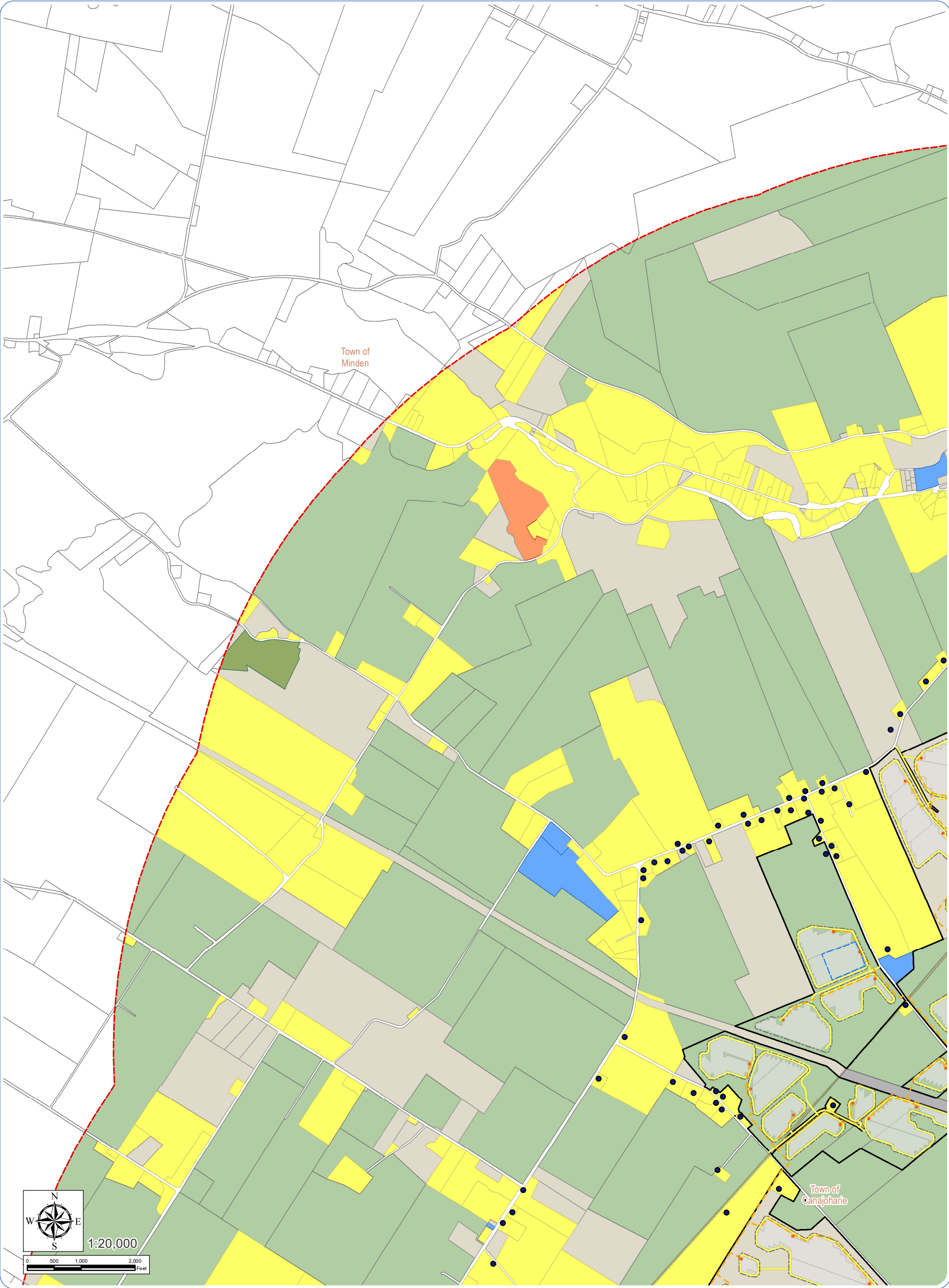
Civil Boundaries

- | | | |
|---------------------|-------------------------|-----------------|
| □ Parcel Boundaries | □ City/Village Boundary | □ Town Boundary |
|---------------------|-------------------------|-----------------|

Land Use

- | | |
|------------------------------|---|
| ● Residences | ■ Residential |
| ■ Agricultural | ■ Wild, Forested, Conservation Lands & Public Parks |
| ■ Commercial | ■ Public Services |
| ■ Community Services | ■ Vacant Land |
| ■ Recreation & Entertainment | |

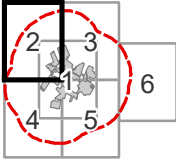




Mohawk Solar
Towns of Canajoharie and Minden,
Montgomery County, New York

Article 10 Application
Figure 4-1: Existing Land Use

Notes: 1. Basemap: ESRI StreetMap North America, 2008. 2. This map was generated in ArcMap by Environmental Design and Research on May 16, 2019. 3. This is a color graphic. Reproduction in grayscale may misrepresent the data. 4. Residences were mapped within 1,500 ft of the facility site.



Sheet 2 of 6

Proposed Facility Components

- | | |
|------------------------------|-----------------------------------|
| ■ O&M Building | ■ POI Switchyard |
| ● Transformer | ■ Collection Substation |
| --- Fence Line | □ Laydown Area |
| - - - Buried Collection Line | □ Facility Site |
| — Access Road | □ 2 Mile Facility Site Study Area |
| ■ PV Panel Array | |

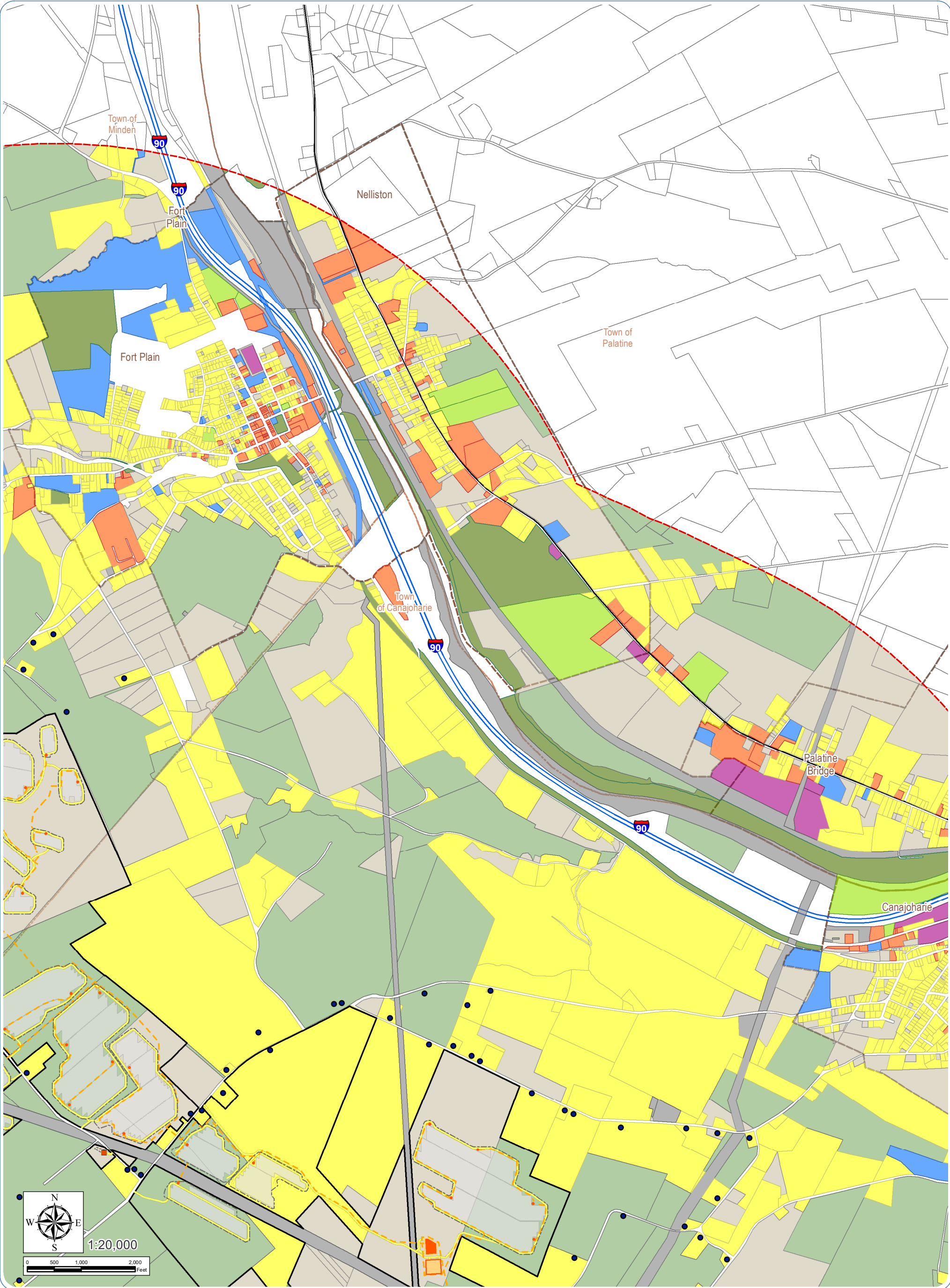
Civil Boundaries

- | | | |
|---------------------|-------------------------|-----------------|
| □ Parcel Boundaries | □ City/Village Boundary | □ Town Boundary |
|---------------------|-------------------------|-----------------|

Land Use

- | | |
|---|-------------------|
| ● Residences | ■ Public Services |
| ■ Agricultural | ■ Vacant Land |
| ■ Commercial | |
| ■ Community Services | |
| ■ Residential | |
| ■ Wild, Forested, Conservation Lands & Public Parks | |

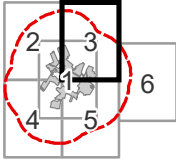




Mohawk Solar
Towns of Canajoharie and Minden,
Montgomery County, New York

Article 10 Application
Figure 4-1: Existing Land Use

Notes: 1. Basemap: ESRI StreetMap North America, 2008. 2. This map was generated in ArcMap by Environmental Design and Research on May 16, 2019. 3. This is a color graphic. Reproduction in grayscale may misrepresent the data. 4. Residences were mapped within 1,500 ft of the facility site.



Sheet 3 of 6

Proposed Facility Components

- O&M Building
- Transformer
- Fence Line
- Buried Collection Line
- Access Road
- PV Panel Array
- POI Switchyard
- Collection Substation
- Laydown Area
- Facility Site
- 2 Mile Facility Site Study Area

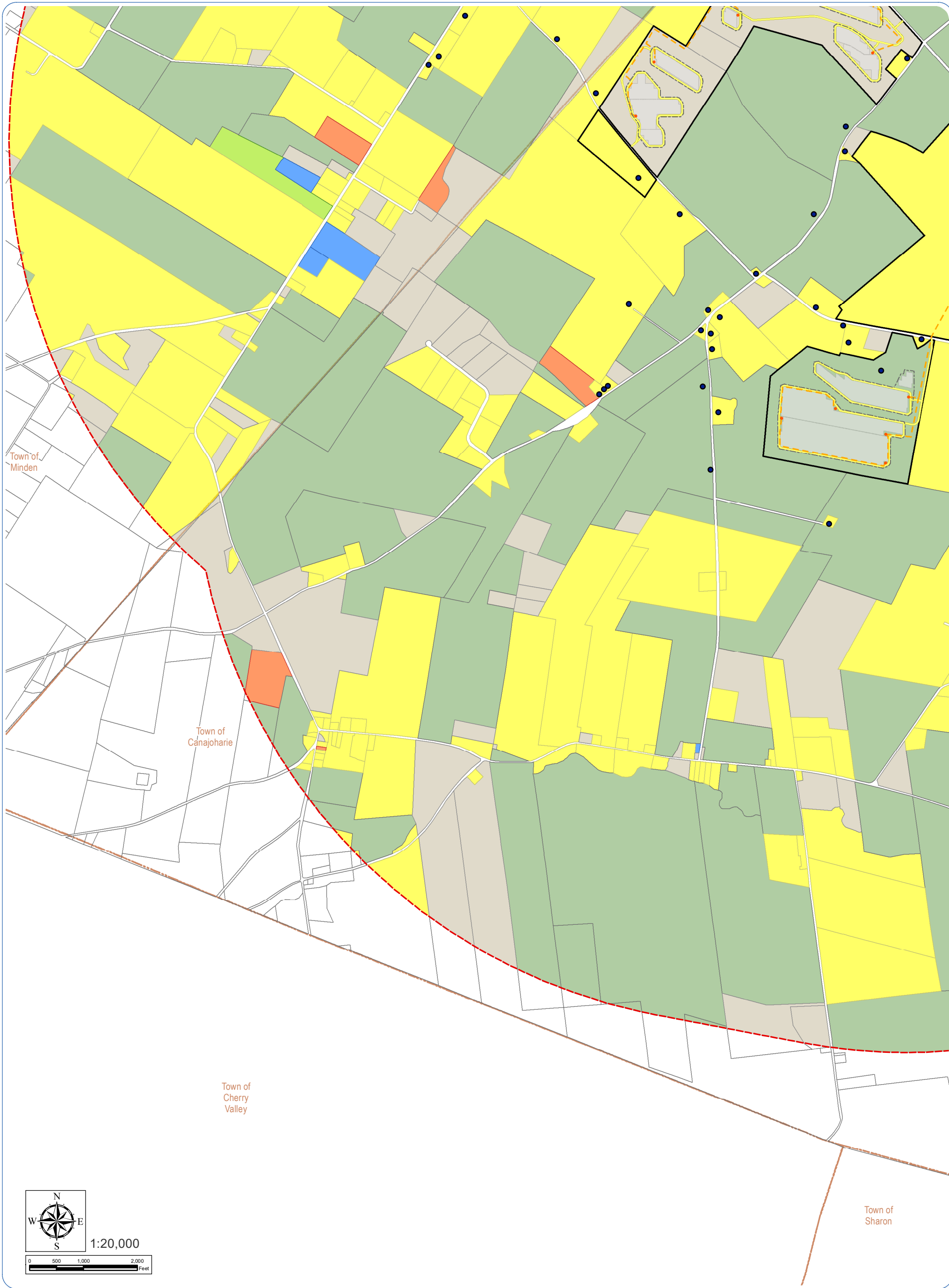
Civil Boundaries

- Parcel Boundaries
- City/Village Boundary
- Town Boundary

Land Use

- Residences
- Agricultural
- Commercial
- Community Services
- Industrial
- Recreation & Entertainment
- Residential
- Wild, Forested, Conservation Lands & Public Parks
- Public Services
- Vacant Land





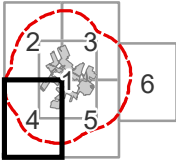
Mohawk Solar

Towns of Canajoharie and Minden,
Montgomery County, New York

Article 10 Application

Figure 4-1: Existing Land Use

Notes: 1. Basemap: ESRI StreetMap North America, 2008. 2. This map was generated in ArcMap by Environmental Design and Research on May 16, 2019. 3. This is a color graphic. Reproduction in grayscale may misrepresent the data. 4. Residences were mapped within 1,500 ft of the facility site.



Sheet 4 of 6

Proposed Facility Components

- | | |
|------------------------------|-----------------------------------|
| ■ O&M Building | ■ POI Switchyard |
| ● Transformer | ■ Collection Substation |
| --- Fence Line | □ Laydown Area |
| - - - Buried Collection Line | □ Facility Site |
| — Access Road | □ 2 Mile Facility Site Study Area |
| ■ PV Panel Array | |

Civil Boundaries

- | | | |
|---------------------|-------------------------|-----------------|
| □ Parcel Boundaries | □ City/Village Boundary | □ Town Boundary |
|---------------------|-------------------------|-----------------|

Land Use

- | | |
|------------------------------|---------------|
| ● Residences | ■ Residential |
| ■ Agricultural | ■ Vacant Land |
| ■ Commercial | |
| ■ Community Services | |
| ■ Recreation & Entertainment | |

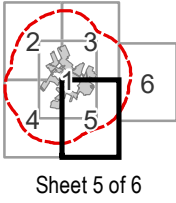




Mohawk Solar
Towns of Canajoharie and Minden,
Montgomery County, New York

Article 10 Application
Figure 4-1: Existing Land Use

Notes: 1. Basemap: ESRI StreetMap North America, 2008. 2. This map was generated in ArcMap by Environmental Design and Research on May 16, 2019. 3. This is a color graphic. Reproduction in grayscale may misrepresent the data. 4. Residences were mapped within 1,500 ft of the facility site.



Sheet 5 of 6

Proposed Facility Components

- | | |
|------------------------------|-----------------------------------|
| ■ O&M Building | ■ POI Switchyard |
| ● Transformer | ■ Collection Substation |
| --- Fence Line | □ Laydown Area |
| - - - Buried Collection Line | □ Facility Site |
| — Access Road | □ 2 Mile Facility Site Study Area |
| ■ PV Panel Array | |

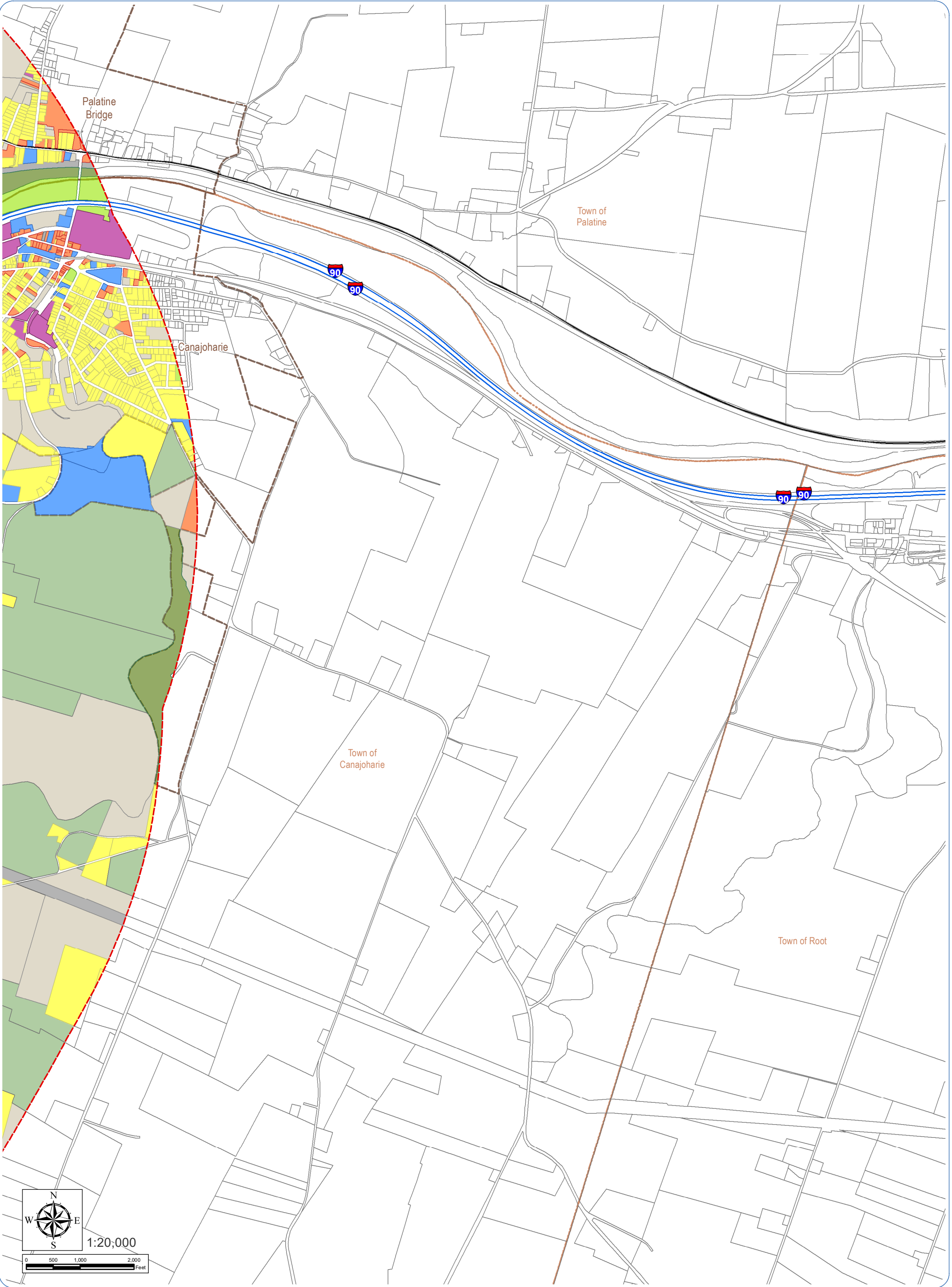
Civil Boundaries

- | | | |
|---------------------|-------------------------|-----------------|
| □ Parcel Boundaries | □ City/Village Boundary | □ Town Boundary |
|---------------------|-------------------------|-----------------|

Land Use

- | | |
|------------------------------|---|
| ● Residences | ■ Residential |
| ■ Agricultural | ■ Wild, Forested, Conservation Lands & Public Parks |
| ■ Commercial | ■ Public Services |
| ■ Community Services | ■ Vacant Land |
| ■ Recreation & Entertainment | |

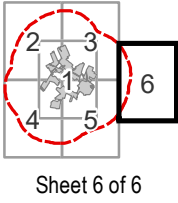




Mohawk Solar
Towns of Canajoharie and Minden,
Montgomery County, New York

Article 10 Application
Figure 4-1: Existing Land Use

Notes: 1. Basemap: ESRI StreetMap North America, 2008. 2. This map was generated in ArcMap by Environmental Design and Research on May 16, 2019. 3. This is a color graphic. Reproduction in grayscale may misrepresent the data. 4. Residences were mapped within 1,500 ft of the facility site.



Sheet 6 of 6

Proposed Facility Components

- | | |
|------------------------------|-----------------------------------|
| ■ O&M Building | ■ POI Switchyard |
| ● Transformer | ■ Collection Substation |
| --- Fence Line | □ Laydown Area |
| - - - Buried Collection Line | □ Facility Site |
| — Access Road | □ 2 Mile Facility Site Study Area |
| ■ PV Panel Array | |

Civil Boundaries

- | | | |
|---------------------|-------------------------|-----------------|
| □ Parcel Boundaries | □ City/Village Boundary | □ Town Boundary |
|---------------------|-------------------------|-----------------|

Land Use

- | | |
|------------------------------|---|
| ■ Agricultural | ■ Residential |
| ■ Commercial | ■ Wild, Forested, Conservation Lands & Public Parks |
| ■ Community Services | ■ Public Services |
| ■ Industrial | ■ Vacant Land |
| ■ Recreation & Entertainment | |

