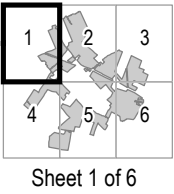


Mohawk Solar
Towns of Canajoharie and Minden,
Montgomery County, New York
[Article 10 Application](#)

Figure 22-2: Delineated Wetlands

Notes: 1. Basemap: NYSDOP "2017" orthoimagery map service. 2. This map was generated in ArcMap by Environmental Design and Research on May 29, 2019. 3. This is a color graphic. Reproduction in grayscale may misrepresent the data.



Proposed Facility Components

- Transformer
- O&M Building
- Fence Line
- Buried Collection Line
- Access Road
- PV Panel Array
- POI Switchyard
- Collection Substation
- Laydown Area
- Facility Site

Wetland Features

- Delineated NYSDEC Jurisdictional Wetland
- NYSDEC Jurisdictional Wetland 100 ft Adjacent Area
- Delineated Wetland/Stream
- Predicted Wetland/Stream
- 500 ft Setback From Limits of Disturbance

Civil Boundaries

- Town Boundary

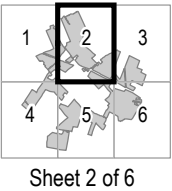




Mohawk Solar
Towns of Canajoharie and Minden,
Montgomery County, New York
Article 10 Application

Figure 22-2: Delineated Wetlands

Notes: 1. Basemap: NYSDOP "2017" orthoimagery map service. 2. This map was generated in ArcMap by Environmental Design and Research on May 29, 2019. 3. This is a color graphic. Reproduction in grayscale may misrepresent the data.



Proposed Facility Components

- Transformer
- O&M Building
- Fence Line
- Buried Collection Line
- Access Road
- PV Panel Array
- POI Switchyard
- Collection Substation
- Laydown Area
- Facility Site

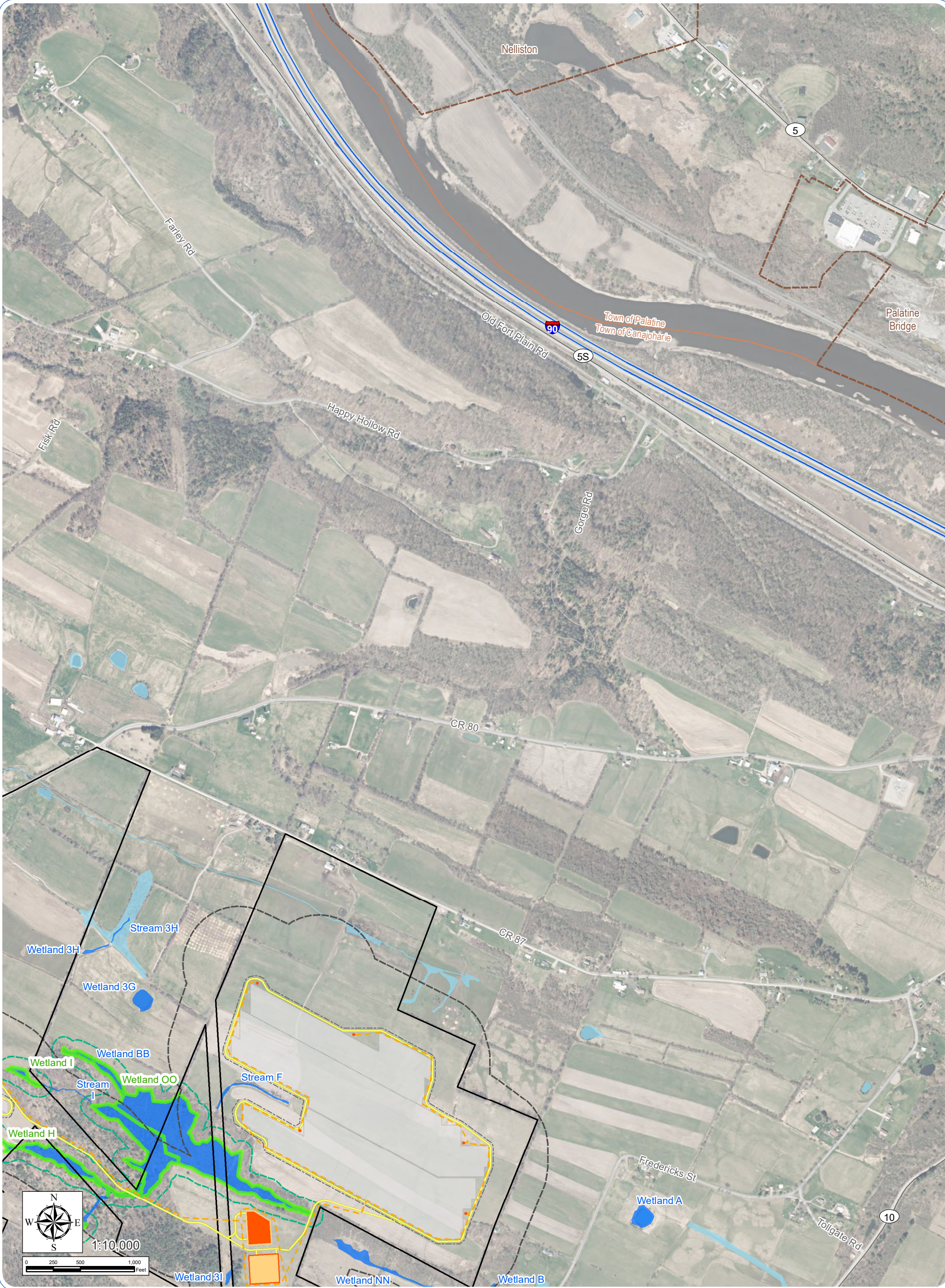
Wetland Features

- Delineated NYSDEC Jurisdictional Wetland
- NYSDEC Jurisdictional Wetland 100 ft Adjacent Area
- Delineated Wetland/Stream
- Predicted Wetland/Stream
- 500 ft Setback From Limits of Disturbance

Civil Boundaries

- City/Village Boundary
- Town Boundary

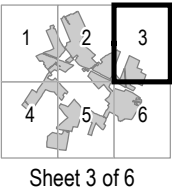




Mohawk Solar
Towns of Canajoharie and Minden,
Montgomery County, New York
[Article 10 Application](#)

Figure 22-2: Delineated Wetlands

Notes: 1. Basemap: NYSDOP "2017" orthoimagery map service. 2. This map was generated in ArcMap by Environmental Design and Research on May 29, 2019. 3. This is a color graphic. Reproduction in grayscale may misrepresent the data.



Proposed Facility Components

- Transformer
- O&M Building
- Fence Line
- Buried Collection Line
- Access Road
- PV Panel Array
- POI Switchyard
- Collection Substation
- Laydown Area
- Facility Site

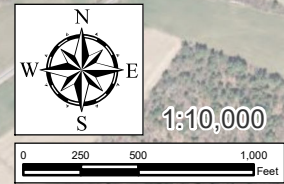
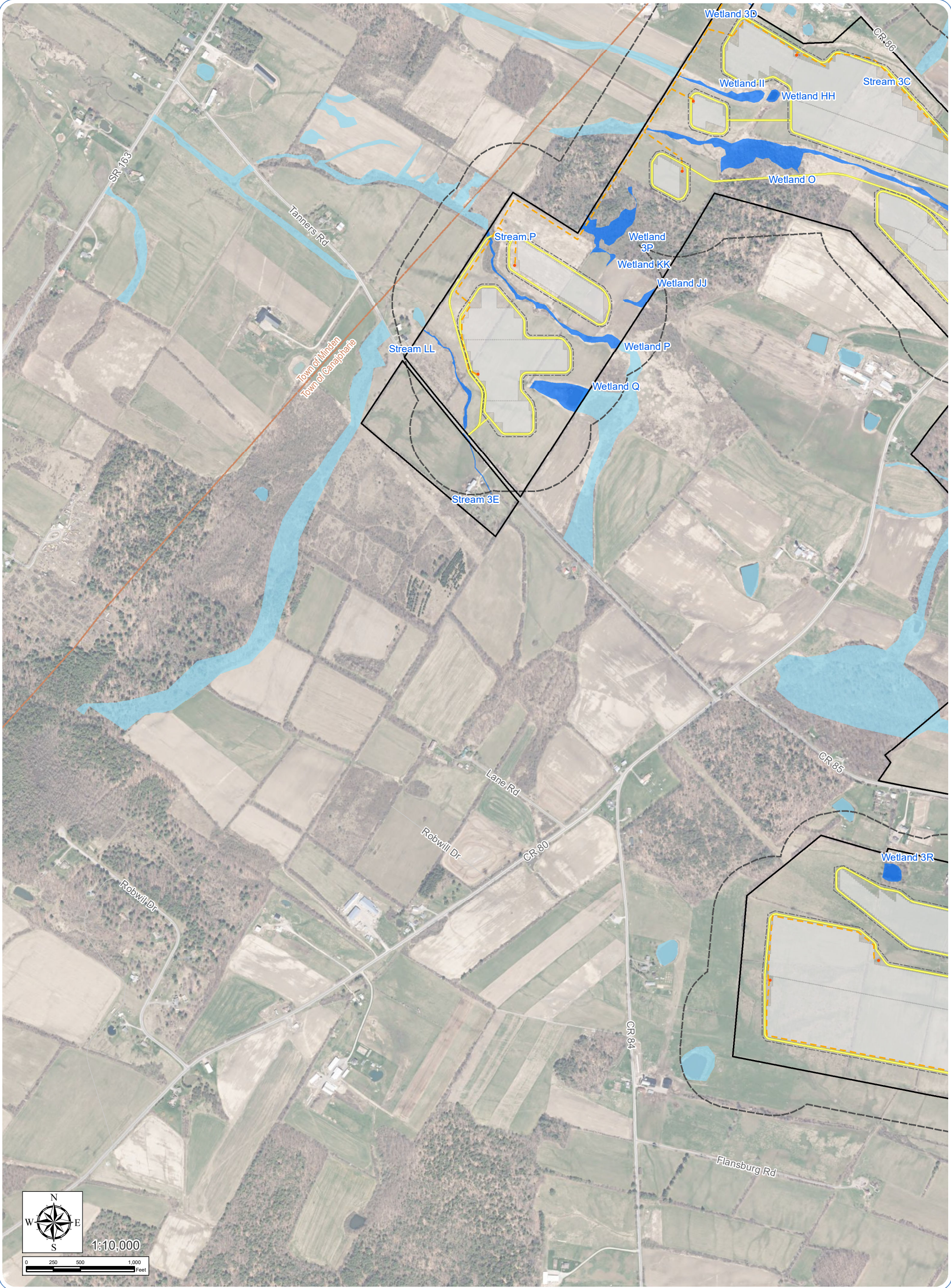
Wetland Features

- Delineated NYSDEC Jurisdictional Wetland
- NYSDEC Jurisdictional Wetland 100 ft Adjacent Area
- Delineated Wetland/Stream
- Predicted Wetland/Stream
- 500 ft Setback From Limits of Disturbance

Civil Boundaries

- City/Village Boundary
- Town Boundary





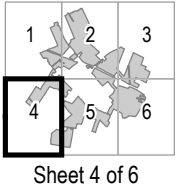
Mohawk Solar

Towns of Canajoharie and Minden,
Montgomery County, New York

Article 10 Application

Figure 22-2: Delineated Wetlands

Notes: 1. Basemap: NYSDOP "2017" orthoimagery map service. 2. This map was generated in ArcMap by Environmental Design and Research on May 29, 2019. 3. This is a color graphic. Reproduction in grayscale may misrepresent the data.



Proposed Facility Components

- Transformer
- O&M Building
- Fence Line
- Buried Collection Line
- Access Road
- PV Panel Array
- POI Switchyard
- Collection Substation
- Laydown Area
- Facility Site

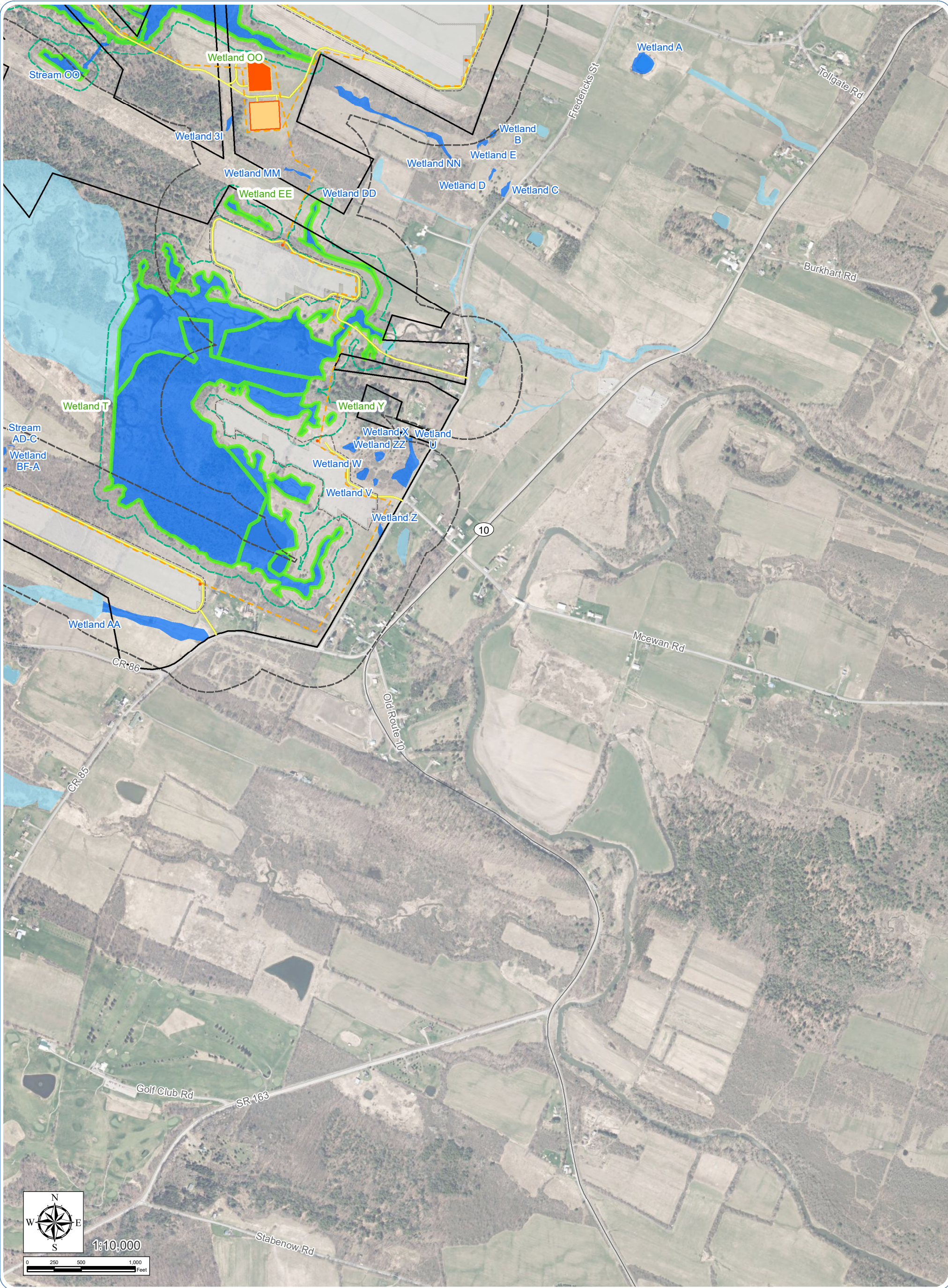
Wetland Features

- Delineated NYSDEC Jurisdictional Wetland
- NYSDEC Jurisdictional Wetland 100 ft Adjacent Area
- Delineated Wetland/Stream
- Predicted Wetland/Stream
- 500 ft Setback From Limits of Disturbance

Civil Boundaries

- Town Boundary

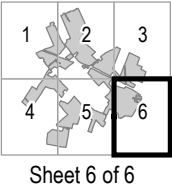




Mohawk Solar
Towns of Canajoharie and Minden,
Montgomery County, New York
Article 10 Application

Figure 22-2: Delineated Wetlands

Notes: 1. Basemap: NYSDOP "2017" orthoimagery map service. 2. This map was generated in ArcMap by Environmental Design and Research on May 29, 2019. 3. This is a color graphic. Reproduction in grayscale may misrepresent the data.



Sheet 6 of 6

Proposed Facility Components

- Transformer
- O&M Building
- Fence Line
- Buried Collection Line
- Access Road
- PV Panel Array
- POI Switchyard
- Collection Substation
- Laydown Area
- Facility Site

Wetland Features

- Delineated NYSDEC Jurisdictional Wetland
- NYSDEC Jurisdictional Wetland 100 ft Adjacent Area
- Delineated Wetland/Stream
- Predicted Wetland/Stream
- 500 ft Setback From Limits of Disturbance

Civil Boundaries

- Town Boundary

