



Mohawk Solar
Towns of Canajoharie and Minden,
Montgomery County, New York

Article 10 Application

Figure 22-1: Impact to Plant Communities

Notes: 1. Basemap: NYSDOP "2017" orthoimagery map service. 2. This map was generated in ArcMap by Environmental Design and Research on May 23, 2019. 3. This is a color graphic. Reproduction in grayscale may misrepresent the data. 4. While the scale of mapping depicted in the application may cause some project components or direct impacts to appear on adjacent non-participating parcels, all components will be sited during final design to only be located on or directly impact parcels or portions of parcels which are controlled by the applicant.



- Proposed Facility Components**
- Facility Site
 - Limit of Temporary Soil Disturbance / Vegetation Clearing

- Vegetative Community**
- Agricultural
 - Disturbed/Developed
 - Farm Pond
 - Successional Shrubland
 - Successional Old Field
 - Mixed Deciduous/Coniferous Forest

- Civil Boundaries**
- City/Village Boundary
 - Town Boundary
 - County Boundary





Mohawk Solar
Towns of Canajoharie and Minden,
Montgomery County, New York

Article 10 Application

Figure 22-1: Impact to Plant Communities

Notes: 1. Basemap: NYSDOP "2017" orthoimagery map service. 2. This map was generated in ArcMap by Environmental Design and Research on May 23, 2019. 3. This is a color graphic. Reproduction in grayscale may misrepresent the data. 4. While the scale of mapping depicted in the application may cause some project components or direct impacts to appear on adjacent non-participating parcels, all components will be sited during final design to only be located on or directly impact parcels or portions of parcels which are controlled by the applicant.



- Proposed Facility Components**
- Facility Site
 - Limit of Temporary Soil Disturbance / Vegetation Clearing

- Vegetative Community**
- Agricultural
 - Disturbed/Developed
 - Farm Pond
 - Successional Shrubland
 - Successional Old Field
 - Mixed Deciduous/Coniferous Forest

- Civil Boundaries**
- City/Village Boundary
 - Town Boundary
 - County Boundary





Mohawk Solar
Towns of Canajoharie and Minden,
Montgomery County, New York

Article 10 Application

Figure 22-1: Impact to Plant Communities

Notes: 1. Basemap: NYSDOP "2017" orthoimagery map service. 2. This map was generated in ArcMap by Environmental Design and Research on May 23, 2019. 3. This is a color graphic. Reproduction in grayscale may misrepresent the data. 4. While the scale of mapping depicted in the application may cause some project components or direct impacts to appear on adjacent non-participating parcels, all components will be sited during final design to only be located on or directly impact parcels or portions of parcels which are controlled by the applicant.



Proposed Facility Components

- Facility Site
- Limit of Temporary Soil Disturbance / Vegetation Clearing

Vegetative Community

- Agricultural
- Disturbed/Developed
- Farm Pond
- Successional Shrubland
- Successional Old Field
- Mixed Deciduous/Coniferous Forest

Civil Boundaries

- City/Village Boundary
- Town Boundary
- County Boundary





Mohawk Solar
Towns of Canajoharie and Minden,
Montgomery County, New York

Article 10 Application

Figure 22-1: Impact to Plant Communities

Notes: 1. Basemap: NYSDOP "2017" orthoimagery map service. 2. This map was generated in ArcMap by Environmental Design and Research on May 23, 2019. 3. This is a color graphic. Reproduction in grayscale may misrepresent the data. 4. While the scale of mapping depicted in the application may cause some project components or direct impacts to appear on adjacent non-participating parcels, all components will be sited during final design to only be located on or directly impact parcels or portions of parcels which are controlled by the applicant.



Sheet 4 of 37

- Proposed Facility Components**
- Facility Site
 - Limit of Temporary Soil Disturbance / Vegetation Clearing

- Vegetative Community**
- Agricultural
 - Disturbed/Developed
 - Farm Pond
 - Successional Shrubland
 - Successional Old Field
 - Mixed Deciduous/Coniferous Forest

- Civil Boundaries**
- City/Village Boundary
 - Town Boundary
 - County Boundary





Mohawk Solar
Towns of Canajoharie and Minden,
Montgomery County, New York

Article 10 Application

Figure 22-1: Impact to Plant Communities

Notes: 1. Basemap: NYSDOP "2017" orthoimagery map service. 2. This map was generated in ArcMap by Environmental Design and Research on May 23, 2019. 3. This is a color graphic. Reproduction in grayscale may misrepresent the data. 4. While the scale of mapping depicted in the application may cause some project components or direct impacts to appear on adjacent non-participating parcels, all components will be sited during final design to only be located on or directly impact parcels or portions of parcels which are controlled by the applicant.



- Proposed Facility Components**
- Facility Site
 - Limit of Temporary Soil Disturbance / Vegetation Clearing

- Vegetative Community**
- Agricultural
 - Disturbed/Developed
 - Farm Pond
 - Successional Shrubland
 - Successional Old Field
 - Mixed Deciduous/Coniferous Forest

- Civil Boundaries**
- City/Village Boundary
 - Town Boundary
 - County Boundary



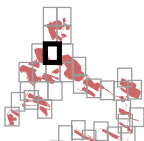


Mohawk Solar
Towns of Canajoharie and Minden,
Montgomery County, New York

Article 10 Application

Figure 22-1: Impact to Plant Communities

Notes: 1. Basemap: NYSDOP "2017" orthoimagery map service. 2. This map was generated in ArcMap by Environmental Design and Research on May 23, 2019. 3. This is a color graphic. Reproduction in grayscale may misrepresent the data. 4. While the scale of mapping depicted in the application may cause some project components or direct impacts to appear on adjacent non-participating parcels, all components will be sited during final design to only be located on or directly impact parcels or portions of parcels which are controlled by the applicant.



Sheet 6 of 37

Proposed Facility Components

- Facility Site
- Limit of Temporary Soil Disturbance / Vegetation Clearing

Vegetative Community

- Agricultural
- Disturbed/Developed
- Farm Pond
- Successional Shrubland
- Successional Old Field
- Mixed Deciduous/Coniferous Forest

Civil Boundaries

- City/Village Boundary
- Town Boundary
- County Boundary



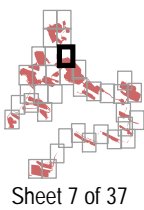


Mohawk Solar
Towns of Canajoharie and Minden,
Montgomery County, New York

Article 10 Application

Figure 22-1: Impact to Plant Communities

Notes: 1. Basemap: NYSDOP "2017" orthoimagery map service. 2. This map was generated in ArcMap by Environmental Design and Research on May 23, 2019. 3. This is a color graphic. Reproduction in grayscale may misrepresent the data. 4. While the scale of mapping depicted in the application may cause some project components or direct impacts to appear on adjacent non-participating parcels, all components will be sited during final design to only be located on or directly impact parcels or portions of parcels which are controlled by the applicant.

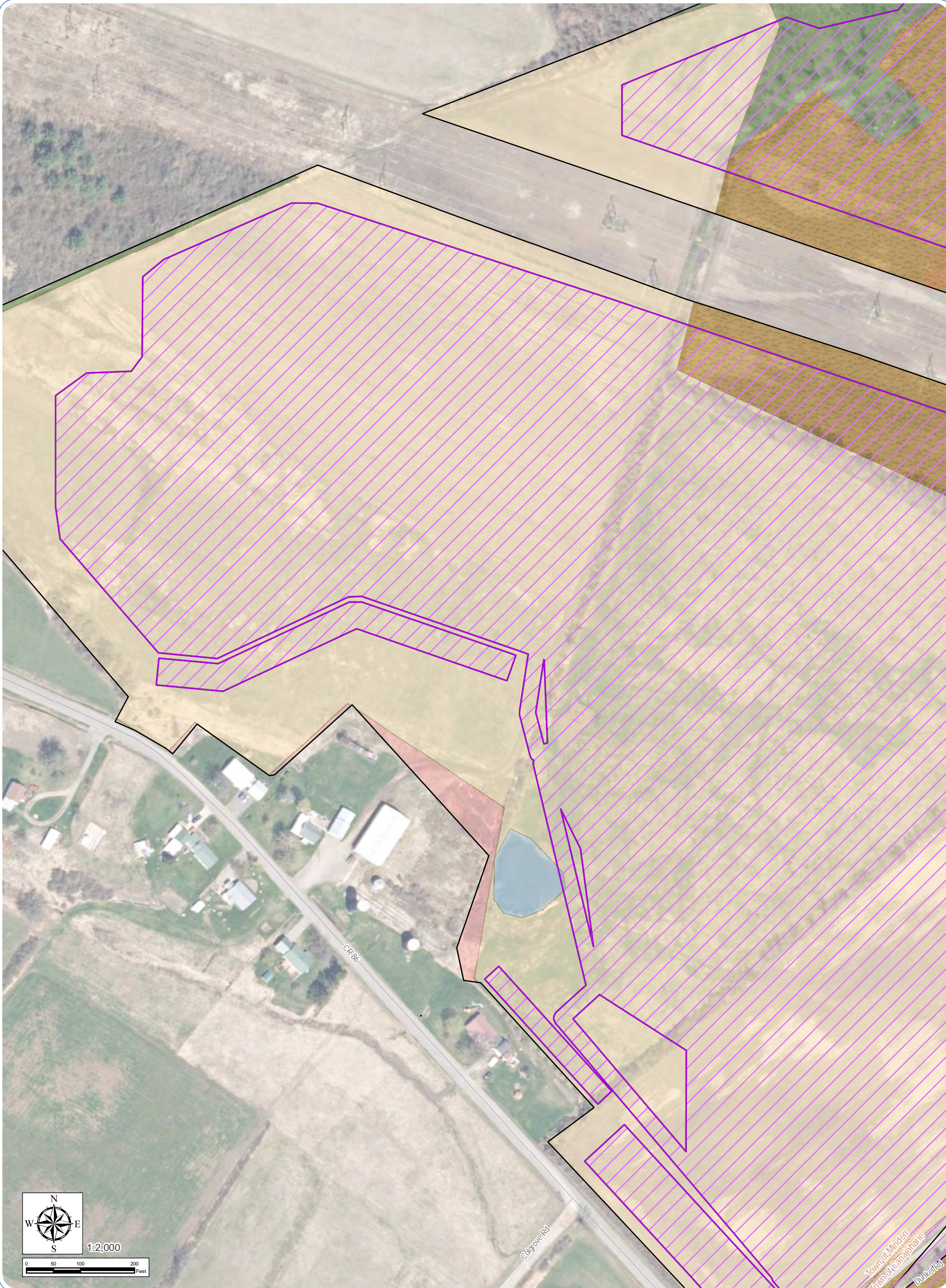


- Proposed Facility Components**
- Facility Site
 - Limit of Temporary Soil Disturbance / Vegetation Clearing

- Vegetative Community**
- Agricultural
 - Disturbed/Developed
 - Farm Pond
 - Successional Shrubland
 - Successional Old Field
 - Mixed Deciduous/Coniferous Forest

- Civil Boundaries**
- City/Village Boundary
 - Town Boundary
 - County Boundary





Mohawk Solar
Towns of Canajoharie and Minden,
Montgomery County, New York

Article 10 Application

Figure 22-1: Impact to Plant Communities

Notes: 1. Basemap: NYSDOP "2017" orthoimagery map service. 2. This map was generated in ArcMap by Environmental Design and Research on May 23, 2019. 3. This is a color graphic. Reproduction in grayscale may misrepresent the data. 4. While the scale of mapping depicted in the application may cause some project components or direct impacts to appear on adjacent non-participating parcels, all components will be sited during final design to only be located on or directly impact parcels or portions of parcels which are controlled by the applicant.



Sheet 8 of 37

Proposed Facility Components

- Facility Site
- Limit of Temporary Soil Disturbance / Vegetation Clearing

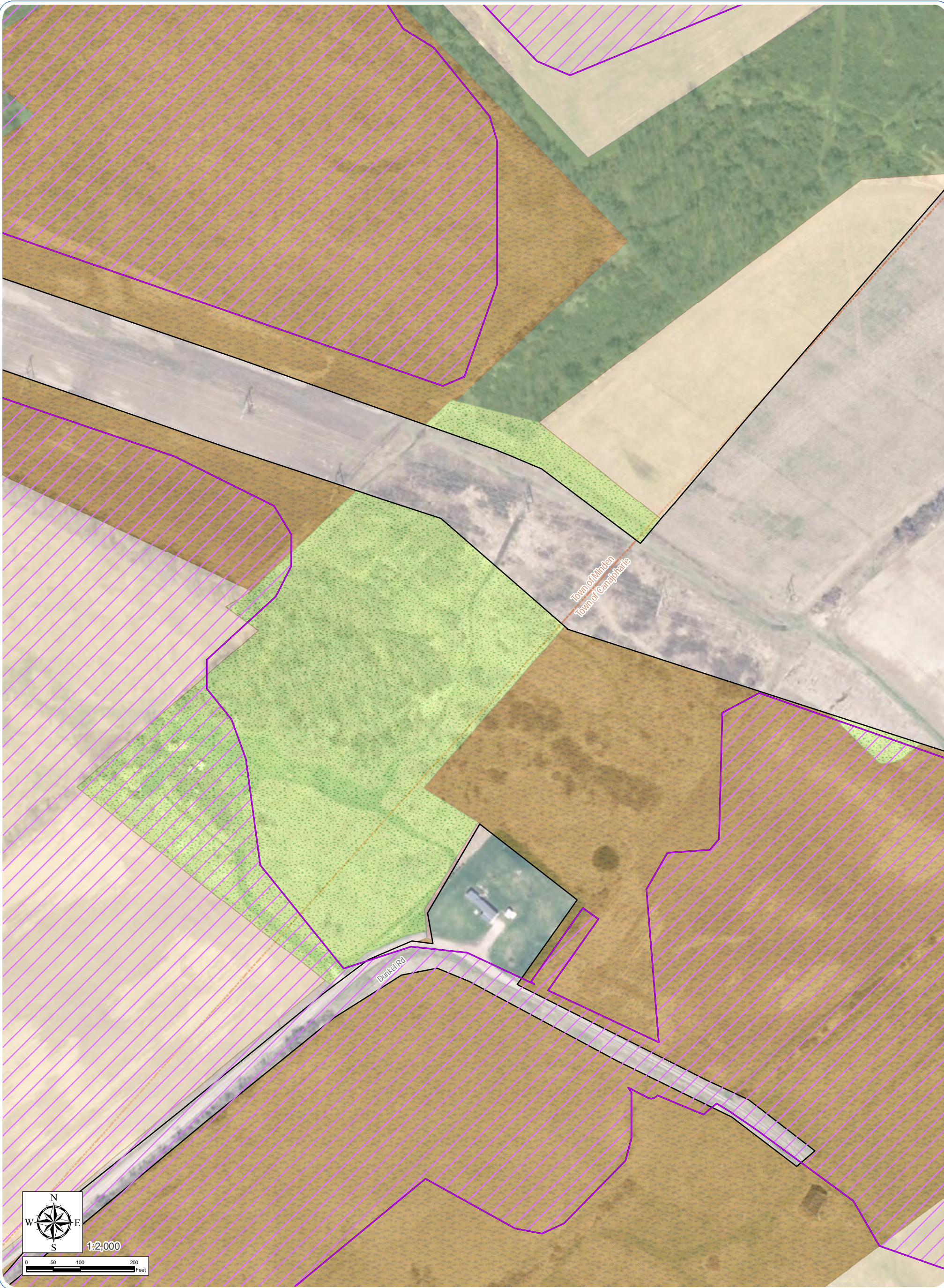
Vegetative Community

- Agricultural
- Disturbed/Developed
- Farm Pond
- Successional Shrubland
- Successional Old Field
- Mixed Deciduous/Coniferous Forest

Civil Boundaries

- City/Village Boundary
- Town Boundary
- County Boundary





Mohawk Solar
Towns of Canajoharie and Minden,
Montgomery County, New York

Article 10 Application

Figure 22-1: Impact to Plant Communities

Notes: 1. Basemap: NYSDOP "2017" orthoimagery map service. 2. This map was generated in ArcMap by Environmental Design and Research on May 23, 2019. 3. This is a color graphic. Reproduction in grayscale may misrepresent the data. 4. While the scale of mapping depicted in the application may cause some project components or direct impacts to appear on adjacent non-participating parcels, all components will be sited during final design to only be located on or directly impact parcels or portions of parcels which are controlled by the applicant.



- Proposed Facility Components**
- Facility Site
 - Limit of Temporary Soil Disturbance / Vegetation Clearing

- Vegetative Community**
- Agricultural
 - Disturbed/Developed
 - Farm Pond
 - Successional Shrubland
 - Successional Old Field
 - Mixed Deciduous/Coniferous Forest

- Civil Boundaries**
- City/Village Boundary
 - Town Boundary
 - County Boundary



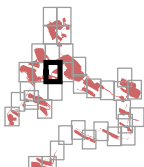


Mohawk Solar
Towns of Canajoharie and Minden,
Montgomery County, New York

Article 10 Application

Figure 22-1: Impact to Plant Communities

Notes: 1. Basemap: NYSDOP "2017" orthoimagery map service. 2. This map was generated in ArcMap by Environmental Design and Research on May 23, 2019. 3. This is a color graphic. Reproduction in grayscale may misrepresent the data. 4. While the scale of mapping depicted in the application may cause some project components or direct impacts to appear on adjacent non-participating parcels, all components will be sited during final design to only be located on or directly impact parcels or portions of parcels which are controlled by the applicant.



Sheet 10 of 37

Proposed Facility Components

- Facility Site
- Limit of Temporary Soil Disturbance / Vegetation Clearing

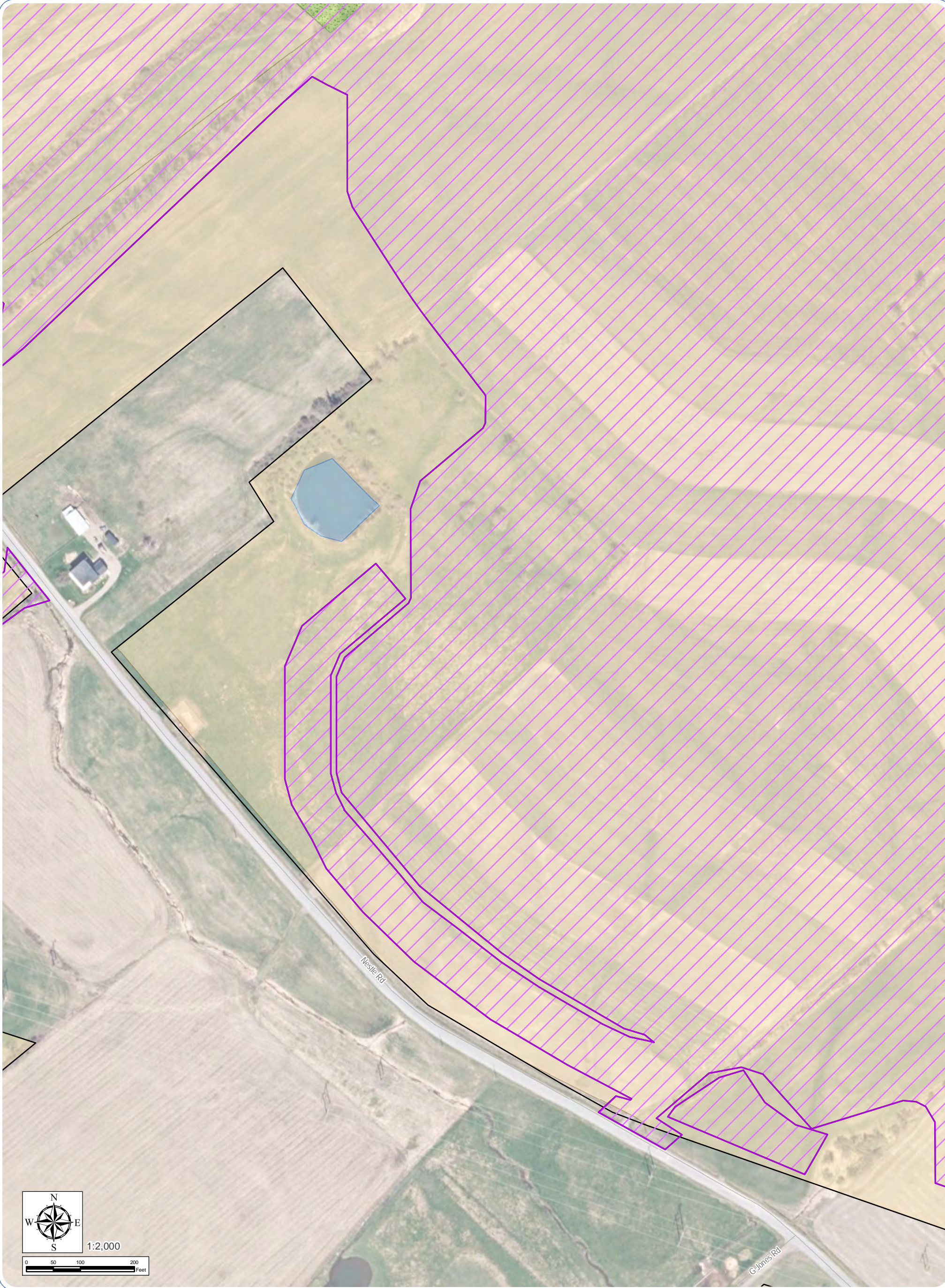
Vegetative Community

- Agricultural
- Disturbed/Developed
- Farm Pond
- Successional Shrubland
- Successional Old Field
- Mixed Deciduous/Coniferous Forest

Civil Boundaries

- City/Village Boundary
- Town Boundary
- County Boundary



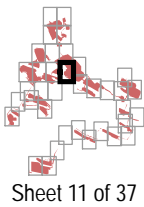


Mohawk Solar
Towns of Canajoharie and Minden,
Montgomery County, New York

Article 10 Application

Figure 22-1: Impact to Plant Communities

Notes: 1. Basemap: NYSDOP "2017" orthoimagery map service. 2. This map was generated in ArcMap by Environmental Design and Research on May 23, 2019. 3. This is a color graphic. Reproduction in grayscale may misrepresent the data. 4. While the scale of mapping depicted in the application may cause some project components or direct impacts to appear on adjacent non-participating parcels, all components will be sited during final design to only be located on or directly impact parcels or portions of parcels which are controlled by the applicant.



Proposed Facility Components

- Facility Site
- Limit of Temporary Soil Disturbance / Vegetation Clearing

Vegetative Community

- Agricultural
- Disturbed/Developed
- Farm Pond
- Successional Shrubland
- Successional Old Field
- Mixed Deciduous/Coniferous Forest

Civil Boundaries

- City/Village Boundary
- Town Boundary
- County Boundary





Mohawk Solar
Towns of Canajoharie and Minden,
Montgomery County, New York

Article 10 Application

Figure 22-1: Impact to Plant Communities

Notes: 1. Basemap: NYSDOP "2017" orthoimagery map service. 2. This map was generated in ArcMap by Environmental Design and Research on May 23, 2019. 3. This is a color graphic. Reproduction in grayscale may misrepresent the data. 4. While the scale of mapping depicted in the application may cause some project components or direct impacts to appear on adjacent non-participating parcels, all components will be sited during final design to only be located on or directly impact parcels or portions of parcels which are controlled by the applicant.



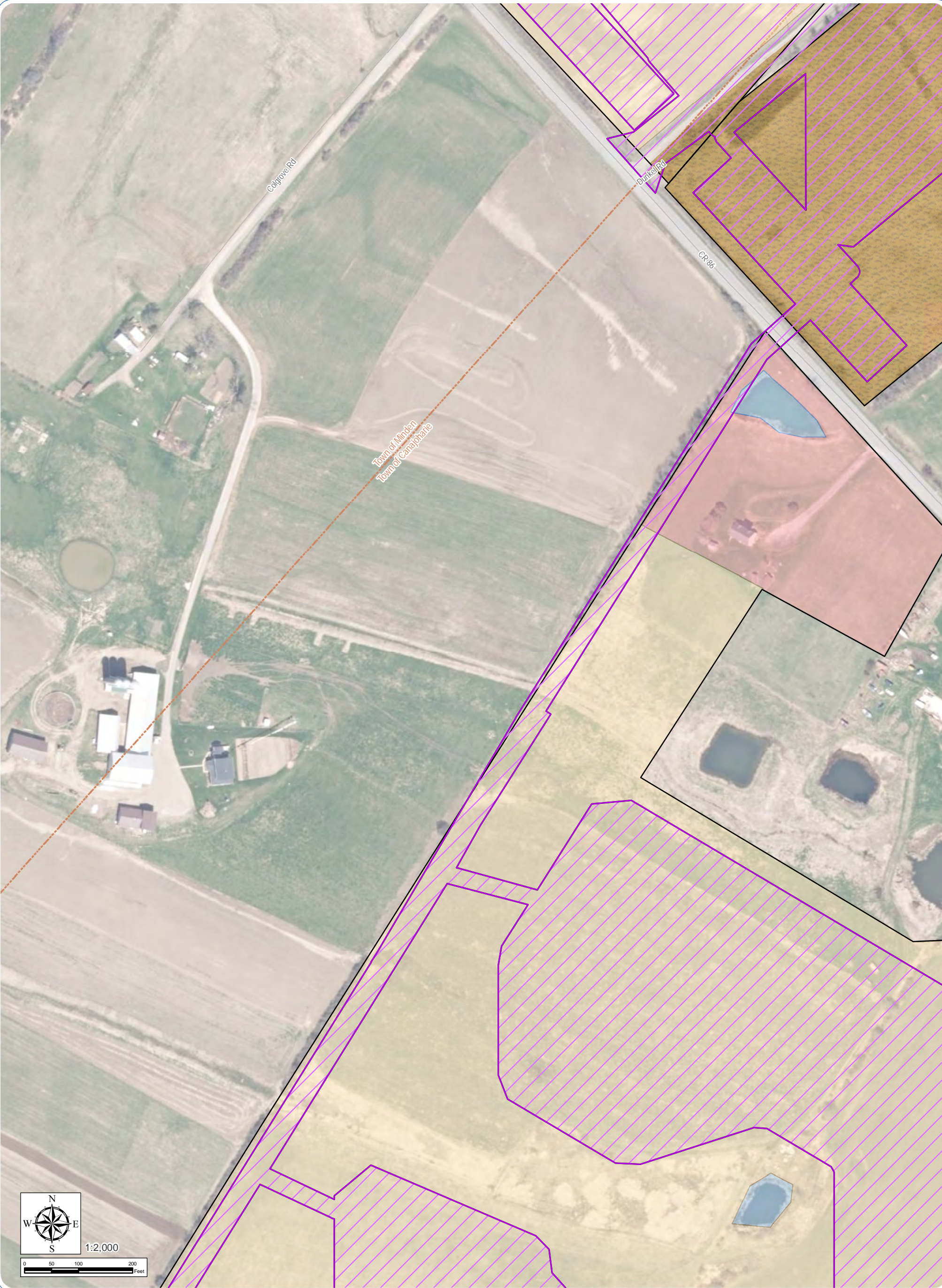
Sheet 12 of 37

- Proposed Facility Components**
- Facility Site
 - Limit of Temporary Soil Disturbance / Vegetation Clearing

- Vegetative Community**
- Agricultural
 - Disturbed/Developed
 - Farm Pond
 - Successional Shrubland
 - Successional Old Field
 - Mixed Deciduous/Coniferous Forest

- Civil Boundaries**
- City/Village Boundary
 - Town Boundary
 - County Boundary



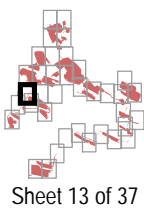


Mohawk Solar
Towns of Canajoharie and Minden,
Montgomery County, New York

Article 10 Application

Figure 22-1: Impact to Plant Communities

Notes: 1. Basemap: NYSDOP "2017" orthoimagery map service. 2. This map was generated in ArcMap by Environmental Design and Research on May 23, 2019. 3. This is a color graphic. Reproduction in grayscale may misrepresent the data. 4. While the scale of mapping depicted in the application may cause some project components or direct impacts to appear on adjacent non-participating parcels, all components will be sited during final design to only be located on or directly impact parcels or portions of parcels which are controlled by the applicant.



Sheet 13 of 37

Proposed Facility Components

- Facility Site
- Limit of Temporary Soil Disturbance / Vegetation Clearing

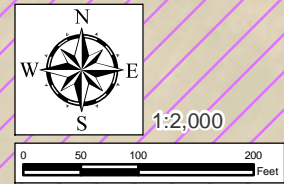
Vegetative Community

- Agricultural
- Disturbed/Developed
- Farm Pond
- Successional Shrubland
- Successional Old Field
- Mixed Deciduous/Coniferous Forest

Civil Boundaries

- City/Village Boundary
- Town Boundary
- County Boundary





Mohawk Solar

Towns of Canajoharie and Minden,
Montgomery County, New York

Article 10 Application

Figure 22-1: Impact to Plant Communities

Notes: 1. Basemap: NYSDOP "2017" orthoimagery map service. 2. This map was generated in ArcMap by Environmental Design and Research on May 23, 2019. 3. This is a color graphic. Reproduction in grayscale may misrepresent the data. 4. While the scale of mapping depicted in the application may cause some project components or direct impacts to appear on adjacent non-participating parcels, all components will be sited during final design to only be located on or directly impact parcels or portions of parcels which are controlled by the applicant.



Sheet 14 of 37

- Proposed Facility Components**
- Facility Site
 - Limit of Temporary Soil Disturbance / Vegetation Clearing

- Vegetative Community**
- Agricultural
 - Disturbed/Developed
 - Farm Pond
 - Successional Shrubland
 - Successional Old Field
 - Mixed Deciduous/Coniferous Forest

- Civil Boundaries**
- City/Village Boundary
 - Town Boundary
 - County Boundary





Mohawk Solar

Towns of Canajoharie and Minden,
Montgomery County, New York

Article 10 Application

Figure 22-1: Impact to Plant Communities

Notes: 1. Basemap: NYSDOP "2017" orthoimagery map service. 2. This map was generated in ArcMap by Environmental Design and Research on May 23, 2019. 3. This is a color graphic. Reproduction in grayscale may misrepresent the data. 4. While the scale of mapping depicted in the application may cause some project components or direct impacts to appear on adjacent non-participating parcels, all components will be sited during final design to only be located on or directly impact parcels or portions of parcels which are controlled by the applicant.



Sheet 15 of 37

Proposed Facility Components

- Facility Site
- Limit of Temporary Soil Disturbance / Vegetation Clearing

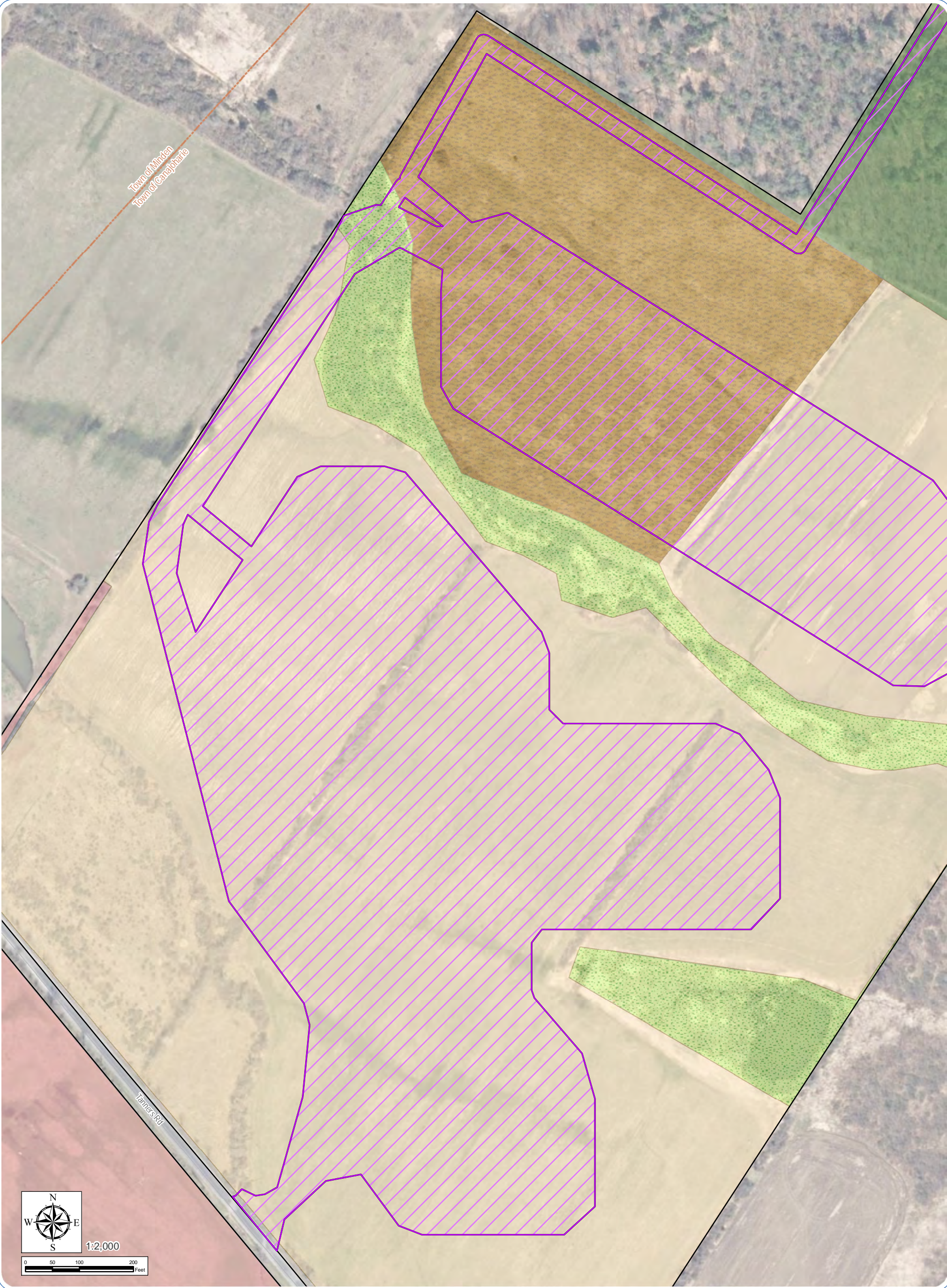
Vegetative Community

- Agricultural
- Disturbed/Developed
- Farm Pond
- Successional Shrubland
- Successional Old Field
- Mixed Deciduous/Coniferous Forest

Civil Boundaries

- City/Village Boundary
- Town Boundary
- County Boundary





Mohawk Solar
Towns of Canajoharie and Minden,
Montgomery County, New York

Article 10 Application

Figure 22-1: Impact to Plant Communities

Notes: 1. Basemap: NYSDOP "2017" orthoimagery map service. 2. This map was generated in ArcMap by Environmental Design and Research on May 23, 2019. 3. This is a color graphic. Reproduction in grayscale may misrepresent the data. 4. While the scale of mapping depicted in the application may cause some project components or direct impacts to appear on adjacent non-participating parcels, all components will be sited during final design to only be located on or directly impact parcels or portions of parcels which are controlled by the applicant.



- Proposed Facility Components**
- Facility Site
 - Limit of Temporary Soil Disturbance / Vegetation Clearing

- Vegetative Community**
- Agricultural
 - Disturbed/Developed
 - Farm Pond
 - Successional Shrubland
 - Successional Old Field
 - Mixed Deciduous/Coniferous Forest

- Civil Boundaries**
- City/Village Boundary
 - Town Boundary
 - County Boundary





Mohawk Solar
Towns of Canajoharie and Minden,
Montgomery County, New York

Article 10 Application

Figure 22-1: Impact to Plant Communities

Notes: 1. Basemap: NYSDOP "2017" orthoimagery map service. 2. This map was generated in ArcMap by Environmental Design and Research on May 23, 2019. 3. This is a color graphic. Reproduction in grayscale may misrepresent the data. 4. While the scale of mapping depicted in the application may cause some project components or direct impacts to appear on adjacent non-participating parcels, all components will be sited during final design to only be located on or directly impact parcels or portions of parcels which are controlled by the applicant.



- Proposed Facility Components**
- Facility Site
 - Limit of Temporary Soil Disturbance / Vegetation Clearing

- Vegetative Community**
- Agricultural
 - Disturbed/Developed
 - Farm Pond
 - Successional Shrubland
 - Successional Old Field
 - Mixed Deciduous/Coniferous Forest

- Civil Boundaries**
- City/Village Boundary
 - Town Boundary
 - County Boundary





Mohawk Solar
Towns of Canajoharie and Minden,
Montgomery County, New York

Article 10 Application

Figure 22-1: Impact to Plant Communities

Notes: 1. Basemap: NYSDOP "2017" orthoimagery map service. 2. This map was generated in ArcMap by Environmental Design and Research on May 23, 2019. 3. This is a color graphic. Reproduction in grayscale may misrepresent the data. 4. While the scale of mapping depicted in the application may cause some project components or direct impacts to appear on adjacent non-participating parcels, all components will be sited during final design to only be located on or directly impact parcels or portions of parcels which are controlled by the applicant.

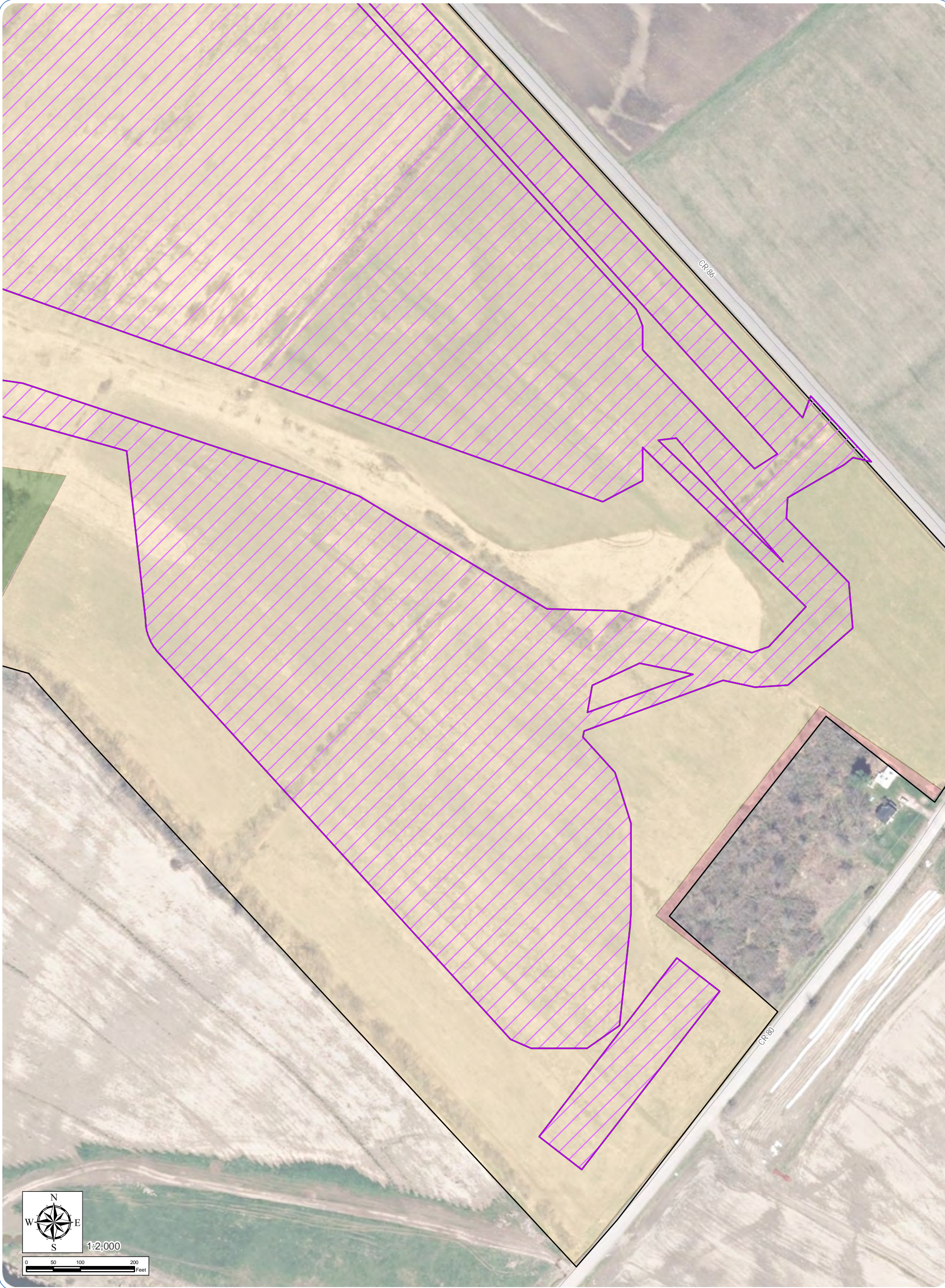


- Proposed Facility Components**
- Facility Site
 - Limit of Temporary Soil Disturbance / Vegetation Clearing

- Vegetative Community**
- Agricultural
 - Disturbed/Developed
 - Farm Pond
 - Successional Shrubland
 - Successional Old Field
 - Mixed Deciduous/Coniferous Forest

- Civil Boundaries**
- City/Village Boundary
 - Town Boundary
 - County Boundary



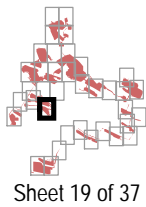


Mohawk Solar
Towns of Canajoharie and Minden,
Montgomery County, New York

Article 10 Application

Figure 22-1: Impact to Plant Communities

Notes: 1. Basemap: NYSDOP "2017" orthoimagery map service. 2. This map was generated in ArcMap by Environmental Design and Research on May 23, 2019. 3. This is a color graphic. Reproduction in grayscale may misrepresent the data. 4. While the scale of mapping depicted in the application may cause some project components or direct impacts to appear on adjacent non-participating parcels, all components will be sited during final design to only be located on or directly impact parcels or portions of parcels which are controlled by the applicant.

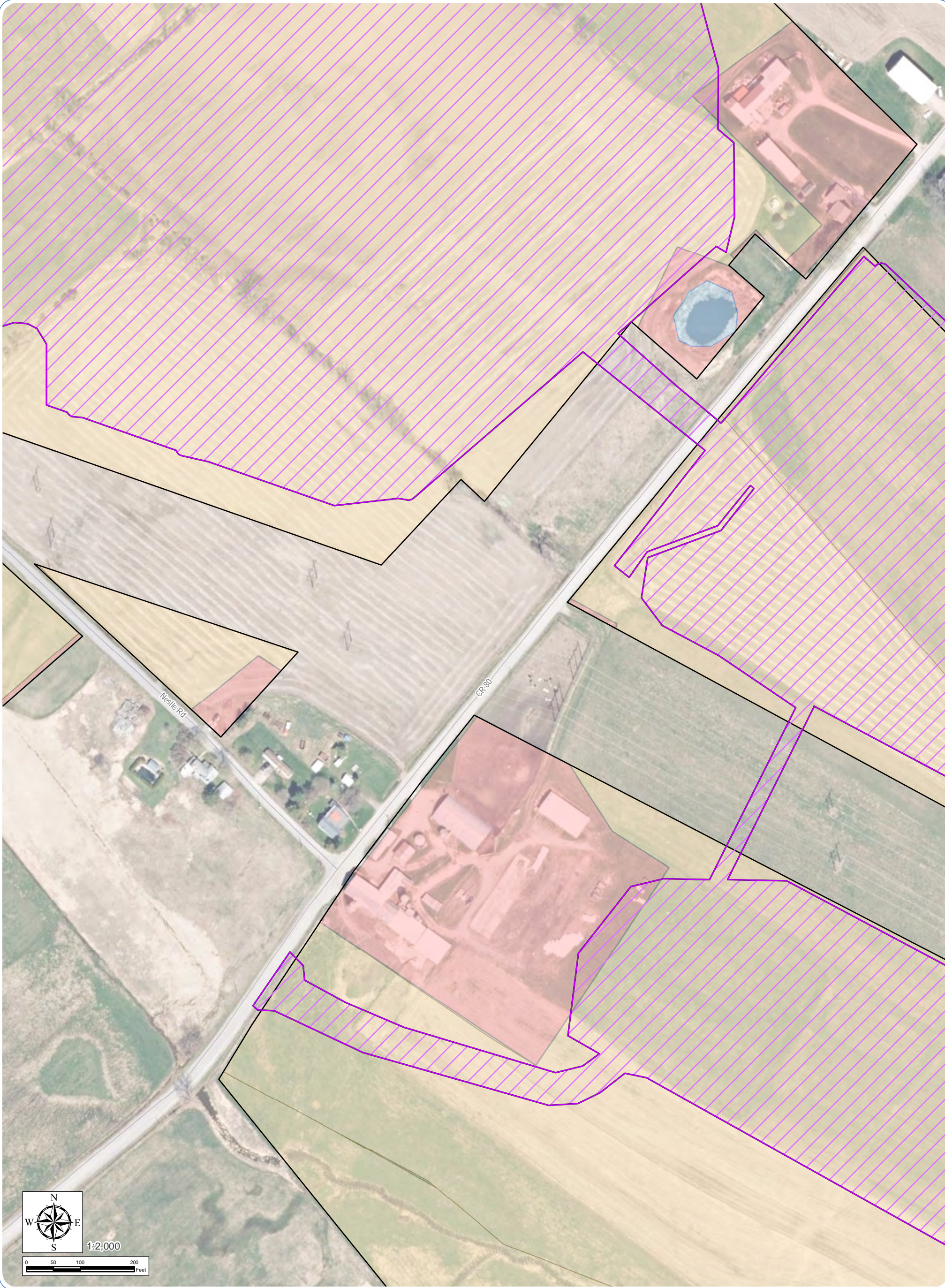


- Proposed Facility Components**
- Facility Site
 - Limit of Temporary Soil Disturbance / Vegetation Clearing

- Vegetative Community**
- Agricultural
 - Disturbed/Developed
 - Farm Pond
 - Successional Shrubland
 - Successional Old Field
 - Mixed Deciduous/Coniferous Forest

- Civil Boundaries**
- City/Village Boundary
 - Town Boundary
 - County Boundary





Mohawk Solar
Towns of Canajoharie and Minden,
Montgomery County, New York

Article 10 Application

Figure 22-1: Impact to Plant Communities

Notes: 1. Basemap: NYSDOP "2017" orthoimagery map service. 2. This map was generated in ArcMap by Environmental Design and Research on May 23, 2019. 3. This is a color graphic. Reproduction in grayscale may misrepresent the data. 4. While the scale of mapping depicted in the application may cause some project components or direct impacts to appear on adjacent non-participating parcels, all components will be sited during final design to only be located on or directly impact parcels or portions of parcels which are controlled by the applicant.

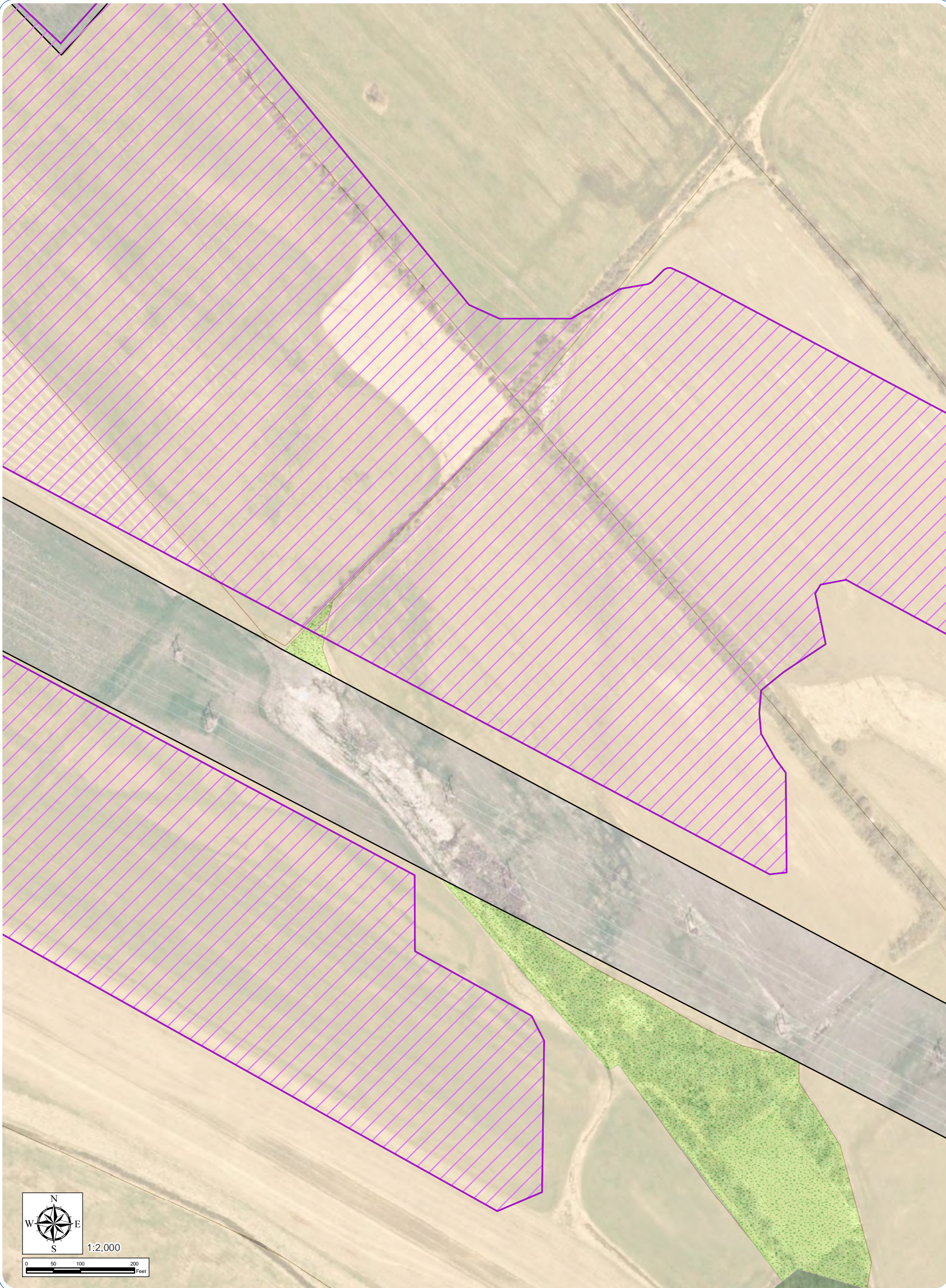


- Proposed Facility Components**
- Facility Site
 - Limit of Temporary Soil Disturbance / Vegetation Clearing

- Vegetative Community**
- Agricultural
 - Disturbed/Developed
 - Farm Pond
 - Successional Shrubland
 - Successional Old Field
 - Mixed Deciduous/Coniferous Forest

- Civil Boundaries**
- City/Village Boundary
 - Town Boundary
 - County Boundary





Mohawk Solar
Towns of Canajoharie and Minden,
Montgomery County, New York

Article 10 Application

Figure 22-1: Impact to Plant Communities

Notes: 1. Basemap: NYSDOP "2017" orthoimagery map service. 2. This map was generated in ArcMap by Environmental Design and Research on May 23, 2019. 3. This is a color graphic. Reproduction in grayscale may misrepresent the data. 4. While the scale of mapping depicted in the application may cause some project components or direct impacts to appear on adjacent non-participating parcels, all components will be sited during final design to only be located on or directly impact parcels or portions of parcels which are controlled by the applicant.



Proposed Facility Components

- Facility Site
- Limit of Temporary Soil Disturbance / Vegetation Clearing

Vegetative Community

- Agricultural
- Disturbed/Developed
- Farm Pond
- Successional Shrubland
- Successional Old Field
- Mixed Deciduous/Coniferous Forest

Civil Boundaries

- City/Village Boundary
- Town Boundary
- County Boundary





Mohawk Solar

Towns of Canajoharie and Minden,
Montgomery County, New York

Article 10 Application

Figure 22-1: Impact to Plant Communities

Notes: 1. Basemap: NYSDOP "2017" orthoimagery map service. 2. This map was generated in ArcMap by Environmental Design and Research on May 23, 2019. 3. This is a color graphic. Reproduction in grayscale may misrepresent the data. 4. While the scale of mapping depicted in the application may cause some project components or direct impacts to appear on adjacent non-participating parcels, all components will be sited during final design to only be located on or directly impact parcels or portions of parcels which are controlled by the applicant.



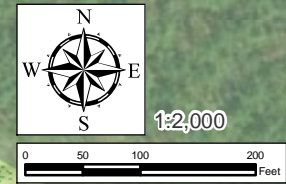
Sheet 22 of 37

- Proposed Facility Components**
- Facility Site
 - Limit of Temporary Soil Disturbance / Vegetation Clearing

- Vegetative Community**
- Agricultural
 - Disturbed/Developed
 - Farm Pond
 - Successional Shrubland
 - Successional Old Field
 - Mixed Deciduous/Coniferous Forest

- Civil Boundaries**
- City/Village Boundary
 - Town Boundary
 - County Boundary





Mohawk Solar

Towns of Canajoharie and Minden,
Montgomery County, New York

Article 10 Application

Figure 22-1: Impact to Plant Communities

Notes: 1. Basemap: NYSDOP "2017" orthoimagery map service. 2. This map was generated in ArcMap by Environmental Design and Research on May 23, 2019. 3. This is a color graphic. Reproduction in grayscale may misrepresent the data. 4. While the scale of mapping depicted in the application may cause some project components or direct impacts to appear on adjacent non-participating parcels, all components will be sited during final design to only be located on or directly impact parcels or portions of parcels which are controlled by the applicant.

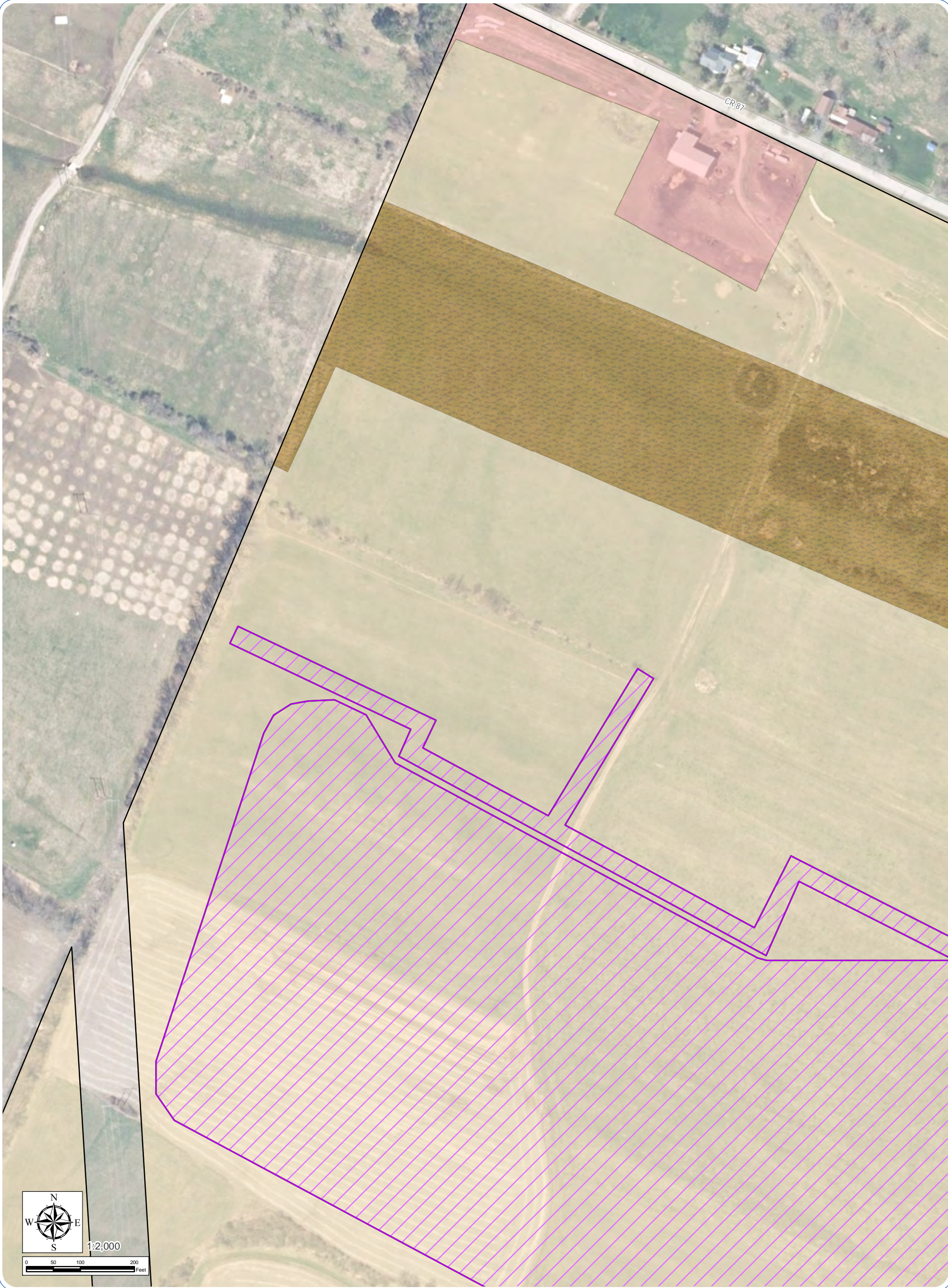


- Proposed Facility Components**
- Facility Site
 - Limit of Temporary Soil Disturbance / Vegetation Clearing

- Vegetative Community**
- Agricultural
 - Disturbed/Developed
 - Farm Pond
 - Successional Shrubland
 - Successional Old Field
 - Mixed Deciduous/Coniferous Forest

- Civil Boundaries**
- City/Village Boundary
 - Town Boundary
 - County Boundary





Mohawk Solar
Towns of Canajoharie and Minden,
Montgomery County, New York

Article 10 Application

Figure 22-1: Impact to Plant Communities

Notes: 1. Basemap: NYSDOP "2017" orthoimagery map service. 2. This map was generated in ArcMap by Environmental Design and Research on May 23, 2019. 3. This is a color graphic. Reproduction in grayscale may misrepresent the data. 4. While the scale of mapping depicted in the application may cause some project components or direct impacts to appear on adjacent non-participating parcels, all components will be sited during final design to only be located on or directly impact parcels or portions of parcels which are controlled by the applicant.

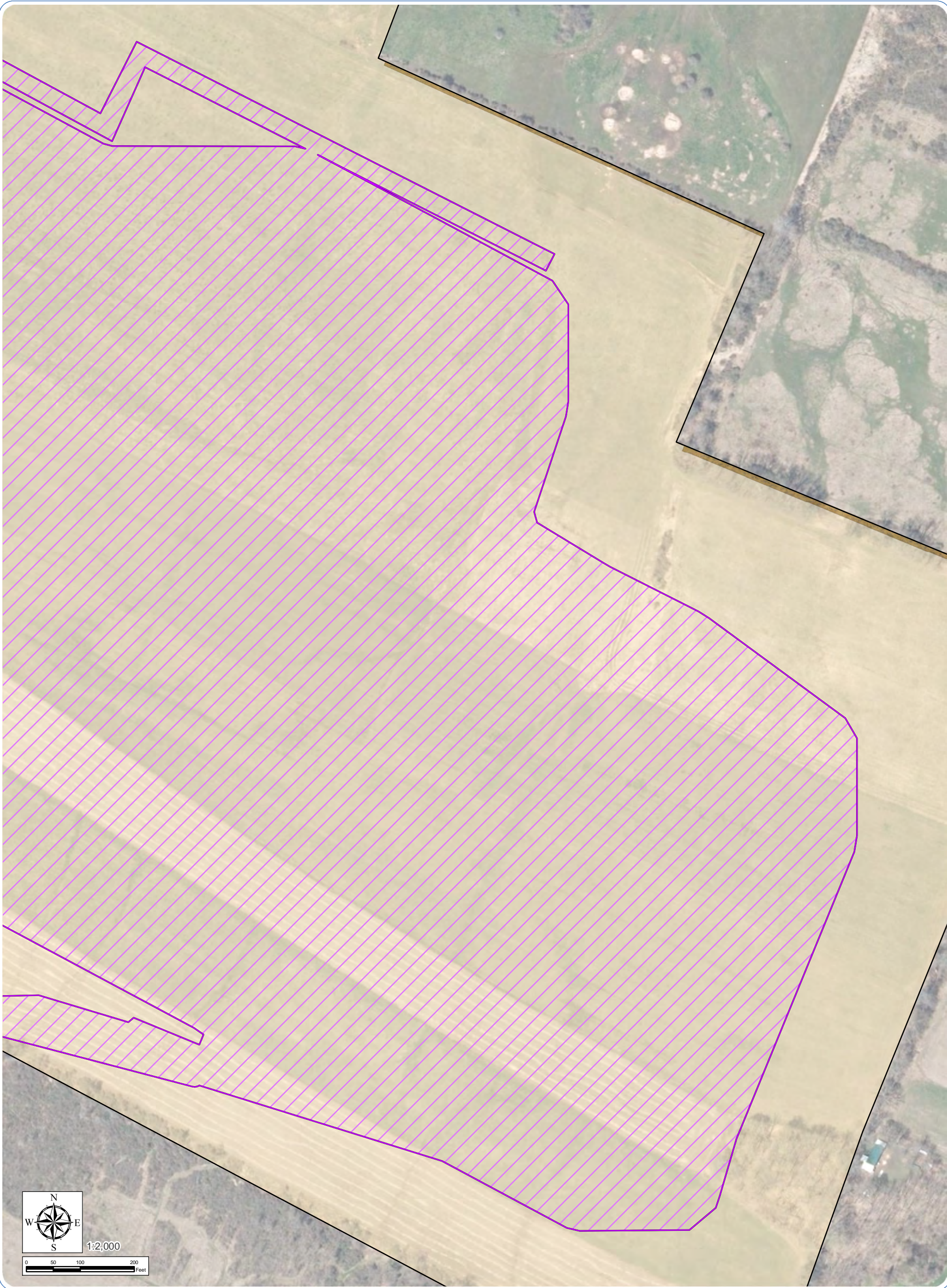


- Proposed Facility Components**
- Facility Site
 - Limit of Temporary Soil Disturbance / Vegetation Clearing

- Vegetative Community**
- Agricultural
 - Disturbed/Developed
 - Farm Pond
 - Successional Shrubland
 - Successional Old Field
 - Mixed Deciduous/Coniferous Forest

- Civil Boundaries**
- City/Village Boundary
 - Town Boundary
 - County Boundary





Mohawk Solar
Towns of Canajoharie and Minden,
Montgomery County, New York

Article 10 Application

Figure 22-1: Impact to Plant Communities

Notes: 1. Basemap: NYSDOP "2017" orthoimagery map service. 2. This map was generated in ArcMap by Environmental Design and Research on May 23, 2019. 3. This is a color graphic. Reproduction in grayscale may misrepresent the data. 4. While the scale of mapping depicted in the application may cause some project components or direct impacts to appear on adjacent non-participating parcels, all components will be sited during final design to only be located on or directly impact parcels or portions of parcels which are controlled by the applicant.



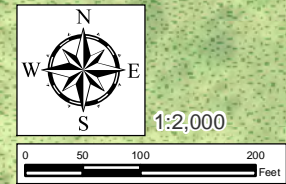
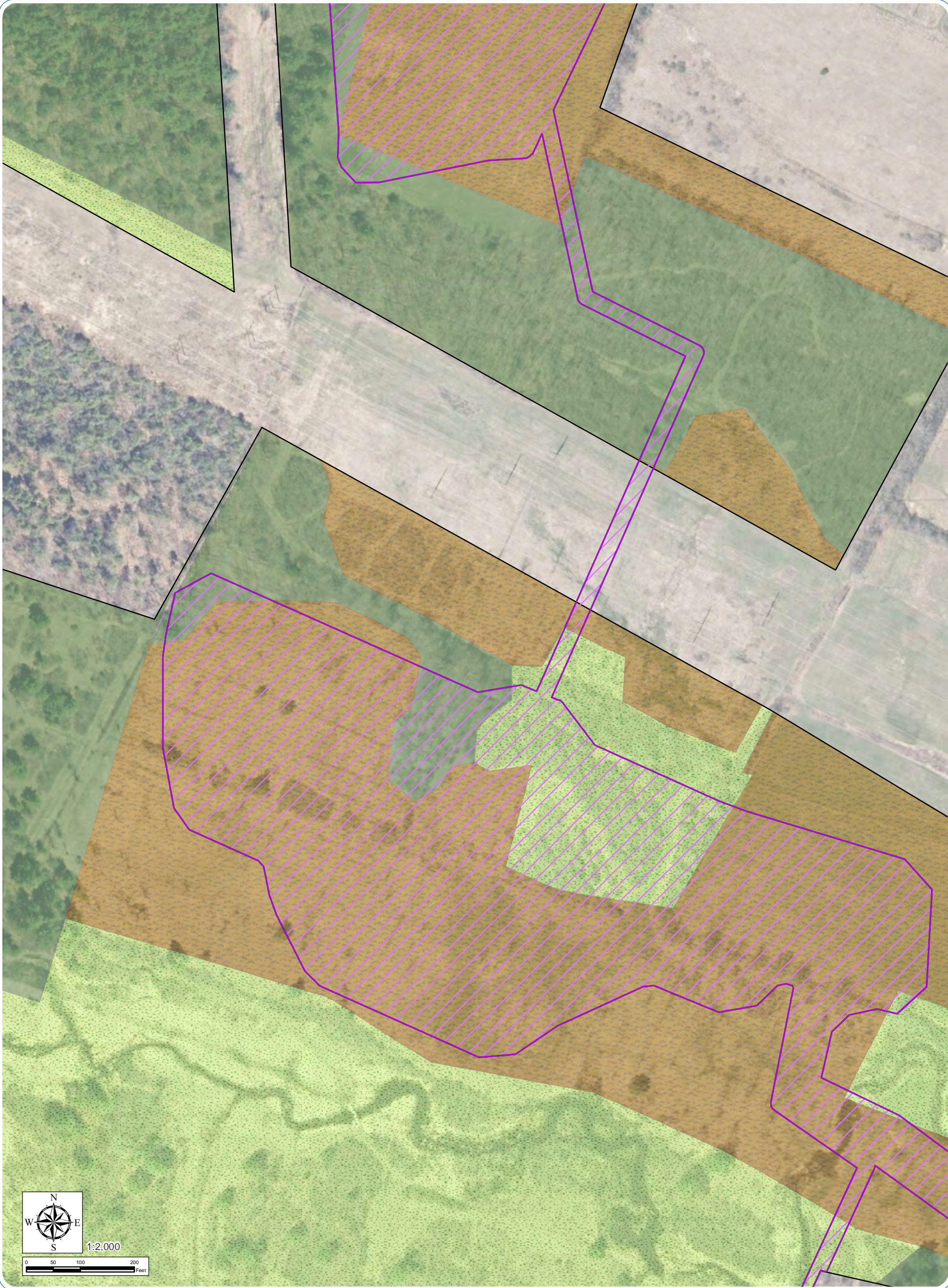
Sheet 25 of 37

- Proposed Facility Components**
- Facility Site
 - Limit of Temporary Soil Disturbance / Vegetation Clearing

- Vegetative Community**
- Agricultural
 - Disturbed/Developed
 - Farm Pond
 - Successional Shrubland
 - Successional Old Field
 - Mixed Deciduous/Coniferous Forest

- Civil Boundaries**
- City/Village Boundary
 - Town Boundary
 - County Boundary





Mohawk Solar

Towns of Canajoharie and Minden,
Montgomery County, New York

Article 10 Application

Figure 22-1: Impact to Plant Communities

Notes: 1. Basemap: NYSDOP "2017" orthoimagery map service. 2. This map was generated in ArcMap by Environmental Design and Research on May 23, 2019. 3. This is a color graphic. Reproduction in grayscale may misrepresent the data. 4. While the scale of mapping depicted in the application may cause some project components or direct impacts to appear on adjacent non-participating parcels, all components will be sited during final design to only be located on or directly impact parcels or portions of parcels which are controlled by the applicant.



Sheet 26 of 37

Proposed Facility Components

- Facility Site
- Limit of Temporary Soil Disturbance / Vegetation Clearing

Vegetative Community

- Agricultural
- Disturbed/Developed
- Farm Pond
- Successional Shrubland
- Successional Old Field
- Mixed Deciduous/Coniferous Forest

Civil Boundaries

- City/Village Boundary
- Town Boundary
- County Boundary





Mohawk Solar
Towns of Canajoharie and Minden,
Montgomery County, New York

Article 10 Application

Figure 22-1: Impact to Plant Communities

Notes: 1. Basemap: NYSDOP "2017" orthoimagery map service. 2. This map was generated in ArcMap by Environmental Design and Research on May 23, 2019. 3. This is a color graphic. Reproduction in grayscale may misrepresent the data. 4. While the scale of mapping depicted in the application may cause some project components or direct impacts to appear on adjacent non-participating parcels, all components will be sited during final design to only be located on or directly impact parcels or portions of parcels which are controlled by the applicant.

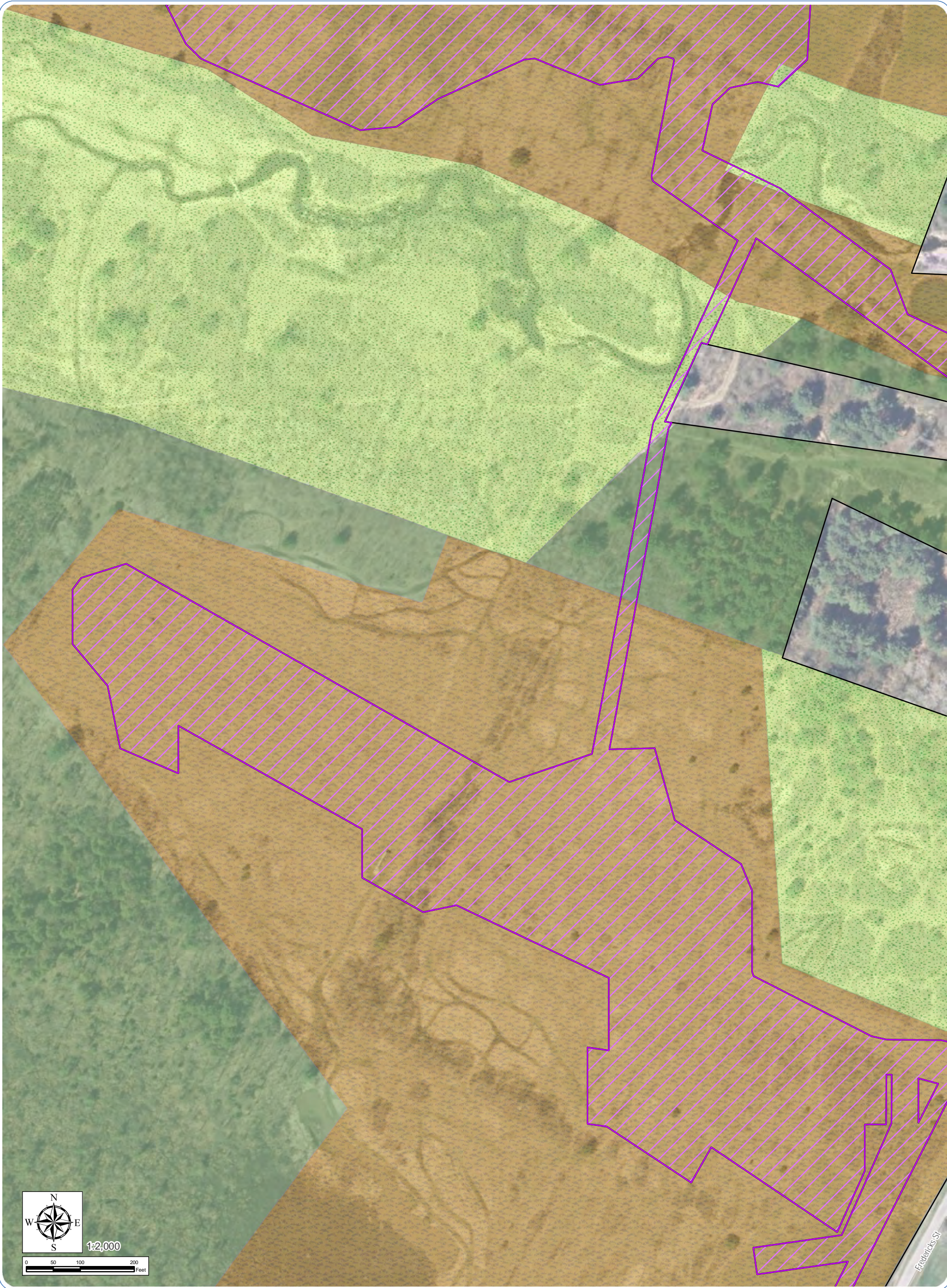


- Proposed Facility Components**
- Facility Site
 - Limit of Temporary Soil Disturbance / Vegetation Clearing

- Vegetative Community**
- Agricultural
 - Disturbed/Developed
 - Farm Pond
 - Successional Shrubland
 - Successional Old Field
 - Mixed Deciduous/Coniferous Forest

- Civil Boundaries**
- City/Village Boundary
 - Town Boundary
 - County Boundary





Mohawk Solar
Towns of Canajoharie and Minden,
Montgomery County, New York

Article 10 Application

Figure 22-1: Impact to Plant Communities

Notes: 1. Basemap: NYSDOP "2017" orthoimagery map service. 2. This map was generated in ArcMap by Environmental Design and Research on May 23, 2019. 3. This is a color graphic. Reproduction in grayscale may misrepresent the data. 4. While the scale of mapping depicted in the application may cause some project components or direct impacts to appear on adjacent non-participating parcels, all components will be sited during final design to only be located on or directly impact parcels or portions of parcels which are controlled by the applicant.



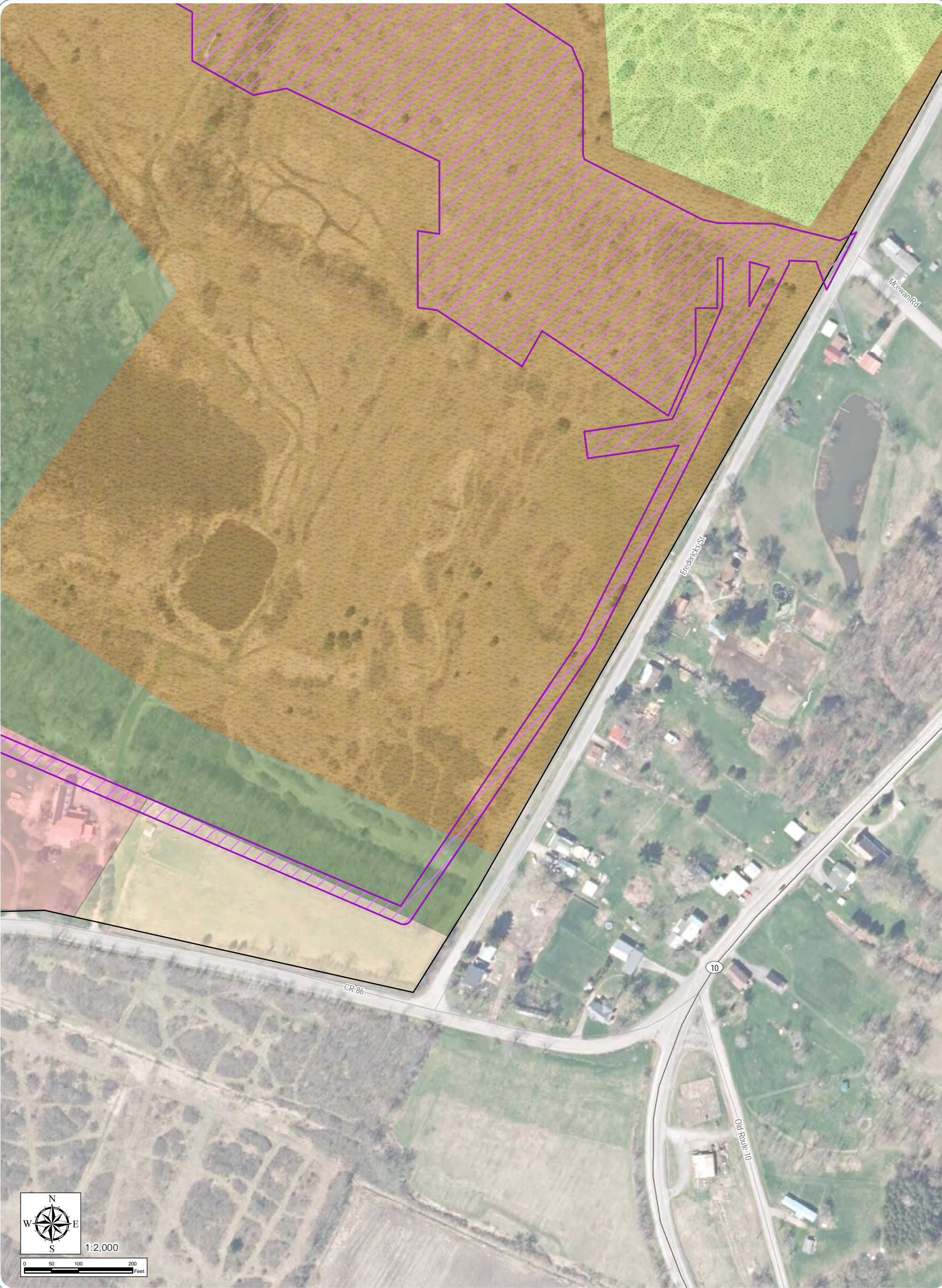
Sheet 28 of 37

- Proposed Facility Components**
- Facility Site
 - Limit of Temporary Soil Disturbance / Vegetation Clearing

- Vegetative Community**
- Agricultural
 - Disturbed/Developed
 - Farm Pond
 - Successional Shrubland
 - Successional Old Field
 - Mixed Deciduous/Coniferous Forest

- Civil Boundaries**
- City/Village Boundary
 - Town Boundary
 - County Boundary





Mohawk Solar
Towns of Canajoharie and Minden,
Montgomery County, New York

Article 10 Application

Figure 22-1: Impact to Plant Communities

Notes: 1. Basemap: NYSDOP "2017" orthoimagery map service. 2. This map was generated in ArcMap by Environmental Design and Research on May 23, 2019. 3. This is a color graphic. Reproduction in grayscale may misrepresent the data. 4. While the scale of mapping depicted in the application may cause some project components or direct impacts to appear on adjacent non-participating parcels, all components will be sited during final design to only be located on or directly impact parcels or portions of parcels which are controlled by the applicant.



Sheet 29 of 37

Proposed Facility Components

- Facility Site
- Limit of Temporary Soil Disturbance / Vegetation Clearing

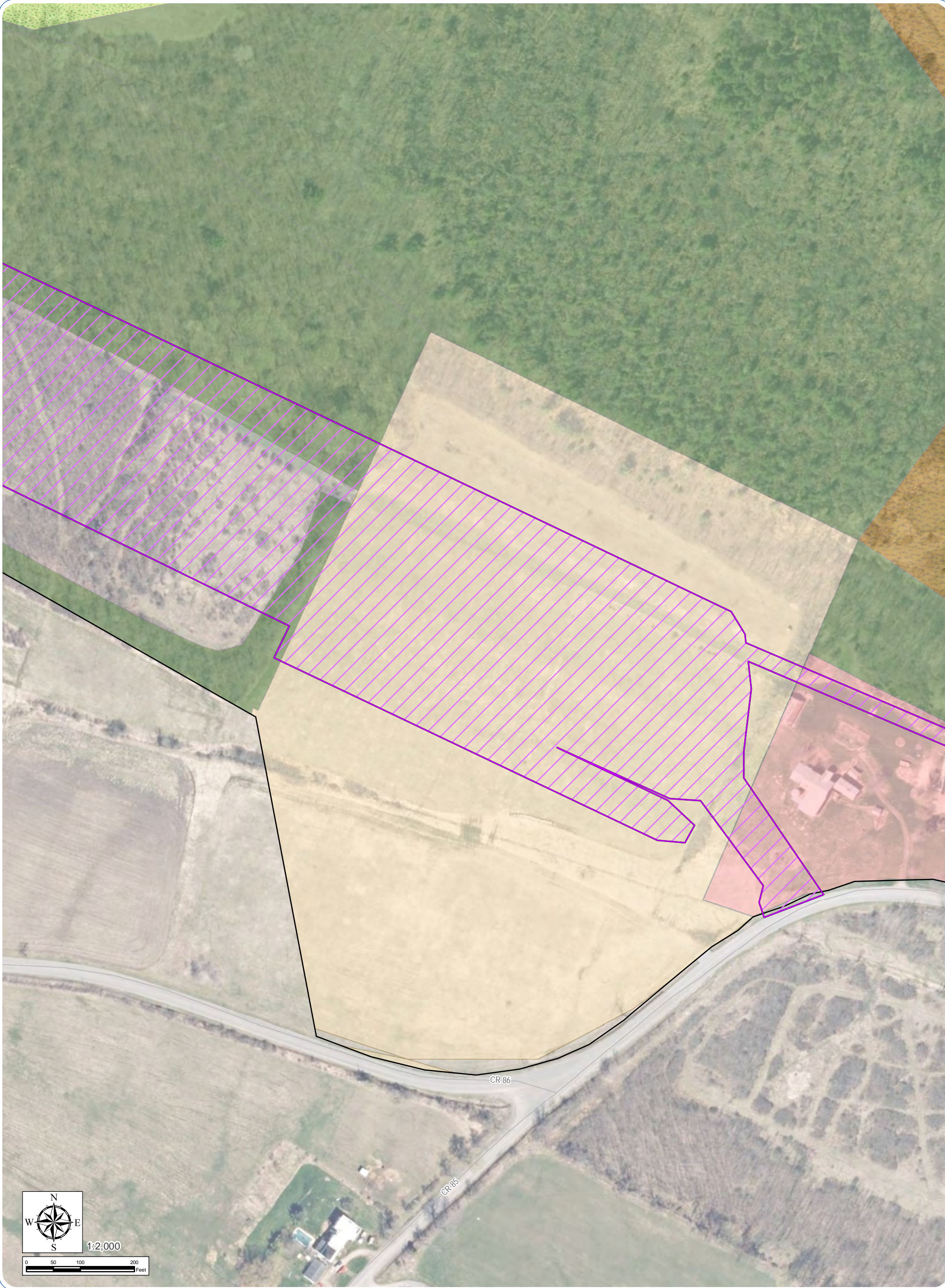
Vegetative Community

- Agricultural
- Disturbed/Developed
- Farm Pond
- Successional Shrubland
- Successional Old Field
- Mixed Deciduous/Coniferous Forest

Civil Boundaries

- City/Village Boundary
- Town Boundary
- County Boundary





Mohawk Solar

Towns of Canajoharie and Minden,
Montgomery County, New York

Article 10 Application

Figure 22-1: Impact to Plant Communities

Notes: 1. Basemap: NYSDOP "2017" orthoimagery map service. 2. This map was generated in ArcMap by Environmental Design and Research on May 23, 2019. 3. This is a color graphic. Reproduction in grayscale may misrepresent the data. 4. While the scale of mapping depicted in the application may cause some project components or direct impacts to appear on adjacent non-participating parcels, all components will be sited during final design to only be located on or directly impact parcels or portions of parcels which are controlled by the applicant.



Sheet 30 of 37

Proposed Facility Components

- Facility Site
- Limit of Temporary Soil Disturbance / Vegetation Clearing

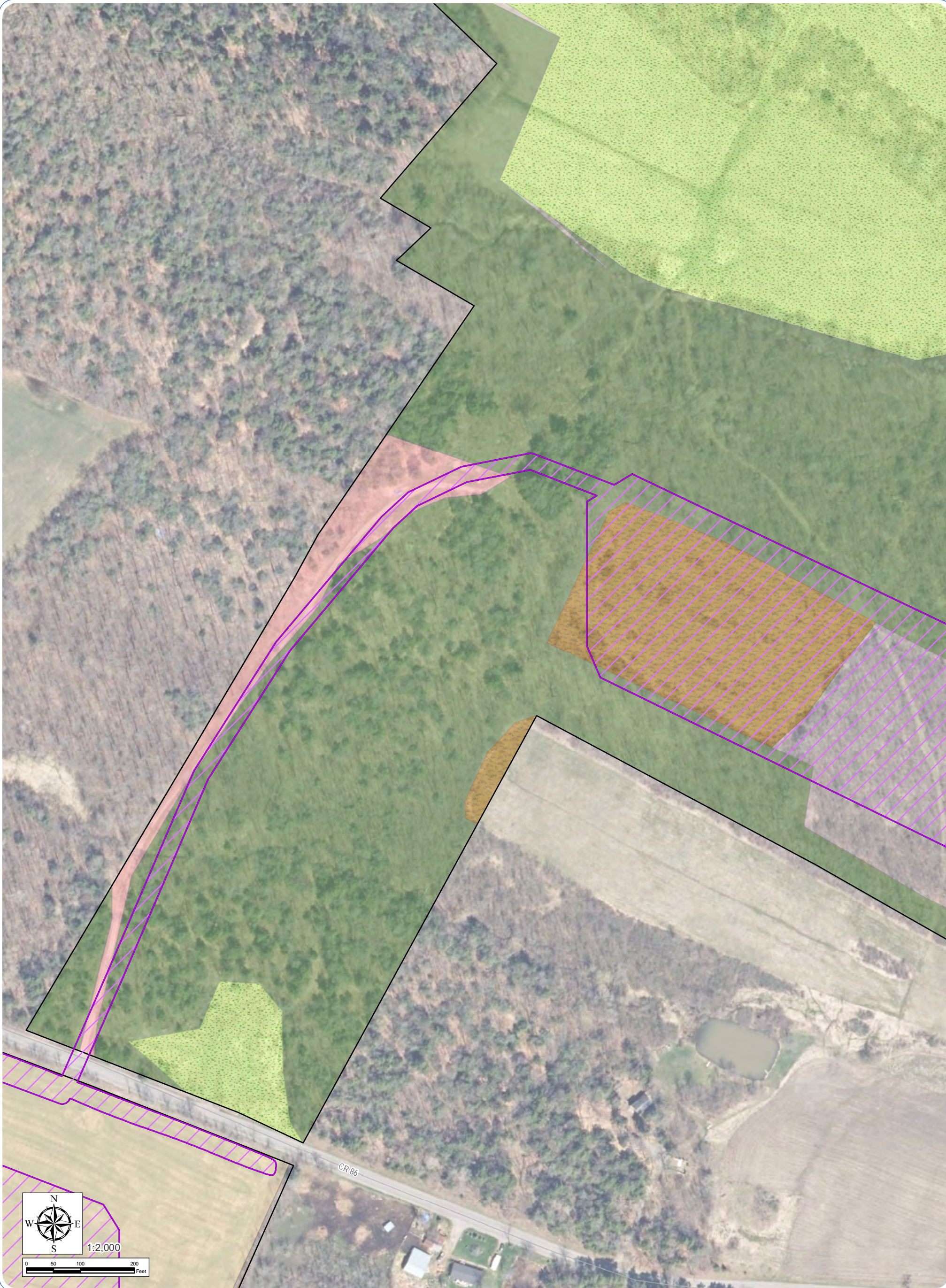
Vegetative Community

- Agricultural
- Disturbed/Developed
- Farm Pond
- Successional Shrubland
- Successional Old Field
- Mixed Deciduous/Coniferous Forest

Civil Boundaries

- City/Village Boundary
- Town Boundary
- County Boundary





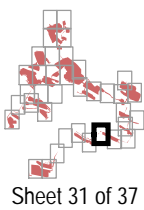
Mohawk Solar

Towns of Canajoharie and Minden,
Montgomery County, New York

Article 10 Application

Figure 22-1: Impact to Plant Communities

Notes: 1. Basemap: NYSDOP "2017" orthoimagery map service. 2. This map was generated in ArcMap by Environmental Design and Research on May 23, 2019. 3. This is a color graphic. Reproduction in grayscale may misrepresent the data. 4. While the scale of mapping depicted in the application may cause some project components or direct impacts to appear on adjacent non-participating parcels, all components will be sited during final design to only be located on or directly impact parcels or portions of parcels which are controlled by the applicant.



- Proposed Facility Components**
- Facility Site
 - Limit of Temporary Soil Disturbance / Vegetation Clearing

- Vegetative Community**
- Agricultural
 - Disturbed/Developed
 - Farm Pond
 - Successional Shrubland
 - Successional Old Field
 - Mixed Deciduous/Coniferous Forest

- Civil Boundaries**
- City/Village Boundary
 - Town Boundary
 - County Boundary





Mohawk Solar
Towns of Canajoharie and Minden,
Montgomery County, New York

Article 10 Application

Figure 22-1: Impact to Plant Communities

Notes: 1. Basemap: NYSDOP "2017" orthoimagery map service. 2. This map was generated in ArcMap by Environmental Design and Research on May 23, 2019. 3. This is a color graphic. Reproduction in grayscale may misrepresent the data. 4. While the scale of mapping depicted in the application may cause some project components or direct impacts to appear on adjacent non-participating parcels, all components will be sited during final design to only be located on or directly impact parcels or portions of parcels which are controlled by the applicant.



- Proposed Facility Components**
- Facility Site
 - Limit of Temporary Soil Disturbance / Vegetation Clearing

- Vegetative Community**
- Agricultural
 - Disturbed/Developed
 - Farm Pond
 - Successional Shrubland
 - Successional Old Field
 - Mixed Deciduous/Coniferous Forest

- Civil Boundaries**
- City/Village Boundary
 - Town Boundary
 - County Boundary





Mohawk Solar
Towns of Canajoharie and Minden,
Montgomery County, New York

Article 10 Application

Figure 22-1: Impact to Plant Communities

Notes: 1. Basemap: NYSDOP "2017" orthoimagery map service. 2. This map was generated in ArcMap by Environmental Design and Research on May 23, 2019. 3. This is a color graphic. Reproduction in grayscale may misrepresent the data. 4. While the scale of mapping depicted in the application may cause some project components or direct impacts to appear on adjacent non-participating parcels, all components will be sited during final design to only be located on or directly impact parcels or portions of parcels which are controlled by the applicant.



Proposed Facility Components

- Facility Site
- Limit of Temporary Soil Disturbance / Vegetation Clearing

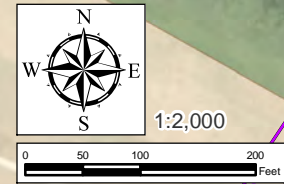
Vegetative Community

- Agricultural
- Disturbed/Developed
- Farm Pond
- Successional Shrubland
- Successional Old Field
- Mixed Deciduous/Coniferous Forest

Civil Boundaries

- City/Village Boundary
- Town Boundary
- County Boundary





Mohawk Solar

Towns of Canajoharie and Minden,
Montgomery County, New York

Article 10 Application

Figure 22-1: Impact to Plant Communities

Notes: 1. Basemap: NYSDOP "2017" orthoimagery map service. 2. This map was generated in ArcMap by Environmental Design and Research on May 23, 2019. 3. This is a color graphic. Reproduction in grayscale may misrepresent the data. 4. While the scale of mapping depicted in the application may cause some project components or direct impacts to appear on adjacent non-participating parcels, all components will be sited during final design to only be located on or directly impact parcels or portions of parcels which are controlled by the applicant.



Sheet 34 of 37

- Proposed Facility Components**
- Facility Site
 - Limit of Temporary Soil Disturbance / Vegetation Clearing

- Vegetative Community**
- Agricultural
 - Disturbed/Developed
 - Farm Pond
 - Successional Shrubland
 - Successional Old Field
 - Mixed Deciduous/Coniferous Forest

- Civil Boundaries**
- City/Village Boundary
 - Town Boundary
 - County Boundary





Mohawk Solar
Towns of Canajoharie and Minden,
Montgomery County, New York

Article 10 Application

Figure 22-1: Impact to Plant Communities

Notes: 1. Basemap: NYSDOP "2017" orthoimagery map service. 2. This map was generated in ArcMap by Environmental Design and Research on May 23, 2019. 3. This is a color graphic. Reproduction in grayscale may misrepresent the data. 4. While the scale of mapping depicted in the application may cause some project components or direct impacts to appear on adjacent non-participating parcels, all components will be sited during final design to only be located on or directly impact parcels or portions of parcels which are controlled by the applicant.



Sheet 35 of 37

Proposed Facility Components

- Facility Site
- Limit of Temporary Soil Disturbance / Vegetation Clearing

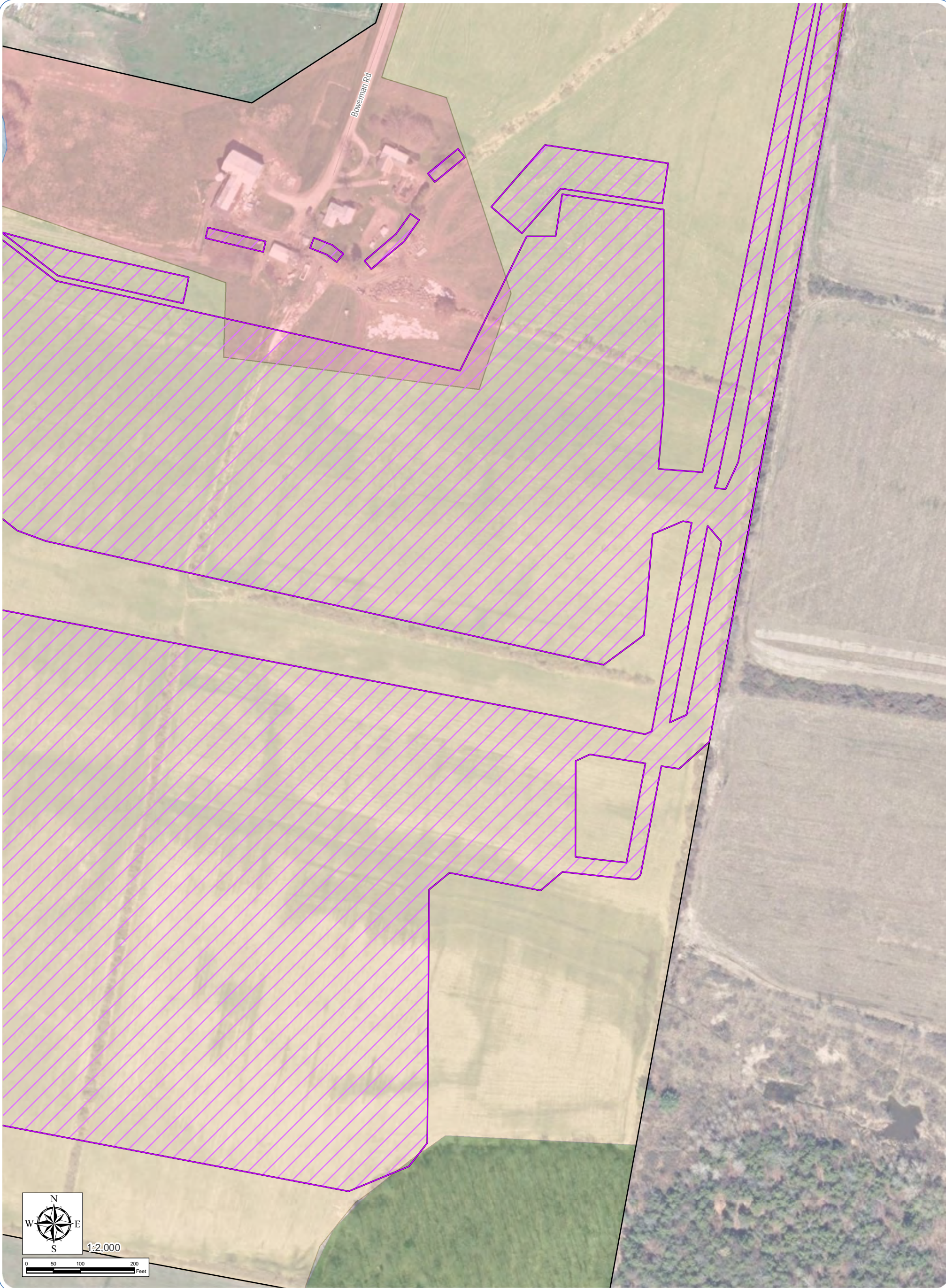
Vegetative Community

- Agricultural
- Disturbed/Developed
- Farm Pond
- Successional Shrubland
- Successional Old Field
- Mixed Deciduous/Coniferous Forest

Civil Boundaries

- City/Village Boundary
- Town Boundary
- County Boundary





Mohawk Solar
Towns of Canajoharie and Minden,
Montgomery County, New York

Article 10 Application

Figure 22-1: Impact to Plant Communities

Notes: 1. Basemap: NYSDOP "2017" orthoimagery map service. 2. This map was generated in ArcMap by Environmental Design and Research on May 23, 2019. 3. This is a color graphic. Reproduction in grayscale may misrepresent the data. 4. While the scale of mapping depicted in the application may cause some project components or direct impacts to appear on adjacent non-participating parcels, all components will be sited during final design to only be located on or directly impact parcels or portions of parcels which are controlled by the applicant.

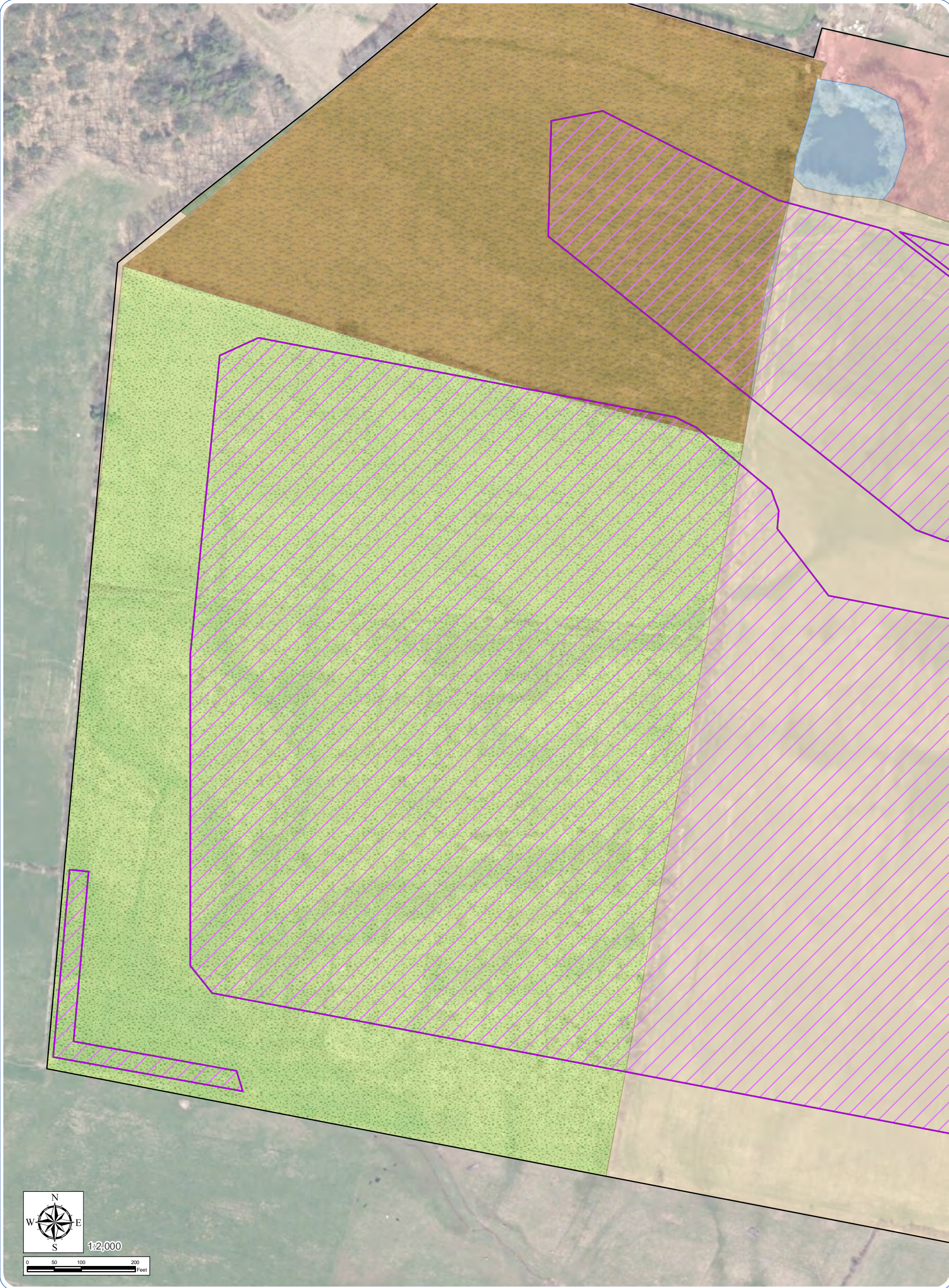


- Proposed Facility Components**
- Facility Site
 - Limit of Temporary Soil Disturbance / Vegetation Clearing

- Vegetative Community**
- Agricultural
 - Disturbed/Developed
 - Farm Pond
 - Successional Shrubland
 - Successional Old Field
 - Mixed Deciduous/Coniferous Forest

- Civil Boundaries**
- City/Village Boundary
 - Town Boundary
 - County Boundary



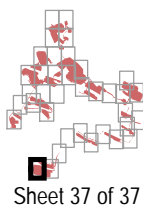


Mohawk Solar
Towns of Canajoharie and Minden,
Montgomery County, New York

Article 10 Application

Figure 22-1: Impact to Plant Communities

Notes: 1. Basemap: NYSDOP "2017" orthoimagery map service. 2. This map was generated in ArcMap by Environmental Design and Research on May 23, 2019. 3. This is a color graphic. Reproduction in grayscale may misrepresent the data. 4. While the scale of mapping depicted in the application may cause some project components or direct impacts to appear on adjacent non-participating parcels, all components will be sited during final design to only be located on or directly impact parcels or portions of parcels which are controlled by the applicant.



Proposed Facility Components

- Facility Site
- Limit of Temporary Soil Disturbance / Vegetation Clearing

Vegetative Community

- Agricultural
- Disturbed/Developed
- Farm Pond
- Successional Shrubland
- Successional Old Field
- Mixed Deciduous/Coniferous Forest

Civil Boundaries

- City/Village Boundary
- Town Boundary
- County Boundary

