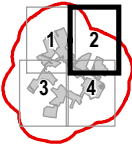


Mohawk Solar
Towns of Canajoharie and Minden,
Montgomery County, New York

Article 10 Application

Figure 19-1: Sensitive Sound Receptors Sheet 2 of 4
Notes: 1. Basemap: NYSDOP "2017" orthoimagery map service. 2. This map was generated in ArcMap by Environmental Design and Research on May 16, 2019. 3. This is a color graphic. Reproduction in grayscale may misrepresent the data. 4. There are no hospitals present in the area depicted on this map.



Proposed Facility Components

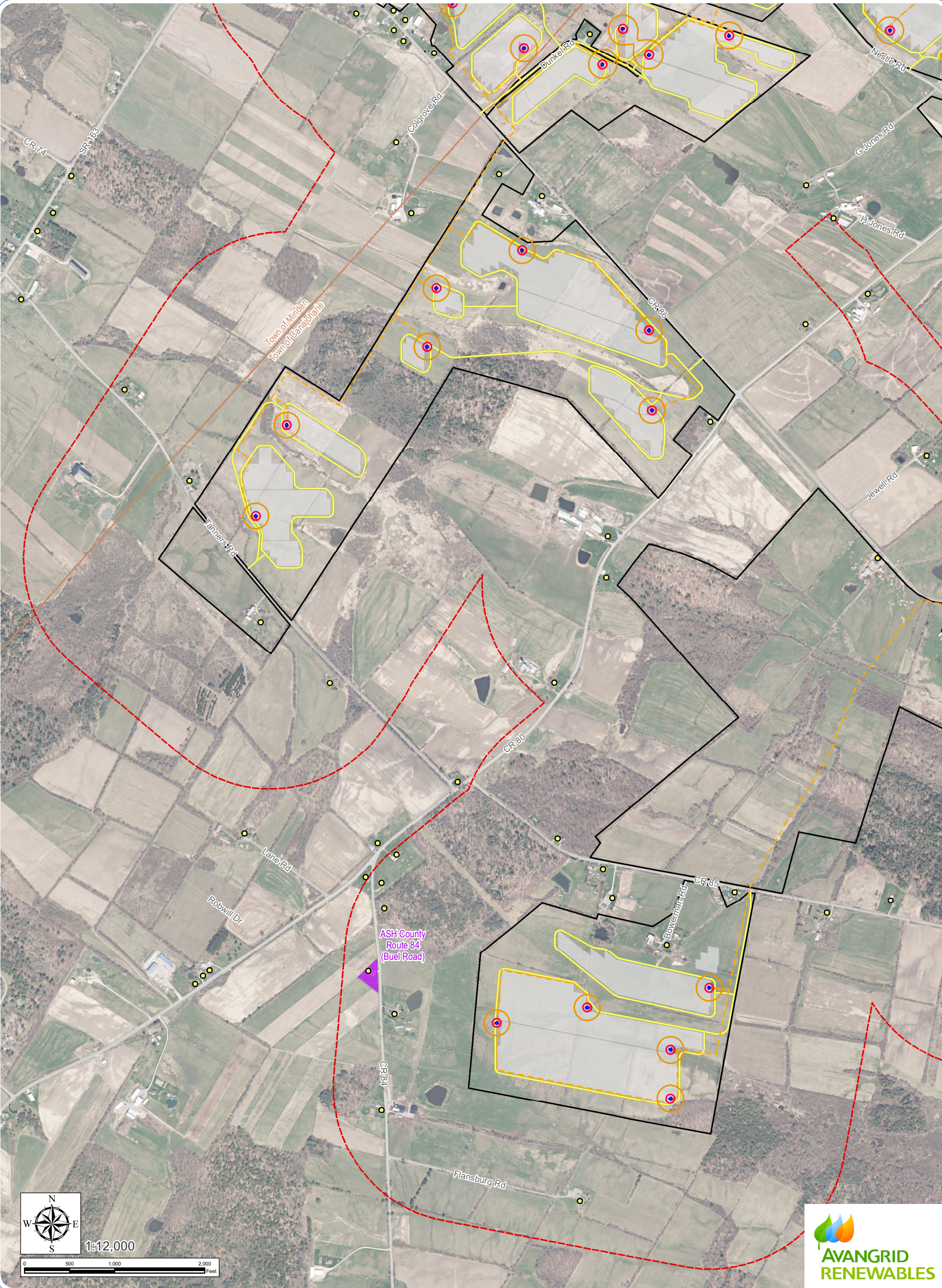
- Transformer
- Buried Collection Line
- Access Road
- PV Panel Array
- POI Switchyard
- Collection Substation
- Laydown Area
- Facility Site
- 1500-Foot Facility Site Study Area

Sensitive Sound Receptors

- Hospital
- Residences
- Public Schools
- Hamlet
- NRHP-Eligible Resource
- Local Hiking Trail
- NYS Hiking Trail
- NYS Bike Route
- NYS Scenic Byway
- Creek
- Golf Course
- Local Recreation
- NYSDEC Land
- NRHP-Listed Resource
- Amish School House
- School

Noise Study Results

- Sound Contours
- 30 dBA
- 40 dBA
- 50 dBA
- Civil Boundaries
- City/Village Boundary
- Town Boundary
- County Boundary

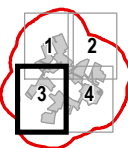


Mohawk Solar

Towns of Canajoharie and Minden,
Montgomery County, New York

Article 10 Application

Figure 19-1: Sensitive Sound Receptors Sheet 3 of 4
Notes: 1. Basemap: NYSDOP "2017" orthoimagery map service. 2. This map was generated in ArcMap by Environmental Design and Research on May 16, 2019. 3. This is a color graphic. Reproduction in grayscale may misrepresent the data. 4. There are no hospitals present in the area depicted on this map.



Proposed Facility Components

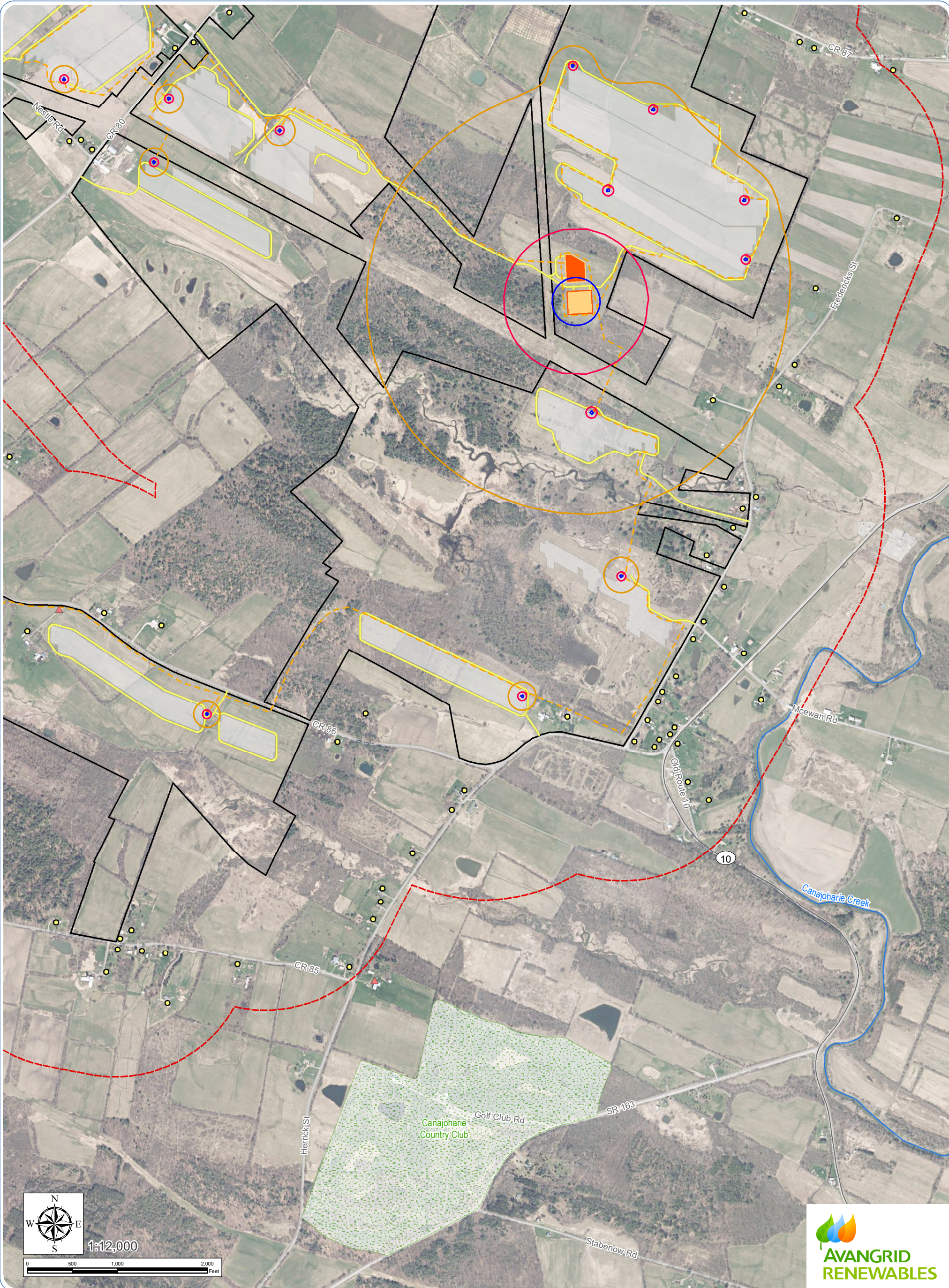
- Transformer
- Buried Collection Line
- Access Road
- PV Panel Array
- POI Switchyard
- Collection Substation
- Laydown Area
- Facility Site
- 1500-Foot Facility Site Study Area

Sensitive Sound Receptors

- Hospital
- Residences
- Public Schools
- Hamlet
- NRHP-Eligible Resource
- Local Hiking Trail
- NYS Hiking Trail
- NYS Bike Route
- NYS Scenic Byway
- Creek
- Golf Course
- Local Recreation
- NYSDEC Land
- NRHP-Listed Resource
- Amish School House
- School

Noise Study Results

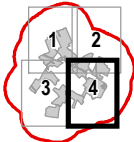
- Sound Contours
 - 30 dBA
 - 40 dBA
 - 50 dBA
- Civil Boundaries
 - City/Village Boundary
 - Town Boundary
 - County Boundary



Mohawk Solar
Towns of Canajoharie and Minden,
Montgomery County, New York

Article 10 Application

Figure 19-1: Sensitive Sound Receptors Sheet 4 of 4
Notes: 1. Basemap: NYSDOP "2017" orthoimagery map service. 2. This map was generated in ArcMap by Environmental Design and Research on May 16, 2019. 3. This is a color graphic. Reproduction in grayscale may misrepresent the data. 4. There are no hospitals present in the area depicted on this map.



Proposed Facility Components

- Transformer
- Buried Collection Line
- Access Road
- PV Panel Array
- POI Switchyard
- Collection Substation
- Laydown Area
- Facility Site
- 1500-Foot Facility Site Study Area

Sensitive Sound Receptors

- Hospital
- Residences
- Public Schools
- Hamlet
- NRHP-Eligible Resource
- Local Hiking Trail
- NYS Hiking Trail
- NYS Bike Route
- NYS Scenic Byway
- Creek
- Golf Course
- Local Recreation
- NYSDEC Land
- NRHP-Listed Resource
- Amish School House
- School

Noise Study Results

- Sound Contours
- 30 dBA
- 40 dBA
- 50 dBA
- Civil Boundaries
- City/Village Boundary
- Town Boundary
- County Boundary