

Appendix F

Stakeholder Outreach and Correspondence



Environmental Design & Research,
Landscape Architecture, Engineering & Environmental Services, D.P.C.
217 Montgomery Street, Suite 1000, Syracuse, New York 13202
P. 315.471.0688 • F. 315.471.1061 • www.edrdpc.com

October 18, 2017

**Municipal Planning Representatives
Per Attached Distribution List**

**RE: Mohawk Solar
Identification of Visually Sensitive Resources
Official Request for Information**

Dear Municipal Planning Representative:

Below please find information related to the ongoing development and review of the Mohawk Solar project. The purpose of this letter is to request information on behalf of the project regarding aesthetic, scenic, recreational, historic, and other visually sensitive sites and areas that you feel the project should be aware of and consider.

As you may be aware Mohawk Solar, LLC ("the Applicant") is proposing to construct a 90 megawatt (MW) solar power facility ("the Facility") in the Towns of Canajoharie and Minden (see attached Figures 1 and 2). The proposed Facility is subject to the rules for siting a major electric generating facility under Article 10 of the New York State Public Service Law. In accordance with the Article 10 regulations, the Applicant published a Public Involvement Program ("PIP") plan for this project in May 2017 and is currently preparing a Preliminary Scoping Statement ("PSS"), which is anticipated to be published in October 2017. These documents are available on the project's website at <http://avangridren.com/mohawksolar>. Please refer to these documents and the project's website for additional details regarding the proposed Facility.

The Applicant is currently undertaking studies to assist in evaluating the potential environmental impacts of the proposed Facility. One such study is a Visual Impact Assessment (VIA), which will be included as Exhibit 24 of the Article 10 application. An important component of the VIA is the "identification of sensitive resources", as defined in the Article 10 regulations. The information presented in this letter and its enclosures is intended to provide you with sufficient context and information to assist with the identification of these sensitive resources and the selection of important and/or representative viewpoints to be used for impact evaluation.

Feedback Request

In accordance with the requirements of Article 10, Exhibit 24, Part 1001.24(b)(4), the Applicant is formally requesting feedback from municipal planning, and state agency representatives in the identification of locally important or representative viewpoints within the 2-mile study area and statewide/federally sensitive sites within the 5-mile-radius Visual Study Area. Please review the inventory of sensitive resources included as Table 1 and depicted on Figure 3.

[Landscape Architecture • Civil Engineering • Regulatory Compliance • Ecological Resource Management
Cultural Resource Management • Visual Impact Assessment • Community Planning • Golf Course Architecture]

Mohawk Solar

Towns of Canajoharie, and Minden, Montgomery County, New York

Visual Impact Assessment | Appendix F (i): Visual Outreach Letter and Accompanying Documents

Sheet 1 of 16



The Applicant believes that the list of aesthetic resources included herein represents a comprehensive inventory of the significant sensitive aesthetic resources in the study area of the proposed Facility. Please consider whether there are any additionally significant visually sensitive sites that are not included in the inventory, and if so please provide the Applicant with:

- 1) The name and location of additional visually sensitive resources (not identified in Table 1) that you feel should be included in the inventory of aesthetic resources and subsequent evaluation of potential visual impacts.
- 2) Your recommendations for viewpoints that you feel would be strong candidates for the development of visual simulations, with an explanation of why you feel that view or location is important to consider.

Please provide this information by Thursday November 30, 2017 to the Applicant:

- Via email at mrobinson@edrdpc.com.
Please type "Mohawk Solar - Visual Resources" in the subject line.
or
- Via written letter to:
Environmental Design & Research, Landscape Architecture, Engineering, & Environmental Services, D.P.C.
Attn: Matthew Robinson
217 Montgomery Street, Suite 1000
Syracuse, New York 13202

If you do provide feedback via mail, please include your email address so that we can follow up with you with future correspondence related the project and review of visual effects.

We sincerely appreciate your assistance helping us to identify significant sensitive sites and areas.

Visual Study Area

Per the requirements set forth in 16 NYCRR § 1000.2(ar), the visual study area to be used for analysis of major electric generating facilities as "an area generally related to the nature of the technology and the setting of the proposed site. For large facilities or wind power facilities with components spread across a rural landscape, the study area shall generally include the area within a radius of at least five miles from all generating facility components, interconnections and related facilities and alternative location sites." Unlike other types of energy development that can include tall structures and/or plumes that can be visible from long distances (e.g., 5 miles or more), a solar generating facility does not have any tall structures or other prominently visible components. The tallest components of the generating portion of the proposed Facility will be the PV panels and inverter equipment, which have a relatively low profile, and are not expected to be more than 10 feet above grade, less than a single-story residence. Therefore, the nature of the technology is such that visibility is anticipated to be relatively limited to those areas located adjacent to the Facility.

To ensure that potential visual effects on regional visually sensitive resources are adequately considered in the Article 10 Application, the VIA will address a broader 5-mile-radius Visual Study Area. This Visual Study Area will be used for

Environmental Design & Research,
Landscape Architecture, Engineering & Environmental Services, D.P.C.

Page | 2

Mohawk Solar

Towns of Canajoharie, and Minden, Montgomery County, New York

Visual Impact Assessment | Appendix F (i): Visual Outreach Letter and Accompanying Documents

Sheet 2 of 16



identifying visually sensitive resources of regional and/or statewide significance, and evaluating visibility and potential visual impacts to those sites. The Visual Study Area boundary is depicted on Figure 3.

Sensitive Resources

Aesthetic resources of statewide significance are formally defined by the Department of Environmental Conservation (DEC) in the Program Policy entitled *Assessing and Mitigating Visual Impacts*¹ (the “DEC Visual Policy”). The requirements of Article 10, Exhibit 24, part 1001.24 (b)(4)(ii) identify additional categories of sensitive resources. Together, these two sources identify the following sensitive resources:

- Properties listed on or determined eligible for listing on the National Register of Historic Places.
- State Parks and Historic Sites.
- Urban Cultural Parks (now referred to as New York State designated Heritage Areas).
- The State Forest Preserve (i.e., the Adirondack or Catskill Parks).
- National Wildlife Refuges, State Game Refuges, and State Wildlife Management Areas.
- National Natural Landmarks.
- National Parks, Recreation Areas, Seashores, or Forests.
- Rivers designated as Wild, Scenic or Recreational Rivers, by the state or federal government
- A site, district, lake, reservoir, or highway designated or eligible for designation as scenic.
- Scenic Areas of Statewide Significance.
- A local, state or federally designated trail, or one proposed for designation.
- Adirondack Park Scenic Vistas.
- State Nature and Historic Preserve Areas.
- Palisades Park lands
- Bond Act Properties purchased under Exceptional Scenic Beauty or Open Space category.
- Landmark Natural Sites.
- Conservation and Scenic Easement Lands.
- Locally designated scenic areas and overlooks.
- High use public areas

Environmental Design & Research, Landscape Architecture, Engineering, & Environmental Services, D.P.C. (EDR) conducted a desktop inventory of sensitive resources of potential statewide significance within 5-miles of the proposed Facility. Identified resources within the Visual Study Area are listed in the attached Table 1, and their locations depicted on Figure 3. This letter seeks input on Local Resources that have been identified as significant through Town Plans, websites, and publications, or have a cultural relevance to local residents. This could include, but is not limited to, local trails, parks, overlooks and locally designated historic properties.

¹ The DEC Program Policy *Assessing and Mitigating Visual Impacts* was issued on July 31, 2000 and can be reviewed here: http://www.dec.ny.gov/docs/permits_ej_operations_pdf/visual2000.pdf.

Environmental Design & Research,
Landscape Architecture, Engineering & Environmental Services, D.P.C.

Selection of Viewpoints for Preparation of Visual Simulations

The VIA will also include a field review (site visit) to evaluate potential project visibility and obtain photographs for subsequent use in the development of photographic simulations of the proposed facility. Photographs will be taken from representative viewpoints within the study area, including sensitive resources identified by local stakeholders in response to this letter. Photographs taken from each viewpoint during field review will be used to document potential visibility of the proposed Facility from various distances and visual settings within the study area.

A subset of the viewpoints photographed during the field review effort will be selected for the development of visual simulations. It is not anticipated that simulations will be prepared from every sensitive resource or area of concern identified by local stakeholders, or from every area with potential Facility visibility within the study area. Instead, it is anticipated that a subset of representative viewpoints will be selected that will provide a set of simulations that illustrate the appearance of the Facility from a range of distances and representative visual settings within the study area.

Thank you for your feedback,



Matthew Robinson

Environmental Design & Research, Landscape Architecture, Engineering, & Environmental Services, D.P.C.
On behalf of Mohawk Solar, LLC

List of Enclosures:

- Table 1. Sensitive Resources
- Figure 1. Regional Facility Location
- Figure 2. Facility Area
- Figure 3. Visually Sensitive Resources and Viewshed Analysis

Environmental Design & Research,
Landscape Architecture, Engineering & Environmental Services, D.P.C.

Page | 4

Table 1. Visually Sensitive Resources

Mohawk Solar

Visually Sensitive Resource	Location		Distance ¹ Miles from Nearest Project Component	Distance Zone ● Foreground ● Midground ● Background	Project Visibility		
	Town	County			+ Visible	- Not Visible	+/- Partially Visible
Visually Sensitive Resource							
1. Properties Listed in the National or State Register of Historic Places							
Canajoharie Historic District (2014)		Canajoharie	Montgomery	0.5	●	-	
		Canajoharie, Danube, Minden, Palatine, Root, St Johnsville	Herkimer, Montgomery	0.9	●	-	
Enlarged Erie Barge Canal Nominated by NPS (2014)		Minden	Montgomery	0.9	●	-	
Fort Plain Historic District		Canajoharie	Montgomery	1.0	●	-	
Bragdon-Lipe House		Canajoharie	Montgomery	1.0	●	-	
Van Alstyne House		Palatine	Montgomery	1.1	●	-	
Frey House		Canajoharie	Montgomery	1.1	●	-	
US Post Office--Canajoharie		Canajoharie	Montgomery	1.1	●	-	
West Hill School		Canajoharie	Montgomery	1.1	●	-	
US Post Office--Fort Plain		Minden	Montgomery	1.3	●	-	
Wagner, Webster, House		Palatine	Montgomery	1.5	●	-	
Nelliston Historic District		Palatine	Montgomery	1.6	●	-	
Palatine Bridge Freight House		Palatine	Montgomery	1.6	●	-	
Lasher-Davis House		Palatine	Montgomery	1.7	●	-	
Ehle, Peter, House		Palatine	Montgomery	1.8	●	-	
Nelliston School		Palatine	Montgomery	1.8	●	-	
Walrath-Van Horne House		Palatine	Montgomery	1.9	●	-	
Waterman-Gramps House		Palatine	Montgomery	1.9	●	-	
Nellis, Jacob, Farmhouse		Palatine	Montgomery	2.0	●	+/-	
Ames Academy Building		Canajoharie	Montgomery	2.1	●	-	
Daniel G. Van Wie Farmstead		Palatine	Montgomery	3.0	●	+/-	
Trinity Lutheran Church and Cemetery		Palatine	Montgomery	3.2	●	+/-	
John Smith Farm		Minden	Montgomery	3.3	●	+/-	
Palatine Church		Palatine	Montgomery	3.5	●	+	
Windfall Dutch Barn		Minden	Montgomery	3.5	●	-	

Table 1. Visually Sensitive Resources

Mohawk Solar

Visually Sensitive Resource	Location			Distance ¹ Miles from Nearest Project Component	Distance Zone ● Foreground ● Midground ● Background	Project Visibility	
	Town	County				+ Visible	- Not Visible +/- Partially Visible
Reformed Dutch Church of Stone Arabia	Palatine	Montgomery		3.7	●	+	+
Springfield Patent Historic District	Minden, Springfield, Stark	Herkimer, Montgomery, Otsego		3.9	●	+	+/-
Sharon Springs Historic District	Sharon	Schoharie		4.0	●	+	+/-
The Tepee	Cherry Valley	Otsego		4.1	●	+	+/-
Lindesay Patent Rural Historic District	Cherry Valley, Springfield	Otsego		4.2	●	+	+/-
Montgomery County Farm	Palatine	Montgomery		4.2	●	-	-
Fort Klock	St Johnsville	Montgomery		4.5	●	-	-
Kills Farmstead	Palatine	Montgomery		4.6	●	+	+/-
American Hotel	Sharon	Schoharie		4.7	●	-	-
John Lehman House	Sharon	Schoharie		5.1	●	+	+
Properties Eligible for Listing in the National or State Register of Historic Places							
Residence - 99 Reid St	Minden	Montgomery		0.7	●	-	-
59 Otsego St	Canajoharie	Montgomery		0.9	●	-	-
74 Otsego St	Canajoharie	Montgomery		0.9	●	-	-
Movable Dam 10/Lock E-14 - Spring St	Canajoharie, Palatine	Montgomery		1.0	●	-	-
16 West Main St	Canajoharie	Montgomery		1.1	●	-	-
3 Rock St (1-2-3 Cliff St)	Canajoharie	Montgomery		1.1	●	-	-
8 Church St	Canajoharie	Montgomery		1.1	●	-	-
8 Church St	Canajoharie	Montgomery		1.1	●	-	-
Pedestal Traffic Light - Church St	Canajoharie	Montgomery		1.1	●	-	-

Table 1. Visually Sensitive Resources

Mohawk Solar

Visually Sensitive Resource	Location		Distance ¹ Miles from Nearest Project Component	Distance Zone ● Foreground ● Midground ● Background	Project Visibility	
	Town	County			+Visible - Not Visible +/- Partially Visible	Preliminary Topographic/Vegetation Viewshed
Railroad Bridge over Canajoharie Creek - Little Mohawk	Canajoharie	Montgomery	1.1	●	-	
12 Church St	Canajoharie	Montgomery	1.2	●	-	
1-3 Rock St	Canajoharie	Montgomery	1.2	●	-	
Bridge over Canajoharie Creek - Main St	Canajoharie	Montgomery	1.2	●	-	
Cut Limestone Retaining Wall and Bridge Abutment - NY 10	Palatine	Montgomery	1.4	●	-	
Fort Plain Museum Lipe House - 389 Canal St	Minden	Montgomery	1.6	●	-	
Moveable dam 11 at Lock E-15 - Main St	Minden, Palatine	Montgomery	1.7	●	-	
Building Z (DOT PIN #2029,28.101) - 6696 Dutchtown Rd	Minden	Montgomery	2.0	●	-	
Brookman Corners Road Bridge	Minden	Montgomery	2.8	●	-	
Olisquago Grange (Building E) - 89 NY-80	Minden	Montgomery	2.8	●	-	
Building G2 (DOT PIN #2029,28.101) - 7047 Dutchtown Rd	Minden	Montgomery	3.1	●	-	
Building D2 (DOT PIN #2029,28.101) - 7145 Dutchtown Rd	Minden	Montgomery	3.5	●	+/-	
Moyer Road bridge - NY 80	Minden	Montgomery	4.3	●	-	
Sharon Springs School built 1930 brick, colonial revival - 514 US 20	Sharon	Schoharie	4.8		-	
2. State Parks						
None in Study Area						
3. Urban Cultural Parks/Heritage Areas						

Table 1. Visually Sensitive Resources

Mohawk Solar

Visually Sensitive Resource	Location		Distance ¹ Miles from Nearest Project Component	Distance Zone ● Foreground ● Midground ● Background	Project Visibility	
	Town	County			+ Visible - Not Visible +/- Partially Visible	Preliminary Topographic/Vegetation Viewshed
Erie Canalway National Heritage Corridor	Canajoharie, Danube, Minden, Palatine, Root, St Johnsville, Stark	Herkimer, Montgomery, Schoharie	0.0		+/-	
Mohawk Valley Heritage Corridor	Canajoharie, Cherry Valley, Danube, Minden, Palatine, Root, Sharon, Springfield, St Johnsville, Stark	Herkimer, Montgomery, Otsego, Schoharie	0.0		+/-	
4. State Forest Preserves						
None in Study Area						
5. National Wildlife Refuges, State Game Refuges and State Wildlife Management Areas						
None in Study Area						
6. National Natural Landmarks						
None in Study Area						
7. National Parks, Recreation Areas, Seashores and/or Forests						
None in Study Area						
8. National or State Designated Wild, Scenic, or Recreational Rivers						
None in Study Area						
9. Sites, Areas, Lakes, Reservoirs or Highways Designated or Eligible as Scenic						
Revolutionary Trail Scenic Byway	Palatine, St Johnsville	Herkimer, Montgomery	1.3	●	+/-	
Route 20 Scenic Byway	Cherry Valley, Sharon, Springfield	Otsego, Schoharie	4.2	●	+/-	
10. Scenic Areas of Statewide Significance						
None in Study Area						
11. State and Federally Designated Trails						
Bike Route 5	Canajoharie, Danube, Minden, Root	Herkimer, Montgomery	0.7	●	+/-	
NYS Canalway Trail	Canajoharie, Danube, Minden, Root	Herkimer, Montgomery	0.7	●	-	
NYS Canalway Water Trail	Canajoharie, Danube, Minden, Palatine, Root, St Johnsville	Herkimer, Montgomery	0.9	●	-	

Table 1. Visually Sensitive Resources

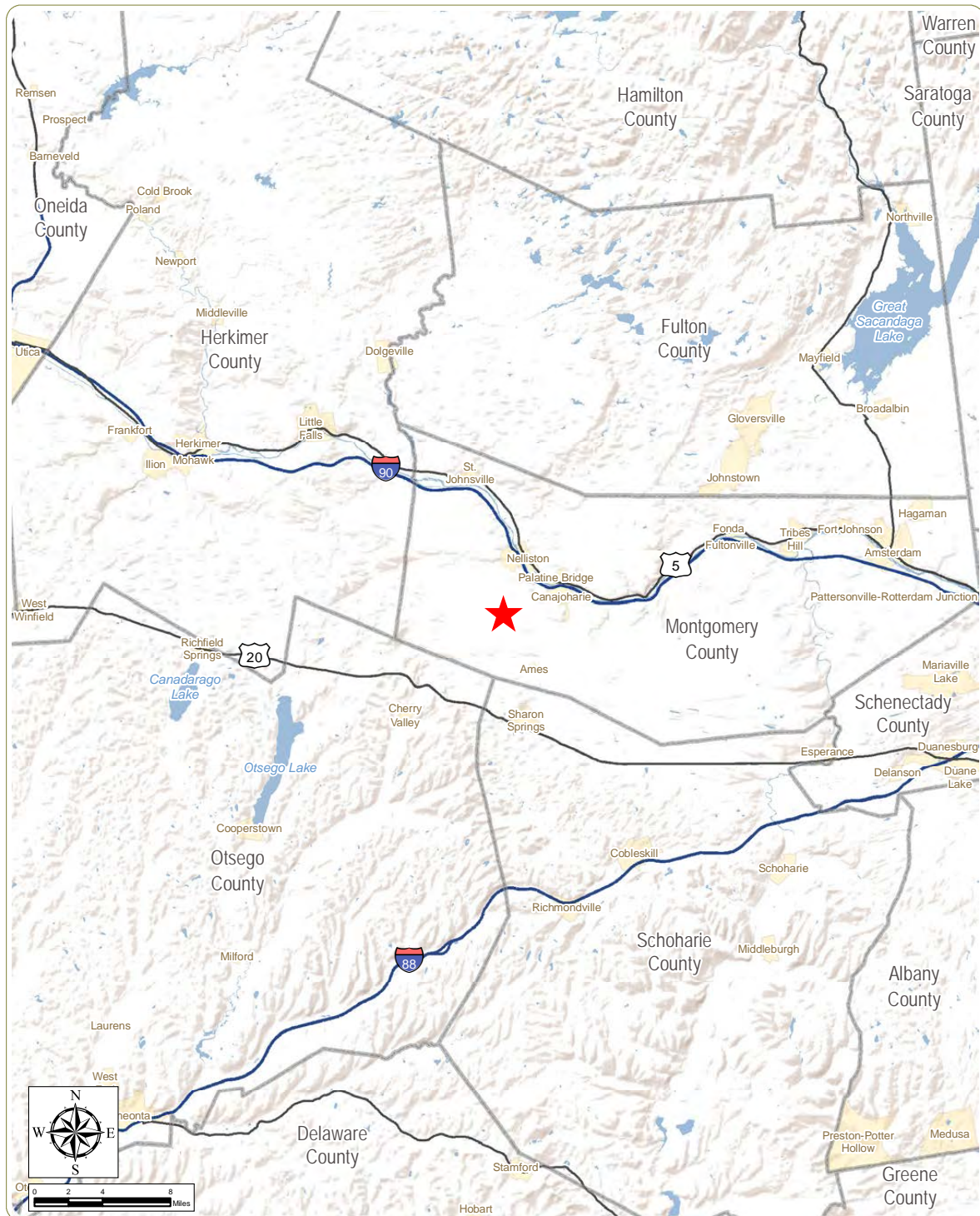
Visually Sensitive Resource	Location		Distance ¹ Miles from Nearest Project Component	Distance Zone ● Foreground ● Midground ● Background	Project Visibility	
	Town	County			+ Visible - Not Visible +/- Partially Visible	Preliminary Topographic/Vegetation Viewshed
12. Adirondack Park Scenic Vistas						
None in Study Area						
13. State Nature and Historic Preserve Areas						
None in Study Area						
14. Palisades Park						
None in Study Area						
15. Bond Act Properties for Exceptional Beauty or Open Space						
None in Study Area						
Other Resources of Statewide or Regional Significance						
NYSDEC Lands						
Nelliston Boat Launch Site	Palatine	Montgomery	1.5	●	-	
Oltsuago State Forest	Stark	Herkimer	4.7	●	+/-	
Locally Important Resources						
Areas of Intensive Land Use (City, Village, Hamlet)						
Village of Canajoharie	Canajoharie, Palatine	Montgomery	0.4	●	+/-	
Village of Fort Plain	Canajoharie, Minden, Palatine	Montgomery	0.4	●	+/-	
Village of Palatine Bridge	Canajoharie, Palatine	Montgomery	1.1	●	+/-	
Village of Nelliston	Canajoharie, Minden, Palatine	Montgomery	1.3	●	+/-	
Village of Ames	Canajoharie	Montgomery	1.7	●	-	
Hamlet of Salt Springville	Cherry Valley, Minden	Montgomery, Otsego	3.5	●	-	
Hamlet of Sprakers	Root	Montgomery	3.9	●	-	
Village of Sharon Springs	Sharon	Schoharie	3.9	●	+/-	
Major Transportation Corridors						
SR 10	Canajoharie, Palatine, Sharon	Montgomery, Schoharie	0.0		+/-	
SR 163	Canajoharie, Minden	Montgomery	0.0		+/-	
SR 5S	Canajoharie, Minden, Root	Montgomery	0.7	●	+/-	

Table 1. Visually Sensitive Resources

Visually Sensitive Resource	Location		Distance ¹ Miles from Nearest Project Component	Distance Zone ● Foreground ● Midground ● Background	Project Visibility	
	Town	County			+ Visible - Not Visible +/- Partially Visible	Preliminary Topographic/Vegetation Viewshed
SR 80	Minden, Palatine, Stark	Herkimer, Montgomery	1.1	●	+/-	
I 90	Canajoharie, Minden, Root	Montgomery	1.2	●	+/-	
SR 5	Palatine, St Johnsville	Montgomery	1.3	●	+/-	
SR 162	Canajoharie, Root	Montgomery, Schoharie	3.2	●	+/-	
US 20	Cherry Valley, Sharon, Springfield	Otsego, Schoharie	4.3	●	+/-	
SR 166	Cherry Valley	Otsego	4.6	●	+/-	
Local Parks						
NBT Park	Canajoharie	Montgomery	1.1	●	+/-	
Arkell Park	Canajoharie	Montgomery	1.2	●	+/-	
Library Park	Canajoharie	Montgomery	1.2	●	+/-	
Wiles Park	Minden	Montgomery	1.2	●	+/-	
Wintergreen Park	Canajoharie	Montgomery	1.3	●	+/-	
Waterfront Park and Canajoharie Boat Launch	Canajoharie	Montgomery	1.4	●	+/-	
Lakes and Rivers						
Canajoharie Creek	Canajoharie, Cherry Valley, Minden	Montgomery, Otsego	0.0		+/-	
Otsuago Creek	Minden, Stark	Herkimer, Montgomery	0.6	●	-	
Mohawk River	Canajoharie, Danube, Minden, Palatine, Root, St Johnsville	Herkimer, Montgomery	0.9	●	-	
Bowmans Creek	Canajoharie, Minden	Montgomery	1.0	●	-	
Brimstone Creek	Canajoharie, Sharon	Montgomery, Schoharie	1.4	●	-	
Fort Plain Reservoir	Palatine	Montgomery	2.5	●	+/-	
Flat Creek	Canajoharie, Root	Montgomery	2.8	●	-	
Caroga Creek	Palatine	Montgomery	3.6	●	+/-	
Mother Creek	St Johnsville	Montgomery	3.7	●	+/-	
Mill Creek	Palatine	Montgomery	4.6	●	-	

Visually Sensitive Resource	Location		Distance ¹ Miles from Nearest Project Component	Distance Zone ● Foreground ● Midground ● Background	Project Visibility	
	Town	County			+Visible - Not Visible +/- Partially Visible	Preliminary Topographic/Vegetation Viewshed
Golf Courses						
Canajoharie Country Club	Canajoharie	Montgomery	0.1	•	+/-	
Trails						
None Identified in Study Area						
Schools and Colleges						
Fort Plain Junior-Senior High School	Minden	Montgomery	1.0	●	-	
Harry Hoag Elementary School	Minden	Montgomery	1.0	●	+/-	
Canajoharie Central School District	Canajoharie	Montgomery	1.3	●	-	
Sharon Springs Central School	Sharon	Schoharie	4.9	•	-	
Other Resources of Local Importance						
None Identified in Study Area						

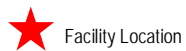
¹ For large areas and linear sites, approximate distance to the nearest turbine was measured from the respective area's closest point.



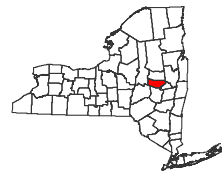
Mohawk Solar

Towns of Canajoharie and Minden, Montgomery County

Figure 1: Regional Facility Location



Facility Location



www.edrdpc.com

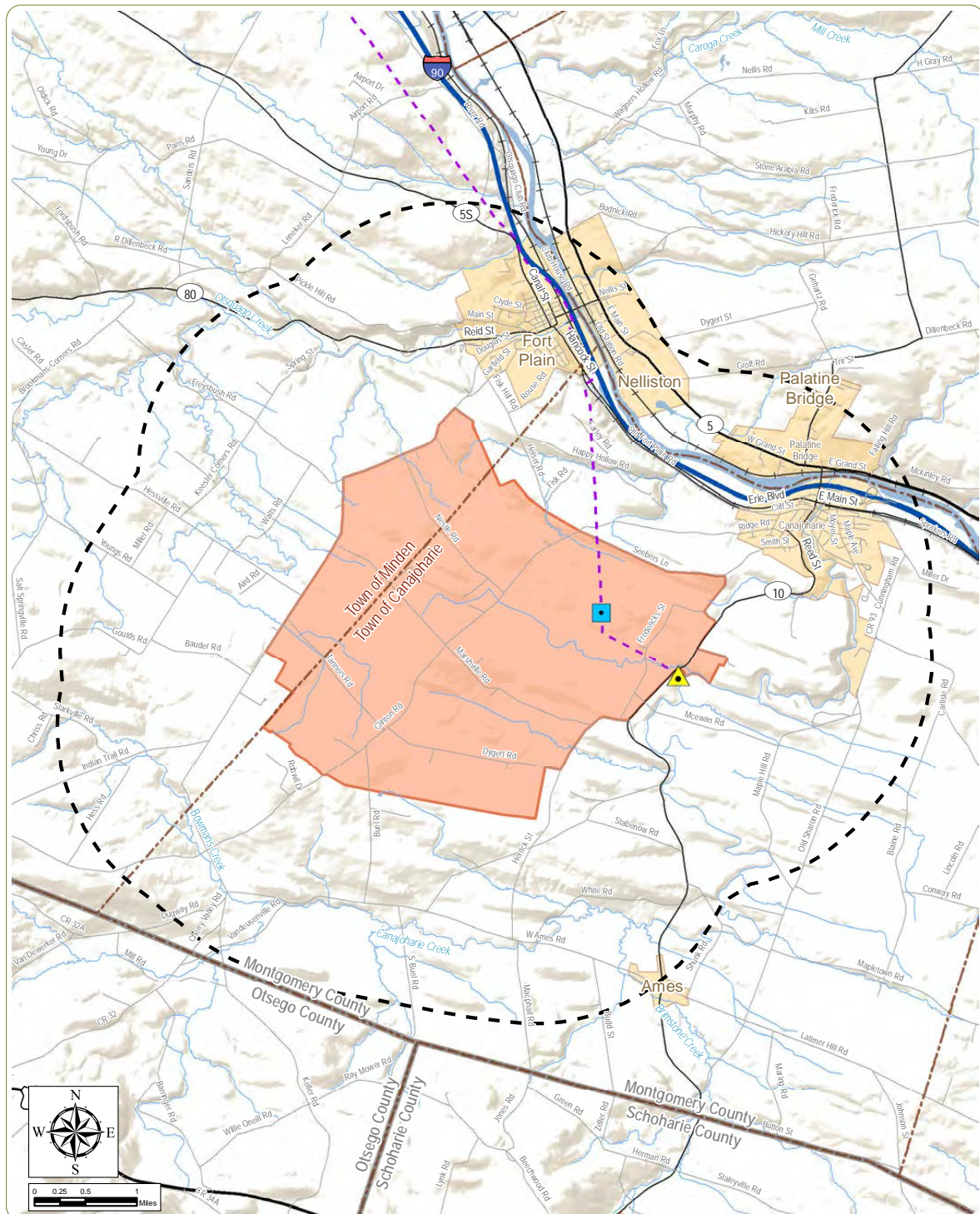
Notes: 1. Basemap: ESRI ArcGIS Online "World Terrain Base" Map Service and ESRI StreetMap North America, 2012.
2. This map was generated in ArcMap on September 18, 2017.
3. This is a color graphic. Reproduction in grayscale may misrepresent the data.

Mohawk Solar

Towns of Canajoharie, and Minden, Montgomery County, New York

Visual Impact Assessment | Appendix F (i): Visual Outreach Letter and Accompanying Documents





Mohawk Solar

Towns of Canajoharie and Minden,
Montgomery County, New York

Figure 2: Facility Area

Notes: 1. Basemap: ESRI ArcGIS Online "World Imagery" map service and ESRI StreetMap North America, 2012.
2. This map was generated in ArcMap on September 18, 2017.
3. This is a color graphic. Reproduction in grayscale may misrepresent the data.

- Existing Substation
- Proposed Point-of-Interconnect Substation
- Facility Area
- 2 Mile Article 10 Study Area
- Town Boundary
- St. Johnsville-Marshville 115-kV Line



www.edrdpc.com

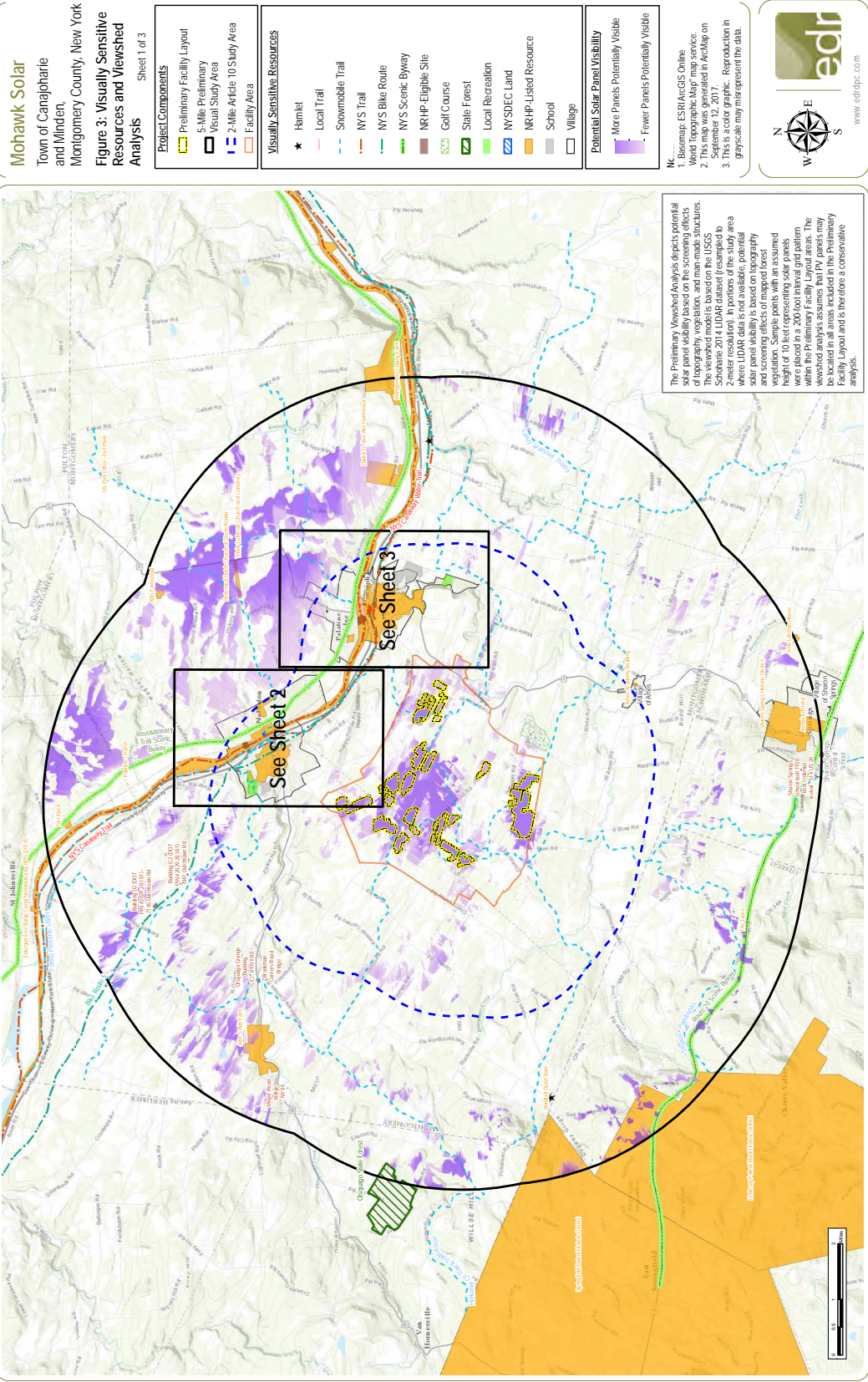
Mohawk Solar

Towns of Canajoharie, and Minden, Montgomery County, New York

Visual Impact Assessment | Appendix F (i): Visual Outreach Letter and Accompanying Documents

Sheet 13 of 16





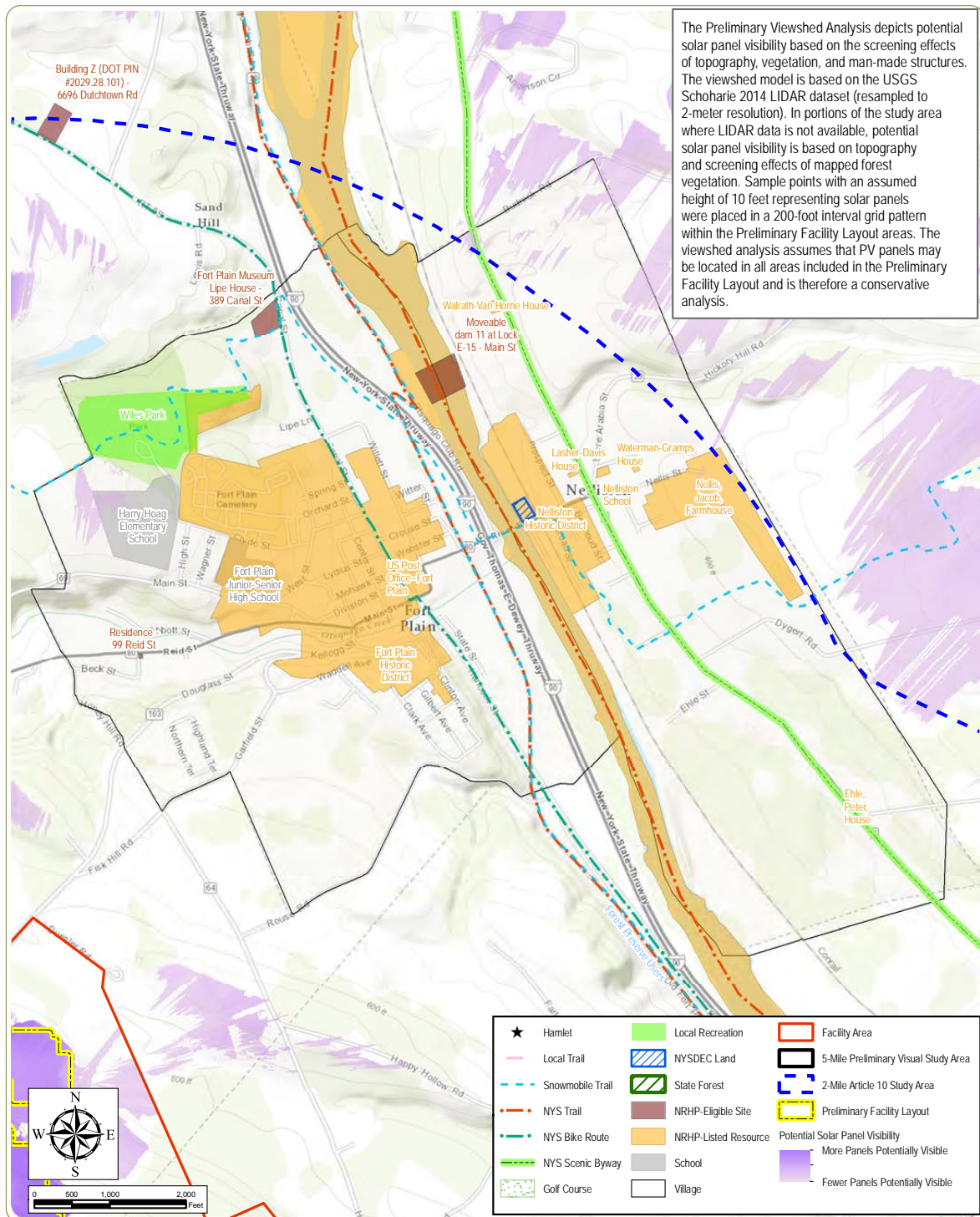
Mohawk Solar

Towns of Canajoharie, and Minden, Montgomery County, New York

Visual Impact Assessment | Appendix F (i): Visual Outreach Letter and Accompanying Documents

Sheet 14 of 16



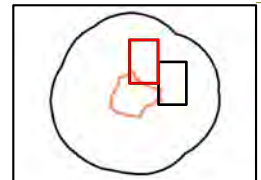


Mohawk Solar
Town of Canajoharie and Minden,
Montgomery County, New York

Sheet 2 of 3

Figure 3: Visually Sensitive Resources and Viewshed Analysis

Notes: 1. Basemap: ESRI ArcGIS Online "World Topographic Map" map service.
2. This map was generated in ArcMap on September 12, 2017.
3. This is a color graphic. Reproduction in grayscale may misrepresent the data.

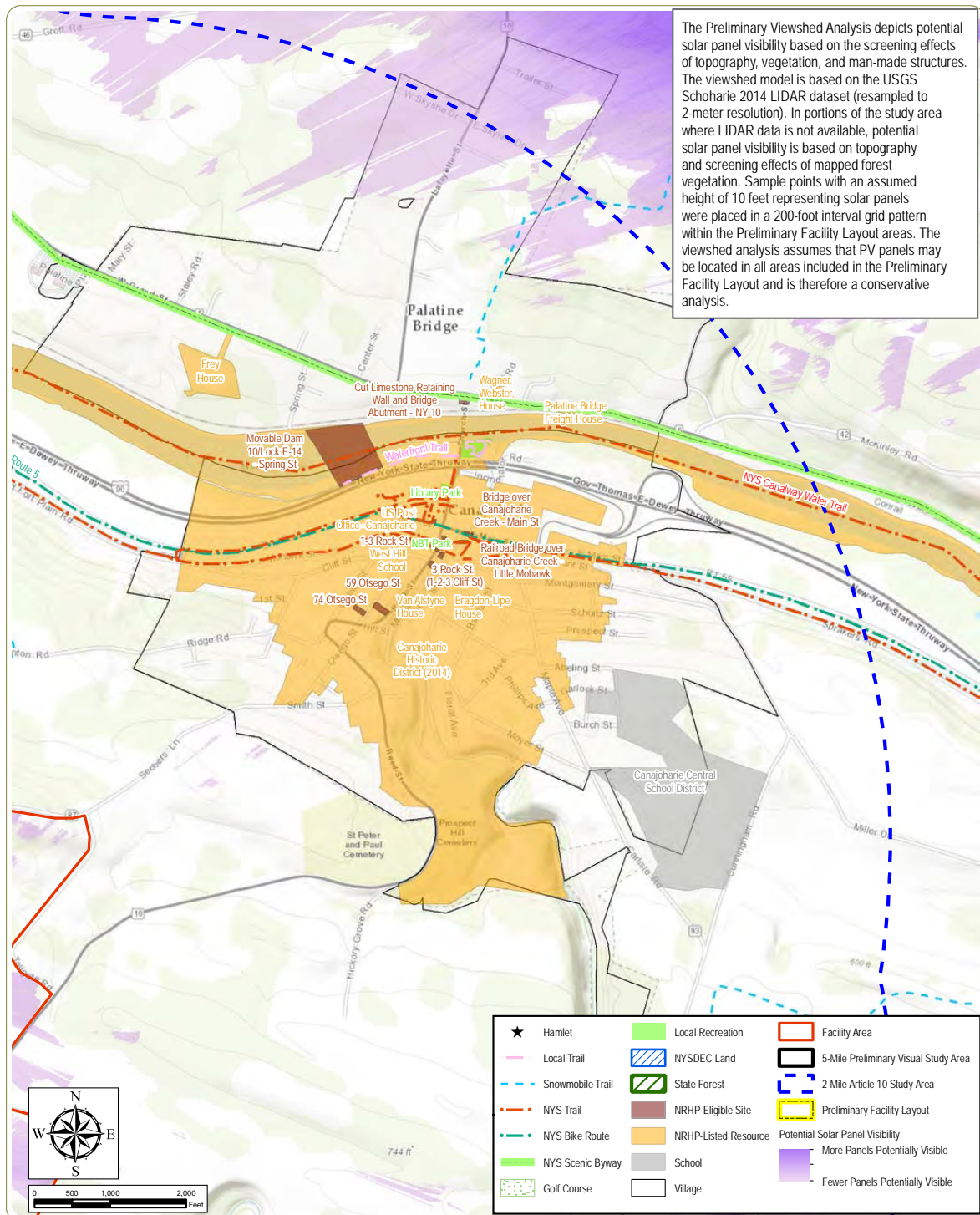


Mohawk Solar

Towns of Canajoharie, and Minden, Montgomery County, New York

Visual Impact Assessment | Appendix F (i): Visual Outreach Letter and Accompanying Documents



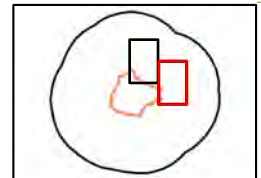


Mohawk Solar
Town of Canajoharie and Minden,
Montgomery County, New York

Sheet 3 of 3

Figure 3: Visually Sensitive Resources and Viewshed Analysis

Notes: 1. Basemap: ESRI ArcGIS Online "World Topographic Map" map service.
2. This map was generated in ArcMap on September 12, 2017.
3. This is a color graphic. Reproduction in grayscale may misrepresent the data.



Mohawk Solar

Towns of Canajoharie, and Minden, Montgomery County, New York

Visual Impact Assessment | Appendix F (i): Visual Outreach Letter and Accompanying Documents



Respondant	Agency	Date of Receipt	Request	Action/Notes
Ellen Pope	OTSEGO 2000	12.13.2017	State Route 20 Scenic Byway	will include in recommended viewpoints
			NRHP - Tepee	will include in recommended viewpoints

Mohawk Solar

Towns of Canajoharie, and Minden, Montgomery County, New York

Visual Impact Assessment | Appendix F (ii): Visual Outreach Letter Response Matrix

Sheet 1 of 1





Environmental Design & Research,
Landscape Architecture, Engineering & Environmental Services, D.P.C.
217 Montgomery Street, Suite 1000, Syracuse, New York 13202
P. 315.471.0688 • F. 315.471.1061 • www.edrdpc.com

April 2, 2018

**Municipal Planning Representatives
Per Distribution List**

RE: Mohawk Solar (DPS Case 17-F-0182)
Recommended Viewpoints - Official Request for Information

Dear Municipal Planning Representative:

As you are aware, Mohawk Solar, LLC ("the Applicant") is proposing to construct a 90.5 megawatt (MW) solar power facility ("the Facility") in the Towns of Canajoharie and Minden. In accordance with the Article 10 regulations, the Applicant has prepared a Public Involvement Program ("PIP") plan (filed May 2017) and a Preliminary Scoping Statement ("PSS") (filed October 2017). Links to these documents are available on the Project's website at <http://avangridren.com/mohawksolar>. The purpose of this letter is to request information related to the environmental review and permitting for the Facility. Specifically, this letter requests your recommendations for important viewpoints that we should consider for use as potential visual simulations/renderings and requests your participation in an online webinar to discuss potential viewpoints. Information regarding participation in the webinar and response period can be found at the conclusion of this letter.

The Applicant is currently undertaking studies to assist in evaluating the potential environmental impacts of the proposed Facility, which includes a Visual Impact Assessment (VIA), an essential component of Exhibit 24 of the Article 10 Application. A previous VIA-related Visual Outreach letter was circulated on October 18, 2017 and asked for input regarding the identification of visually sensitive sites and/or areas. This letter serves as a follow-up to the initial outreach letter and summarizes the VIA analyses conducted by the Applicant to date. In addition, this letter includes recommendations for viewpoints (or photo locations) for which photo-realistic visual simulations of the Facility and Facility components will be prepared.

The selection of viewpoints to be used in the development of visual simulations includes consideration of a number of factors, including:

- The locations of visually sensitive resources/sites, including those identified by the NYS Department of Public Service (DPS) and other stakeholders.
- The definition of Landscape Similarity Zones.
- The predicted visibility of the Facility based on viewshed analysis.
- The availability of open views towards the proposed Facility as determined by field review/site visits.

Each of these factors are briefly summarized below:

[Landscape Architecture • Civil Engineering • Regulatory Compliance • Ecological Resource Management
Cultural Resource Management • Visual Impact Assessment • Community Planning • Golf Course Architecture]

Mohawk Solar

Towns of Canajoharie, and Minden, Montgomery County, New York

Visual Impact Assessment | Appendix F (iii): Recommended Viewpoint Letter and Accompanying Documents

Sheet 1 of 3



Visual Study Area and Visually Sensitive Sites

The VIA evaluates the visual study area which comprises a 5-mile radius from any Facility component ("the Study Area"). In addition, based on input received from stakeholders, portions of U.S. Route 20 extending for approximately 1-mile east and west from the 5-mile Study Area will also be evaluated. The Study Area boundaries for the Facility are depicted on the map entitled "Project Visibility and Recommended Viewpoint Locations" that can be found online at the following web address : <https://edrdoc.box.com/v/mohawksolarvisual>.

Visually sensitive sites and areas have been identified based on the requirements of Article 10, part 1001.24 (b)(4)(ii) as well as the Department of Environmental Conservation (DEC) in the Program Policy entitled Assessing and Mitigating Visual Impacts¹. In addition, comments on the PIP, PSS, and Visual Outreach letter have been reviewed with specific attention given to comments regarding visual impacts. Such comments include those from the DPS, NYS Office of Parks, Recreation, and Historic Preservation; the Towns of Minden and Canajoharie, and Otsego 2000.

Landscape Similarity Zones

Five discrete Landscape Similarity Zones, based on the similarity of various landscape characteristics, landforms, vegetation, water, and land use, were identified within the Facility's Study Area. These landscape Similarity Zones include: Rural Upland/Agricultural; Forest; Mohawk Valley; Village; and Transportation Corridor, all of which are depicted on the map entitled "Project Visibility and Recommended Viewpoint Locations", found online at the web address specified above. The Landscape Similarity Zones will be further described in the VIA included as an Appendix to the Article 10 Application.

Viewshed Analysis

A preliminary viewshed analysis has been prepared for the Facility (see map online entitled "Project Visibility and Recommended Viewpoint Locations"). The viewshed analysis depicts potential visibility of the Facility's components based on consideration of the screening effect of topography, vegetation and structures. Consequently, being within the preliminary viewshed does not necessarily equate to actual Facility visibility. Regardless, the preliminary viewshed analysis provides an effective prediction of potential Facility visibility. The methods and results of the preliminary viewshed analysis will be more fully described in the VIA.

Field Review/Site Visits

EDR personnel conducted photography site visits within the Study Area in October and November 2017. The site visits resulted in photographs from 153 representative viewpoints. The viewpoints document potential visibility of the Facility from adjacent visually sensitive resources, areas of high public use, and representative LSZs within the Study Area. Weather conditions present during the site visit consisted of fall leaf-off conditions with mostly sunny skies. A photo from each viewpoint visited during the site visit is included within the "Viewpoints photolog", found online at the web address listed on page 2 of this letter.

Recommendations for Visual Simulations

EDR anticipates preparing approximately 10 visual simulations, which will depict proposed Facility components from representative distances and a range of visual settings within the Study Area. The final selection of viewpoints will be

¹ The DEC Program Policy *Assessing and Mitigating Visual Impacts* was issued on July 31, 2000 and can be reviewed here: http://www.dec.ny.gov/docs/permits_ej_operations_pdf/visual2000.pdf.

April 2, 2018

determined based on the proposed Facility layout to ensure that the recommended viewpoints/photographs appropriately address the visual effect of the Facility and its components. EDR has identified 15 candidate viewpoints (see Table 1 and accompanying photologs online) that are representative of the range and types of views that will be selected for simulations. Based on EDR's experience, the recommended simulation viewpoints will be adequate for characterizing potential visibility of the Facility and its components and evaluating the Facility's potential visual effect.

Feedback Request

Mohawk Solar, LLC is formally requesting the feedback of agencies and municipal planning representatives regarding the recommended viewpoints for visual simulations. Please review the list of recommended viewpoints listed in Table 1, depicted on "Project Visibility and Recommended Viewpoint Locations", and shown in the "Photolog of Recommended Viewpoints", all located here: <https://edrdpc.box.com/v/mohawksolarvisual>. Mohawk Solar will be hosting an online webinar to discuss the visual studies conducted to date and request feedback on the recommended viewpoints. The webinar is open to all parties receiving this letter and will be held on Wednesday April 11, 2018 at 3:30 pm. It is predicted the webinar will last for approximately one hour. If you are interested in attending the webinar, please send an email to the address listed below. A follow up email will be sent prior to the webinar with a calendar invitation, and the pertinent information needed to participate.

If you do not choose to participate in the webinar but would like to provide comments or feedback regarding the visual study, please contact Matthew Robinson by May 2, 2018:

- Via email at mrobinson@edrdpc.com.
Please type "Mohawk Solar - Visual Resources" in the subject line, or
- Via written letter to:
Environmental Design & Research, Landscape Architecture, Engineering, & Environmental Services, D.P.C.
Attn: Matthew Robinson
217 Montgomery Street, Suite 1000
Syracuse, New York 13202

We sincerely appreciate your assistance and input,



Matthew Robinson

Environmental Design & Research, Landscape Architecture, Engineering, & Environmental Services, D.P.C.
On behalf of Mohawk Solar, LLC

Materials Posted on Box Site: <https://edrdpc.box.com/v/mohawksolarvisual>

- Recommended Viewpoint Table
- Project Visibility and Recommended Viewpoint Locations map
- Photolog of Recommended Viewpoints
- Viewpoint Photolog



Environmental Design & Research,
Landscape Architecture, Engineering & Environmental Services, D.P.C.
217 Montgomery Street, Suite 1000, Syracuse, New York 13202
P. 315.471.0688 • F. 315.471.1061 • www.edrdpc.com

memorandum

To: Mohawk Solar Project Team **EDR Project No:** 16044
From: Samantha Holcomb, EDR
Date: April 12, 2018
Reference: Mohawk Solar Viewpoint Selection Webinar Minutes

Comments:

Participants:

1. Matthew Robinson, EDR
2. Samantha Holcomb, EDR
3. Joe Green, CES
4. Mike Clayton, Avangrid Renewables
5. Walter Meisner, Avangrid Renewables
6. Weston Davies, NYSOPRHP
7. Beth Cumming, NYSOPRHP
8. Andy Davis, NYS DPS
9. Marcy Sammons, NYS DPS
10. Aaron McNamara, Southern Tier East Regional Planning and Development Board
11. Tolga Morawski, Village of Fort Plain Planning Board
12. Kelly Farquhar, Montgomery County Historian
13. Ryan Weitz, Engineer at Barton and Loguidice
14. Karen Sullivan, Otsego County Planning Department
15. Danny Lapin, Otsego County Planning Association
16. Eileen Page, Otsego2000

The webinar began with introductions and an explanation of the Project Visibility Map and the Project's Landscape Similarity Zones (LSZs), followed by a discussion and explanation of the proposed viewpoints. There was some concern regarding the timing of viewpoint selection and simulation selection, and confusion about the purpose of the webinar, as some participants thought they would be reviewing and commenting on simulations created for the Project. Staff from the NYS DPS asked for a status update on the NYSOPRHP's review and suggestion(s) of historical sites with viewshed or visibility concerns that may potentially be added to the viewpoints selected. Staff from the NYSOPRHP responded that they are currently reviewing the submittal and photographs they received and the Project Team should have a response within a few weeks. Finally, the attorney representing the Towns of Canajoharie and Minden asked if proposed mitigation measures would be shown in the simulations, and asked for a simulation to include panels based on the Towns' setbacks, in the event the Applicant requests a waiver. He also expressed a desire to ensure the VIA included views that could be seen from neighboring residential properties, and asked that the residential locations be included on the Project Visibility Map.

Copies To: File

[Landscape Architecture • Civil Engineering • Regulatory Compliance • Ecological Resource Management
Cultural Resource Management • Visual Impact Assessment • Community Planning • Self-Governance Architecture]

Mohawk Solar

Towns of Canajoharie, and Minden, Montgomery County, New York

Visual Impact Assessment | Appendix F (iv): Webinar Materials

Sheet 1 of 1



Appendix G

Conceptual Planting Modules

WOODY PLANT SPECIES PROPOSED:

Latin	Common	Mature Size
<i>Acer rubrum</i>	Red Maple	40-70' H x 15-25' W
<i>Acer saccharum</i>	Sugar Maple	60-75' H x 40-50' W
<i>Amelanchier stolonifera</i>	Running Serviceberry	4-5' H x 4-5' W
<i>Aronia arbutifolia</i>	Red Chokeberry	6-10' H x 6-10' W
<i>Crataegus crus-galli</i>	Cockspur Hawthorn	25-35' H x 25-35' W
<i>Diervilla lonicera</i>	Northern Bush-Honeysuckle	2-3' H x 3-4' W
<i>Hamamelis virginiana</i>	Witch Hazel	15-20' H x 10-15' W
<i>Picea glauca</i>	White Spruce	40-60' H x 20-25' W
<i>Pinus strobus</i>	White Pine	70-80' H x 20-35' W
<i>Liriodendron tulipifera</i>	Tulip Tree	60-90' H x 30-50' W
<i>Quercus coccinea</i>	Scarlet Oak	50-70' H x 40-50' W
<i>Rhus typhina</i>	Staghorn Sumac	10-20' H x 20-30' W
<i>Tilia americana</i>	American Basswood	50-80' H x 30-50' W

EXAMPLES OF HERBACEOUS SPECIES LIKELY TO BE USED IN POLLINATOR HABITAT SEED MIX:

Latin	Common	Mature (Summer/Fall) Height
<i>Asclepias syriaca</i>	Common Milkweed	2-3' H
<i>Asclepias tuberosa</i>	Butterflyweed	1-2' H
<i>Coreopsis lanceolata</i>	Laceleaf Coreopsis	1-2' H
<i>Echinacea purpurea</i>	Purple Coneflower	2-5' H
<i>Eutrochium maculatum</i>	Spotted Joe-Pye Weed	4-6' H
<i>Eupatorium perfoliatum</i>	Common Boneset	4-6' H
<i>Monarda fistulosa</i>	Wild Bergamot	2-4' H
<i>Penstemon hirsutus</i>	Hairy Beardtongue	1-2' H
<i>Pycnanthemum tenuifolium</i>	Narrowleaf Mountain Mint	2-3' H
<i>Schizachyrium scoparium</i>	Little Bluestem	2-4' H
<i>Solidago juncea</i>	Early Goldenrod	2-4' H
<i>Vernonia noveboracensis</i>	New York Ironweed	4-6' H
<i>Zizia aurea</i>	Golden Alexanders	1-3' H

Mohawk Solar

Towns of Canajoharie, and Minden, Montgomery County, New York

Visual Impact Assessment | Appendix G (i): Conceptual Planting Plan - Master Plant List

Sheet 1 of 2





Viewpoint #1

View looking southwest from State Route 10 (Ames Road), north of McEwan Road, at wildflowers and fencing, in the Town of Canajoharie, in the Rural Uplands LSZ.



Viewpoint #2

View looking southeast from McEwan Road, at agricultural vernacular, in the Town of Canajoharie, in the Rural Uplands LSZ.



Viewpoint #3

View looking northeast from McEwan Road, at Residential hedgerow, in the Town of Canajoharie, in the Rural Uplands LSZ.



Viewpoint #4

View looking south from McEwan Road, at roadside White Pine (*Pinus strobus*), in the Town of Canajoharie, in the Rural Uplands LSZ.



Viewpoint #5

View looking North from County Road 94 (Old Sharon Road), at successional field vegetation, in the Town of Canajoharie, in the Rural Uplands LSZ.



Viewpoint #6

View looking northwest from County Road 94 (Old Sharon Road), at successional field vegetation with tree clumping, in the Town of Canajoharie, in the Rural Uplands LSZ.

Mohawk Solar

Towns of Canajoharie, and Minden, Montgomery County, New York

Visual Impact Assessment | Appendix G (ii): Mitigation Photolog

Sheet 1 of 7





Viewpoint #7

View looking southeast from County Road 94 (Old Sharon Road), at typical farmstead with cemetery plot, in the Town of Canajoharie, in the Rural Uplands LSZ.



Viewpoint #8

View looking southwest from County Road 89 (Latimer Hill Road), at roadside shrubs, in the Town of Canajoharie, in the Rural Uplands LSZ.



Viewpoint #9

View looking east from County Road 89 (Latimer Hill Road), at farm vernacular, in the Town of Canajoharie, in the Rural Uplands LSZ.



Viewpoint #10

View looking southwest from County Road 88 (West Ames Road), at roadside agrarian fencing, in the Town of Canajoharie, in the Rural Uplands LSZ.



Viewpoint #11

View looking southwest from County Road 88 (West Ames Road), at roadside agrarian fencing, in the Town of Canajoharie, in the Rural Uplands LSZ.



Viewpoint #12

View looking northeast from State Route 163 (Sprout Brook Road), at roadside pine/evergreen hedgerow, in the Town of Canajoharie, in the Rural Uplands LSZ.

Mohawk Solar

Towns of Canajoharie, and Minden, Montgomery County, New York

Visual Impact Assessment | Appendix G (ii): Mitigation Photolog

Sheet 2 of 7





Viewpoint #13

View looking northwest from County Route 85 (Dygart Road), at roadside deciduous hedgerow, in the Town of Canajoharie, in the Rural Uplands LSZ.



Viewpoint #14

View looking southeast from County Route 84 (Buel Road), at successional field, in the Town of Canajoharie, in the Rural Uplands LSZ.



Viewpoint #15

View looking east from County Route 84 (Buel Road), at roadside agrarian character, in the Town of Canajoharie, in the Rural Uplands LSZ.



Viewpoint #16

View looking north from Tanners Road, at open agricultural field through hedgerow, in the Town of Canajoharie, in the Rural Uplands LSZ.



Viewpoint #17

View looking north from State Route 163 (Cherry Valley Road), at roadside Sumac and wildflowers, in the Town of Minden, in the Rural Uplands LSZ.



Viewpoint #18

View looking south from Nestle Road, at perpendicular roadside hedgerow, in the Town of Minden, in the Rural Uplands LSZ.

Mohawk Solar

Towns of Canajoharie, and Minden, Montgomery County, New York

Visual Impact Assessment | Appendix G (ii): Mitigation Photolog

Sheet 3 of 7





Viewpoint #19

View looking west from Nestle Road, at open roadside agrarian field, in the Town of Minden, in the Rural Uplands LSZ.



Viewpoint #20

View looking southeast from Nestle Road, at roadside shrub clumping, in the Town of Minden, in the Rural Uplands LSZ.



Viewpoint #21

View looking east from Nestle Road, at existing electrical infrastructure, in the Town of Canajoharie, in the Rural Uplands LSZ.



Viewpoint #22

View looking east from Nestle Road, at existing electrical infrastructure, in the Town of Canajoharie, in the Rural Uplands LSZ.



Viewpoint #23

View looking west from County Route 80 (Clinton Road), at existing electrical infrastructure, in the Town of Canajoharie, in the Rural Uplands LSZ.



Viewpoint #24

View looking southeast from County Route 80 (Clinton Road), at successional field with pond, in the Town of Canajoharie, in the Rural Uplands LSZ.

Mohawk Solar

Towns of Canajoharie, and Minden, Montgomery County, New York

Visual Impact Assessment | **Appendix G (ii): Mitigation Photolog**



Viewpoint #25

View looking southeast from County Route 87 (Seebers Lane), at open middle ground with background mountain range, in the Town of Canajoharie, in the Rural Uplands LSZ.



Viewpoint #26

View looking southwest from County Route 87 (Seebers Lane), at open middle ground with background mountain range, in the Town of Canajoharie, in the Rural Uplands LSZ.



Viewpoint #27

View looking south from County Route 87 (Seebers Lane), at open middle ground with background mountain range, in the Town of Canajoharie, in the Rural Uplands LSZ.



Viewpoint #28

View looking west from State Route 10 (Ames Road), at existing electrical infrastructure, in the Town of Canajoharie, in the Rural Uplands LSZ.



Viewpoint #29

View looking west from Fredericks Street, at foreground crop field with middle ground hedgerow, in the Town of Canajoharie, in the Rural Uplands LSZ.



Viewpoint #30

View looking east from Fredericks Street, at existing electrical infrastructure, in the Town of Canajoharie, in the Rural Uplands LSZ.

Mohawk Solar

Towns of Canajoharie, and Minden, Montgomery County, New York

Visual Impact Assessment | Appendix G (ii): Mitigation Photolog

Sheet 5 of 7





Viewpoint #31

View looking west from County Route 86 (Marshville Road), at typical agrarian field with windbreaks, in the Town of Canajoharie, in the forest LSZ.



Viewpoint #32

View looking west from County Route 86 (Marshville Road), at typical agrarian field with windbreaks, in the Town of Canajoharie, in the Rural Uplands LSZ.



Viewpoint #33

View looking southeast from G Bowerman Road, at typical agrarian field with windbreaks, in the Town of Canajoharie, in the Rural Uplands LSZ.



Viewpoint #34

View looking southeast from County Route 86 (Marshville Road), at broken roadside hedgerow, in the Town of Canajoharie, in the Rural Uplands LSZ.



Viewpoint #35

View looking west from County Route 86 (Marshville Road), at roadside farm equipment, in the Town of Canajoharie, in the Rural Uplands LSZ.



Viewpoint #36

View looking northwest from County Route 86 (Marshville Road), at roadside hedgerow, in the Town of Minden, in the Rural Uplands LSZ.

Mohawk Solar

Towns of Canajoharie, and Minden, Montgomery County, New York

Visual Impact Assessment | Appendix G (ii): Mitigation Photolog

Sheet 6 of 7





Viewpoint #37

View looking northeast from Dunkel Rd, at dirt road with open roadside and hedgerow, in the Town of Minden, in the Rural Uplands LSZ.



Viewpoint #38

View looking northeast from County Route 86 (Marshville Road), at residential backyard, in the Town of Minden, in the Rural Uplands LSZ.

Mohawk Solar

Towns of Canajoharie, and Minden, Montgomery County, New York

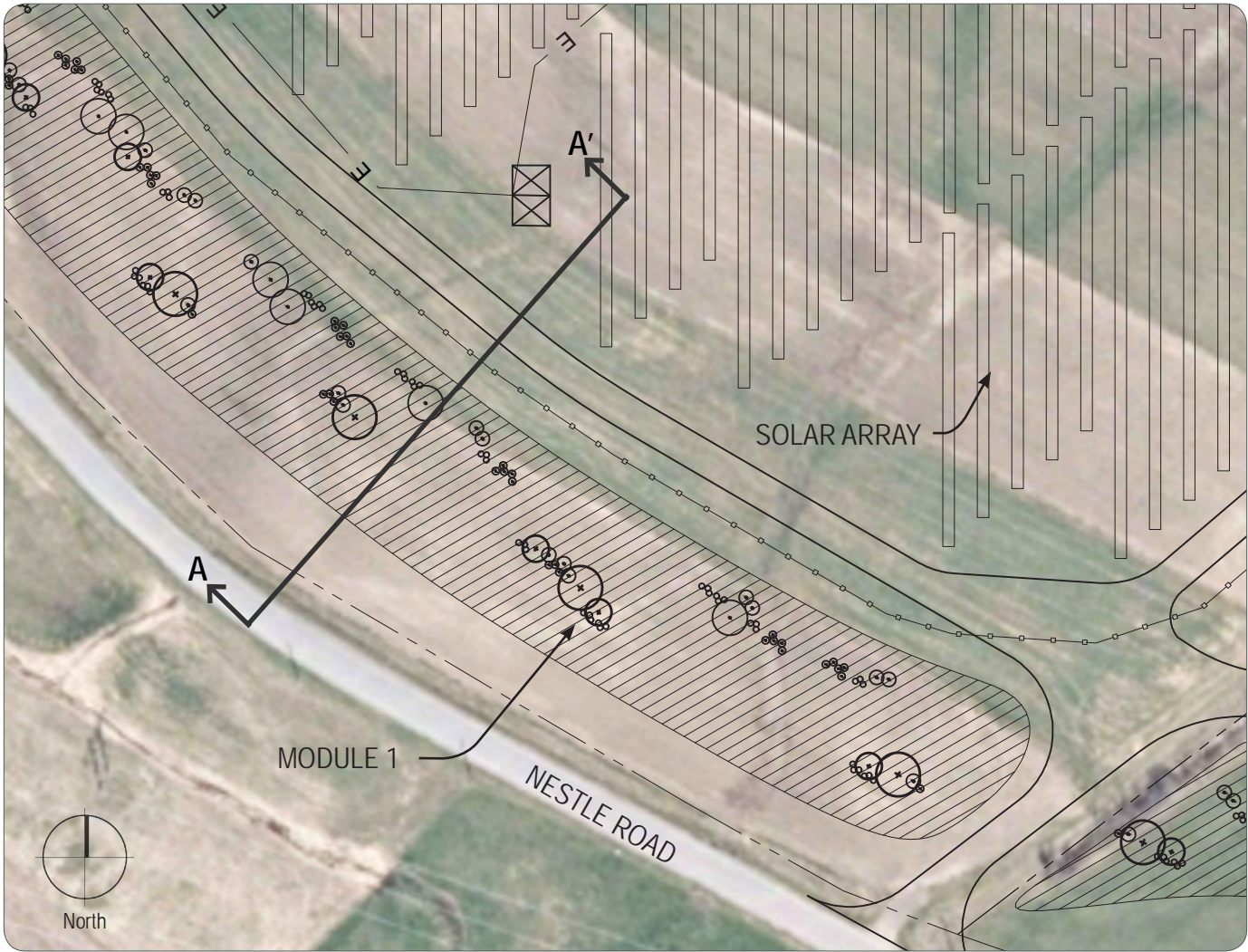
Visual Impact Assessment | **Appendix G (ii):** Mitigation Photolog

Sheet 7 of 7

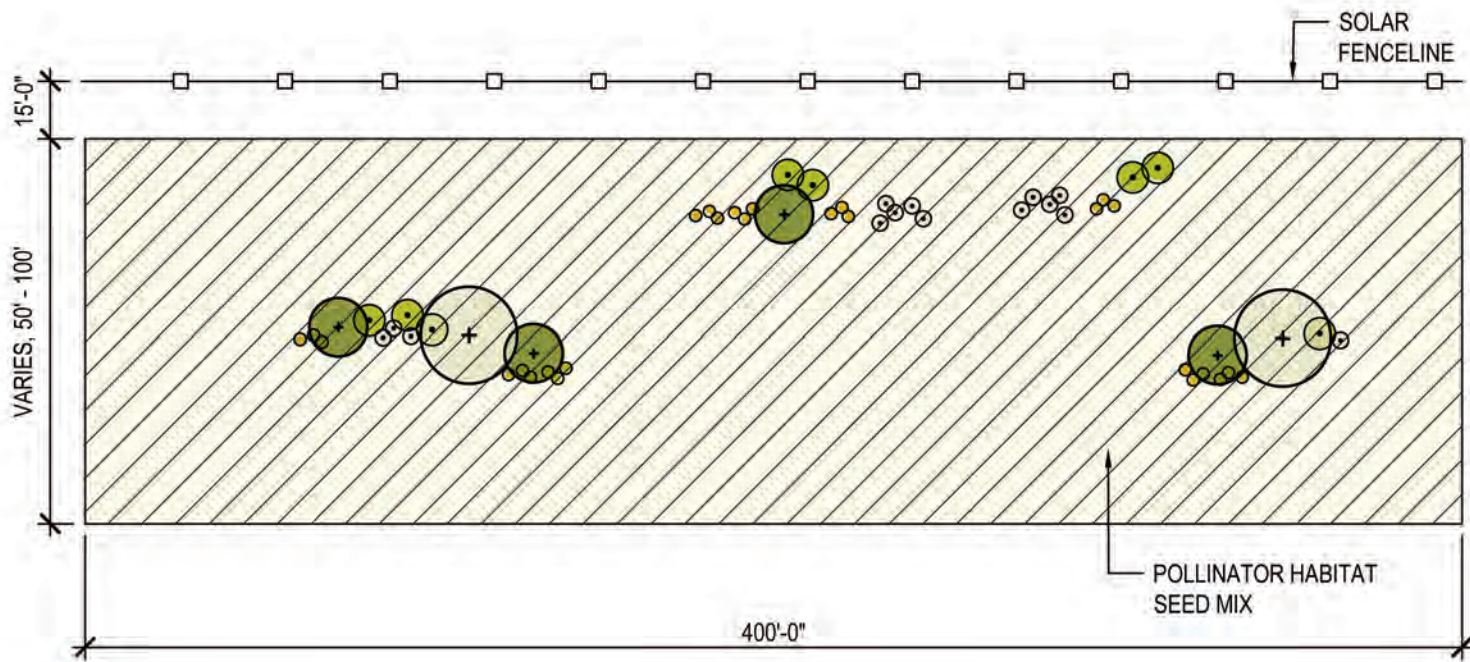


Planting Module 1 - Roadside Enhancement A

Existing Conditions: Agricultural field, no existing hedgerow or vegetation
View: Open views towards agricultural field with array panels
Treatment: Create buffer to soften view of panels within landscape and create additional pollinator habitat

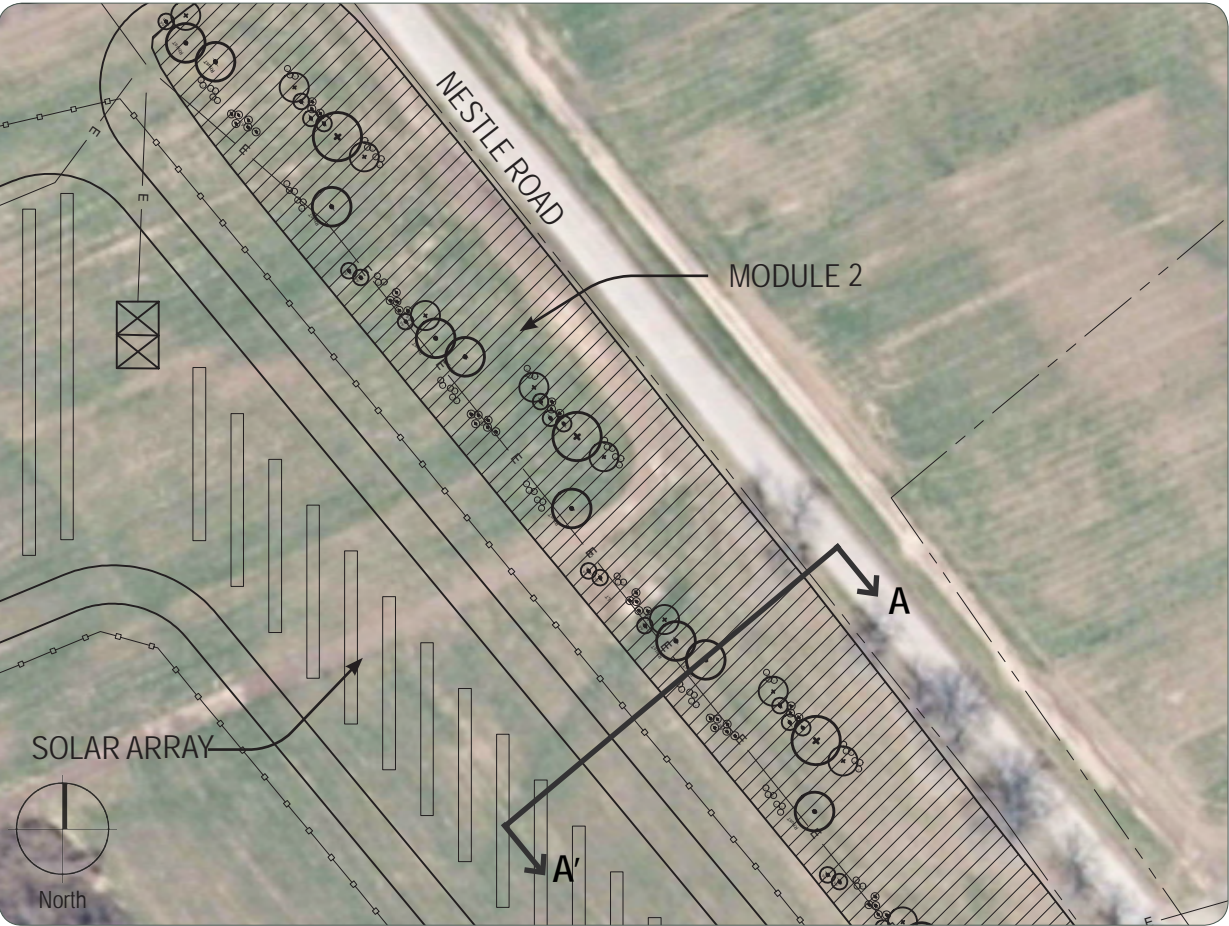


PLANT LIST						
KEY	BOTANICAL NAME	COMMON NAME	SIZE	TYPE	SPACING	MATURE SIZE
	<i>Amelanchier stolonifera</i>	Running Serviceberry	24" ht	#5 cont	4' on center	4-6' H x 4-5' W
	<i>Aronia arbutifolia</i>	Red Chokeberry	4' ht	B&B	5' on center	6-10' H x 6-10' W
	<i>Crataegus crus-galli</i>	Cockspur Hawthorn	1 3/4" cal	B&B	As shown	25-35' H x 25-35' W
	<i>Diervilla lonicera</i>	Bush-Honeysuckle	18" ht	#3 cont	3' on center	2-3' H x 3-4' W
	<i>Rhus typhina</i>	Staghorn Sumac	5' ht	#5 cont	As shown	10-20' H x 20-30' W
	Pollinator Seed Mix		7 lbs per acre			Average 36" H

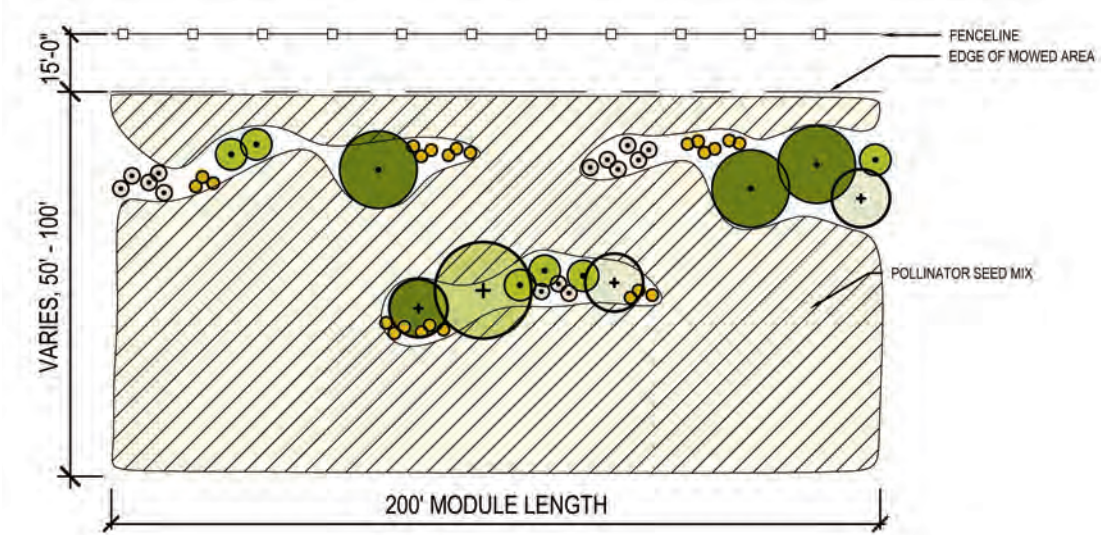


Planting Module 2 - Roadside Enhancement B

Existing Conditions: Residence adjacent to proposed array field, no existing hedgerow
View: Open views towards agricultural field with array panels
Treatment: Create buffer to soften view of panels within landscape



PLANT LIST						
KEY	BOTANICAL NAME	COMMON NAME	SIZE	TYPE	SPACING	MATURE SIZE
	<i>Amelanchier stolonifera</i>	Running Serviceberry	24" ht	#5 cont	4' on center	4-6' H x 4-5' W
	<i>Aronia arbutifolia</i>	Red Chokeberry	4' ht	B&B	5' on center	6-10' H x 6-10' W
	<i>Crataegus crus-galli</i>	Cockspur Hawthorn	1 3/4" cal	B&B	As Shown	25-35' H x 25-35' W
	<i>Diervilla lonicera</i>	Bush-Honeysuckle	18" ht	#3 cont	3' on center	2-3' H x 3-4' W
	<i>Hamamelis virginiana</i>	Common Witch-Hazel	3' ht	B&B	As shown	15-20' H x 10-15' W
	<i>Quercus coccinea</i>	Scarlet Oak	2" cal.	B&B	As Shown	50-70' H x 40-50' W
	<i>Rhus typhina</i>	Staghorn Sumac	5' ht	#5 cont	As shown	10-20' H x 20-30' W
	Pollinator Seed Mix		7 lbs per acre			Average 36" H

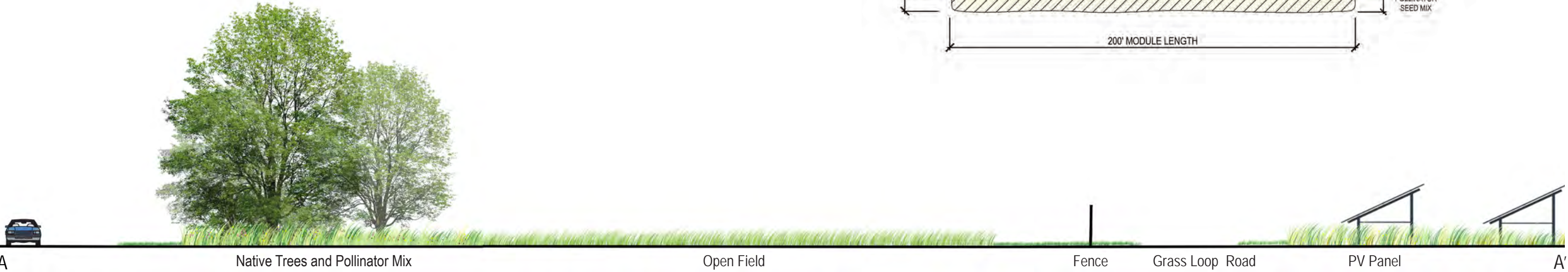
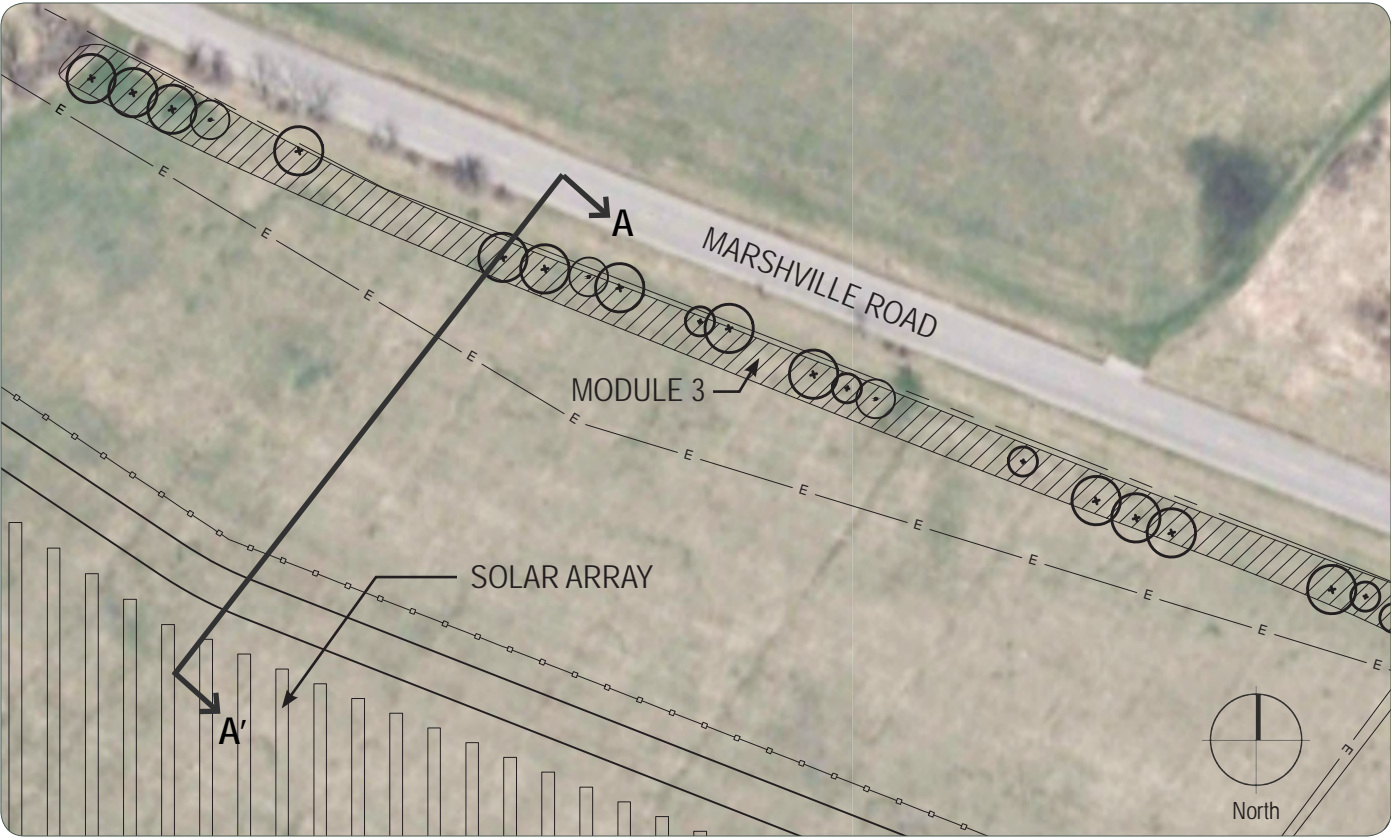


Planting Module 3 - Hedgerow In-fill

Existing Conditions: Residence adjacent to proposed array field, intermittent existing hedgerow

View: Intermittent views towards agricultural field with array panels

Treatment: Fill gaps in trees to soften view of panels within landscape



PLANT LIST						
KEY	BOTANICAL NAME	COMMON NAME	SIZE	TYPE	SPACING	MATURE SIZE
	<i>Acer rubrum*</i>	Red Maple	2" cal.	B&B	As Shown	40-70' H x 15-25' W
	<i>Acer saccharum*</i>	Sugar Maple	2" cal.	B&B	As Shown	60-75' H x 40-50' W
	<i>Crataegus crus-galli</i>	Cockspur Hawthorn	1 3/4" cal.	B&B	As Shown	25-35' H x 25-35' W
	<i>Liriodendron tulipifera*</i>	Tulip Tree	2" cal.	B&B	As Shown	60-90' H x 30-50' W
	<i>Quercus coccinea*</i>	Scarlet Oak	2" cal.	B&B	As Shown	50-70' H x 40-50' W
	<i>Rhus typhina</i>	Staghorn Sumac	5' ht	#5 cont	As Shown	10-20' H x 20-30' W
	<i>Tilia americana*</i>	American Basswood	2" cal.	B&B	As Shown	50-80' H x 30-50' W
	Pollinator Seed Mix		7 lbs per acre		Average 36" H	

*Mixture of approximately 20% each species

Planting Module 4 - Adjacent Resource / Residence Screening

Existing Conditions: Residence or building adjacent to proposed array field, no existing hedgerow
View: Open views towards agricultural field with array panels
Treatment: Create buffer to screen view of panels within landscape



PLANT LIST						
KEY	BOTANICAL NAME	COMMON NAME	SIZE	TYPE	SPACING	MATURE SIZE
	<i>Acer rubrum</i>	Red Maple	2" cal.	B&B	As Shown	40-70" H x 15-25' W
	<i>Crataegus crus-galli</i>	Cockspur Hawthorn	1 3/4" cal.	B&B	As Shown	25-35' H x 25-35' W
	<i>Picea glauca</i>	White Spruce	8' ht	B&B	As Shown	40-60' H x 20-25' W
	<i>Pinus strobus</i>	Eastern White Pine	6' ht.	B&B	As Shown	70-80' H x 20-35' W
	<i>Amelanchier stolonifera</i>	Running Serviceberry	24" ht	#5 cont	4' on center	4-6' H x 4-5' W
	<i>Diervilla lonicera</i>	Bush-Honeysuckle	18" ht	#3 cont	3' on center	2-3' H x 3-4' W
	<i>Rhus typhina</i>	Staghorn Sumac	5' ht	#5 cont	As shown	10-20' H x 20-30' W
	Pollinator Seed Mix		7 lbs per acre			Average 36" H

