

NEW YORK STATE DEPARTMENT OF ENVIRONMENTAL CONSERVATION

Division of Fish, Wildlife and Marine Resources, Bureau of Habitat, Region 4
65561 State Highway 10, Suite 1, Stamford, NY 12167-9503
P: (607) 652-2645 | F: (607) 652-2342
www.dec.ny.gov

ARTICLE 15 JURISDICTIONAL DETERMINATION

County: Montgomery

Town: Canajoharie & Minden

Parcel ID: 77.-2-3.2; 77.-2-16.12; 61.-1-20; 61.-2-24;

77.-1-6.112; 61.-1-24.3; 77.-2-11.1; 77.-2-11.2; 62.-1-31; 77.-2-1; 77.-2-13; 77.-2-15.12; 77.-2-16.2; 77.-2-17.11; 77.-2-6.1; 78.-1-1.1; 78.-1-21; 78.-1-23; 78.-1-25; 78.-1-3.1; 78.-1-39; 78.-1-41; 78.-1-6.2; 78.-1-8; 93.-1-12.1; 93.-1-15.1; 93.-3-1; 93.-3-3; 77.-2-15.2; 78.-1-26.4

Date: May, 2nd 2019

Mohawk Solar LLC
1125 NW Couch Street, Suite 700
Portland, OR 97209

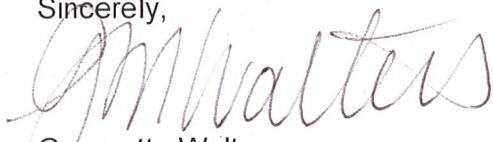
Mohawk Solar LLC,

On February 7th, 2019 I met John Wojcikiewicz from EDR to discuss the proposed Mohawk Solar Farm project in both the town of Canajoharie and Minden parcels identifications referenced above. The purpose of this meeting was to verify the boundaries of the identified wetlands onsite and determine if NYSDEC Article 15 Protections of Waters jurisdiction applies.

Based on the GIS delineation information provided to the agency, our site visit and our state regulated resource data base, there are no jurisdictional New York State article 15 waters on the parcels listed above. However, these waters may still be subject to other jurisdiction under the 401 Clean Water Act.

If you have additional questions or need technical guidance regarding jurisdiction as the project proceeds, please don't hesitate to contact me via the information below.

Sincerely,



Georgette Walters
Biologist 1
NYSDEC Region 4
65561 State Highway 10, Suite 1



Department of
Environmental
Conservation

Stamford, NY 12167-9503

Phone: (607) 652-2637

Fax: (607) 652-2342

Georgette.Walters@dec.ny.gov

NEW YORK STATE DEPARTMENT OF ENVIRONMENTAL CONSERVATION

Division of Fish, Wildlife and Marine Resources, Bureau of Habitat, Region 4
65561 State Highway 10, Suite 1, Stamford, NY 12167-9503
P: (607) 652-2645 | F: (607) 652-2342
www.dec.ny.gov

WETLAND JURISDICTIONAL DETERMINATION

County: Montgomery

Town: Canajoharie & Minden

Parcel ID: 77.-2-3.2; 77.-2-16.12; 61.-1-20; 61.-2-24;

77.-1-6.112; 61.-1-24.3; 77.-2-11.1; 77.-2-11.2; 62.-1-31; 77.-2-1; 77.-2-13; 77.-2-15.12; 77.-2-16.2; 77.-2-17.11; 77.-2-6.1; 78.-1-1.1; 78.-1-21; 78.-1-23; 78.-1-25; 78.-1-3.1; 78.-1-39; 78.-1-41; 78.-1-6.2; 78.-1-8; 93.-1-12.1; 93.-1-15.1; 93.-3-1; 93.-3-3; 77.-2-15.2; 78.-1-26.4

Date: May, 2nd 2019

Mohawk Solar LLC
1125 NW Couch Street, Suite 700
Portland, OR 97209

Mohawk Solar LLC,

On February 7th, 2019 I met John Wojcikiewicz from EDR to discuss the proposed Mohawk Solar Farm project in both the town of Canajoharie and Minden parcels identifications referenced above. The purpose of this meeting was to verify the boundaries of the identified wetlands onsite and determine if NYSDEC Article 24 Freshwater Wetland jurisdiction applies.

Based on the GIS delineation information provided to the agency, our site visit and our state regulated resource data base, there are jurisdictional New York State regulated Article 24 wetlands on portions of the parcels referenced above. Including, newly mapped jurisdictional extensions of regulated Article 24 wetlands onsite. The attached delineation map provided to our office is a confirmation of the jurisdictional boundaries verified on the February 7th, 2019 site visit.

If you have additional questions or need technical guidance regarding jurisdiction as the project proceeds, please don't hesitate to contact me via the information below.

Sincerely,



Georgette Walters
Biologist 1
NYSDEC Region 4



Department of
Environmental
Conservation

65561 State Highway 10, Suite 1
Stamford, NY 12167-9503
Phone: (607) 652-2637
Fax: (607) 652-2342
Georgette.Walters@dec.ny.gov

NYSDEC FRESHWATER WETLAND BOUNDARY VALIDATION

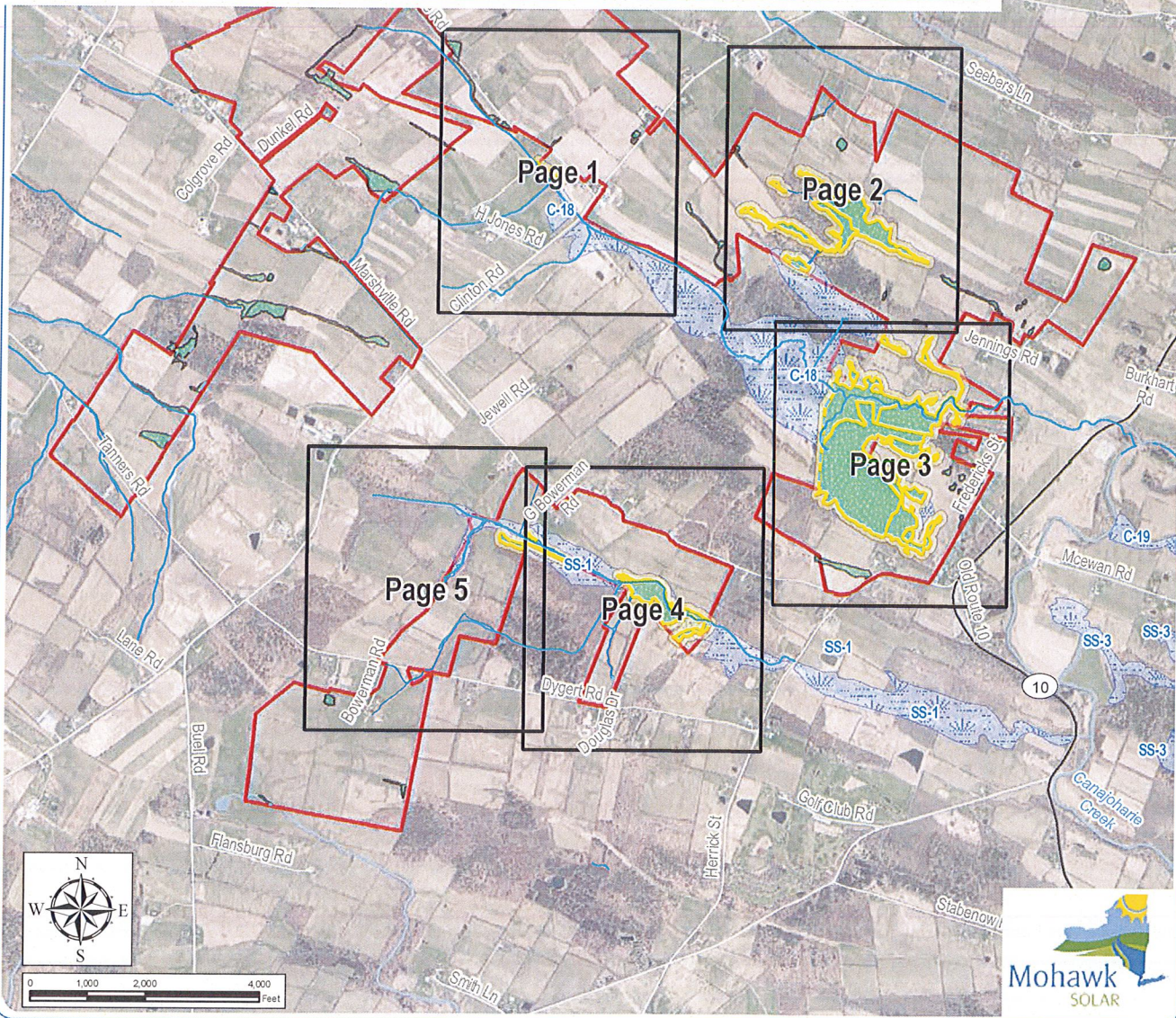
The freshwater wetland boundary as represented on these plans accurately depicts the limits of Freshwater Wetland C-18 & SS-1 as delineated by EDR on 2/7/19

DEC Staff: Georgette Walters 2/7/19 Surveyor/Engineer: Biologist 1

Date Valid: 2/7/19 Expiration Date: 2/7/24 SEAL

Wetland boundary delineations as validated by the New York State Department of Environmental Conservation remain valid for five (5) years unless existing exempt activities, area hydrology, or land use practices change (e.g., agricultural to residential). After five (5) years the boundary must be revalidated by DEC staff. Revalidation may include a new delineation and survey of the wetland boundary.

Any proposed construction, grading, filling, excavating, clearing or other regulated activity in the freshwater wetland or within 100 feet of the wetland boundary as depicted on this plan requires a permit from the NYS Department of Environmental Conservation under Article 24 of the Environmental Conservation Law (Freshwater Wetlands Act) prior to commencement of work.



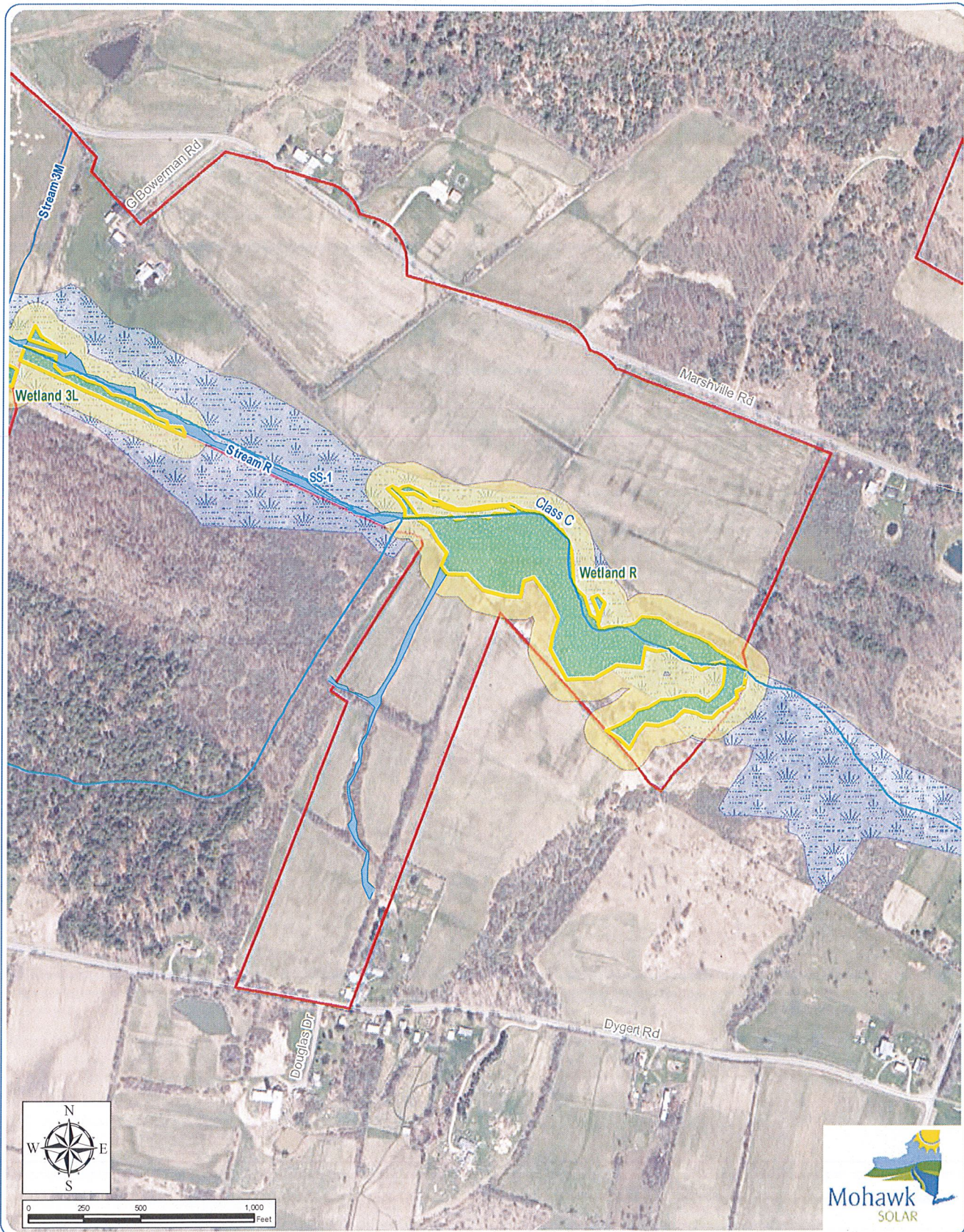
Mohawk Solar

Towns of Canajoharie and Minden, Montgomery County, New York

Assumed NYSDEC-Jurisdictional Wetlands and Streams - Index

Notes: 1. Basemap: NYSDOP *2017 orthoimagery. 2. This map was generated in ArcMap by Environmental Design and Research on February 7, 2019. 3. This is a color graphic. Reproduction in grayscale may misrepresent the data.

-
- Delimited Wetland Continues
 - NYSDEC-Mapped Stream
 - NYSDEC-Mapped Wetland
 - Wetland Study Area
 - Assumed NYSDEC-Jurisdictional Wetland
 - Assumed NYSDEC Jurisdictional 100' Adjacent Area
 - Delimited Wetland
 - Delimited Stream



Mohawk Solar

Towns of Canajoharie and Minden, Montgomery County, New York

Assumed NYSDEC-Jurisdictional Wetlands and Streams Sheet 4 of 5

Notes: 1. Basemap: NYS DOP "2017" orthoimagery. 2. This map was generated in ArcMap by Environmental Design and Research on February 7, 2019. 3. This is a color graphic. Reproduction in grayscale may misrepresent the data.

--- Delineated Wetland Continues

— NYSDEC-Mapped Stream

■ NYSDEC-Mapped Wetland

□ Study Area

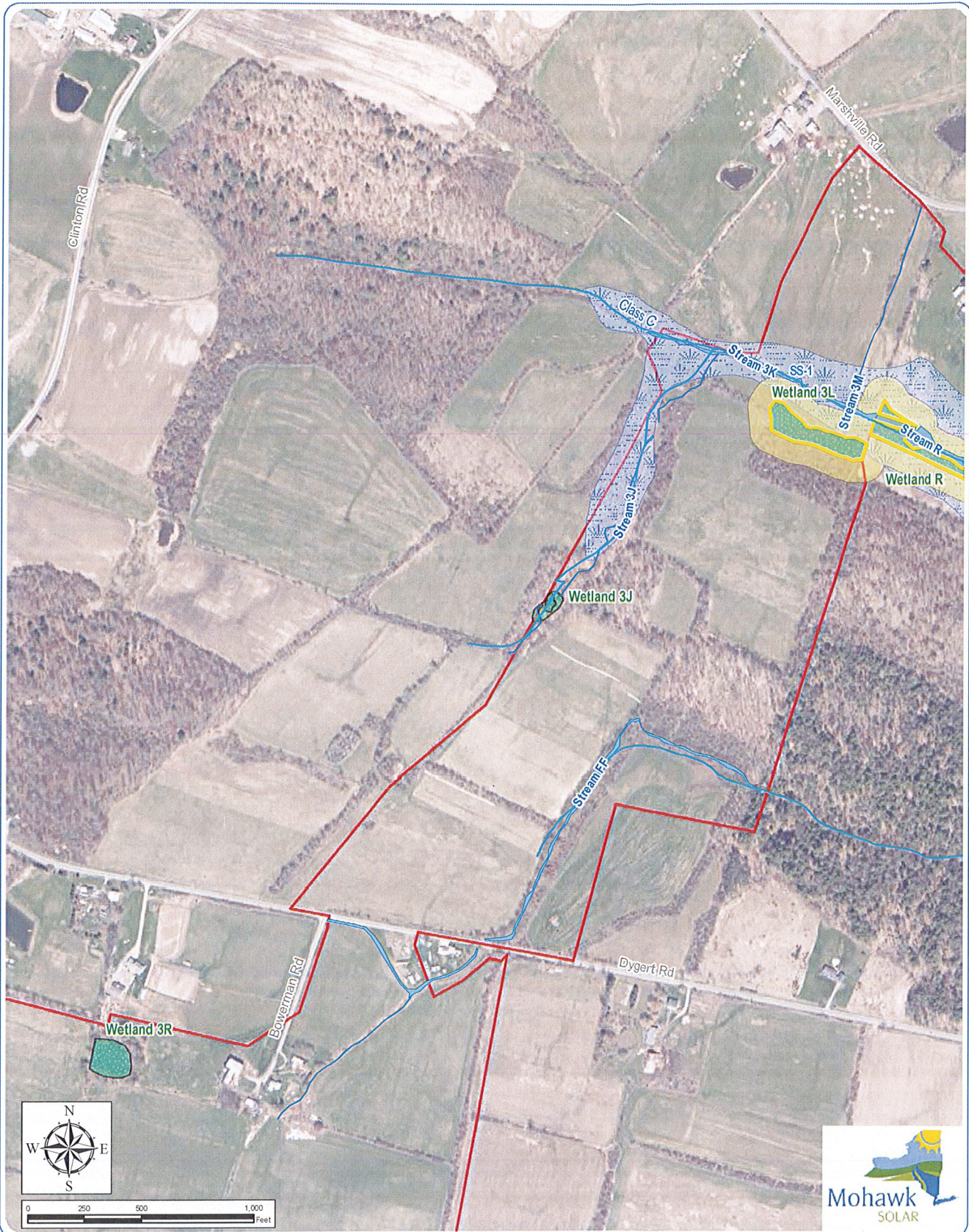
□ Assumed NYSDEC-Jurisdictional Wetland

□ Assumed NYSDEC Jurisdictional 100' Adjacent Area

■ Delineated Wetland

■ Delineated Stream





Mohawk Solar

Towns of Canajoharie and Minden, Montgomery County, New York

Assumed NYSDEC-Jurisdictional Wetlands and Streams Sheet 5 of 5

Notes: 1. Basemap: NYS DOP "2017" orthoimagery. 2. This map was generated in ArcMap by Environmental Design and Research on February 7, 2019. 3. This is a color graphic. Reproduction in grayscale may misrepresent the data.

--- Delineated Wetland Continues

— NYSDEC-Mapped Stream

■ NYSDEC-Mapped Wetland

□ Study Area

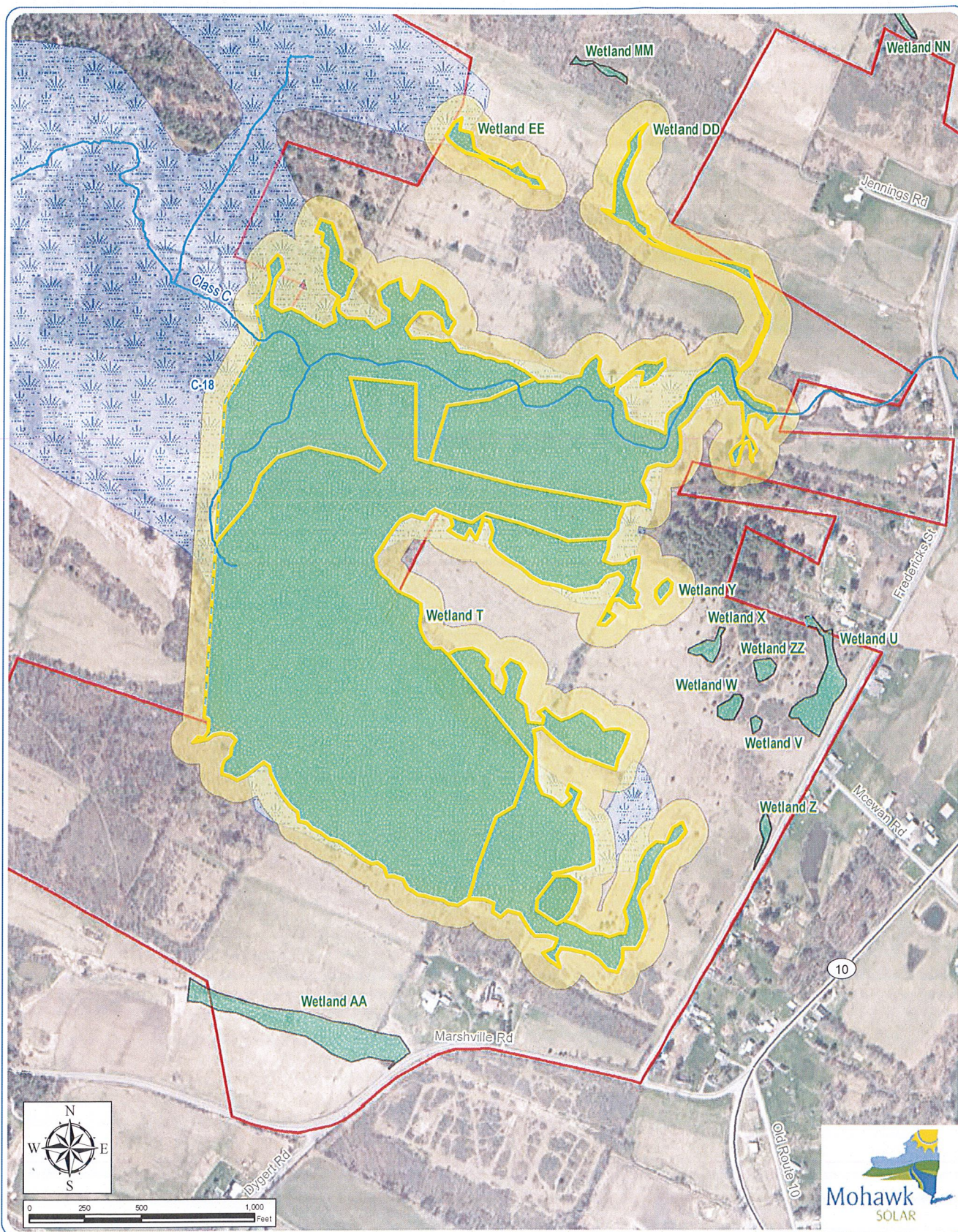
□ Assumed NYSDEC-Jurisdictional Wetland

□ Assumed NYSDEC Jurisdictional 100' Adjacent Area

■ Delineated Wetland

■ Delineated Stream





Mohawk Solar

Towns of Canajoharie and Minden, Montgomery County, New York

Assumed NYSDEC-Jurisdictional Wetlands and Streams Sheet 3 of 5

Notes: 1. Basemap: NYSDOP "2017" orthoimagery. 2. This map was generated in ArcMap by Environmental Design and Research on February 7, 2019. 3. This is a color graphic. Reproduction in grayscale may misrepresent the data.

--- Delineated Wetland Continues

— NYSDEC-Mapped Stream

■ NYSDEC-Mapped Wetland

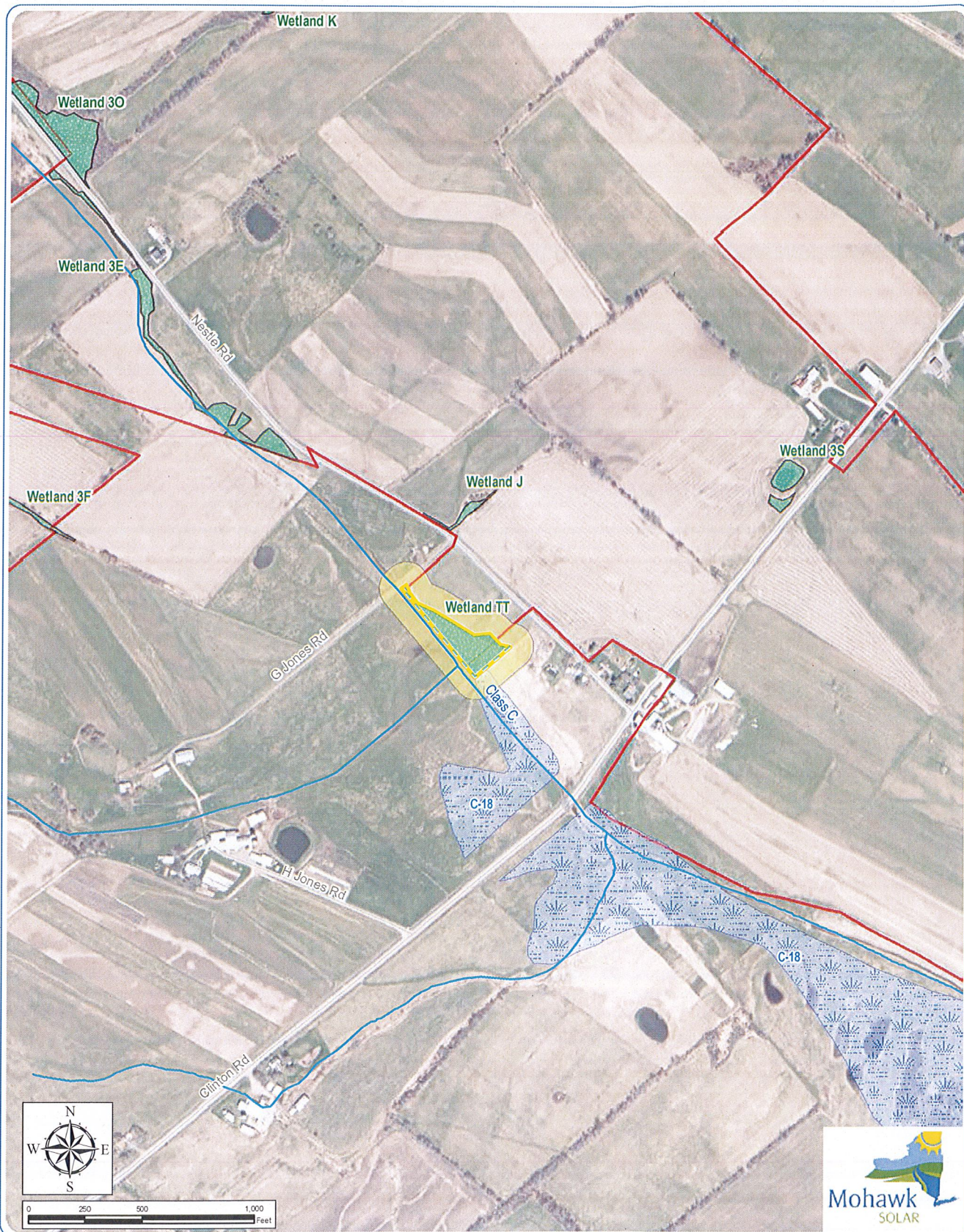
□ Study Area

□ Assumed NYSDEC-Jurisdictional Wetland

□ Assumed NYSDEC Jurisdictional 100' Adjacent Area

■ Delineated Wetland

■ Delineated Stream



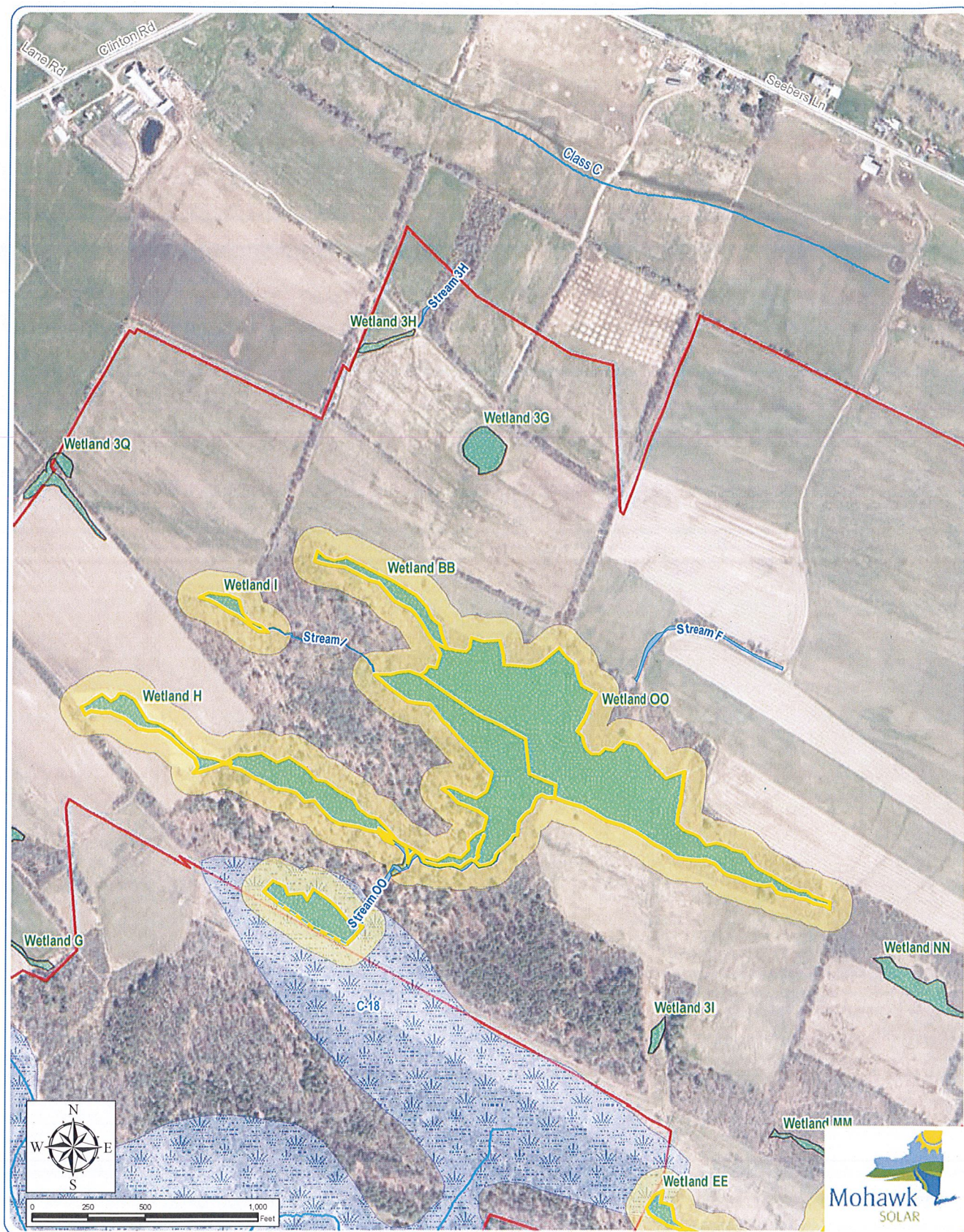
Mohawk Solar

Towns of Canajoharie and Minden, Montgomery County, New York

Assumed NYSDEC-Jurisdictional Wetlands and Streams Sheet 1 of 5

Notes: 1. Basemap: NYS DOP "2017" orthoimagery. 2. This map was generated in ArcMap by Environmental Design and Research on February 7, 2019. 3. This is a color graphic. Reproduction in grayscale may misrepresent the data.

- Delineated Wetland Continues
- NYSDEC-Mapped Stream
- NYSDEC-Mapped Wetland
- Study Area
- Assumed NYSDEC-Jurisdictional Wetland
- Assumed NYSDEC Jurisdictional 100' Adjacent Area
- Delineated Wetland
- Delineated Stream



Mohawk Solar

Towns of Canajoharie and Minden, Montgomery County, New York

Assumed NYSDEC-Jurisdictional Wetlands and Streams Sheet 2 of 5

Notes: 1. Basemap: NYSDOP "2017" orthoimagery. 2. This map was generated in ArcMap by Environmental Design and Research on February 7, 2019. 3. This is a color graphic. Reproduction in grayscale may misrepresent the data.

- Delineated Wetland Continues
- NYSDEC-Mapped Stream
- NYSDEC-Mapped Wetland
- Study Area
- Assumed NYSDEC-Jurisdictional Wetland
- Assumed NYSDEC Jurisdictional 100' Adjacent Area
- Delineated Wetland
- Delineated Stream

