



## Mohawk Solar

Towns of Canajoharie and Minden, Montgomery County, New York

### Wetland Delineation Report

Figure 6: Delineated Wetlands and Streams - Sheet 21 of 48

Notes: 1. Basemap: NYSDOP "2017" orthoimagery map service. 2. This map was generated in ArcMap by Environmental Design and Research on May 20, 2019. 3. This is a color graphic. Reproduction in grayscale may misrepresent the data.

- ⊕ Data Sample Point
- Delineated Wetland and Stream Flag
- Wetland Continues Outside Study Area
- [Red Outline] Study Area
- [Blue Outline] Delineated Stream
- [Green Dotted Outline] Delineated Wetland





## Mohawk Solar

Towns of Canajoharie and Minden, Montgomery County, New York

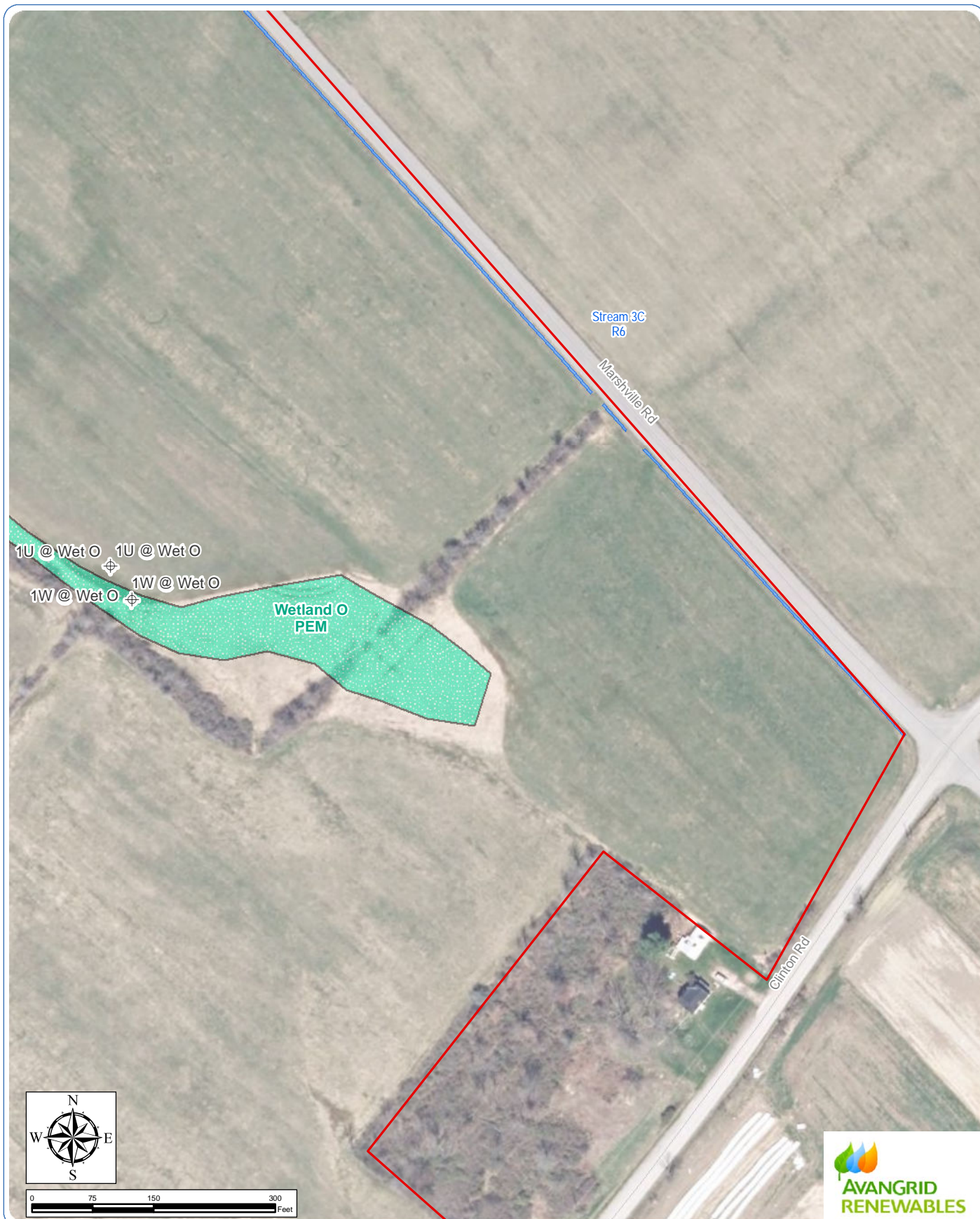
### Wetland Delineation Report

Figure 6: Delineated Wetlands and Streams - Sheet 22 of 48

Notes: 1. Basemap: NYSDOP "2017" orthoimagery map service. 2. This map was generated in ArcMap by Environmental Design and Research on May 20, 2019. 3. This is a color graphic. Reproduction in grayscale may misrepresent the data.

- ⊕ Data Sample Point
- Delineated Wetland and Stream Flag
- Wetland Continues Outside Study Area
- Study Area
- Delineated Stream
- Delineated Wetland





## Mohawk Solar

Towns of Canajoharie and Minden, Montgomery County, New York

### Wetland Delineation Report

Figure 6: Delineated Wetlands and Streams - Sheet 23 of 48

Notes: 1. Basemap: NYSDOP "2017" orthoimagery map service. 2. This map was generated in ArcMap by Environmental Design and Research on May 20, 2019. 3. This is a color graphic. Reproduction in grayscale may misrepresent the data.

- ⊕ Data Sample Point
- Delineated Wetland and Stream Flag
- Wetland Continues Outside Study Area
- [Red Outline] Study Area
- [Blue Line] Delineated Stream
- [Green Stippled] Delineated Wetland







## Mohawk Solar

Towns of Canajoharie and Minden, Montgomery County, New York

### Wetland Delineation Report

Figure 6: Delineated Wetlands and Streams - Sheet 24 of 48

Notes: 1. Basemap: NYSDOP "2017" orthoimagery map service. 2. This map was generated in ArcMap by Environmental Design and Research on May 20, 2019. 3. This is a color graphic. Reproduction in grayscale may misrepresent the data.

- ⊕ Data Sample Point
- Delineated Wetland and Stream Flag
- Wetland Continues Outside Study Area
- [Red Outline] Study Area
- [Blue Outline] Delineated Stream
- [Green Dotted Outline] Delineated Wetland







## Mohawk Solar

Towns of Canajoharie and Minden, Montgomery County, New York

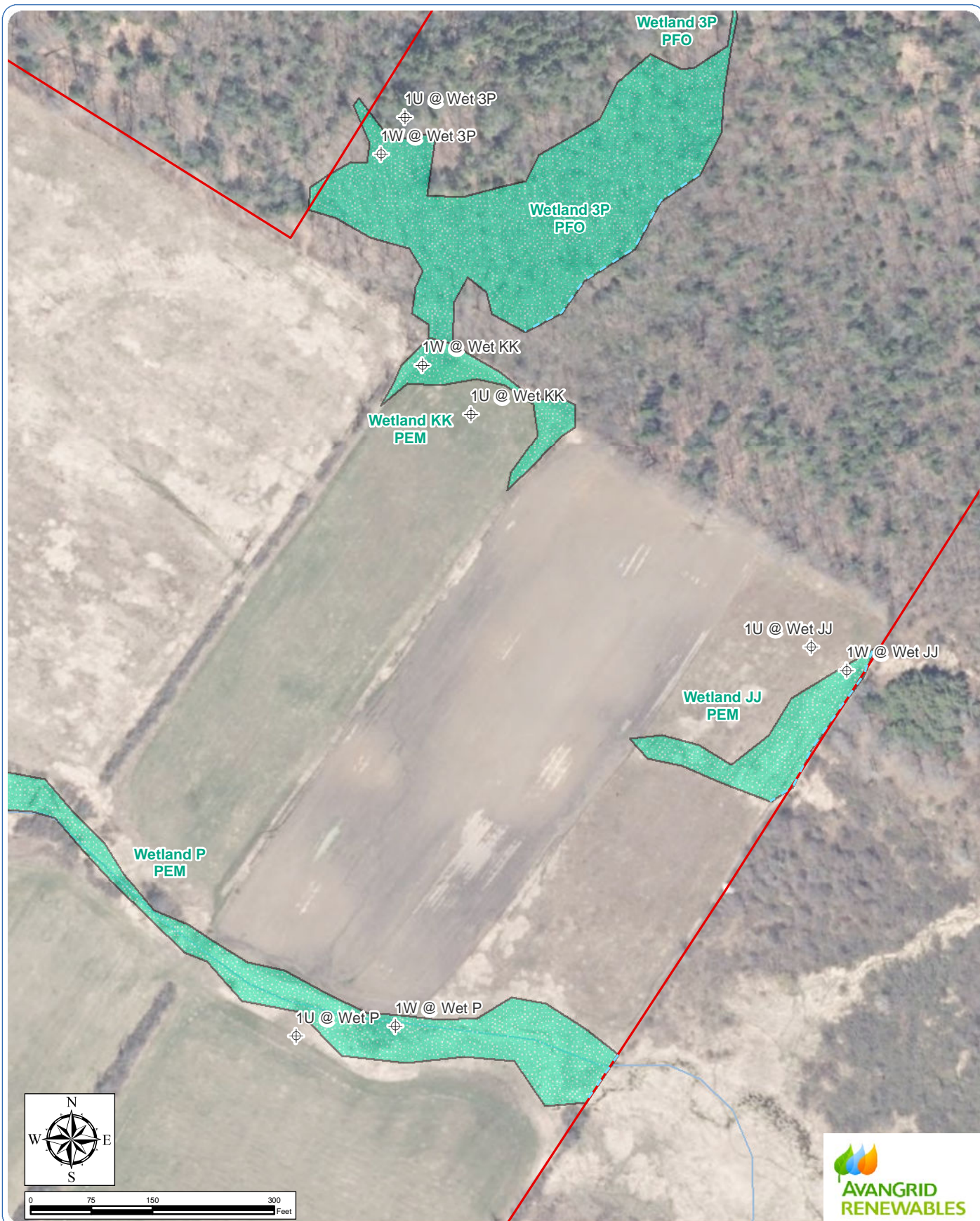
### Wetland Delineation Report

Figure 6: Delineated Wetlands and Streams - Sheet 25 of 48

Notes: 1. Basemap: NYSDOP "2017" orthoimagery map service. 2. This map was generated in ArcMap by Environmental Design and Research on May 20, 2019. 3. This is a color graphic. Reproduction in grayscale may misrepresent the data.

- ⊕ Data Sample Point
- Delineated Wetland and Stream Flag
- Wetland Continues Outside Study Area
- ▭ Study Area
- ▭ Delineated Stream
- ▨ Delineated Wetland





## Mohawk Solar

Towns of Canajoharie and Minden, Montgomery County, New York

### Wetland Delineation Report

Figure 6: Delineated Wetlands and Streams - Sheet 26 of 48

Notes: 1. Basemap: NYSDOP "2017" orthoimagery map service. 2. This map was generated in ArcMap by Environmental Design and Research on May 20, 2019. 3. This is a color graphic. Reproduction in grayscale may misrepresent the data.

- ⊕ Data Sample Point
- Delineated Wetland and Stream Flag
- Wetland Continues Outside Study Area
- [Red Outline] Study Area
- [Blue Line] Delineated Stream
- [Green Dotted Area] Delineated Wetland





## Mohawk Solar

Towns of Canajoharie and Minden, Montgomery County, New York

### Wetland Delineation Report

Figure 6: Delineated Wetlands and Streams - Sheet 27 of 48

Notes: 1. Basemap: NYSDOP "2017" orthoimagery map service. 2. This map was generated in ArcMap by Environmental Design and Research on May 20, 2019. 3. This is a color graphic. Reproduction in grayscale may misrepresent the data.

- ⊕ Data Sample Point
- Delineated Wetland and Stream Flag
- Wetland Continues Outside Study Area
- ▭ Study Area
- ▬ Delineated Stream
- ▨ Delineated Wetland







## Mohawk Solar

Towns of Canajoharie and Minden, Montgomery County, New York

### Wetland Delineation Report

Figure 6: Delineated Wetlands and Streams - Sheet 28 of 48

Notes: 1. Basemap: NYSDOP "2017" orthoimagery map service. 2. This map was generated in ArcMap by Environmental Design and Research on May 20, 2019. 3. This is a color graphic. Reproduction in grayscale may misrepresent the data.

- ⊕ Data Sample Point
- Delineated Wetland and Stream Flag
- Wetland Continues Outside Study Area
- ▭ Study Area
- ▭ Delineated Stream
- ▭ Delineated Wetland







## Mohawk Solar

Towns of Canajoharie and Minden, Montgomery County, New York

### Wetland Delineation Report

Figure 6: Delineated Wetlands and Streams - Sheet 29 of 48

Notes: 1. Basemap: NYSDOP "2017" orthoimagery map service. 2. This map was generated in ArcMap by Environmental Design and Research on May 20, 2019. 3. This is a color graphic. Reproduction in grayscale may misrepresent the data.

- ⊕ Data Sample Point
- Delineated Wetland and Stream Flag
- Wetland Continues Outside Study Area
- [Red Outline] Study Area
- [Blue Line] Delineated Stream
- [Green Stippled Area] Delineated Wetland







## Mohawk Solar

Towns of Canajoharie and Minden, Montgomery County, New York

### Wetland Delineation Report

Figure 6: Delineated Wetlands and Streams - Sheet 30 of 48

Notes: 1. Basemap: NYSDOP "2017" orthoimagery map service. 2. This map was generated in ArcMap by Environmental Design and Research on May 20, 2019. 3. This is a color graphic. Reproduction in grayscale may misrepresent the data.

- ⊕ Data Sample Point
- Delineated Wetland and Stream Flag
- Wetland Continues Outside Study Area
- ▭ Study Area
- ▭ Delineated Stream
- ▭ Delineated Wetland





## Mohawk Solar

Towns of Canajoharie and Minden, Montgomery County, New York

### Wetland Delineation Report

Figure 6: Delineated Wetlands and Streams - Sheet 31 of 48

Notes: 1. Basemap: NYSDOP "2017" orthoimagery map service. 2. This map was generated in ArcMap by Environmental Design and Research on May 20, 2019. 3. This is a color graphic. Reproduction in grayscale may misrepresent the data.

- ⊕ Data Sample Point
- Delineated Wetland and Stream Flag
- Wetland Continues Outside Study Area
- Study Area
- Delineated Stream
- Delineated Wetland





## Mohawk Solar

Towns of Canajoharie and Minden, Montgomery County, New York

### Wetland Delineation Report

Figure 6: Delineated Wetlands and Streams - Sheet 32 of 48

Notes: 1. Basemap: NYSDOP "2017" orthoimagery map service. 2. This map was generated in ArcMap by Environmental Design and Research on May 20, 2019. 3. This is a color graphic. Reproduction in grayscale may misrepresent the data.

- ⊕ Data Sample Point
- Delineated Wetland and Stream Flag
- Wetland Continues Outside Study Area
- ▭ Study Area
- ▬ Delineated Stream
- ▨ Delineated Wetland





## Mohawk Solar

Towns of Canajoharie and Minden, Montgomery County, New York

### Wetland Delineation Report

Figure 6: Delineated Wetlands and Streams - Sheet 33 of 48

Notes: 1. Basemap: NYSDOP "2017" orthoimagery map service. 2. This map was generated in ArcMap by Environmental Design and Research on May 20, 2019. 3. This is a color graphic. Reproduction in grayscale may misrepresent the data.

- ⊕ Data Sample Point
- Delineated Wetland and Stream Flag
- Wetland Continues Outside Study Area
- ▭ Study Area
- ▬ Delineated Stream
- ▨ Delineated Wetland





## Mohawk Solar

Towns of Canajoharie and Minden, Montgomery County, New York

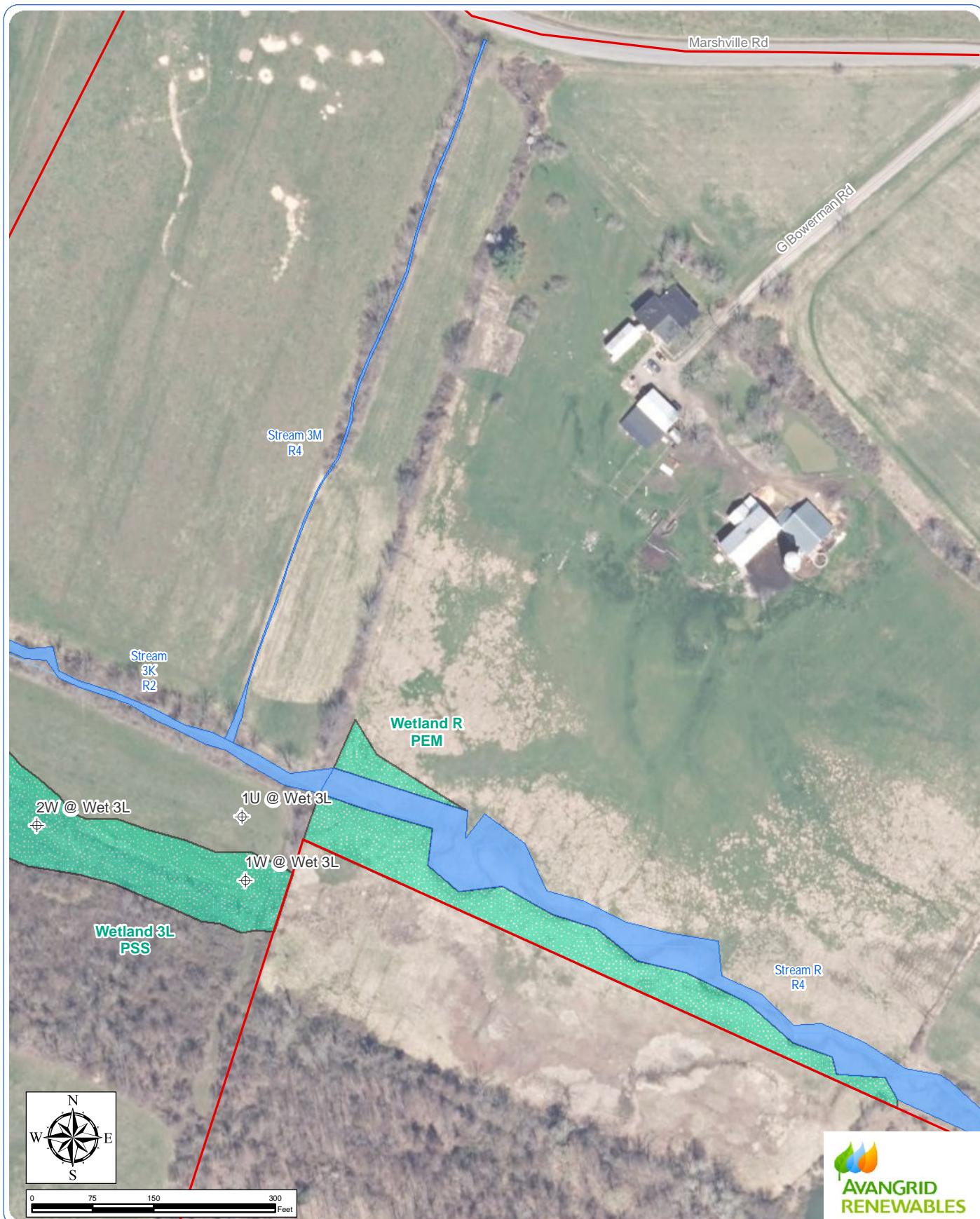
### Wetland Delineation Report

Figure 6: Delineated Wetlands and Streams - Sheet 34 of 48

Notes: 1. Basemap: NYSDOP "2017" orthoimagery map service. 2. This map was generated in ArcMap by Environmental Design and Research on May 20, 2019. 3. This is a color graphic. Reproduction in grayscale may misrepresent the data.

- ⊕ Data Sample Point
- Delineated Wetland and Stream Flag
- Wetland Continues Outside Study Area
- ▭ Study Area
- ▬ Delineated Stream
- ▨ Delineated Wetland





## Mohawk Solar

Towns of Canajoharie and Minden, Montgomery County, New York

### Wetland Delineation Report

Figure 6: Delineated Wetlands and Streams - Sheet 35 of 48

Notes: 1. Basemap: NYSDOP "2017" orthoimagery map service. 2. This map was generated in ArcMap by Environmental Design and Research on May 20, 2019. 3. This is a color graphic. Reproduction in grayscale may misrepresent the data.

- ⊕ Data Sample Point
- Delineated Wetland and Stream Flag
- Wetland Continues Outside Study Area
- [Red Outline] Study Area
- [Blue Line] Delineated Stream
- [Green Dotted Area] Delineated Wetland





## Mohawk Solar

Towns of Canajoharie and Minden, Montgomery County, New York

### Wetland Delineation Report

Figure 6: Delineated Wetlands and Streams - Sheet 36 of 48

Notes: 1. Basemap: NYSDOP "2017" orthoimagery map service. 2. This map was generated in ArcMap by Environmental Design and Research on May 20, 2019. 3. This is a color graphic. Reproduction in grayscale may misrepresent the data.

- ⊕ Data Sample Point
- Delineated Wetland and Stream Flag
- Wetland Continues Outside Study Area
- ▭ Study Area
- ▭ Delineated Stream
- ▭ Delineated Wetland







## Mohawk Solar

Towns of Canajoharie and Minden, Montgomery County, New York

### Wetland Delineation Report

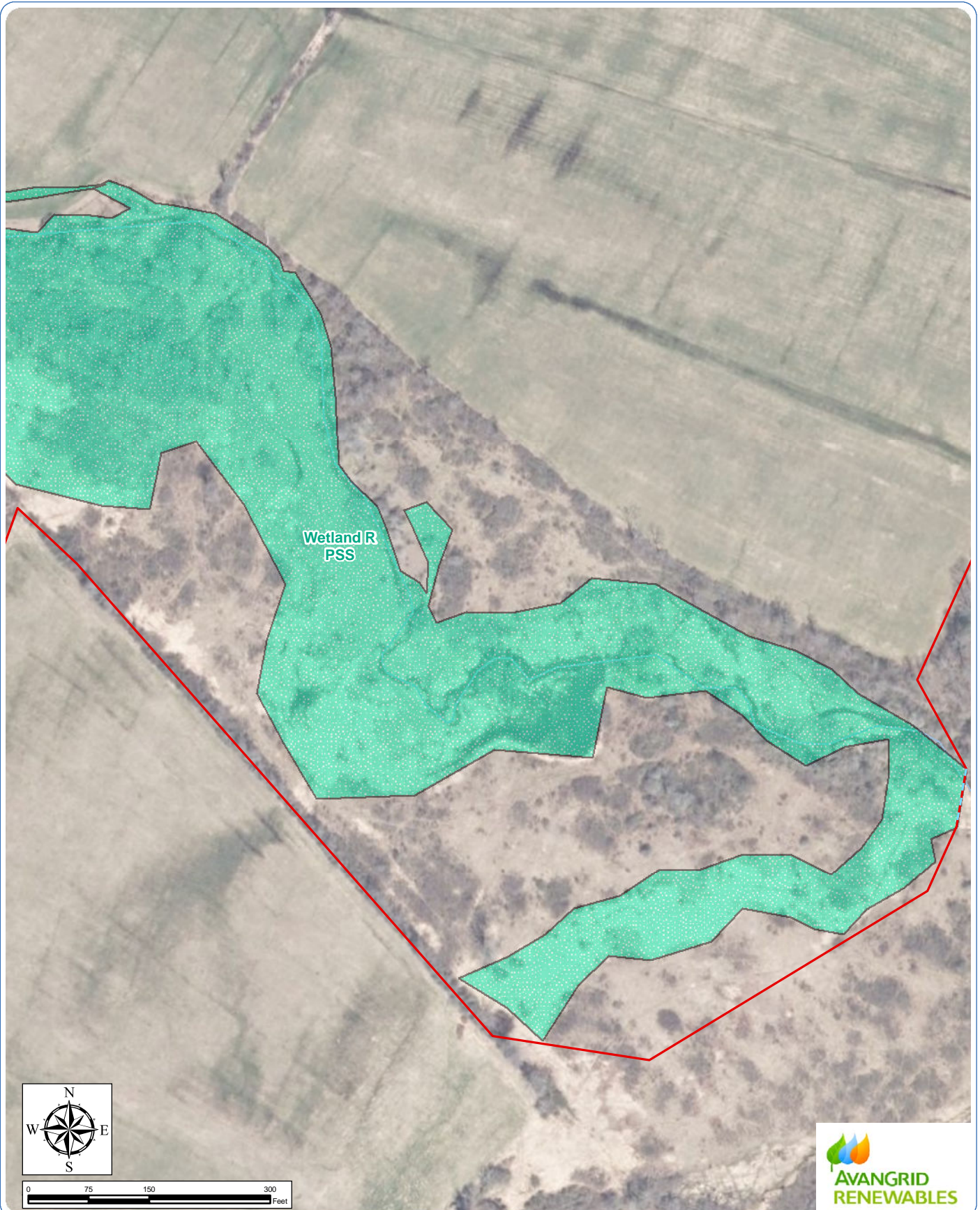
Figure 6: Delineated Wetlands and Streams - Sheet 37 of 48

Notes: 1. Basemap: NYSDOP "2017" orthoimagery map service. 2. This map was generated in ArcMap by Environmental Design and Research on May 20, 2019. 3. This is a color graphic. Reproduction in grayscale may misrepresent the data.

- ⊕ Data Sample Point
- Delineated Wetland and Stream Flag
- Wetland Continues Outside Study Area
- ▭ Study Area
- ▭ Delineated Stream
- ▭ Delineated Wetland







## Mohawk Solar

Towns of Canajoharie and Minden, Montgomery County, New York

### Wetland Delineation Report

Figure 6: Delineated Wetlands and Streams - Sheet 38 of 48

Notes: 1. Basemap: NYSDOP "2017" orthoimagery map service. 2. This map was generated in ArcMap by Environmental Design and Research on May 20, 2019. 3. This is a color graphic. Reproduction in grayscale may misrepresent the data.

- ⊕ Data Sample Point
- Delineated Wetland and Stream Flag
- Wetland Continues Outside Study Area
- ▭ Study Area
- ▭ Delineated Stream
- ▨ Delineated Wetland







## Mohawk Solar

Towns of Canajoharie and Minden, Montgomery County, New York

### Wetland Delineation Report

Figure 6: Delineated Wetlands and Streams - Sheet 39 of 48

Notes: 1. Basemap: NYSDOP "2017" orthoimagery map service. 2. This map was generated in ArcMap by Environmental Design and Research on May 20, 2019. 3. This is a color graphic. Reproduction in grayscale may misrepresent the data.

- ⊕ Data Sample Point
- Delineated Wetland and Stream Flag
- Wetland Continues Outside Study Area
- [Red Outline] Study Area
- [Blue Line] Delineated Stream
- [Green Dotted Area] Delineated Wetland







## Mohawk Solar

Towns of Canajoharie and Minden, Montgomery County, New York

### Wetland Delineation Report

Figure 6: Delineated Wetlands and Streams - Sheet 40 of 48

Notes: 1. Basemap: NYSDOP "2017" orthoimagery map service. 2. This map was generated in ArcMap by Environmental Design and Research on May 20, 2019. 3. This is a color graphic. Reproduction in grayscale may misrepresent the data.

- ⊕ Data Sample Point
- Delineated Wetland and Stream Flag
- Wetland Continues Outside Study Area
- Study Area
- Delineated Stream
- Delineated Wetland







## Mohawk Solar

Towns of Canajoharie and Minden, Montgomery County, New York

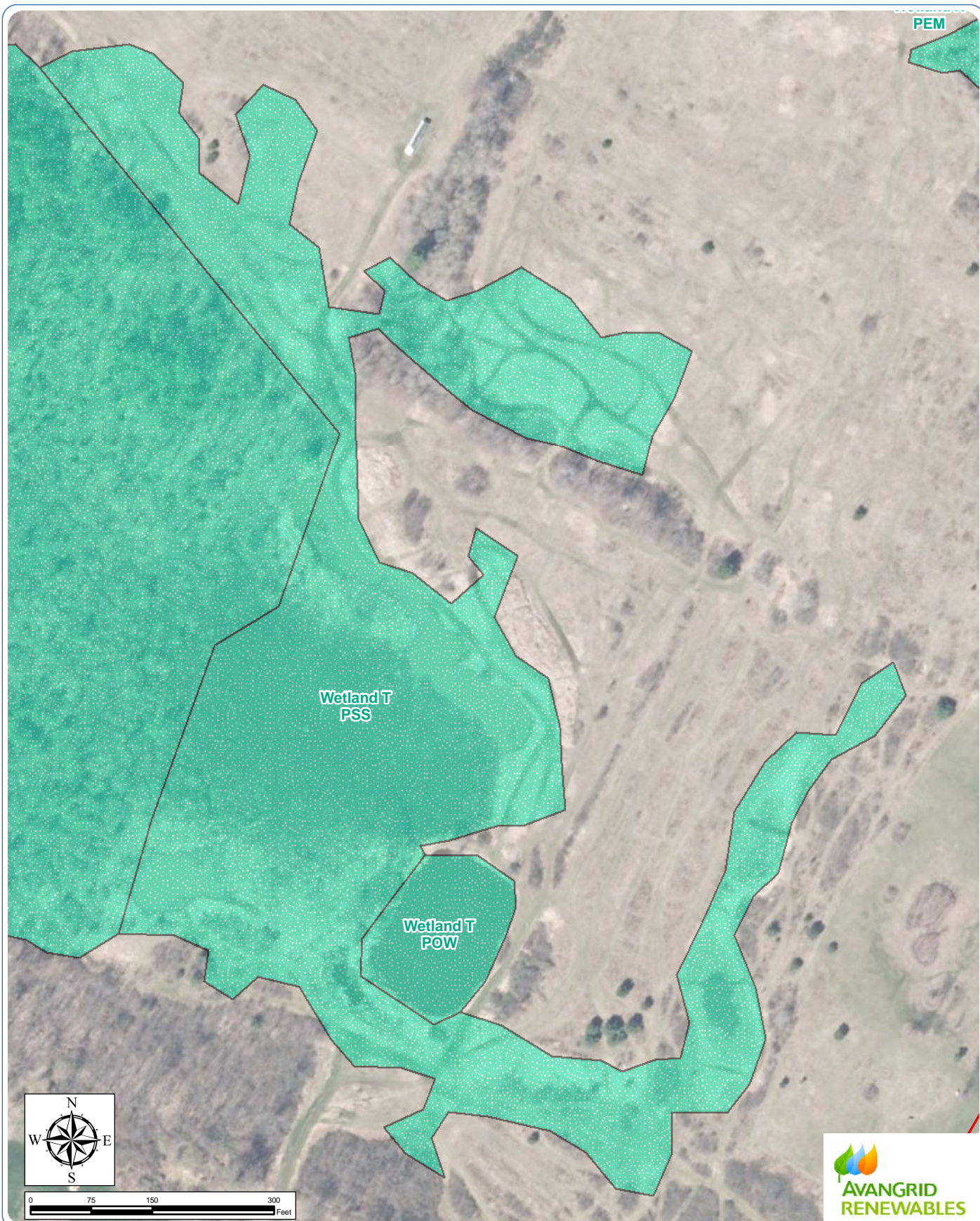
### Wetland Delineation Report

Figure 6: Delineated Wetlands and Streams - Sheet 41 of 48

Notes: 1. Basemap: NYSDOP "2017" orthoimagery map service. 2. This map was generated in ArcMap by Environmental Design and Research on May 20, 2019. 3. This is a color graphic. Reproduction in grayscale may misrepresent the data.

- ⊕ Data Sample Point
- Delineated Wetland and Stream Flag
- Wetland Continues Outside Study Area
- [Red Outline] Study Area
- [Blue Outline] Delineated Stream
- [Green Dotted] Delineated Wetland





## Mohawk Solar

Towns of Canajoharie and Minden, Montgomery County, New York

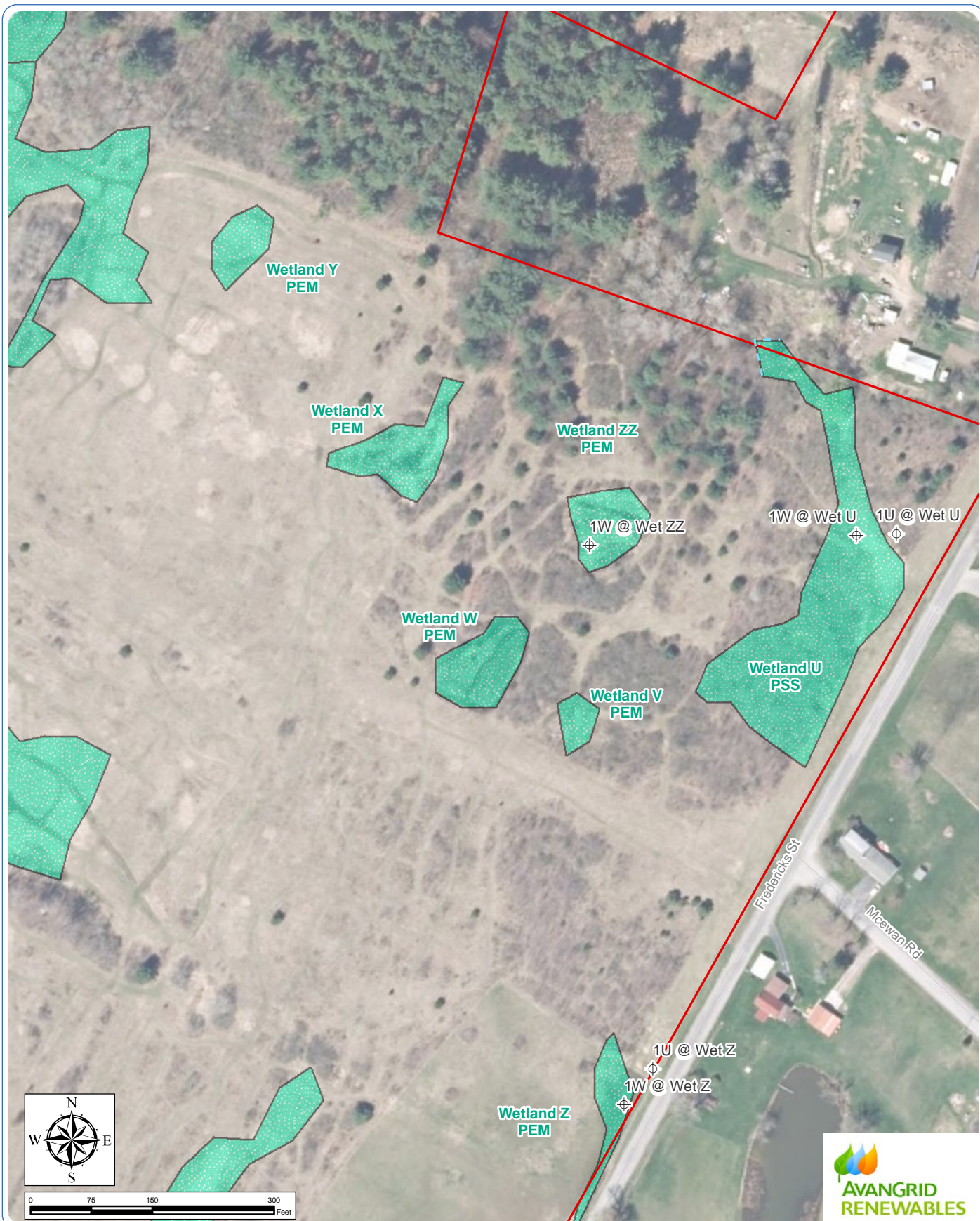
### Wetland Delineation Report

Figure 6: Delineated Wetlands and Streams - Sheet 42 of 48

Notes: 1. Basemap: NYSDOP "2017" orthoimagery map service. 2. This map was generated in ArcMap by Environmental Design and Research on May 20, 2019. 3. This is a color graphic. Reproduction in grayscale may misrepresent the data.

- ⊕ Data Sample Point
- Delineated Wetland and Stream Flag
- Wetland Continues Outside Study Area
- Study Area
- Delineated Stream
- Delineated Wetland





## Mohawk Solar

Towns of Canajoharie and Minden, Montgomery County, New York

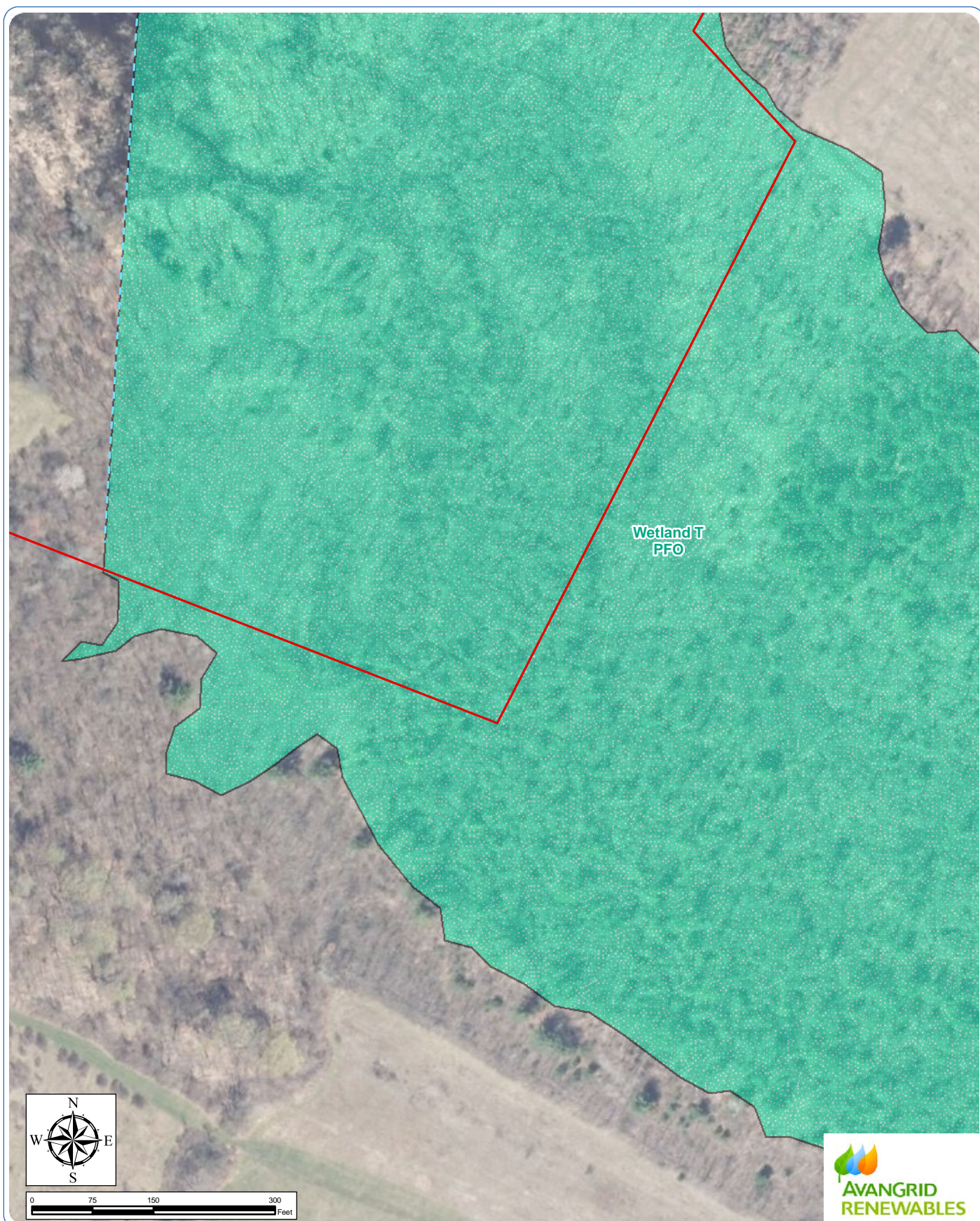
### Wetland Delineation Report

Figure 6: Delineated Wetlands and Streams - Sheet 43 of 48

Notes: 1. Basemap: NYSDOP "2017" orthoimagery map service. 2. This map was generated in ArcMap by Environmental Design and Research on May 20, 2019. 3. This is a color graphic. Reproduction in grayscale may misrepresent the data.

- ⊕ Data Sample Point
- Delineated Wetland and Stream Flag
- Wetland Continues Outside Study Area
- [Red Outline] Study Area
- [Blue Line] Delineated Stream
- [Green Dotted Area] Delineated Wetland





## Mohawk Solar

Towns of Canajoharie and Minden, Montgomery County, New York

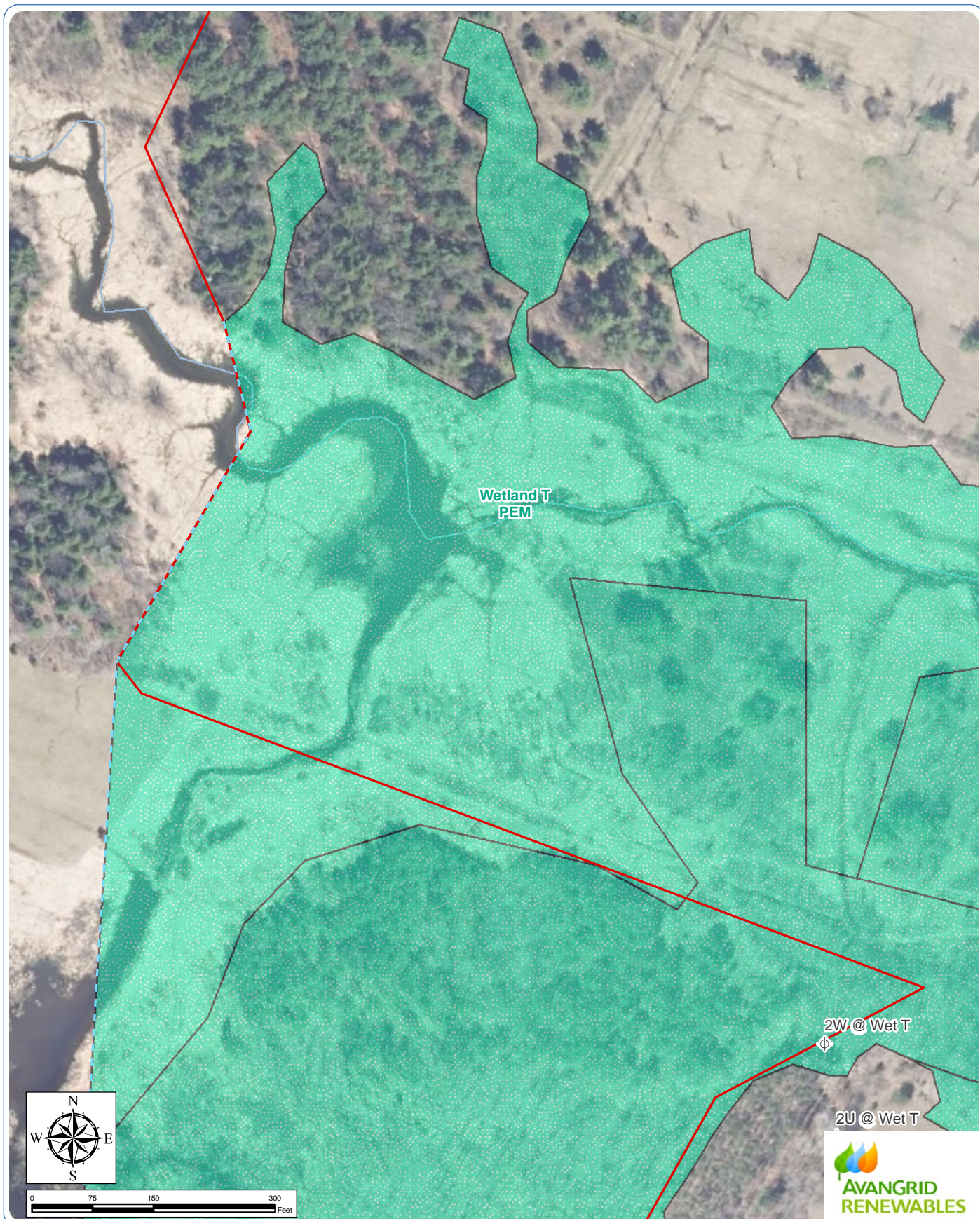
### Wetland Delineation Report

Figure 6: Delineated Wetlands and Streams - Sheet 44 of 48

Notes: 1. Basemap: NYSDOP "2017" orthoimagery map service. 2. This map was generated in ArcMap by Environmental Design and Research on May 20, 2019. 3. This is a color graphic. Reproduction in grayscale may misrepresent the data.

- ⊕ Data Sample Point
- Delineated Wetland and Stream Flag
- Wetland Continues Outside Study Area
- Study Area
- Delineated Stream
- Delineated Wetland





## Mohawk Solar

Towns of Canajoharie and Minden, Montgomery County, New York

### Wetland Delineation Report

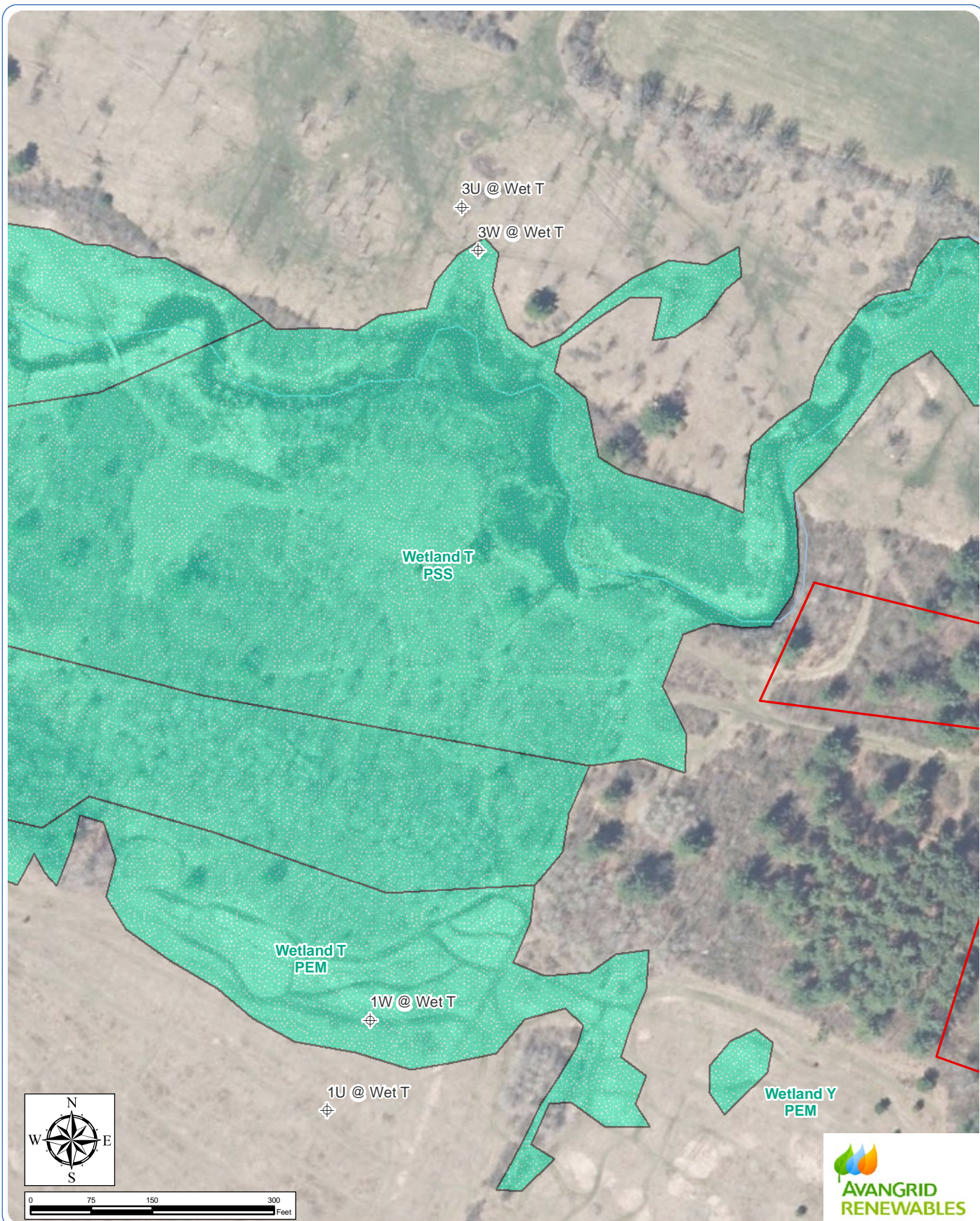
Figure 6: Delineated Wetlands and Streams - Sheet 45 of 48

Notes: 1. Basemap: NYSDOP "2017" orthoimagery map service. 2. This map was generated in ArcMap by Environmental Design and Research on May 20, 2019. 3. This is a color graphic. Reproduction in grayscale may misrepresent the data.

- ⊕ Data Sample Point
- Delineated Wetland and Stream Flag
- Wetland Continues Outside Study Area
- ▭ Study Area
- ▭ Delineated Stream
- ▭ Delineated Wetland







## Mohawk Solar

Towns of Canajoharie and Minden, Montgomery County, New York

### Wetland Delineation Report

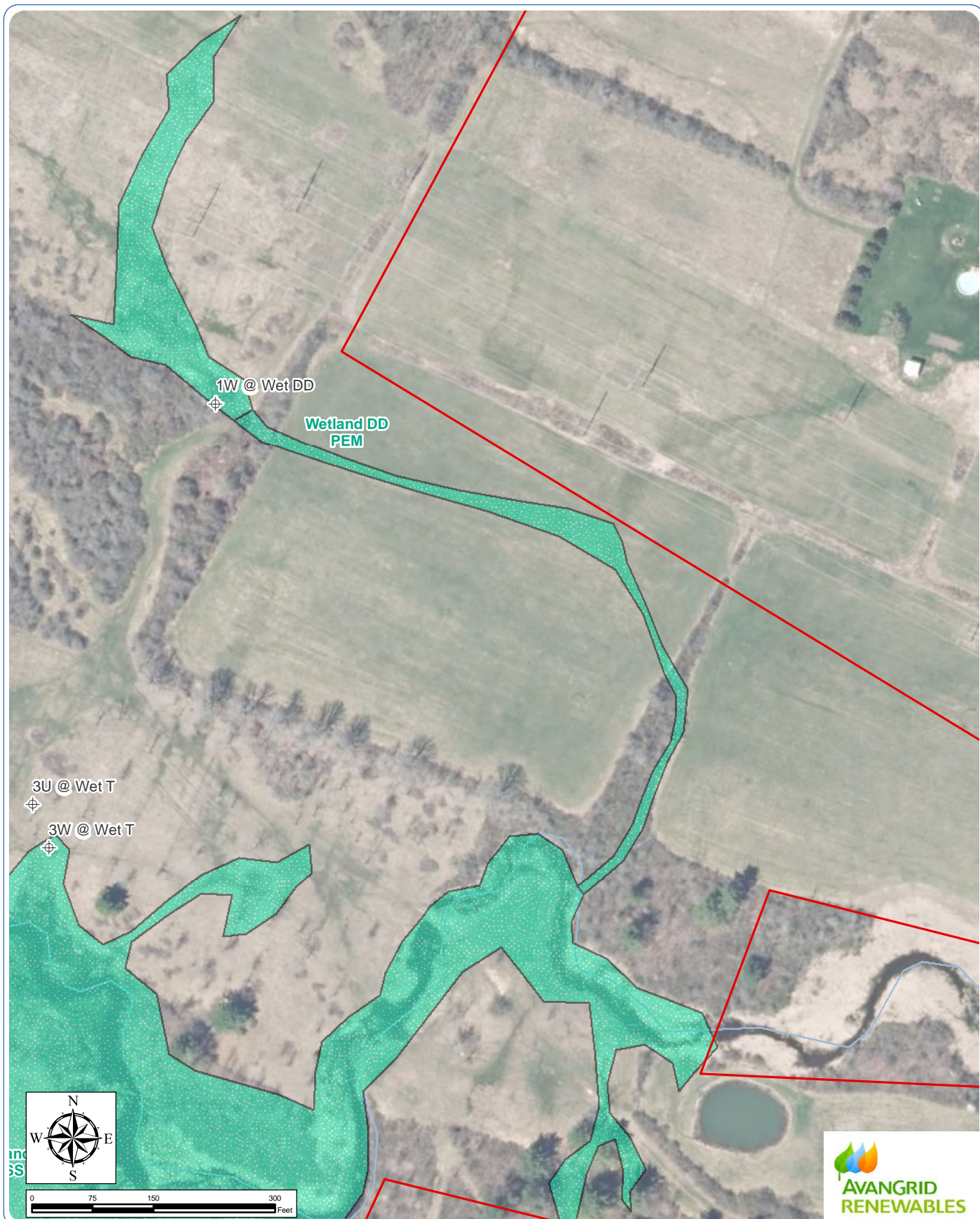
Figure 6: Delineated Wetlands and Streams - Sheet 46 of 48

Notes: 1. Basemap: NYSDOP "2017" orthoimagery map service. 2. This map was generated in ArcMap by Environmental Design and Research on May 20, 2019. 3. This is a color graphic. Reproduction in grayscale may misrepresent the data.

- ⊕ Data Sample Point
- Delineated Wetland and Stream Flag
- Wetland Continues Outside Study Area
- ▭ Study Area
- ▭ Delineated Stream
- ▭ Delineated Wetland







## Mohawk Solar

Towns of Canajoharie and Minden, Montgomery County, New York

### Wetland Delineation Report

Figure 6: Delineated Wetlands and Streams - Sheet 47 of 48

Notes: 1. Basemap: NYSDOP "2017" orthoimagery map service. 2. This map was generated in ArcMap by Environmental Design and Research on May 20, 2019. 3. This is a color graphic. Reproduction in grayscale may misrepresent the data.

- ⊕ Data Sample Point
- Delineated Wetland and Stream Flag
- Wetland Continues Outside Study Area
- [Red Outline] Study Area
- [Blue Line] Delineated Stream
- [Green Stippled] Delineated Wetland







## Mohawk Solar

Towns of Canajoharie and Minden, Montgomery County, New York

### Wetland Delineation Report

Figure 6: Delineated Wetlands and Streams - Sheet 48 of 48

Notes: 1. Basemap: NYSDOP "2017" orthoimagery map service. 2. This map was generated in ArcMap by Environmental Design and Research on May 20, 2019. 3. This is a color graphic. Reproduction in grayscale may misrepresent the data.

- ⊕ Data Sample Point
- Delineated Wetland and Stream Flag
- Wetland Continues Outside Study Area
- [Red Outline] Study Area
- [Blue Outline] Delineated Stream
- [Green Stippled] Delineated Wetland

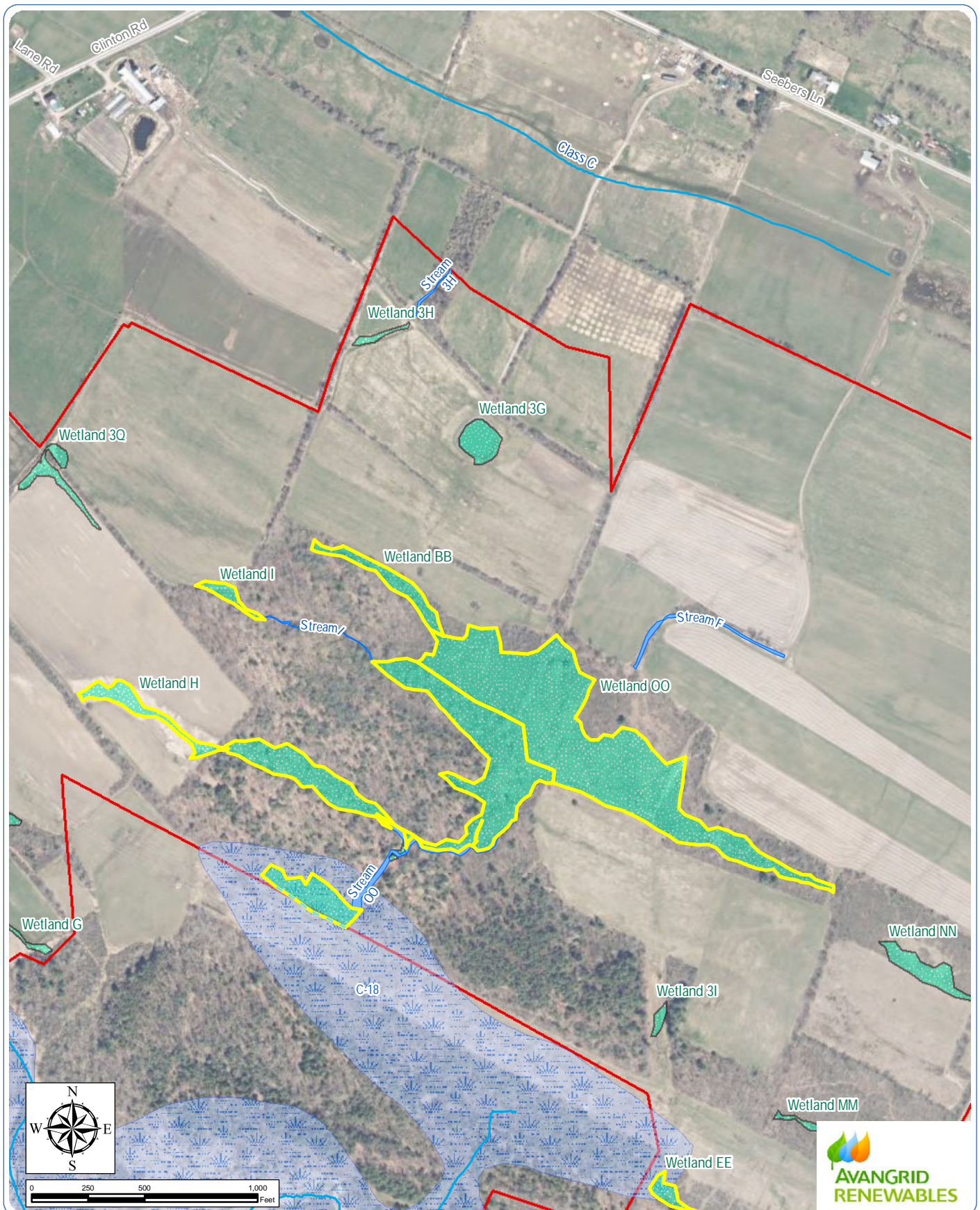












## Mohawk Solar

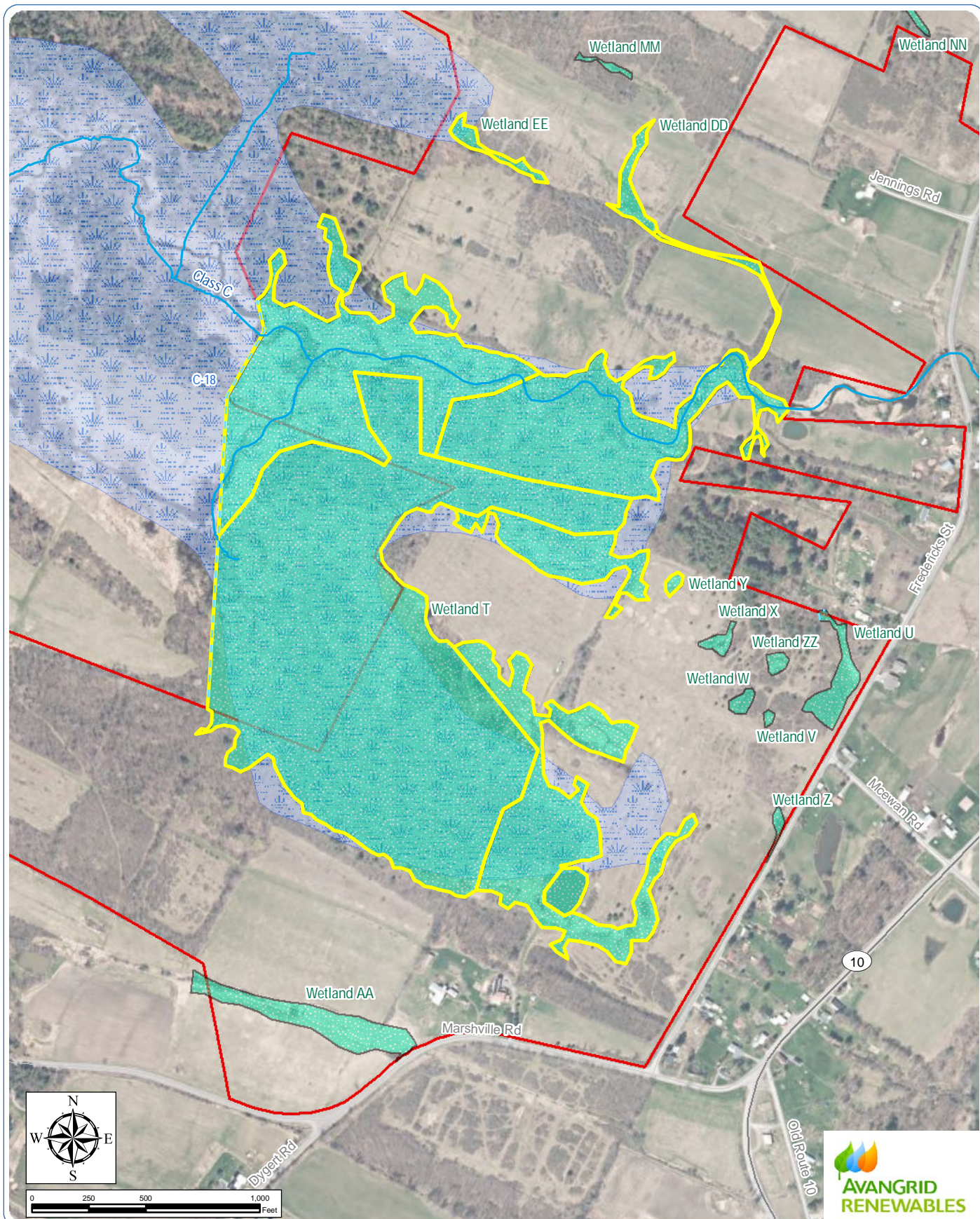
Towns of Canajoharie and Minden, Montgomery County, New York  
[Wetland Delineation Report](#)

Figure 7: NYSDEC-Jurisdictional Delineated Wetlands  
 Sheet 2 of 5

Notes: 1. Basemap: NYS DOP "2017" orthoimagery. 2. This map was generated in ArcMap by Environmental Design and Research on May 20, 2019. 3. This is a color graphic. Reproduction in grayscale may misrepresent the data.

- Delineated Wetland Continues
- NYSDEC-Mapped Stream
- NYSDEC-Mapped Wetland
- Study Area
- NYSDEC Jurisdictional Delineated Wetland
- Delineated Wetland
- Delineated Stream





## Mohawk Solar

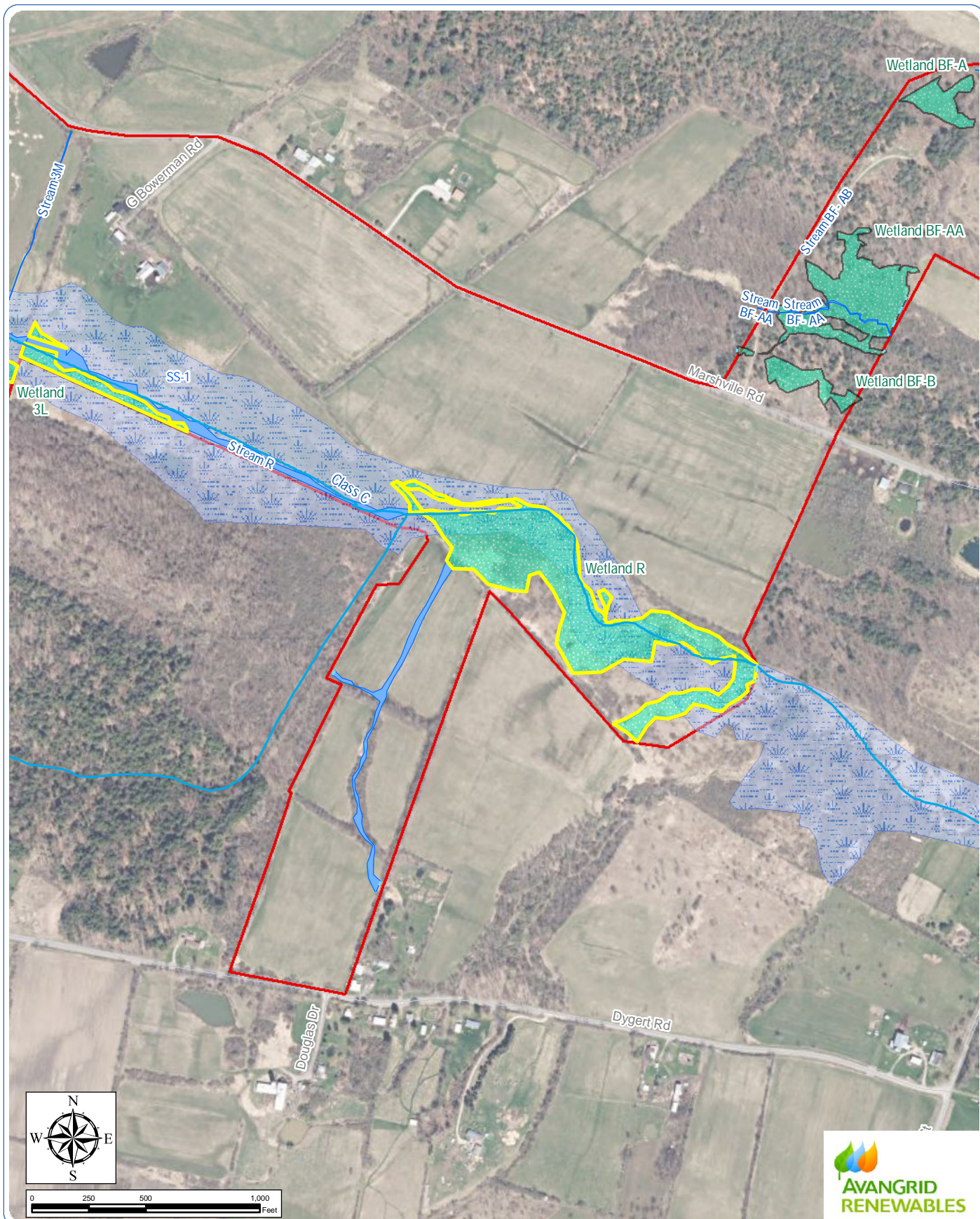
Towns of Canajoharie and Minden, Montgomery County, New York  
[Wetland Delineation Report](#)

Figure 7: NYSDEC-Jurisdictional Delineated Wetlands  
 Sheet 3 of 5

Notes: 1. Basemap: NYSDOP "2017" orthoimagery. 2. This map was generated in ArcMap by Environmental Design and Research on May 20, 2019. 3. This is a color graphic. Reproduction in grayscale may misrepresent the data.

- Delineated Wetland Continues
- NYSDEC-Mapped Stream
- NYSDEC-Mapped Wetland
- Study Area
- NYSDEC Jurisdictional Delineated Wetland
- Delineated Wetland
- Delineated Stream





## Mohawk Solar

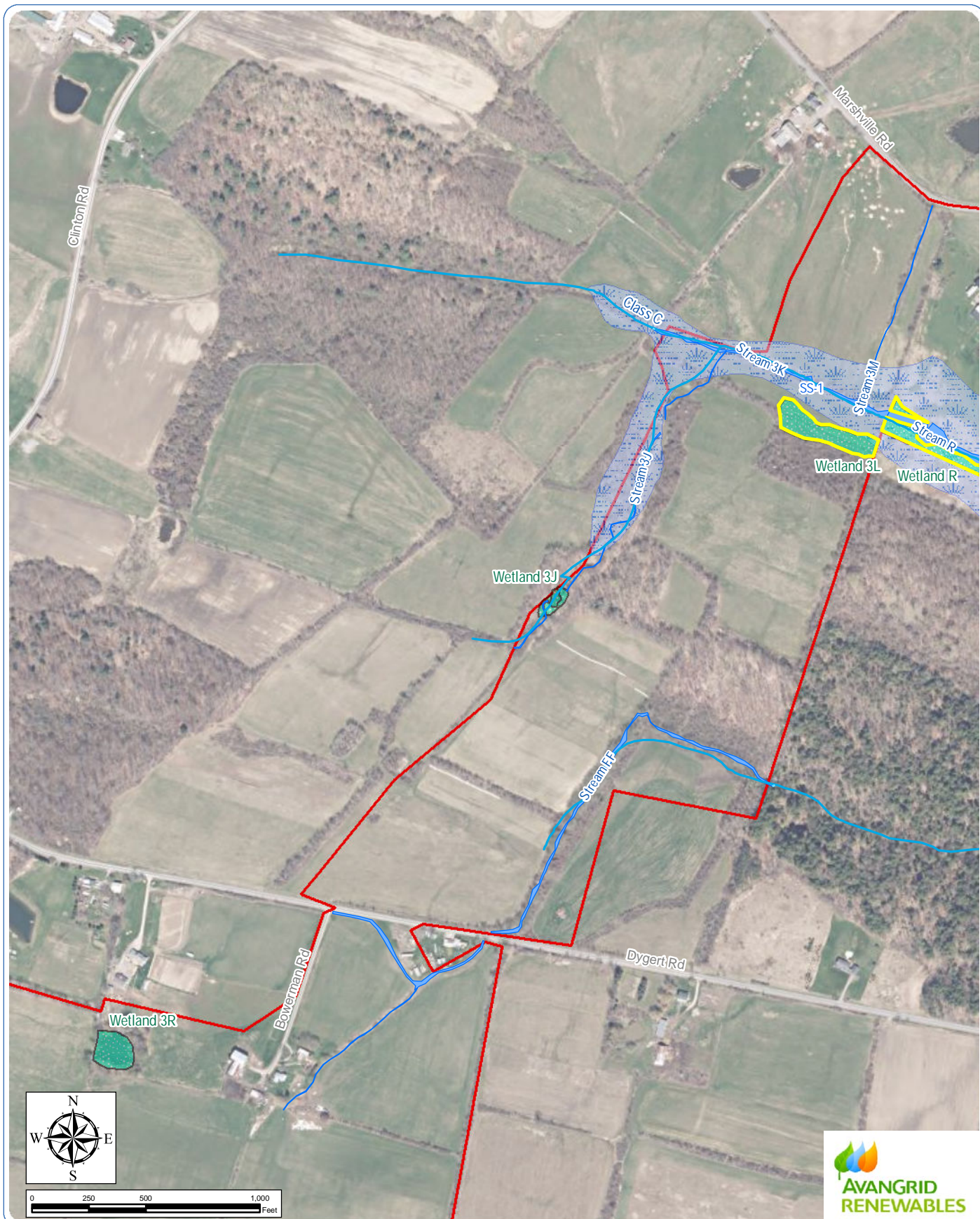
Towns of Canajoharie and Minden, Montgomery County, New York  
[Wetland Delineation Report](#)

Figure 7: NYSDEC-Jurisdictional Delineated Wetlands  
 Sheet 4 of 5

Notes: 1. Basemap: NYSDOP "2017" orthoimagery. 2. This map was generated in ArcMap by Environmental Design and Research on May 20, 2019. 3. This is a color graphic. Reproduction in grayscale may misrepresent the data.

- Delineated Wetland Continues
- NYSDEC-Mapped Stream
- NYSDEC-Mapped Wetland
- Study Area
- NYSDEC Jurisdictional Delineated Wetland
- Delineated Wetland
- Delineated Stream





## Mohawk Solar

Towns of Canajoharie and Minden, Montgomery County, New York  
[Wetland Delineation Report](#)

Figure 7: NYSDEC-Jurisdictional Delineated Wetlands  
 Sheet 5 of 5

Notes: 1. Basemap: NYS DOP "2017" orthoimagery. 2. This map was generated in ArcMap by Environmental Design and Research on May 20, 2019. 3. This is a color graphic. Reproduction in grayscale may misrepresent the data.

- Delineated Wetland Continues
- NYSDEC-Mapped Stream
- NYSDEC-Mapped Wetland
- Study Area
- NYSDEC Jurisdictional Delineated Wetland
- Delineated Wetland
- Delineated Stream