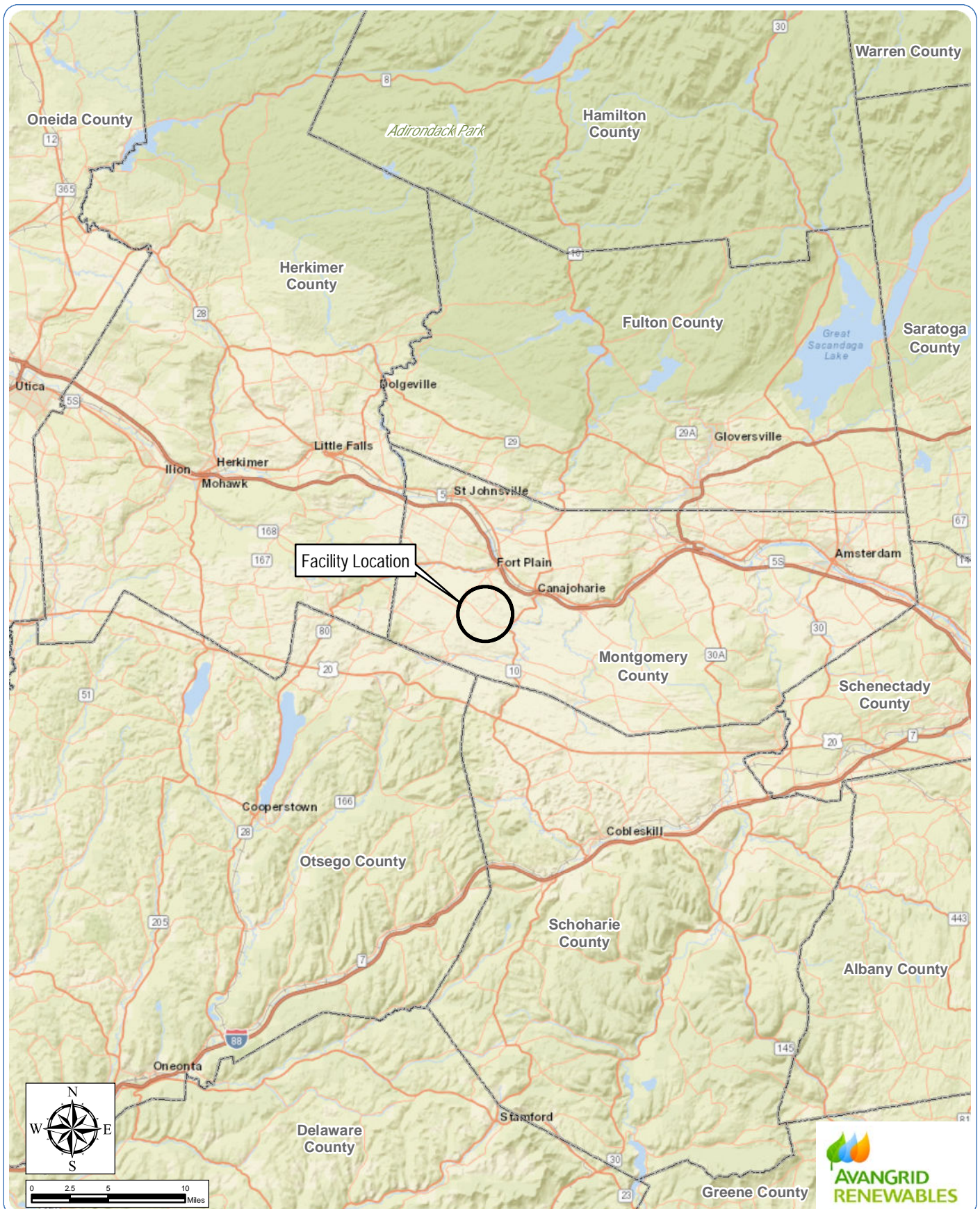


Appendix A

Figures



Mohawk Solar

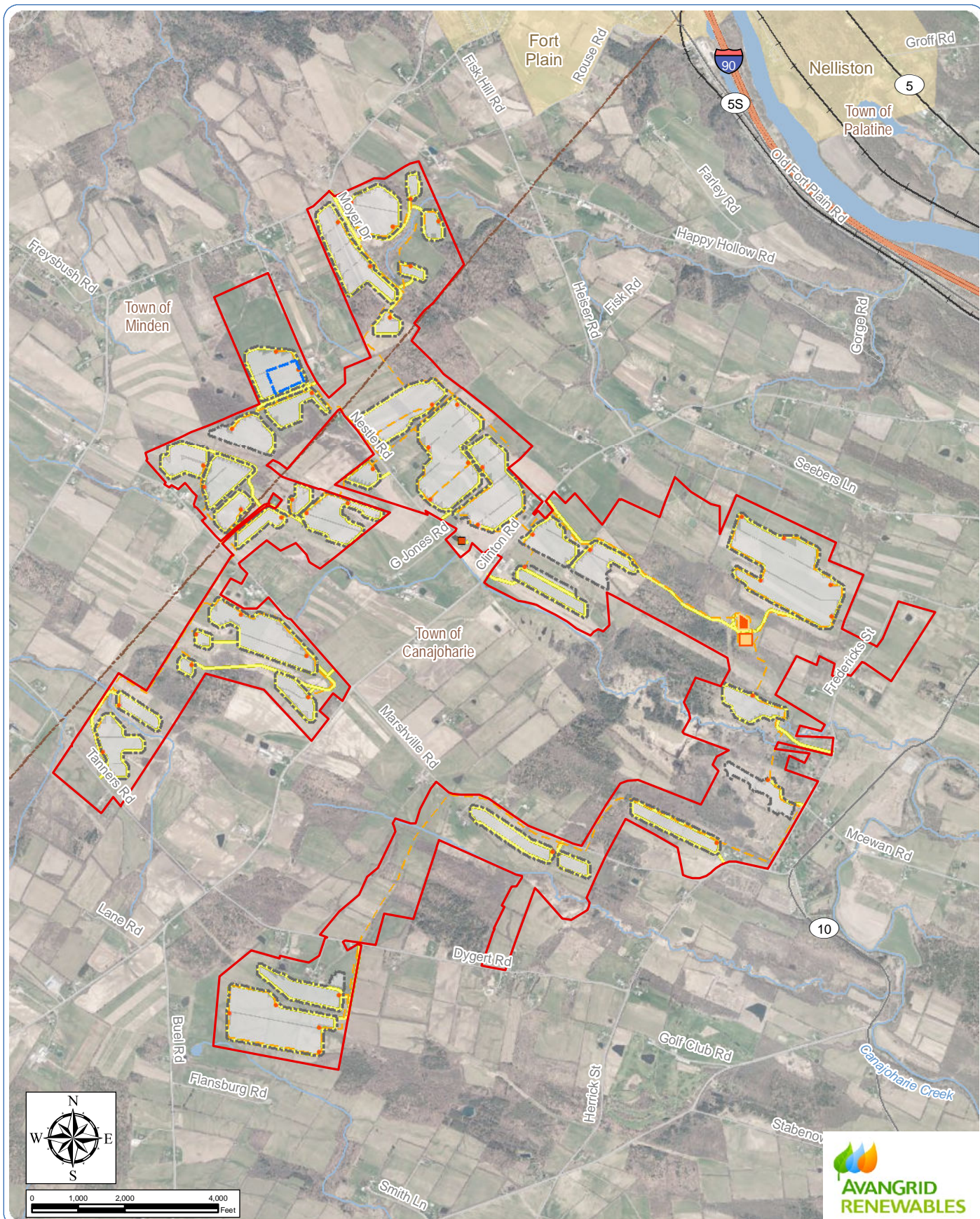
Towns of Canajoharie and Minden, Montgomery County, New York

Wetland Delineation Report

Figure 1: Regional Facility Location

Notes: 1. Basemap: ESRI ArcGIS Online "World Street Map" map service. 2. This map was generated in ArcMap by Environmental Design and Research on May 20, 2019. 3. This is a color graphic. Reproduction in grayscale may misrepresent the data.





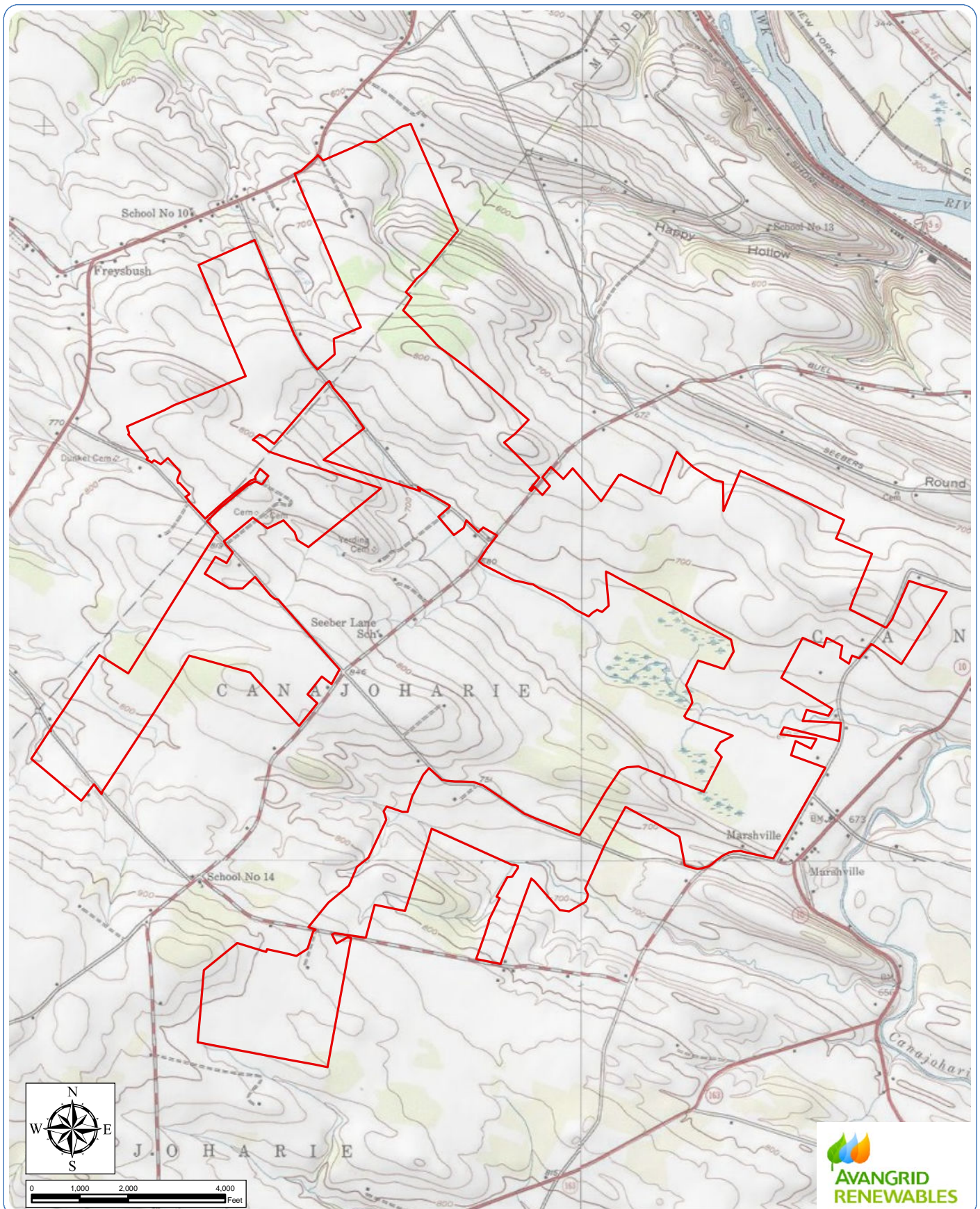
Mohawk Solar

Towns of Canajoharie and Minden, Montgomery County, New York

Wetland Delineation Report

Figure 2. Facility Layout and Wetland Study Area

Notes: 1. Basemap: ESRI ArcGIS Online "World Topographic Map" map service. 2. This map was generated in ArcMap by Environmental Design and Research on May 20, 2019. 3. This is a color graphic. Reproduction in grayscale may misrepresent the data.




Mohawk Solar

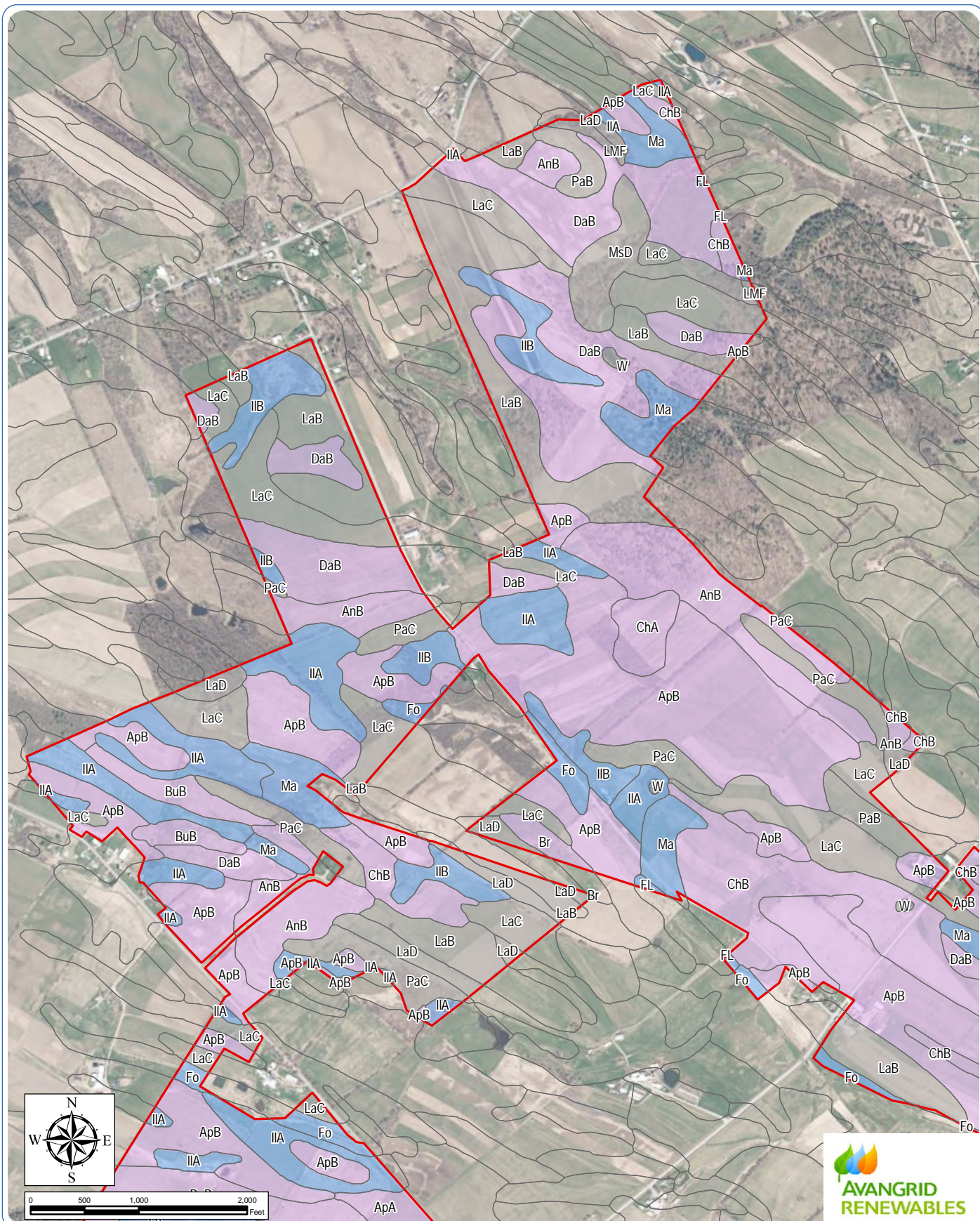
Towns of Canajoharie and Minden, Montgomery County, New York

Wetland Delineation Report

Figure 3: Topographic Mapping

Notes: 1. Basemap: ESRI ArcGIS Online "World Topographic Map" map service. Topography represented in feet above mean sea level (AMSL). 2. This map was generated in ArcMap by Environmental Design and Research on May 20, 2019. 3. This is a color graphic. Reproduction in grayscale may misrepresent the data.

 Study Area



Mohawk Solar

Towns of Canajoharie and Minden, Montgomery County, New York

Wetland Delineation Report

Figure 4: Study Area Soils - Sheet 1 of 4

Notes: 1. Basemap: NYSDOP "2017" Orthoimagery map service. 2. This map was generated in ArcMap by Environmental Design and Research on May 20, 2019. 3. This is a color graphic. Reproduction in grayscale may misrepresent the data.

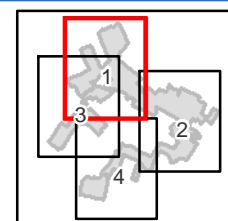
Study Area

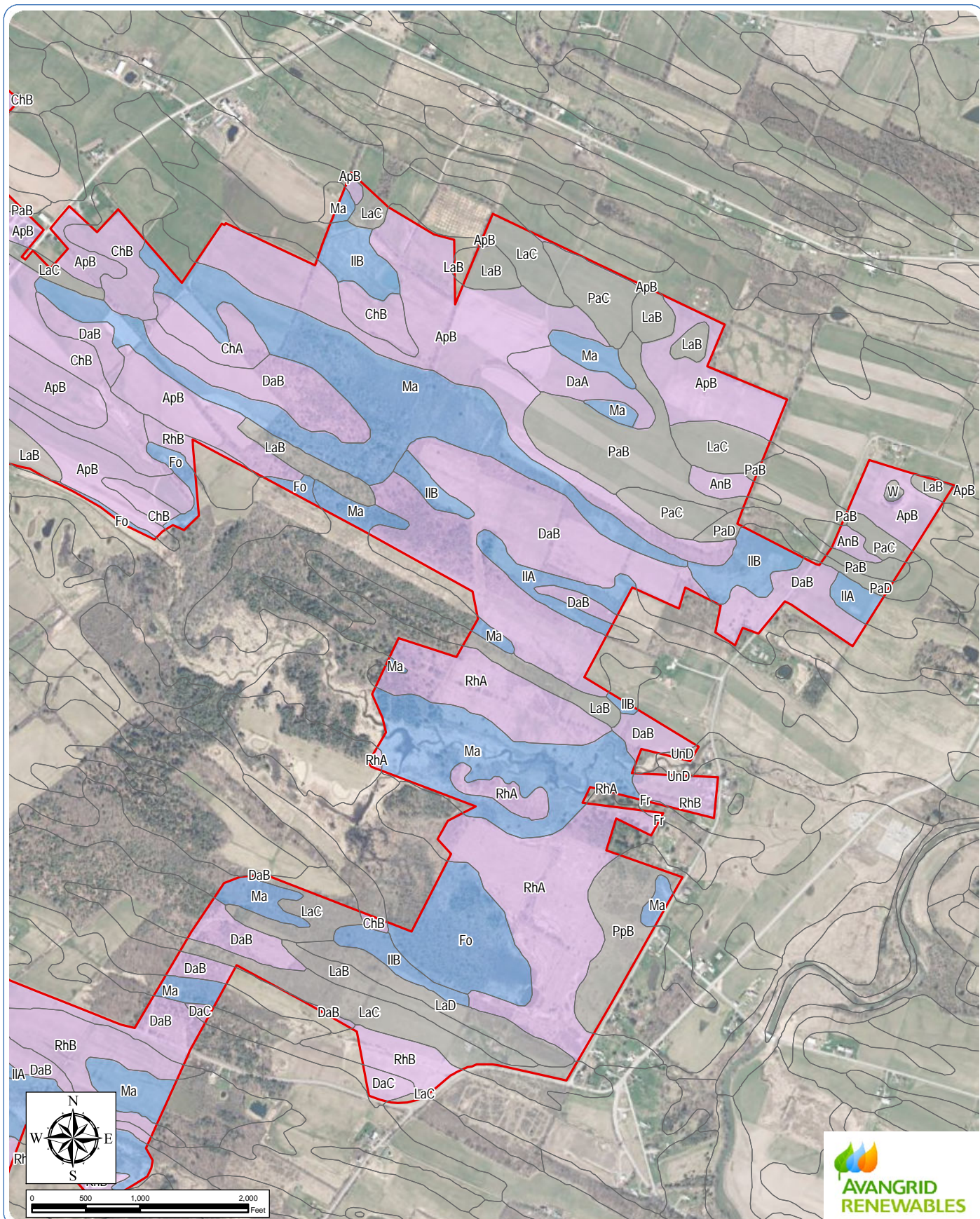
Hydric Soil Rating

Hydric

Potentially Hydric

Not Hydric





Mohawk Solar

Towns of Canajoharie and Minden, Montgomery County, New York

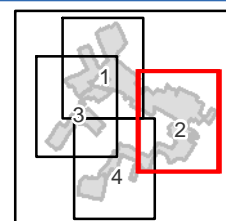
Wetland Delineation Report

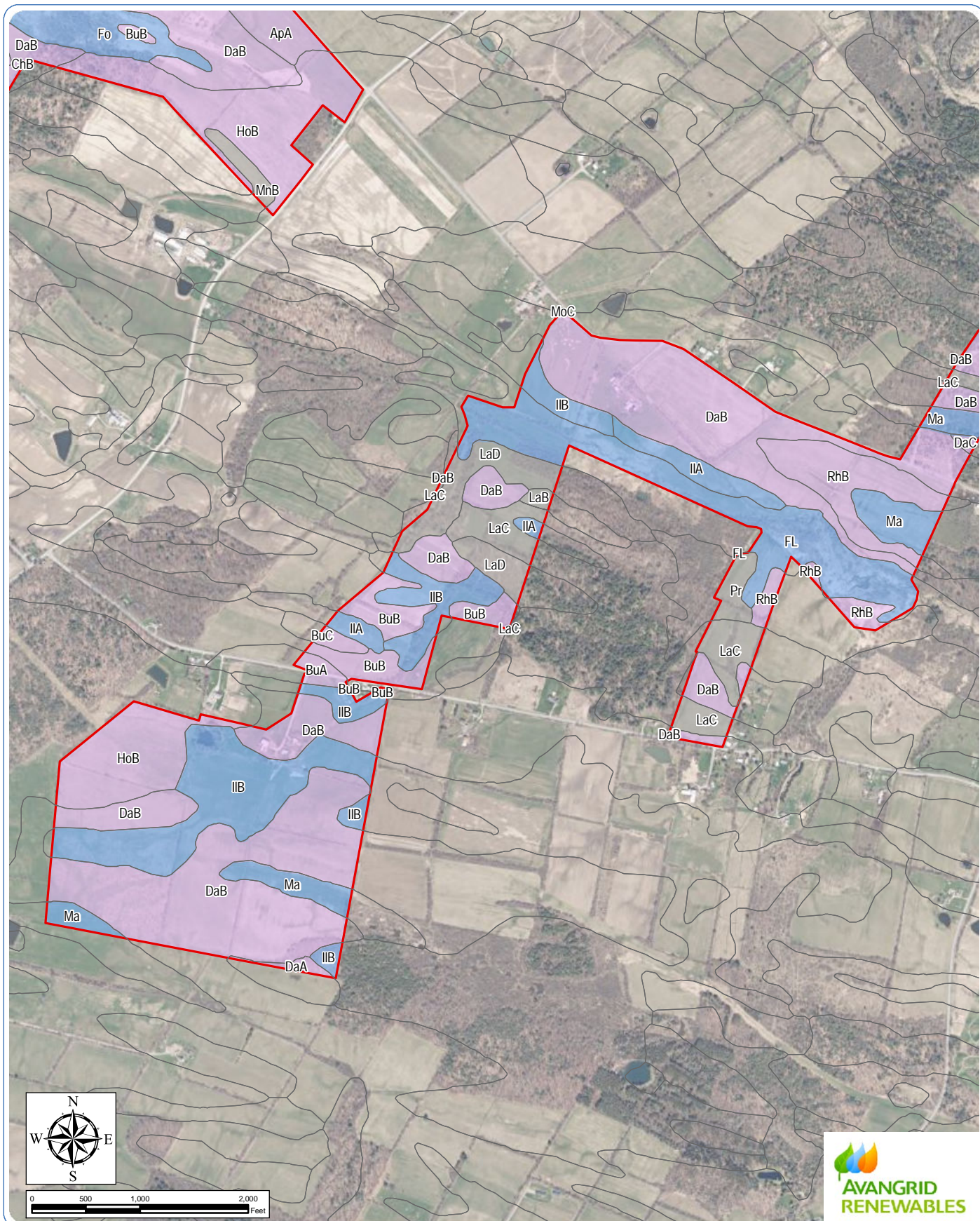
Figure 4: Study Area Soils - Sheet 2 of 4

Notes: 1. Basemap: NYSDOP "2017" Orthoimagery map service. 2. This map was generated in ArcMap by Environmental Design and Research on May 20, 2019. 3. This is a color graphic. Reproduction in grayscale may misrepresent the data.

Study Area Hydric Soil Rating

- Hydric
- Potentially Hydric
- Not Hydric





Mohawk Solar

Towns of Canajoharie and Minden, Montgomery County, New York

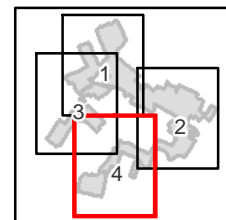
Wetland Delineation Report

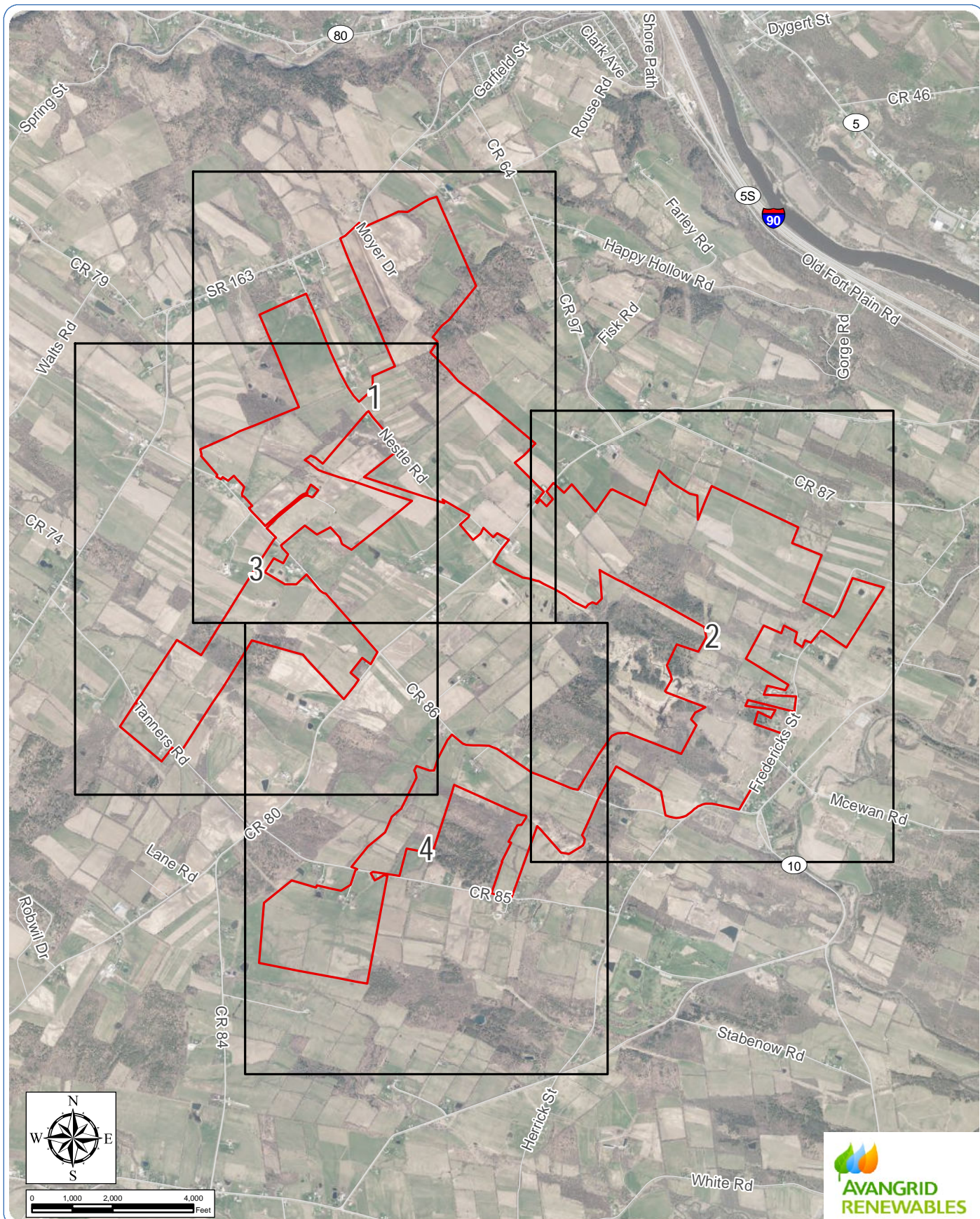
Figure 4: Study Area Soils - Sheet 4 of 4

Notes: 1. Basemap: NYSDOP "2017" Orthoimagery map service. 2. This map was generated in ArcMap by Environmental Design and Research on May 20, 2019. 3. This is a color graphic. Reproduction in grayscale may misrepresent the data.

Study Area Hydric Soil Rating

- Hydric
- Potentially Hydric
- Not Hydric





Mohawk Solar

Towns of Canajoharie and Minden, Montgomery County, New York

Wetland Delineation Report

Figure 5: Mapped Wetlands and Streams - Index

Study Area

Notes: 1. Basemap: ESRI ArcGIS Online "World Topographic Map" map service. 2. This map was generated in ArcMap by Environmental Design and Research on May 20, 2019. 3. This is a color graphic. Reproduction in grayscale may misrepresent the data.



Mohawk Solar

Towns of Canajoharie and Minden, Montgomery County, New York

Wetland Delineation Report

Figure 5: Mapped Wetlands and Streams - Sheet 1 of 4

Notes: 1. Basemap: ESRI ArcGIS Online "World Topographic Map" map service. 2. This map was generated in ArcMap by Environmental Design and Research on May 20, 2019. 3. This is a color graphic. Reproduction in grayscale may misrepresent the data.

Study Area

NYSDEC Mapped Wetland

NYSDEC Stream Classification

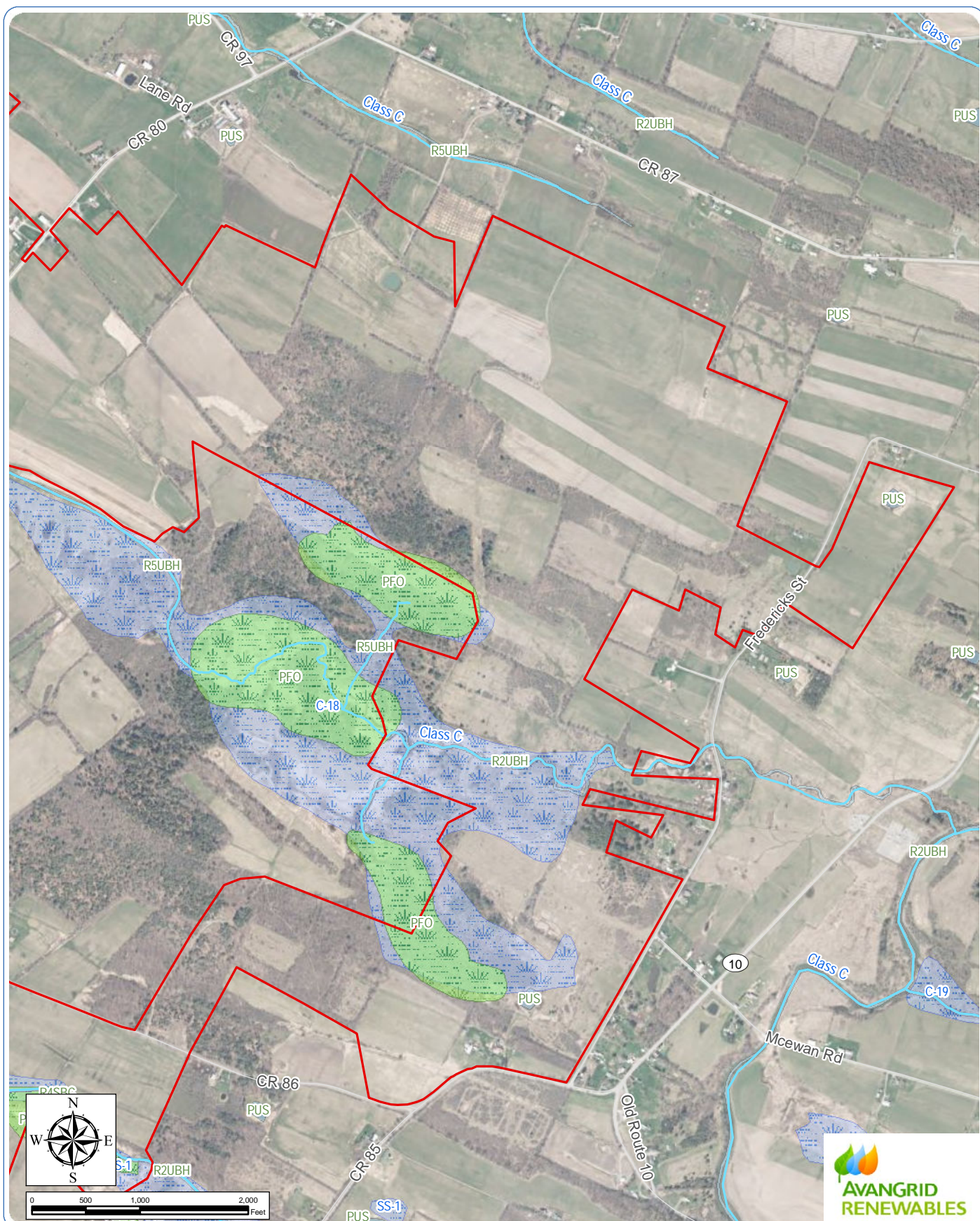
NYS Protected Stream

Unprotected Stream

NWI Mapped Wetland

Freshwater Wetland

Freshwater Pond/Lake/Riverine



Mohawk Solar

Towns of Canajoharie and Minden, Montgomery County, New York

Wetland Delineation Report

Figure 5: Mapped Wetlands and Streams - Sheet 2 of 4

Notes: 1. Basemap: ESRI ArcGIS Online "World Topographic Map" map service. 2. This map was generated in ArcMap by Environmental Design and Research on May 20, 2019. 3. This is a color graphic. Reproduction in grayscale may misrepresent the data.

Study Area

NYSDEC Mapped Wetland

NYSDEC Stream Classification

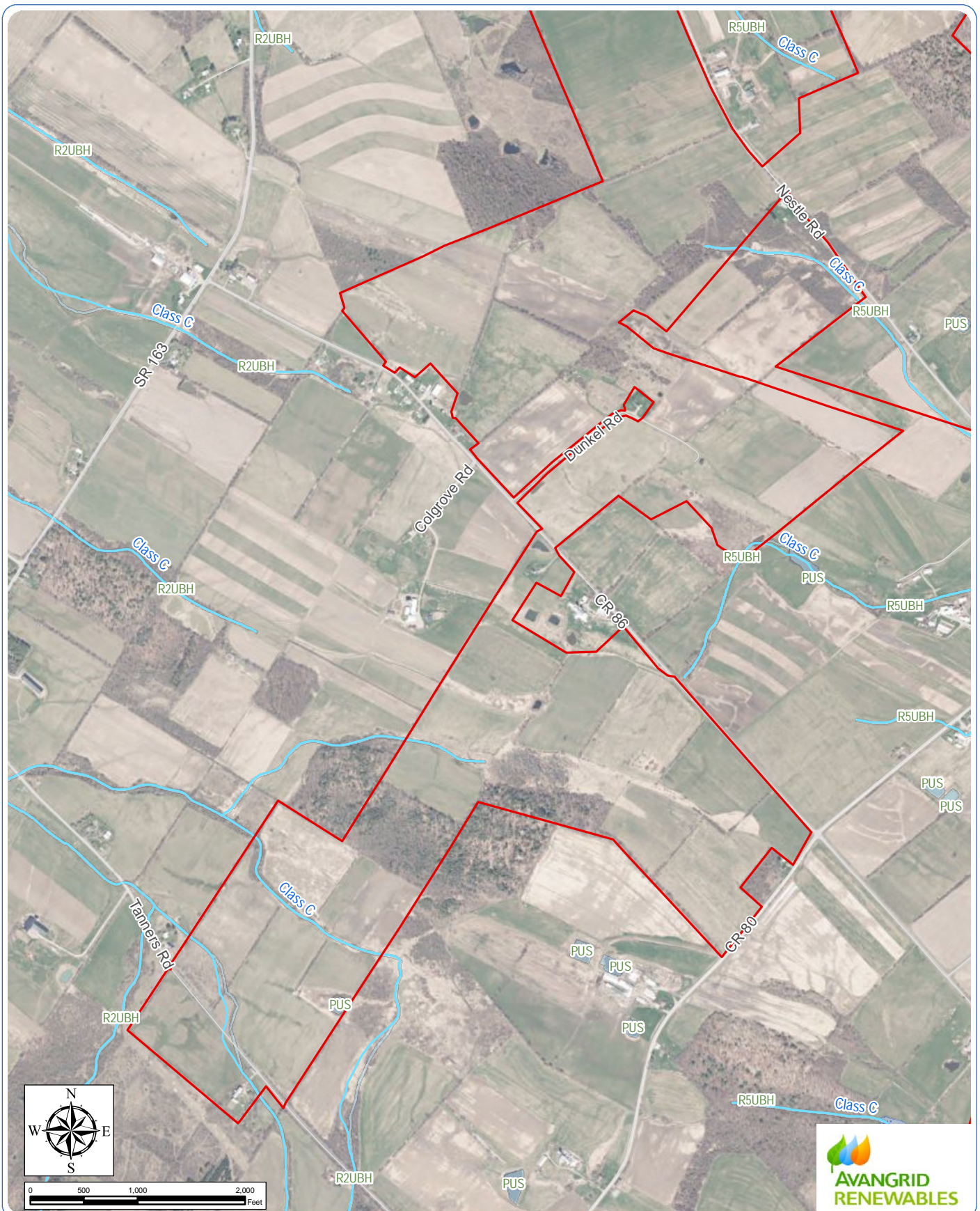
— NYS Protected Stream

— Unprotected Stream

NWI Mapped Wetland

Freshwater Wetland

Freshwater Pond/Lake/Riverine



Mohawk Solar

Towns of Canajoharie and Minden, Montgomery County, New York

Wetland Delineation Report

Figure 5: Mapped Wetlands and Streams - Sheet 3 of 4

Notes: 1. Basemap: ESRI ArcGIS Online "World Topographic Map" map service. 2. This map was generated in ArcMap by Environmental Design and Research on May 20, 2019. 3. This is a color graphic. Reproduction in grayscale may misrepresent the data.

Study Area

NYSDEC Mapped Wetland

NYSDEC Stream Classification

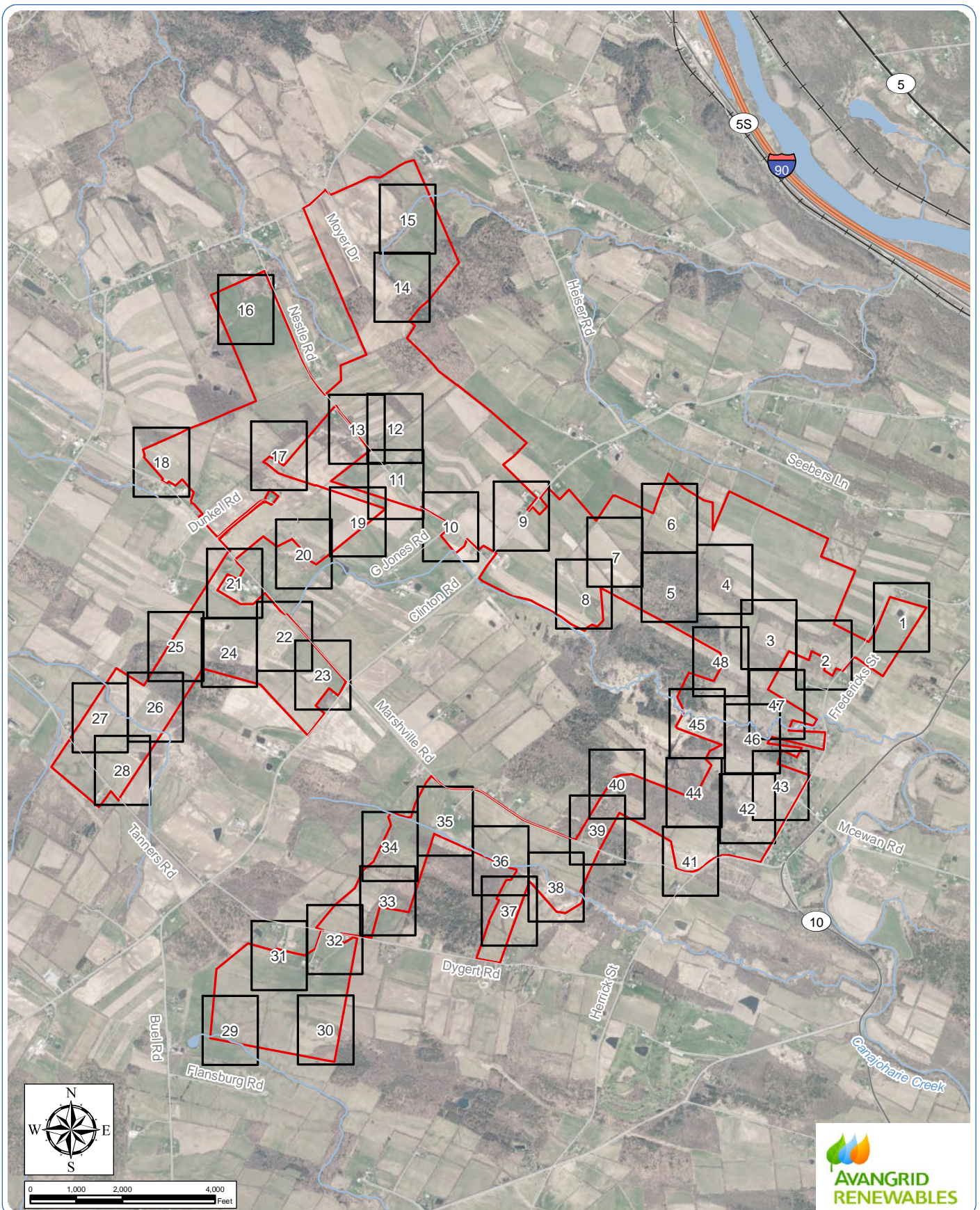
— NYS Protected Stream

— Unprotected Stream

NWI Mapped Wetland

Freshwater Wetland

Freshwater Pond/Lake/Riverine



Mohawk Solar

Towns of Canajoharie and Minden, Montgomery County, New York

Wetland Delineation Report

Figure 6: Delineated Wetlands and Streams - Index

Notes: 1. Basemap: NYSDOP "2017" orthoimagery. 2. This map was generated in ArcMap by Environmental Design and Research on May 20, 2019. 3. This is a color graphic. Reproduction in grayscale may misrepresent the data.

Study Area



Mohawk Solar

Towns of Canajoharie and Minden, Montgomery County, New York

Wetland Delineation Report

Figure 6: Delineated Wetlands and Streams - Sheet 1 of 48

Notes: 1. Basemap: NYSDOP "2017" orthoimagery map service. 2. This map was generated in ArcMap by Environmental Design and Research on May 20, 2019. 3. This is a color graphic. Reproduction in grayscale may misrepresent the data.

- ⊕ Data Sample Point
- Delineated Wetland and Stream Flag
- Wetland Continues Outside Study Area
- Study Area
- Delineated Stream
- Delineated Wetland



Mohawk Solar

Towns of Canajoharie and Minden, Montgomery County, New York

Wetland Delineation Report

Figure 6: Delineated Wetlands and Streams - Sheet 2 of 48

Notes: 1. Basemap: NYSDOP "2017" orthoimagery map service. 2. This map was generated in ArcMap by Environmental Design and Research on May 20, 2019. 3. This is a color graphic. Reproduction in grayscale may misrepresent the data.

- ⊕ Data Sample Point
- Delineated Wetland and Stream Flag
- Wetland Continues Outside Study Area
- ▭ Study Area
- ▭ Delineated Stream
- ▭ Delineated Wetland



Mohawk Solar

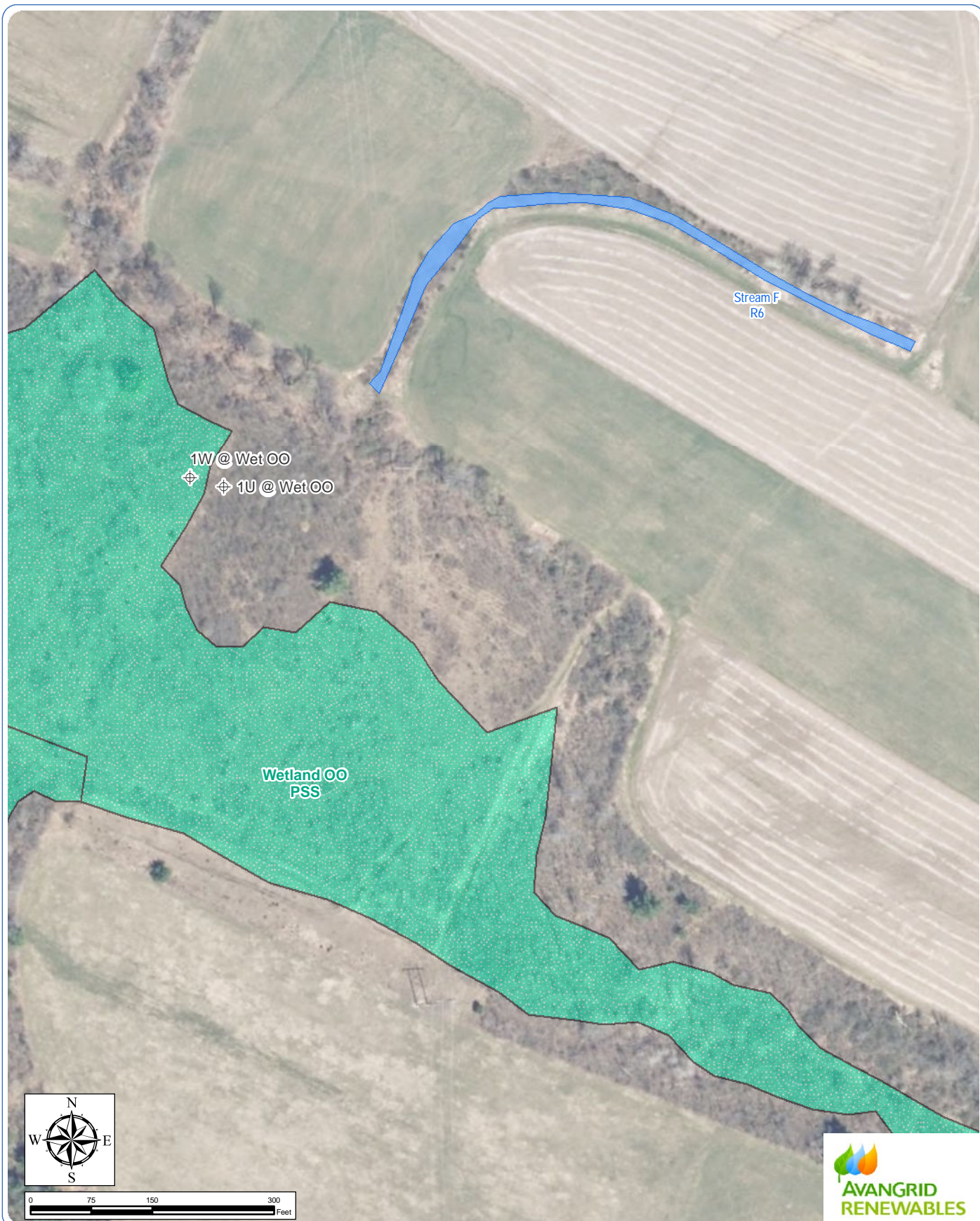
Towns of Canajoharie and Minden, Montgomery County, New York

Wetland Delineation Report

Figure 6: Delineated Wetlands and Streams - Sheet 3 of 48

Notes: 1. Basemap: NYSDOP "2017" orthoimagery map service. 2. This map was generated in ArcMap by Environmental Design and Research on May 20, 2019. 3. This is a color graphic. Reproduction in grayscale may misrepresent the data.

- ⊕ Data Sample Point
- Delineated Wetland and Stream Flag
- Wetland Continues Outside Study Area
- Study Area
- Delineated Stream
- Delineated Wetland



Mohawk Solar

Towns of Canajoharie and Minden, Montgomery County, New York

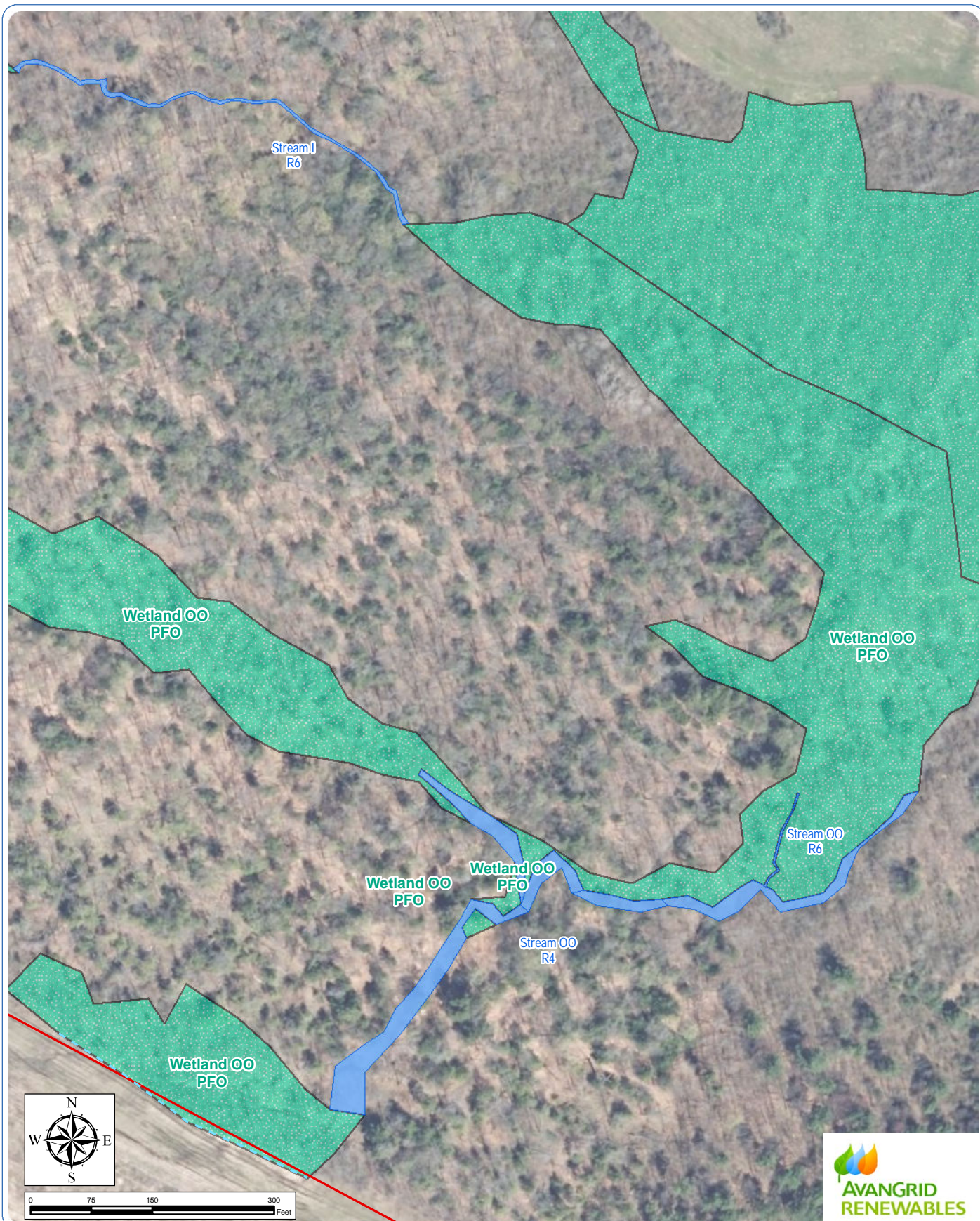
Wetland Delineation Report

Figure 6: Delineated Wetlands and Streams - Sheet 4 of 48

Notes: 1. Basemap: NYSDOP "2017" orthoimagery map service. 2. This map was generated in ArcMap by Environmental Design and Research on May 20, 2019. 3. This is a color graphic. Reproduction in grayscale may misrepresent the data.

- ⊕ Data Sample Point
- Delineated Wetland and Stream Flag
- Wetland Continues Outside Study Area
- Study Area
- Delineated Stream
- Delineated Wetland





Mohawk Solar

Towns of Canajoharie and Minden, Montgomery County, New York

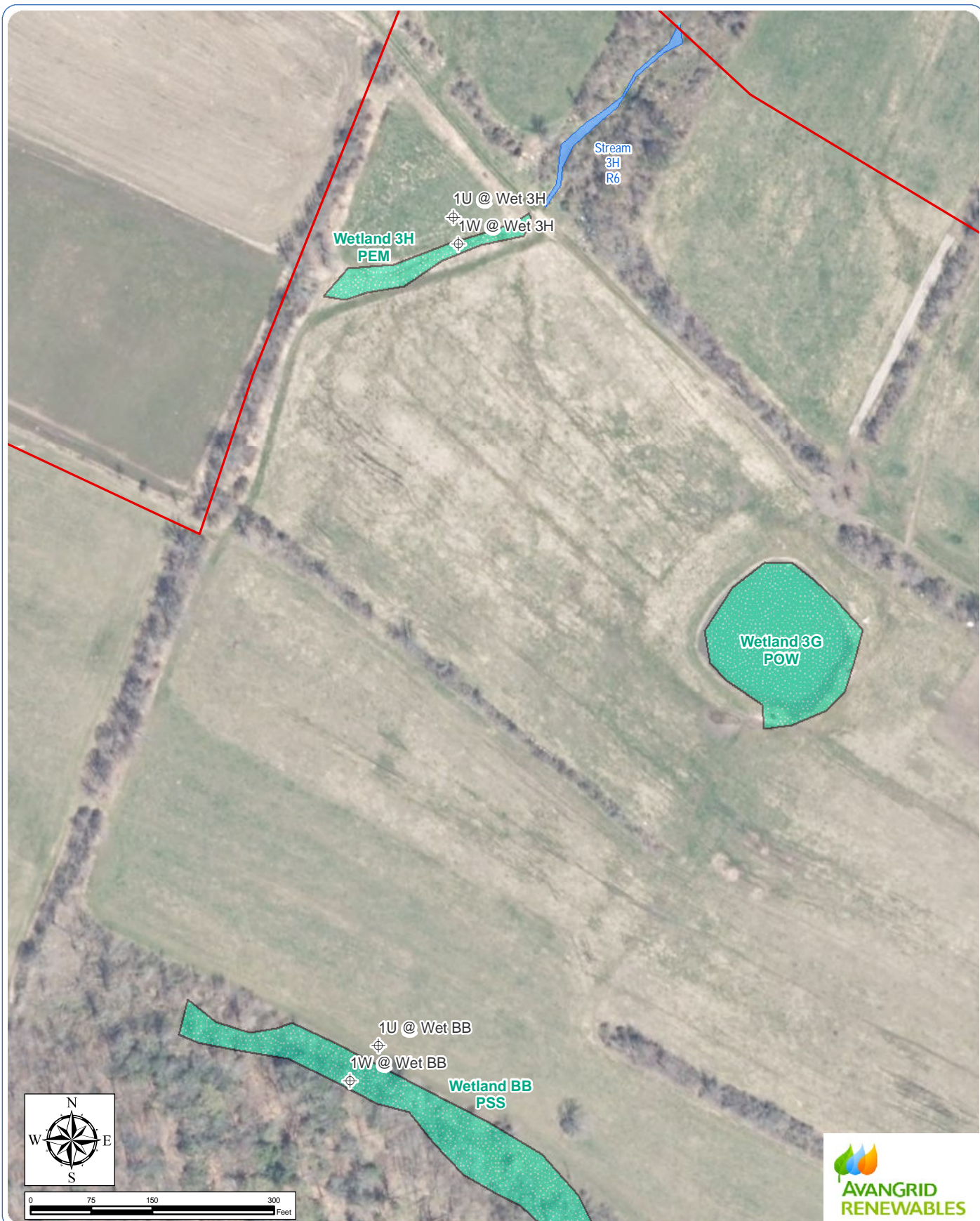
Wetland Delineation Report

Figure 6: Delineated Wetlands and Streams - Sheet 5 of 48

Notes: 1. Basemap: NYSDOP "2017" orthoimagery map service. 2. This map was generated in ArcMap by Environmental Design and Research on May 20, 2019. 3. This is a color graphic. Reproduction in grayscale may misrepresent the data.

- ⊕ Data Sample Point
- Delineated Wetland and Stream Flag
- Wetland Continues Outside Study Area
- ▭ Study Area
- ▭ Delineated Stream
- ▭ Delineated Wetland





Mohawk Solar

Towns of Canajoharie and Minden, Montgomery County, New York

Wetland Delineation Report

Figure 6: Delineated Wetlands and Streams - Sheet 6 of 48

Notes: 1. Basemap: NYSDOP "2017" orthoimagery map service. 2. This map was generated in ArcMap by Environmental Design and Research on May 20, 2019. 3. This is a color graphic. Reproduction in grayscale may misrepresent the data.

- ⊕ Data Sample Point
- Delineated Wetland and Stream Flag
- Wetland Continues Outside Study Area
- [Red Outline] Study Area
- [Blue Line] Delineated Stream
- [Green Stippled] Delineated Wetland



Mohawk Solar

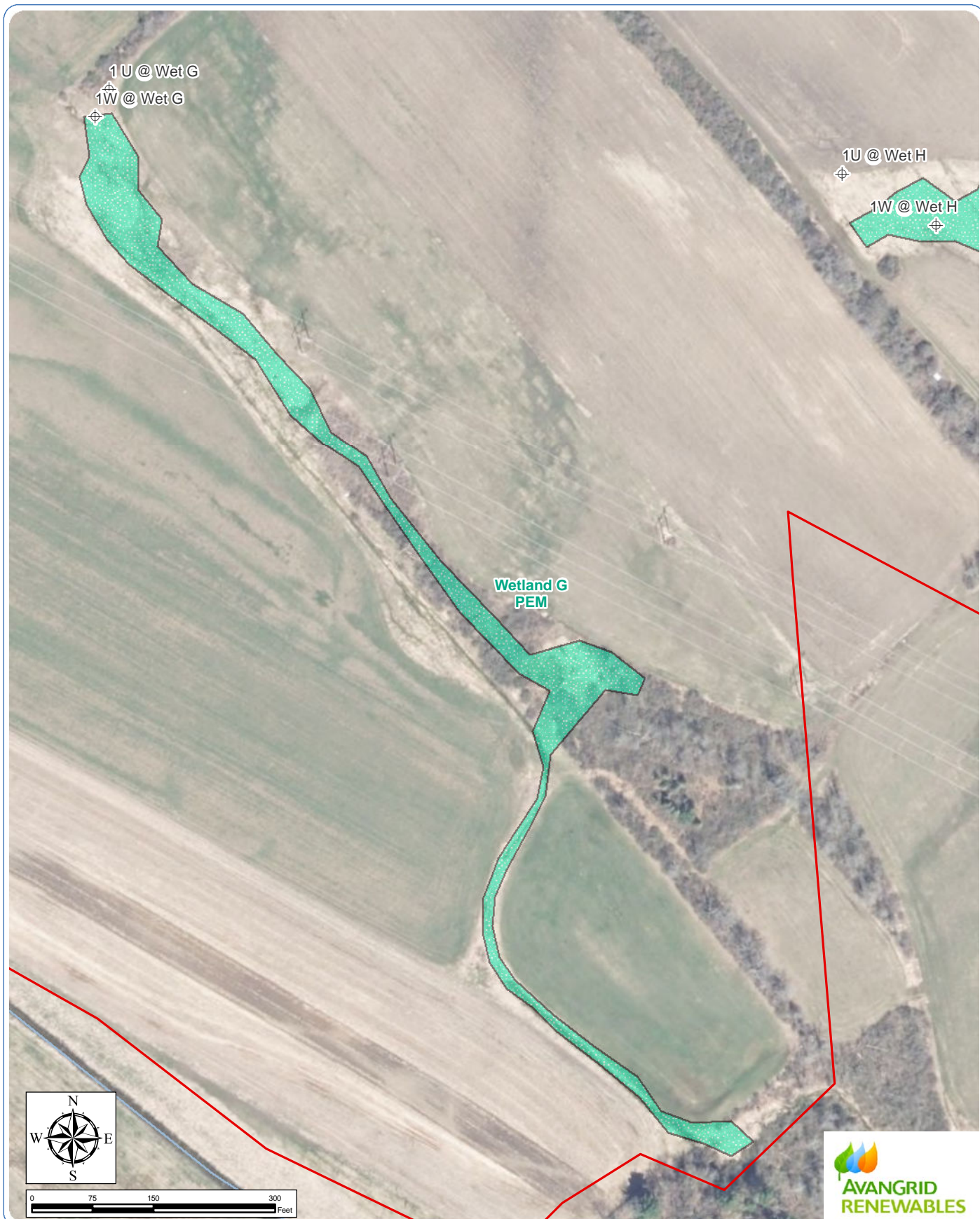
Towns of Canajoharie and Minden, Montgomery County, New York

Wetland Delineation Report

Figure 6: Delineated Wetlands and Streams - Sheet 7 of 48

Notes: 1. Basemap: NYSDOP "2017" orthoimagery map service. 2. This map was generated in ArcMap by Environmental Design and Research on May 20, 2019. 3. This is a color graphic. Reproduction in grayscale may misrepresent the data.

- ⊕ Data Sample Point
- Delineated Wetland and Stream Flag
- Wetland Continues Outside Study Area
- [Red Outline] Study Area
- [Blue Outline] Delineated Stream
- [Green Dotted Outline] Delineated Wetland



Mohawk Solar

Towns of Canajoharie and Minden, Montgomery County, New York

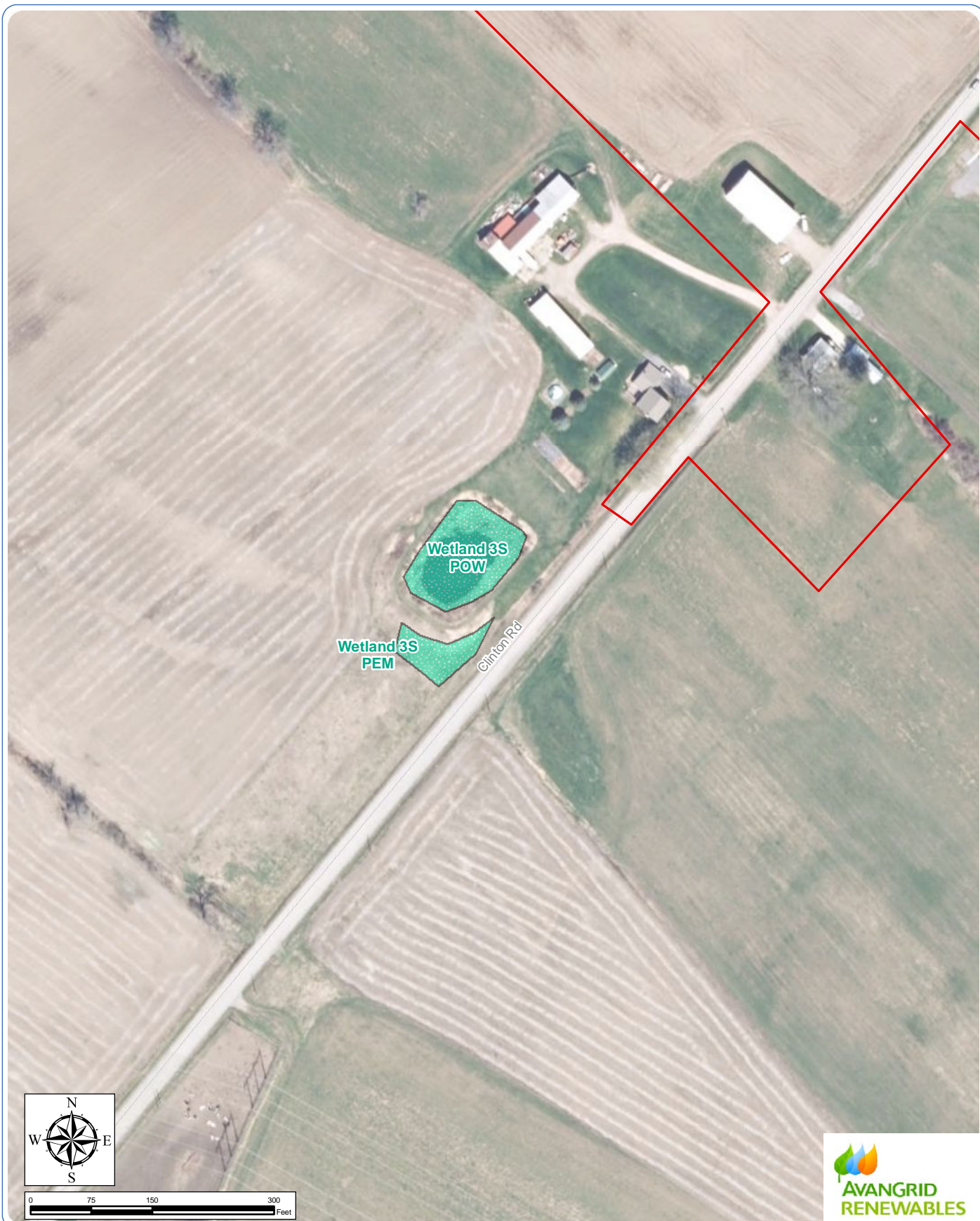
Wetland Delineation Report

Figure 6: Delineated Wetlands and Streams - Sheet 8 of 48

Notes: 1. Basemap: NYSDOP "2017" orthoimagery map service. 2. This map was generated in ArcMap by Environmental Design and Research on May 20, 2019. 3. This is a color graphic. Reproduction in grayscale may misrepresent the data.

- ⊕ Data Sample Point
- Delineated Wetland and Stream Flag
- Wetland Continues Outside Study Area
- Study Area
- Delineated Stream
- Delineated Wetland





Mohawk Solar

Towns of Canajoharie and Minden, Montgomery County, New York

Wetland Delineation Report

Figure 6: Delineated Wetlands and Streams - Sheet 9 of 48

Notes: 1. Basemap: NYSDOP "2017" orthoimagery map service. 2. This map was generated in ArcMap by Environmental Design and Research on May 20, 2019. 3. This is a color graphic. Reproduction in grayscale may misrepresent the data.

- ⊕ Data Sample Point
- Delineated Wetland and Stream Flag
- Wetland Continues Outside Study Area
- ▭ Study Area
- ▭ Delineated Stream
- ▭ Delineated Wetland



Mohawk Solar

Towns of Canajoharie and Minden, Montgomery County, New York

Wetland Delineation Report

Figure 6: Delineated Wetlands and Streams - Sheet 10 of 48

Notes: 1. Basemap: NYSDOP "2017" orthoimagery map service. 2. This map was generated in ArcMap by Environmental Design and Research on May 20, 2019. 3. This is a color graphic. Reproduction in grayscale may misrepresent the data.

- ⊕ Data Sample Point
- Delineated Wetland and Stream Flag
- Wetland Continues Outside Study Area
- Study Area
- Delineated Stream
- Delineated Wetland





Mohawk Solar

Towns of Canajoharie and Minden, Montgomery County, New York

Wetland Delineation Report

Figure 6: Delineated Wetlands and Streams - Sheet 11 of 48

Notes: 1. Basemap: NYSDOP "2017" orthoimagery map service. 2. This map was generated in ArcMap by Environmental Design and Research on May 20, 2019. 3. This is a color graphic. Reproduction in grayscale may misrepresent the data.

- ⊕ Data Sample Point
- Delineated Wetland and Stream Flag
- Wetland Continues Outside Study Area
- [Red Outline] Study Area
- [Blue Outline] Delineated Stream
- [Green Dotted Outline] Delineated Wetland



Mohawk Solar

Towns of Canajoharie and Minden, Montgomery County, New York

Wetland Delineation Report

Figure 6: Delineated Wetlands and Streams - Sheet 12 of 48

Notes: 1. Basemap: NYSDOP "2017" orthoimagery map service. 2. This map was generated in ArcMap by Environmental Design and Research on May 20, 2019. 3. This is a color graphic. Reproduction in grayscale may misrepresent the data.

- ⊕ Data Sample Point
- Delineated Wetland and Stream Flag
- Wetland Continues Outside Study Area
- [Red Outline] Study Area
- [Blue Line] Delineated Stream
- [Green Stippled] Delineated Wetland



Mohawk Solar

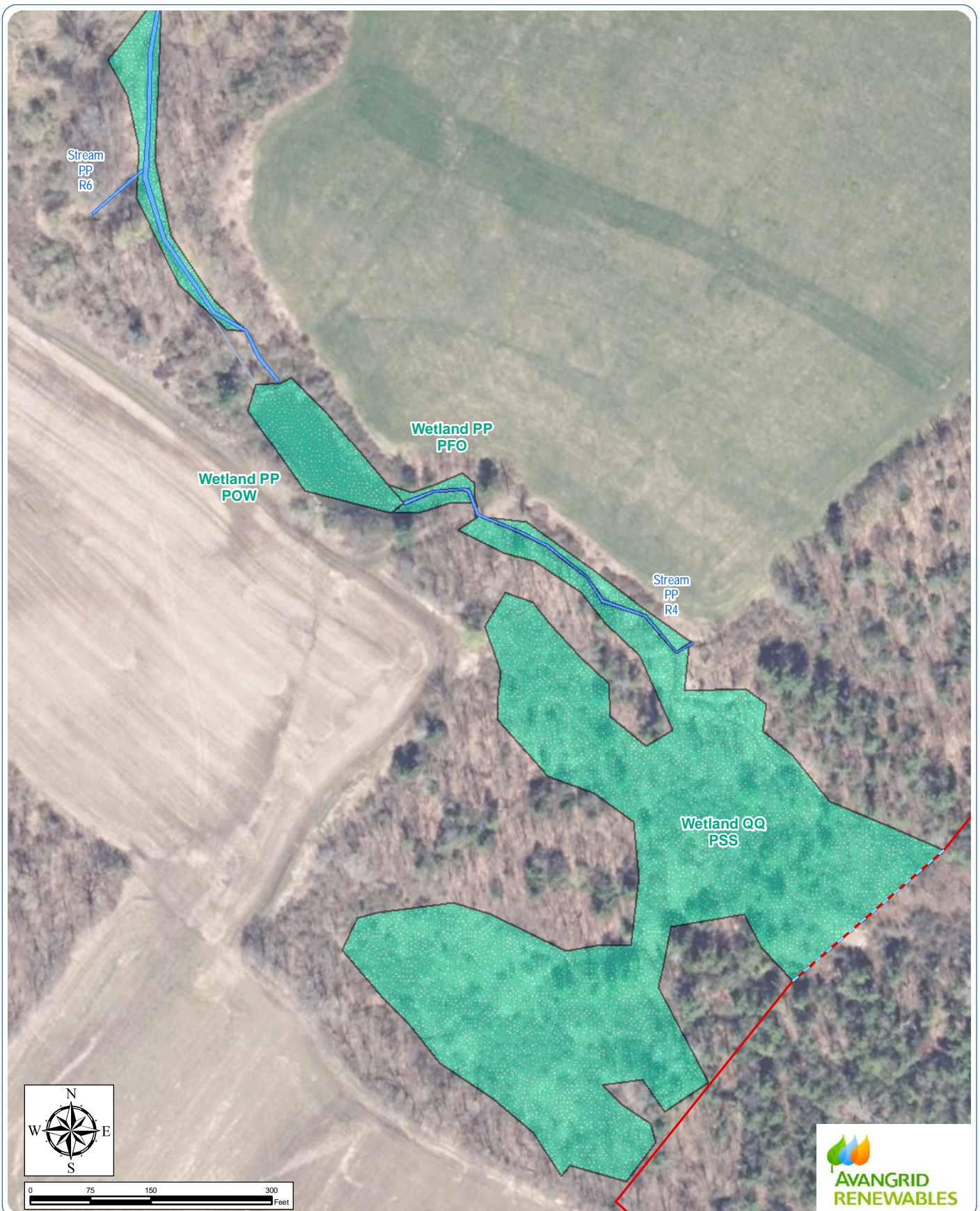
Towns of Canajoharie and Minden, Montgomery County, New York

Wetland Delineation Report

Figure 6: Delineated Wetlands and Streams - Sheet 13 of 48

Notes: 1. Basemap: NYSDOP "2017" orthoimagery map service. 2. This map was generated in ArcMap by Environmental Design and Research on May 20, 2019. 3. This is a color graphic. Reproduction in grayscale may misrepresent the data.

- ⊕ Data Sample Point
- Delineated Wetland and Stream Flag
- Wetland Continues Outside Study Area
- [Red Outline] Study Area
- [Blue Outline] Delineated Stream
- [Green Stippled] Delineated Wetland



Mohawk Solar

Towns of Canajoharie and Minden, Montgomery County, New York

Wetland Delineation Report

Figure 6: Delineated Wetlands and Streams - Sheet 14 of 48

Notes: 1. Basemap: NYSDOP "2017" orthoimagery map service. 2. This map was generated in ArcMap by Environmental Design and Research on May 20, 2019. 3. This is a color graphic. Reproduction in grayscale may misrepresent the data.

- ⊕ Data Sample Point
- Delineated Wetland and Stream Flag
- Wetland Continues Outside Study Area
- ▭ Study Area
- ▬ Delineated Stream
- ▨ Delineated Wetland





Mohawk Solar

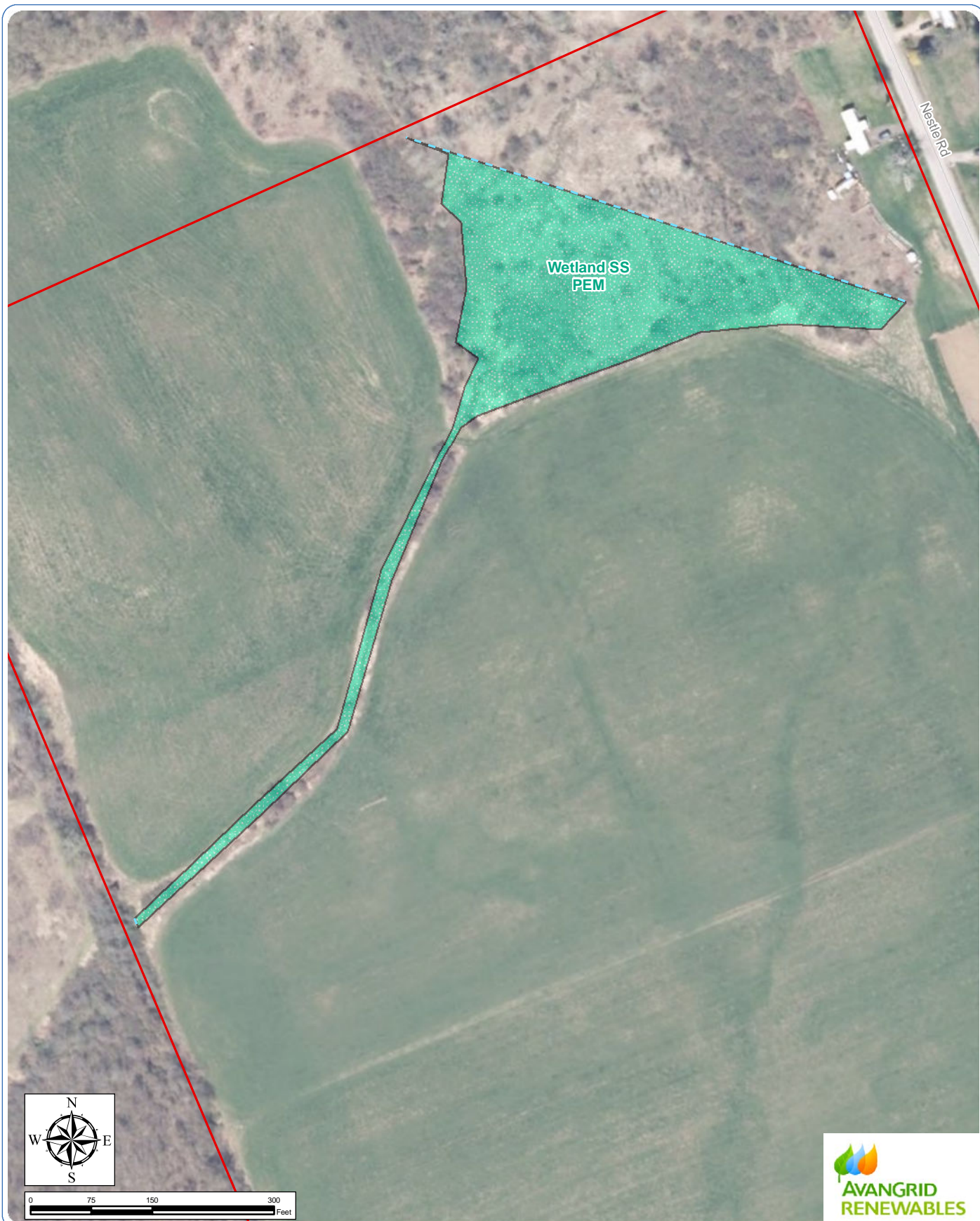
Towns of Canajoharie and Minden, Montgomery County, New York

Wetland Delineation Report

Figure 6: Delineated Wetlands and Streams - Sheet 15 of 48

Notes: 1. Basemap: NYSDOP "2017" orthoimagery map service. 2. This map was generated in ArcMap by Environmental Design and Research on May 20, 2019. 3. This is a color graphic. Reproduction in grayscale may misrepresent the data.

- ⊕ Data Sample Point
- Delineated Wetland and Stream Flag
- Wetland Continues Outside Study Area
- [Red Outline] Study Area
- [Blue Line] Delineated Stream
- [Green Stippled] Delineated Wetland



Mohawk Solar

Towns of Canajoharie and Minden, Montgomery County, New York

Wetland Delineation Report

Figure 6: Delineated Wetlands and Streams - Sheet 16 of 48

Notes: 1. Basemap: NYSDOP "2017" orthoimagery map service. 2. This map was generated in ArcMap by Environmental Design and Research on May 20, 2019. 3. This is a color graphic. Reproduction in grayscale may misrepresent the data.

- ⊕ Data Sample Point
- Delineated Wetland and Stream Flag
- Wetland Continues Outside Study Area
- Study Area
- Delineated Stream
- Delineated Wetland



Mohawk Solar

Towns of Canajoharie and Minden, Montgomery County, New York

Wetland Delineation Report

Figure 6: Delineated Wetlands and Streams - Sheet 17 of 48

Notes: 1. Basemap: NYSDOP "2017" orthoimagery map service. 2. This map was generated in ArcMap by Environmental Design and Research on May 20, 2019. 3. This is a color graphic. Reproduction in grayscale may misrepresent the data.

- ⊕ Data Sample Point
- Delineated Wetland and Stream Flag
- Wetland Continues Outside Study Area
- [Red Outline] Study Area
- [Blue Line] Delineated Stream
- [Green Stippled] Delineated Wetland



Mohawk Solar

Towns of Canajoharie and Minden, Montgomery County, New York

Wetland Delineation Report

Figure 6: Delineated Wetlands and Streams - Sheet 18 of 48

Notes: 1. Basemap: NYSDOP "2017" orthoimagery map service. 2. This map was generated in ArcMap by Environmental Design and Research on May 20, 2019. 3. This is a color graphic. Reproduction in grayscale may misrepresent the data.

- ⊕ Data Sample Point
- Delineated Wetland and Stream Flag
- Wetland Continues Outside Study Area
- ▭ Study Area
- ▭ Delineated Stream
- ▭ Delineated Wetland





Mohawk Solar

Towns of Canajoharie and Minden, Montgomery County, New York

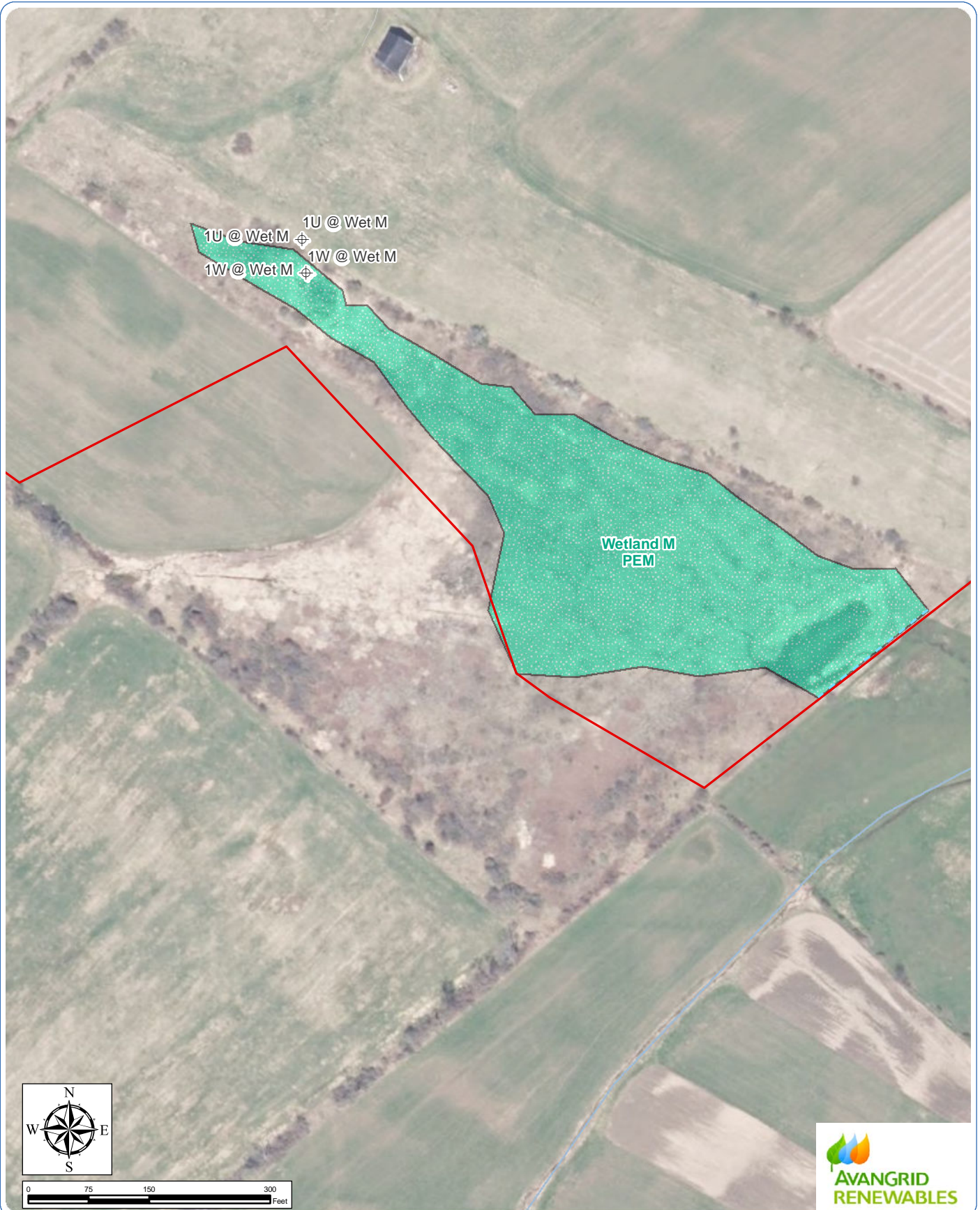
Wetland Delineation Report

Figure 6: Delineated Wetlands and Streams - Sheet 19 of 48

Notes: 1. Basemap: NYSDOP "2017" orthoimagery map service. 2. This map was generated in ArcMap by Environmental Design and Research on May 20, 2019. 3. This is a color graphic. Reproduction in grayscale may misrepresent the data.

- ⊕ Data Sample Point
- Delineated Wetland and Stream Flag
- Wetland Continues Outside Study Area
- [Red Outline] Study Area
- [Blue Outline] Delineated Stream
- [Green Hatched] Delineated Wetland





Mohawk Solar

Towns of Canajoharie and Minden, Montgomery County, New York

Wetland Delineation Report

Figure 6: Delineated Wetlands and Streams - Sheet 20 of 48

Notes: 1. Basemap: NYSDOP "2017" orthoimagery map service. 2. This map was generated in ArcMap by Environmental Design and Research on May 20, 2019. 3. This is a color graphic. Reproduction in grayscale may misrepresent the data.

- ⊕ Data Sample Point
- Delineated Wetland and Stream Flag
- Wetland Continues Outside Study Area
- Study Area
- Delineated Stream
- Delineated Wetland

