

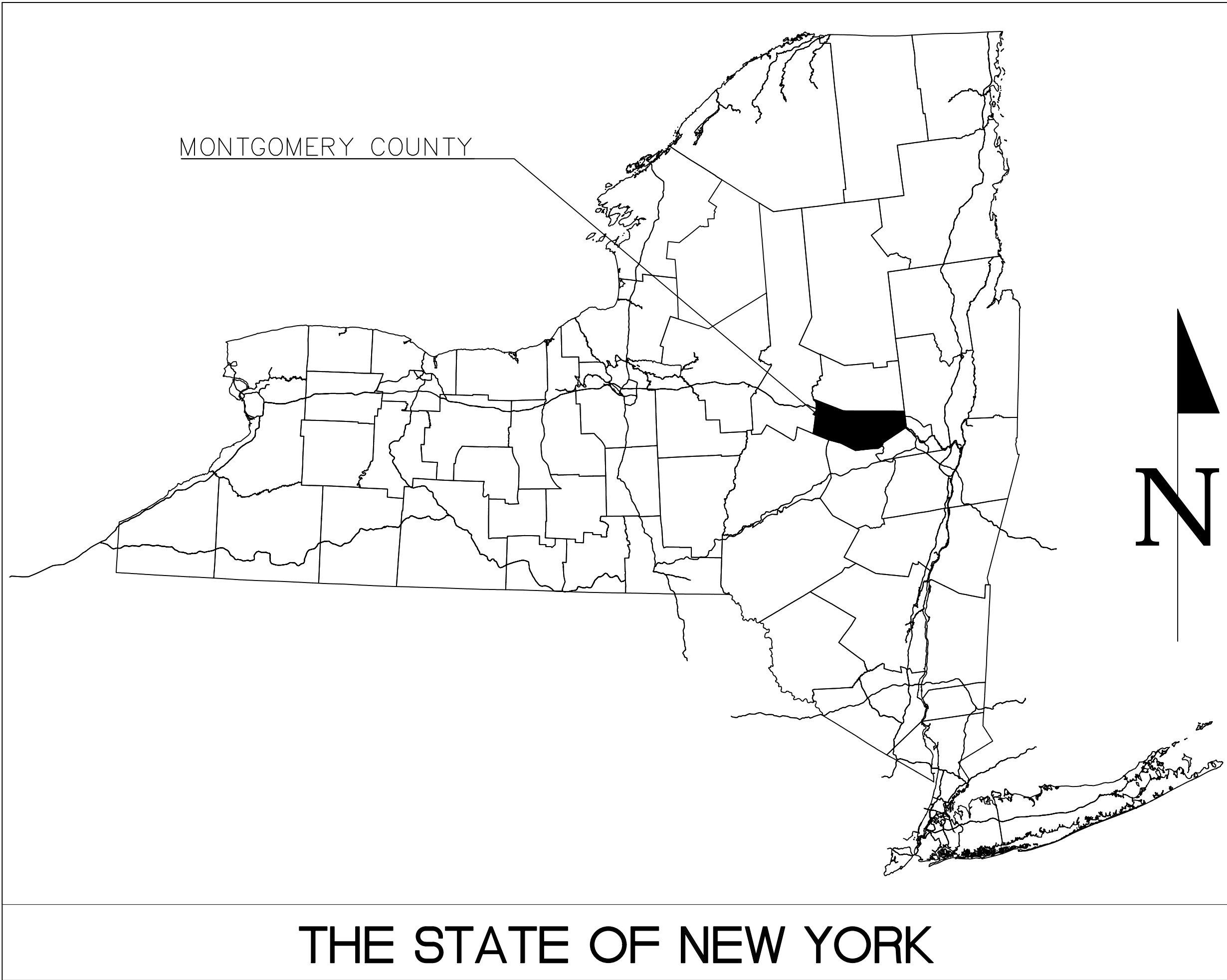
MOHAWK SOLAR PROJECT

CIVIL - PRELIMINARY DESIGN DRAWINGS

Civil Deliverables															
Dwg. No.	Drawing Title	Date	Rev.	Date	Rev.	Date	Rev.	Date	Rev.	Date	Rev.	Date	Rev.	Date	Rev.
MHS-C-101-01	Civil Cover Sheet	10/15/18	A	12/19/18	B	02/22/19	C	04/17/19	D	04/30/19	E	05/28/19	F		
MHS-C-101-02	Civil Drawing List & General Notes Sheet	10/15/18	A	12/19/18	B	02/22/19	C	04/17/19	D						
MHS-C-101-03	Overall Site Area Index	10/15/18	A	12/19/18	B	02/22/19	C	04/17/19	D	04/30/19	E				
MHS-C-101-04	Soils Map Index	12/19/18	A	02/22/19	B	04/17/19	C								
MHS-C-110-01	Civil Site Details (Sheet 1 of 4)	10/15/18	A	12/19/18	B	02/22/19	C	04/17/19	D						
MHS-C-110-02	Civil Site Details (Sheet 2 of 4)	10/15/18	A	12/19/18	B	02/22/19	C	04/17/19	D						
MHS-C-110-03	Civil Site Details (Sheet 3 of 4)	10/15/18	A	12/19/18	B	02/22/19	C	04/17/19	D	05/28/19	E				
MHS-C-110-04	Civil Site Details (Sheet 4 of 4)	10/15/18	A	12/19/18	B	02/22/19	C	04/17/19	D						
MHS-C-111-01	Civil Site Plan - Sheet 1	10/15/18	A	12/19/18	B	02/22/19	C	04/17/19	D						
MHS-C-111-02	Civil Site Plan - Sheet 2	10/15/18	A	12/19/18	B	02/22/19	C	04/17/19	D						
MHS-C-111-03	Civil Site Plan - Sheet 3	10/15/18	A	12/19/18	B	02/22/19	C	04/17/19	D						
MHS-C-111-04	Civil Site Plan - Sheet 4	10/15/18	A	12/19/18	B	02/22/19	C	04/17/19	D						
MHS-C-111-05	Civil Site Plan - Sheet 5	10/15/18	A	12/19/18	B	02/22/19	C	04/17/19	D						
MHS-C-111-06	Civil Site Plan - Sheet 6	10/15/18	A	12/19/18	B	02/22/19	C	04/17/19	D						
MHS-C-111-07	Civil Site Plan - Sheet 7	10/15/18	A	12/19/18	B	02/22/19	C	04/17/19	D						
MHS-C-111-08	Civil Site Plan - Sheet 8	10/15/18	A	12/19/18	B	02/22/19	C	04/17/19	D						
MHS-C-111-09	Civil Site Plan - Sheet 9	10/15/18	A	12/19/18	B	02/22/19	C	04/17/19	D						
MHS-C-111-10	Civil Site Plan - Sheet 10	10/15/18	A	12/19/18	B	02/22/19	C	04/17/19	D						
MHS-C-111-11	Civil Site Plan - Sheet 11	10/15/18	A	12/19/18	B	02/22/19	C	04/17/19	D						
MHS-C-111-12	Civil Site Plan - Sheet 12	10/15/18	A	12/19/18	B	02/22/19	C	04/17/19	D						
MHS-C-111-13	Civil Site Plan - Sheet 13	10/15/18	A	12/19/18	B	02/22/19	C	04/17/19	D						
MHS-C-111-14	Civil Site Plan - Sheet 14	10/15/18	A	12/19/18	B	02/22/19	C	04/17/19	D						
MHS-C-111-15	Civil Site Plan - Sheet 15	10/15/18	A	12/19/18	B	02/22/19	C	04/17/19	D						
MHS-C-111-16	Civil Site Plan - Sheet 16	10/15/18	A	12/19/18	B	02/22/19	C	04/17/19	D						
MHS-C-111-17	Civil Site Plan - Sheet 17	10/15/18	A	12/19/18	B	02/22/19	C	04/17/19	D						
MHS-C-111-18	Civil Site Plan - Sheet 18	10/15/18	A	12/19/18	B	02/22/19	C	04/17/19	D						
MHS-C-111-19	Civil Site Plan - Sheet 19	10/15/18	A	12/19/18	B	02/22/19	C	04/17/19	D						
MHS-C-111-20	Civil Site Plan - Sheet 20	10/15/18	A	12/19/18	B	02/22/19	C	04/17/19	D						
MHS-C-111-21	Civil Site Plan - Sheet 21	10/15/18	A	12/19/18	B	02/22/19	C	04/17/19	D						
MHS-C-111-22	Civil Site Plan - Sheet 22	10/15/18	A	12/19/18	B	02/22/19	C	04/17/19	D						
MHS-C-111-23	Civil Site Plan - Sheet 23	10/15/18	A	12/19/18	B	02/22/19	C	04/17/19	D						
MHS-C-111-24	Civil Site Plan - Sheet 24	10/15/18	A	12/19/18	B	02/22/19	C	04/17/19	D						
MHS-C-111-25	Civil Site Plan - Sheet 25	10/15/18	A	12/19/18	B	02/22/19	C	04/17/19	D						
MHS-C-111-26	Civil Site Plan - Sheet 26	10/15/18	A	12/19/18	B	02/22/19	C	04/17/19	D						
MHS-C-111-27	Civil Site Plan - Sheet 27	10/15/18	A	12/19/18	B	02/22/19	C	04/17/19	D						
MHS-C-111-28	Civil Site Plan - Sheet 28	10/15/18	A	12/19/18	B	02/22/19	C	04/17/19	D						
MHS-C-111-29	Civil Site Plan - Sheet 29	10/15/18	A	12/19/18	B	02/22/19	C	04/17/19	D						
MHS-C-111-30	Civil Site Plan - Sheet 30	10/15/18	A	12/19/18	B	02/22/19	C	04/17/19	D	04/30/19	E				
MHS-C-111-31	Civil Site Plan - Sheet 31	10/15/18	A	12/19/18	B	02/22/19	C	04/17/19	D						
MHS-C-111-32	Civil Site Plan - Sheet 32	10/15/18	A	12/19/18	B	02/22/19	C	04/17/19	D						
MHS-C-111-33	Civil Site Plan - Substation Grading & Erosion Control	10/15/18	A	12/19/18	B	02/22/19	C	04/17/19	D						
MHS-C-111-34	Civil Site Plan - O&M Building	10/15/18	A	12/19/18	B	02/22/19	C	04/17/19	D						
MHS-C-111-35	Civil Site Plan - Laydown Area	10/15/18	A	12/19/18	B	02/22/19	C	04/17/19	D						
MHS-C-112-01	Access Road 101 - Plan & Profile	10/15/18	A	12/19/18	B	02/22/19	C	04/17/19	D						
MHS-C-112-02	Access Road 102, 104 & 105 - Plan & Profiles	10/15/18	A	12/19/18	B	02/22/19	C	04/17/19	D						
MHS-C-112-03	Access Road 103 - Plan & Profile	10/15/18	A	12/19/18	B	02/22/19	C	04/17/19	D						
MHS-C-112-04	Access Road 106 - Plan & Profile	10/15/18	A	12/19/18	B	02/22/19	C	04/17/19	D						
MHS-C-112-05	Access Road 107, 108 & 109 - Plan & Profiles	10/15/18	A	12/19/18	B	02/22/19	C	04/17/19	D						
MHS-C-112-06	Access Road 110 - Plan & Profile (Sheet 1 of 2)	10/15/18	A	12/19/18	B	02/22/19	C	04/17/19	D						
MHS-C-112-07	Access Road 110 - Plan & Profile (Sheet 2 of 2)	10/15/18	A	12/19/18	B	02/22/19	C	04/17/19	D						
MHS-C-112-08	Access Road 111 - Plan & Profile	10/15/18	A	12/19/18	B	02/22/19	C	04/17/19	D						
MHS-C-112-09	Access Road 112, 115 & 118 - Plan & Profiles	10/15/18	A	12/19/18	B	02/22/19	C	04/17/19	D						
MHS-C-112-10	Access Road 113 - Plan & Profile	10/15/18	A	12/19/18	B	02/22/19	C	04/17/19	D						
MHS-C-112-11	Access Road 114 - Plan & Profile	10/15/18	A	12/19/18	B	02/22/19	C	04/17/19	D						
MHS-C-112-12	Access Road 116 - Plan & Profile (Sheet 1 of 2)	10/15/18	A	12/19/18	B	02/22/19	C	04/17/19	D						
MHS-C-112-13	Access Road 116 - Plan & Profile (Sheet 2 of 2)	10/15/18	A	12/19/18	B	02/22/19	C	04/17/19	D						
MHS-C-112-14	Access Road 117 - Plan & Profile	10/15/18	A	12/19/18	B	02/22/19	C	04/17/19	D						
MHS-C-112-15	Access Road 119 & 120 - Plan & Profiles	10/15/18	A	12/19/18	B	02/22/19	C	04/17/19	D	04/30/19	E				
MHS-C-112-16	Access Road 121 & 122 - Plan & Profiles	10/15/18	A	12/19/18	B	02/22/19	C	04/17/19	D						
MHS-C-112-17	Access Road 123 - Plan & Profile	10/15/18	A	12/19/18	B	02/22/19	C	04/17/19	D						

PREPARED FOR: AVANGRID RENEWABLES, LLC
PREPARED BY : MOTT MACDONALD NY, LLC
ISSUE DATE : MAY 28, 2019
ISSUE STATUS : FOR PERMITTING ONLY

PROJECT DATA :
LOCATION : MONTGOMERY COUNTY, NY.
PROJECTION : STATE PLANE NAD 83 3101
NEW YORK EAST, US SURVEY FOOT



CONCEPTUAL - NOT FOR CONSTRUCTION

NO.					REVISIONS					DATE					BY					CHK					APR					NO.					REVISIONS					DATE					BY					CHK					APR																														ENGINEERING RECORD					DATE					MOHAWK SOLAR FARM MONTGOMERY COUNTY, NY CIVIL COVER SHEET																																																																																																																																																																																																																																																																																																																																																																																																																																																																																																																																																																																																																																																																																																																																																																																																																																																																																																																																																																																																																																																																																																																																																																																																																																																																																																																																																																																																																																																																																																																																																																																																																																																																																																																																																																																																																																																																																																																																																																																																																																																																																																																																																																																																																																																																																																																																																																																																																																																																																																																																																																																																																																																																																																																																																																																																																																																																																																																																																																																																																																																																																																																																																										

DRAWING LIST

C-101-01: CIVIL COVER SHEET
C-101-02: CIVIL DRAWING LIST AND GENERAL NOTES SHEET
C-101-03: OVERALL SITE AREA INDEX
C-101-04: SOILS MAP INDEX

CIVIL SITE DETAILS:

C-110-01: CIVIL SITE DETAILS (SHEET 1 of 4)
C-110-02: CIVIL SITE DETAILS (SHEET 2 of 4)
C-110-03: CIVIL SITE DETAILS (SHEET 3 of 4)
C-110-04: CIVIL SITE DETAILS (SHEET 4 of 4)

SITE AREA GRADING & EROSION CONTROL:

C-111-01: GRADING & EROSION CONTROL PLAN-SITE 1
C-111-02: GRADING & EROSION CONTROL PLAN-SITE 2
C-111-03: GRADING & EROSION CONTROL PLAN-SITE 3
C-111-04: GRADING & EROSION CONTROL PLAN-SITE 4
C-111-05: GRADING & EROSION CONTROL PLAN-SITE 5
C-111-06: GRADING & EROSION CONTROL PLAN-SITE 6
C-111-07: GRADING & EROSION CONTROL PLAN-SITE 7
C-111-08: GRADING & EROSION CONTROL PLAN-SITE 8
C-111-09: GRADING & EROSION CONTROL PLAN-SITE 9
C-111-10: GRADING & EROSION CONTROL PLAN-SITE 10
C-111-11: GRADING & EROSION CONTROL PLAN-SITE 11
C-111-12: GRADING & EROSION CONTROL PLAN-SITE 12
C-111-13: GRADING & EROSION CONTROL PLAN-SITE 13
C-111-14: GRADING & EROSION CONTROL PLAN-SITE 14
C-111-15: GRADING & EROSION CONTROL PLAN-SITE 15
C-111-16: GRADING & EROSION CONTROL PLAN-SITE 16
C-111-17: GRADING & EROSION CONTROL PLAN-SITE 17
C-111-18: GRADING & EROSION CONTROL PLAN-SITE 18
C-111-19: GRADING & EROSION CONTROL PLAN-SITE 19
C-111-20: GRADING & EROSION CONTROL PLAN-SITE 20
C-111-21: GRADING & EROSION CONTROL PLAN-SITE 21
C-111-22: GRADING & EROSION CONTROL PLAN-SITE 22
C-111-23: GRADING & EROSION CONTROL PLAN-SITE 23
C-111-24: GRADING & EROSION CONTROL PLAN-SITE 24
C-111-25: GRADING & EROSION CONTROL PLAN-SITE 25
C-111-26: GRADING & EROSION CONTROL PLAN-SITE 26
C-111-27: GRADING & EROSION CONTROL PLAN-SITE 27
C-111-28: GRADING & EROSION CONTROL PLAN-SITE 28
C-111-29: GRADING & EROSION CONTROL PLAN-SITE 29
C-111-30: GRADING & EROSION CONTROL PLAN-SITE 30
C-111-31: GRADING & EROSION CONTROL PLAN-SITE 31
C-111-32: GRADING & EROSION CONTROL PLAN-SITE 32
C-111-33 CIVIL SITE PLAN – SUBSTATION GRADING & EROSION CONTROL
C-111-34 CIVIL SITE PLAN – O&M BUILDING
C-111-35 CIVIL SITE PLAN – LAYDOWN AREA

ACCESS ROADS:

C-112-01: ACCESS ROAD 101-PLAN & PROFILE
C-112-02: ACCESS ROAD 102, 104 & 105-PLAN & PROFILES
C-112-03: ACCESS ROAD 103-PLAN & PROFILE
C-112-04: ACCESS ROAD 106-PLAN & PROFILE
C-112-05: ACCESS ROAD 107, 108 & 109-PLAN & PROFILES
C-112-06: ACCESS ROAD 110-PLAN & PROFILE (SHEET 1 of 2)
C-112-07: ACCESS ROAD 110-PLAN & PROFILE (SHEET 2 of 2)
C-112-08: ACCESS ROAD 111-PLAN & PROFILE
C-112-09: ACCESS ROAD 112, 115 & 118-PLAN & PROFILES
C-112-10: ACCESS ROAD 113-PLAN & PROFILE
C-112-11: ACCESS ROAD 114-PLAN & PROFILE
C-112-12: ACCESS ROAD 116-PLAN & PROFILE (SHEET 1 of 2)
C-112-13: ACCESS ROAD 116-PLAN & PROFILE (SHEET 2 of 2)
C-112-14: ACCESS ROAD 117-PLAN & PROFILE
C-112-15: ACCESS ROAD 119 & 120-PLAN & PROFILES
C-112-16: ACCESS ROAD 121 & 122-PLAN & PROFILES
C-112-17: ACCESS ROAD 123-PLAN & PROFILE

PRELIMINARY CONTRACTOR NOTES:

- ANY UNDERGROUND UTILITY LOCATIONS SHOWN ON DRAWINGS ARE APPROXIMATE. THE BALANCE OF PLANT (BOP) CONTRACTOR WILL TAKE ALL PRECAUTIONS NECESSARY TO PROTECT EXITING UTILITIES, PAVEMENTS, AND MONUMENTS EITHER SHOWN OR NOT SHOWN ON THESE DRAWINGS,
- THE PROPOSED FACILITY COMPONENTS DEPICTED ON THE FINAL CONSTRUCTION DRAWINGS WILL BE DELINEATED IN THE FIELD BY EITHER LATH MARKERS, SURVEYORS RIBBON, PIN FLAGS, OR SUITABLE EQUIVALENT.
- THE BOUNDARIES OF ALL STREAMS, WETLANDS, AND WETLAND ADJACENT AREAS AS DEPICTED ON THE FINAL CONSTRUCTION DRAWINGS WILL BE MARKED IN THE FIELD BY EITHER LATH MARKERS, SURVEYORS RIBBON, PIN FLAGS, OR SUITABLE EQUIVALENT PRIOR TO CONSTRUCTION BY THE BOP CONTRACTOR.
- THE BOUNDARIES OF ALL AREAS OF TREES TO BE CLEARED AS DEPICTED ON THE FINAL CONSTRUCTION DRAWINGS WILL BE MARKED IN THE FIELD BY EITHER LATH MARKERS, SURVEYORS RIBBON, PIN FLAGS, OR SUITABLE EQUIVALENT PRIOR TO CONSTRUCTION BY THE BOP CONTRACTOR.
- THE BOP CONTRACTOR WILL NOTE THE CONDITION OF ANY EXISTING FENCE THAT MAY BE IMPACTED BY PROJECT CONSTRUCTION. FENCES THAT MUST BE REMOVED AND/OR CUT WILL HAVE A TEMPORARY GATE INSTALLED IF NEEDED BASED ON LANDOWNER DISCUSSION. UPON COMPLETION OF CONSTRUCTION, THE FENCE WILL BE REBUILT, AT A MINIMUM TO ITS PRECONSTRUCTION CONDITION.
- ANY DISRUPTION TO DEC REGULATED WETLANDS WILL BE MINIMIZED. DEC’S FIELD REPRESENTATIVE WILL NOTIFY THE DPS STAFF REPRESENTATIVE AND THE APPLICANT’S REPRESENTATIVE OF ANY ACTIVITIES THAT VIOLATE OR MAY VIOLATE EITHER THE TERMS OF THE CERTIFICATE OR THE ENVIRONMENTAL CONSERVATION LAW. DPS AND DEC STAFFS’ FIELD REPRESENTATIVES WILL WORK COOPERATIVELY TO DETERMINE WHETHER STOP WORK AUTHORITY WILL BE EXERCISED, OR WHETHER TO DIRECT THE APPLICANT TO TAKE ACTION TO FURTHER MINIMIZE IMPACTS TO STREAMS AND WETLANDS.
- RESTRICTED ACTIVITIES PERTAIN TO A BUFFER ZONE OF 100 FEET ON EITHER SIDE OF THE BOUNDARIES OF WATER-RELATED RESOURCES (STREAMS, WETLANDS, SPRINGS, WELLS, DRAINAGE, ETC.) AND INCLUDE THE FOLLOWING RESTRICTIONS:

A. NO DEPOSITION OF SLASH WITHIN IDENTIFIABLE STREAM CHANNELS OR WOOD CHIPS WITHIN 25 FEET OF WETLANDS;

B. NO UNNECESSARY REMOVAL OF WOOD VEGETATION OR DEGRADATION OF STREAM BANKS;

C. NO EQUIPMENT WASHING OR REFUELING EXCEPT AS SPECIFIED IN THE FINAL CONSTRUCTION DRAWINGS;

D. AND NO STORAGE MIXING OR HANDLING OF ANY PETROLEUM OR CHEMICAL MATERIALS IN OPEN CONTAINERS.
- "AVOID, DO NOT CROSS" INDICATES THAT AN AREA DOES NOT HAVE A DESIGNATED ACCESS ROUTE AND THAT EQUIPMENT IS RESTRICTED FROM CROSSING OR OPERATING IN THAT AREA. THIS DESIGNATION IS APPLIED TO ALL WETLANDS, STREAMS, AND ASSOCIATED BUFFERS THAT DO NOT HAVE APPROVED EQUIPMENT ACCESS, AS DEPICTED ON THE FINAL CONSTRUCTION DRAWINGS
- CONTRACTOR TO UTILIZE SOLAR SITES AS TEMPORARY LAYDOWN AREAS DURING CONSTRUCTION.
- PARCEL LINES DEPICTED ON PLANS ARE APPROXIMATE AND ARE FOR CONCEPTUAL PURPOSES ONLY.

PRELIMINARY GENERAL ENVIRONMENTAL RESTRICTIONS:

- ALL EQUIPMENT ACCESS, STORAGE OF EQUIPMENT AND MATERIALS, AND OTHER CONSTRUCTION ACTIVITIES WILL BE CONFINED TO THE ACCESS ROADS, SOLAR SITES, SUBSTATIONS, AND THE COLLECTION LINE AND TRANSMISSION LINE ROUTES AS DEPICTED ON THE FINAL CONSTRUCTION DRAWINGS.
- EQUIPMENT WILL UTILIZE THE INTERSECTION OF ACCESS ROADS AND EXISTING ROADS FOR TURNING. WORK AREAS, SUCH AS SOLAR SITES AND SUBATATION AREAS, WILL ALSO PROVIDE AREAS FOR EQUIPMENT TURNING AND PARKING, IN ADDITION TO DESIGNATED TURNING LOCATIONS.
- FUGITIVE DUST RESULTING FROM CONSTRUCTION ACTIVITIES WILL BE MINIMIZED TO THE MAXIMUM EXTENT PRACTICAL BY IMPLEMENTING APPROPRIATE CONTROL MEASURES. THESE MEASURES INCLUDE THE APPLICATION OF MULCH, WATER, OR STONE ON ACCESS ROADS, EXPOSED SOILS, STOCKPILED SOILS, OR UNPAVED PUBLIC ROADS WHEN DRY AND WINDY CONDITIONS EXIST. A WATERING VEHICLE (OR A VEHICLE CONTAINING AN APPROVED CHEMICAL TREATMENT) WILL BE AVAILABLE ON AN AS-NEEDED BASIS.
- BOP CONTRACTOR MUST MAINTAIN ALL EQUIPMENT IN GOOD OPERATING CONDITIONS AND ALL MOTORS AND ENGINES WILL BE MUFFLED ACCORDING TO MANUFACTURER’S SPECIFICATIONS AND WILL COMPLY WITH STATE ENVIRONMENTAL LAW, SUBCHAPTER E, PART 450 (NOISE FROM HEAVY MOTOR VEHICLES). ANY FAULTY NOISE SUPPRESSOR WILL BE REPAIRED OR REPLACED, EQUIPMENT WILL NOT BE LEFT RUNNING UNNECESSARILY, AND EXISTING TALL GROWING VEGETATION WILL BE MAINTAINED, TO THE MAXIMUM EXTENT PRACTICABLE, TO SERVE AS A NOISE BUFFER.
- CONSTRUCTION ACTIVITY WILL GENERALLY OCCUR BETWEEN THE HOURS OF 6:00 A.M. AND 6:00 P.M. MONDAY THROUGH SATURDAY, AND 6AM TO 6PM ON SUNDAY. HOWEVER, DUE TO SAFETY OR CONTINUOUS OPERATION REQUIREMENTS, CONSTRUCTION ACTIVITIES MAY OCCUR OUTSIDE OF THESE TIMEFRAMES AND ADDITIONAL WORK HOURS MAY BE NECESSARY.
- WITHIN 100 FEET OF STATE REGULATED WETLANDS AND 50 FEET OF OTHER WATER BODIES, REMOVE ONLY THE MINIMUM VEGETATION NECESSARY TO ALLOW FOR CONSTRUCTION AND OPERATION OF THE FACILITY.
- STREAMS AND WETLANDS WILL BE PROTECTED FROM INDIRECT IMPACTS DURING CONSTRUCTION BY UTILIZING VARIOUS EROSION AND SEDIMENT CONTROL MEASURES IN ACCORDANCE WITH APPROVED PROJECT STORMWATER POLLUTION PREVENTION PLAN (SWPPP). SUCH MEASURES WILL INCLUDE, BUT NOT BE LIMITED TO, SILT FENCES PLACED BETWEEN WATER RESOURCE BOUNDARIES AND CONSTRUCTION AREAS. EXPOSED SOIL WILL BE SEEDED AND/OR MULCHED, AS SOON AS PRACTICABLE, BUT IN ANY EVENT, NO LATER THAN SEVEN DAYS IN WHICH SITE DISTURBANCE OCCURS, TO ASSURE THAT EROSION AND SILTATION IS KEPT TO A MINIMUM ALONG STREAM AND WETLAND BOUNDARIES.
- TEMPORARY EROSION CONTROL DEVICES AND STABILIZATION PRACTICES WILL BE INSTALLED SOON AS PRACTICABLE AND APPROPRIATE, IN ACCORDANCE WITH THE SWPPP. EROSION CONTROL DEVICES WILL BE INSTALLED AFTER CLEARING, BUT PRIOR TO SOIL DISTURBANCE.
- IN THE EVENT THAT ARCHAEOLOGICAL MATERIALS, HUMAN REMAINS, OR EVIDENCE OF HUMAN BURIALS ARE ENCOUNTERED DURING CONSTRUCTION, ALL WORK IN THE VICINITY OF THE FIND WILL BE IMMEDIATELY HALTED AND THE "UNANTICIPATED DISCOVERY PLAN" WILL BE IMPLEMENTED.
- THE BOP CONTRACTOR WILL LOCATE AND DISTRIBUTE EXCESS EXCAVATION MATERIAL IN NON-AGRICULTURE UPLAND AREAS (I.E., OUTSIDE OF WETLANDS, STREAMS, AND AGRICULTURAL FIELDS). WHERE PRACTICAL, SUCH MATERIAL WILL BE USED AS ROAD FILL OR BACKFILL AROUND STRUCTURES. EROSION CONTROL PRACTICES WILL BE INSTALLED, AND EXPOSED SOILS STABILIZED IN ACCORDANCE WITH THE SWPPP.
- THE BOP CONTRACTOR WILL NOT LEAVE FUEL FIRED GENERATORS IDLING WHEN THEY ARE NOT IN ACTIVE USE.

PRELIMINARY SPECIFIC STREAM CROSSING RESTRICTIONS:

- CONSTRUCTION WORK IN STREAMS WILL CONFORM TO APPROPRIATE TIMING RESTRICTIONS TO PROTECT IMPORTANT FISHERIES RESOURCES, DURING SPAWNING AND PRIMARY MIGRATION PERIODS. STREAMS SUBJECT TO SUCH RESTRICTIONS WILL BE DETERMINED IN THE FIELD BY REPRESENTATIVES OF THE DEC AND THE APPLICANT, PRIOR TO CONSTRUCTION. FOR COLD WATER FISHERIES IN THE PROJECT AREA, CONSTRUCTION WORK IN STREAMS WILL BE PROHIBITED BETWEEN OCTOBER 1 AND MAY 31 TO AVOID TROUT SPAWNING PERIODS. FOR WARM WATER FISHERIES, CONSTRUCTION WORK IN STREAMS WILL BE PROHIBITED BETWEEN MARCH 1 AND JULY 15. HOWEVER, ONCE INSTALLED, SUCH CROSSINGS CAN BE USED BY CONSTRUCTION VEHICLES THROUGHOUT THE DURATION OF PROJECT CONSTRUCTION. ANY EXCEPTIONS TO THESE PROHIBITED PERIODS REQUIRE PRIOR APPROVAL BY DPS STAFF, IN CONSULTATION WITH DEC.

PRELIMINARY SPECIFIC WETLAND CROSSING RESTRICTIONS:

- ANY REQUIRED TEMPORARY ACCESS ROUTE WILL BE REMOVED FOLLOWING CONSTRUCTION.
- IN ALL CASES, THE PRE-DISTURBANCE FLOW REGIME MUST BE MAINTAINED.

- DURING EXCAVATION IN WETLANDS, TEMPORARY SPOIL STOCKPILES WILL BE PLACED ON CONSTRUCTION MATTING. FOLLOWING BACKFILL, ANY EXCESS SPOIL NOT USED AS STRUCTURE BACKFILL WILL BE DISPOSED OF AT AN UPLAND SITE AS APPROVED BY THE ENVIRONMENTAL INSPECTOR (NO BULL-DOZING, BACK-BLADING, OR OTHERWISE SPREADING OF EXCESS SPOIL OVER THE WETLAND SURFACE).
- EROSION CONTROL AND OTHER WETLAND PROTECTION MEASURES WILL BE IMPLEMENTED AS SPECIFIED IN THE SWPPP.
- BOP CONTRACTOR WILL INSTALL AND MAINTAIN SILT FENCING AND SEDIMENT BARRIERS WHEREVER EXCAVATION OR FILLING ACTIVITIES OCCUR ADJACENT TO OR WITHIN WETLAND AREAS AS INDICATED ON THE SWPPP DRAWINGS.

PRELIMINARY AGRICULTURAL LAND-RELATED RESTRICTIONS:

- AGRICULTURAL MITIGATION, RESTORATION, AND CLEAN UP MAY INCLUDE, BUT IS NOT LIMITED TO, THE FOLLOWING: USE OF CONSTRUCTION MATTING, TOPSOIL STRIPPING, REMOVAL OF ROCK 4 INCHES OR LARGER PLACED BY BOP CONTRACTOR, REPLACEMENT OF EXISTING TOPSOIL WITH MATERIALS WHICH WERE STRIPPED IN THE AREA AT THE START OF CONSTRUCTION, SURFACE AND SUBSURFACE SHATTERING, DEEP TILLAGE, REPAIR OF FUNCTIONING STONE DRAINAGE SYSTEMS, BROKEN TILE OR TILING SYSTEMS, AND INSTALLATION OF NEW INTERCEPT DRAINS.
- ACCESS ROUTES WILL BE CONSTRUCTED ONLY IN LOCATIONS SHOWN ON THE FINAL CONSTRUCTION DRAWINGS.
- ALL ACCESS ROUTES WILL BE THE MINIMUM WIDTH NECESSARY TO ACCOMMODATE CONSTRUCTION TRAFFIC.
- TO PREVENT DAMAGE TO ADJACENT AGRICULTURAL LAND, ALL VEHICLE TRAFFIC AND PARKING WILL BE CONFINED TO THE ACCESS ROADS AND DESIGNATED WORK AREAS AT THE SOLAR AND SUBSTATION FACILITY SITES. ANY NECESSARY PULL-OFFS AND PARKING AREAS WILL BE DEVELOPED OUTSIDE OF ACTIVE AGRICULTURAL FIELDS TO THE EXTENT PRACTICAL.
- IN REPAIRING ANY DAMAGED DRAINAGE LINES, KNITTED FILTER COVERING WILL GENERALLY NOT BE USED AROUND CORRUGATED PLASTIC TUBING (TO AVOID POTENTIAL SILT ACCUMULATION AND SEAL-OFF OF DRAINAGE LINES).
- IMMEDIATELY FOLLOWING CONSTRUCTION ACTIVITY, THE WORK AREAS WILL BE THOROUGHLY AND SAFELY CLEARED OF NUTS, BOLTS, SPIKES, WIRE, PIECES OF STEEL, AND OTHER ASSORTED ITEMS.
- THE FUNCTIONS SERVED BY ACTIVE FARM FENCES AND GATES AFFECTED BY THE CONSTRUCTION WILL BE TEMPORARILY SUSTAINED THROUGHOUT ALL PHASES OF CONSTRUCTION AND SUCH SEGMENTS OF AFFECTED FENCES AND GATES WILL BE REBUILT AT A MINIMUM TO IT PRE-CONSTRUCTION CONDITION OR AS AGREED TO WITH THE LANDOWNER.
- NO PIN FLAGS WILL BE USED IN AGRICULTURAL FIELDS.
- THE NEW YORK DEPARTMENT OF AGRICULTURE AND MARKETS (NYDAM) GUIDELINES FOR AGRICULTURE AND MITIGATION FOR SOLAR PV PROJECTS WILL BE FOLLOWED TO THE EXTENT PRACTICABLE. NYSDAM WILL BE CONSULTED WITH WHEN DEVIATIONS FROM THE GUIDELINES ARE NECESSARY.

PRELIMINARY EROSION & SEDIMENT CONTROL NOTES:

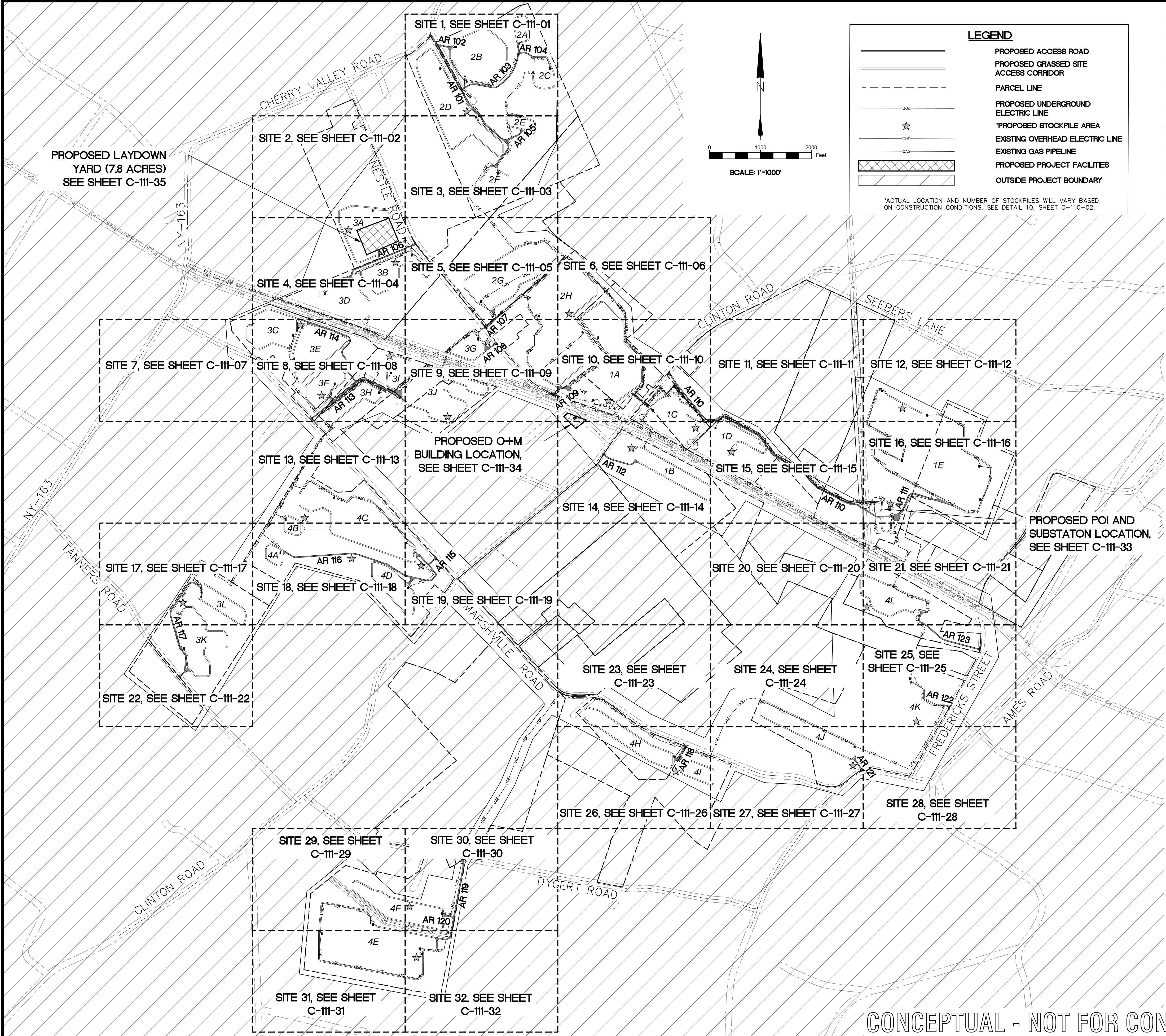
- REFER TO THE CONSTRUCTION SEQUENCE IN THE PRELIMINARY SWPPP.
- THE BOP CONTRACTOR WILL INSTALL EROSION AND SEDIMENT CONTROL PRACTICES AS SHOWN ON THE SWPPP , AS WARRANTED BY SITE CONDITIONS, AND THROUGHOUT ALL PHASES OF CONSTRUCTION.
- ALL EROSION AND SEDIMENT CONTROL PRACTICES SHALL BE CONSTRUCTED AND OPERATED IN ACCORDANCE WITH THEIR DESIGN. ANY NECESSARY REPAIRS SHALL BE MADE IMMEDIATELY TO ASSURE THE CONTINUED PERFORMANCE OF THEIR INTENDED FUNCTION THROUGHOUT THE CONSTRUCTION PROCESS.
- CONSTRUCTION ENTRANCES WILL BE INSTALLED FOR THE ACCESS ROUTES AT EACH JUNCTION WITH A PUBLIC ROAD, UNLESS OTHERWISE INDICATED ON THE FINAL CONSTRUCTION DRAWINGS.
- INSTALL SILT FENCE ON THE DOWNSTREAM SIDE OF ALL DISTURBED AREAS, AS NECESSARY.
- PLACE CHECK DAMS IN ALL SWALES/DITCHES, WHERE SPECIFIED IN THE FINAL CONSTRUCTION DRAWINGS, IN ACCORDANCE WITH THE 2005 NYS STANDARDS AND SPECIFICATIONS FOR EROSION AND SEDIMENT CONTROL.
- THE CONTRACTOR SHALL PLACE SOIL AND EXCESS EXCAVATED EARTH IN TEMPORARY STOCK PILE AREAS THAT DO NOT INTERFERE WITH CONSTRUCTION ACTIVITIES, AND STORMWATER RUNOFF, AND ARE NOT IN ENVIRONMENTALLY SENSITIVE AREAS. STOCK PILES SHALL BE STABILIZED PER THE DETAIL.
- ALL DISTURBED AREAS SHALL BE STABILIZED PER THE NYS STANDARDS FOR EROSION AND SEDIMENT CONTROL, AS NECESSARY BASED ON SITE CONDITIONS.
- AFTER CONSTRUCTION IS COMPLETE, THE CONTRACTOR SHALL ROUGH GRADE, RE-APPLY STOCKPILED TOPSOIL, FINE GRADE, SEED, AND MULCH ALL DISTURBED AREAS PLANNED FOR VEGETATIVE COVER.
- CONSTRUCTION WORK AREAS AND ACCESS ROUTES MAY BE IMPROVED, AS NECESSARY, TO ALLOW CONSTRUCTION ACCESS. ANY IMPROVEMENTS, UNLESS DEEMED PERMANENT, MUST BE REMOVED AT THE COMPLETION OF CONSTRUCTION AND THE AREA RESTORED TO PRE-CONSTRUCTION CONDITION.
- THE CONTRACTOR IS RESPONSIBLE FOR THE PLACEMENT, DESIGN, APPROVAL, AND OPERATION OF CONCRETE WASHOUTS. THE CONCRETE WASHOUTS SHALL BE INSTALLED A MINIMUM OF 50 FEET AWAY FROM STORM DRAINAGE, SURFACE WATER, OR OTHER SENSITIVE AREAS. CONCRETE WASTE MATERIAL SHALL NOT BE ALLOWED TO OVERFLOW OR OTHERWISE DISCHARGE FROM THE CONCRETE WASHOUT.
- THE CONTRACTOR SHALL PROVIDE HANDWASHING AND SANITARY FACILITIES, THESE FACILITIES SHALL BE SERVICED REGULARLY AND PROPERLY IN ACCORDANCE WITH LOCAL, STATE AND/OR FEDERAL REQUIREMENTS.

ARCHAEOLOGICAL SITES NOTE:

ARCHAEOLOGICAL SITES HAVE BEEN IDENTIFIED DURING THE PHASE 1B ARCHAEOLOGICAL SURVEY FOR THE MOHAWK SOLAR PROJECT. THE SITES RECOMMENDED FOR AVOIDANCE SHOULD BE AVOIDED BY ALL POTENTIALLY EARTH-DISTURBING ACTIVITIES RELATED TO THE CONSTRUCTION OF THE FACILITY. THE MAPPED LOCATIONS OF ALL ARCHAEOLOGICAL SITES RECOMMENDED FOR AVOIDANCE THAT OCCUR WITHIN 100 FEET (31 METERS) OF PROPOSED FACILITY-RELATED IMPACTS WILL BE IDENTIFIED AS "ENVIRONMENTALLY SENSITIVE AREAS" OR SIMILAR ON THE FINAL CONSTRUCTION DRAWINGS, AND MARKED IN THE FIELD BY CONSTRUCTION FENCING WITH SIGNS THAT RESTRICT ACCESS. THESE MEASURES SHOULD BE ADEQUATE TO ENSURE THAT IMPACTS TO ARCHAEOLOGICAL RESOURCES ARE AVOIDED.

CONCEPTUAL - NOT FOR CONSTRUCTION

NO.		REVISIONS				DATE	BY	CHK	APR	<div><div></div><div>AVANGRID RENEWABLES</div></div>	THIS DRAWING IS THE PROPERTY OF AVANGRID RENEWABLES AND IS LOANED UPON CONDITION THAT IT IS NOT TO BE COPIED OR REPRODUCED, IN WHOLE OR IN PART, OR USED FOR FURNISHING INFORMATION TO ANY PERSON WITHOUT THE WRITTEN CONSENT OF AVANGRID RENEWABLES, OR FOR ANY PURPOSE DETRIMENTAL TO THEIR INTEREST, AND IS TO BE RETURNED UPON REQUEST.	ENGINEERING RECORD	DATE	MOHAWK SOLAR PROJECT CIVIL DRAWING LIST AND GENERAL NOTES SHEET				
													DRAWN: M. UELMEN					4/17/19
													DESIGNED: M. UELMEN					4/17/19
													CHECKED: K. WOOD					4/17/19
													APPROVED: J. HICKS					4/17/19
													CADFILE: MHS-C-101-02					
													SCALE: N/A	DWG.NO. MHS-C-101-02	SHEET 1 OF 1	REV D		



ITEM	LENGTH (TOTAL)
ACCESS ROADS	5.98 MILES
SITE ACCESS DRIVES	23.7 MILES

ACCESS ROAD TABLE					
ACCESS ROAD NO.	SHEET NO.	SITE NO.	CUT VOLUME (CY)	FILL VOLUME (CY)	LENGTH (MI)
101	C-112-01	1, 3	1775	1773	0.60
102	C-112-02	1	65	58	0.05
103	C-112-03	1	4050	3965	0.34
104	C-112-02	1	134	128	0.06
105	C-112-02	2	422	425	0.08
106	C-112-04	4, 5	817	813	0.29
107	C-112-05	5, 9	490	520	0.09
108	C-112-05	9	81	83	0.05
109	C-112-05	9, 10	392	390	0.07
110	C-112-06, C-112-07	10, 11, 15, 16	3512	3507	1.06
111	C-112-08	16	1678	1681	0.26
112	C-112-09	14	666	662	0.14
113	C-112-10	8	964	972	0.42
114	C-112-11	4, 8	1487	1472	0.40
115	C-112-09	19	17	22	0.04
116	C-112-12, C-112-13	18, 19	1634	1623	0.72
117	C-112-14	17, 22	1840	1846	0.43
118	C-112-09	26	301	398	0.08
119	C-112-15	30, 32	1084	1069	0.35
120	C-112-15	30	76	70	0.04
121	C-112-16	27, 28	160	164	0.06
122	C-112-17	25	44	42	0.05
123	C-112-16	21, 25	876	854	0.30
TOTAL			22565	22537	5.98

SOLAR SITE EARTHWORK QUANTITIES TABLE		
ID	CUT VOLUME (CY)	FILL VOLUME (CY)
1A	632	631
1B	115	117
1C	139	136
1D	182	180
1E	2888	2887
2A	45	44
2B	385	391
2C	196	200
2D	478	472
2E	102	99
2F	76	75
2G	422	424
2H	834	827
3A	331	334
3B	331	328
3C	104	101
3D	1283	1285
3E	341	340
3F	119	122
3G	134	131
3H	229	232
3I	42	43
3J	1784	1781
3K	378	382
3L	140	143
4A	104	109
4B	65	61
4C	252	248
4D	194	196
4E	348	350
4F	334	330
4H	243	240
4I	44	45
4J	3753	3755
4K	58	55
4L	630	635
O&M BUILDING	345	335
SUBSTATION	24700	24094
TOTAL (W/O SUBSTATION)	18080	18064
TOTAL	42780	42158

CONCEPTUAL - NOT FOR CONSTRUCTION

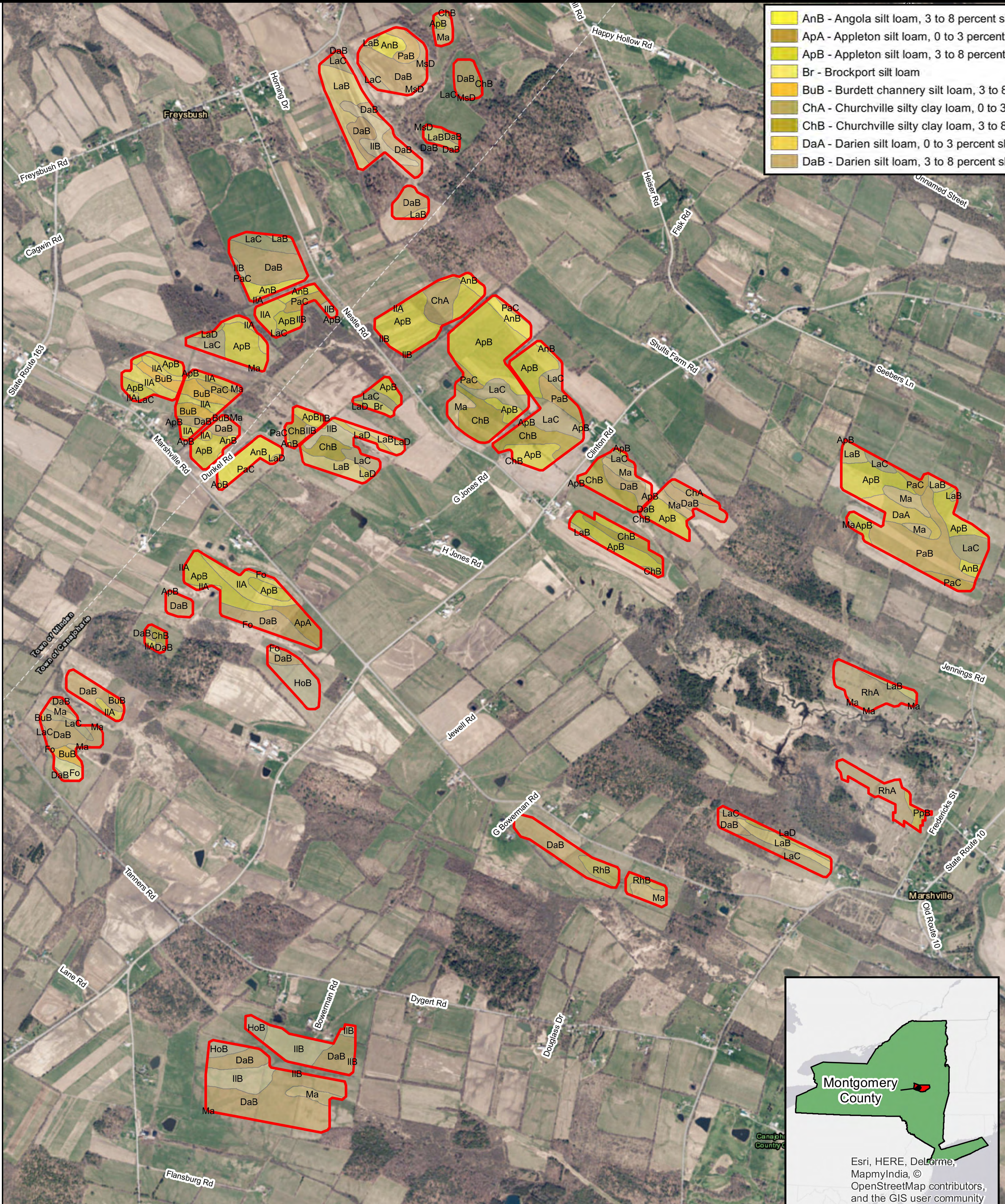
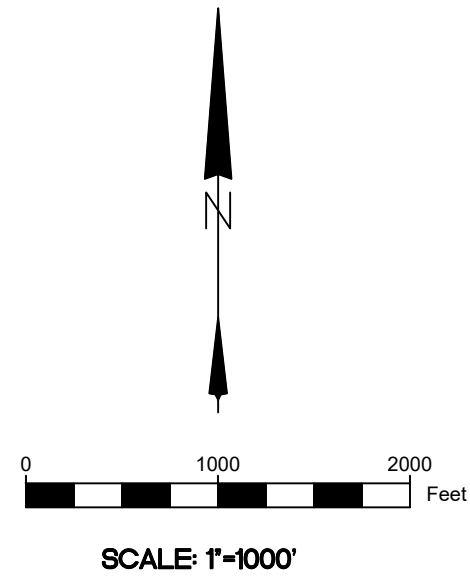
NO.	REVISIONS	DATE	BY	CHK	APR	NO.	REVISIONS	DATE	BY	CHK	APR
	A	10/15/18	MU	KW	JH		A	10/15/18	MU	KW	JH
	B	12/19/18	MU	KW	JH		B	12/19/18	MU	KW	JH
	C	2/22/19	MU	KW	JH		C	2/22/19	MU	KW	JH
	D	4/17/19	MU	KW	JH		D	4/17/19	MU	KW	JH
	E	4/30/19	MU	KW	JH		E	4/30/19	MU	KW	JH



THIS DRAWING IS THE PROPERTY OF AVANGRID RENEWABLES AND IS LOANED UPON CONDITION THAT IT IS NOT TO BE COPIED OR REPRODUCED, IN WHOLE OR IN PART, OR USED FOR FURNISHING INFORMATION TO ANY PERSON WITHOUT THE WRITTEN CONSENT OF AVANGRID RENEWABLES, OR FOR ANY PURPOSE DETRIMENTAL TO THEIR INTEREST, AND IS TO BE RETURNED UPON REQUEST.

ENGINEERING RECORD	DATE
DRAWN: M. UELMEN	4/30/19
DESIGNED: M. UELMEN	4/30/19
CHECKED: K. WOOD	4/30/19
APPROVED: J. HICKS	4/30/19
CADFILE: MHS-C-101-03	

MOHAWK SOLAR PROJECT
GRADING AND EROSION CONTROL
SITE AREA INDEX SHEET



AnB - Angola silt loam, 3 to 8 percent slopes	FL - Fluvaquents, loamy	Ma - Madalin silty clay loam, 0 to 3 percent slopes
ApA - Appleton silt loam, 0 to 3 percent slopes	Fo - Fonda mucky silty clay loam	MsD - Mohawk silt loam, 15 to 25 percent slopes
ApB - Appleton silt loam, 3 to 8 percent slopes	HoB - Hornell silt loam, 3 to 8 percent slopes	PaB - Palatine silt loam, 3 to 8 percent slopes
Br - Brockport silt loam	IIA - Ilion silt loam, 0 to 3 percent slopes	PaC - Palatine silt loam, 8 to 15 percent slopes
BuB - Burdett channery silt loam, 3 to 8 percent slopes	IIB - Ilion silt loam, 3 to 8 percent slopes	PaD - Palatine silt loam, 15 to 25 percent slopes
ChA - Churchville silty clay loam, 0 to 3 percent slopes	LMF - Lansing and Mohawk soils, 25 to 60 percent slopes	PpB - Phelps gravelly loam, 3 to 8 percent slopes
ChB - Churchville silty clay loam, 3 to 8 percent slopes	LaB - Lansing silt loam, 3 to 8 percent slopes	RhA - Rhinebeck silty clay loam, 0 to 3 percent slopes
DaA - Darien silt loam, 0 to 3 percent slopes	LaC - Lansing silt loam, 8 to 15 percent slopes	RhB - Rhinebeck silty clay loam, 3 to 8 percent slopes
DaB - Darien silt loam, 3 to 8 percent slopes	LaD - Lansing silt loam, 15 to 25 percent slopes	

CONCEPTUAL - NOT FOR CONSTRUCTION

NO.	REVISIONS	DATE	BY	CHK	APR

NO.	REVISIONS	DATE	BY	CHK	APR
A	ISSUE FOR REVIEW	12/19/18	MU	KW	JH
B	ISSUE FOR REVIEW	2/22/19	MU	KW	JH
C	ISSUE FOR REVIEW	4/17/19	MU	KW	JH



THIS DRAWING IS THE PROPERTY OF AVANGRID RENEWABLES AND IS LOANED UPON CONDITION THAT IT IS NOT TO BE COPIED OR REPRODUCED, IN WHOLE OR IN PART, OR USED FOR FURNISHING INFORMATION TO ANY PERSON WITHOUT THE WRITTEN CONSENT OF AVANGRID RENEWABLES, OR FOR ANY PURPOSE DETRIMENTAL TO THEIR INTEREST, AND IS TO BE RETURNED UPON REQUEST.

ENGINEERING RECORD	DATE
DRAWN: M. UELMEN	4/17/19
DESIGNED: M. UELMEN	4/17/19
CHECKED: K. WOOD	4/17/19
APPROVED: J. HICKS	4/17/19
CADFILE: MHS-C-101-04	

MOHAWK SOLAR PROJECT SOILS MAP INDEX			
SCALE: 1"=1000'-0"	DWG.NO. MHS-C-101-04	SHEET 1 OF 1	REV C