



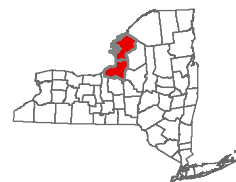
Mad River Wind Farm

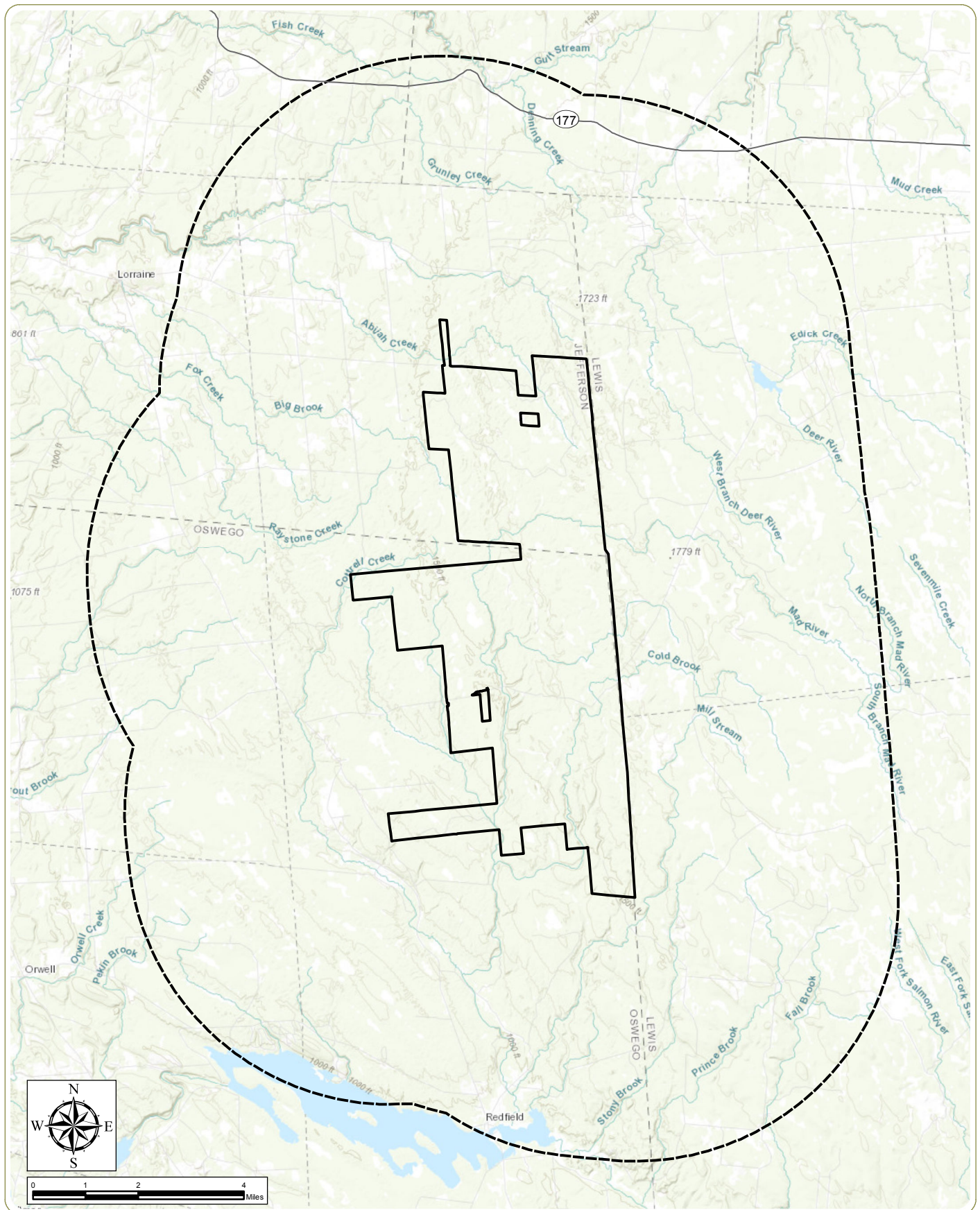
Town of Redfield, Oswego County and
Town of Worth, Jefferson County, New York

Figure 1. Regional Facility Location

- Notes: 1. Basemap: ESRI ArcGIS Online "World Topographic Map" map service.
2. This map was generated in ArcMap on December 21, 2017.
3. This is a color graphic. Reproduction in grayscale may misrepresent the data.

- Facility Area
 County Boundary



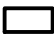



Mad River Wind Farm

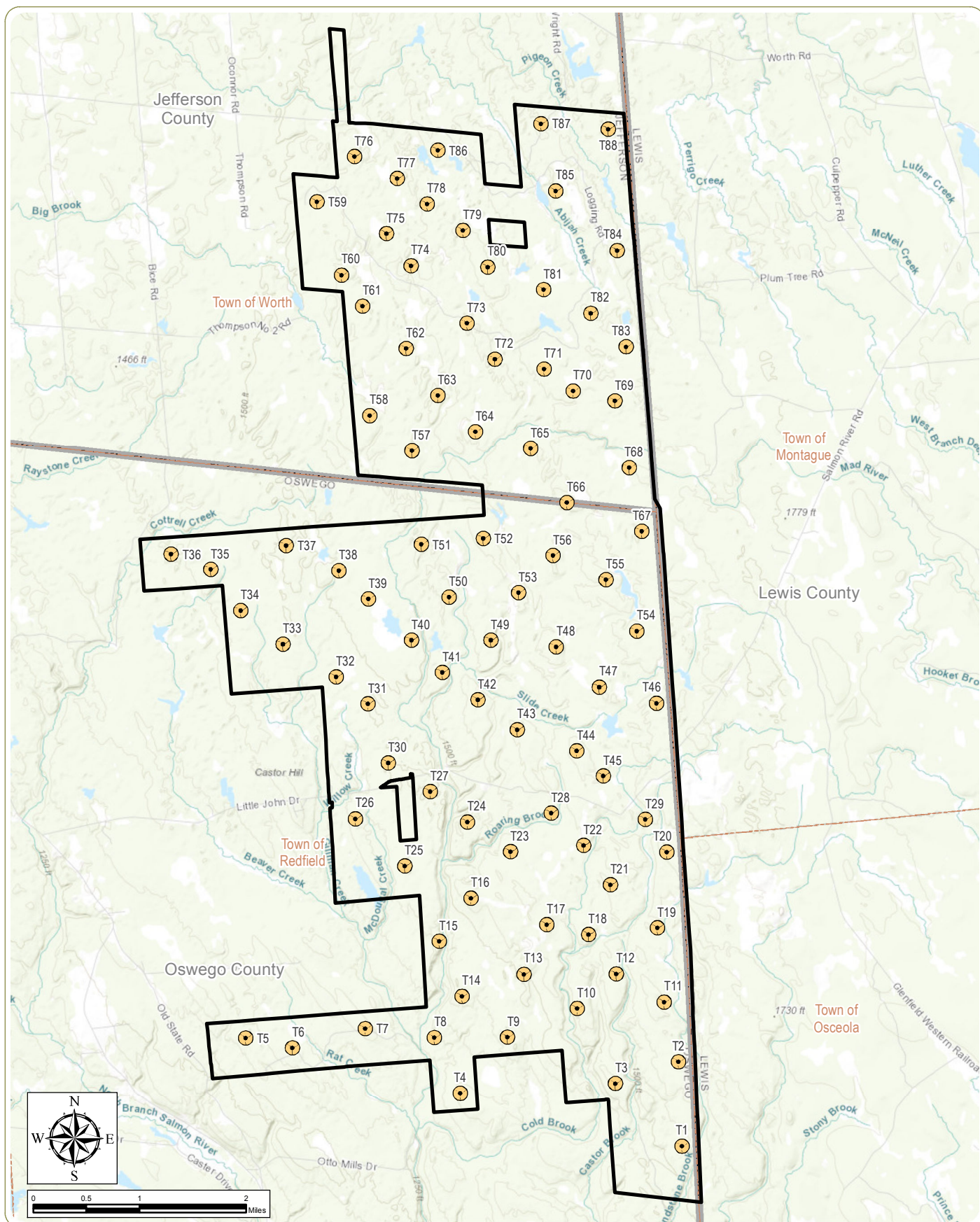
Town of Redfield, Oswego County and
Town of Worth, Jefferson County, New York

Figure 2. Facility Area and 5-Mile Study Area

- Notes: 1. Basemap: ESRI ArcGIS Online "World Topographic Map" map service.
2. This map was generated in ArcMap on December 15, 2017.
3. This is a color graphic. Reproduction in grayscale may misrepresent the data.

-  Facility Area
 5-Mile Study Area









Mad River Wind Farm

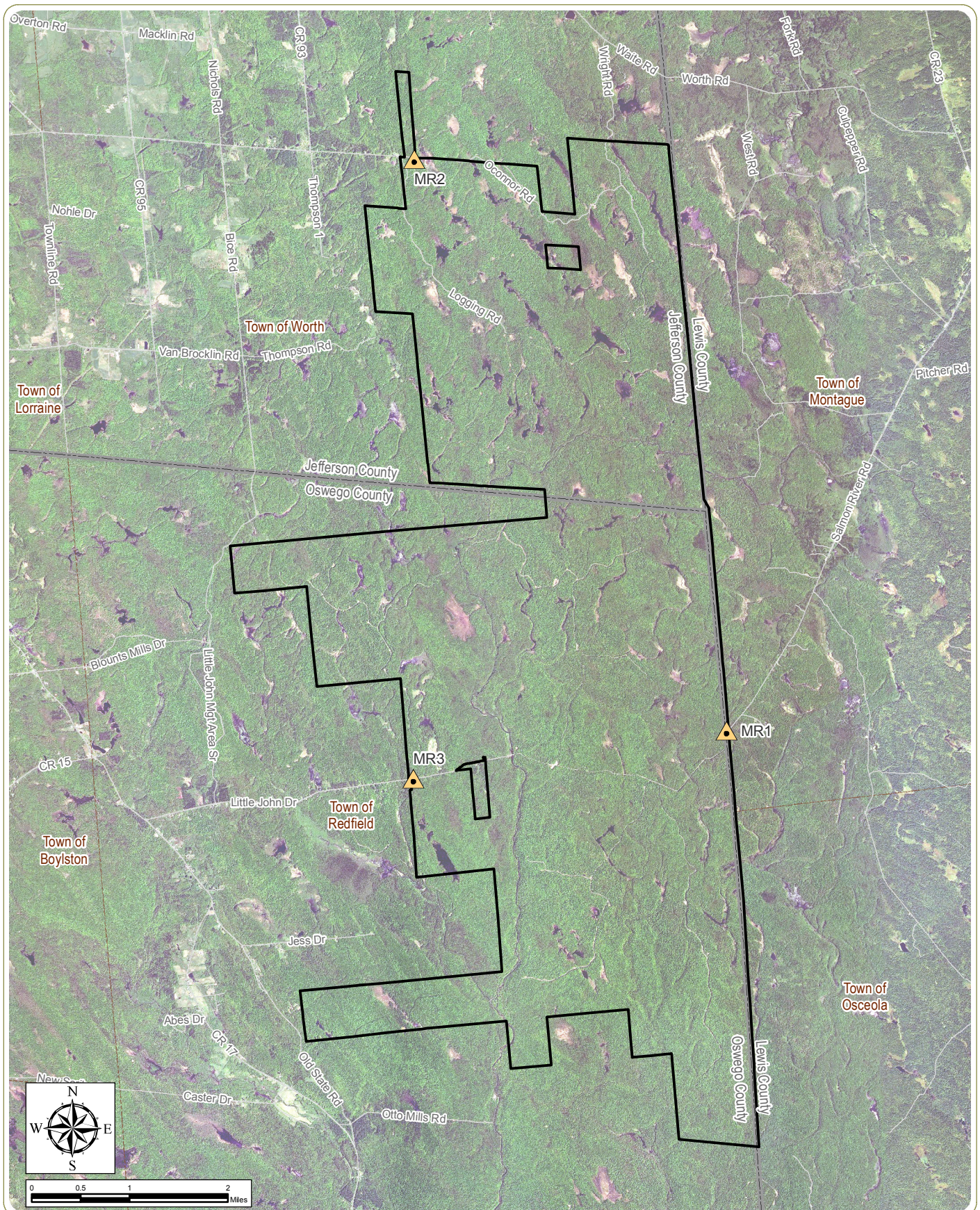
Town of Redfield, Oswego County and
Town of Worth, Jefferson County, New York

Figure 3. Preliminary Layout of Turbine Locations

- Notes:**
1. Basemap: ESRI ArcGIS Online "World Topographic Map" map service.
 2. This map was generated in ArcMap on December 21, 2017.
 3. This is a color graphic. Reproduction in grayscale may misrepresent the data.

-  Wind Turbine
-  Facility Area
-  Town Boundary
-  County Boundary









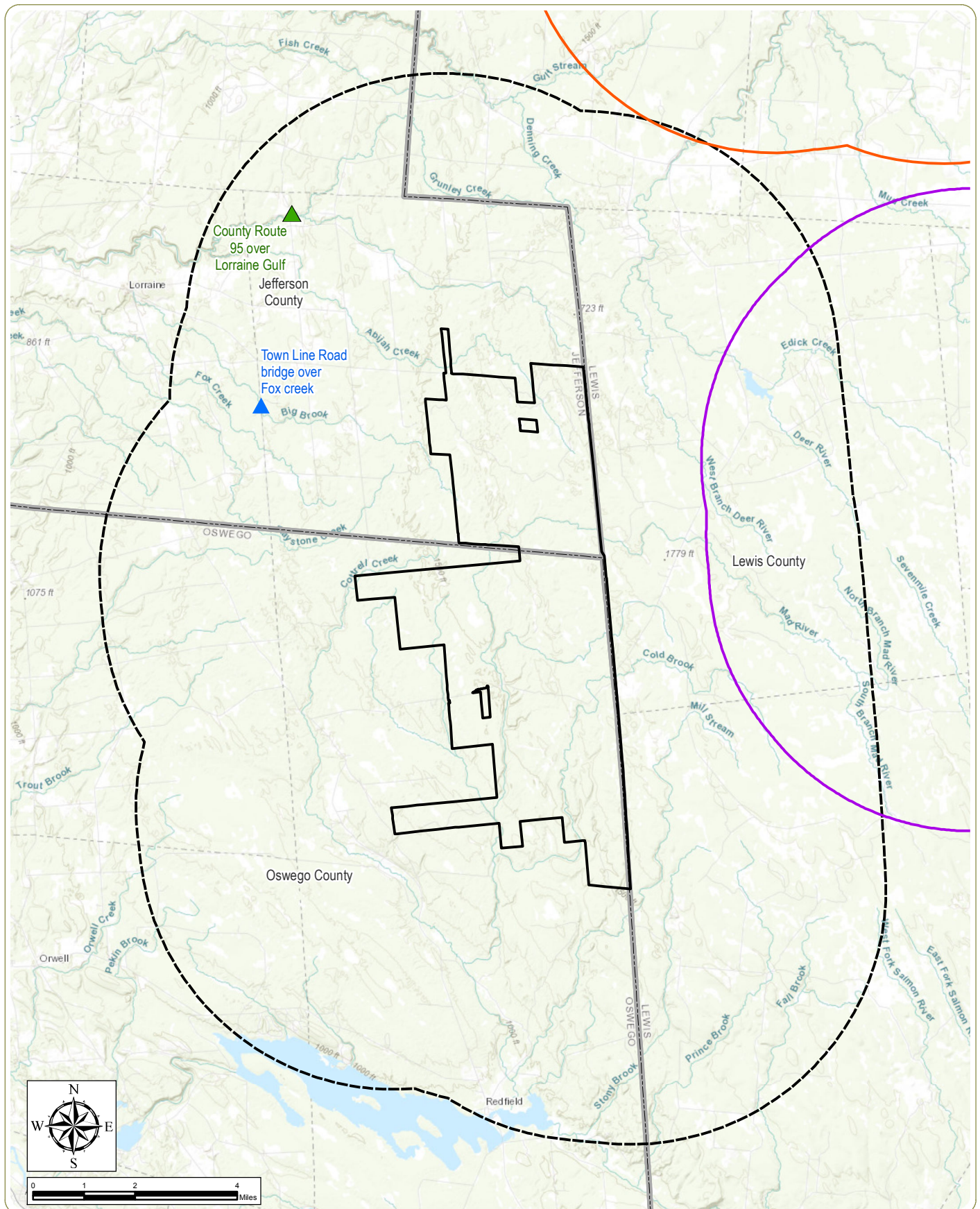
Mad River Wind Farm

Town of Redfield, Oswego County and
Town of Worth, Jefferson County, New York

Figure 4. Sound Monitoring Locations

- Notes:**
1. Basemap: USDA NAIP "2015 New York 0.5m" orthoimagery map service.
 2. This map was generated in ArcMap on December 21, 2017.
 3. This is a color graphic. Reproduction in grayscale may misrepresent the data.
 4. Locations were georeferenced from Epsilon. Locations should be interpreted as approximations.

-  Sound Monitoring Location
-  Facility Area
-  Town Boundary
-  County Boundary



Mad River Wind Farm

Town of Redfield, Oswego County and
Town of Worth, Jefferson County, New York

Figure 5. Previously Identified Historic Architectural Resources

Notes: 1. Basemap: ESRI ArcGIS Online "World Topographic Map" map service.

2. This map was generated in ArcMap on December 21, 2017.

3. This is a color graphic. Reproduction in grayscale may misrepresent the data.

▲ NRHP Eligibility Undetermined

▲ NRHP-Eligible Resource
(NYSOPRHP Determined)

○ Copenhagen Wind 5-Mile Study Area

○ Roaring Brook Wind 5-Mile Study Area

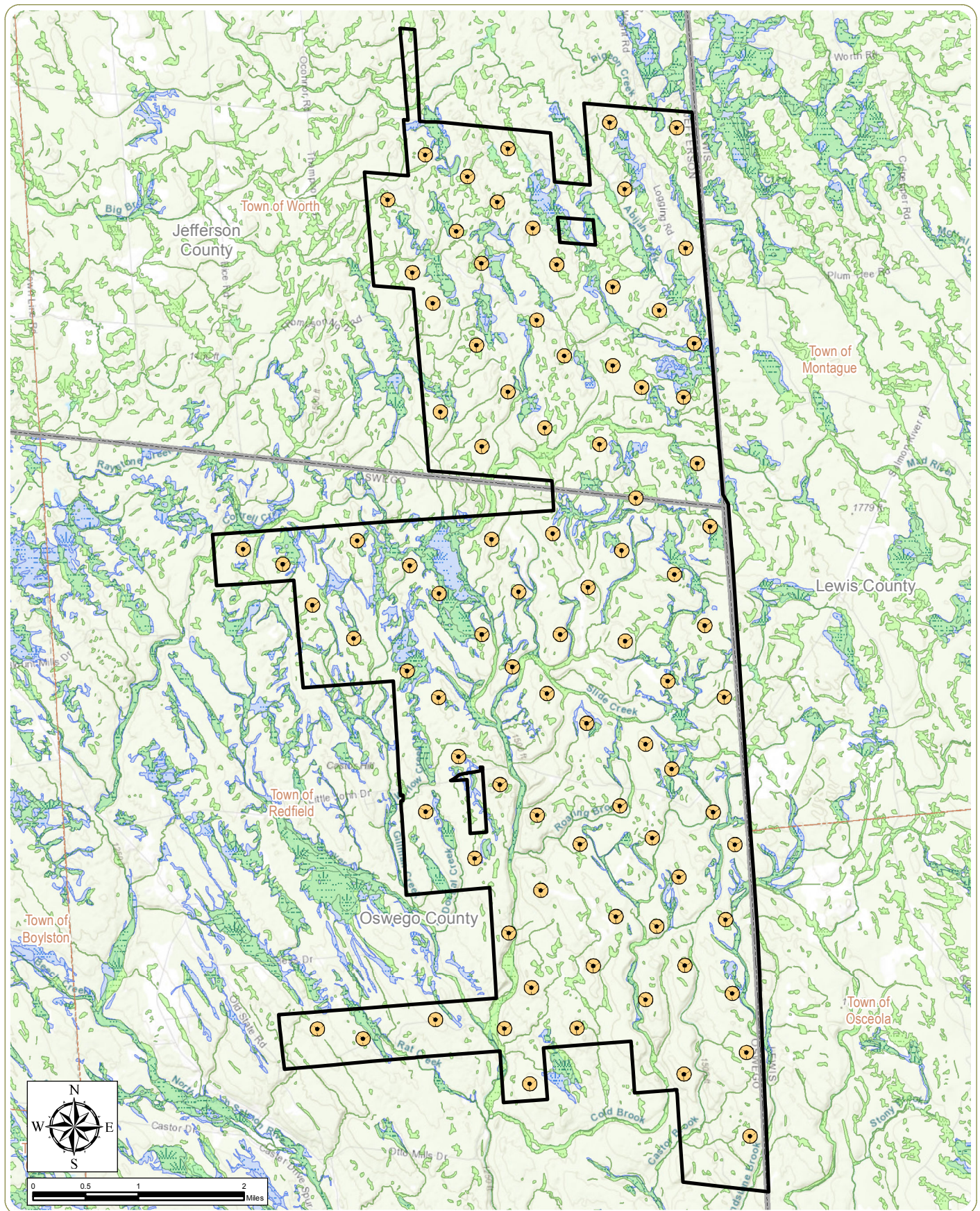
□ Facility Area

□ 5-Mile Study Area

□ County Boundary



www.edrdpc.com



Mad River Wind Farm

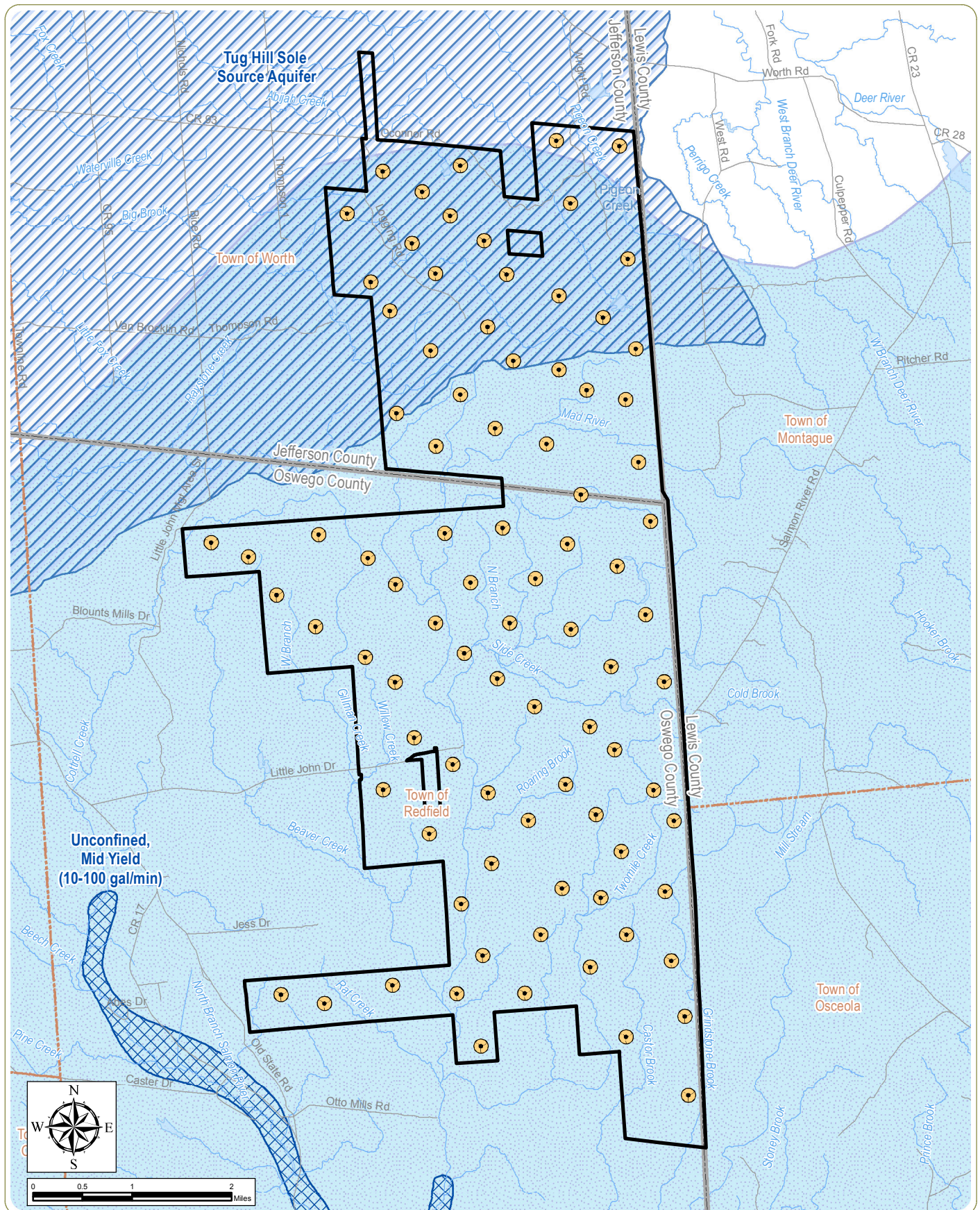
Town of Redfield, Oswego County and
Town of Worth, Jefferson County, New York

Figure 6. NWI and NYSDEC Mapped Wetlands

- Notes: 1. Basemap: ESRI ArcGIS Online "World Topographic Map" map service.
2. This map was generated in ArcMap on December 21, 2017.
3. This is a color graphic. Reproduction in grayscale may misrepresent the data.

-  Wind Turbine
-  NYSDEC Wetland
-  NWI Wetland
-  Facility Area
-  Town Boundary
-  County Boundary





Mad River Wind Farm

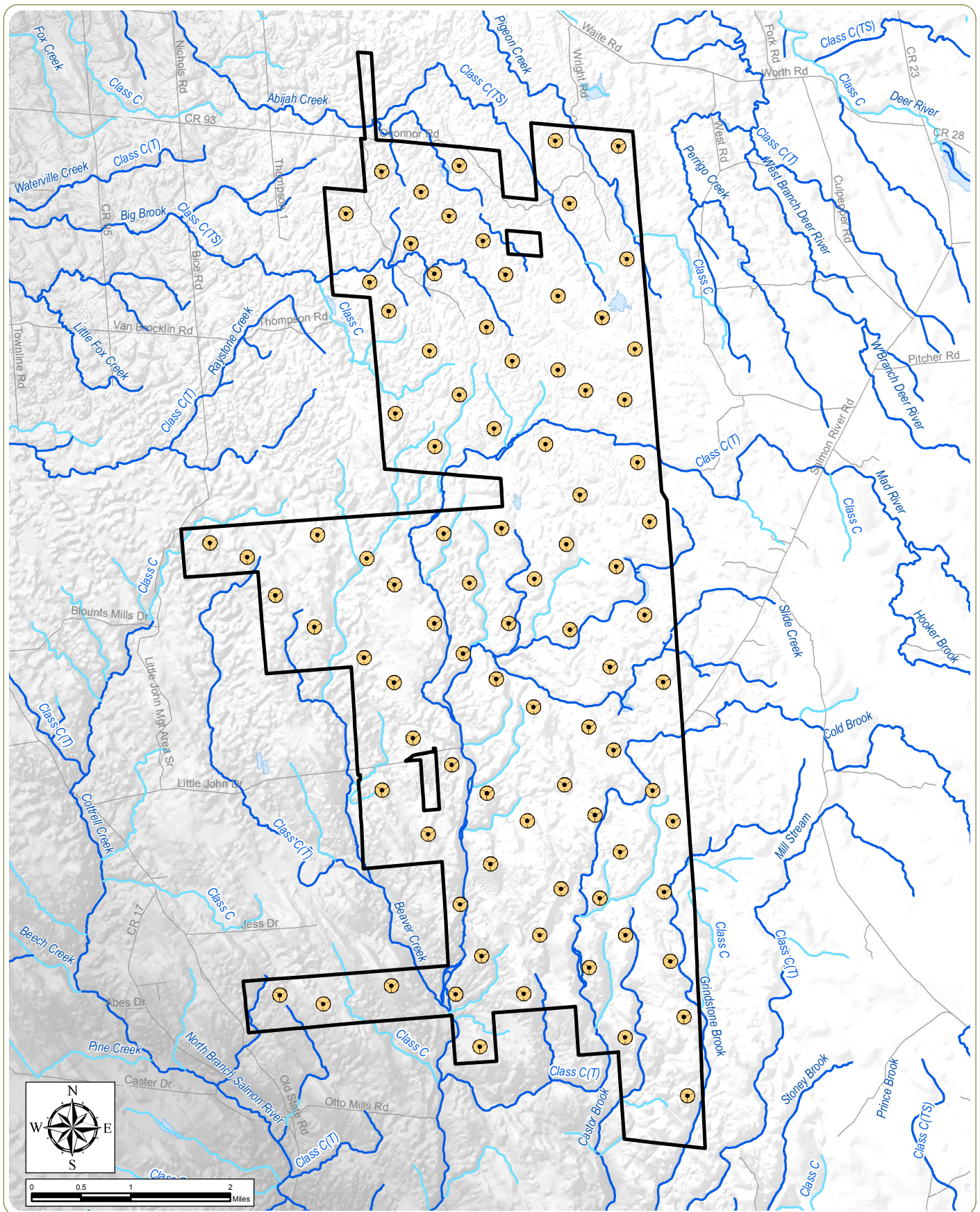
Town of Redfield, Oswego County and
Town of Worth, Jefferson County, New York

Figure 7. Groundwater Aquifers

- Notes: 1. Basemap: ESRI StreetMap North America, 2008.
2. This map was generated in ArcMap on December 21, 2017.
3. This is a color graphic. Reproduction in grayscale may misrepresent the data.

- Unconsolidated Aquifer
- Sole Source Aquifer
- New York Sandstone Bedrock Aquifer
- Wind Turbine
- Facility Area
- Town Boundary
- County Boundary





Mad River Wind Farm

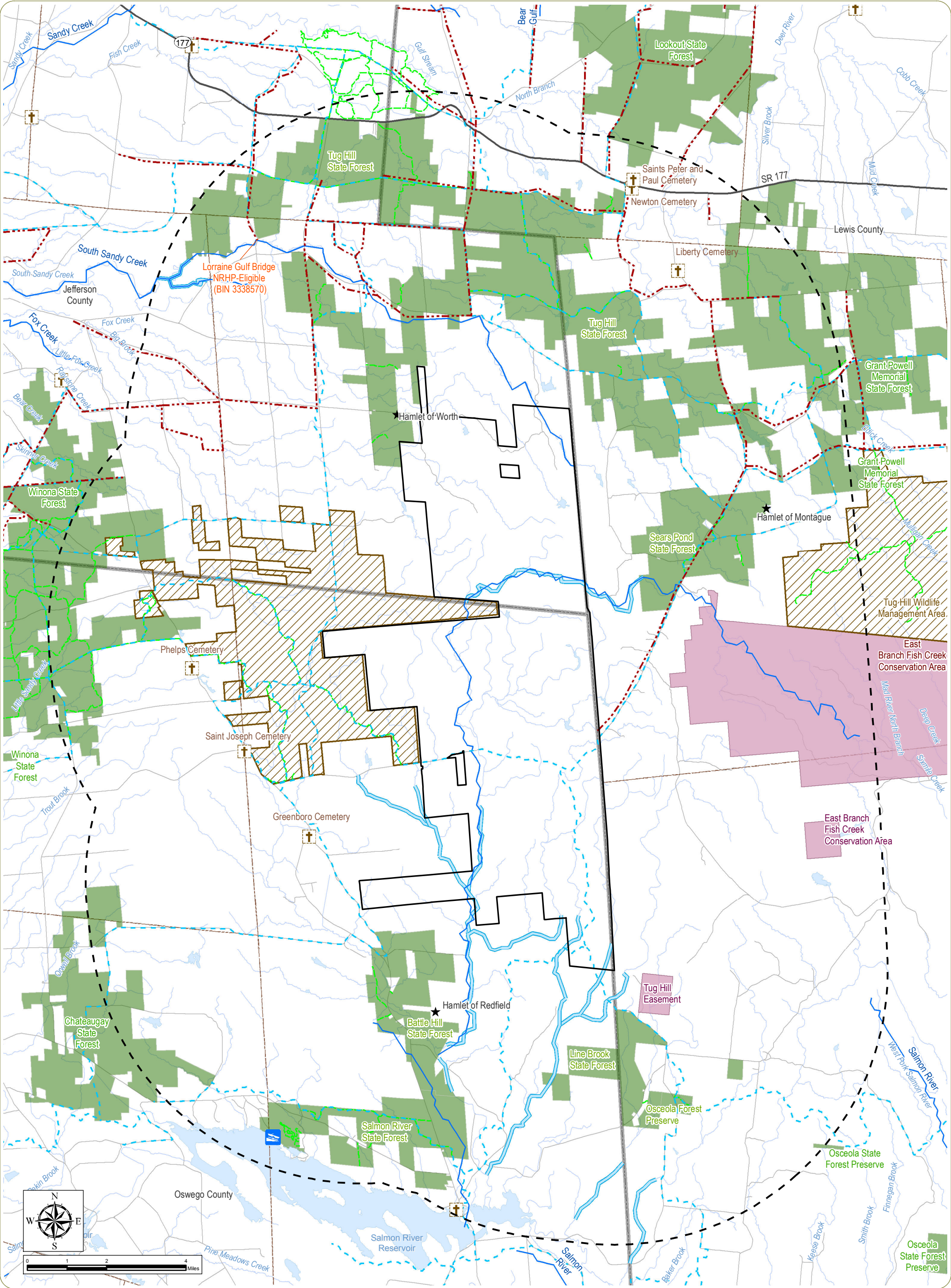
Town of Redfield, Oswego County and
Town of Worth, Jefferson County, New York

Figure 8. NYSDEC Mapped Streams

- Notes: 1. Basemap: Hillshade derived from USGS 10-meter resolution DEM.
2. This map was generated in ArcMap on December 21, 2017.
3. This is a color graphic. Reproduction in grayscale may misrepresent the data.

- Wind Turbine
- NYSDEC Protected Stream
- Unprotected Stream
- Facility Area
- Town Boundary
- County Boundary





Mad River Wind Farm

Town of Redfield, Oswego County and
Town of Worth, Jefferson County, New York

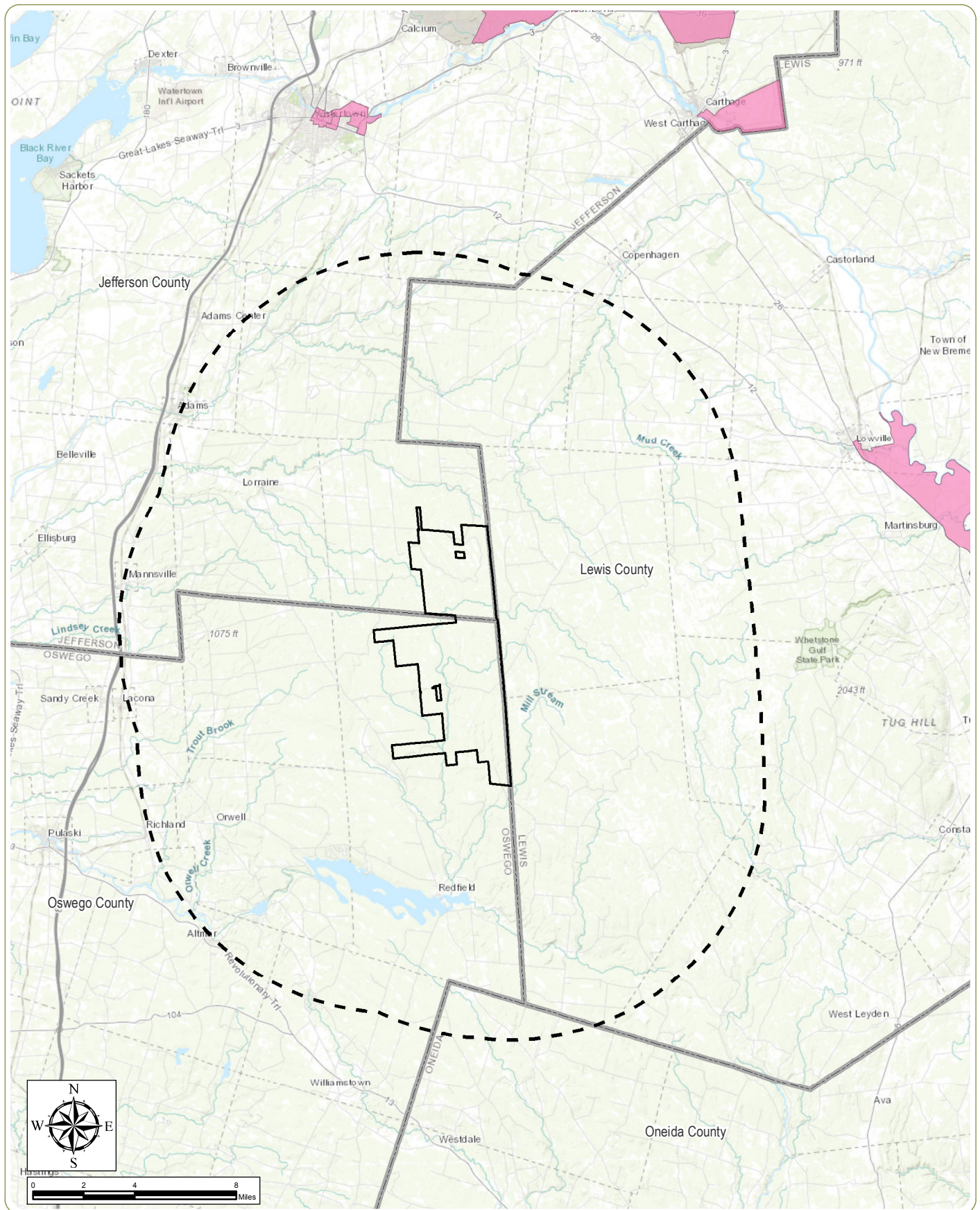
Figure 9. Visually Sensitive Resources

Sheet 1 of 2: Resources of Local and
Statewide Significance Within the 5-Mile Study Area

Notes: 1. Basemap: ESRI StreetMap North America, 2008. 2. This map was generated in ArcMap on December 21, 2017. 3. This is a color graphic. Reproduction in grayscale may misrepresent the data.

- | | | |
|----------------------|---------------------------------|----------------------|
| ★ Hamlet | — River or Stream | Water Body |
| ✠ Cemetery | — Nationwide Rivers Inventory | Other Local Resource |
| 🚤 NYSDEC Boat Launch | — NYSDEC Public Fishing Right | Facility Area |
| — ATV Trail | — Major Road | 5-Mile Study Area |
| — Snowmobile Trail | — State Wildlife Mangement Area | — Town Boundary |
| — NYSDEC Trail | — State Forest | — County Boundary |





Mad River Wind Farm

Town of Redfield, Oswego County and
Town of Worth, Jefferson County, New York

Figure 10. Potential Environmental Justice Areas

- Notes:**
1. Basemap: "World Topographic Map" map service
 2. This map was generated in ArcMap on December 21, 2017.
 3. This is a color graphic. Reproduction in grayscale may misrepresent the data.

- Environmental Justice Areas
- Facility Area
- 10-Mile Study Area
- County Boundary