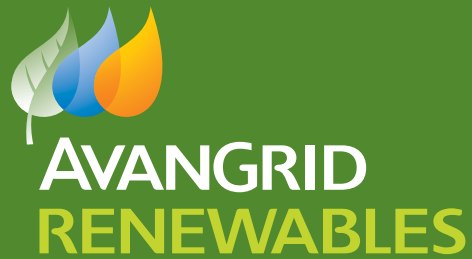


Avangrid Renewables
7650 North State Street, Suite 1
Lowville, New York 13367



PUBLIC OPEN HOUSE

MAD RIVER WIND FARM

Wednesday, March 8, 2017
2-4 p.m. or 6-8 p.m.

Redfield Fire Department
4879 County Route 17
Redfield, NY 13437

Please join us at our public open house to learn more about the Mad River Wind Farm. Attendees can visit several educational stations for more information on the project, permitting and environmental study process, interconnection study process, meteorology studies, and engineering and construction. Representatives from Avangrid Renewables and subject area experts will be available to answer questions.

We look forward to seeing you there!

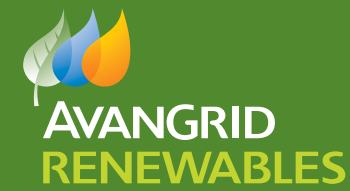
For more information, contact 315-874-4231 or MadRiverWind@avangrid.com.

New Office!

Avangrid Renewables is excited to announce it will be opening a new office location in Redfield, located at **5010 County Route 17**. Stay tuned for regular office hours. We look forward to having you visit to learn more about the Mad River Wind Farm and meet our team!

Visit Us Online!

Visit us at www.avangridrenewables.us/madriver for the latest information including facts about wind energy, project fact sheets, the environmental study process and more.



Working Together For a Clean Energy Future

Harnessing renewable energy resources like wind can lead to a better and cleaner future for all communities, as wind turbines create virtually no air pollution, no water pollution or hazardous emissions and consume no water. Notably, homegrown energy creates local jobs and energy independence, and helps support a strong manufacturing base in the U.S.

Avangrid Renewables is part of the Iberdrola Group, an energy pioneer with the largest renewable asset base of any company in the world.

- **We own and operate** nearly 60 renewable energy projects, with more than 3,000 operating turbines, in dozens of communities from coast to coast.
- **We have been active** in New York since 2006 and either co-own or operate nearly 400 megawatts (MW) of clean energy, which is sufficient to power tens of thousands of homes each year.
- **We own and operate** the 321 MW Maple Ridge Wind Farm located in the towns of Lowville, Harrisburg and Martinsburg with our partner EDP Renewables.
- **We also developed** and fully permitted the Roaring Brook Wind Farm located adjacent to Maple Ridge in the town of Martinsburg.

Our projects have brought real economic benefits for local business owners, schools and communities as a whole. We are proud to be a part of the communities where we live and work and are excited to work together with the North Country community on the proposed Mad River Wind Farm to create lasting economic opportunities for the area.



EXPECTED LOCAL ECONOMIC BENEFITS



350 construction jobs, and opportunities for local construction and construction supply vendors



20 permanent, full-time jobs



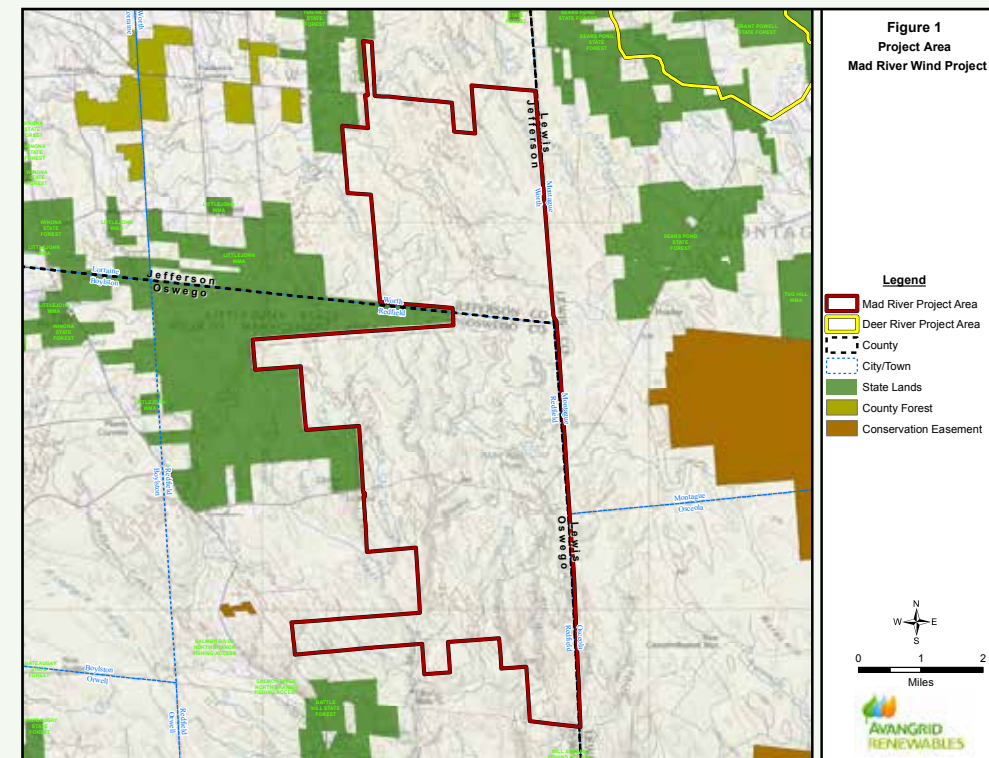
Up to \$2 million annually in increased revenues to county and local municipal tax bases to help defray costs for schools, public safety and county services (\$60 million over 30 years)



\$9 million estimated project spending on local goods and services during development and construction

Mad River Wind Farm – Project Overview

Avangrid Renewables is in the early stages of developing the Mad River Wind Farm. The proposed turbine array would be located in Jefferson and Oswego counties. We are working closely with local community members, government officials and other stakeholders to ensure a transparent and thorough process.



LOCATION: Town of **Worth** in Jefferson County and Town of **Redfield** in Oswego County.

CURRENT STATUS: The Mad River Wind Farm is currently in what is called the **pre-application and Public Involvement Program (PIP)** phase of New York's multi-year Article 10 process.

Article 10 is an established state permitting process for the siting of electric generating facilities. It includes local involvement, state and agency oversight, and scientific research guided by numerous state and federal agencies on a variety of environmental and engineering topics.

Up to
350
Megawatts

**WIND FARM
GENERATION
CAPACITY**

Up to
125

**NUMBER
OF WIND
TURBINES**

BENEFITS FOR THE WHOLE COMMUNITY



“The benefits that wind farms bring to the community are greater than any potential disadvantages. The school district has been able to do a lot more projects and local businesses have benefited from the people that it brings in. During construction, the workers came to our restaurant every night and they became a part of our family. We’ve also seen an influx of tourists coming to the area to check out the wind farm, which has resulted in increased business.”

– **Jeremy Kelly**

General Manager of Jeb's Restaurant, located near the Maple Ridge Wind Farm in Lowville, New York

