

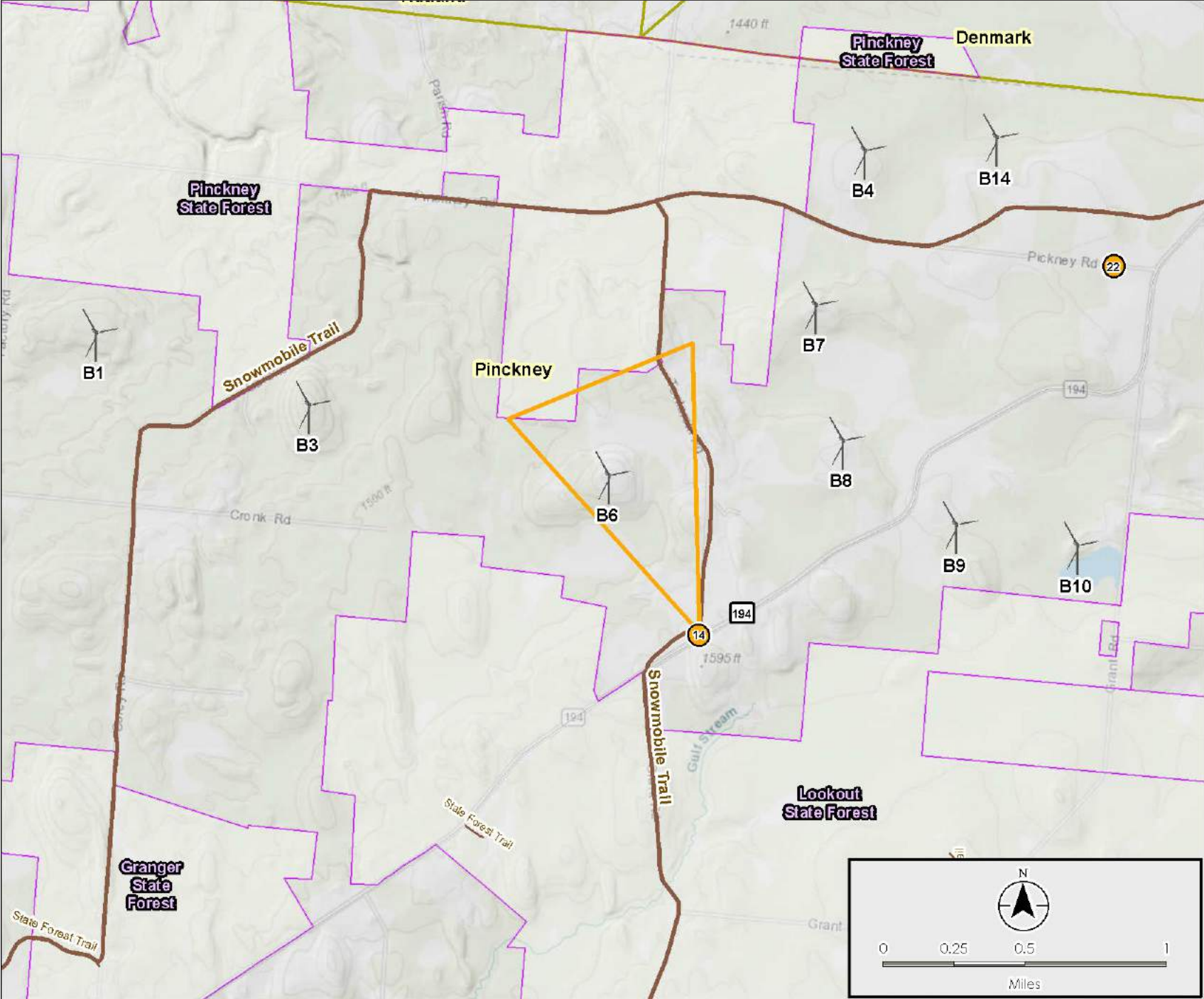
Viewpoint 14 // Approaching Lookout State Forest



View to the northwest from County Road 194, just northeast of Lookout State Forest. The nearest turbine (B6) would be visible 0.7 mile away. **Visually Sensitive Resource(s) Represented by Viewpoint:** Lookout State Forest

Deer River Wind Farm

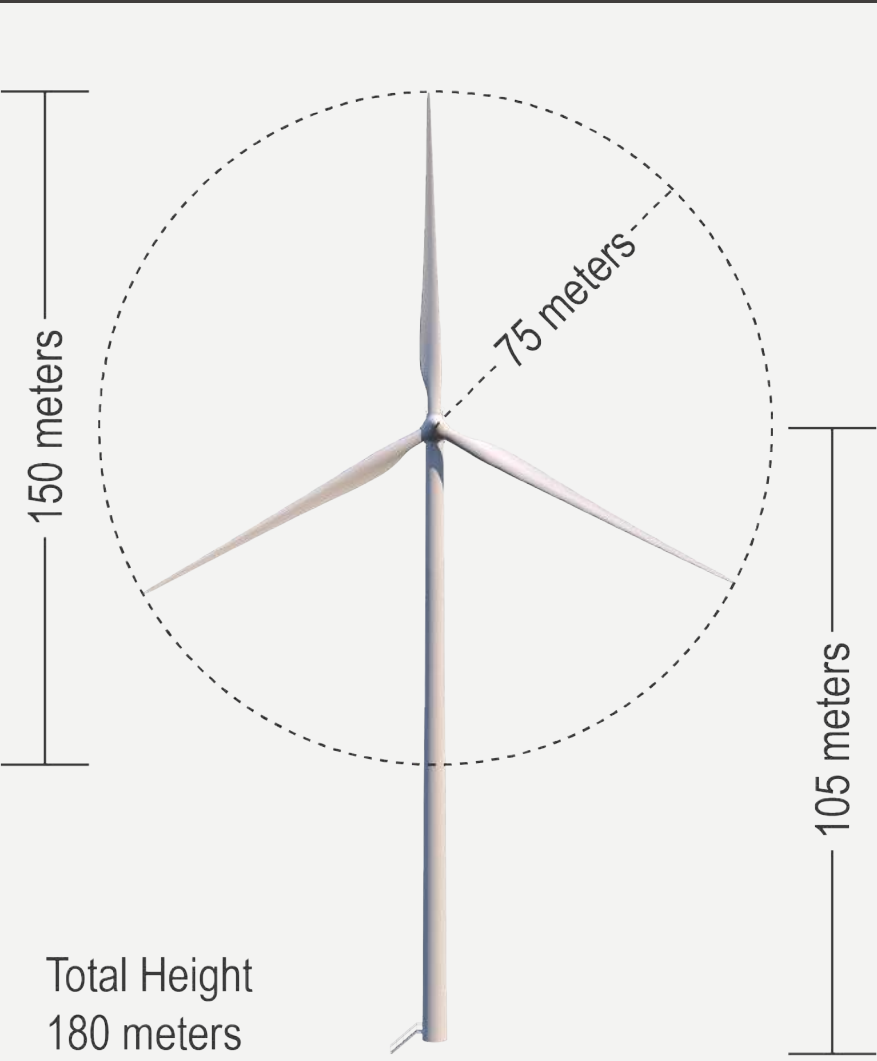
VIEWPOINT LOCATION MAP



TECHNICAL INFORMATION

Location	County Road 194 at Tontarski Road
Viewing Direction	Northwest
Date & Time	27 September 2018, 1:31 p.m.
Camera Focal Length	50mm
Camera Make/Model	Canon 5Ds
Photo Source	Stantec
Number Turbines Visible	1

TURBINE SPECIFICATIONS



November 2018



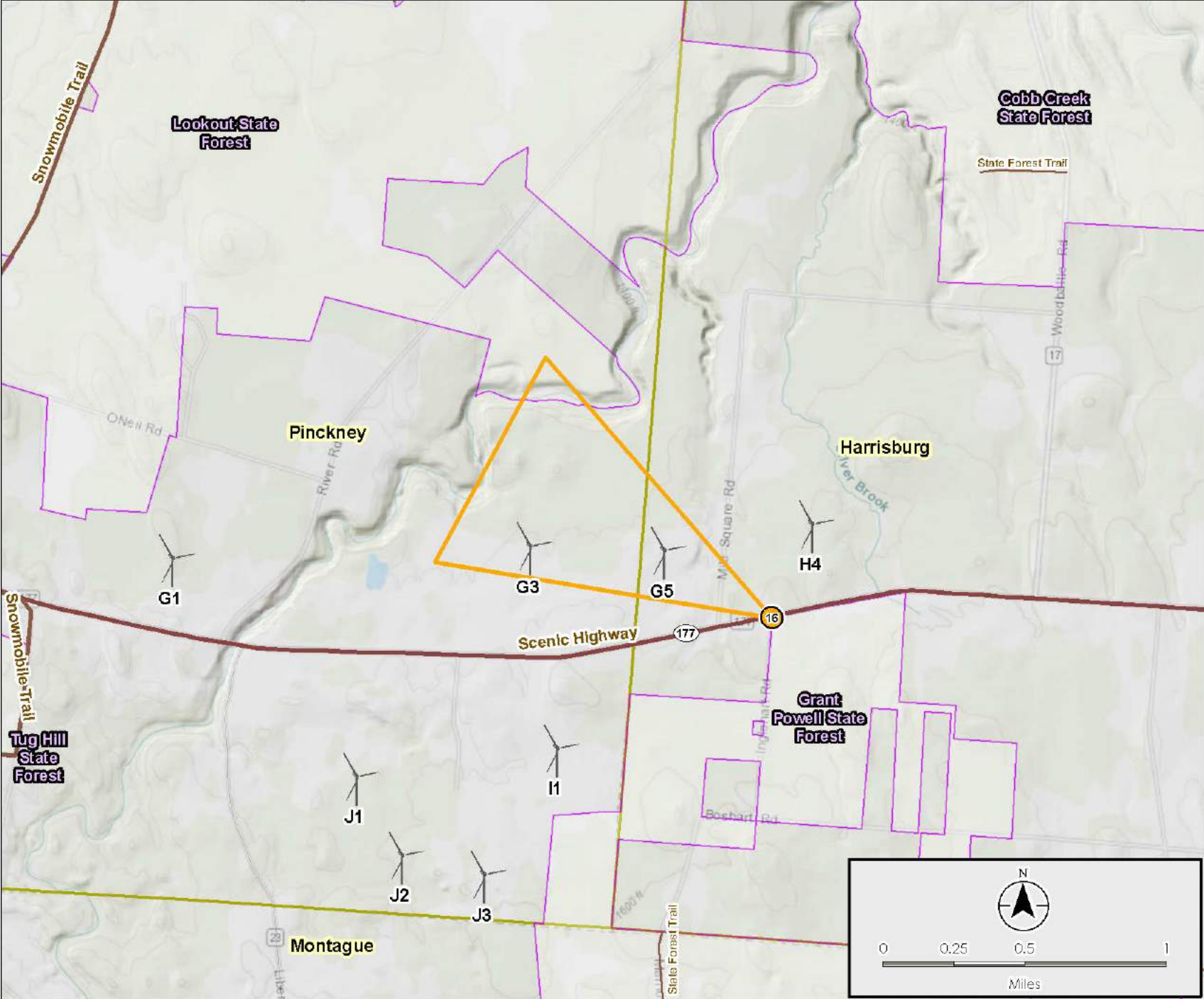
Viewpoint 16 // Leaving Grant Powell State Forest



View to the northwest from the intersection of State Route 177 and Inglehart Road. The nearest turbine (G5) would be visible 0.4 mile away. Visually Sensitive Resource(s) Represented by Viewpoint: Grant Powell State Forest

Deer River Wind Farm

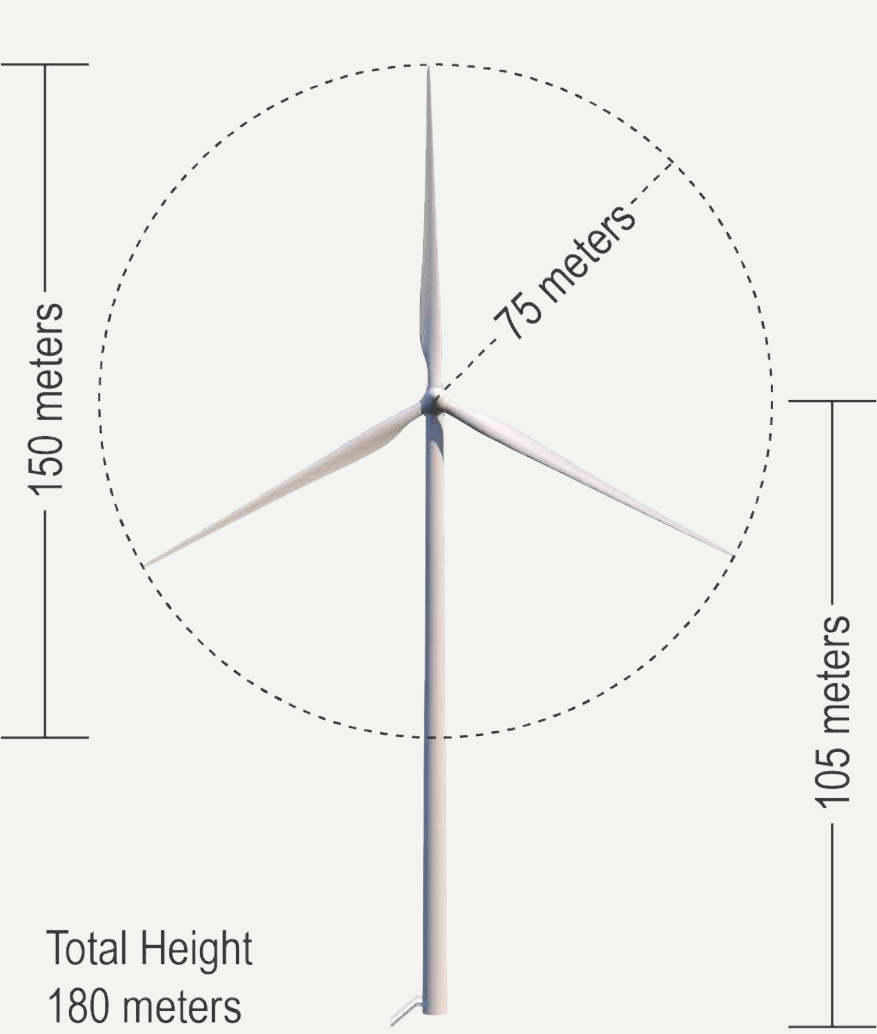
VIEWPOINT LOCATION MAP



TECHNICAL INFORMATION

Location	Inglehart Road at State Route 177
Viewing Direction	Northwest
Date & Time	27 September 2018, 2:03 p.m.
Camera Focal Length	50mm
Camera Make/Model	Canon 5Ds
Photo Source	Stantec
Number Turbines Visible	2

TURBINE SPECIFICATIONS



November 2018



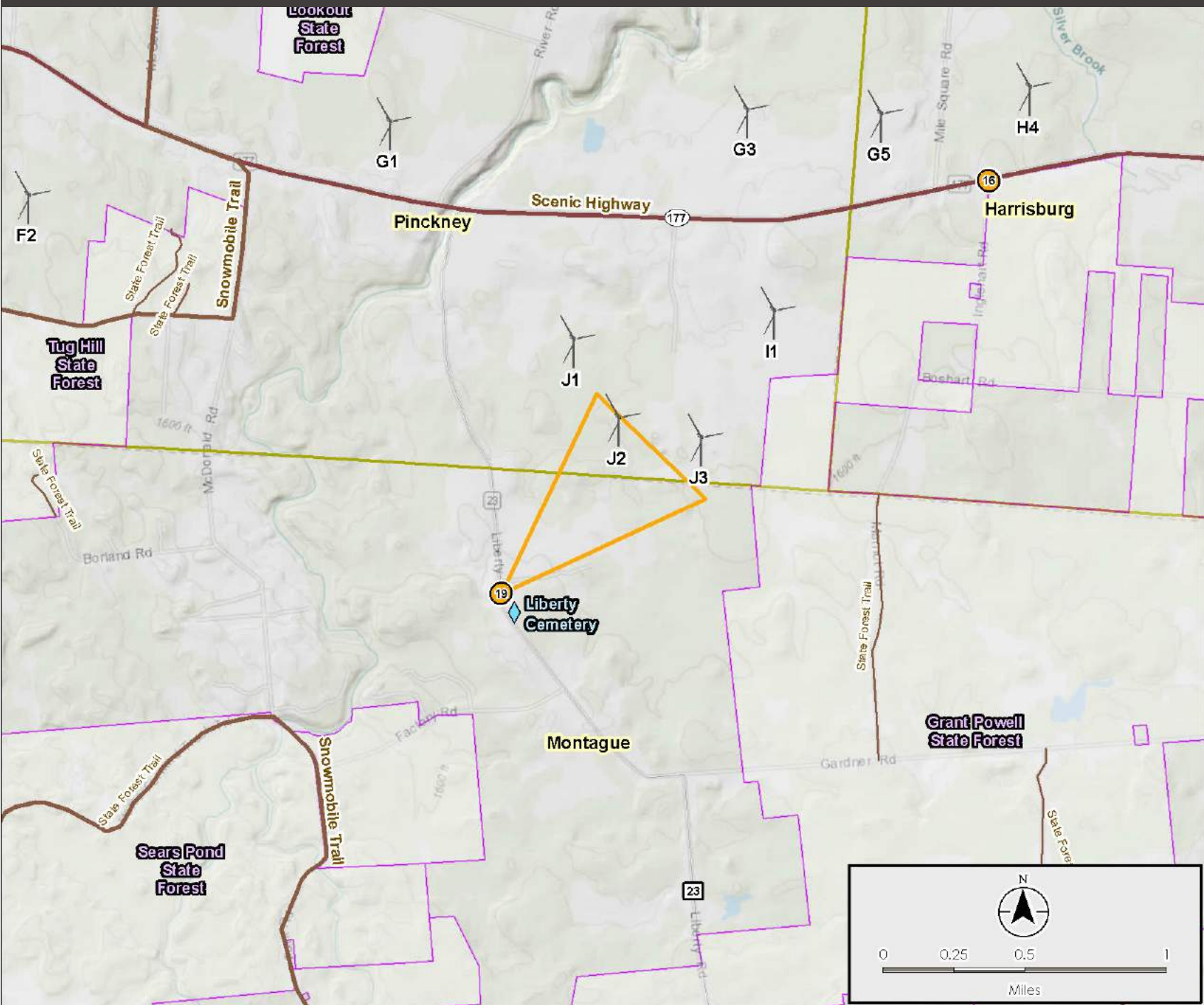
Viewpoint 19 // Liberty Road



View to the northeast from Liberty Road, between State Route 177 and Gardner Road. The nearest turbine (J5) would be visible 0.7 mile away. Visually Sensitive Resource(s) Represented by Viewpoint: Liberty Cemetery

Deer River Wind Farm

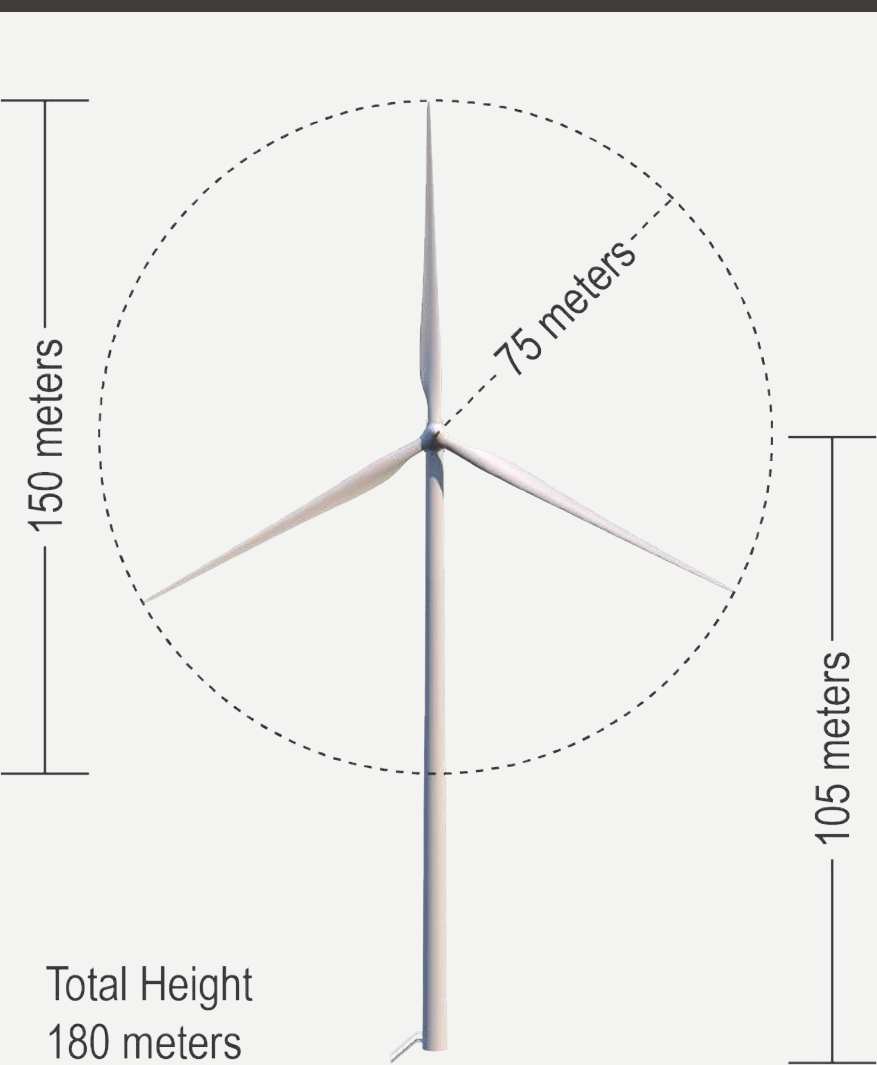
VIEWPOINT LOCATION MAP



TECHNICAL INFORMATION

Location	Liberty Road, 1.5 mi south of SR 177
Viewing Direction	South
Date & Time	27 September 2018, 2:52 p.m.
Camera Focal Length	50mm
Camera Make/Model	Canon 5Ds
Photo Source	Stantec
Number Turbines Visible	5

TURBINE SPECIFICATIONS



November 2018

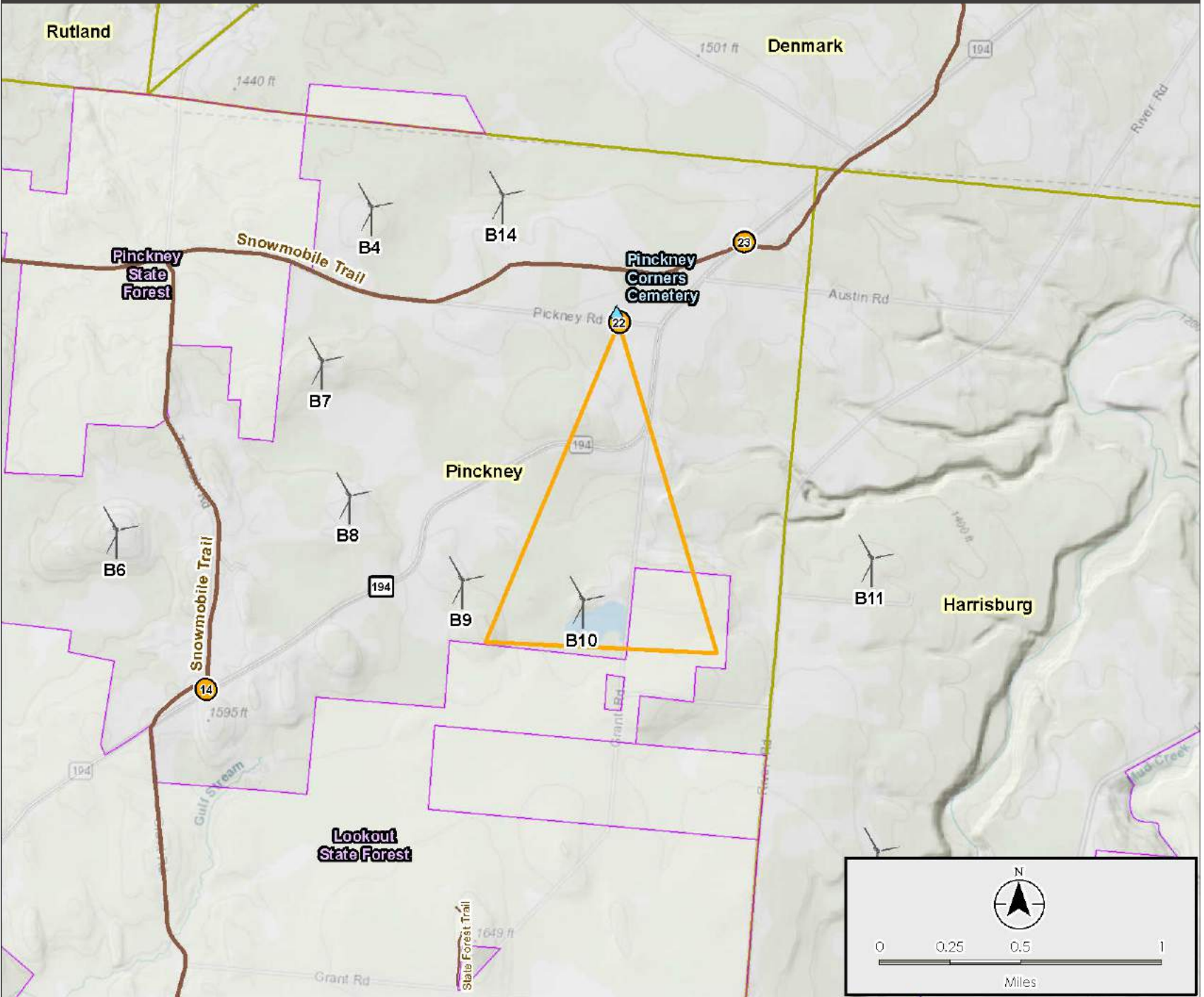


Viewpoint 22 // Pinckney Road

Deer River Wind Farm



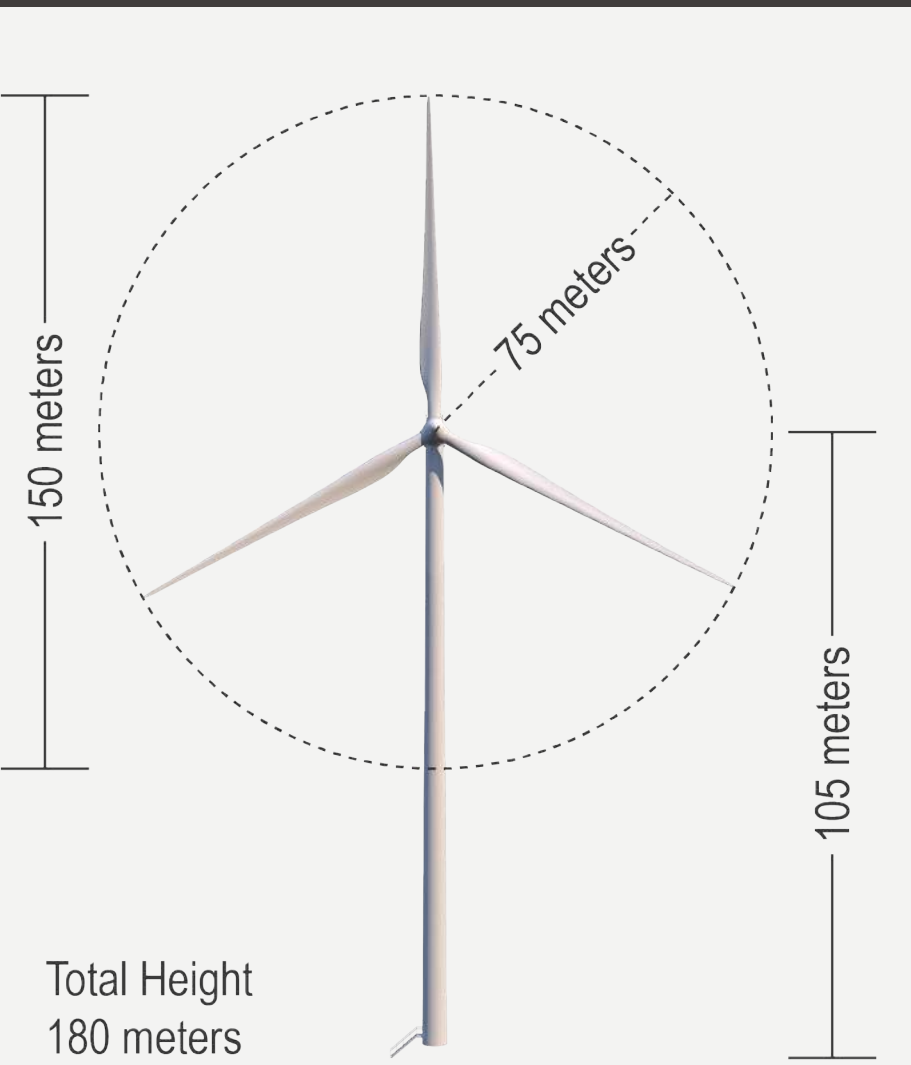
VIEWPOINT LOCATION MAP



TECHNICAL INFORMATION

Location	Pinckney Road west of County Road 194
Viewing Direction	South
Date & Time	27 September 2018, 1:25 p.m.
Camera Focal Length	50mm
Camera Make/Model	Canon 5Ds
Photo Source	Stantec
Number Turbines Visible	3

TURBINE SPECIFICATIONS



November 2018

View to the south from Pinckney Road, near County Road 194. The nearest turbine (B10) would be visible 1 mile away. Visually Sensitive Resource(s) Represented by Viewpoint: Pinckney Corners Cemetery



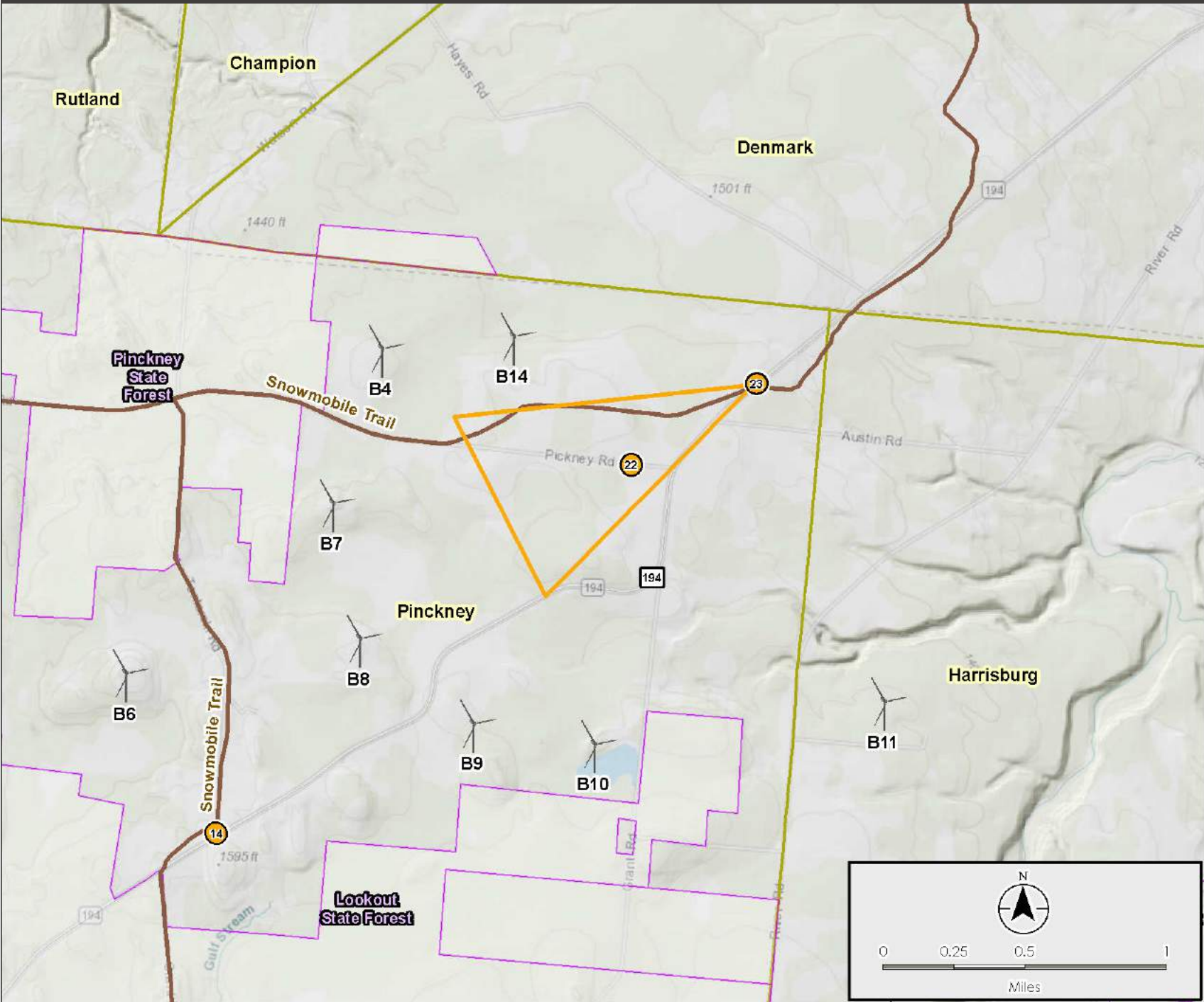
Viewpoint 23 // Hayes



View to the west-southwest from the westbound lane of County Road 194 toward Pinckney State Forest, near Hayes. The nearest turbine (B7) would be visible 1.6 miles away. Visually Sensitive Resource(s) Represented by Viewpoint: Snowmobile Trail

Deer River Wind Farm

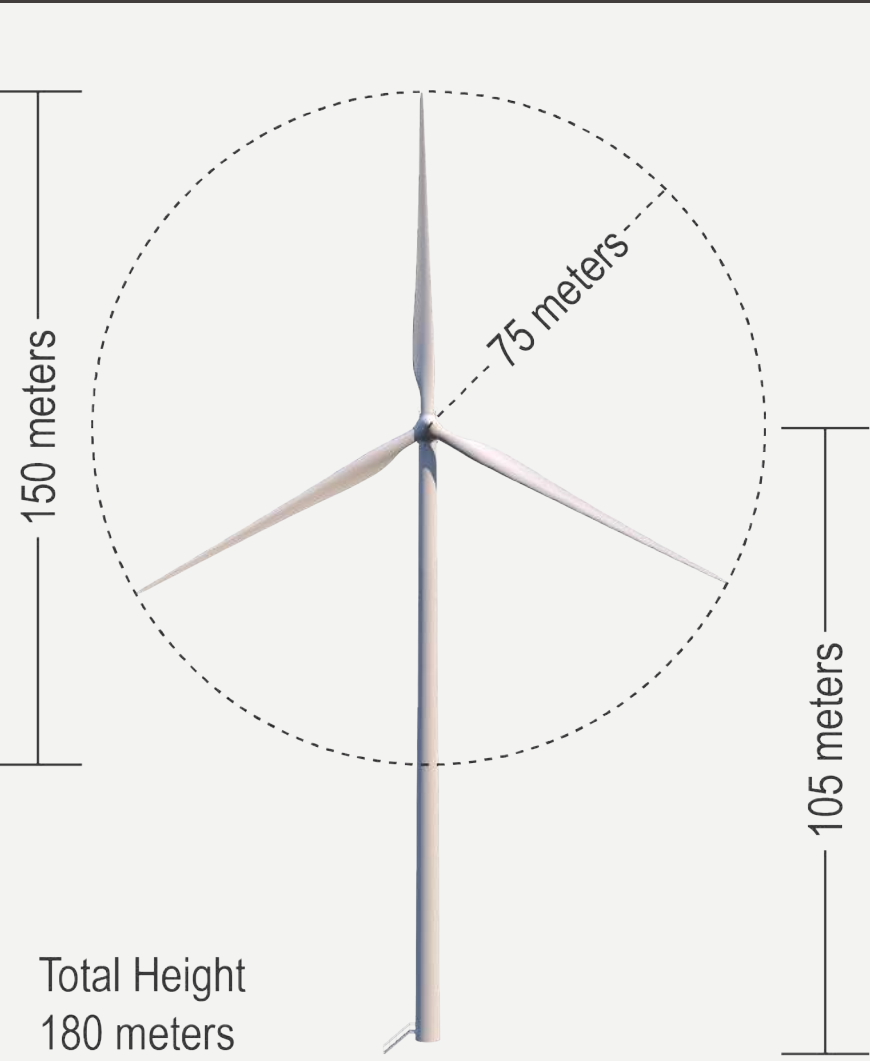
VIEWPOINT LOCATION MAP



TECHNICAL INFORMATION

Location	County Road 194 southwest of Hayes Road
Viewing Direction	West-Southwest
Date & Time	27 September 2018, 1:17 p.m.
Camera Focal Length	50mm
Camera Make/Model	Canon 5Ds
Photo Source	Stantec
Number Turbines Visible	3

TURBINE SPECIFICATIONS



November 2018

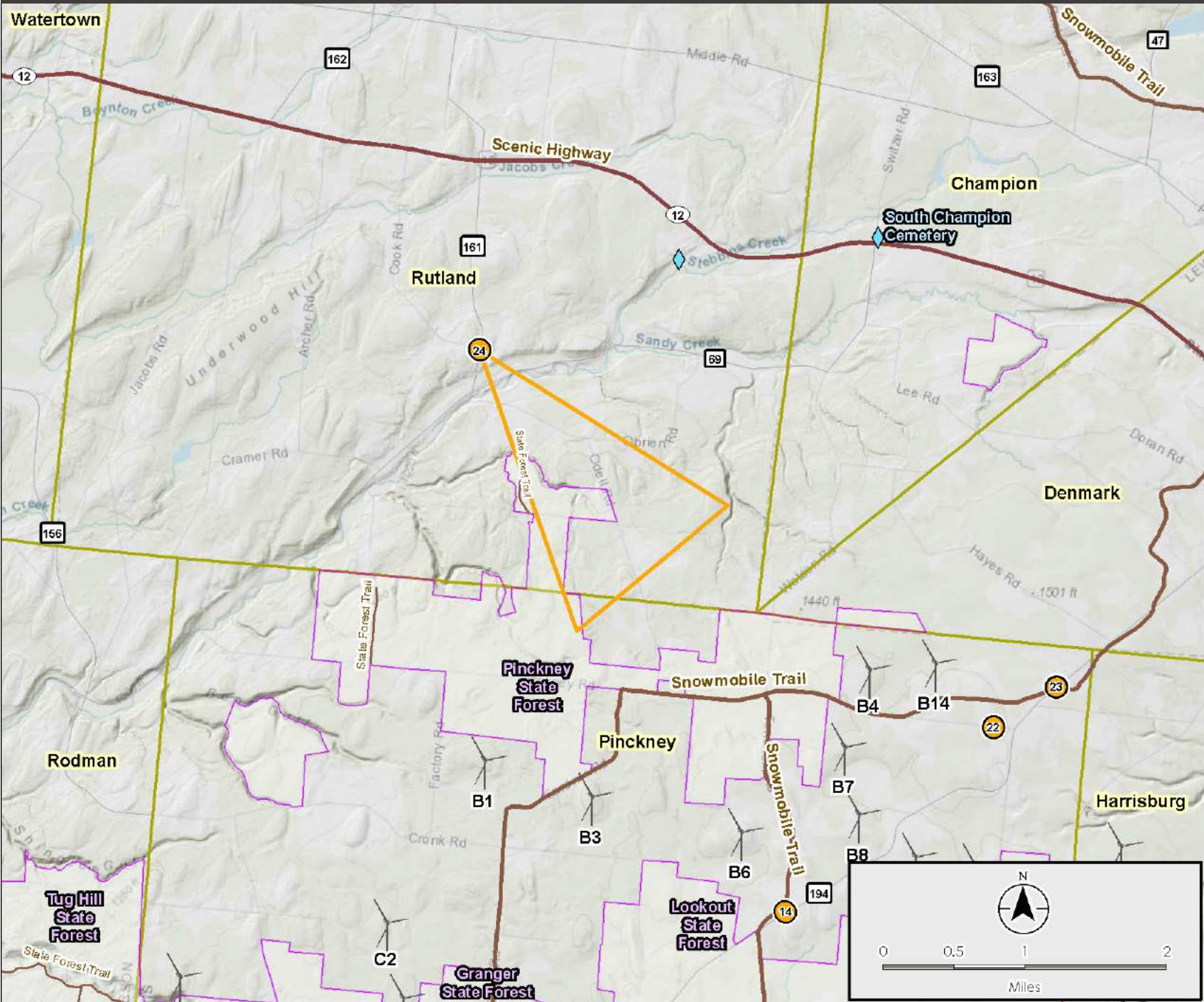


Viewpoint 24 // County Road 161 / Eames Corners Road

Deer River Wind Farm



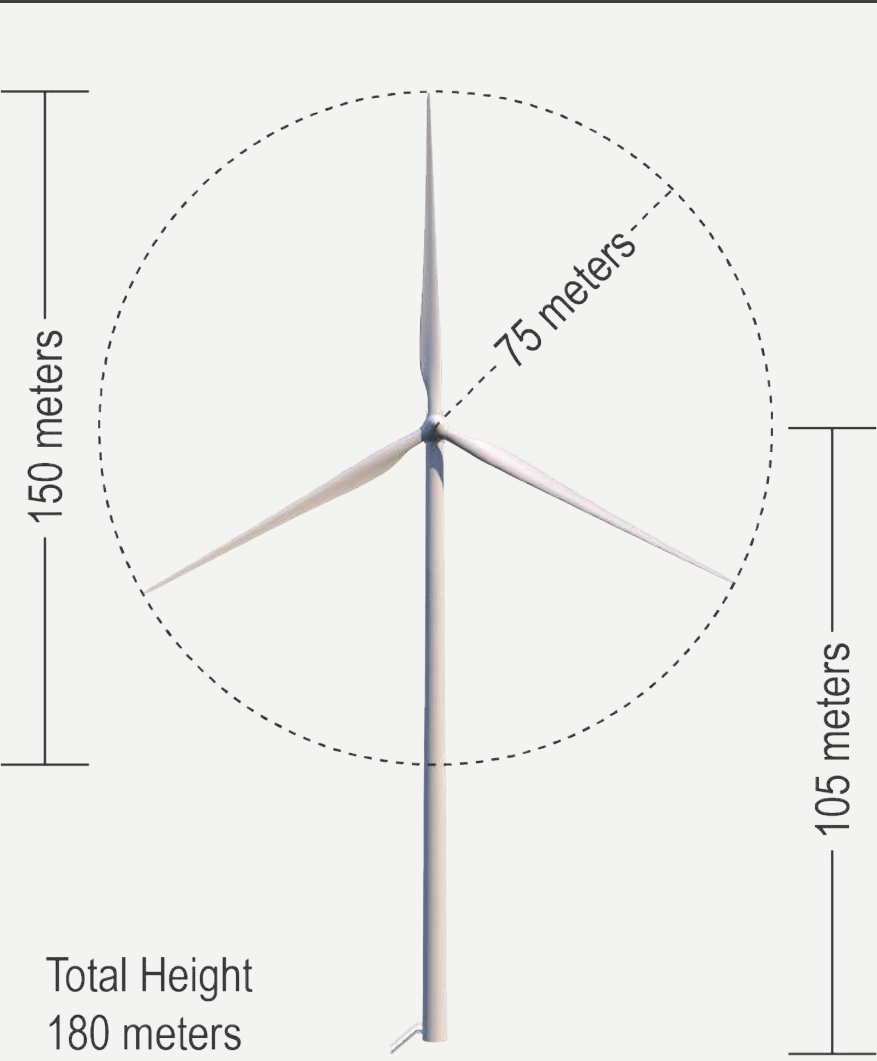
VIEWPOINT LOCATION MAP



TECHNICAL INFORMATION

Location	County Road 161 near Cook Road
Viewing Direction	Southwest
Date & Time	27 September 2018, 12:58 p.m.
Camera Focal Length	50mm
Camera Make/Model	Canon 5Ds
Photo Source	Stantec
Number Turbines Visible	8

TURBINE SPECIFICATIONS



November 2018

View to the southeast from County Road 161 near Cook Road. The nearest turbine (B4) would be visible 3.5 miles away. Visually Sensitive Resource(s) Represented by Viewpoint: rural residences



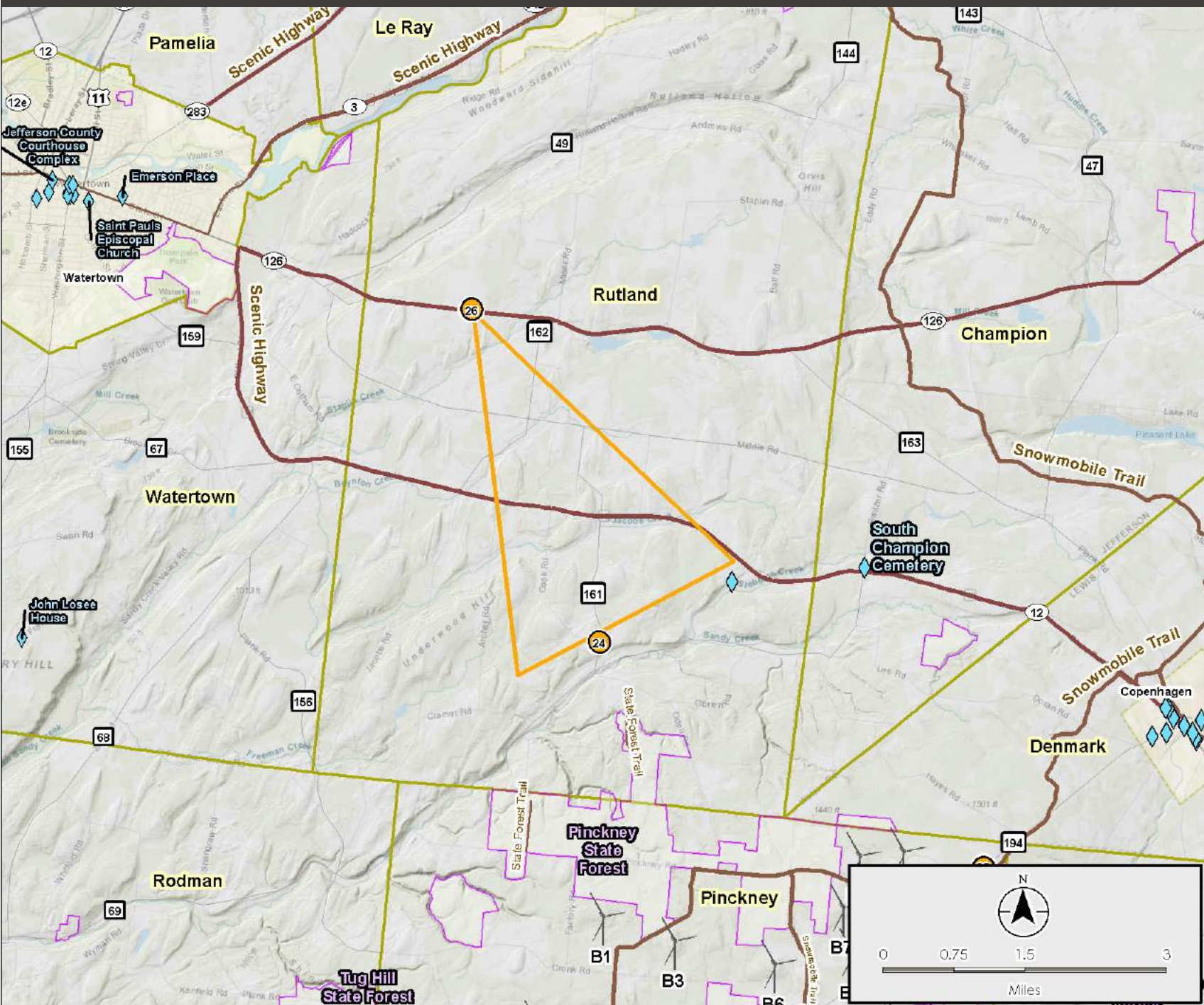
Viewpoint 26 // State Route 126



View to the south-southeast from State Route 126, east of Watertown. The nearest turbine (B1) would be visible 6.5 miles away. Visually Sensitive Resource(s) Represented by Viewpoint: Watertown vicinity

Deer River Wind Farm

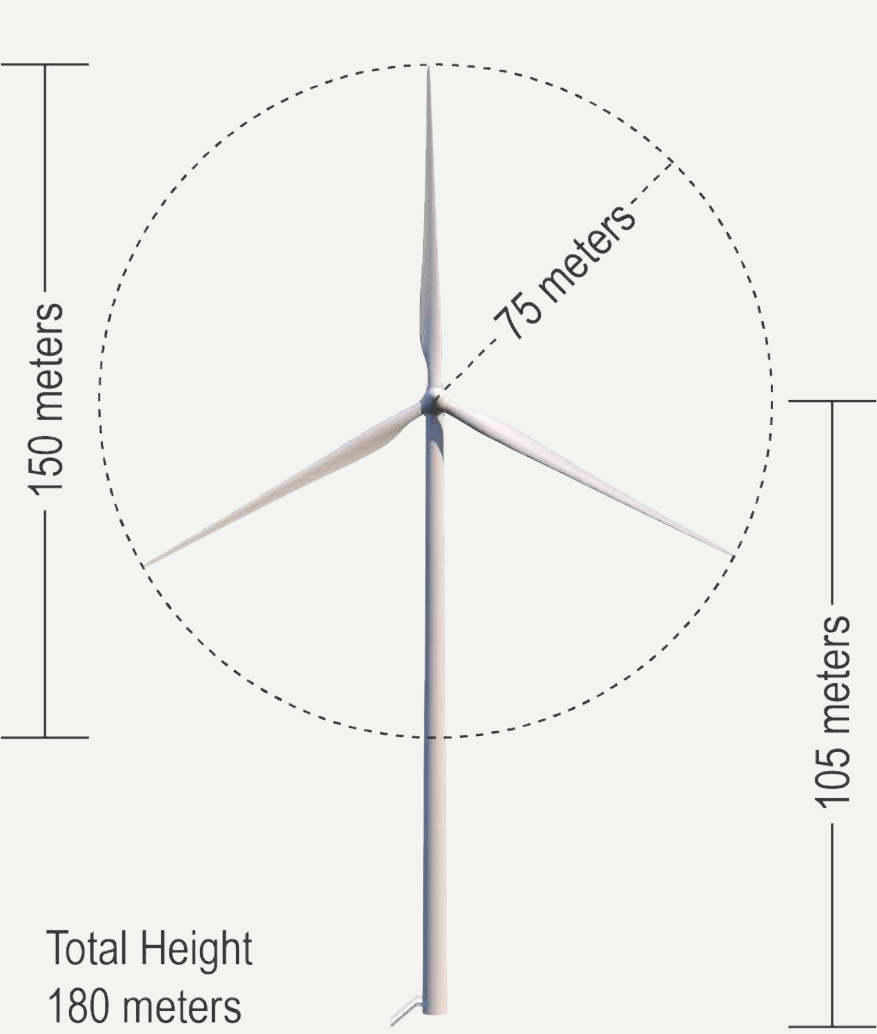
VIEWPOINT LOCATION MAP



TECHNICAL INFORMATION

Location	State Route 126, east of Watertown
Viewing Direction	South-Southwest
Date & Time	27 September 2018, 10:05 a.m.
Camera Focal Length	50mm
Camera Make/Model	Canon 5Ds
Photo Source	Stantec
Number Turbines Visible	12

TURBINE SPECIFICATIONS



November 2018