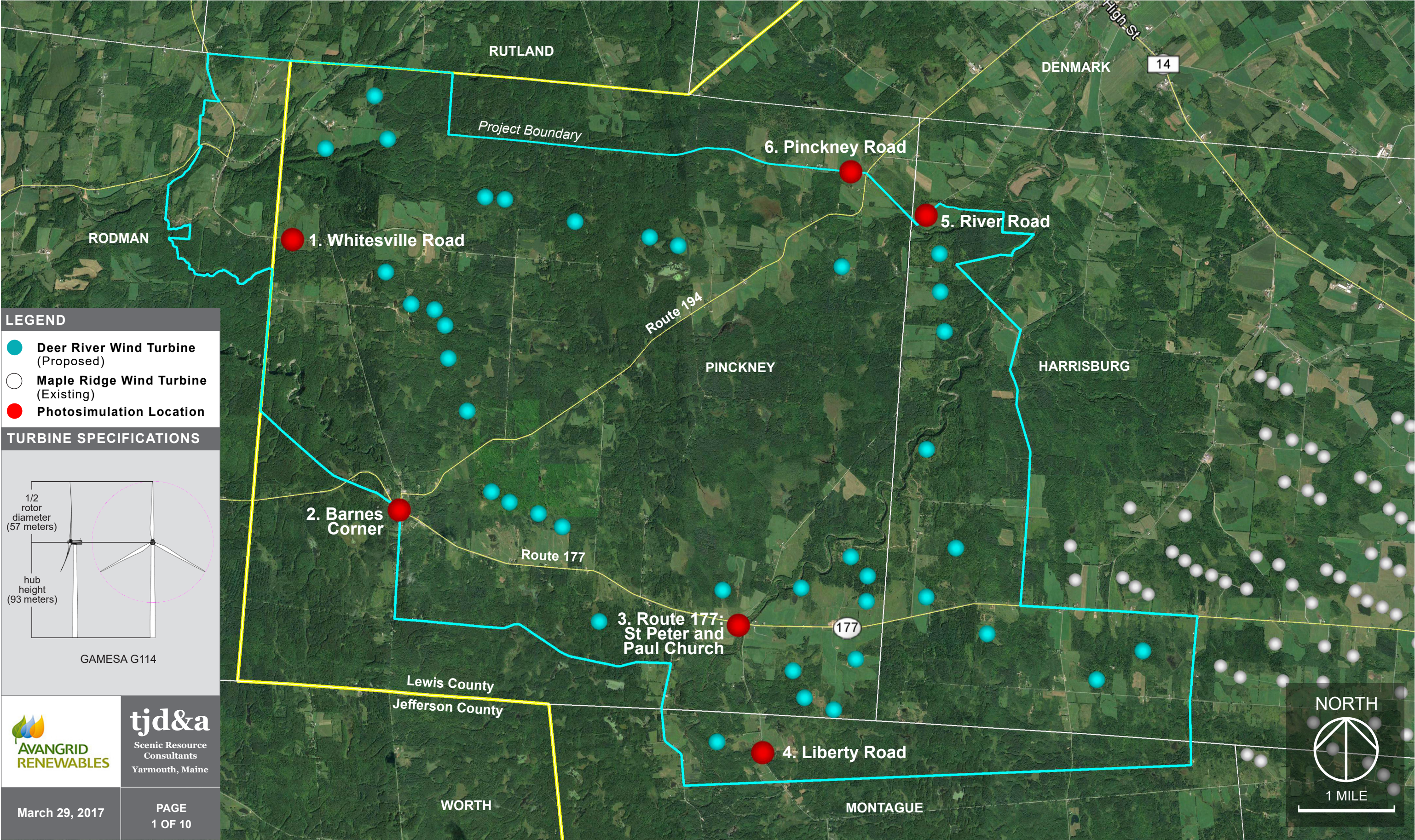


# APPENDIX H

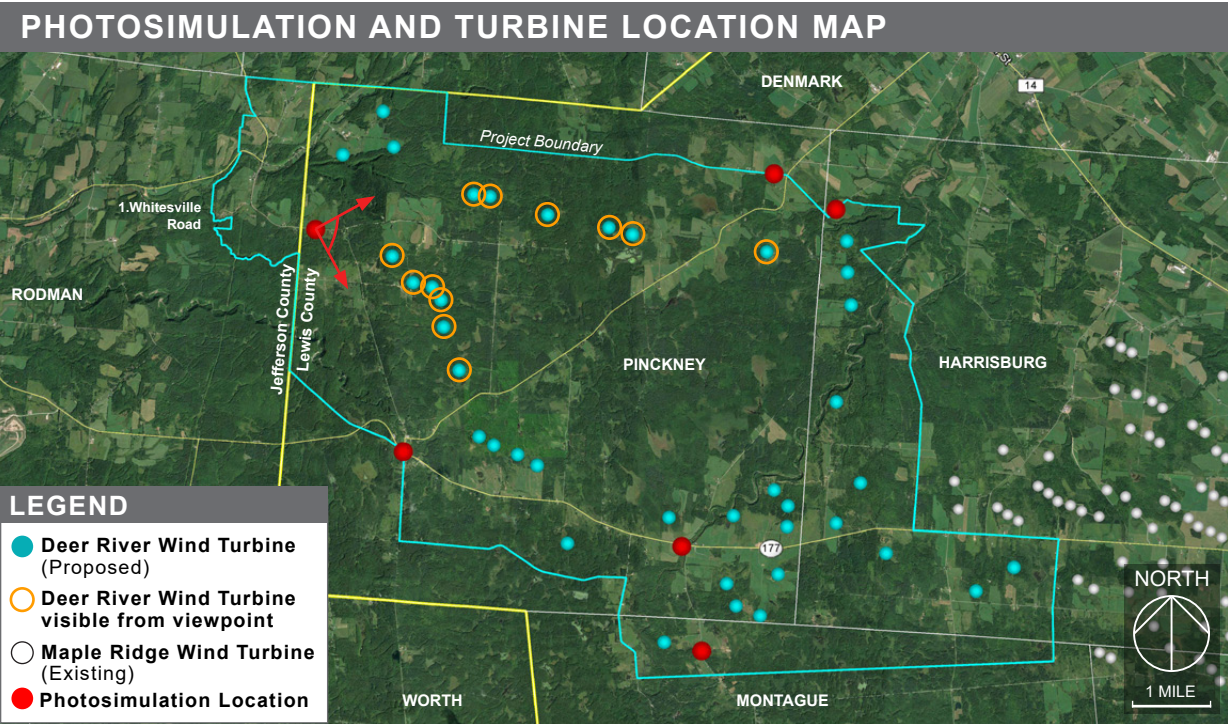
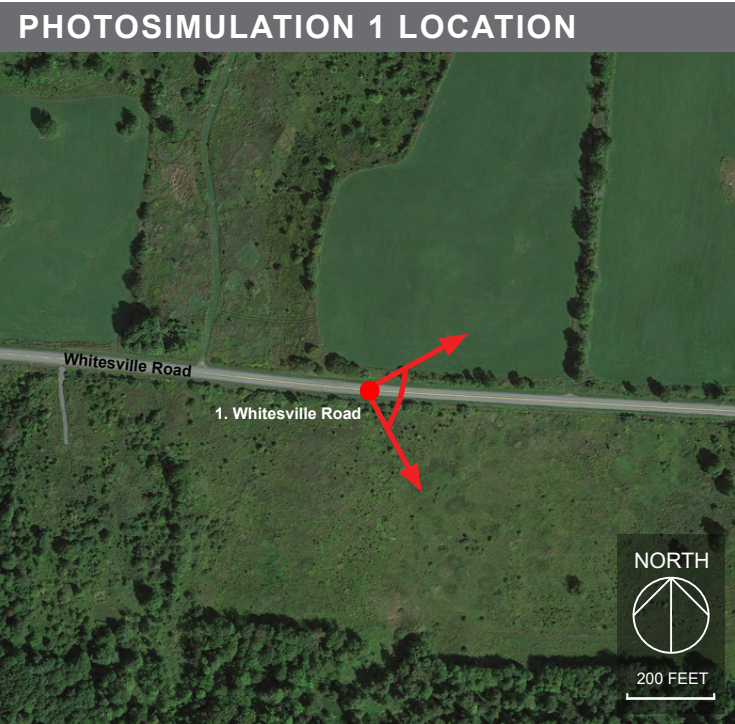








**Proposed Conditions:** Panoramic view from Whitesville Road in Pinckney near the Rodman town line. Approximately ten turbines and the blades of two turbines may be visible from this viewpoint looking northeast to southeast at distances of 1.0 miles to 5.6 miles.



TECHNICAL INFORMATION

Turbine Specifications	Photograph / Photosimulation Information	
<p>GAMESA G114</p>	Location	43.857364°, -75.839504°
	Viewing Direction	North to Southeast
	Date and Time	02/17/17 at 2:52 pm
	Camera Focal Length	34 mm
	Camera Make/Model	Nikon D5500
	Photo Source	TJD&A
	Number Turbines Visible	10 Turbines, 2 Blades

AVANGRID RENEWABLES

tjd&a

Scenic Resource Consultants

Yarmouth, Maine

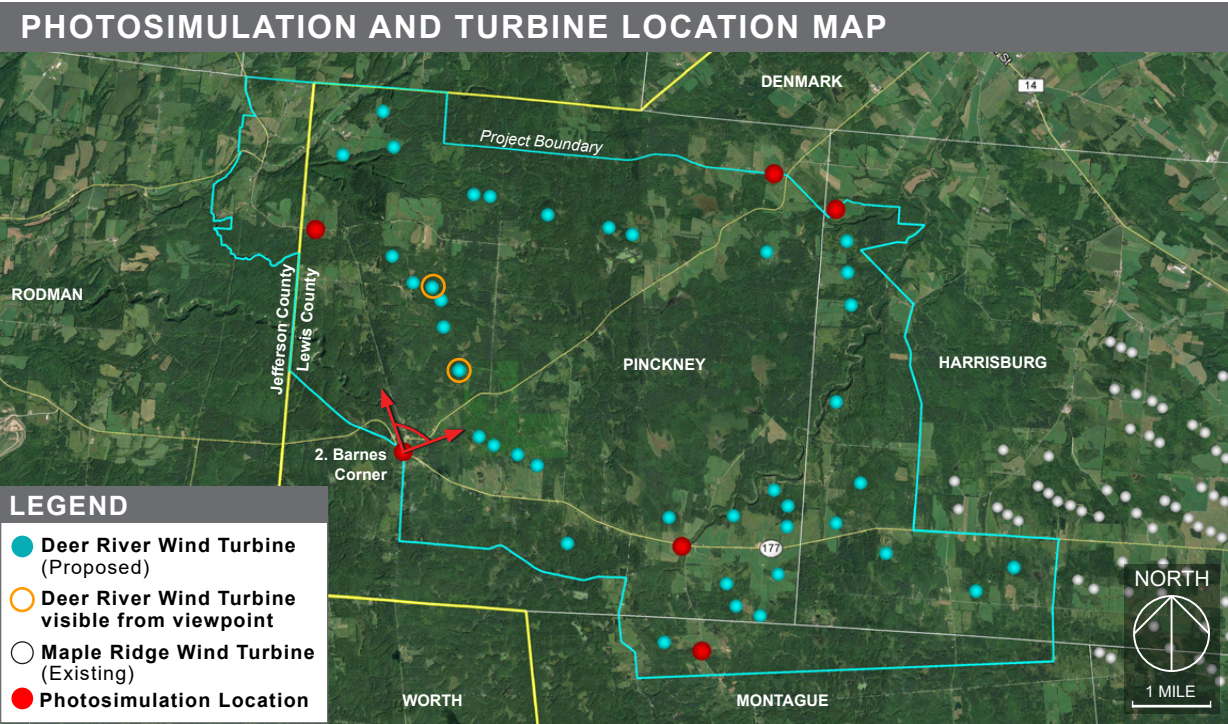
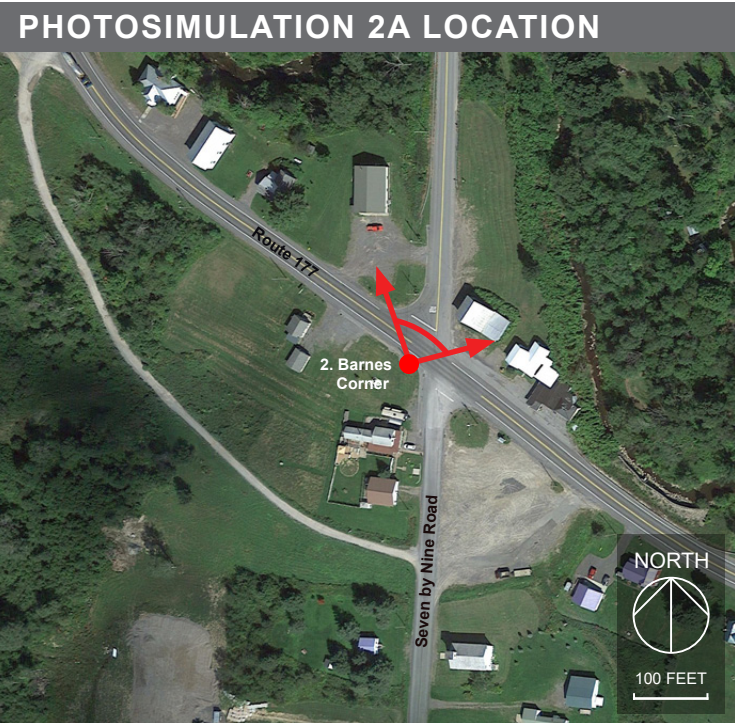
March 29, 2017

PAGE 2 OF 10





**Proposed Conditions:** Panoramic view from Route 177 adjacent to Seven by Nine Road in Pinckney. Filtered views of one turbine (to the left of the barn) and the blades of one turbine may be visible from this viewpoint looking northwest to northeast at distances of 1.2 to 2.1 miles. The majority of turbines would be screened by existing vegetation when looking north from this viewpoint.



**TECHNICAL INFORMATION**

Turbine Specifications		Photograph / Photosimulation Information	
<p>GAMESA G114</p>		Location	43.817295°, -75.817514°
		Viewing Direction	Northwest to Northeast
		Date and Time	02/17/17 at 2:20 pm
		Camera Focal Length	36 mm
		Camera Make/Model	Nikon D5500
		Photo Source	TJD&A
		Number Turbines Visible	1 Turbine, 1 Blade

**AVANGRID RENEWABLES**

**tjd&a**  
Scenic Resource Consultants  
Yarmouth, Maine

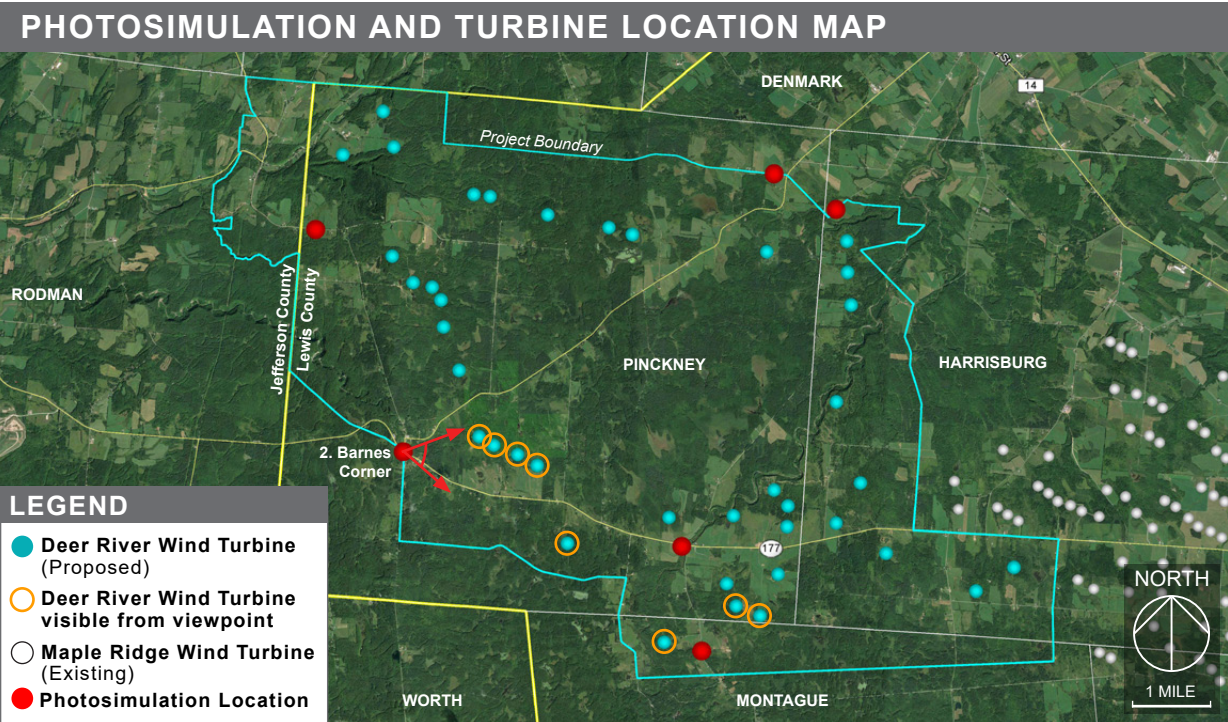
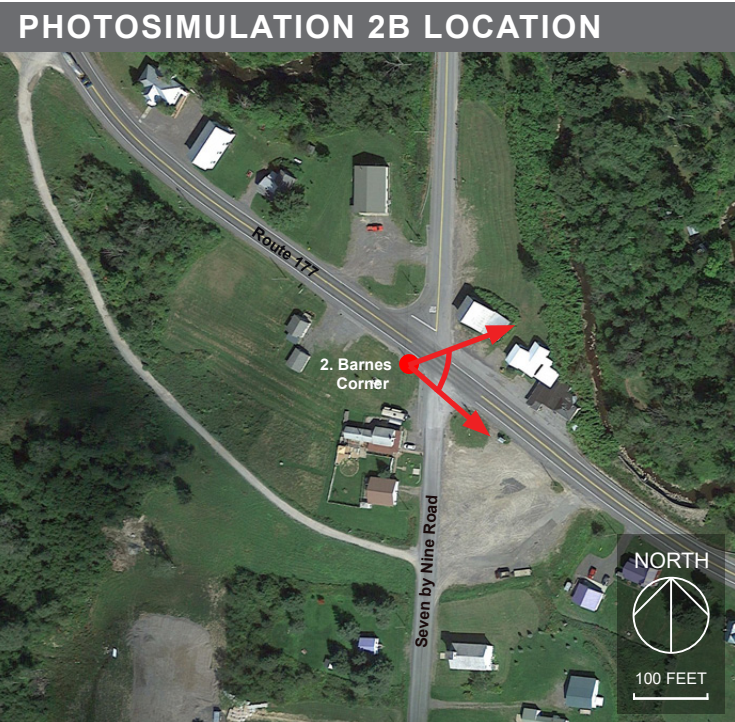
March 29, 2017

PAGE 3 OF 10





**Proposed Conditions:** Panoramic view from Route 177 adjacent to Seven by Nine Road in Pinckney. Approximately four turbines and the blades of four turbines may be visible from this viewpoint looking northeast to southeast at distances of 1.0 to 4.9 miles. Portions of turbines will be screened by existing vegetation and structures.



### TECHNICAL INFORMATION

Turbine Specifications		Photograph / Photosimulation Information	
<p>GAMESA G114</p>		Location	43.817295°, -75.817514°
		Viewing Direction	Northeast to Southeast
		Date and Time	02/17/17 at 2:20 pm
		Camera Focal Length	36 mm
		Camera Make/Model	Nikon D5500
		Photo Source	TJD&A
		Number Turbines Visible	4 Turbines, 4 Blades

**AVANGRID RENEWABLES**

**tjd&a**  
Scenic Resource Consultants  
Yarmouth, Maine

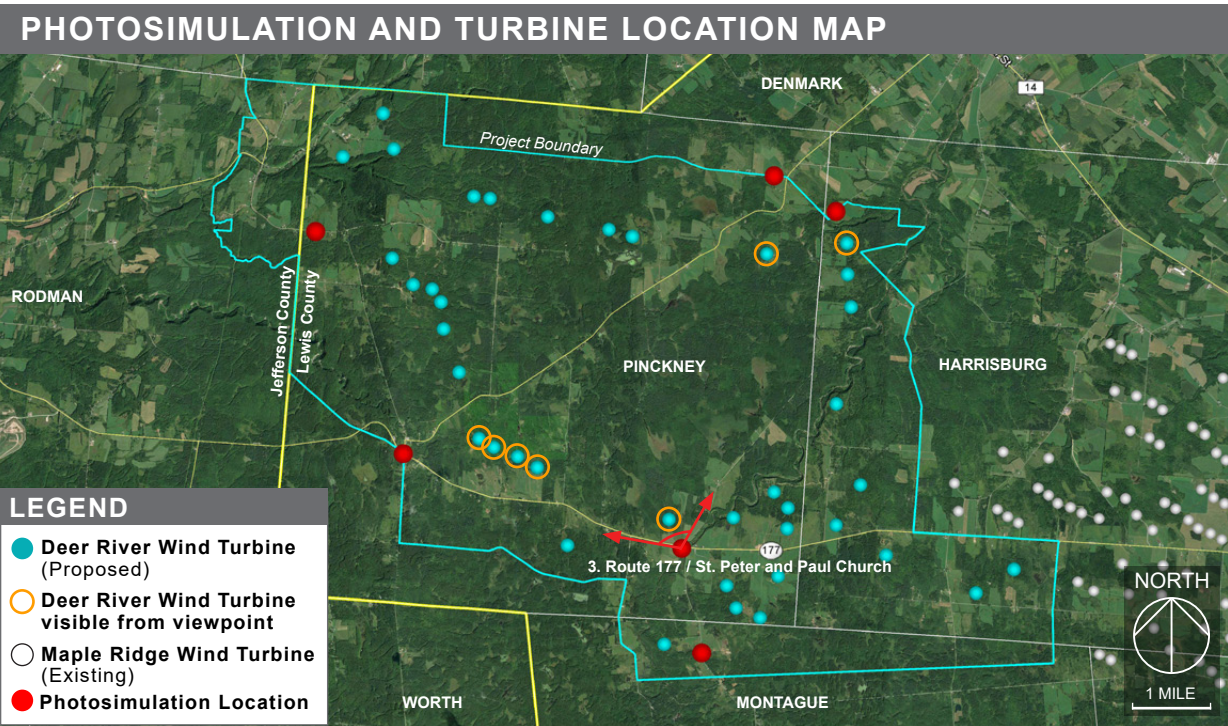
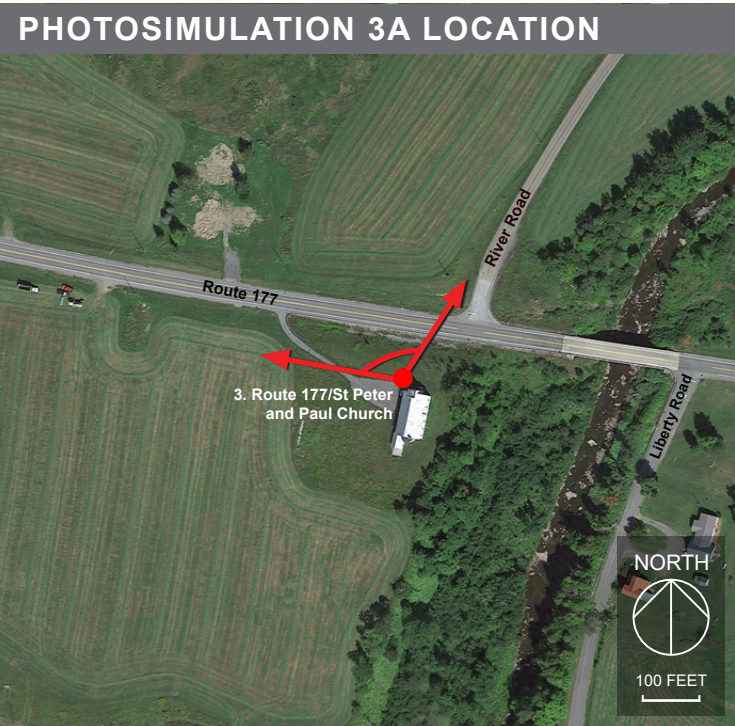
March 29, 2017

PAGE 4 OF 10





**Proposed Conditions:** Panoramic view from St. Peter and Paul Church off Route 177 in Pinckney. Approximately two turbines and blades of five turbines may be visible from this viewpoint looking west to northeast at distances of 0.4 to 4.3 miles.



### TECHNICAL INFORMATION

Turbine Specifications	Photograph / Photosimulation Information	
<p>GAMESA G114</p>	Location	43.800240°, -75.747845°
	Viewing Direction	West to Northeast
	Date and Time	02/17/17 at 1:20 pm
	Camera Focal Length	35 mm
	Camera Make/Model	Nikon D5500
	Photo Source	TJD&A
	Number Turbines Visible	2 Turbines, 5 Blades

**tjd&a**  
Scenic Resource Consultants  
Yarmouth, Maine

March 29, 2017

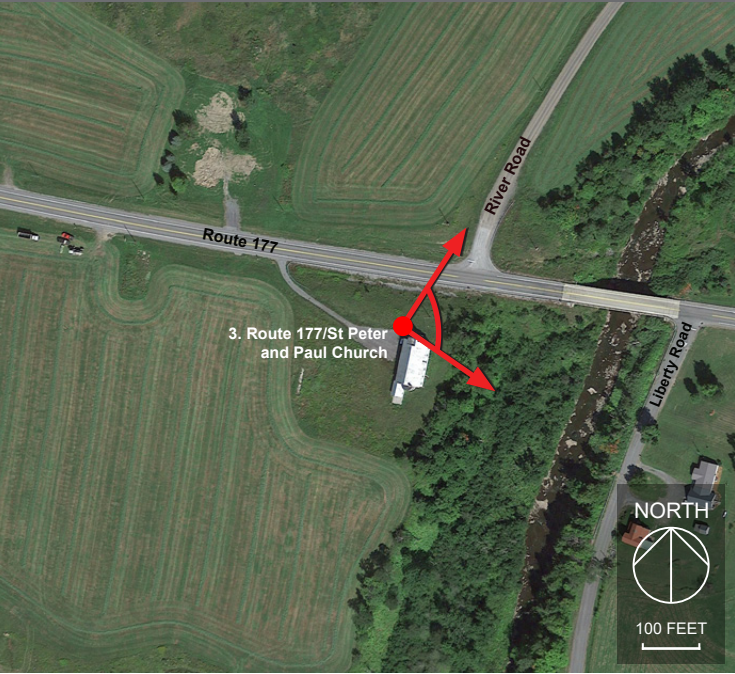
PAGE 5 OF 10



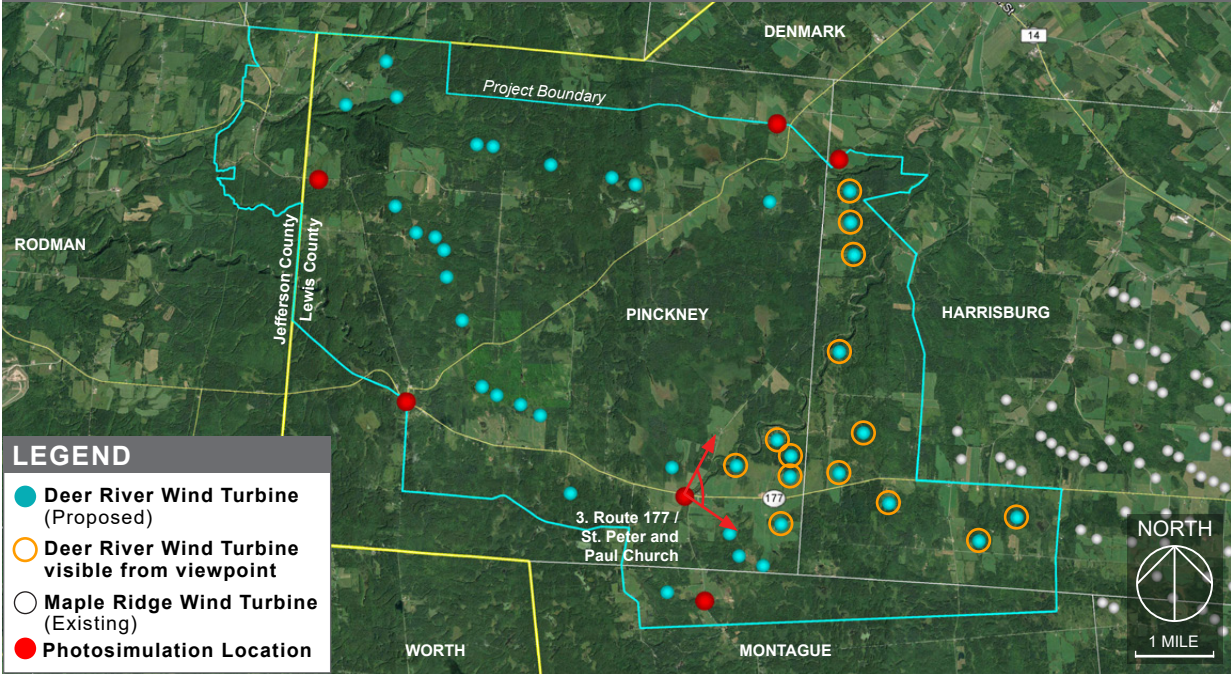


**Proposed Conditions:** Panoramic view from St. Peter and Paul Church near intersection of Route 177 and River Road in Pinckney. Approximately eleven turbines and blades of three turbines may be visible from this viewpoint looking northeast to southeast at distances of 0.8 to 4.3 miles. Existing Maple Ridge turbines are visible in the background to the east.

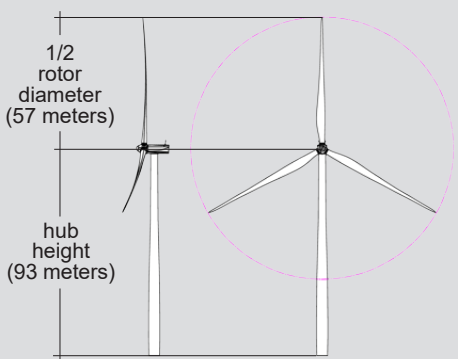


PHOTOSIMULATION 3B LOCATION



PHOTOSIMULATION AND TURBINE LOCATION MAP



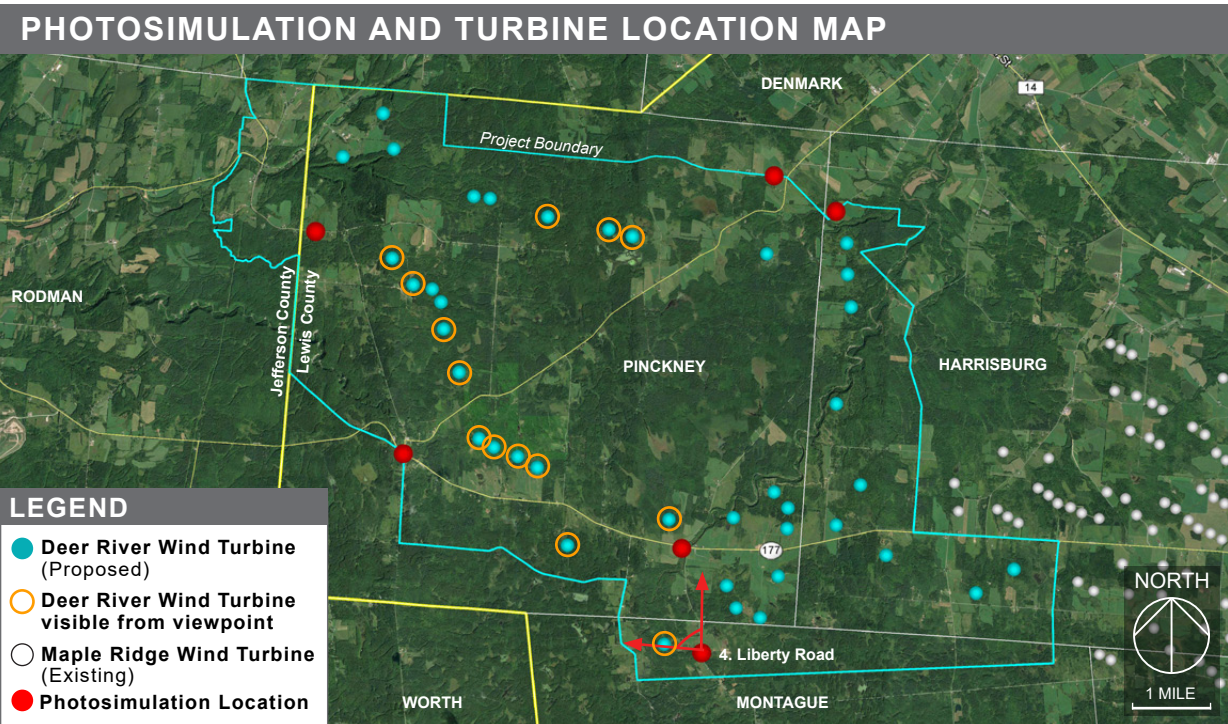
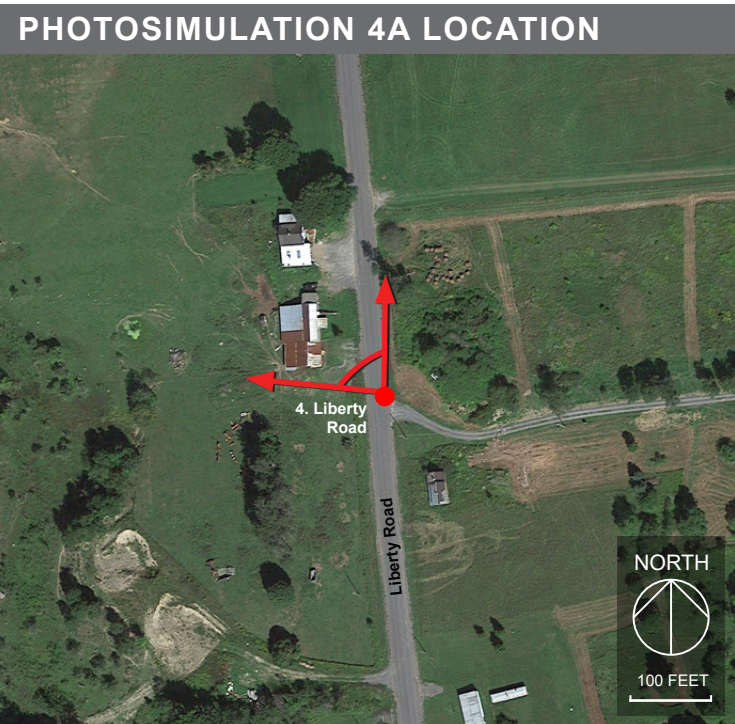
TECHNICAL INFORMATION

Turbine Specifications		Photograph / Photosimulation Information	
 <p>GAMESA G114</p>		Location	43.800240°, -75.747845°
		Viewing Direction	Northeast to Southeast
		Date and Time	02/17/17 at 1:20 pm
		Camera Focal Length	35 mm
		Camera Make/Model	Nikon D5500
		Photo Source	TJD&A
		Number Turbines Visible	11 Turbines, 3 Blades
		 <p>Yarmouth, Maine</p>	
March 29, 2017		PAGE 6 OF 10	





**Proposed Conditions:** Panoramic view looking west to north from Liberty Road in Montague. Approximately eleven turbines and blades of three turbines may be visible from this viewpoint looking west to north at distances of 0.5 to 6.3 miles.



### TECHNICAL INFORMATION

Turbine Specifications	Photograph / Photosimulation Information	
<p>GAMESA G114</p>	Location	43.781363°, -75.742858°
	Viewing Direction	West to north
	Date and Time	02/17/17 at 1:48 pm
	Camera Focal Length	36 mm
	Camera Make/Model	Nikon D5500
	Photo Source	TJD&A
Number Turbines Visible		11 Turbines, 3 Blades

AVANGRID RENEWABLES

tjd&a

Scenic Resource Consultants  
Yarmouth, Maine

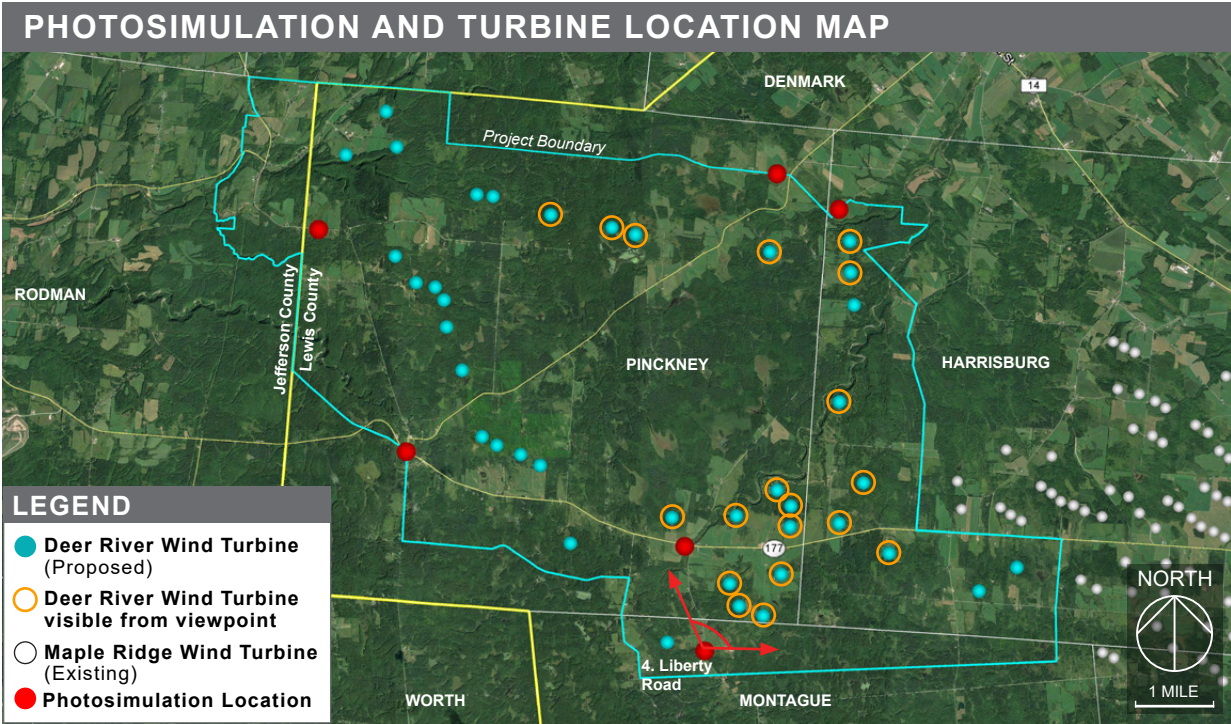
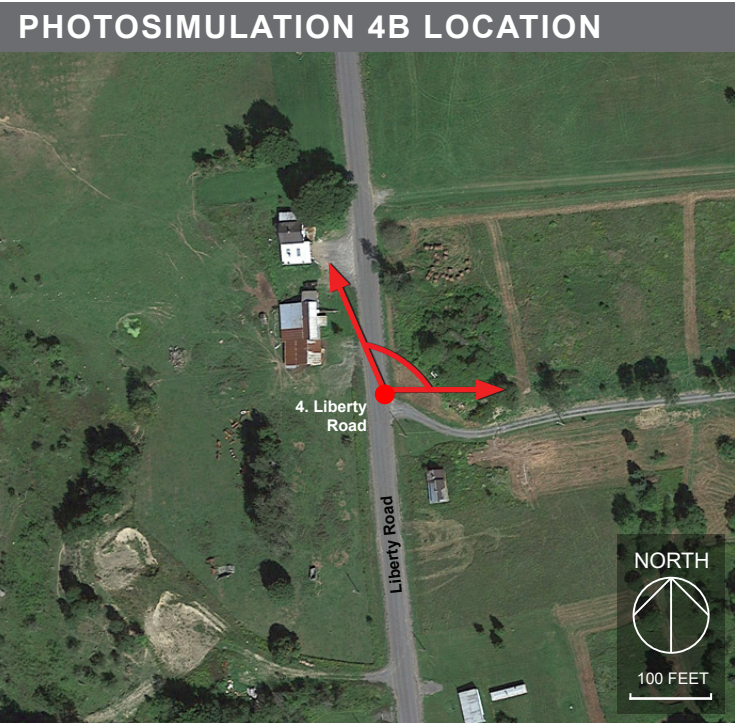
March 29, 2017

PAGE 7 OF 10





**Proposed Conditions:** Panoramic view from Liberty Road in Montague. Approximately fourteen turbines and blades of five turbines may be visible from this viewpoint looking northwest to east at distances of 0.7 to 5.8 miles.



TECHNICAL INFORMATION

Turbine Specifications	Photograph / Photosimulation Information	
<p>GAMESA G114</p>	Location	43.781363°, -75.742858°
	Viewing Direction	Northwest to East
	Date and Time	02/17/17 at 1:48 pm
	Camera Focal Length	36 mm
	Camera Make/Model	Nikon D5500
	Photo Source	TJD&A
	Number Turbines Visible	14 Turbines, 5 Blades

AVANGRID RENEWABLES

tjd&a

Scenic Resource Consultants  
Yarmouth, Maine

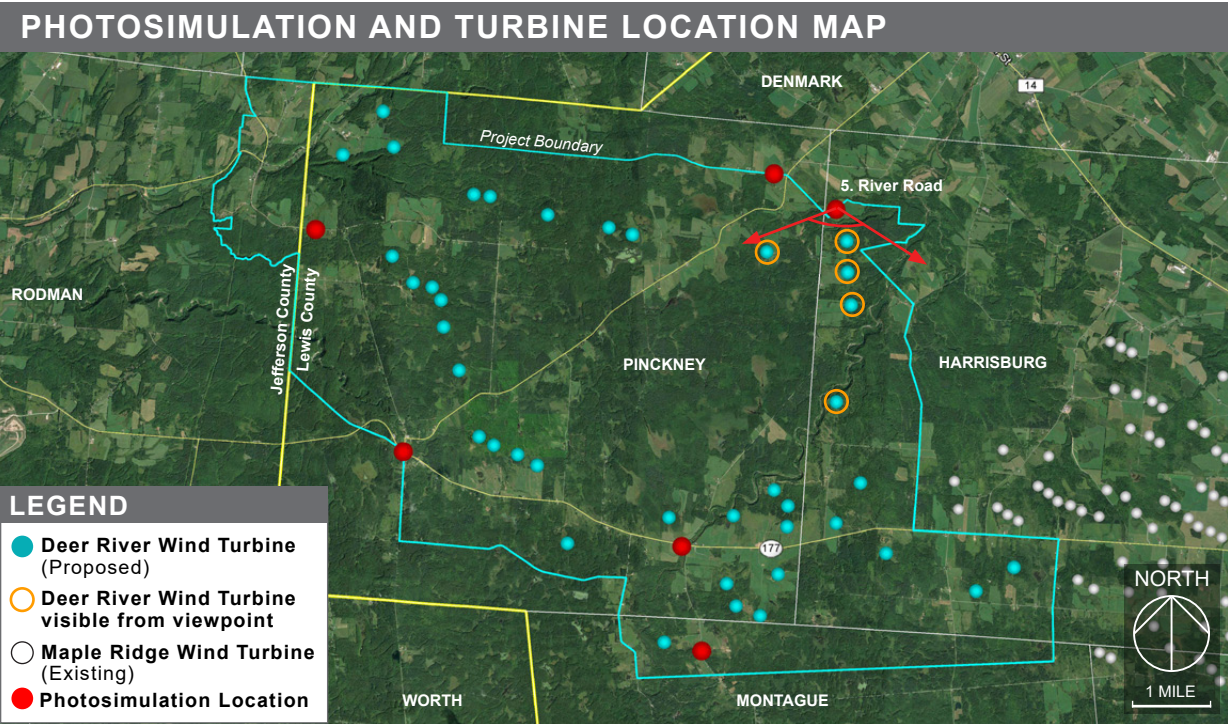
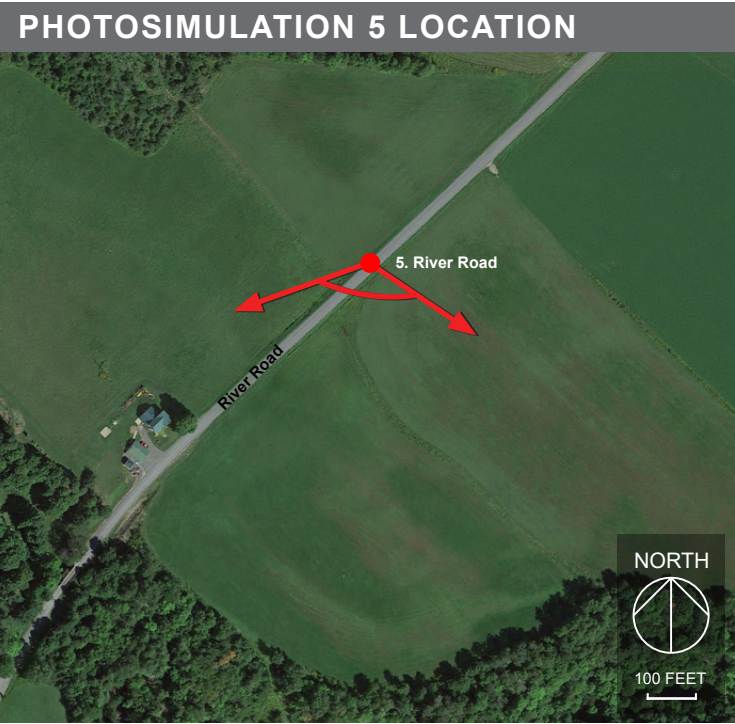
March 29, 2017

PAGE 8 OF 10





**Proposed Conditions:** Panoramic view from River Road in Harrisburg. Approximately four turbines and blades of one turbine may be visible from this viewpoint looking southeast to southwest at distances of 0.4 to 2.4 miles.



TECHNICAL INFORMATION

Turbine Specifications	Photograph / Photosimulation Information	
<p>1/2 rotor diameter (57 meters)</p> <p>hub height (93 meters)</p> <p>GAMESA G114</p>	Location	43.860985°, -75.709213°
	Viewing Direction	Southeast to Southwest
	Date and Time	02/17/17 at 4:13 pm
	Camera Focal Length	35 mm
	Camera Make/Model	Nikon D5500
	Photo Source	TJD&A
Number Turbines Visible	4 Turbines, 1 Blade	

AVANGRID RENEWABLES

tjd&a

Scenic Resource Consultants  
Yarmouth, Maine

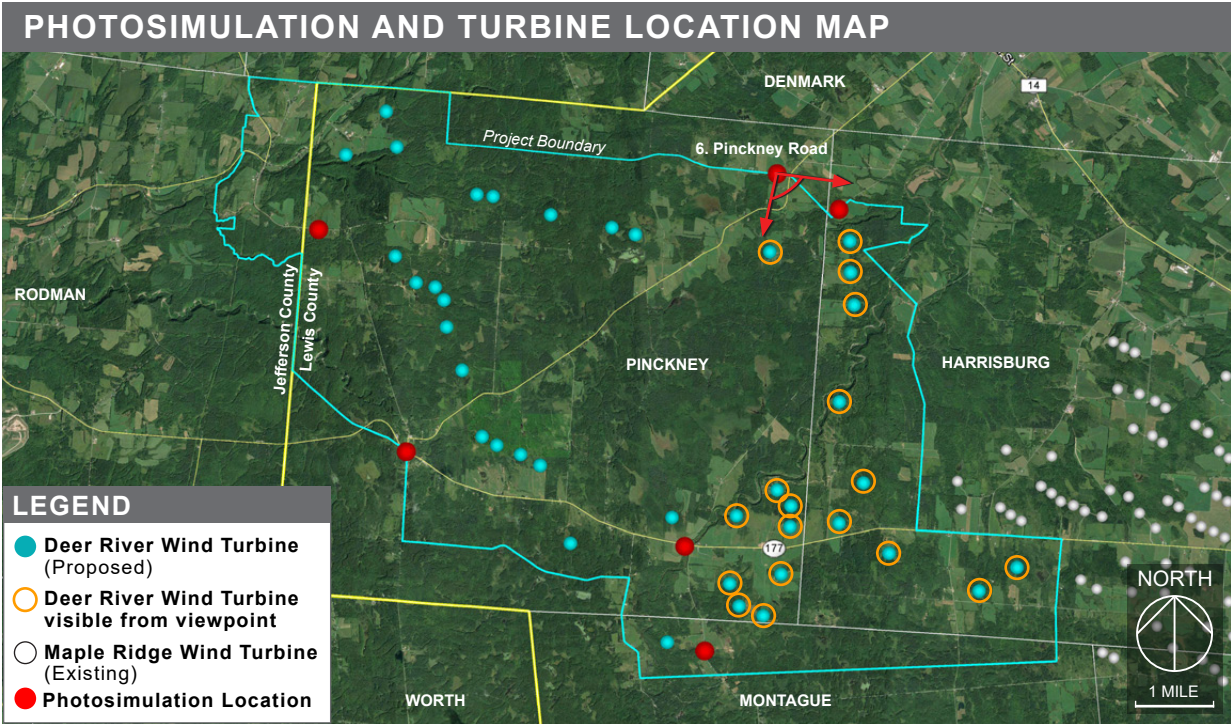
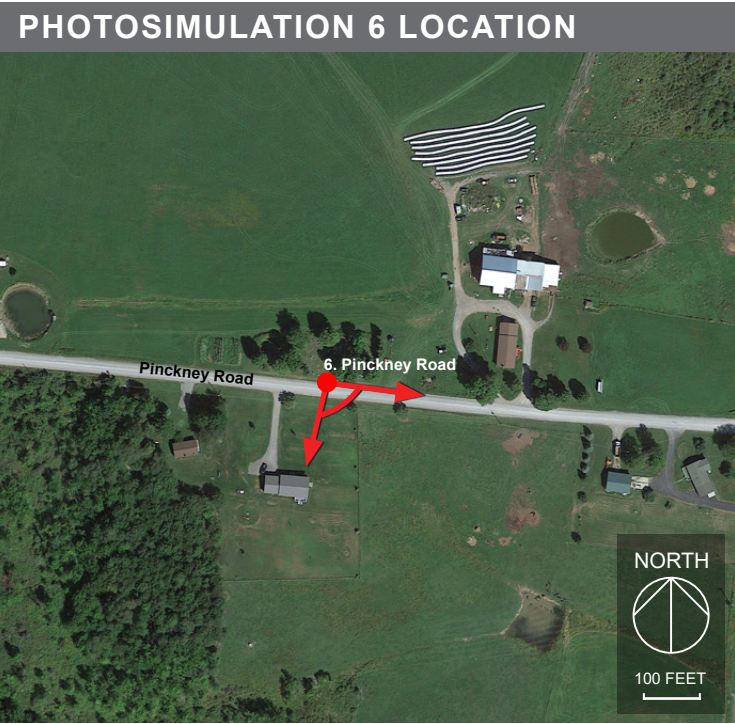
March 29, 2017

PAGE 9 OF 10





**Proposed Conditions:** Panoramic view from Pinckney Road in Pinckney. Approximately six turbines and the blades of nine turbines may be visible from this viewpoint looking east to south at distances of 1.0 to 5.8 miles. Existing Maple Ridge turbines are visible in the background.



TECHNICAL INFORMATION

Turbine Specifications	Photograph / Photosimulation Information	
<p>GAMESA G114</p>	Location	43.867431°, -75.724708°
	Viewing Direction	East to South
	Date and Time	02/17/17 at 3.25 pm
	Camera Focal Length	35 mm
	Camera Make/Model	Nikon D5500
	Photo Source	TJD&A
	Number Turbines Visible	6 Turbines, 9 Blades

AVANGRID RENEWABLES

tjd&a

Scenic Resource Consultants  
Yarmouth, Maine

March 29, 2017

PAGE 10 OF 10